

O.D.O.T. DISTRICT 2 SURVEY OFFICE (USE ONLY)

PERSONNEL

REFERENCE NO. 12

SHEET 8 OF 18

NOTES BALBAUGH

DATE 4/16/20

ROUTE SR 51

H.C. LEU

WEATHER CLOUDY

COUNTY OTTAWA

R.C. BALBAUGH

TEMP. 30°

TOWNSHIP CLAY

SECTION 12

DWG BY NIESE PID 94324

T 6 N R 13 E

TYPE MONUMENT P.K./WASHER

~~ON SURFACE~~ - BELOW 3"

OFFSET 12.1'  $\odot$  PAVEMENT 0.4' LT : ~~RT~~

TO RT EDGE PAVEMENT

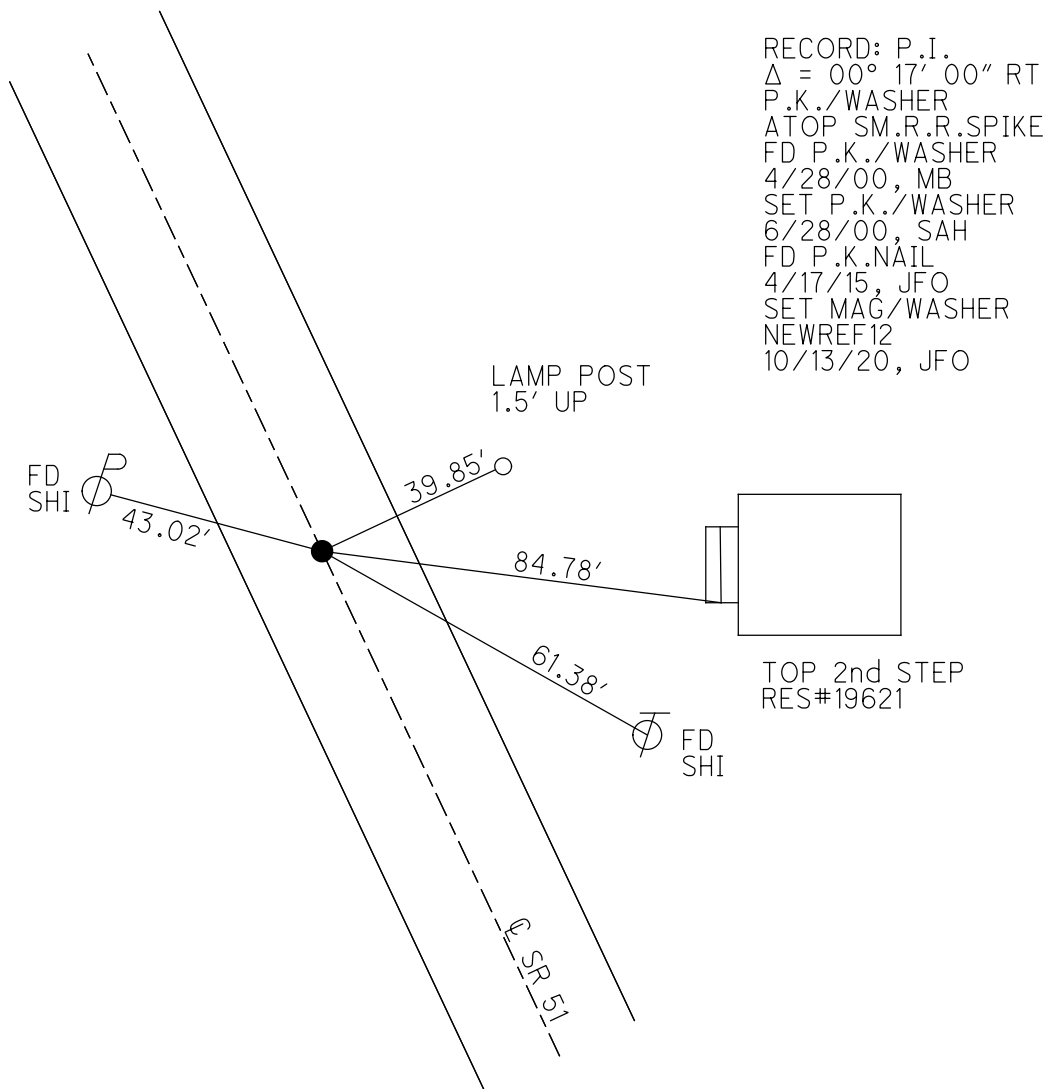
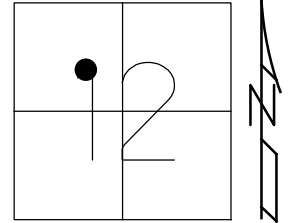
STATION: 161+58.26

HORZ.DATUM: NAD83 2011

GEOID: NAVD88 2012A

GRID: NORTHING: 667786.522

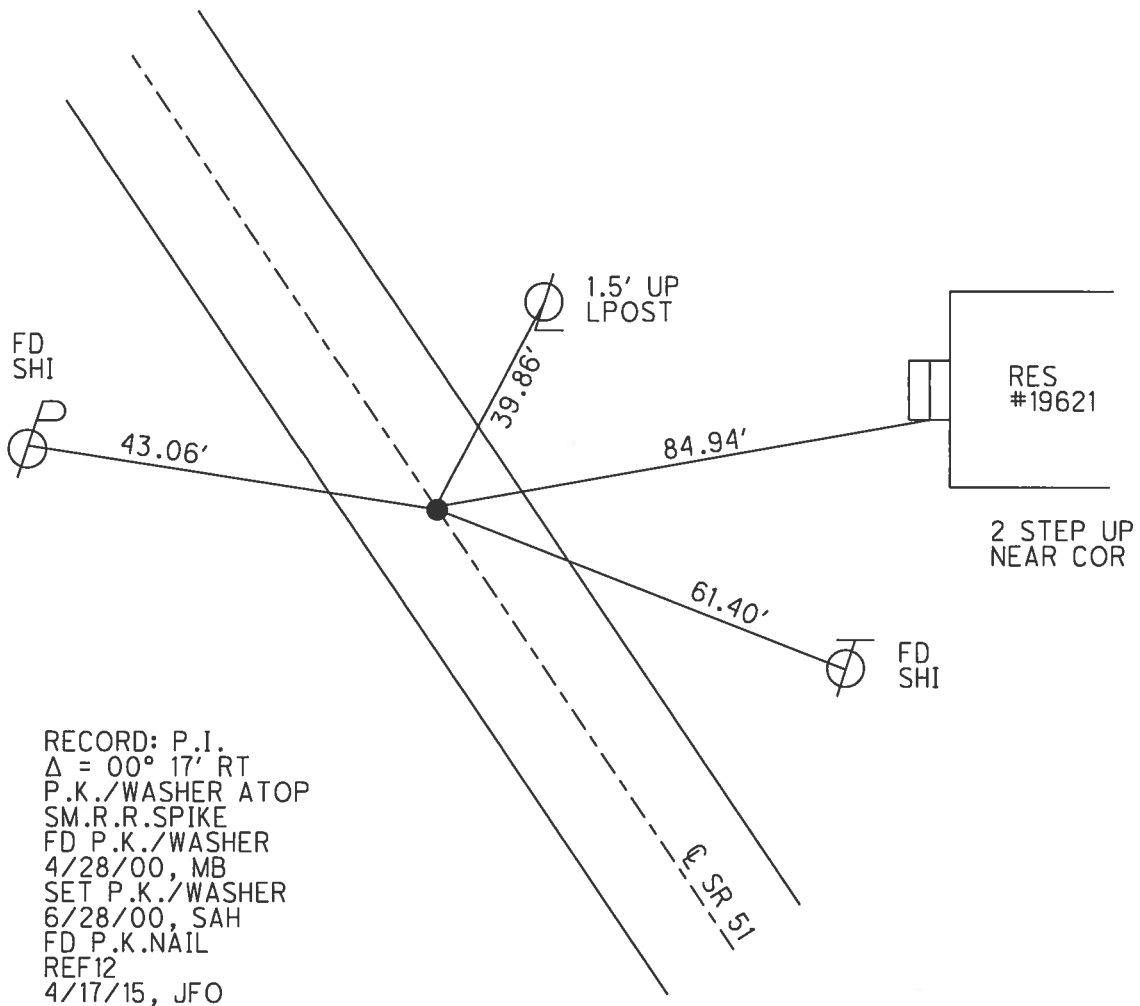
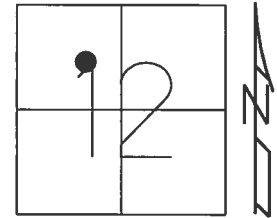
EASTING: 1745999.176



O.D.O.T. DISTRICT 2 SURVEY OFFICE (USE ONLY)

PERSONNEL	REFERENCE NO.	<u>12</u>	SHEET	<u>6</u>	OF	<u>16</u>
NOTES	<u>BARNHISEL</u>	DATE	<u>4/28/00</u>	ROUTE	<u>SR 51</u>	
H.C.	<u>CANTERBURY</u>	WEATHER	<u>SUNNY</u>	COUNTY	<u>OTTAWA</u>	
R.C.	<u>MOSER</u>	TEMP.	<u>55°</u>	TOWNSHIP	<u>CLAY</u>	
	<u>HOMAN</u>			SECTION	<u>12</u>	
				T	<u>6</u>	R
				N		E

TYPE MONUMENT P.K./WASHER  
 ON SURFACE - ~~BELOW~~ ON  
 LEFT - ☉ PAV'T - RIGHT ON  
12.1' TO RT EDGE PAVEMENT  
 S.L.M. 161+58.26  
 Grid: Northing: 667786.127 Easting: 1745999.114



RECORD: P.I.  
 $\Delta = 00^\circ 17' \text{ RT}$   
 P.K./WASHER ATOP  
 SM.R.R.SPIKE  
 FD P.K./WASHER  
 4/28/00, MB  
 SET P.K./WASHER  
 6/28/00, SAH  
 FD P.K.NAIL  
 REF12  
 4/17/15, JFO

# O.D.O.T. DISTRICT 2 SURVEY OFFICE

PERSONNEL

REFERENCE NO. 12

SHEET 6 OF 17

NOTES Barnhisel

H.C. Canterbury

R.C. Moser

Drawn By - Homan

DATE 4-28-00

WEATHER Sunny

TEMP. 55°

ROUTE 51

COUNTY OTTAWA

TOWNSHIP CLAY

SECTION 12

T. 6 N. R. 13 E.

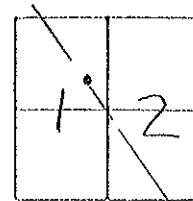
TYPE MONUMENT P.K. & WASHER

ON SURFACE - BELOW Yes

LEFT - C. PAV'T. - RIGHT Yes

12.1 TO RT. EDGE PAVEMENT

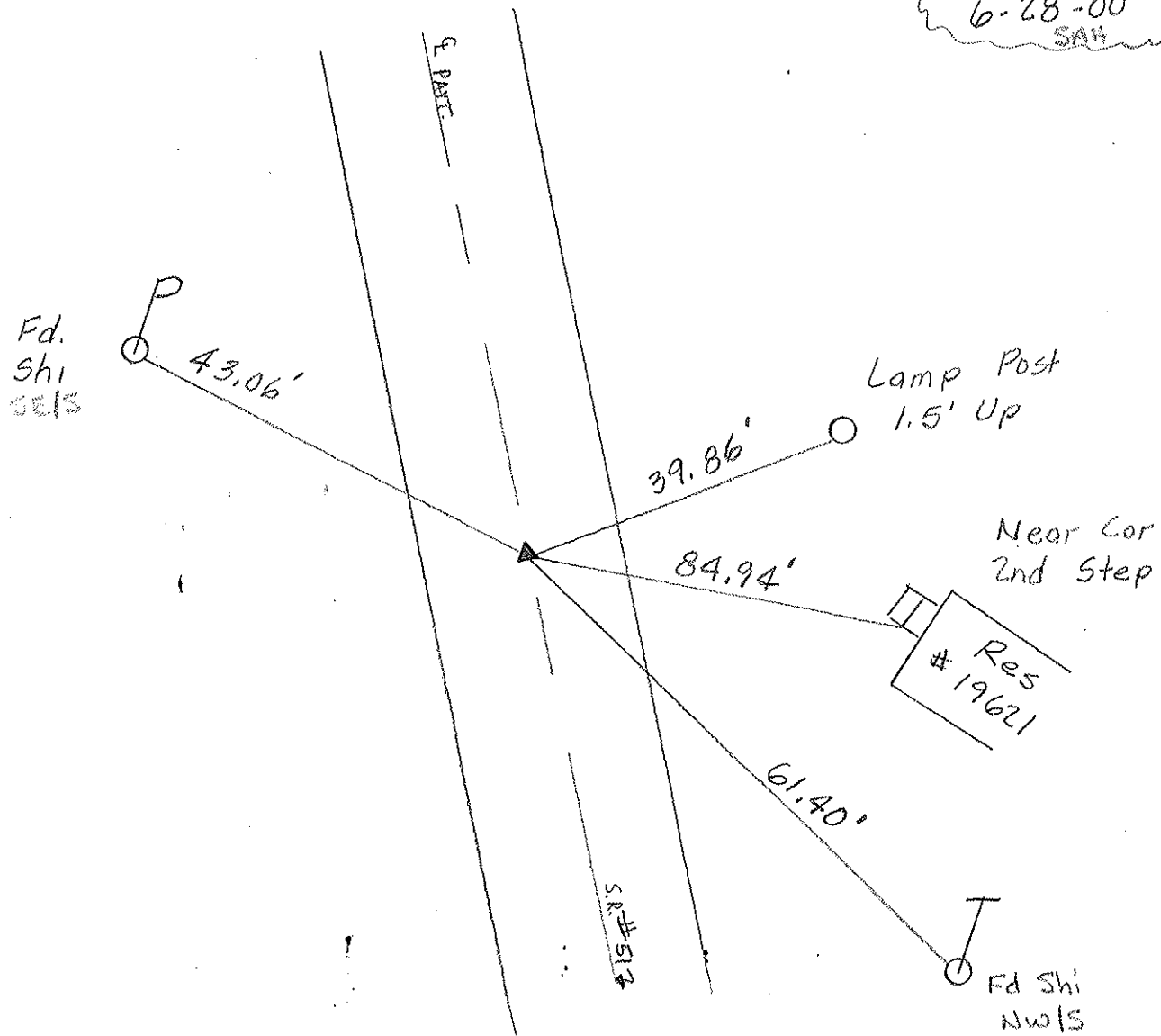
S.L.M. 162+20



RECORD: P.I.  $\Delta = 00^{\circ} 17' 00''$  RT.

P.K. ATOP SM. RR. SPK. BELOW SURFACE

Set PK/WASHER  
6-28-00  
SAH



# O.D.O.T. DISTRICT 2 SURVEY OFFICE

PERSONNEL

REFERENCE NO. 12

SHEET 11 OF     

NOTES Cronin

H.C. Ripple

R.C. Barbour

Geyman

DATE 9/24/87

WEATHER sunny

TEMP. 62°

ROUTE 51

COUNTY Ottawa

TOWNSHIP Clay

SECTION 12

T 6 N R 13 E

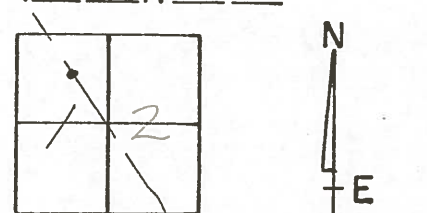
TYPE MONUMENT P.K. washer

ON SURFACE - BELOW onsurface

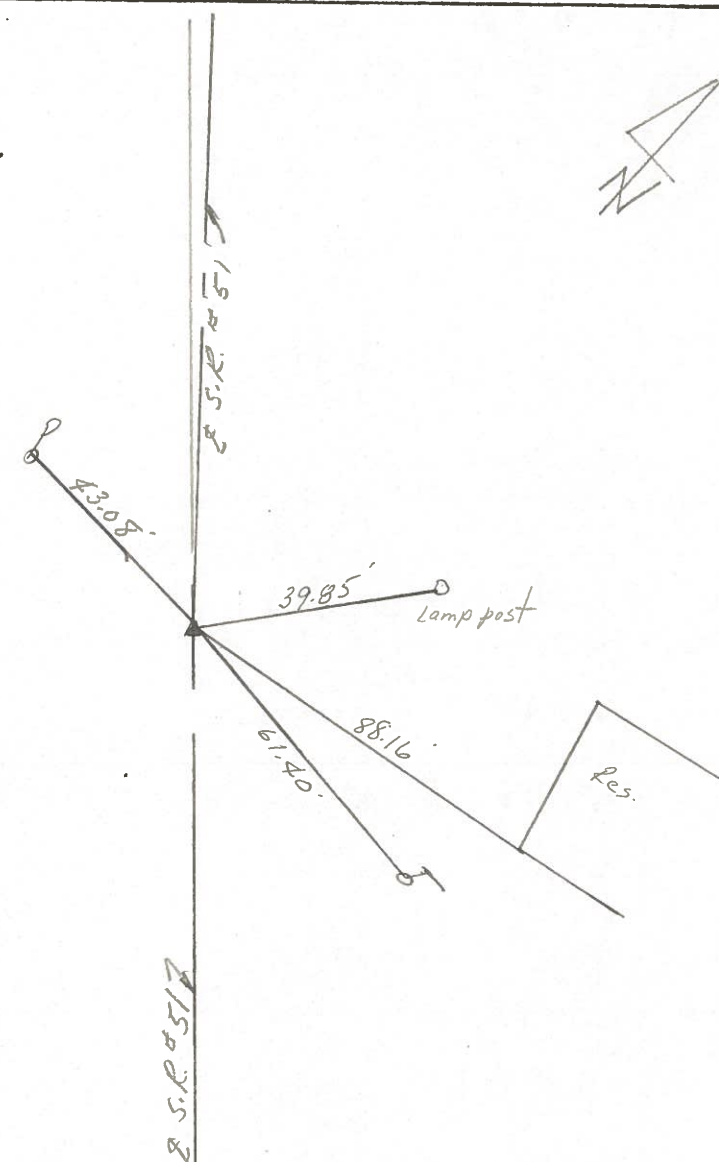
LEFT - € PAV'T. - RIGHT € Pavmt.

     TO      EDGE PAVEMENT

S.L.M. 161+69.85



P.I.  
 $\Delta = 00^{\circ} 17' 00''$  rt.  
R.K. at top small R.R. spike  
below surface



PERSONNEL TITLE PERSONNEL TITLE

COUNTY Ottawa DATE 1-11-72

S. R. 51 WEATHER Fair

SEC. 1 & 12 TEMP. 35°

DESCRIPTION Clay Twp. LEFT CENTER LINE RIGHT JOB NO.

P.I.  
182+62.06  
small R.R. spk.  
 $\Delta = 0^\circ 29' \text{ Rt.}$

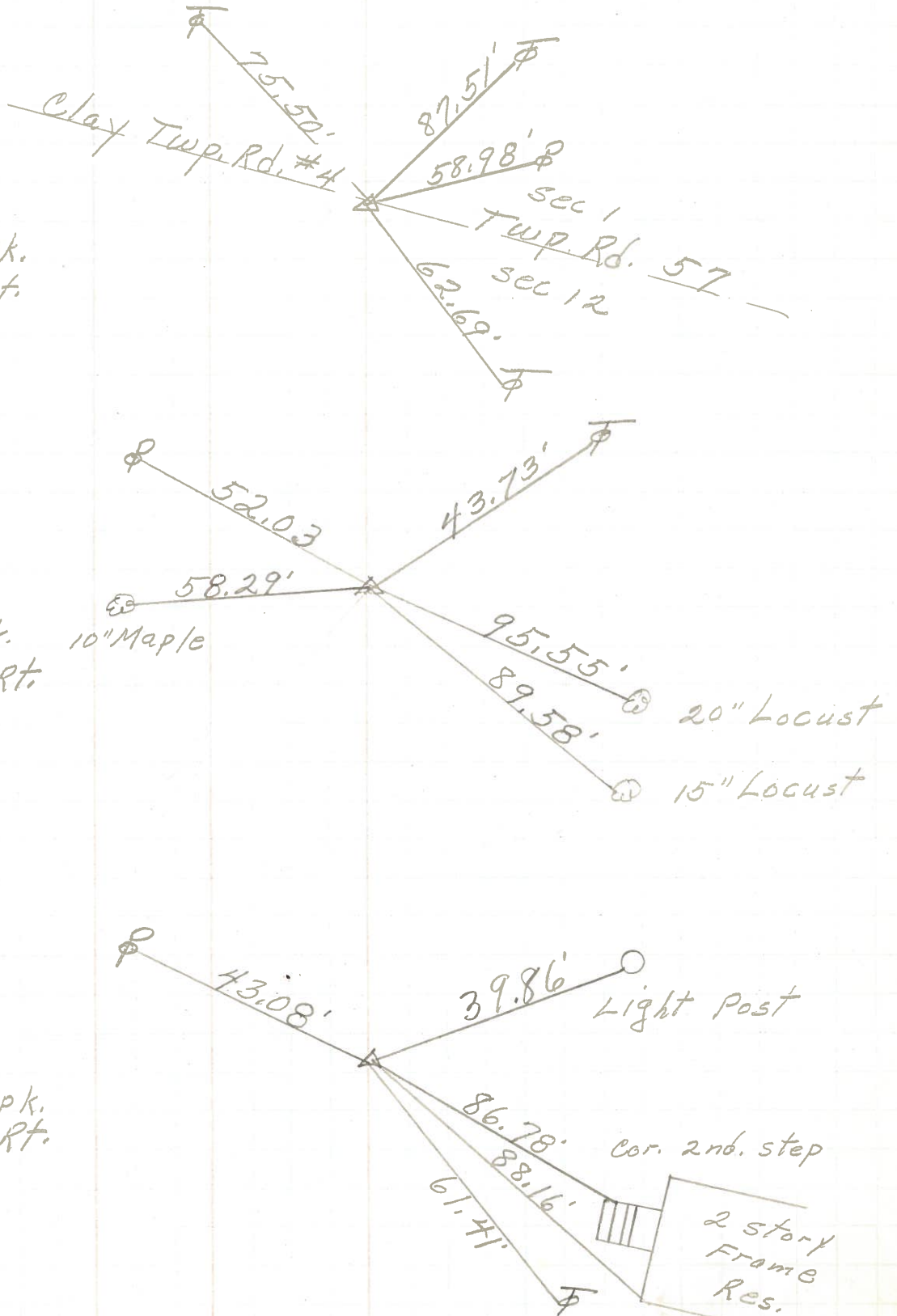
14

P.I.  
171+57.77  
small R.R. spk.  
 $\Delta = 0^\circ 22' \text{ Rt.}$

13

P.I.  
161+69.85  
small R.R. spk.  
 $\Delta = 0^\circ 17' \text{ Rt.}$

12.



PERSONNEL	TITLE	PERSONNEL	TITLE
Schneider		Potts	
Mosser			
Barbour			
Redding			

COUNTY Ottawa DATE 7-10-68  
 S. R. 51 WEATHER Fair  
 SEC. Wood Co. Line - East TEMP. 70°

DESCRIPTION Ties for Control Points JOB NO. \_\_\_\_\_

