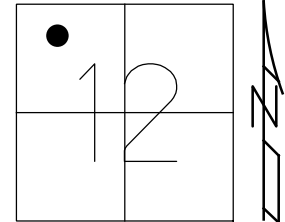


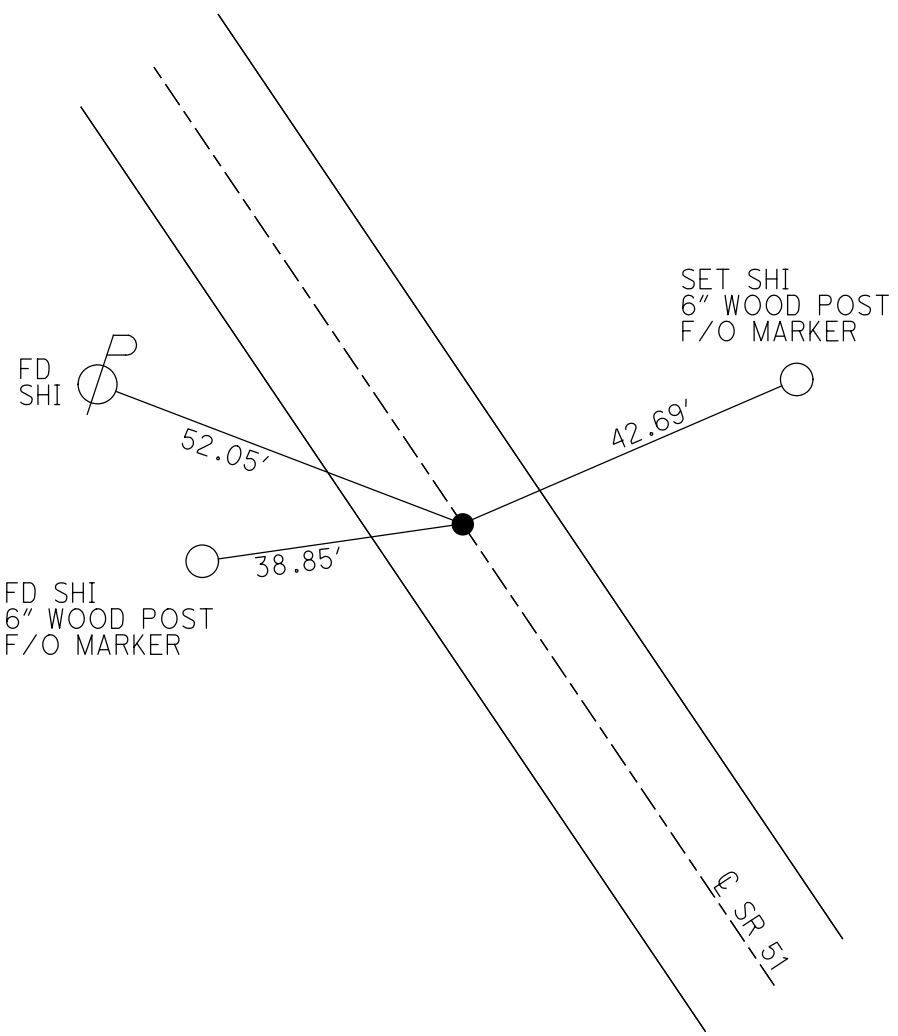
O.D.O.T. DISTRICT 2 SURVEY OFFICE (USE ONLY)

PERSONNEL \_\_\_\_\_ REFERENCE NO. 13 SHEET 9 OF 18  
 NOTES BALBAUGH DATE 4/16/20 ROUTE SR 51  
 H.C. LEU WEATHER SUNNY COUNTY OTTAWA  
 R.C. BALBAUGH TEMP. 30° TOWNSHIP CLAY  
 DWG BY NIESE PID 94324 SECTION 12  
 T 6 N R 13 E

TYPE MONUMENT P.K.NAIL  
 ON SURFACE - ~~BELOW~~ ON  
 OFFSET ☐ PAVEMENT ON LT : RT  
12.2' TO RT EDGE PAVEMENT  
 STATION: 171+46.04



HORIZ.DATUM: NAD83 2011 GEOID: NAVD88 2012A  
 GRID: NORTHING: 668599.601 EASTING: 1745438.905

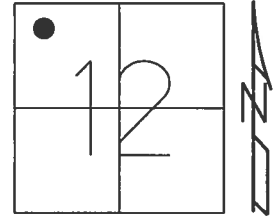


RECORD: P.I.  
 $\Delta = 00^\circ 22' 00''$  RT  
 P.K./WASHER  
 ATOP SM.R.R.SPIKE  
 FD P.K./WASHER  
 4/28/00, MB  
 SET P.K./WASHER  
 6/28/00, SAH  
 FD P.K./WASHER  
 4/17/15, JFO  
 SET MAG/WASHER  
 NEWREF13  
 10/13/20, JFO

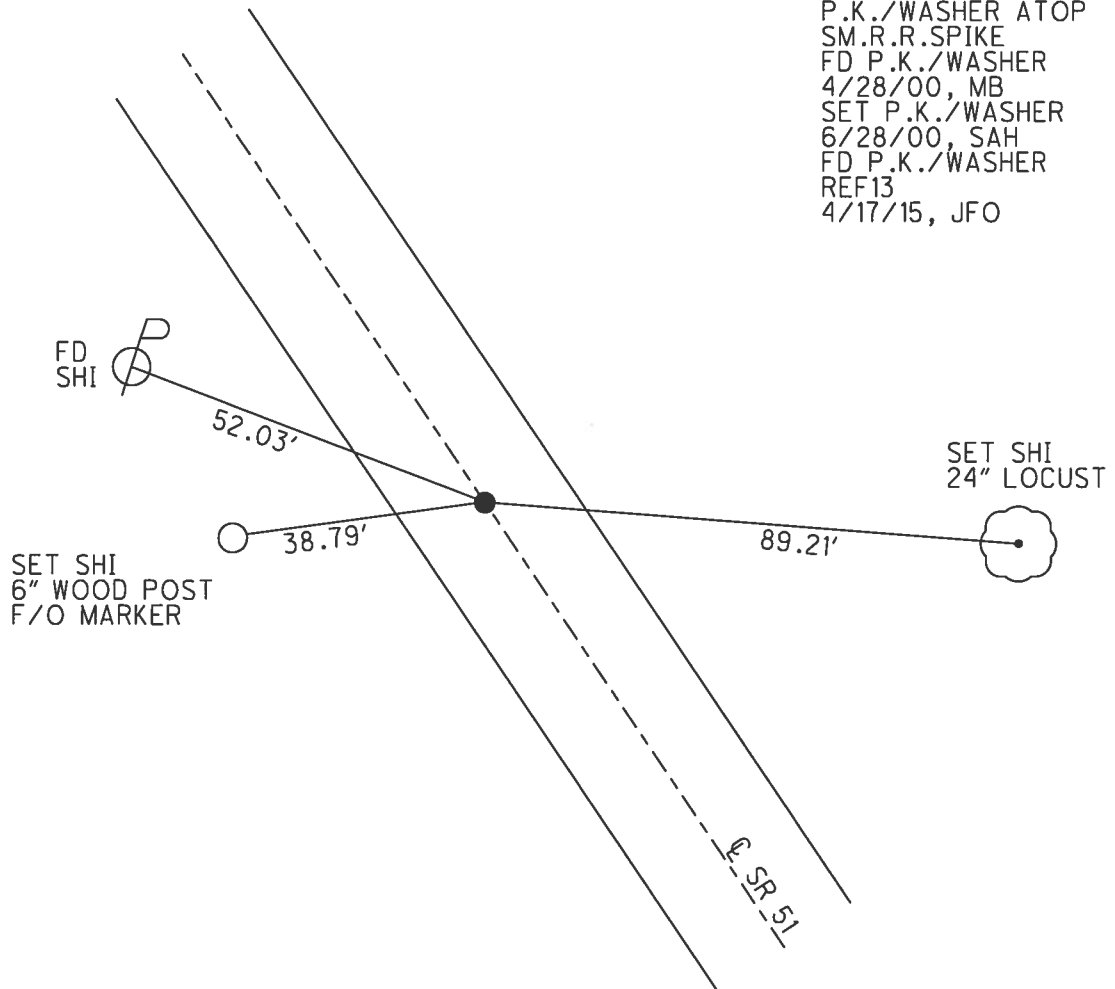
O.D.O.T. DISTRICT 2 SURVEY OFFICE (USE ONLY)

PERSONNEL \_\_\_\_\_ REFERENCE NO. 13 SHEET 7 OF 16  
 NOTES BARNHEISEL DATE 4/28/00 ROUTE SR 51  
 H.C. CANTERBURY WEATHER SUNNY COUNTY OTTAWA  
 R.C. MOSER TEMP. 55° TOWNSHIP CLAY  
 \_\_\_\_\_ HOMAN \_\_\_\_\_ SECTION 12  
 \_\_\_\_\_ T 6 N R 13 E

TYPE MONUMENT P.K./WASHER  
 ON SURFACE - ~~BELOW~~ ON \_\_\_\_\_  
 LEFT - ☉ PAV'T - RIGHT ON \_\_\_\_\_  
12.2' TO RT EDGE PAVEMENT  
 S.L.M. 171+46.04  
 Grid: Northing: 668599.631 Easting: 1745438.838



RECORD: P.I.  
 $\Delta = 00^{\circ}22' RT$   
 P.K./WASHER ATOP  
 SM.R.R.SPIKE  
 FD P.K./WASHER  
 4/28/00, MB  
 SET P.K./WASHER  
 6/28/00, SAH  
 FD P.K./WASHER  
 REF13  
 4/17/15, JFO



O.D.O.T. DISTRICT 2 SURVEY OFFICE

PERSONNEL

REFERENCE NO. 13

SHEET 7 OF 17

NOTES Barnhisel

H.G. Canterbury

R.G. Moser

DATE 4-28-00

WEATHER Sunny

TEMP. 55°

ROUTE 51

COUNTY OTTAWA

TOWNSHIP CLAY

SECTION 12

T. 6 N. R. 13 E.

DRAWN BY - Homan

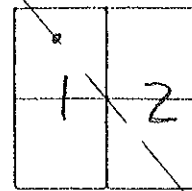
TYPE MONUMENT P.K. & WASHER

ON SURFACE - BELOW Yes

LEFT - C PAV'T. - RIGHT Yes

12.2 TO Rt EDGE PAVEMENT

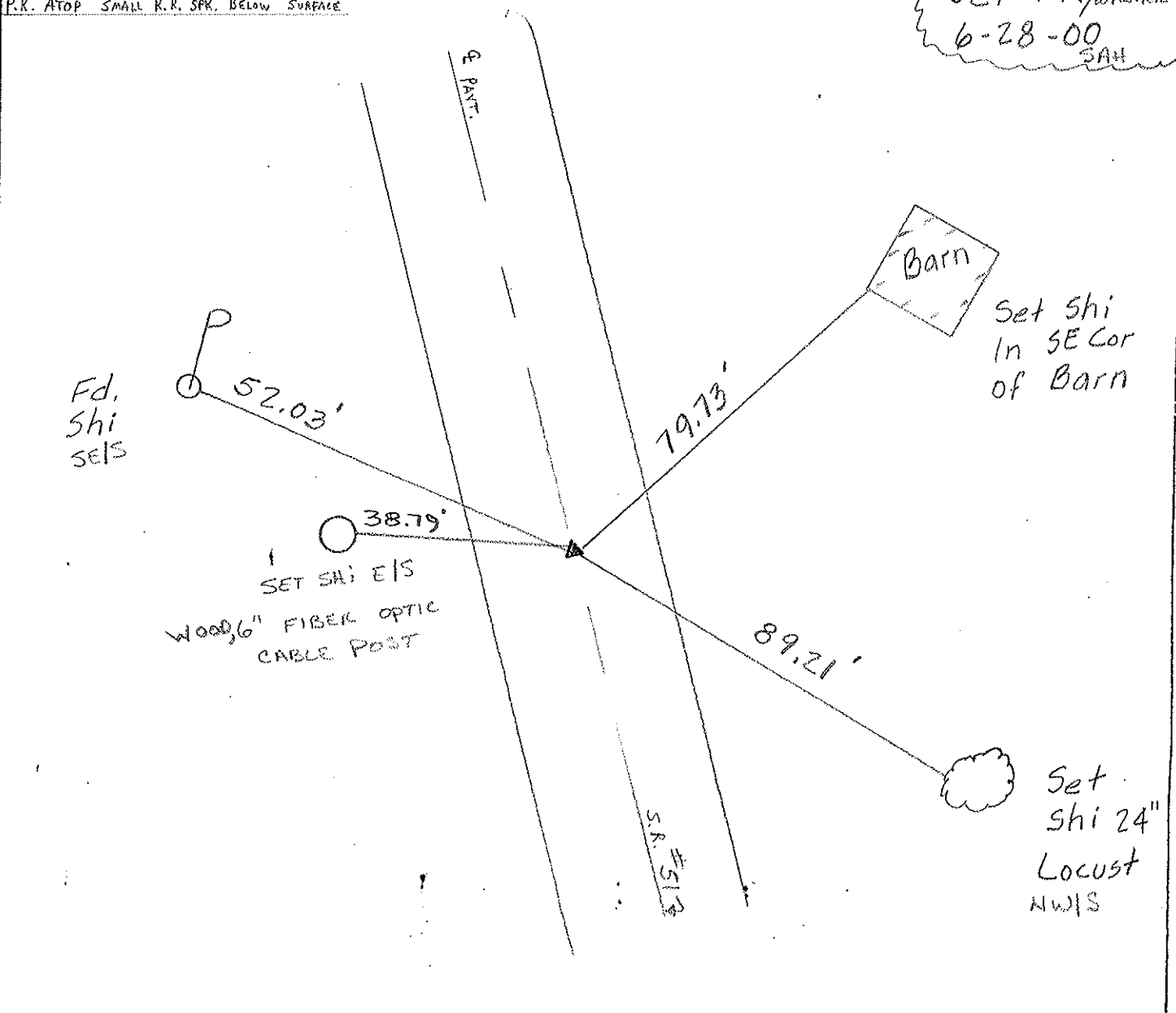
S.L.M. 172 + 12



RECORD: P.I.  $\Delta = 00^{\circ} 22' 00''$  RT.

P.K. ATOP SMALL R.R. SPK. BELOW SURFACE

Set PK/washer  
6-28-00  
SAH



O.D.O.T. DISTRICT 2 SURVEY OFFICE

PERSONNEL

REFERENCE NO. 13

SHEET 12 OF     

NOTES Cronin

H.C. Ripple

R.C. Barbour

Ceyman

DATE 9/24/87

WEATHER sunny

TEMP. 66°

ROUTE 51

COUNTY Ottawa

TOWNSHIP Clay

SECTION 12

T 6 N R 13 E

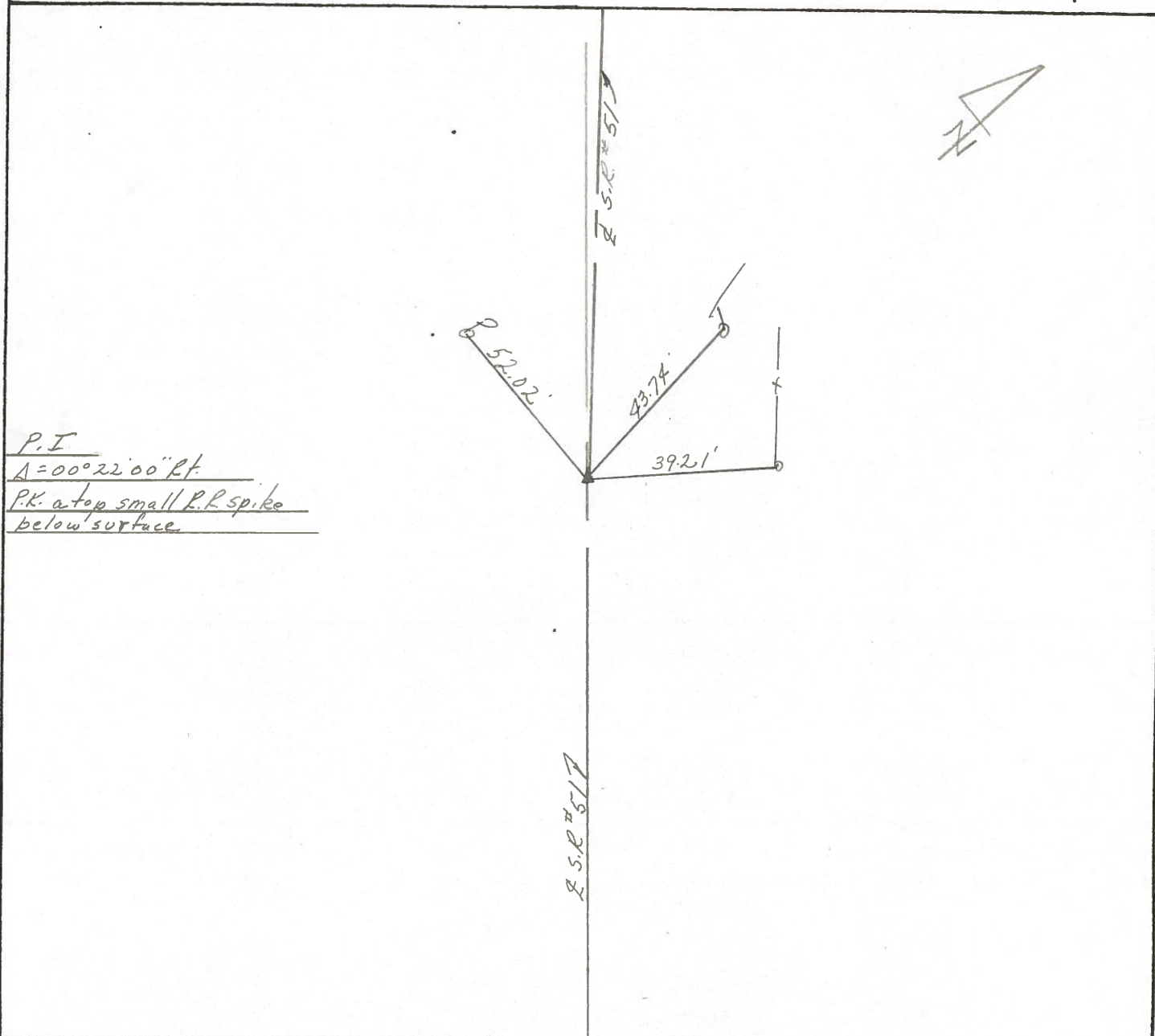
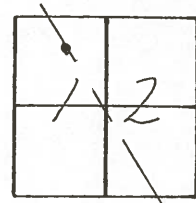
TYPE MONUMENT P.K. & washer

ON SURFACE - BELOW on surface

LEFT - € PAV'T. - RIGHT L. Pav't.

TO      EDGE PAVEMENT

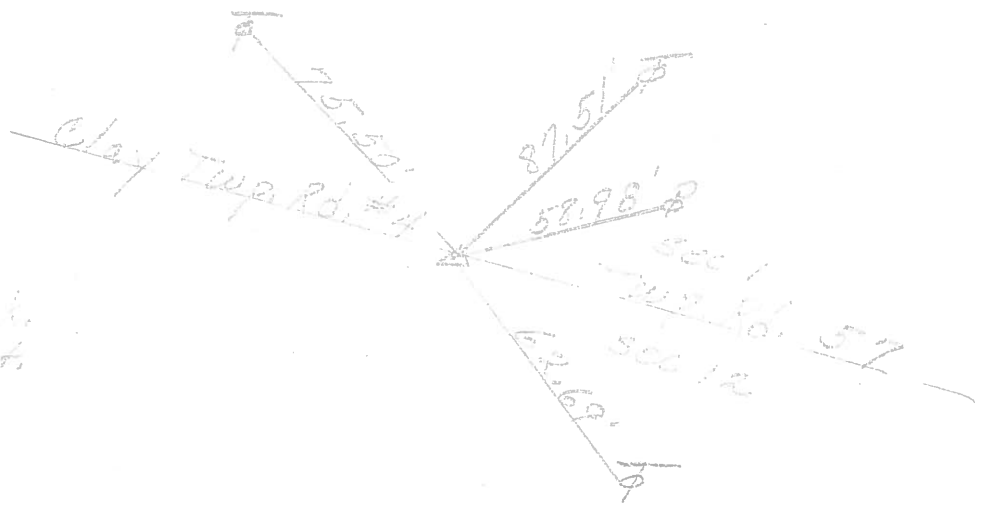
S.L.M. 171+57.77



PERSONNEL	TITLE	PERSONNEL	TITLE	COUNTY	DATE		
				Ottawa	1-11-72		
				S. R. 51	WEATHER Fair		
				SEC. 14.12	TEMP. 35°		
DESCRIPTION	Clay Twp.			LEFT	CENTER LINE	RIGHT	JOB NO.

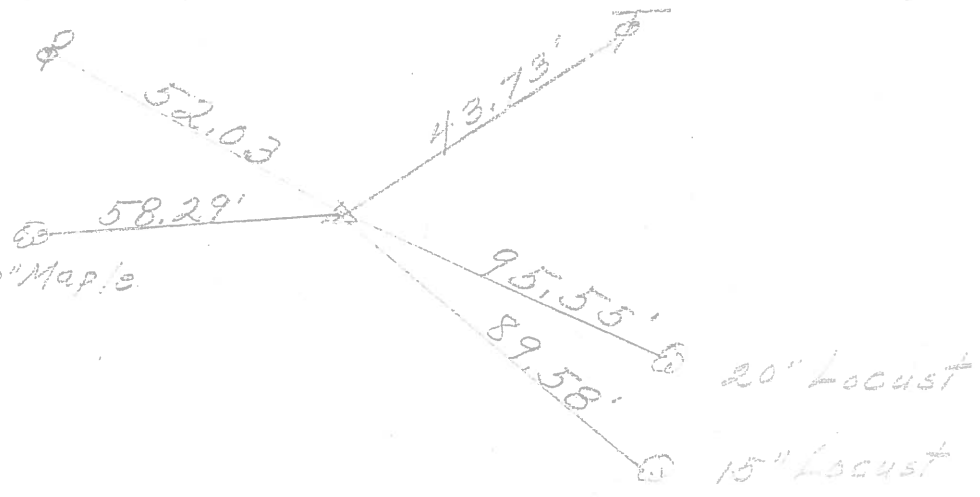
P.I.  
 182+62.06  
 small R.R. spk.  
 $\Delta = 0^\circ 29' \text{ Rt.}$

14



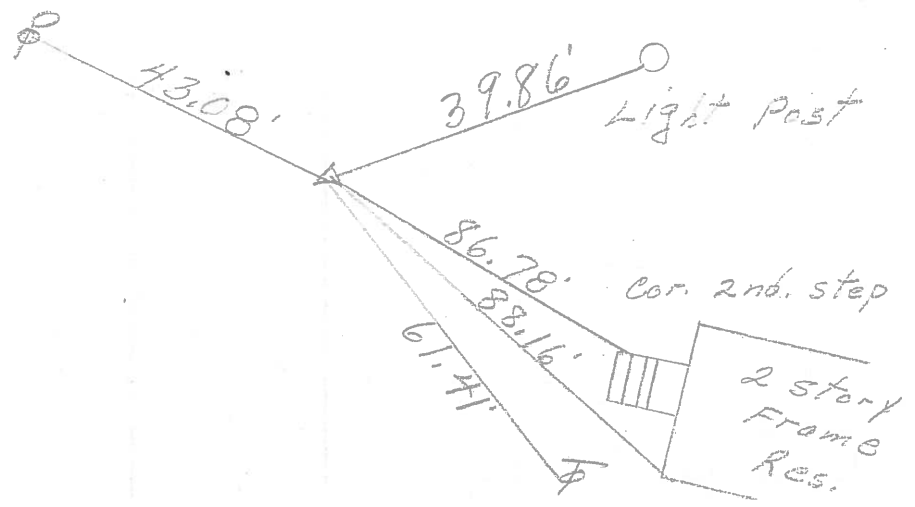
P.I.  
 171+57.77  
 small R.R. spk. 10" Maple  
 $\Delta = 0^\circ 22' \text{ Rt.}$

13



P.I.  
 161+69.85  
 small R.R. spk.  
 $\Delta = 0^\circ 17' \text{ Rt.}$

12



PERSONNEL	TITLE	PERSONNEL	TITLE	COUNTY	DATE
Schneider		Potts		Ottawa	8-10-68
Mosser				S. R. 51	WEATHER Cloudy
Barbour				SEC. Wood Co. Line - East	TEMP. 60°
Redding					

DESCRIPTION Ties for Control Points JOB NO. \_\_\_\_\_

