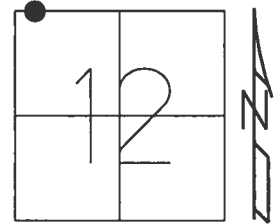


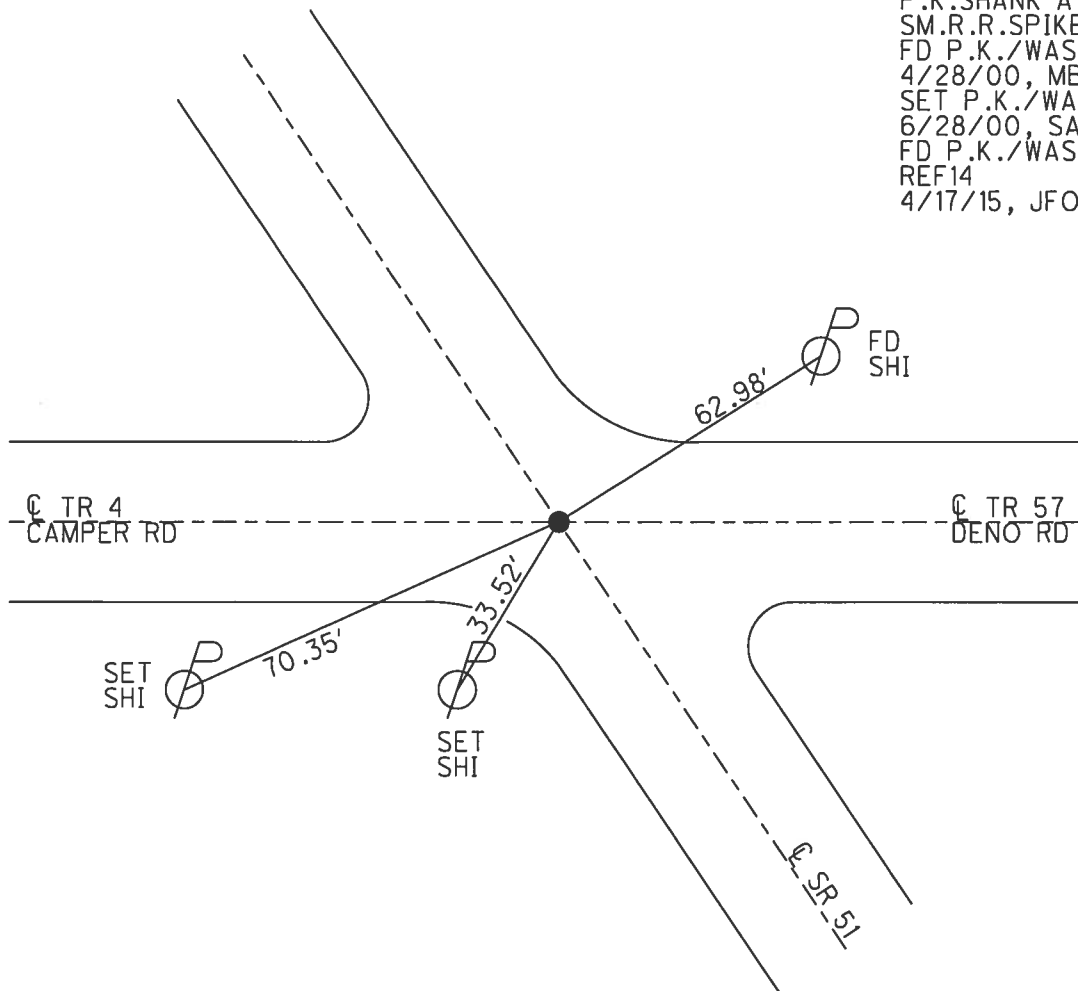
O.D.O.T. DISTRICT 2 SURVEY OFFICE (USE ONLY)

PERSONNEL _____ REFERENCE NO. 14 SHEET 8 OF 16
 NOTES BARNHESEL DATE 4/28/00 ROUTE SR 51
 H.C. CANTERBURY WEATHER SUNNY COUNTY OTTAWA
 R.C. MOSER TEMP. 55° TOWNSHIP CLAY
HOMAN SECTION 12
 T 6 N R 13 E

TYPE MONUMENT P.K./WASHER
 ON SURFACE - ~~BELOW~~ ON
 LEFT - ☉ PAV'T - RIGHT ON
- TO - EDGE PAVEMENT
 S.L.M. 182+50.46
 Grid: Northing: 669513.280 Easting: 1744818.359



RECORD: P.I.
 $\Delta = 00^{\circ}29' RT$
 P.K. SHANK ATOP
 SM.R.R. SPIKE
 FD P.K./WASHER
 4/28/00, MB
 SET P.K./WASHER
 6/28/00, SAH
 FD P.K./WASHER
 REF14
 4/17/15, JFO



O.D.O.T. DISTRICT 2 SURVEY OFFICE

PERSONNEL

REFERENCE NO. 14

SHEET 8 OF 17

NOTES Barnhisel

H.G. Canterbury

R.G. Moser

DATE 4-28-00

WEATHER Sunny

TEMP. 55°

ROUTE 51

COUNTY OTTAWA

TOWNSHIP CLAY

SECTION 12

T. 6 N. R. 13 E

DRAWN BY - HOMAN

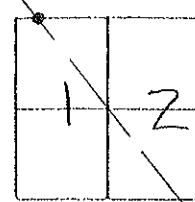
TYPE MONUMENT P.K. & WASHER

ON SURFACE - ~~BELOW~~ Yes

LEFT - ~~C~~ PAV'T. - ~~RIGHT~~ Yes

TO EDGE PAVEMENT

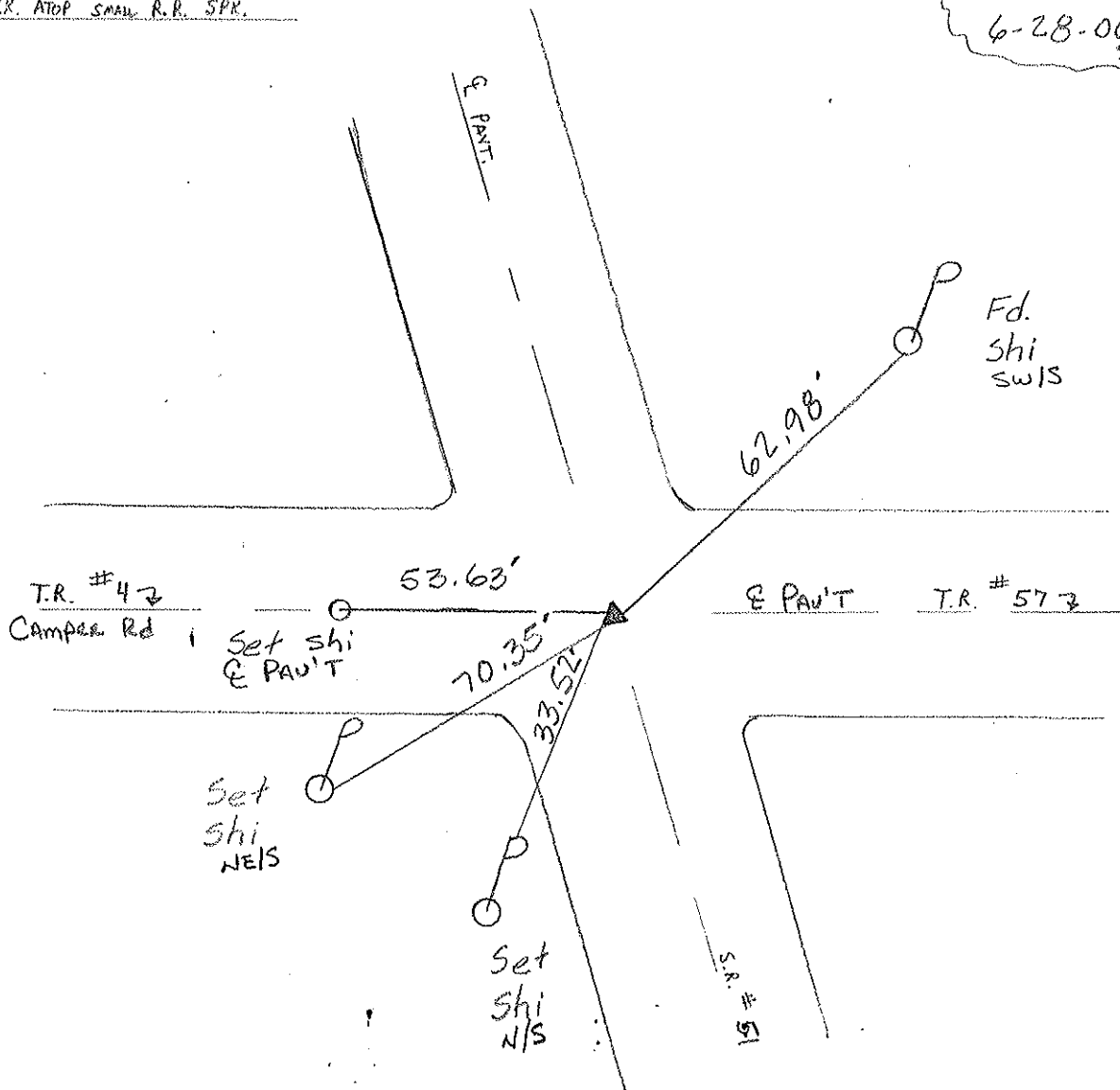
S.L.M. 183 + 23



RECORD: P.I. Δ = 00° 29' 00" RT.

HEADLESS P.K. ATOP SMALL R.R. SPK.

Set PK/washer
6-28-00
SAH



O.D.O.T. DISTRICT 2 SURVEY OFFICE

PERSONNEL _____

REFERENCE NO. 14

SHEET 13 OF _____

NOTES Cronin

H.C. Ripple

R.C. Barbour

Geyman

DATE 9/24/87

WEATHER sunny

TEMP. 66°

ROUTE 51

COUNTY Ottawa

TOWNSHIP Clay

SECTION 12

T 6 N R 13 E

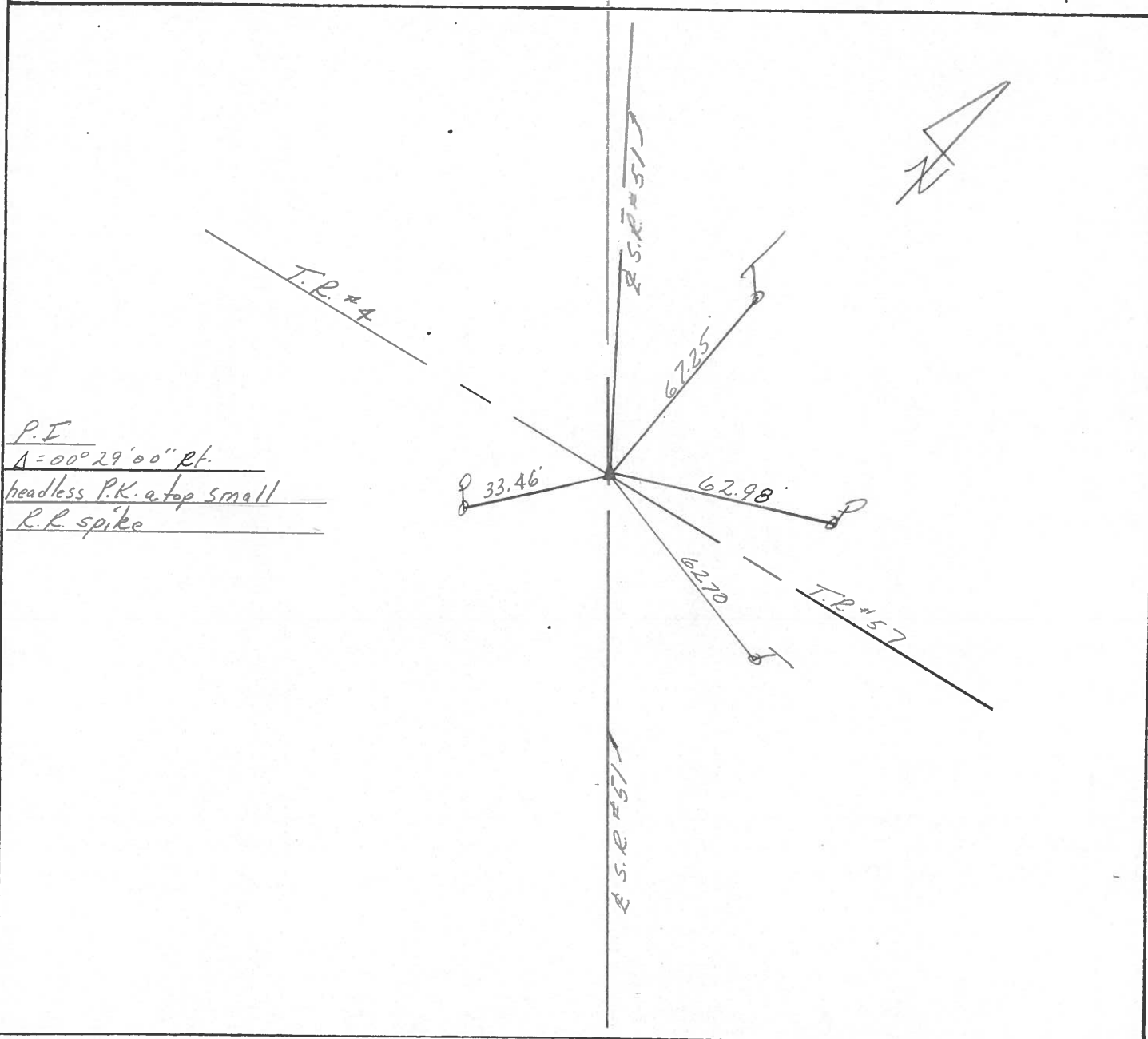
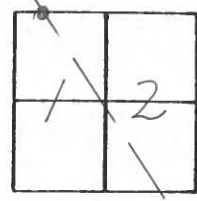
TYPE MONUMENT P.K. & washer

ON SURFACE - BELOW on surface

LEFT - ☉ PAV'T. - RIGHT ☉ Pav't.

___ JO ___ EDGE PAVEMENT

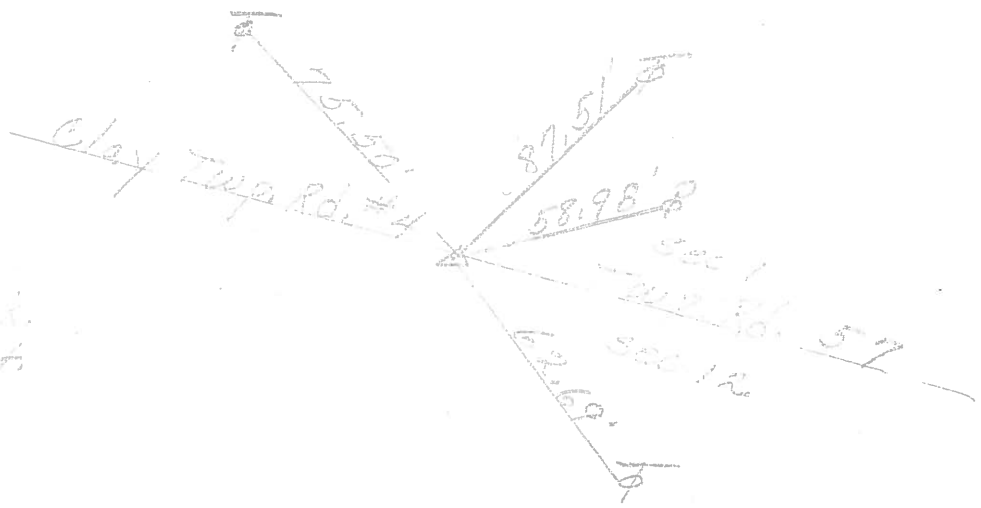
S.L.M. 182 + 62.06



PERSONNEL	TITLE	PERSONNEL	TITLE	COUNTY	DATE
				Ottawa	1-11-72
				S. R. 51	WEATHER Fair
				SEC. 1 & 12	TEMP. 35°
DESCRIPTION	Clay Twp.				JOB NO.
	LEFT	CENTER LINE	RIGHT		

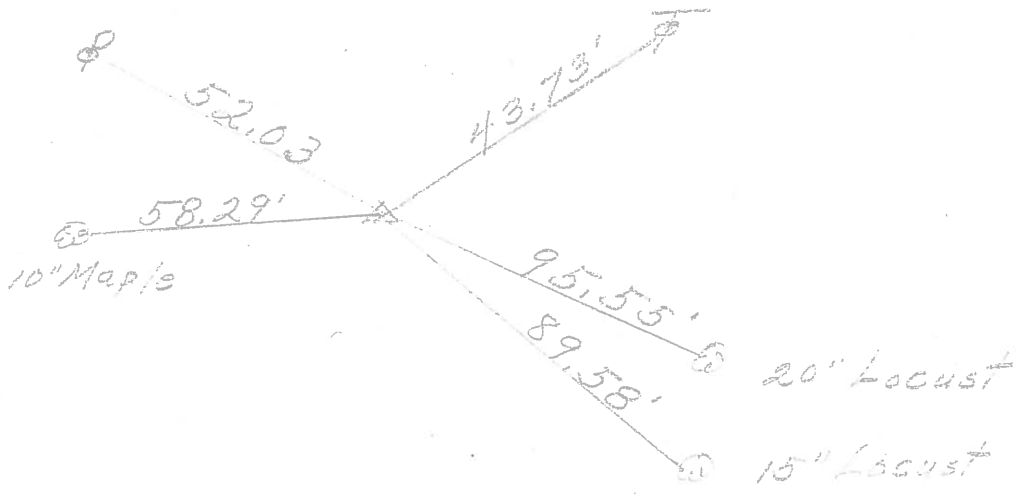
P.I.
 182+62.06
 small R.R. spk.
 $\Delta = 0^\circ 29' \text{ Rt.}$

14.



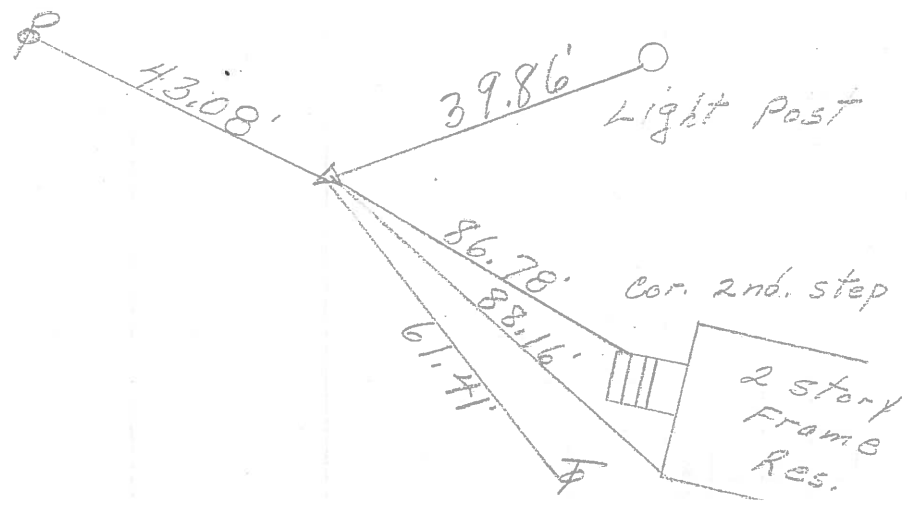
P.I.
 171+57.77
 small R.R. spk.
 $\Delta = 0^\circ 22' \text{ Rt.}$

13



P.I.
 161+69.85
 small R.R. spk.
 $\Delta = 0^\circ 17' \text{ Rt.}$

12



PERSONNEL	TITLE	PERSONNEL	TITLE	COUNTY	DATE
Schneider		Potts		Ottawa	8-10-68
Mosser				S. R. 51	WEATHER Cloudy
Barbour				SEC. Wood Co. Line - East	TEMP. 60°
Redding					
DESCRIPTION	Ties for Control Points				JOB NO.

