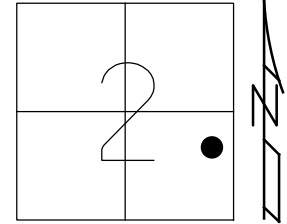


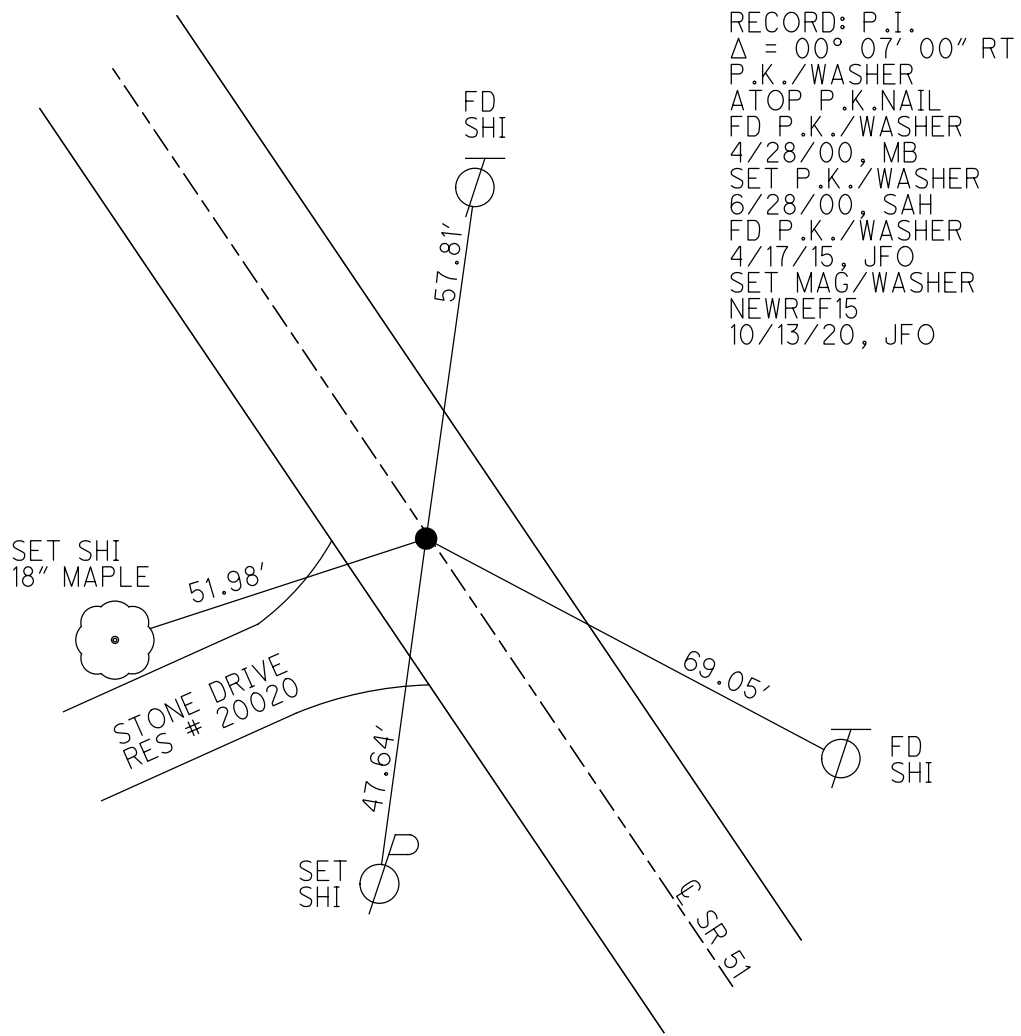
O.D.O.T. DISTRICT 2 SURVEY OFFICE (USE ONLY)

PERSONNEL _____ REFERENCE NO. 15 SHEET 11 OF 18
 NOTES BALBAUGH DATE 4/16/20 ROUTE SR 51
 H.C. LEU WEATHER SUNNY COUNTY OTTAWA
 R.C. BALBAUGH TEMP. 35° TOWNSHIP CLAY
 DWG BY NIESE PID 94324 SECTION 2
 T 6 N R 13 E

TYPE MONUMENT P.K./WASHER
 ON SURFACE - ~~BELOW~~ ON
 OFFSET 12.2' TO RT EDGE PAVEMENT
 STATION: 199+30.67



HORIZ.DATUM: NAD83 2011 GEOID: NAVD88 2012A
 GRID: NORTHING: 670911.233 EASTING: 1743886.159



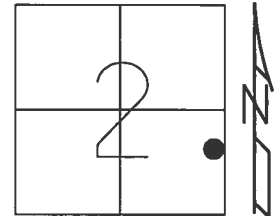
RECORD: P.I.
 $\Delta = 00^\circ 07' 00''$ RT
 P.K./WASHER
 ATOP P.K.NAIL
 FD P.K./WASHER
 4/28/00, MB
 SET P.K./WASHER
 6/28/00, SAH
 FD P.K./WASHER
 4/17/15, JFO
 SET MAG/WASHER
 NEWREF15
 10/13/20, JFO

O.D.O.T. DISTRICT 2 SURVEY OFFICE (USE ONLY)

PERSONNEL _____ REFERENCE NO. 15 SHEET 9 OF 16

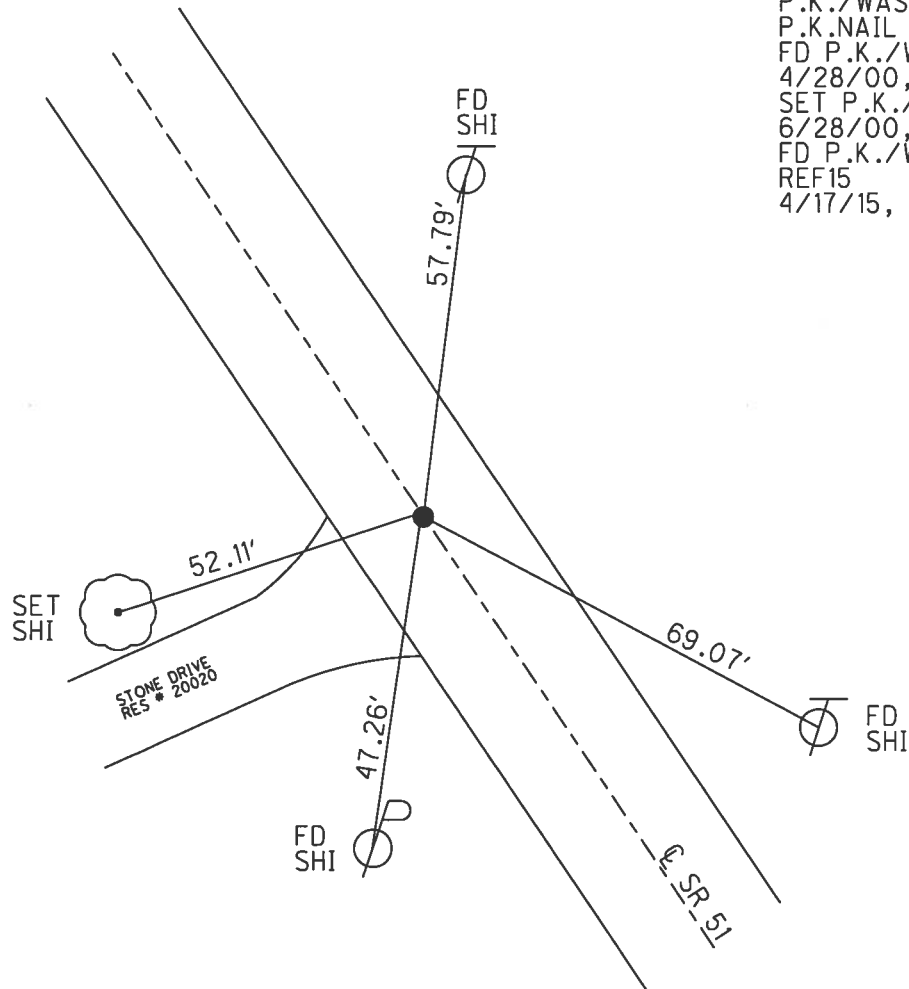
NOTES	<u>BARNHISEL</u>	DATE	<u>4/28/00</u>	ROUTE	<u>SR 51</u>
H.C.	<u>CANTERBURY</u>	WEATHER	<u>SUNNY</u>	COUNTY	<u>OTTAWA</u>
R.C.	<u>MOSER</u>	TEMP.	<u>55°</u>	TOWNSHIP	<u>CLAY</u>
	<u>HOMAN</u>			SECTION	<u>2</u>
				T	<u>6</u> N
				R	<u>13</u> E

TYPE MONUMENT P.K./WASHER
 ON SURFACE - ~~BELOW~~ ON
 LEFT - ☉ PAV'T - RIGHT ON
12.2' TO RT EDGE PAVEMENT
 S.L.M. 199+30.67



Grid: Northing: 670911.138 Easting: 1743866.104

RECORD: P.I.
 $\Delta = 00^{\circ}07' RT$
 P.K./WASHER ATOP
 P.K.NAIL
 FD P.K./WASHER
 4/28/00, MB
 SET P.K./WASHER
 6/28/00, SAH
 FD P.K./WASHER
 REF15
 4/17/15, JFO



O.D.O.T. DISTRICT 2 SURVEY OFFICE

PERSONNEL

REFERENCE NO. 15

SHEET 9 OF 17

NOTES Barnhisel

H.C. Canterbury

R.C. Moser

DATE 4-28-00

WEATHER Sunny

TEMP. 55°

ROUTE 51

COUNTY OTTAWA

TOWNSHIP CLAY

SECTION 2

T 6 N R 13 E

DRAWN BY - HOMAN

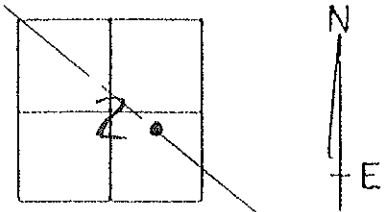
TYPE MONUMENT P.K. FWASHER

ON SURFACE - BELOW Yes

LEFT - C PAV'T. - RIGHT Yes

12.2 TO RT EDGE PAVEMENT

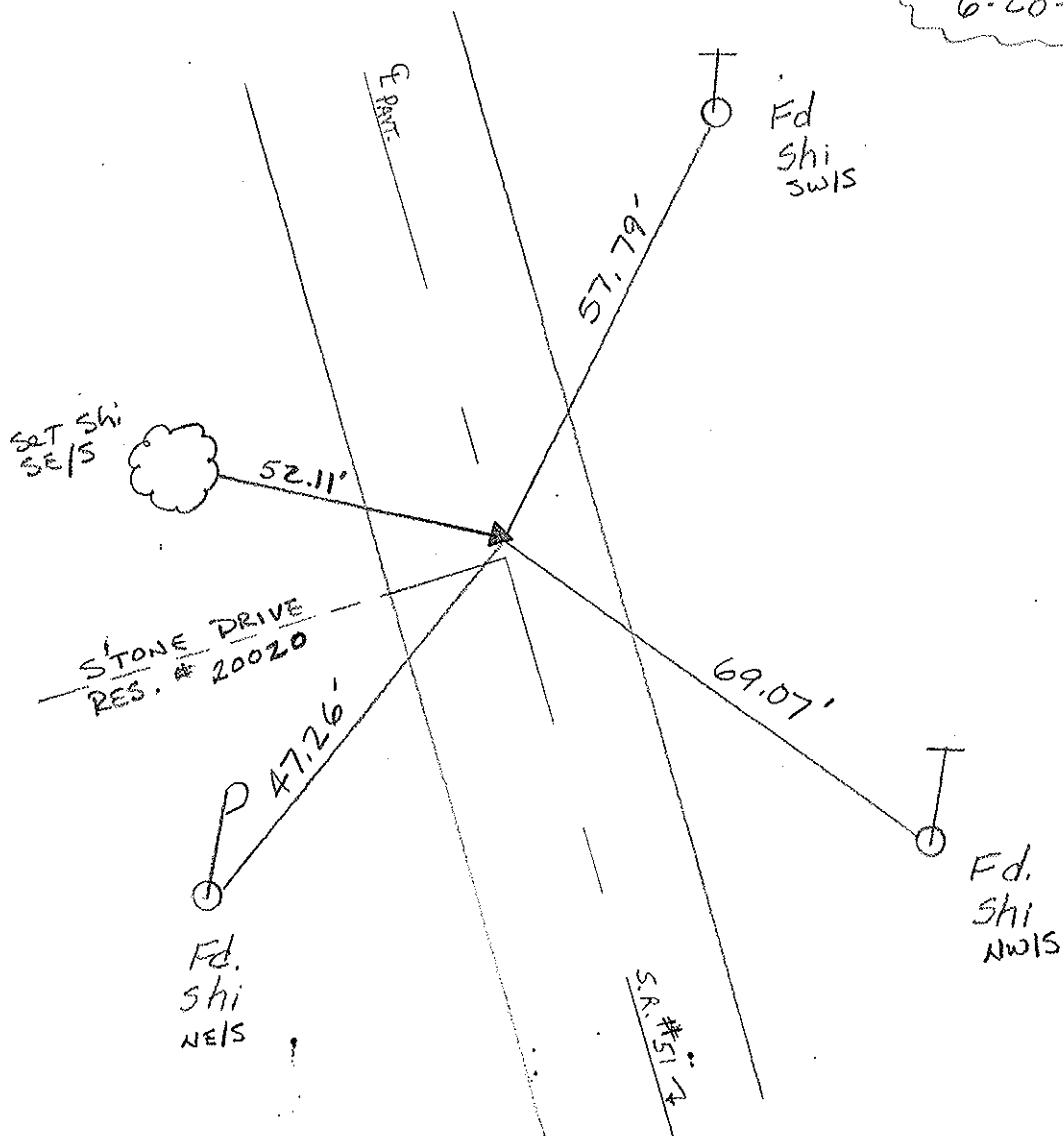
S.L.M. _____



RECORD: P.I. $\Delta = 00^{\circ}07'00''$ RT.

P.K. FWASHER ATOP P.K. BELOW SURFACE

Set Pk/washer
6-28-00
SAH



O.D.O.T. DISTRICT 2 SURVEY OFFICE

PERSONNEL

REFERENCE NO. 15

SHEET 14 OF

NOTES Cronin

H.C. Pipple

R.C. Barbour

Geymen

DATE 9/24/87

WEATHER overcast

TEMP. 64°

ROUTE 51

COUNTY Ottawa

TOWNSHIP Clay

SECTION 2

T 6 N R 13 E

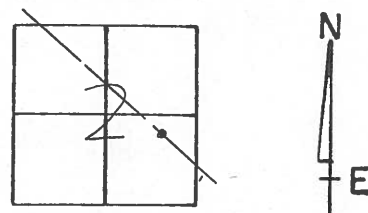
TYPE MONUMENT P.K. washer

ON SURFACE - BELOW on surface

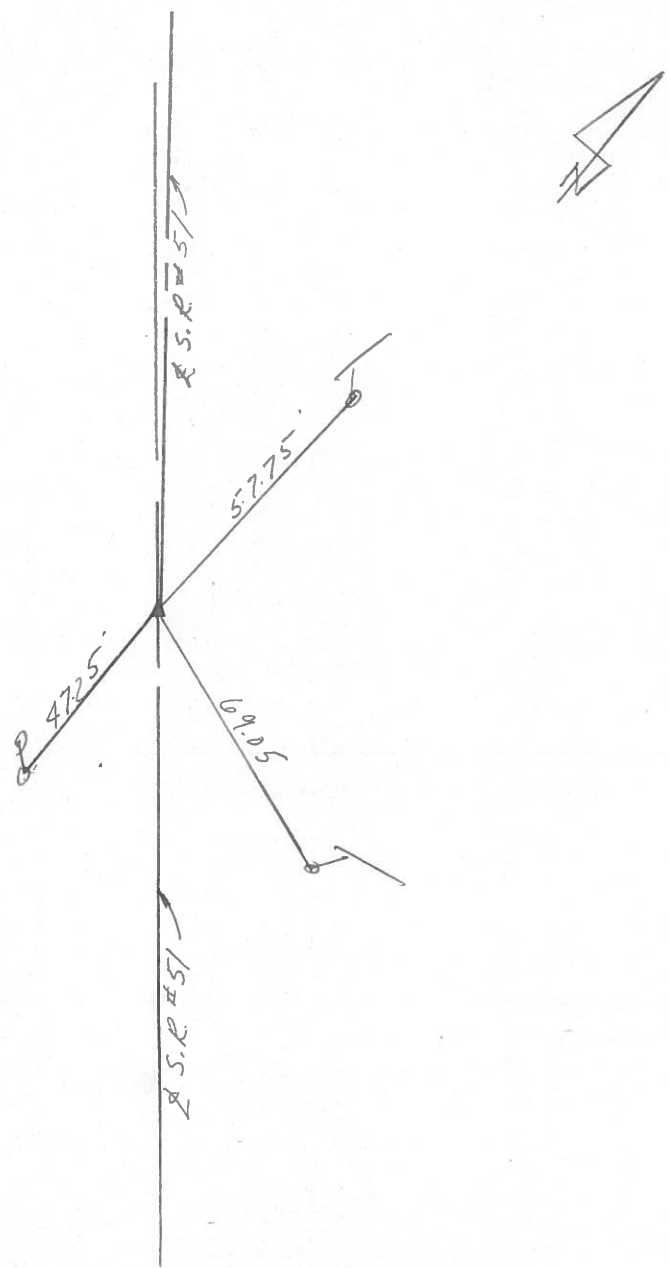
LEFT - ☉ PAV'T. - RIGHT ☉ Pavt.

 TO EDGE PAVEMENT

S.L.M. 199+42.70



P.I
 $\Delta = 00^{\circ}07'00''$ Rt.
P.K. washer at top P.K.
below surface



PERSONNEL TITLE PERSONNEL TITLE

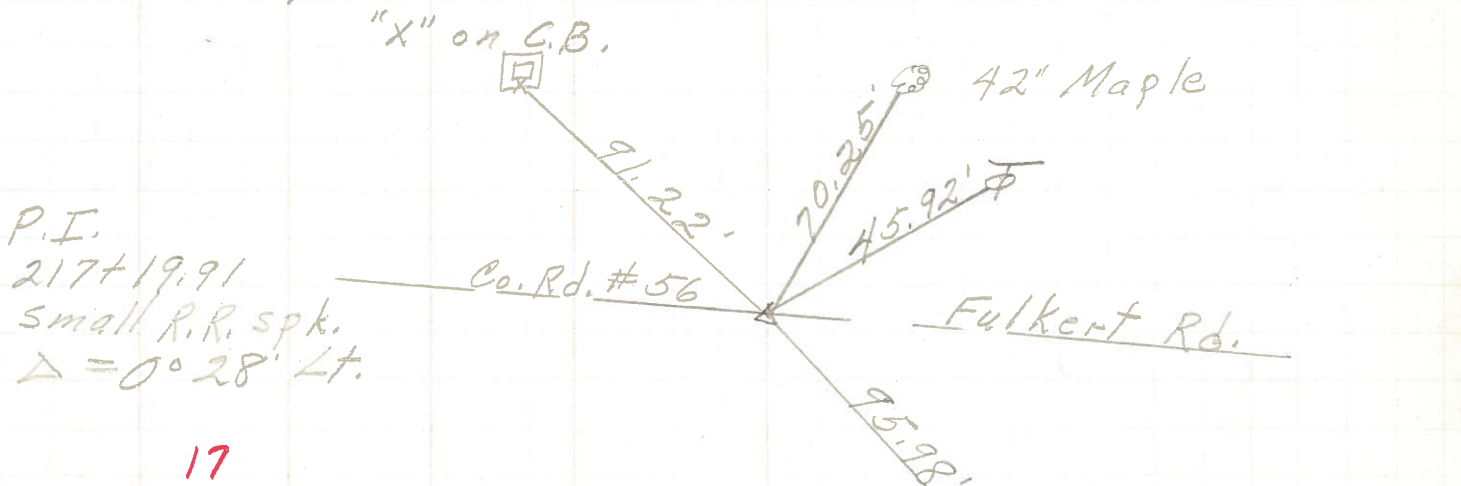
COUNTY Ottawa DATE 1-11-72

S. R. 51 WEATHER Fair

SEC. 2 TEMP. 40°

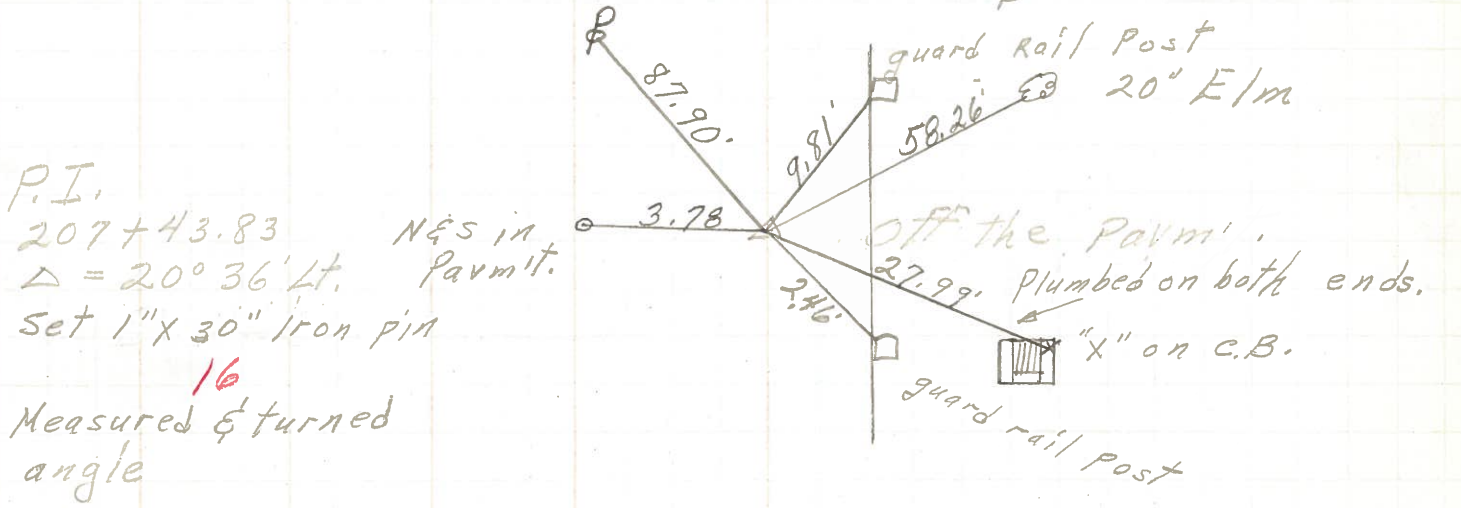
DESCRIPTION Clay Twp. JOB NO. _____

LEFT CENTER LINE RIGHT



P.I.
217+19.91
small R.R. spk.
 $\Delta = 0^\circ 28' Lt.$

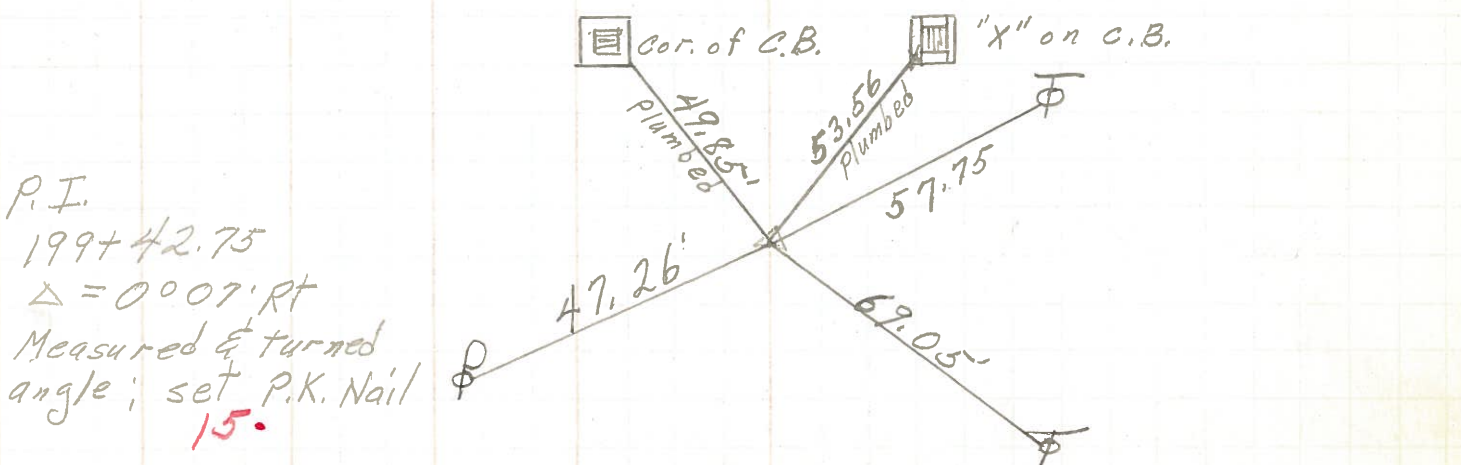
17



P.I.
207+43.83
 $\Delta = 20^\circ 36' Lt.$
Set 1" x 30" iron pin

16

Measured & turned angle



P.I.
199+42.75
 $\Delta = 0^\circ 07' Rt.$
Measured & turned angle; set P.K. Nail

15.