

O.D.O.T. DISTRICT 2 SURVEY OFFICE (USE ONLY)

PERSONNEL

REFERENCE NO. 17

SHEET 13 OF 18

NOTES BALBAUGH

DATE 4/16/20

ROUTE SR 51

H.C. LEU

WEATHER SUNNY

COUNTY OTTAWA

R.C. BALBAUGH

TEMP. 35°

TOWNSHIP CLAY

DWG BY NIESE

PID 94324

SECTION 2

T 6 N R 13 E

TYPE MONUMENT P.K./WASHER

~~ON SURFACE~~ - BELOW 1.5"

OFFSET  $\phi$  PAVEMENT ON LT : RT

- TO - EDGE PAVEMENT

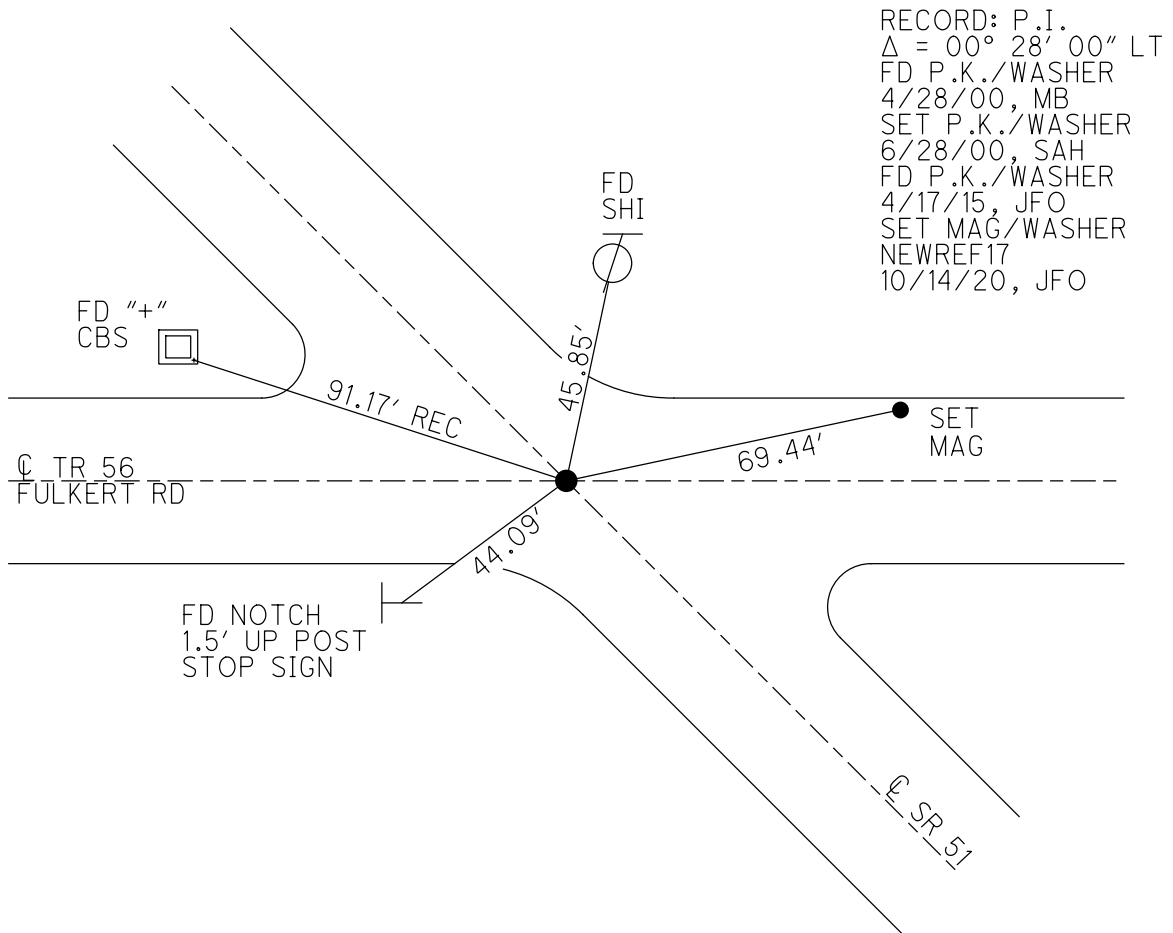
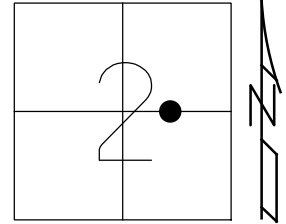
STATION: 217+05.90

HORZ. DATUM: NAD83 2011

GEOID: NAVD88 2012A

GRID: NORTHING: 672149.014

EASTING: 1742653.552

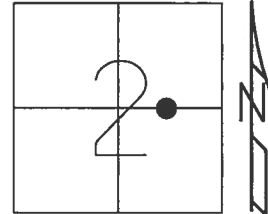


O.D.O.T. DISTRICT 2 SURVEY OFFICE (USE ONLY)

PERSONNEL \_\_\_\_\_ REFERENCE NO. 17 SHEET 11 OF 16

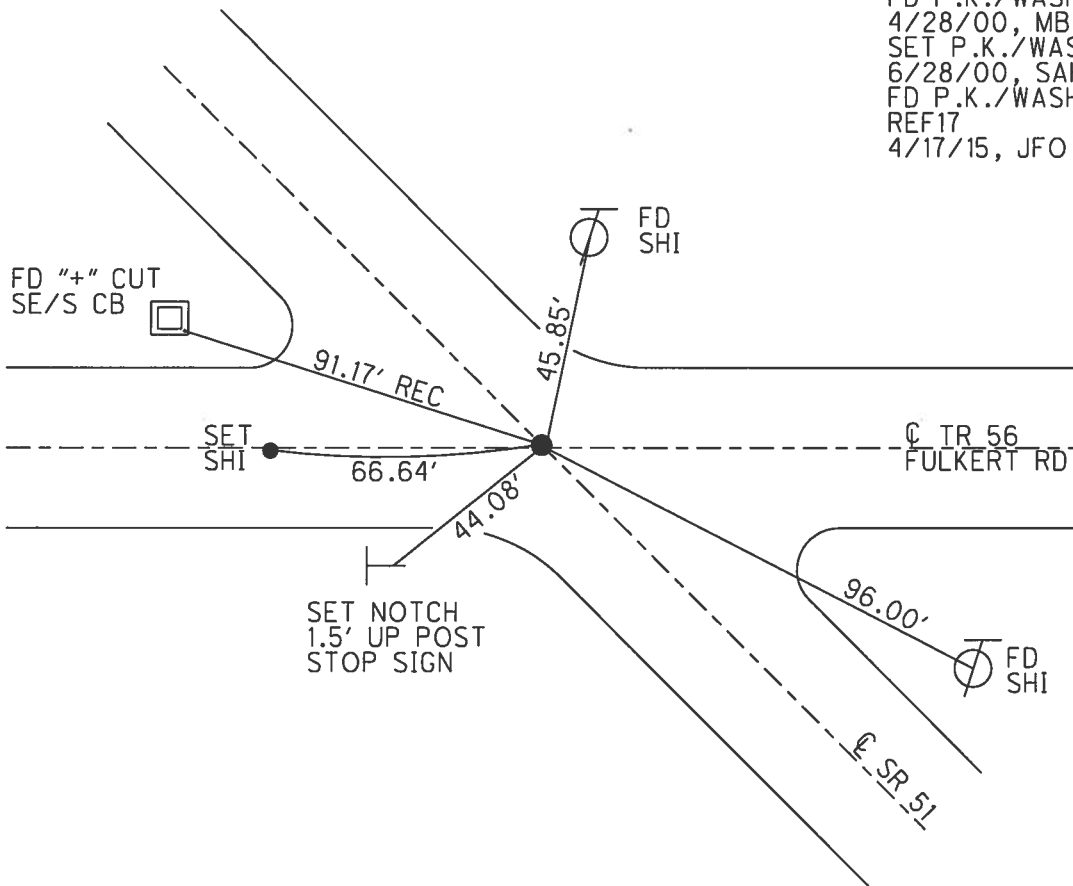
NOTES	<u>BARNHISEL</u>	DATE	<u>4/28/00</u>	ROUTE	<u>SR 51</u>
H.C.	<u>CANTERBURY</u>	WEATHER	<u>SUNNY</u>	COUNTY	<u>OTTAWA</u>
R.C.	<u>MOSER</u>	TEMP.	<u>55°</u>	TOWNSHIP	<u>CLAY</u>
				SECTION	<u>2</u>
				T	<u>6</u> N
				R	<u>13</u> E

TYPE MONUMENT P.K./WASHER  
 ON SURFACE - ~~BELOW~~ ON  
 LEFT - Q PAV'T - RIGHT ON  
- TO - EDGE PAVEMENT  
 S.L.M. 217+05.90



Grid: Northing: 672148.989 Easting: 1742653.542

RECORD: P.I.  
 $\Delta = 00^{\circ}28' \text{ LT}$   
 FD P.K./WASHER  
 4/28/00, MB  
 SET P.K./WASHER  
 6/28/00, SAH  
 FD P.K./WASHER  
 REF17  
 4/17/15, JFO



# O.D.O.T. DISTRICT 2 SURVEY OFFICE

PERSONNEL

REFERENCE NO. 17

SHEET 11 OF 17

NOTES K. MOSER

H.C. M. BARNHISEL

R.C. M. CANTERBURY

DATE 4-28-00

WEATHER Sunny

TEMP. +55°F

ROUTE 51

COUNTY OTTAWA

TOWNSHIP CLAY

SECTION 2

T 6 N 13 E

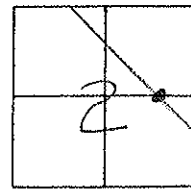
TYPE MONUMENT PK/WASHER

ON SURFACE - BELOW SURFACE

~~LEFT~~ - Q PAVT. - RIGHT Q PAVT.

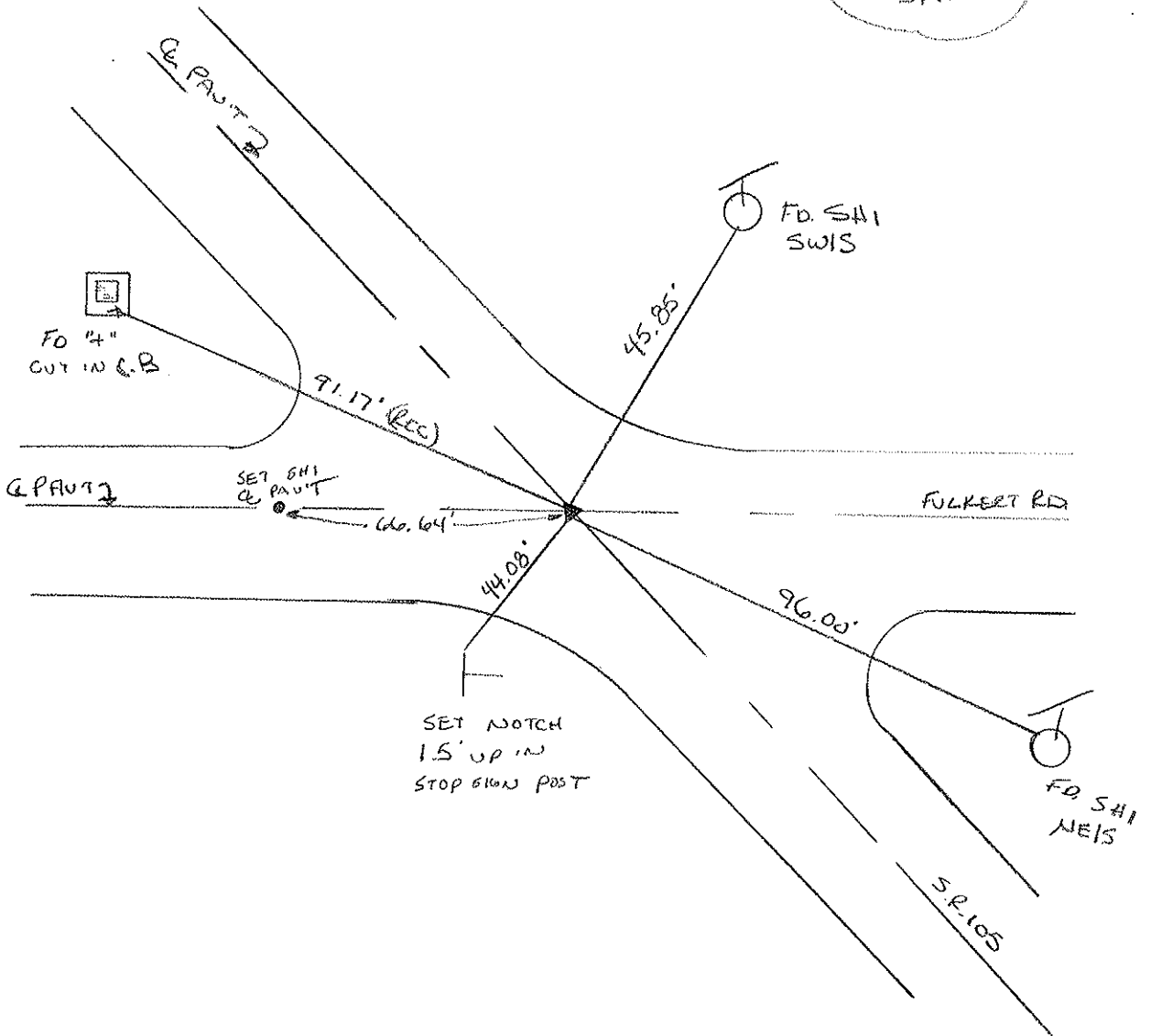
— TO — EDGE PAVEMENT

S.L.M. 217 + 82



RECORD PI:  $\Delta = 00^{\circ} - 28' - 00''$  LT

SET PK/WASHER  
6-28-00  
SAH



FO 4"  
CUT IN C.B.

SET SAH  
Q PAVT

SET NOTCH  
1.5' UP IN  
STOP SIGN POST

FULBERT RD

SR-105

# O.D.O.T. DISTRICT 2 SURVEY OFFICE

PERSONNEL

REFERENCE NO. 17

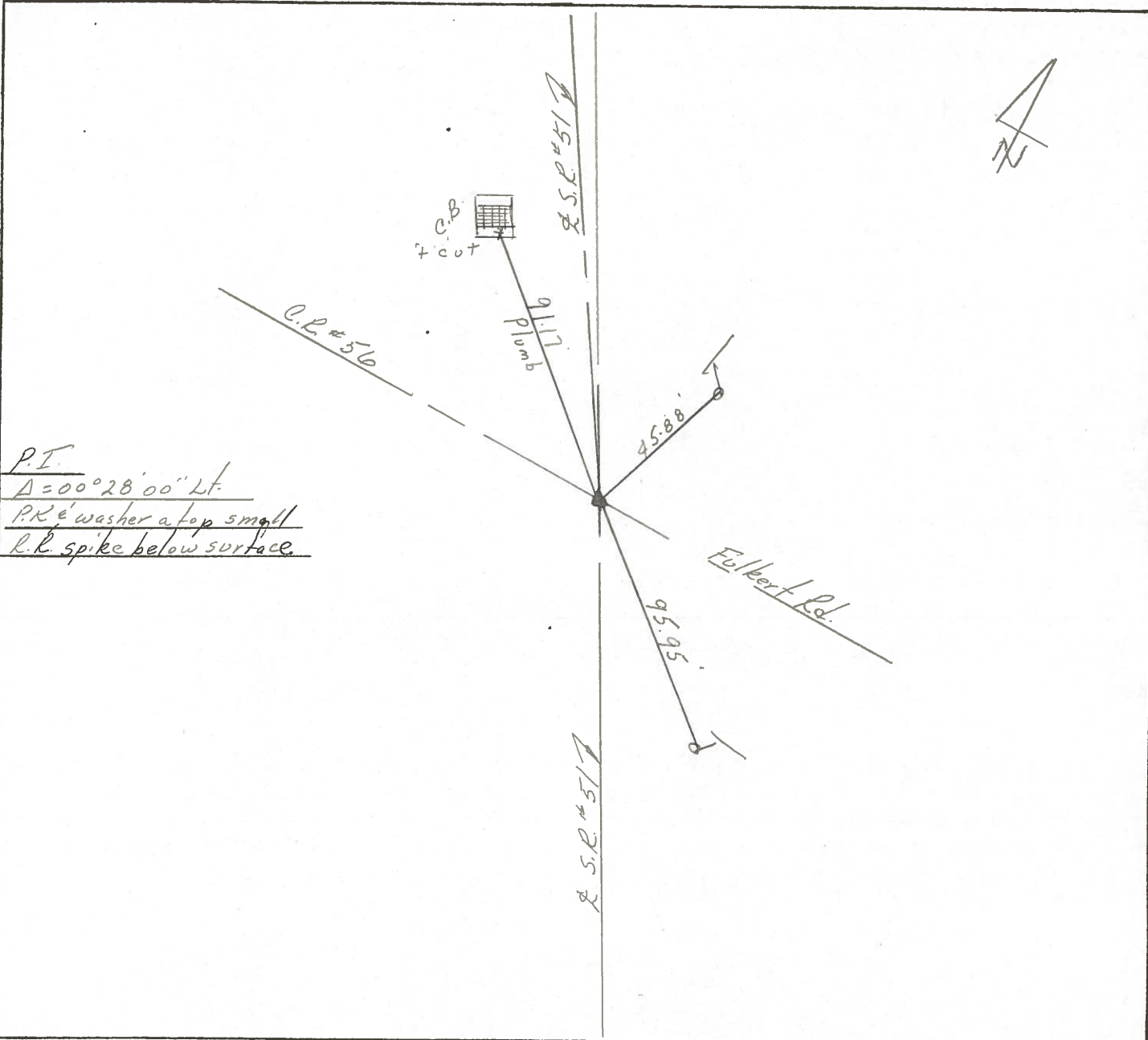
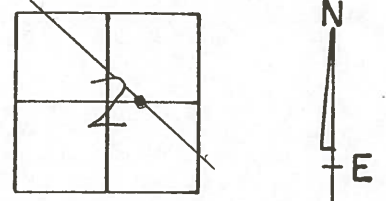
SHEET 16 OF       

NOTES Cronin  
 H.C. Kippje  
 R.C. Barbour  
Geyman

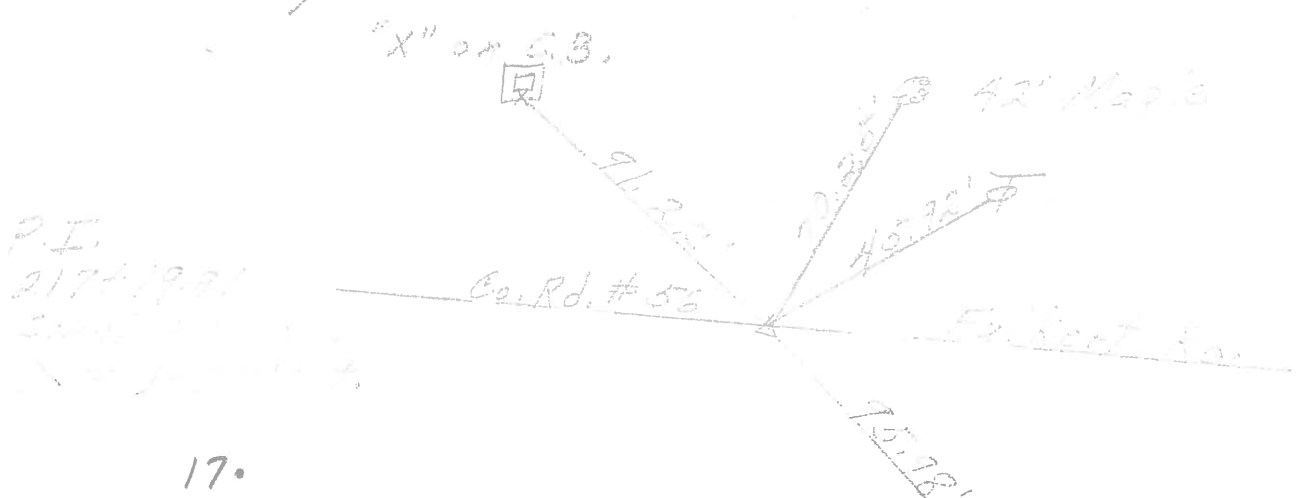
DATE 9/24/87  
 WEATHER overcast  
 TEMP. 66°

ROUTE 51  
 COUNTY Ottawa  
 TOWNSHIP Clay  
 SECTION 2  
T 6 N R 13 E

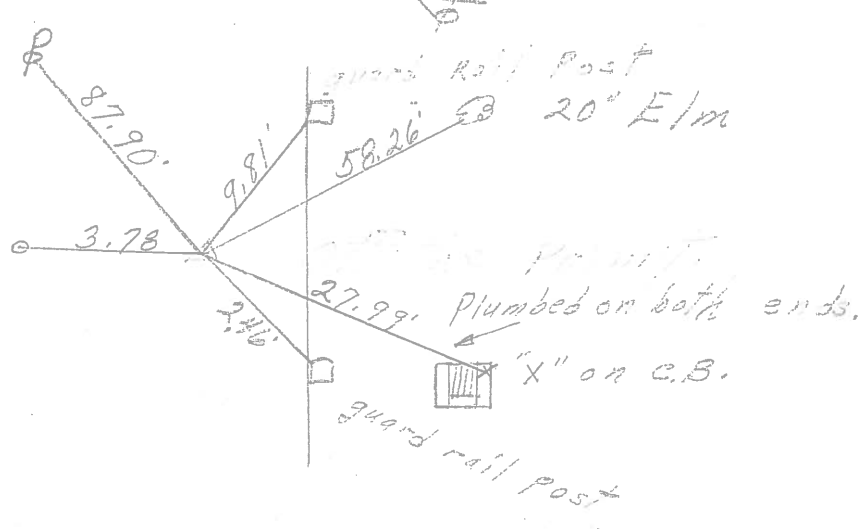
TYPE MONUMENT P.K. washer  
 ON SURFACE - BELOW on surface  
 LEFT- & PAV'T. - RIGHT & Pavt.  
 TO        EDGE PAVEMENT  
 S.L.M. 217+1991



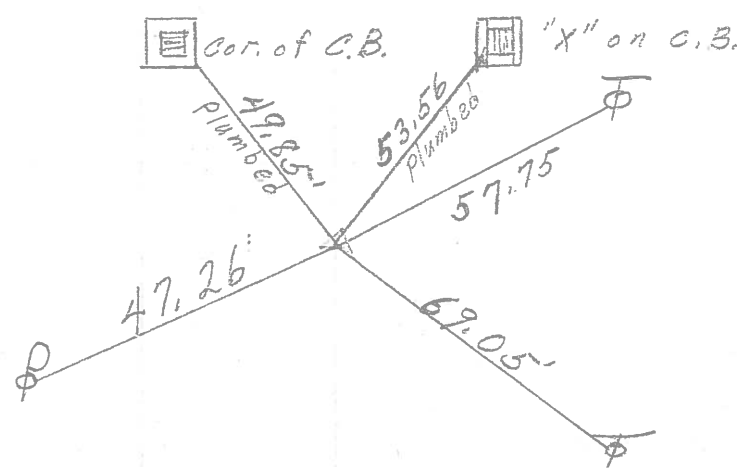
PERSONNEL	TITLE	PERSONNEL	TITLE
		COUNTY <u>Ottawa</u>	DATE <u>1-11-72</u>
		S. R. <u>51</u>	WEATHER <u>Fair</u>
		SEC. <u>2</u>	TEMP. <u>40°</u>
DESCRIPTION <u>Clay Twp.</u>		LEFT	CENTER LINE
		RIGHT	JOB NO. <u> </u>



P.I.  
 257+43.83  
 $\Delta = 20^\circ 36'$   
 Set 1" X 30" Iron pin  
 16  
 Measured & turned angle



P.I.  
 199+42.75  
 $\Delta = 0^\circ 07'$  RT  
 Measured & turned angle; set P.K. Nail  
 15



PERSONNEL	TITLE	PERSONNEL	TITLE	COUNTY	DATE
Schneider		Potts		Ottawa	8-10-68
Mosser				S. R. 51	WEATHER Cloudy
Barbour				SEC. Wood Co. Line - East	TEMP. 60°
Redding					

DESCRIPTION Ties for Control Points JOB NO. \_\_\_\_\_

