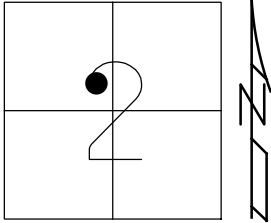


O.D.O.T. DISTRICT 2 SURVEY OFFICE (USE ONLY)

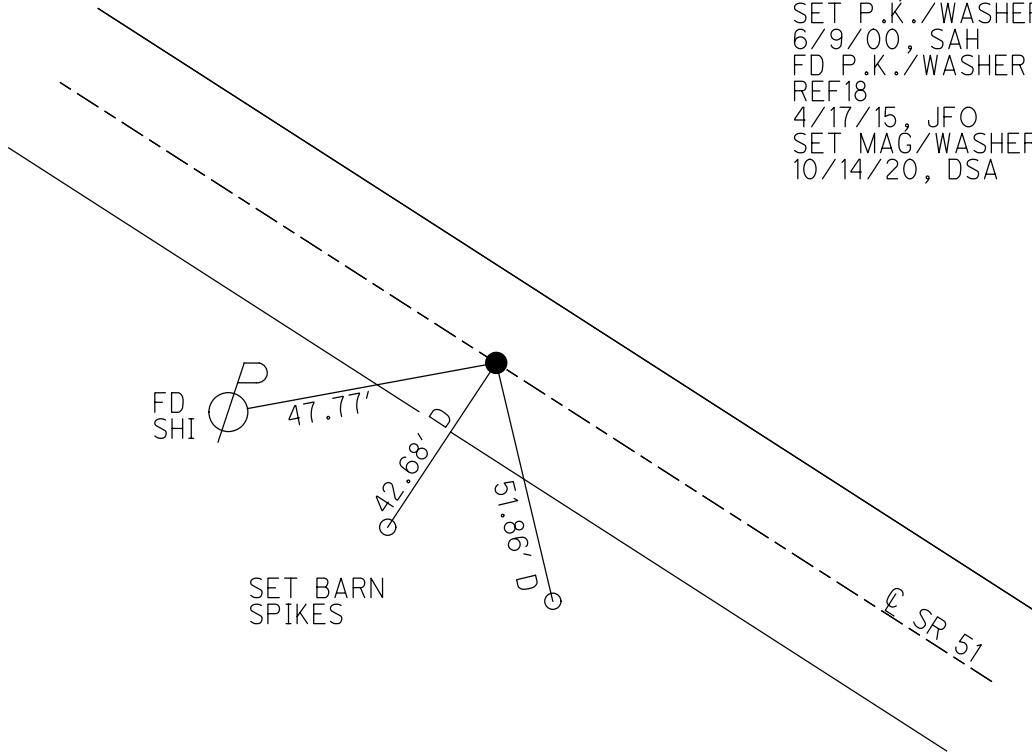
PERSONNEL _____ REFERENCE NO. 18 SHEET 14 OF 18
 NOTES BALBAUGH DATE 4/16/20 ROUTE SR 51
 H.C. LEU WEATHER PARTLY CLOUDY COUNTY OTTAWA
 R.C. BALBAUGH TEMP. 39° TOWNSHIP CLAY
 DWG BY NIESE PID 94324 SECTION 2
 T 6 N R 13 E

TYPE MONUMENT P.K.NAIL
 ON SURFACE - ~~BELOW~~ ON
 OFFSET 0.7' LT : ~~RT~~
12.5' TO LT EDGE PAVEMENT
 STATION: 224+55.80



HORIZ.DATUM: NAD83 2011 GEOID: NAVD88 2012A
 GRID: NORTHING: 672583.254 EASTING: 1742042.188

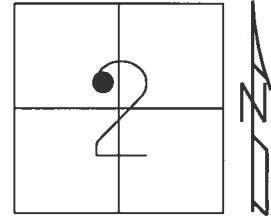
RECORD: P.I.
 $\Delta = 00^\circ 52' 00''$ RT
 P.K./WASHER
 ATOP SM.R.R.SPIKE
 FD P.K./WASHER
 5/1/00, MB
 SET P.K./WASHER
 6/9/00, SAH
 FD P.K./WASHER
 REF18
 4/17/15, JFO
 SET MAG/WASHER
 10/14/20, DSA



O.D.O.T. DISTRICT 2 SURVEY OFFICE (USE ONLY)

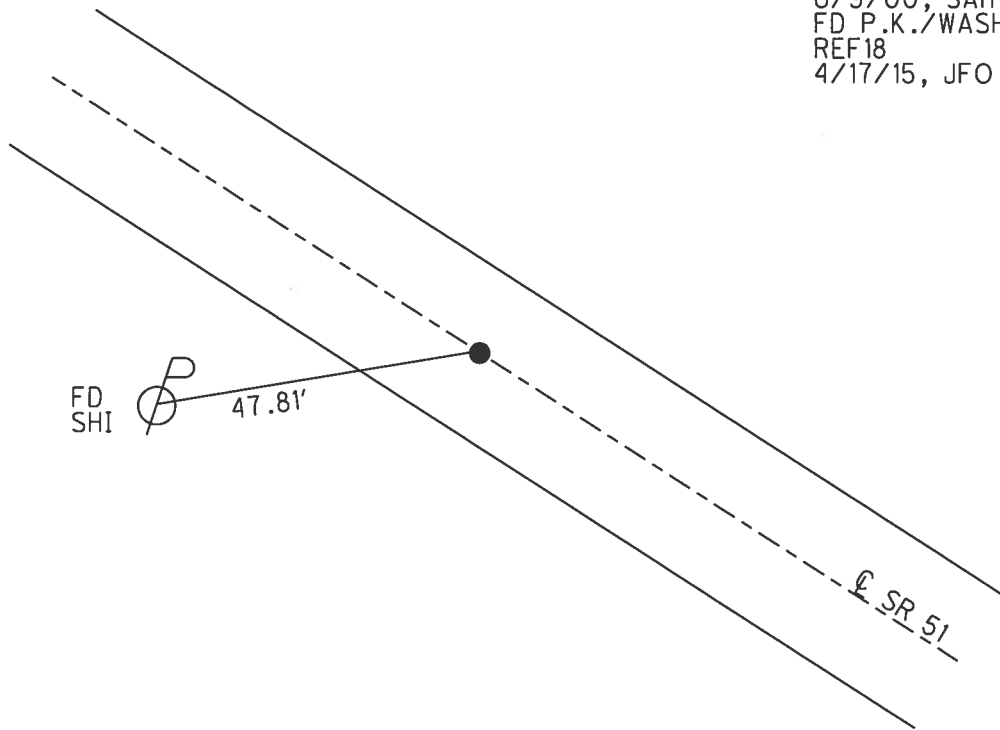
PERSONNEL _____ REFERENCE NO. 18 SHEET 12 OF 16
NOTES MOSE DATE 5/1/00 ROUTE SR 51
H.C. BARNHEISEL WEATHER SUNNY COUNTY OTTAWA
R.C. CANTERBURY TEMP. 55° TOWNSHIP CLAY
SECTION 2
T 6 N R 13 E

TYPE MONUMENT P.K./WASHER
ON SURFACE - ~~BELOW~~ ON _____
LEFT - ☉ PAV'T - ~~RIGHT~~ 0.5'
12.5' TO LT EDGE PAVEMENT
S.L.M. 224+55.80



Grid: Northing: 672583.262 Easting: 1742042.191

RECORD: P.I.
 $\Delta = 00^{\circ}52' RT$
P.K./WASHER ATOP
SM.R.R.SPIKE
FD P.K./WASHER
5/1/00, MB
SET P.K./WASHER
6/9/00, SAH
FD P.K./WASHER
REF18
4/17/15, JFO



O.D.O.T. DISTRICT 2 SURVEY OFFICE

PERSONNEL

REFERENCE NO. 18

SHEET 12 OF 17

NOTES Barnhisel

H.C. Canterbury

R.C. Moser

DATE 5-1-00

WEATHER Cloudy

TEMP. 55°

ROUTE 51

COUNTY Ottawa

TOWNSHIP Clay

SECTION 2

T 6 N R 13 E

DRAWN BY - Homan

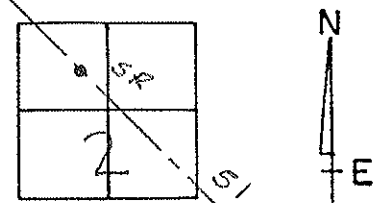
TYPE MONUMENT PK & Washer

ON SURFACE - BELOW Yes

LEFT - & PAV'T. - RIGHT 0.5

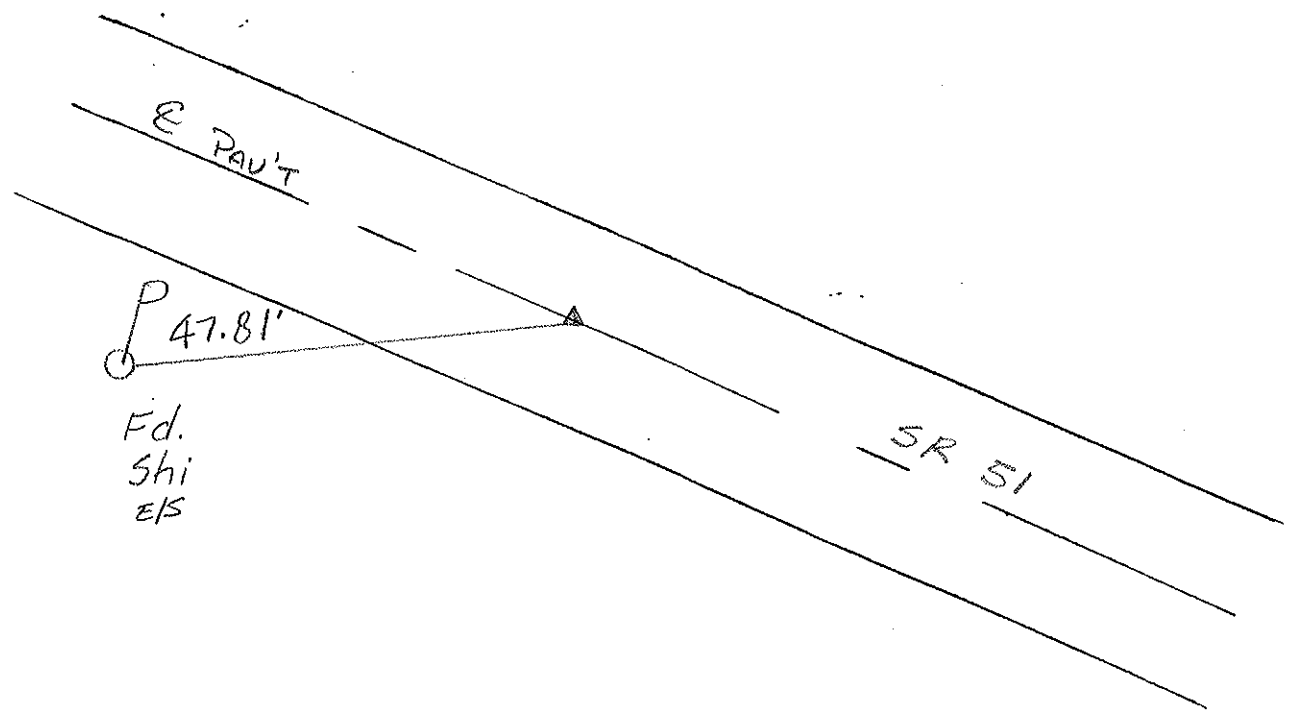
12.5 TO Lt EDGE PAVEMENT

S.L.M. 225+35



PI "RECORD"
 $\Delta = 00^{\circ} 52' 00''$ RT
 PK & Washer over small
 RR spike below surface

Set PK/washer
 6-9-00
 SAH



O.D.O.T. DISTRICT 2 SURVEY OFFICE

PERSONNEL

REFERENCE NO. 18

SHEET 17 OF

NOTES Cronin

H.C. Ripple

R.C. Barbour

Geyman

DATE 9/24/87

WEATHER overcast

TEMP. 66°

ROUTE 51

COUNTY Ottawa

TOWNSHIP Clay

SECTION 2

T 6 N R 13 E

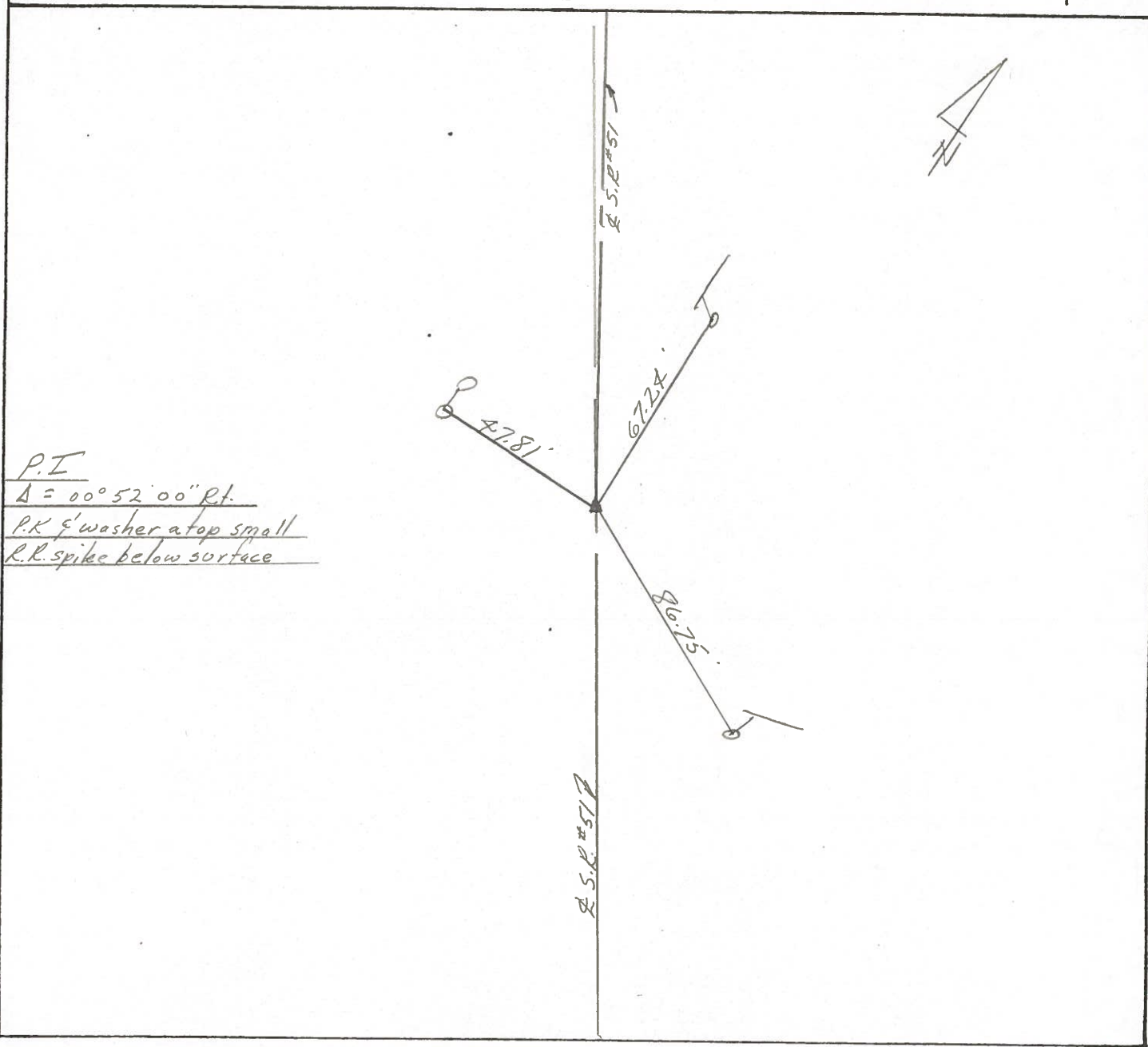
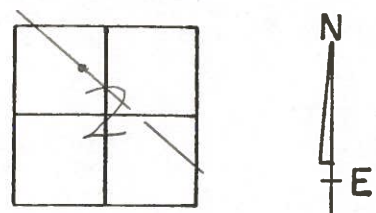
TYPE MONUMENT P.K. & washer

ON SURFACE - BELOW on surface

LEFT - & PAV'T. - RIGHT & Pav't.

TO EDGE PAVEMENT

S.L.M. 224 + 69.80



P.I.
 $\Delta = 00^{\circ}52'00''$ Rt.
P.K. & washer at top small
R.R. spike below surface

PERSONNEL TITLE PERSONNEL TITLE

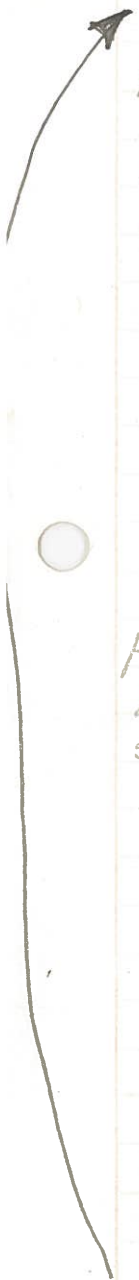
COUNTY Ottawa DATE 1-11-72

S. R. 51 WEATHER Cloudy

SEC. 2 TEMP. 35°

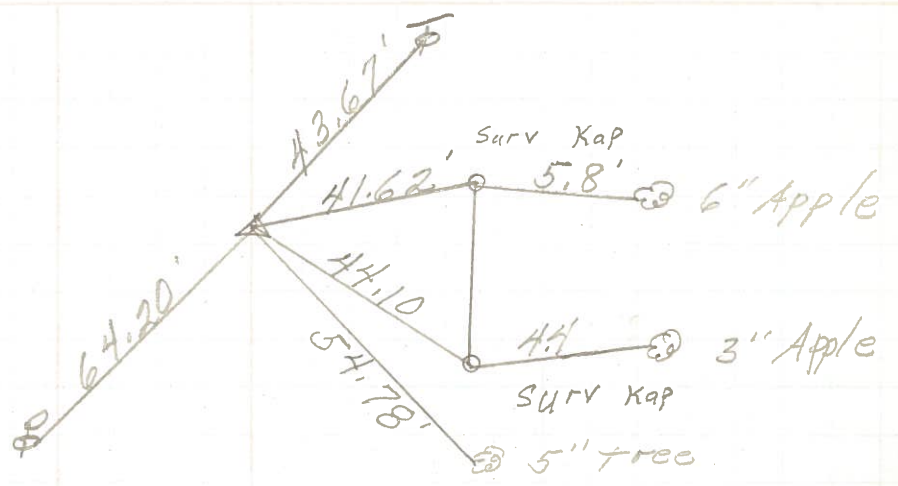
DESCRIPTION Clay Twp. JOB NO. _____

LEFT CENTER LINE RIGHT



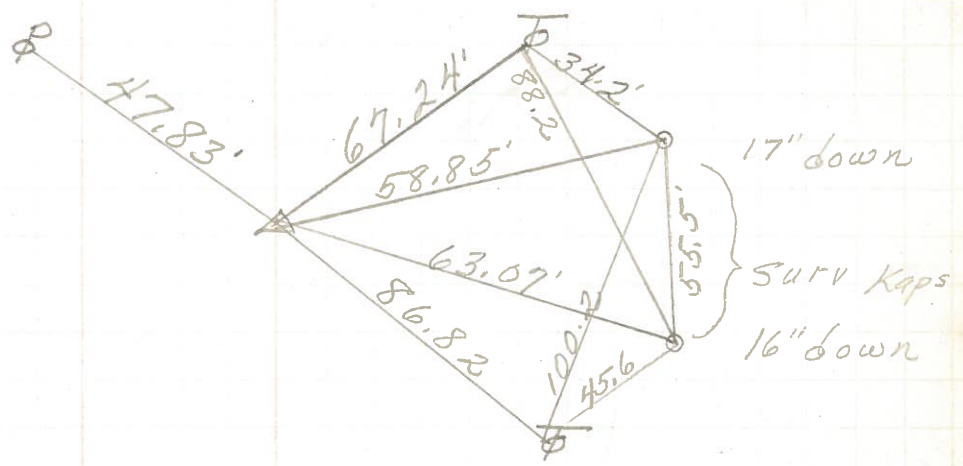
P.I.
232+20.13
Small R.R. spk.
 $\Delta = 0^{\circ} 30''$ RT.

19



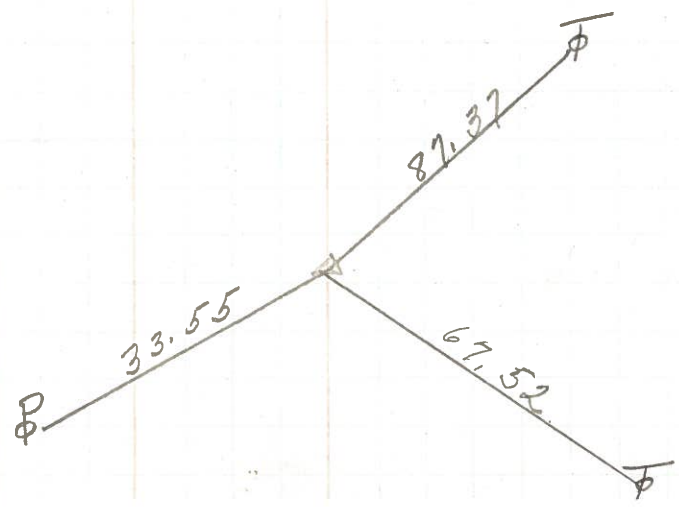
P.I.
224+69.80
Small R.R. spk.
 $\Delta = 0^{\circ} 52''$ RT.

19.



P.I.
243+69.95
 $\Delta = 3^{\circ} 51''$ RT.
Fd. P.K. Nail
1/4" down

18 20



PERSONNEL TITLE PERSONNEL TITLE

Schneider Potts

COUNTY Ottawa DATE 7-1-68

Mosser

S. R. 51 WEATHER Fair

Barbour

SEC. Wood Co. Line - East TEMP. 90°

Redding

DESCRIPTION Ties for Control Points JOB NO.

