

O.D.O.T. DISTRICT 2 SURVEY OFFICE (USE ONLY)

PERSONNEL

REFERENCE NO. 19

SHEET 15 OF 18

NOTES BALBAUGH

DATE 4/16/20

ROUTE SR 51

H.C. LEU

WEATHER WINDY

COUNTY OTTAWA

R.C. BALBAUGH

TEMP. 40°

TOWNSHIP CLAY

SECTION 2

DWG BY NIESE PID 94324

T 6 N R 13 E

TYPE MONUMENT MAG NAIL

ON SURFACE - ~~BELOW~~ ON

OFFSET CL PAVEMENT 0.8' LT : ~~RT~~

12.5' TO LT EDGE PAVEMENT

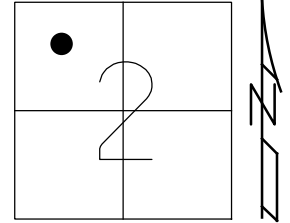
STATION: 232+05.52

HORIZ.DATUM: NAD83 2011

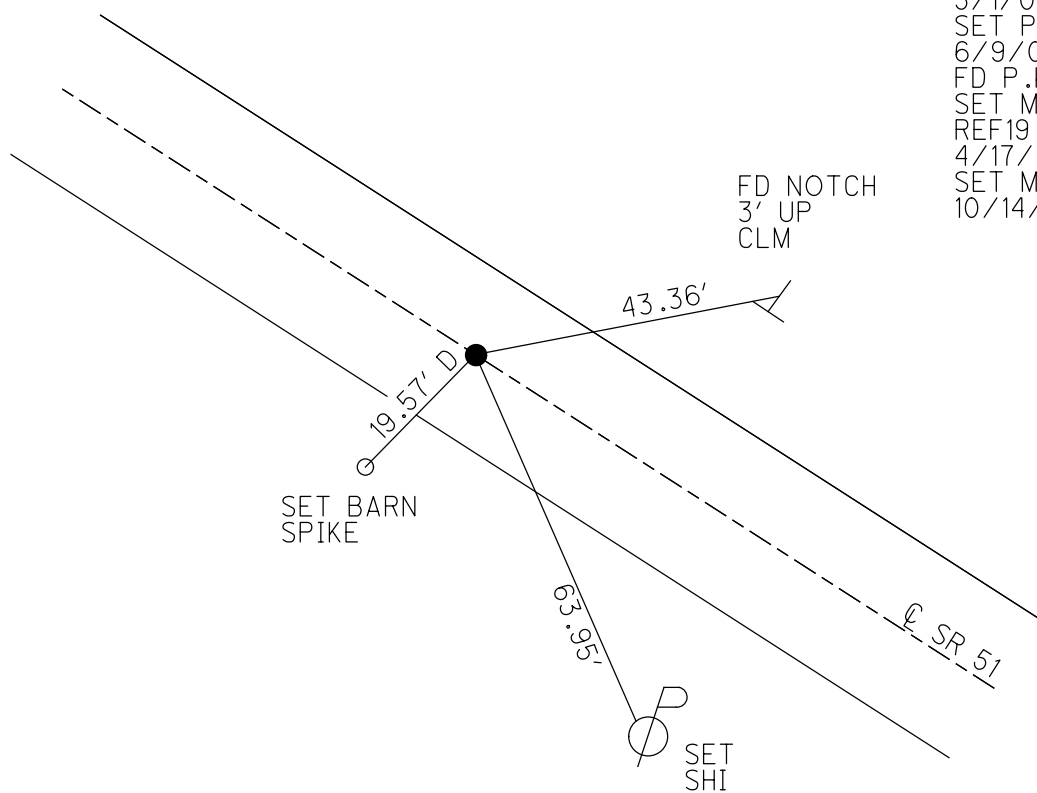
GEOID: NAVD88 2012A

GRID: NORTHING: 673026.658

EASTING: 1741437.668



RECORD: P.I.
 $\Delta = 00^{\circ} 30' 00''$ RT
 FD P.K./WASHER
 ATOP SM.R.R.SPIKE
 FD P.K./WASHER
 5/1/00, MB
 SET P.K./WASHER
 6/9/00, SAH
 FD P.K.SHANK
 SET MAG/WASHER
 REF19
 4/17/15, JFO
 SET MAG/WASHER
 10/14/20, DSA

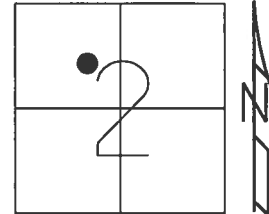


O.D.O.T. DISTRICT 2 SURVEY OFFICE (USE ONLY)

PERSONNEL _____ REFERENCE NO. 19 SHEET 13 OF 16

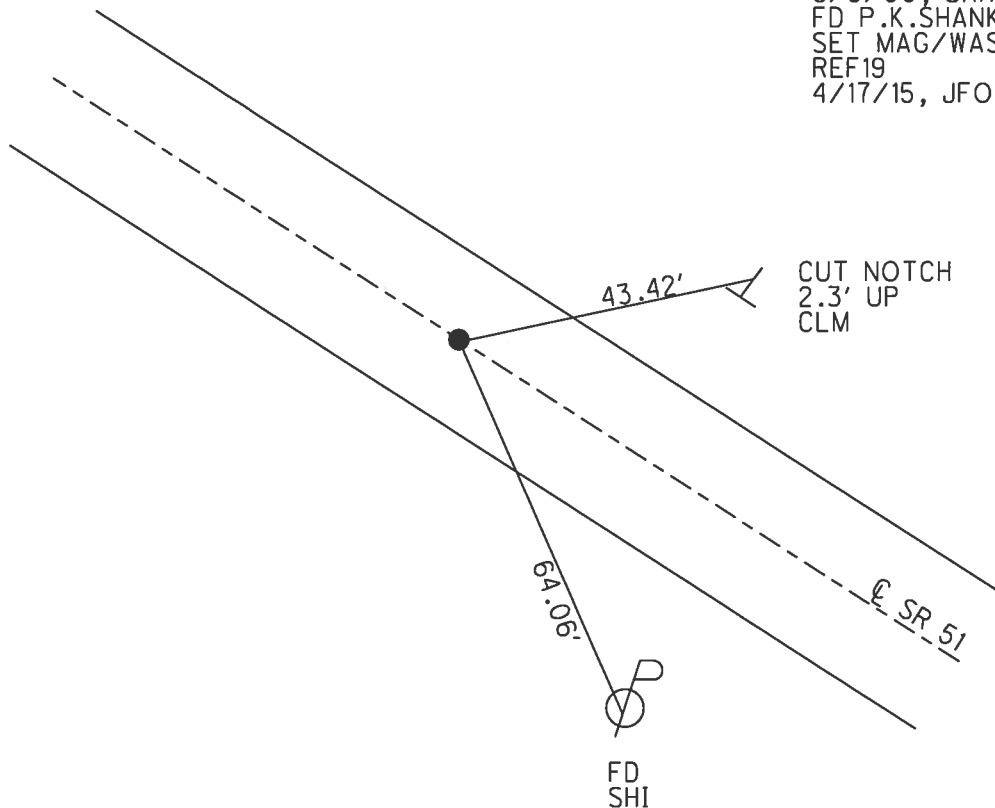
NOTES	<u>BARNHESEL</u>	DATE	<u>5/1/00</u>	ROUTE	<u>SR 51</u>
H.C.	<u>CANTERBURY</u>	WEATHER	<u>SUNNY</u>	COUNTY	<u>OTTAWA</u>
R.C.	<u>MOSER</u>	TEMP.	<u>55°</u>	TOWNSHIP	<u>CLAY</u>
	<u>HOMAN</u>			SECTION	<u>2</u>
				T	<u>6</u> N R <u>13</u> E

TYPE MONUMENT P.K./WASHER
~~ON SURFACE~~ - BELOW 1 1/2"
 LEFT - CL PAV'T - ~~RIGHT~~ 0.3'
12.5' TO LT EDGE PAVEMENT
 S.L.M. 232+05.52



Grid: Northing: 673026.707 Easting: 1741437.680

RECORD: P.I.
 $\Delta = 00^{\circ}30' RT$
 P.K./WASHER ATOP
 SM.R.R.SPIKE
 FD P.K./WASHER
 5/1/00, MB
 SET P.K./WASHER
 6/9/00, SAH
 FD P.K.SHANK
 SET MAG/WASHER
 REF19
 4/17/15, JFO



O.D.O.T. DISTRICT 2 SURVEY OFFICE

PERSONNEL

REFERENCE NO. 19

SHEET 13 OF 17

NOTES Barnhisel

H.C. Canterbury

R.C. Moser

DRAWN BY - HOMAN

DATE 5-1-00

WEATHER Cloudy

TEMP. 55°

ROUTE 51

COUNTY Ottawa

TOWNSHIP Clay

SECTION 2

T 6 N R 13 E

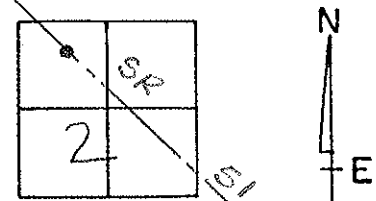
TYPE MONUMENT PK & Washer

ON SURFACE - BELOW 1 1/2"

LEFT - & PAW'T. - RIGHT 0.3

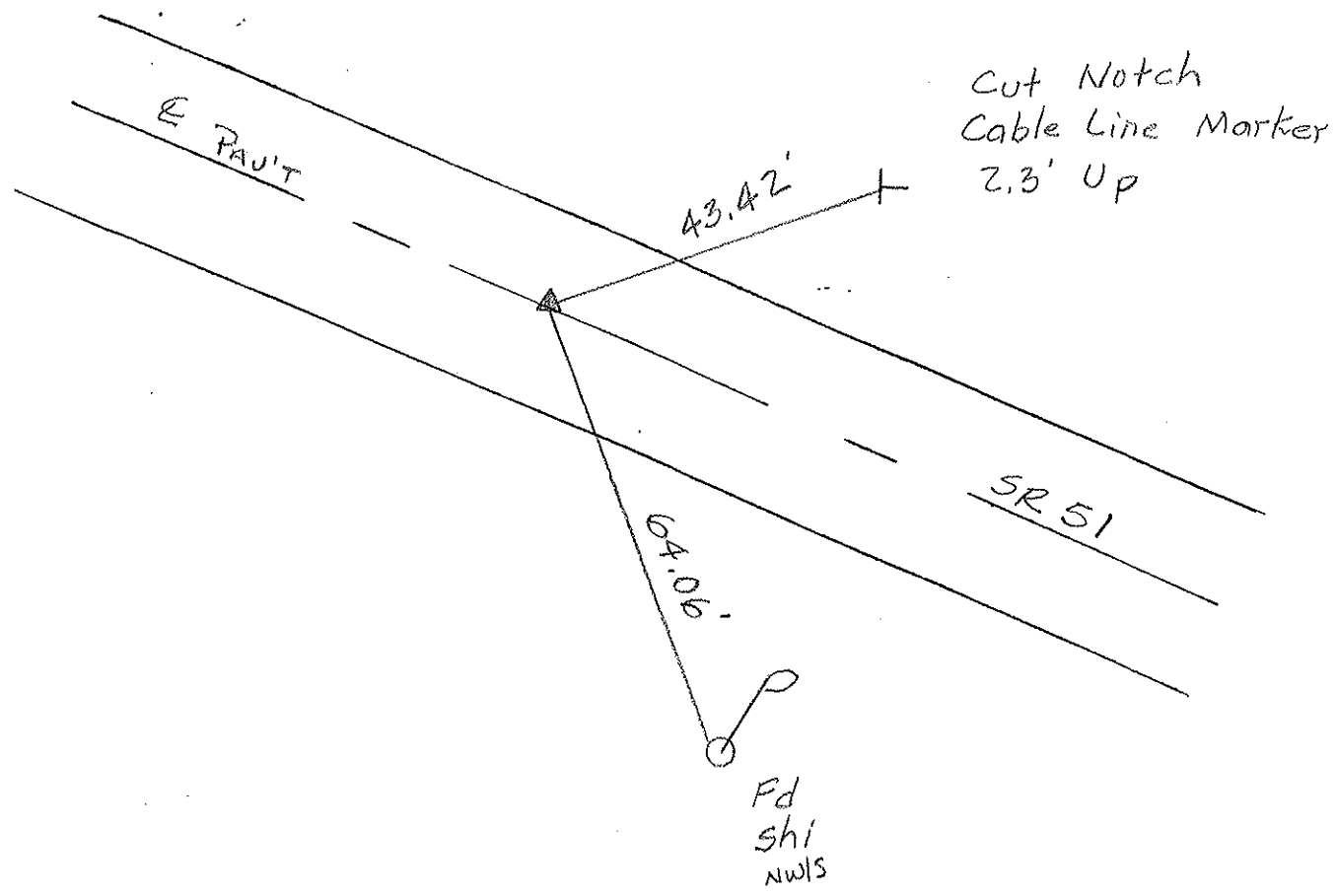
12.5 TO Lt EDGE PAVEMENT

S.L.M. 232 + 88



PI "RECORD"
 $\Delta = 00^{\circ}30'00''$ R+
 PK & Washer over small
 RR spike below surface

Set PK/washer
 6-9-00
 SAH



O.D.O.T. DISTRICT 2 SURVEY OFFICE

PERSONNEL

REFERENCE NO. 19

SHEET 18 OF

NOTES Cronin

H.C. Ripple

R.C. Barbour

Geyman

DATE 9/24/87

WEATHER overcast

TEMP. 66°

ROUTE 51

COUNTY Ottawa

TOWNSHIP Clay

SECTION 2

T 6 N R 13 E

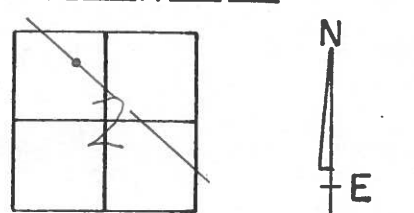
TYPE MONUMENT P.K. & washer

ON SURFACE - BELOW on surface

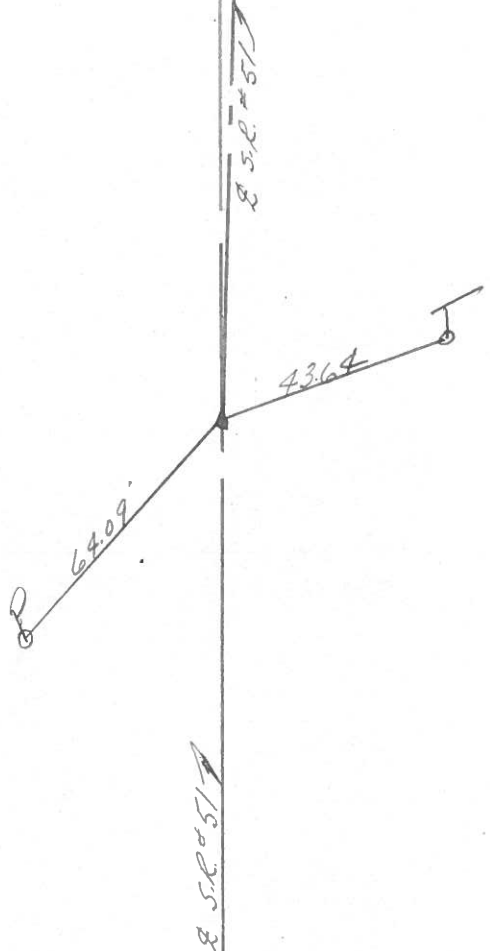
LEFT - € PAV'T. - RIGHT ± Pav't.

 TO EDGE PAVEMENT

S.L.M. 232+20.13



P.I.
A = 00° 30' 00" Rt.
P.K. at top small R.R. spike
below surface



PERSONNEL TITLE PERSONNEL TITLE

COUNTY Ottawa DATE 1-11-72

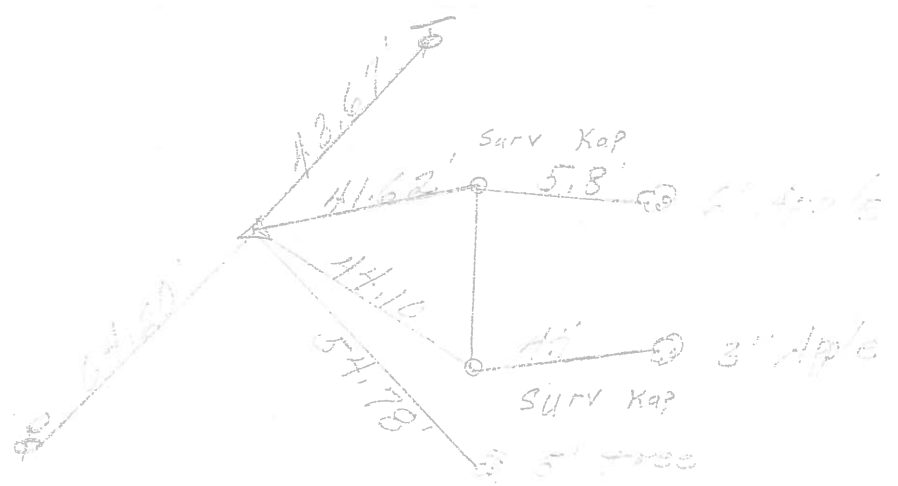
S. R. 51 WEATHER cloudy

SEC. 2 TEMP. 35°

DESCRIPTION Play Two. LEFT CENTER LINE RIGHT JOB NO.

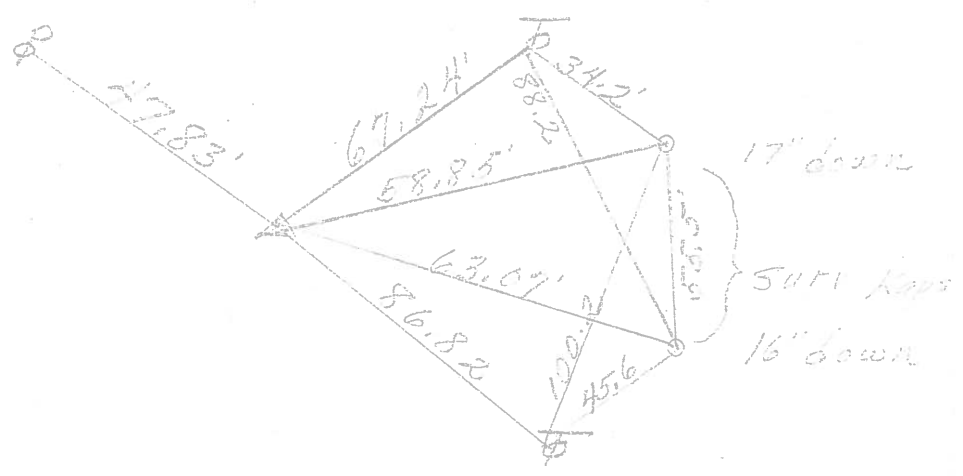
P.I.
232+20.13
small P.B. sph.
 $\Delta = 0^{\circ} 30' RT.$

19.

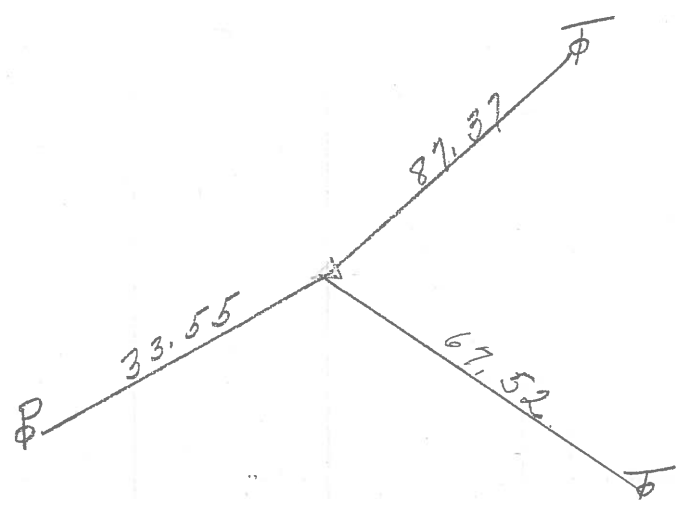


P.I.
224+69.80
small P.B. sph.
 $\Delta = 0^{\circ} 52' RT.$

18



P.I.
243+69.95
 $\Delta = 3^{\circ} 51' RT.$
F.G. P.K. Nail
1/4" down
20



PERSONNEL	TITLE	PERSONNEL	TITLE	COUNTY	DATE	WEATHER	TEMP.
Schneider		Potts		Ottawa	7-1-68	Fair	90°
Mosser				S. R. 51			
Barbour				SEC. Wood Co. Line - East			
Redding							

DESCRIPTION Ties for Control Points JOB NO. _____

