

O.D.O.T. DISTRICT 2 SURVEY OFFICE (USE ONLY)

PERSONNEL _____ REFERENCE NO. 20 SHEET 16 OF 18
 NOTES BALBAUGH DATE 4/16/20 ROUTE SR 51
 H.C. LEU WEATHER WINDY COUNTY OTTAWA
 R.C. BALBAUGH TEMP. 40° TOWNSHIP CLAY
 SECTION 2
 DWG BY NIESE PID 94324 T 6 N R 13 E

TYPE MONUMENT D.N.F. P.K.NAIL

~~ON SURFACE~~ - BELOW -

OFFSET ϕ PAVEMENT 4.0' LT : ~~RT~~

- TO - EDGE PAVEMENT

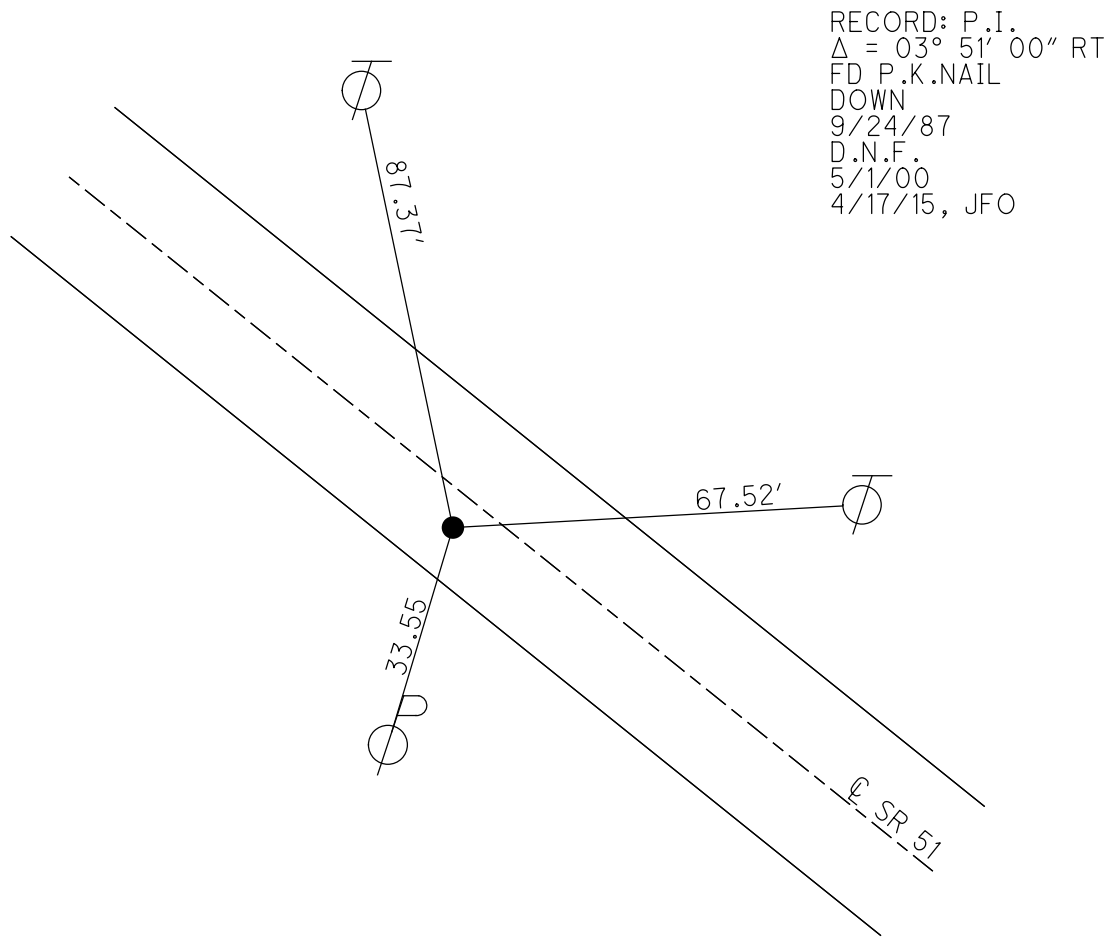
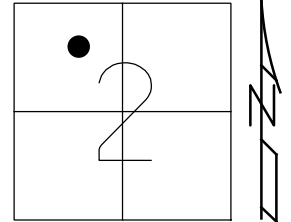
STATION: -

HORIZ.DATUM: NAD83 2011

GEOID: NAVD88 2012A

GRID: NORTHING: -

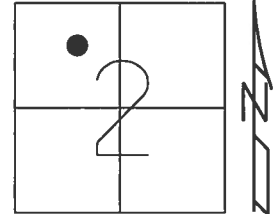
EASTING: -



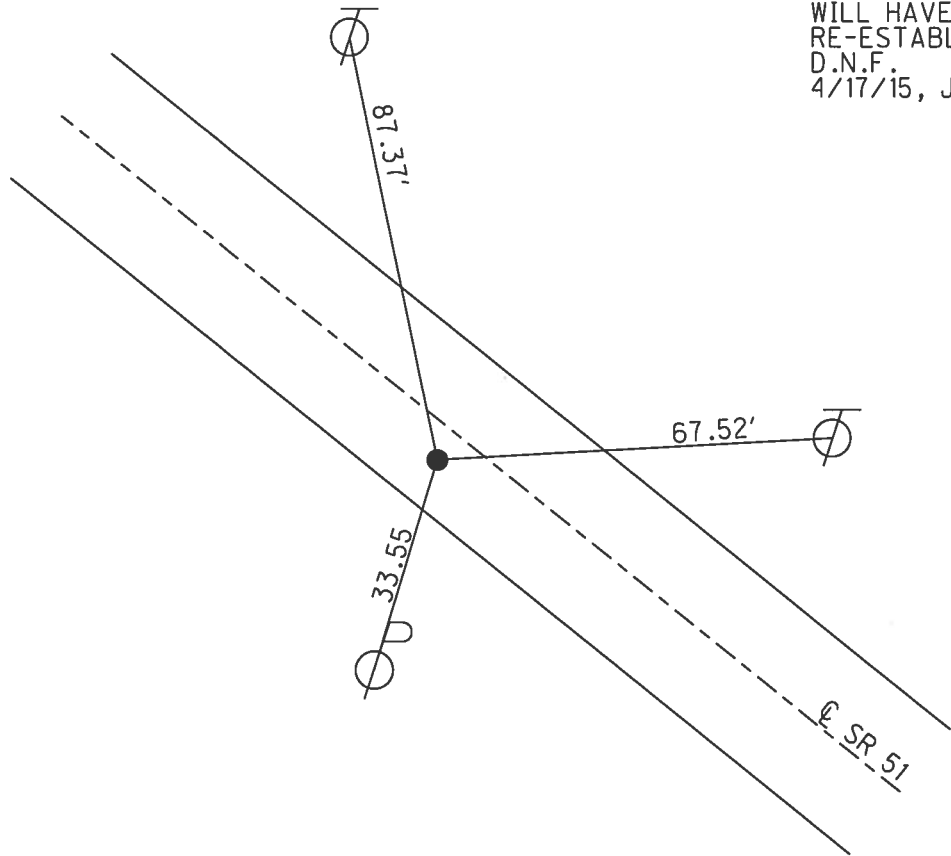
O.D.O.T. DISTRICT 2 SURVEY OFFICE (USE ONLY)

PERSONNEL _____ REFERENCE NO. 20 SHEET 14 OF 16
NOTES CRONIN DATE 9/24/87 ROUTE SR 51
H.C. RIPPLE WEATHER OVERCAST COUNTY OTTAWA
R.C. BARBOUR TEMP. 66° TOWNSHIP CLAY
GEYMAN SECTION 2
T 6 N R 13 E

TYPE MONUMENT P.K.NAIL
~~ON SURFACE~~ - BELOW BELOW SURFACE
LEFT - ☉ PAV'T - ~~RIGHT~~ 4'
- TO - EDGE PAVEMENT
S.L.M. REC. 243+69.95, 243+66.67 ±
Grid: Northing: - _____ Easting: - _____



RECORD: P.I.
 $\Delta = 03^\circ 51' \text{ RT}$
FD P.K.NAIL
BELOW SURFACE
WILL HAVE TO BE
RE-ESTABLISHED
D.N.F.
4/17/15, JFO



O.D.O.T. DISTRICT 2 SURVEY OFFICE

PERSONNEL

REFERENCE NO. 20

SHEET ¹⁴~~28~~ OF 17

NOTES Cronin

H.C. Ripple

R.C. Barbour

Coyne

DATE 9/24/87

WEATHER overcast

TEMP. 66°

ROUTE 51

COUNTY Ottawa

TOWNSHIP Clay

SECTION 2

T 6 N R 13 E

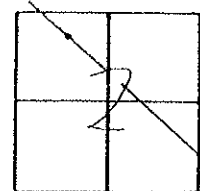
TYPE MONUMENT P.K.

ON SURFACE - BELOW below surface

LEFT - € PAV'T. - RIGHT A.S. & Pav't

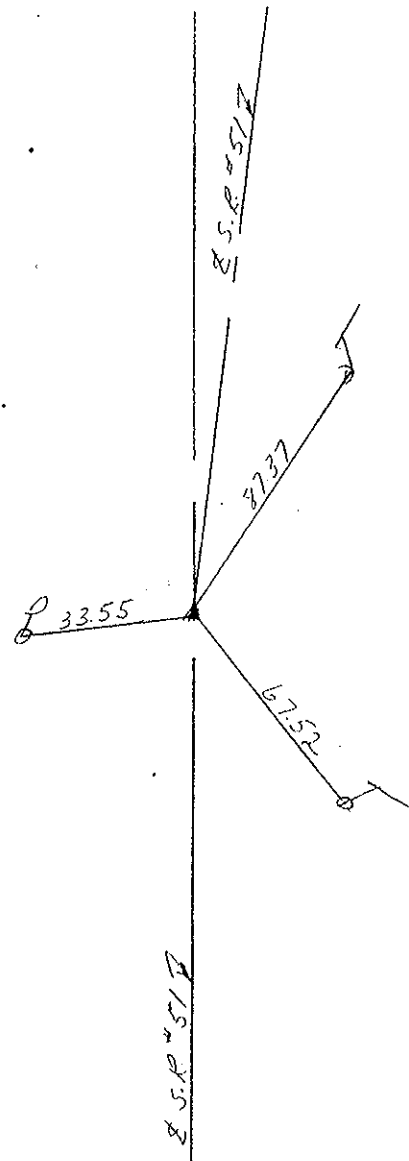
TO EDGE PAVEMENT

S.L.M. 243+69.95



DNE
S-1-00

P.I.
A = 03° 51' 00" Rt.
P.K. below surface
will have to be re-established



PERSONNEL TITLE PERSONNEL TITLE

COUNTY Ottawa DATE 1-11-72

S. R. 51 WEATHER cloudy

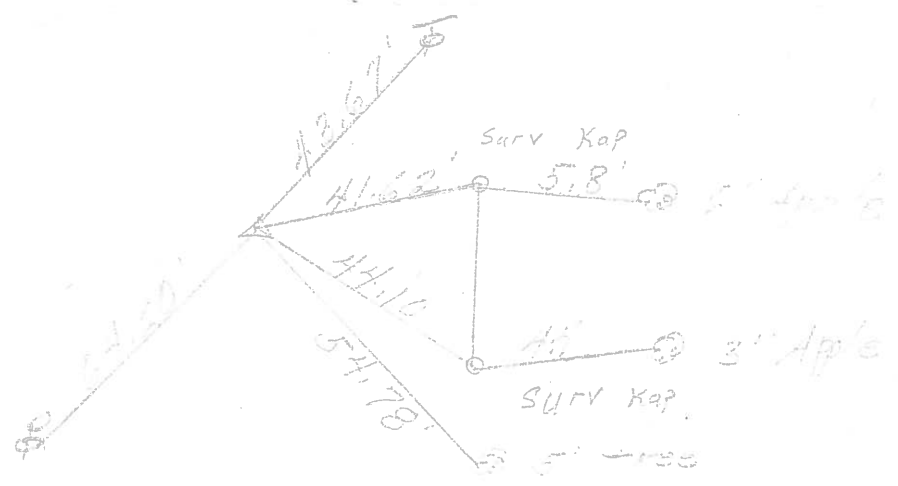
SEC. 2 TEMP. 35°

DESCRIPTION Clay Twp. JOB NO. _____

LEFT CENTER LINE RIGHT

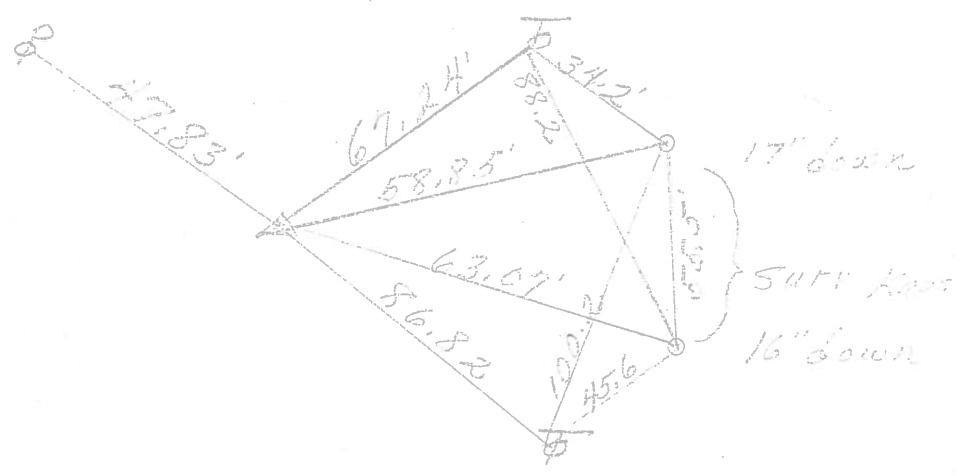
P.I.
232+20.13
Small P.P. Nail
 $\Delta = 0^{\circ} 30' RT.$

19



P.I.
224+69.80
Small P.P. Nail
 $\Delta = 0^{\circ} 52' RT.$

18



P.I.
243+69.95
 $\Delta = 3^{\circ} 51' RT.$
F.G. P.K. Nail
1/4" down
18 20.

