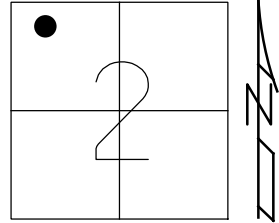


O.D.O.T. DISTRICT 2 SURVEY OFFICE (USE ONLY)

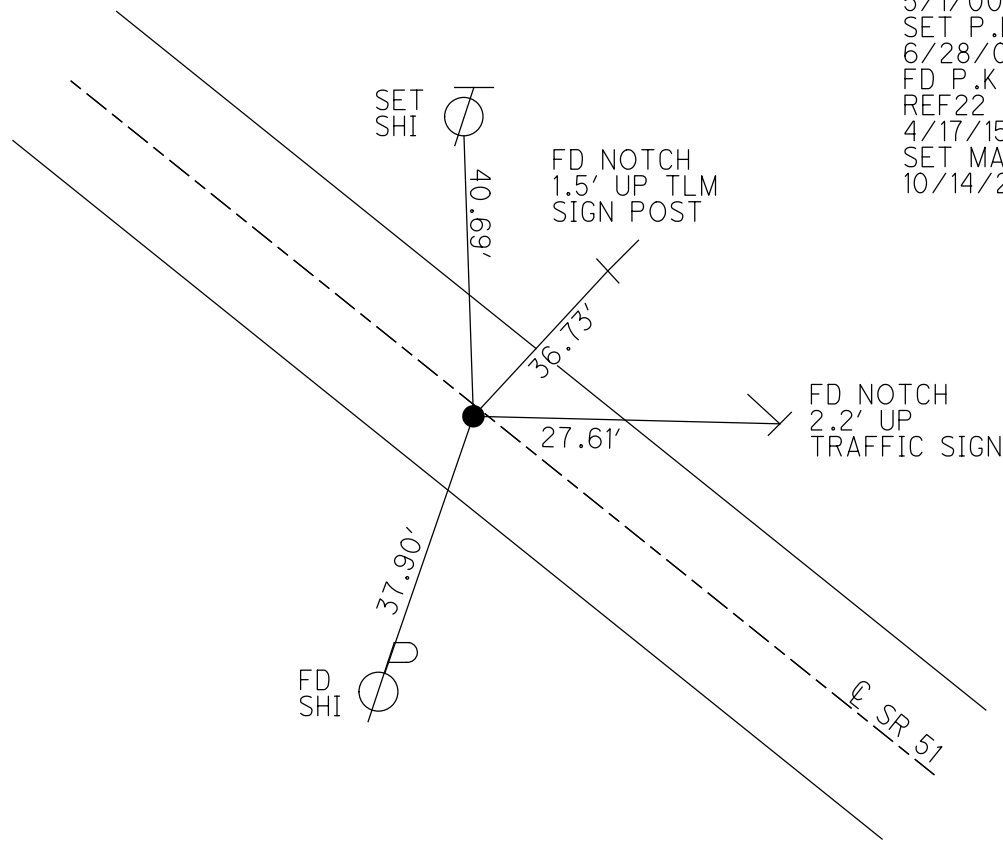
PERSONNEL _____ REFERENCE NO. 22 SHEET 18 OF 18
 NOTES RHOADES DATE 10/14/20 ROUTE SR 51
 H.C. AUBLE WEATHER CLOUDY COUNTY OTTAWA
 R.C. O'DONNELL TEMP. 45° TOWNSHIP CLAY
 SECTION 2
 DWG BY NIESE PID 94324 T 6 N R 13 E

TYPE MONUMENT MAG/WASHER
 ON SURFACE - BELOW ON
 OFFSET \odot PAVEMENT 1.1' LT : RT
11.7' TO LT EDGE PAVEMENT
 STATION: 250+54.94

HORZ.DATUM: NAD83 2011 GEOID: NAVD88 2012A
 GRID: NORTHING: 674180.664 EASTING: 1739993.782



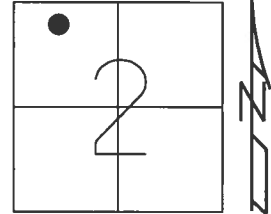
RECORD: P.I.
 $\Delta = 01^{\circ} 52' 00''$ RT
 FD P.K./WASHER
 ATOP SM.R.R.SPIKE
 FD P.K./WASHER
 5/1/00, MB
 SET P.K./WASHER
 6/28/00, SAH
 FD P.K./WASHER
 REF22
 4/17/15, JFO
 SET MAG/WASHER
 10/14/20, DSA



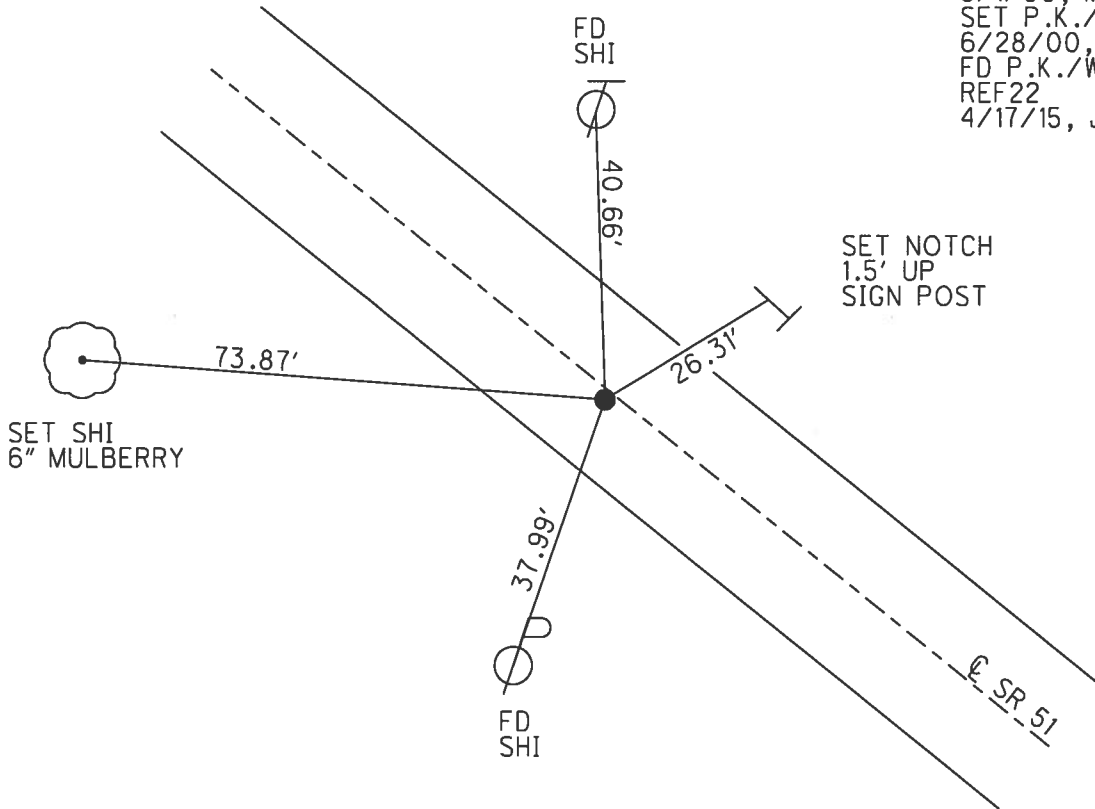
O.D.O.T. DISTRICT 2 SURVEY OFFICE (USE ONLY)

PERSONNEL _____ REFERENCE NO. 22 SHEET 16 OF 16
 NOTES BARNHISEL DATE 5/1/00 ROUTE SR 51
 H.C. CANTERBURY WEATHER CLOUDY COUNTY OTTAWA
 R.C. MOSE TEMP. 55° TOWNSHIP CLAY
HOMAN SECTION 2
 T 6 N R 13 E

TYPE MONUMENT P.K./WASHER
~~ON SURFACE~~ - BELOW 1 1/2"
 LEFT - ☉ PAV'T - ~~RIGHT~~ 1.1'
11.7' TO LT EDGE PAVEMENT
 S.L.M. 250+54.94
 Grid: Northing: 674180.638 Easting: 1739993.823



RECORD: P.I.
 $\Delta = 01^\circ$ RT
 P.K./WASHER ATOP
 SM.R.R.SPIKE
 FD P.K./WASHER
 5/1/00, MB
 SET P.K./WASHER
 6/28/00, SAH
 FD P.K./WASHER
 REF22
 4/17/15, JFO



O.D.O.T. DISTRICT 2 SURVEY OFFICE

PERSONNEL

REFERENCE NO. 22

SHEET 16 OF 17

NOTES Barnhisel

H.C. Canterbury

R.C. Moser

Drawn By - Homan

DATE 5-1-00

WEATHER Cloudy

TEMP. 55°

ROUTE 51

COUNTY Ottawa

TOWNSHIP Clay

SECTION 2

T 6 N R 13 E

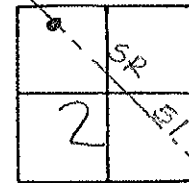
TYPE MONUMENT PK & Washer

ON-SURFACE - BELOW 1 1/2"

LEFT- & PAV'T. - RIGHT 1:1

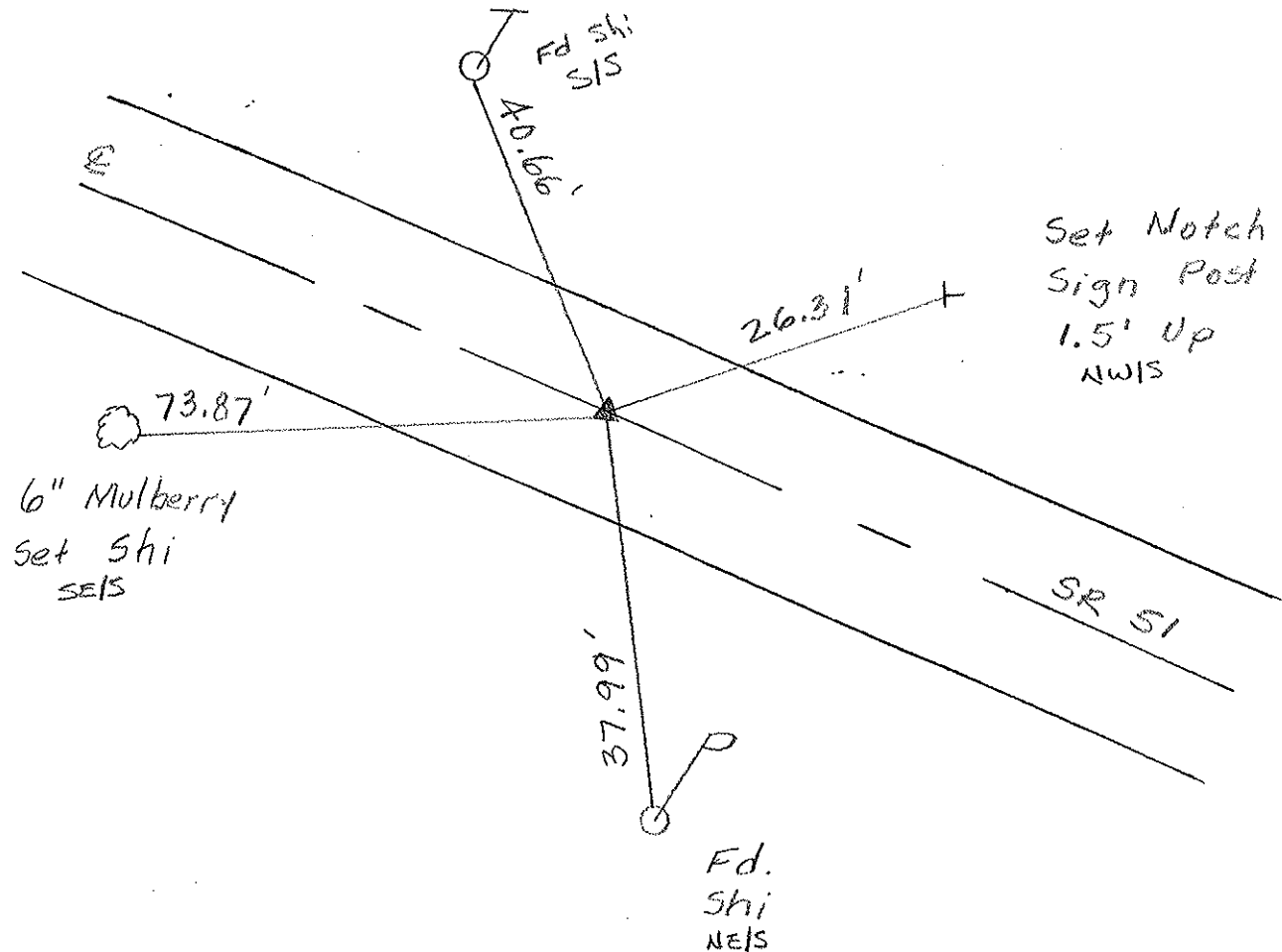
11.7 TO Lt EDGE PAVEMENT

S.L.M. 251+47



PI
 $\Delta = 01^{\circ} 52' 00''$ Rt
 PK & Washer over small
 RR. Spike below surface

Set PK/washer
 6-28-00 SAH



Set Notch
 Sign Post
 1.5' Up
 NWIS

6" Mulberry
 set Shi
 S&S

40.66'
 37.99'
 Fd. Shi
 S&S

O.D.O.T. DISTRICT 2 SURVEY OFFICE

PERSONNEL

REFERENCE NO. 22

SHEET 21 OF

NOTES Cronin

H.C. Ripple

R.G. Barbour

Geyman

DATE 9/24/87

WEATHER overcast

TEMP. 66°

ROUTE 51

COUNTY Ottawa

TOWNSHIP Clay

SECTION 21

T 6 N R 13 E

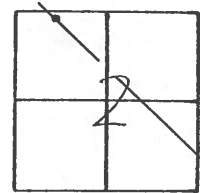
TYPE MONUMENT P.K. & washer

ON SURFACE - BELOW on surface

LEFT- & PAV'T. - RIGHT & Pav't.

 TO EDGE PAVEMENT

S.L.M. 250+70.10



P.I.
 $\Delta = 01^{\circ}52'00''$ Rt.
P.K. at top P.K. below
surface

