

O.D.O.T. DISTRICT 2 SURVEY OFFICE (USE ONLY)

PERSONNEL

REFERENCE NO. 23

SHEET 1 OF 21

NOTES BALBAUGH

DATE 4/16/20

ROUTE SR 51

H.C. LEU

WEATHER WINDY

COUNTY OTTAWA

R.C. BALBAUGH

TEMP. 40°

TOWNSHIP CLAY

SECTION 2

DWG BY NIESE PID 94324

T 6 N R 13 E

TYPE MONUMENT MAG/WASHER

ON SURFACE - ~~BELOW~~ ON

OFFSET Q PAVEMENT 0.5' LT : ~~RT~~

16.0' TO LT EDGE PAVEMENT

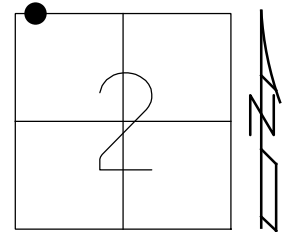
STATION: 258+54.18

HORZ.DATUM: NAD83 2011

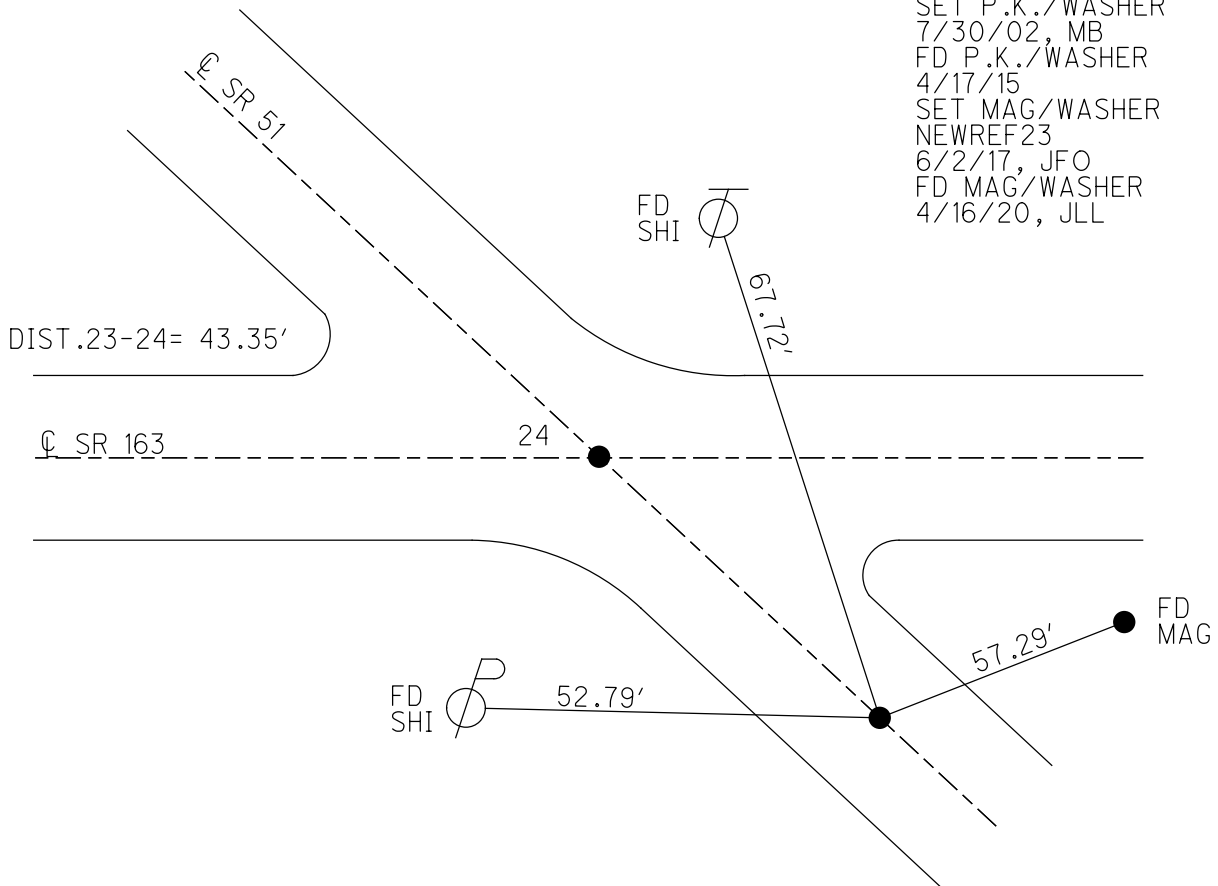
GEOID: NAVD88 2012A

GRID: NORTHING: 674745.891

EASTING: 1739428.748



RECORD: P.I.
 $\Delta = 00^{\circ} 57' 00''$ LT
 FD P.K./WASHER
 FD SM.R.R.SPIKE
 FD P.K./WASHER
 5/1/00, MB
 SET P.K./WASHER
 7/30/02, MB
 FD P.K./WASHER
 4/17/15
 SET MAG/WASHER
 NEWREF23
 6/2/17, JFO
 FD MAG/WASHER
 4/16/20, JLL

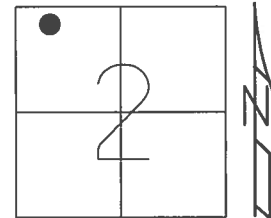


O.D.O.T. DISTRICT 2 SURVEY OFFICE (USE ONLY)

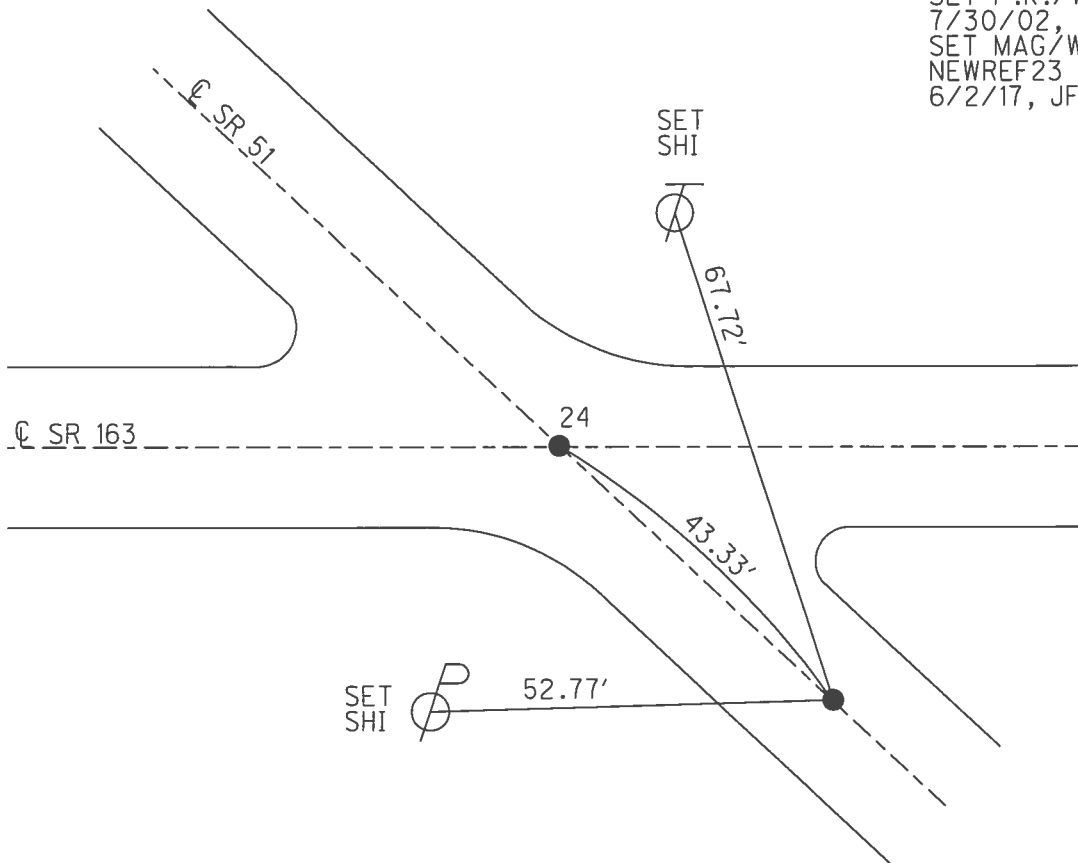
PERSONNEL	REFERENCE NO.	<u>23</u>	SHEET	<u>1</u>	OF	<u>21</u>
NOTES	<u>RHOADES</u>	DATE	<u>6/2/17</u>	ROUTE	<u>SR 51</u>	
H.C.	<u>O'DONNELL</u>	WEATHER	<u>SUNNY</u>	COUNTY	<u>OTTAWA</u>	
R.C.	<u>POORE</u>	TEMP.	<u>62°</u>	TOWNSHIP	<u>CLAY</u>	
				SECTION	<u>2</u>	
				T	<u>6</u>	R
					<u>13</u>	E

TYPE MONUMENT MAG/WASHER
 ON SURFACE - ~~BELOW~~ ON
 LEFT - ☉ PAV'T - ~~RIGHT~~ 0.5'
16.0' TO LT EDGE PAVEMENT
 S.L.M. 259+41

Grid: Northing: 674745.871 Easting: 1739428.749



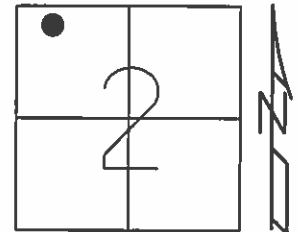
RECORD: P.I.
 $\Delta = 00^{\circ}57' LT$
 P.K./WASHER OVER
 SM.R.R.SPIKE
 BELOW SURFACE
 SET P.K./WASHER
 7/30/02, MB
 SET MAG/WASHER
 NEWREF23
 6/2/17, JFO



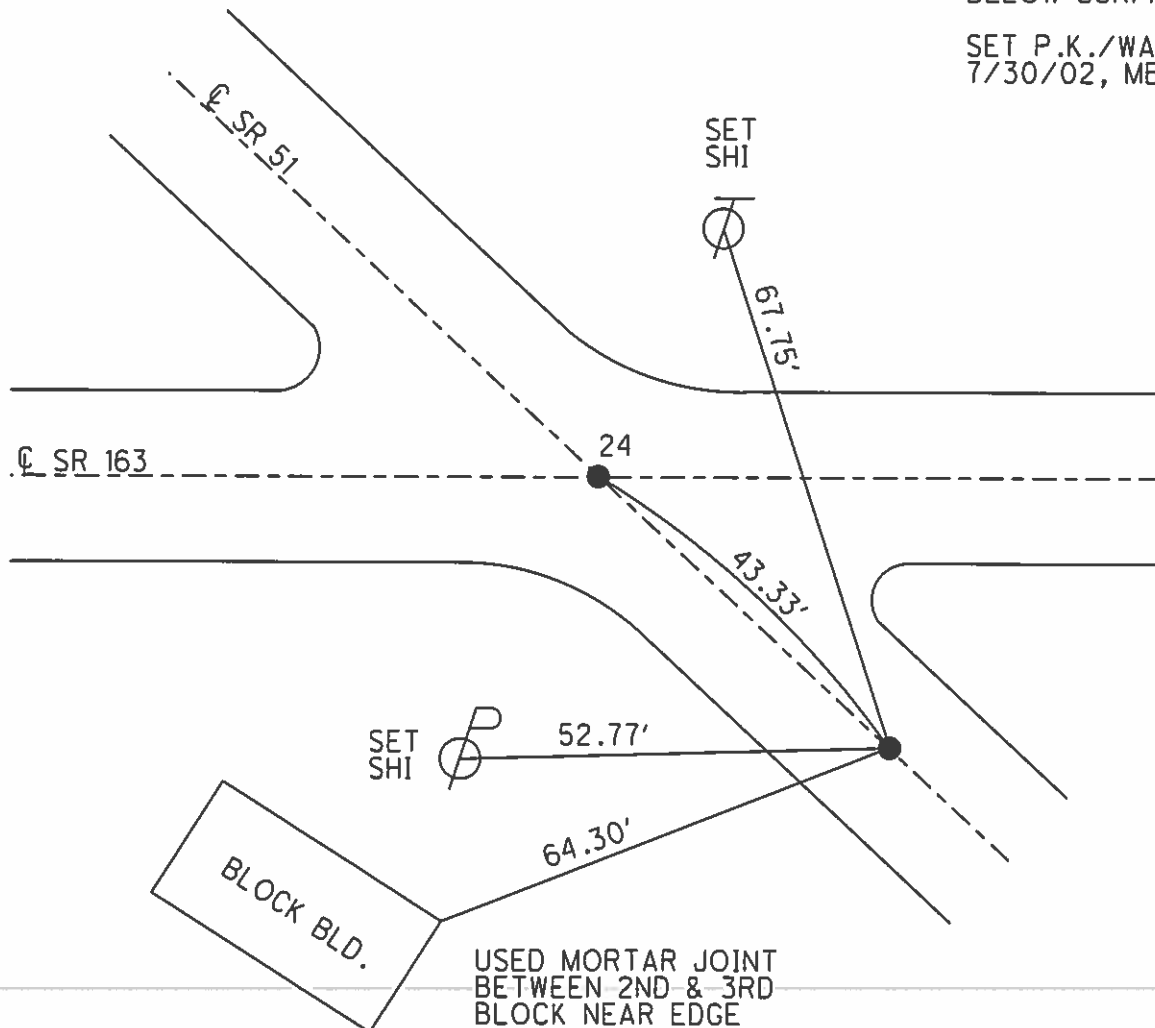
O.D.O.T. DISTRICT 2 SURVEY OFFICE (USE ONLY)

PERSONNEL	REFERENCE NO.	<u>23</u>	SHEET	<u>1</u>	OF	<u>21</u>
NOTES	<u>BARNHISEL</u>	DATE	<u>5/1/00</u>	ROUTE	<u>SR 51</u>	
H.C.	<u>CANTERBURY</u>	WEATHER	<u>CLOUDY</u>	COUNTY	<u>OTTAWA</u>	
R.C.	<u>MOSER</u>	TEMP.	<u>55°</u>	TOWNSHIP	<u>CLAY</u>	
	<u>HOMAN</u>			SECTION	<u>2</u>	
				T	<u>6</u>	R
				E	<u>13</u>	

TYPE MONUMENT P.K./WASHER
 ON SURFACE - ~~BELOW~~ ON
 LEFT - ☉ PAV'T - ~~RIGHT~~ 0.5'
16.0' TO LT EDGE PAVEMENT
 S.L.M. 259+41
 Grid: Northing: - Easting: -



RECORD: P.J.
 $\Delta = 00^\circ 57' \text{ LT}$
 P.K./WASHER OVER
 SM.R.R.SPIKE
 BELOW SURFACE
 SET P.K./WASHER
 7/30/02, MB



O.D.O.T. DISTRICT 2 SURVEY OFFICE

PERSONNEL

REFERENCE NO. 23

SHEET 17 OF 17

NOTES Barnhisel

H.C. Canterbury

R.C. Moser

DATE 5-1-00

WEATHER Cloudy

TEMP. 55°

ROUTE 51

COUNTY Ottawa

TOWNSHIP Clay

SECTION 2

T6 N R 13 E

Drawn By - Homan

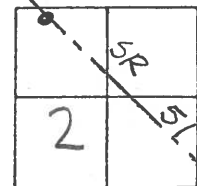
TYPE MONUMENT PK & Washer

ON SURFACE - BELOW Yes

LEFT - & PAU'T. - RIGHT 0.5

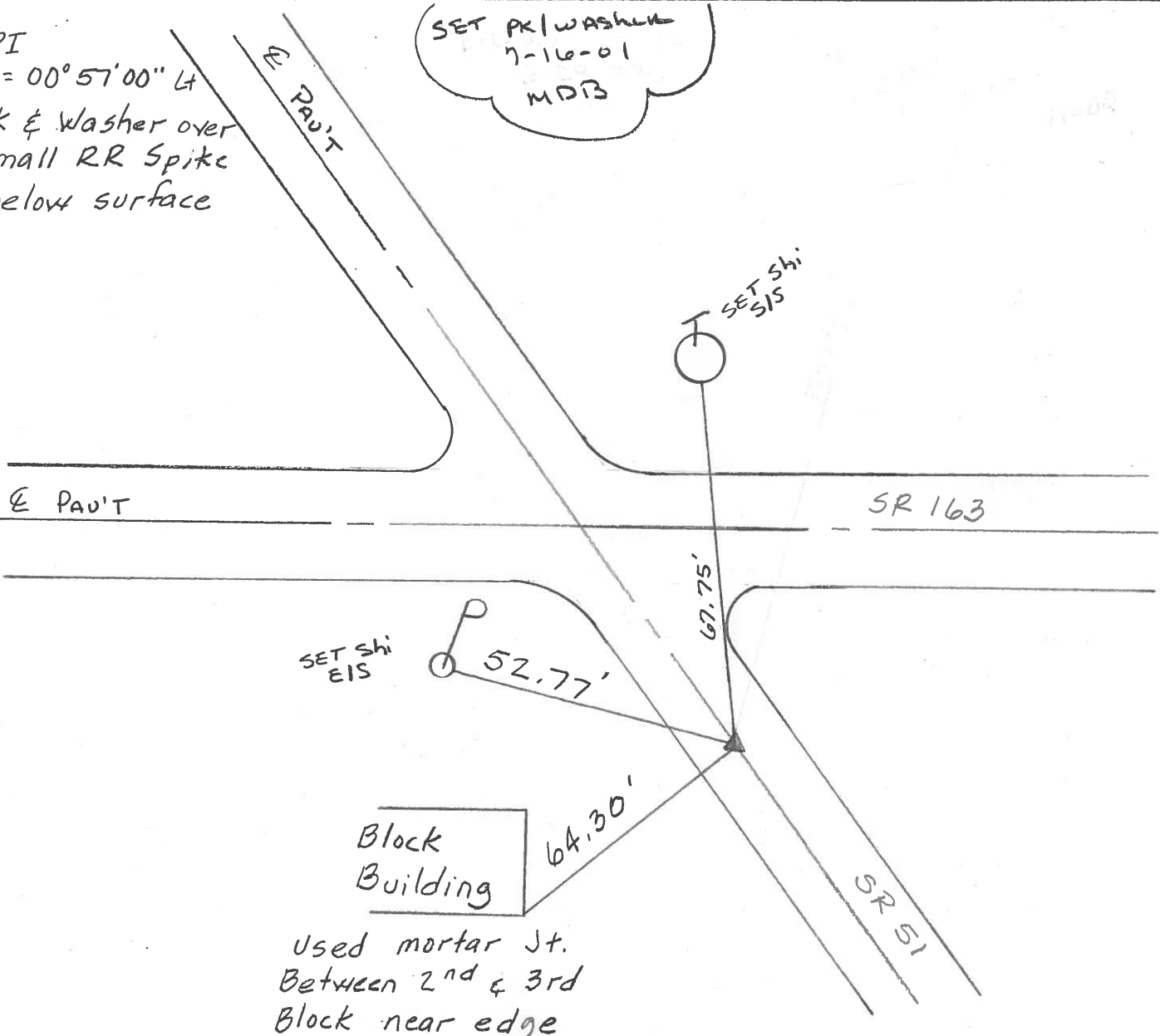
16.0 TO Lt EDGE PAVEMENT

S.L.M. 259+41



PI
 $\Delta = 00^{\circ} 57' 00''$ Lt
 PK & Washer over
 small RR Spike
 below surface

SET PK/WASHER
 7-16-01
 MDRB



Used mortar Jt.
 Between 2nd & 3rd
 Block near edge

O.D.O.T. DISTRICT 2 SURVEY OFFICE

PERSONNEL

REFERENCE NO. 23

SHEET 22 OF

NOTES Cronin

H.C. Ripple

R.C. Barbour

Geyman

DATE 9/24/87

WEATHER overcast

TEMP. 66°

ROUTE 51

COUNTY Ottawa

TOWNSHIP Clay

SECTION 2

T6 NR 13 E

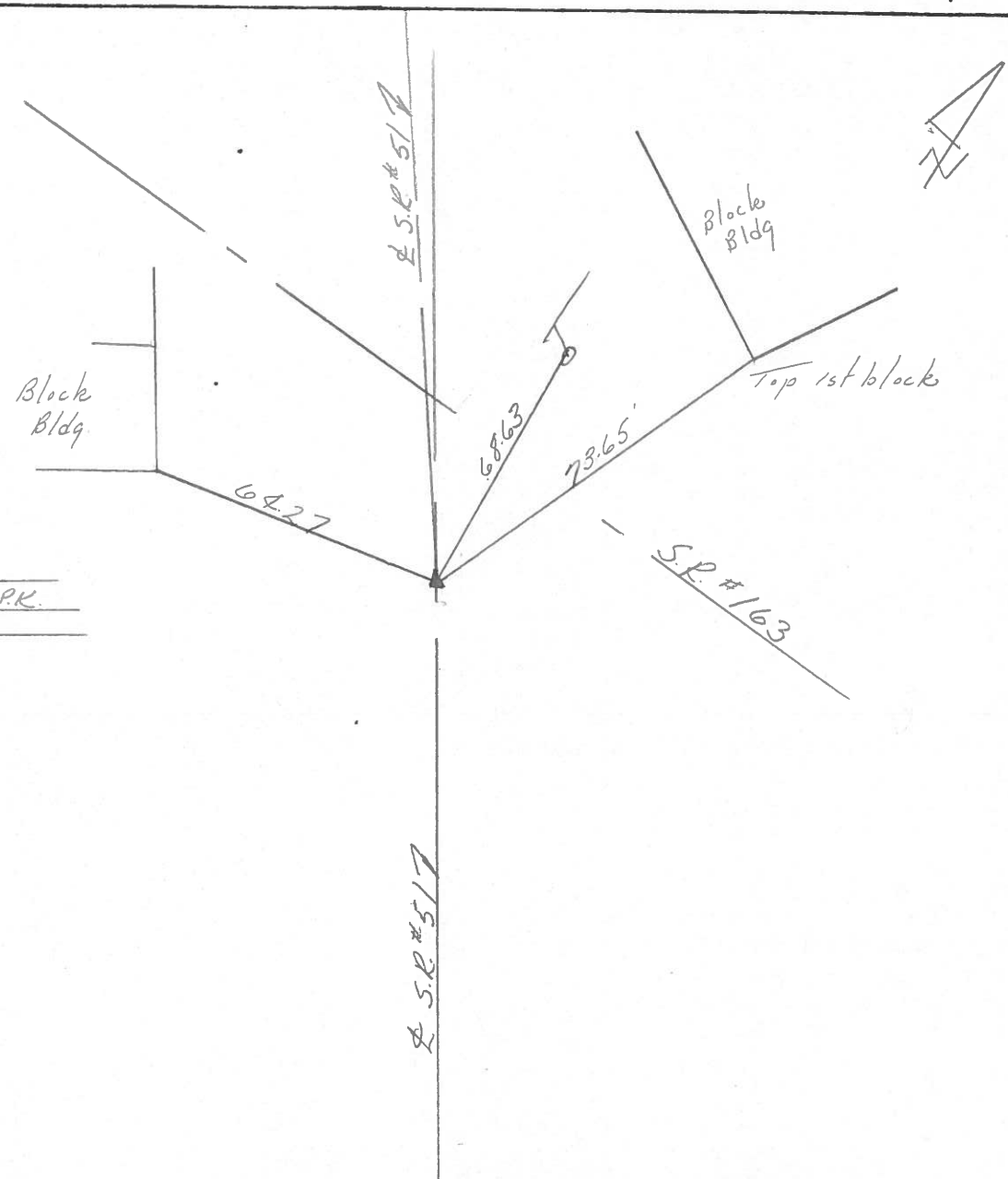
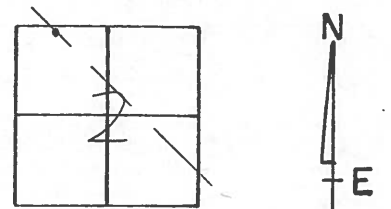
TYPE MONUMENT P.K. & washer

ON SURFACE - BELOW on surface

LEFT - & PAV'T. - RIGHT & Pav't.

___ TO ___ EDGE PAVEMENT

S.L.M. 258+70.20



P.I.
 $\Delta = 00^{\circ}57'00''$ Lt.
 P.K. & washer atop P.K.
 below surface

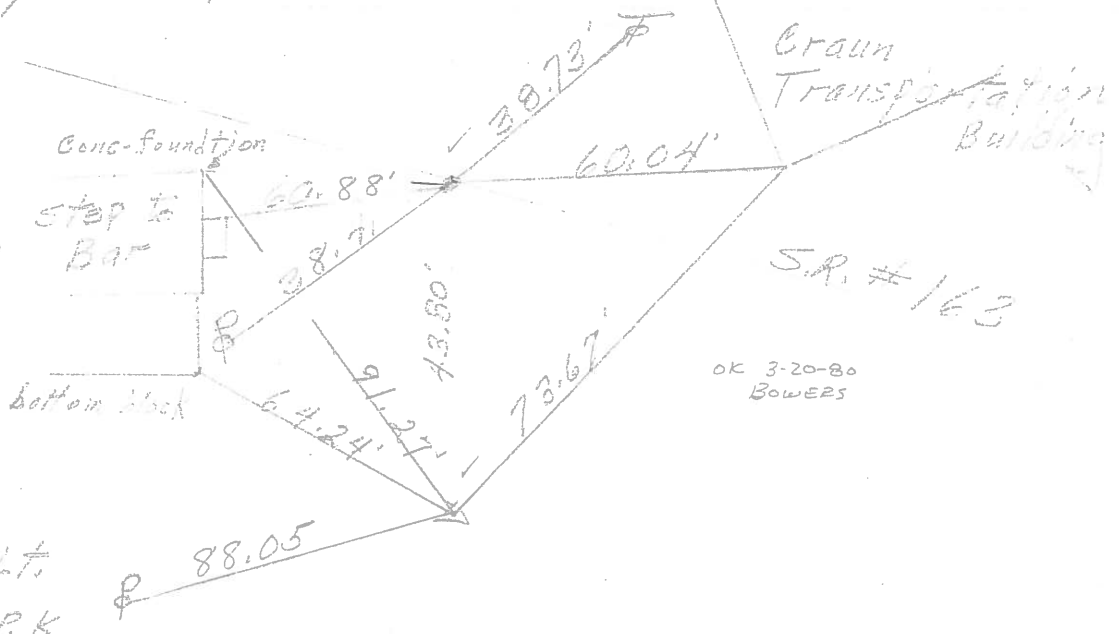
PERSONNEL	TITLE	PERSONNEL	TITLE

COUNTY Ottawa DATE 1-11-72
 S. R. 51 WEATHER cloudy
 SEC. 2 TEMP. 40°

DESCRIPTION Clay Twp. LEFT CENTER LINE RIGHT JOB NO.

P.O.T.
 257+13.9
 Small RR spike

24

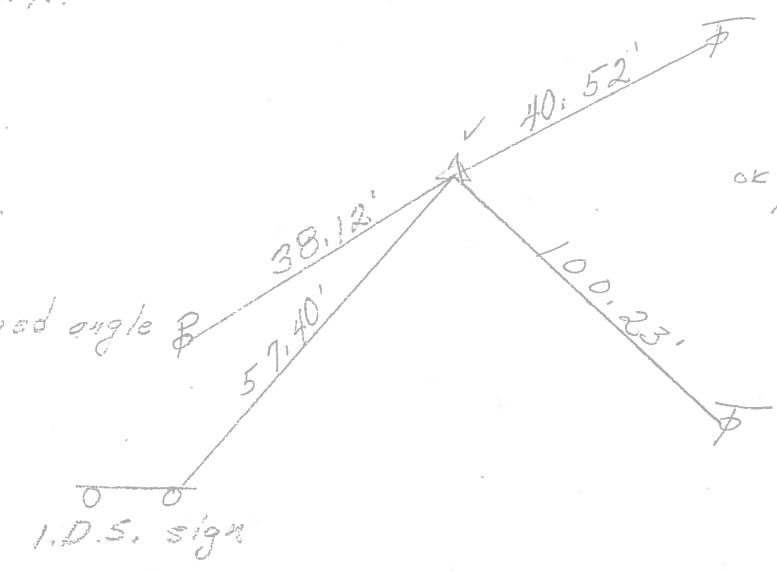


S.R. # 163

OK 3-20-80
 BOWERS

P.I.
 258+70.2
 Δ = 0° 57' Lt.
 Good ties set P.K.
 set P.K. Nail

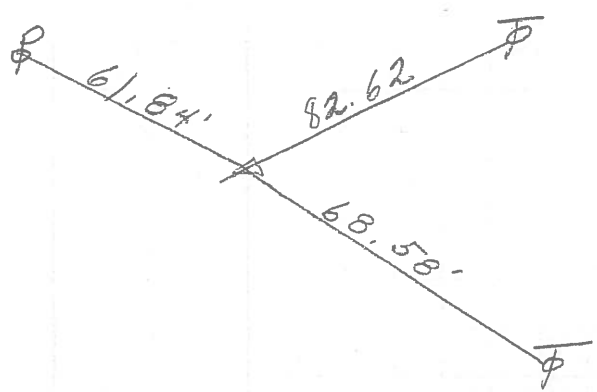
23



OK 3-20-80
 BOWERS

P.I.
 250+70.1
 Δ = 1° 52' Rt.
 set P.K. Nail
 Measured & turned angle

22



P.I.
 247+69.90
 Δ = 2° 30' Rt.
 Fl. Roofing Nail
 1/4" down

21