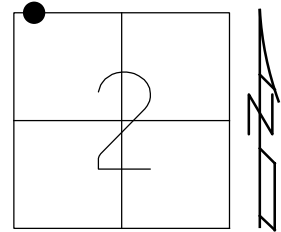


O.D.O.T. DISTRICT 2 SURVEY OFFICE (USE ONLY)

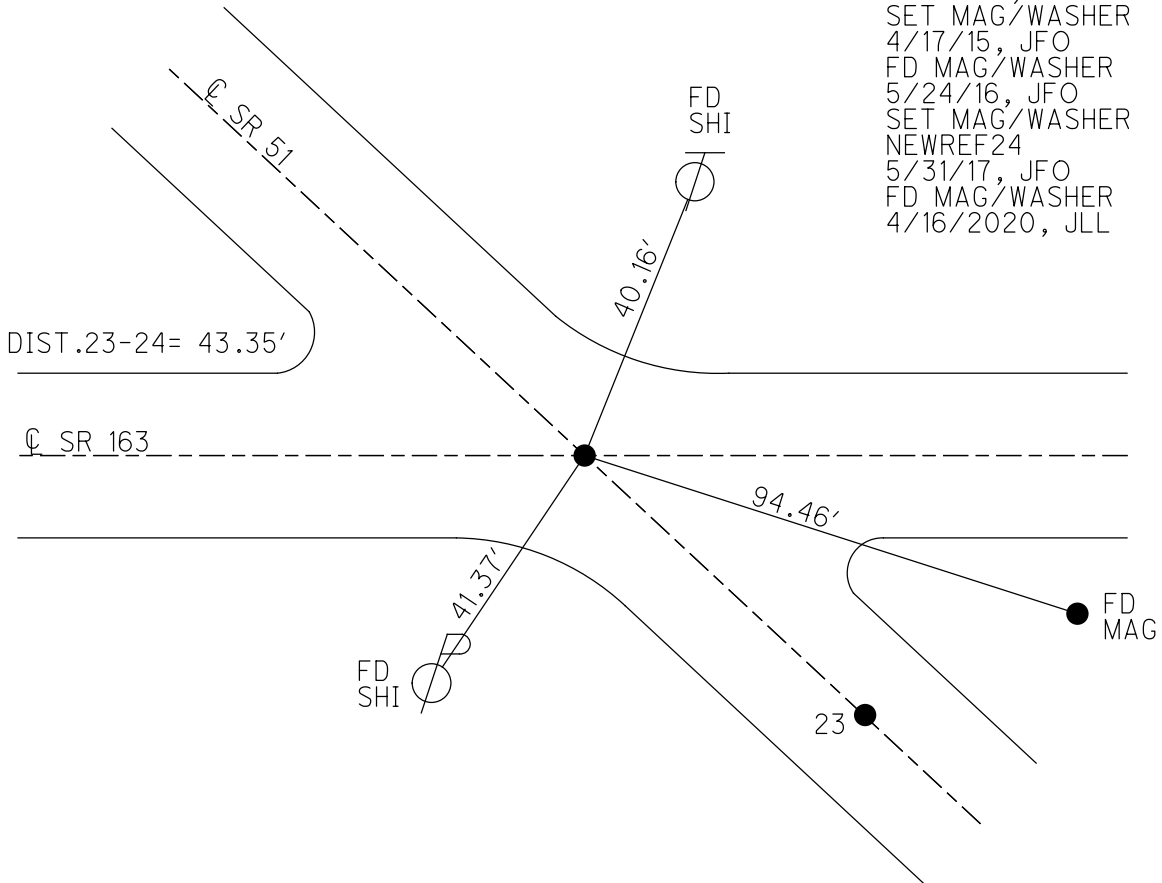
PERSONNEL \_\_\_\_\_ REFERENCE NO. 24 SHEET 2 OF 21  
 NOTES BALBAUGH DATE 4/16/20 ROUTE SR 51  
 H.C. LEU WEATHER WINDY COUNTY OTTAWA  
 R.C. BALBAUGH TEMP. 40° TOWNSHIP CLAY  
 DWG BY NIESE PID 94324 SECTION 2  
 T 6 N R 13 E

TYPE MONUMENT MAG/WASHER  
 ON SURFACE - ~~BELOW~~ ON  
 OFFSET Q PAVEMENT ON LT : RT  
- TO - EDGE PAVEMENT  
 STATION: 258+97.49

HORIZ.DATUM: NAD83 2011 GEOID: NAVD88 2012A  
 GRID: NORTHING: 674775.972 EASTING: 1739397.569



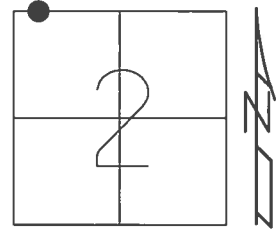
RECORD: P.I.  
 $\Delta = 00^\circ 04' 00''$  RT  
 STA. 297+16.7  
 FD SM.R.R.SPIKE  
 5/14/02, MB  
 SET P.K./WASHER  
 7/29/02, MB  
 SET MAG/WASHER  
 4/17/15, JFO  
 FD MAG/WASHER  
 5/24/16, JFO  
 SET MAG/WASHER  
 NEWREF24  
 5/31/17, JFO  
 FD MAG/WASHER  
 4/16/2020, JLL



O.D.O.T. DISTRICT 2 SURVEY OFFICE (USE ONLY)

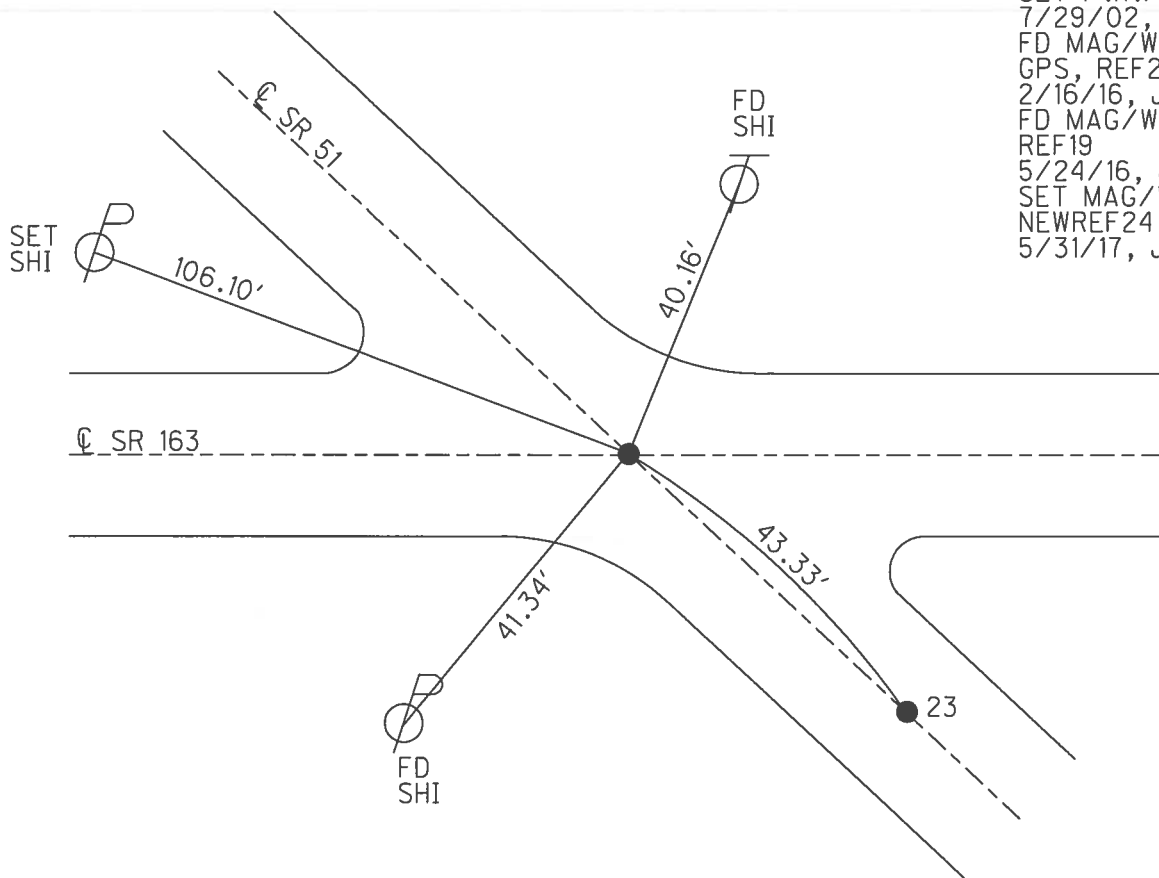
PERSONNEL \_\_\_\_\_ REFERENCE NO. 24 SHEET 2 OF 21  
 NOTES RHOADES DATE 4/5/16 ROUTE SR 51  
 H.C. FARKAS WEATHER CLEAR COUNTY OTTAWA  
 R.C. HOMAN TEMP. 26° TOWNSHIP CLAY  
 \_\_\_\_\_ SECTION 2  
 \_\_\_\_\_ T 6 N R 13 E

TYPE MONUMENT MAG/WASHER  
 ON SURFACE - ~~BELOW~~ ON, ON C WEST  
 LEFT - C PAV'T - RIGHT -  
- TO - EDGE PAVEMENT  
 S.L.M. 259+83



Grid: Northing: 674775.973 Easting: 1739397.544

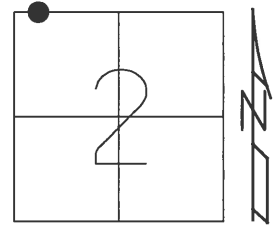
RECORD: P.I.  
 $\Delta = 00^\circ 04' RT$   
 297+16.7  
 FD SM.R.R.SPIKE  
 5/14/02, MB  
 SET P.K./WASHER  
 7/29/02, MB  
 FD MAG/WASHER  
 GPS, REF24  
 2/16/16, JFO  
 FD MAG/WASHER  
 REF19  
 5/24/16, JFO  
 SET MAG/WASHER  
 NEWREF24  
 5/31/17, JFO



O.D.O.T. DISTRICT 2 SURVEY OFFICE (USE ONLY)

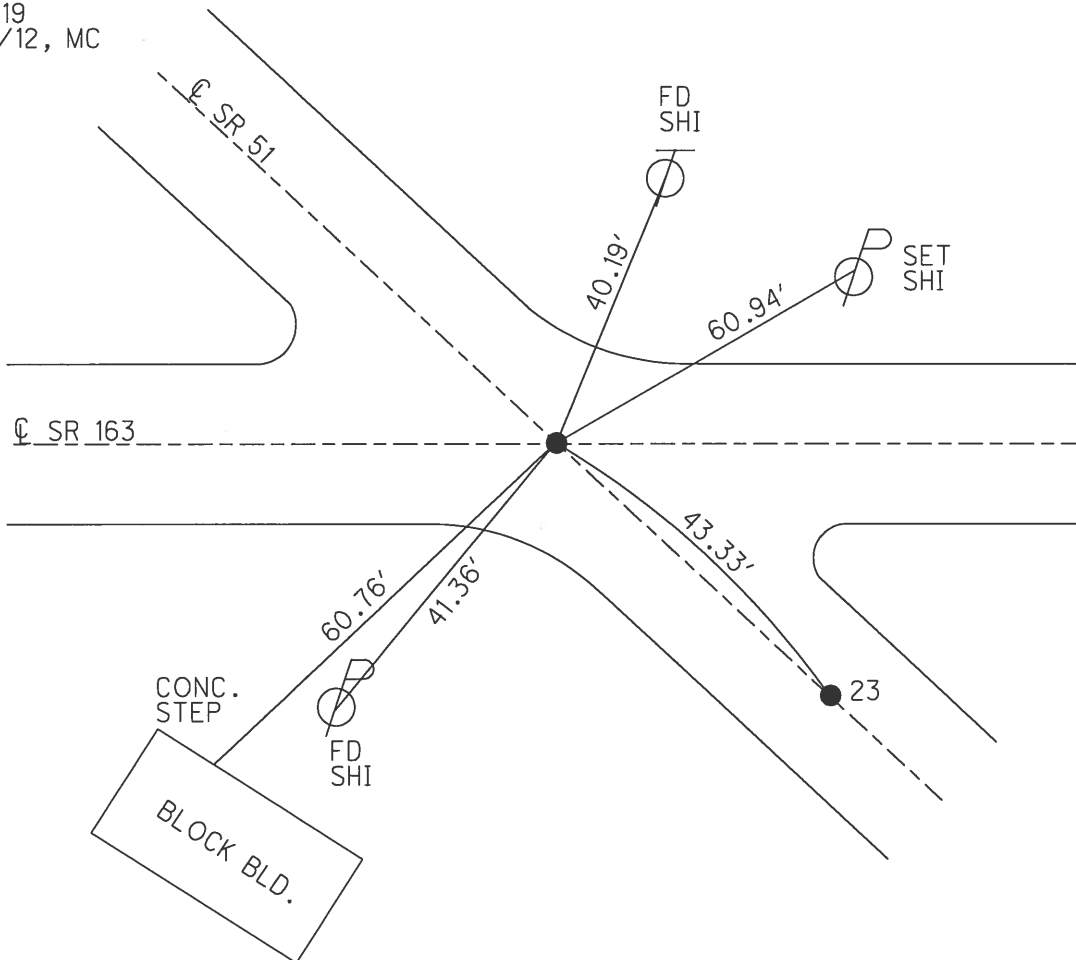
PERSONNEL	REFERENCE NO.	19	SHEET	2	OF	20
NOTES	MOSER	DATE	5/14/02	ROUTE	SR 51	
H.C.	BARNHISEL	WEATHER	PTLY CLOUDY	COUNTY	OTTAWA	
R.C.	LOEHRKE	TEMP.	55°	TOWNSHIP	CLAY	
	HOFFMAN			SECTION	2	
				T	6	N
				R	13	E

TYPE MONUMENT SM.R.R.SPIKE  
 ON SURFACE - ~~BELOW~~ ON, ON ☉ WEST  
 LEFT - ☉ PAV'T - RIGHT -  
- TO - EDGE PAVEMENT  
 S.L.M. 213+84  
 Grid: Northing: 674775.882 Easting: 1739397.310



RECORD:  
 FD SM.R.R.SPIKE  
 5/14/02, KM  
 SET P.K./WASHER  
 7/29/02, MB  
 FD MAG/WASHER  
 REF19  
 1/3/12, MC

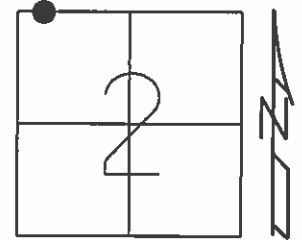
NOTE:  
SR 51-REF 24



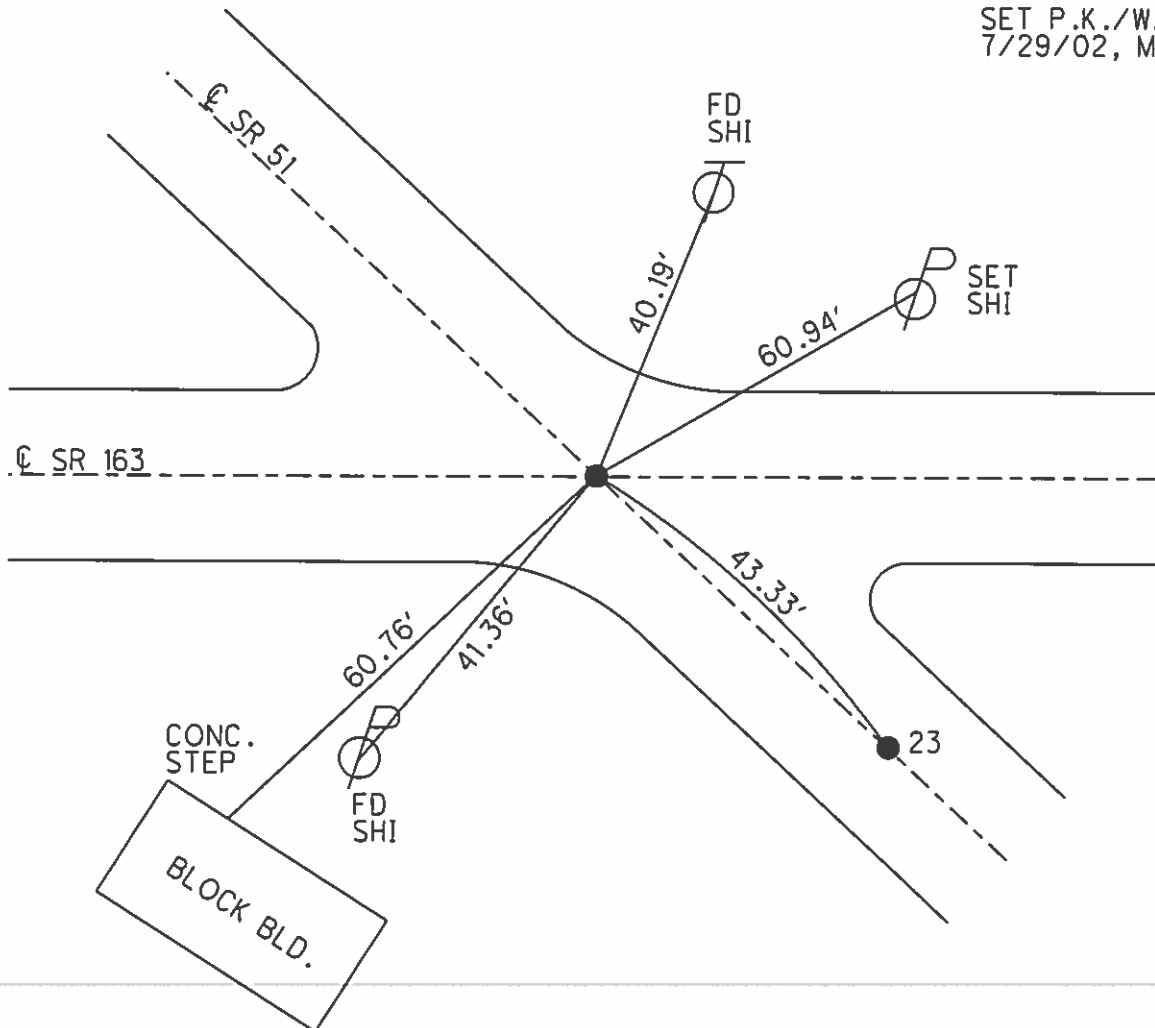
O.D.O.T. DISTRICT 2 SURVEY OFFICE (USE ONLY)

PERSONNEL	REFERENCE NO.	<u>24</u>	SHEET	<u>2</u>	OF	<u>21</u>
NOTES	<u>MOSER</u>	DATE	<u>5/14/02</u>	ROUTE	<u>SR 51</u>	
H.C.	<u>BARNHISEL</u>	WEATHER	<u>PTLY CLOUDY</u>	COUNTY	<u>OTTAWA</u>	
R.C.	<u>LOEHRKE</u>	TEMP.	<u>55°</u>	TOWNSHIP	<u>CLAY</u>	
	<u>HOFFMAN</u>			SECTION	<u>2</u>	
				T	<u>6</u>	R
					<u>N</u>	<u>13</u>
					<u>E</u>	

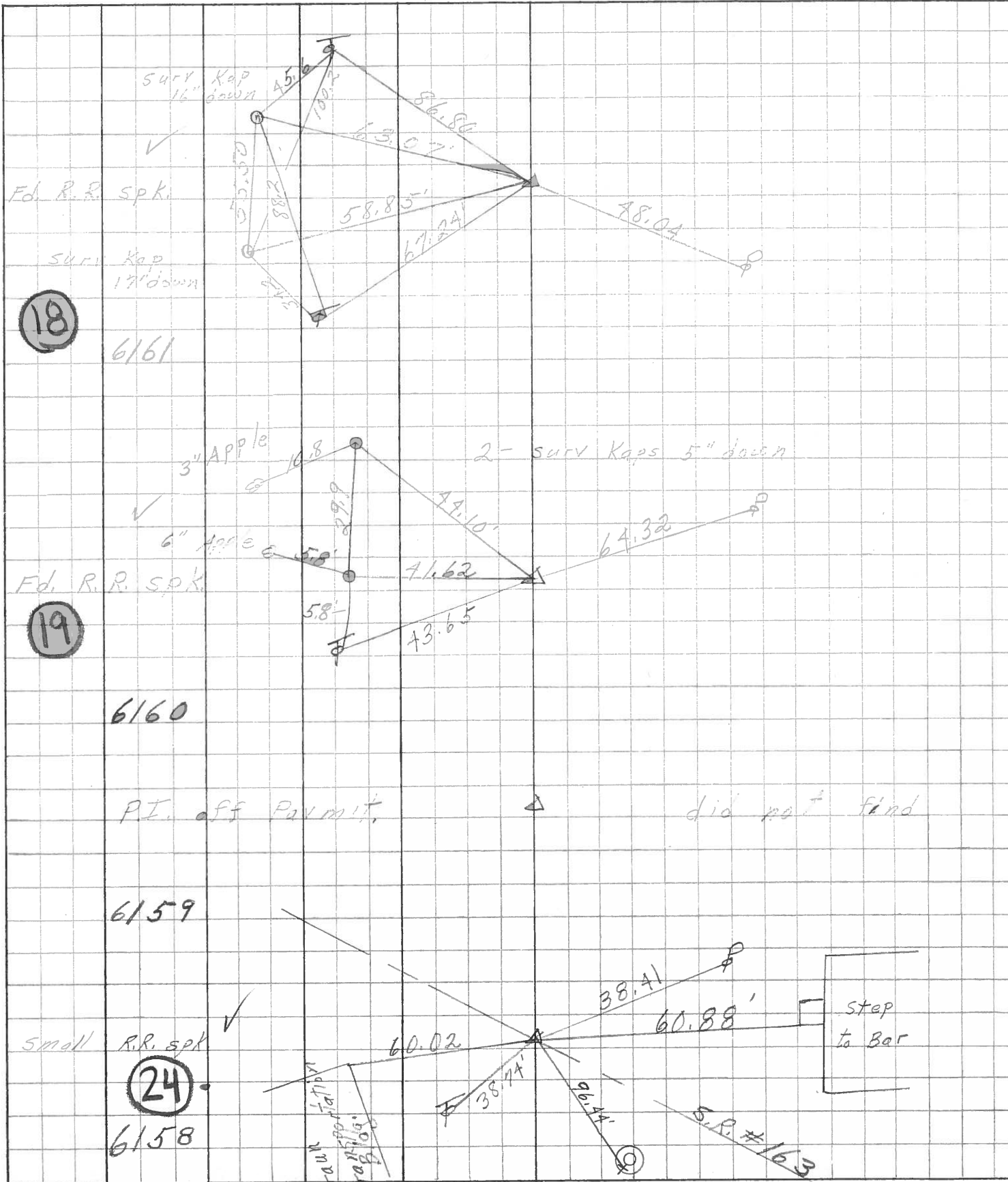
TYPE MONUMENT SM.R.R.SPIKE  
 ON SURFACE - ~~BELOW~~ ON, ON CL WEST  
 LEFT - CL PAV'T - RIGHT -  
- TO - EDGE PAVEMENT  
 S.L.M. 259+83  
 Grid: Northing: - Easting: -



RECORD: P.I.  
 $\Delta = 00^\circ 04' RT$   
 297+16.7  
 SM.R.R.SPIKE  
 SET P.K./WASHER  
 7/29/02, MB



PERSONNEL	TITLE	PERSONNEL	TITLE	COUNTY	DATE
<u>Schneider</u>		<u>Potts</u>		<u>Ottawa</u>	<u>7-1-68</u>
<u>Mosser</u>				S. R. <u>51</u>	WEATHER <u>Fair</u>
<u>Barbour</u>				SEC. <u>Wood Co. Line - East</u>	TEMP. <u>90°</u>
<u>Redding</u>					
DESCRIPTION	<u>Ties for Control Points</u>				JOB NO.



PERSONNEL TITLE PERSONNEL TITLE

COUNTY Ottawa DATE 1-11-72

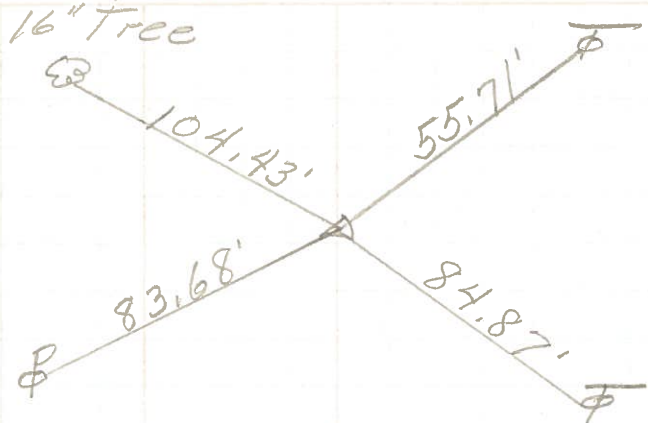
S. R. 51 WEATHER Fair

SEC. 34 & 35 TEMP. 40°

DESCRIPTION Clay Twp. LEFT CENTER LINE RIGHT JOB NO.

P.I.  
297+16.7  
small spk.  
 $\Delta = 0^{\circ} 04' \text{ Rt.}$

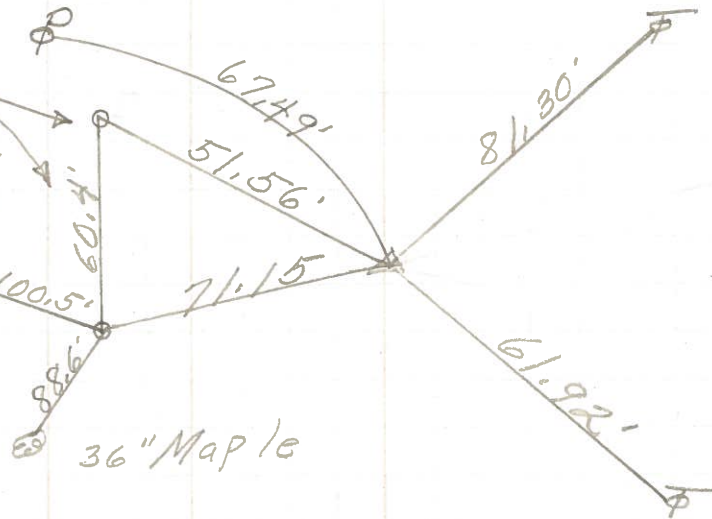
27



2-surr Kaps  
15" down  
Well base

P.I.  
287+55.03  
 $\Delta = 0^{\circ} 11' \text{ Lt.}$   
287+34.43

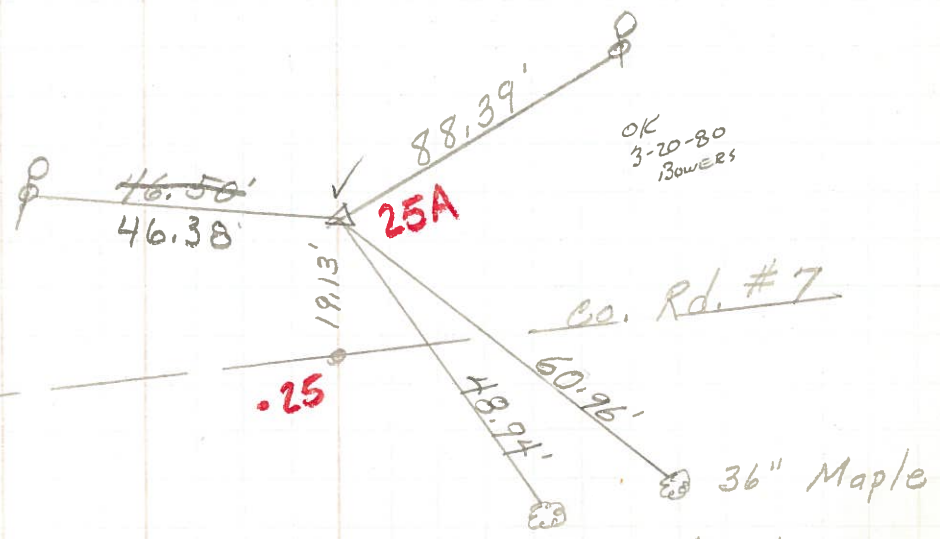
26



P.I.  
269+37.15  
 $\Delta = 0^{\circ} 38' \text{ Lt.}$   
P.K. Nail

P.O.T. 269+18.0  
N. & S.

25



OK  
3-20-80  
BOWERS

Co. Rd. #7