

O.D.O.T. DISTRICT 2 SURVEY OFFICE (USE ONLY)

PERSONNEL

REFERENCE NO. 25

SHEET 3 OF 21

NOTES MOSER DATE 5/14/02
 H.C. BARNHISEL WEATHER PTLY CLOUDY
 R.C. LOEHRKE TEMP. 55°
HOFFMAN

ROUTE SR 51
 COUNTY OTTAWA
 TOWNSHIP CLAY
 SECTION 34

DWG BY NIESE PID 94324

T 7 N R 13 E

TYPE MONUMENT BOAT SPIKE

~~ON SURFACE~~ - BELOW 4"

OFFSET \varnothing PAVEMENT 0.5' LT : ~~RT~~

- TO - EDGE PAVEMENT

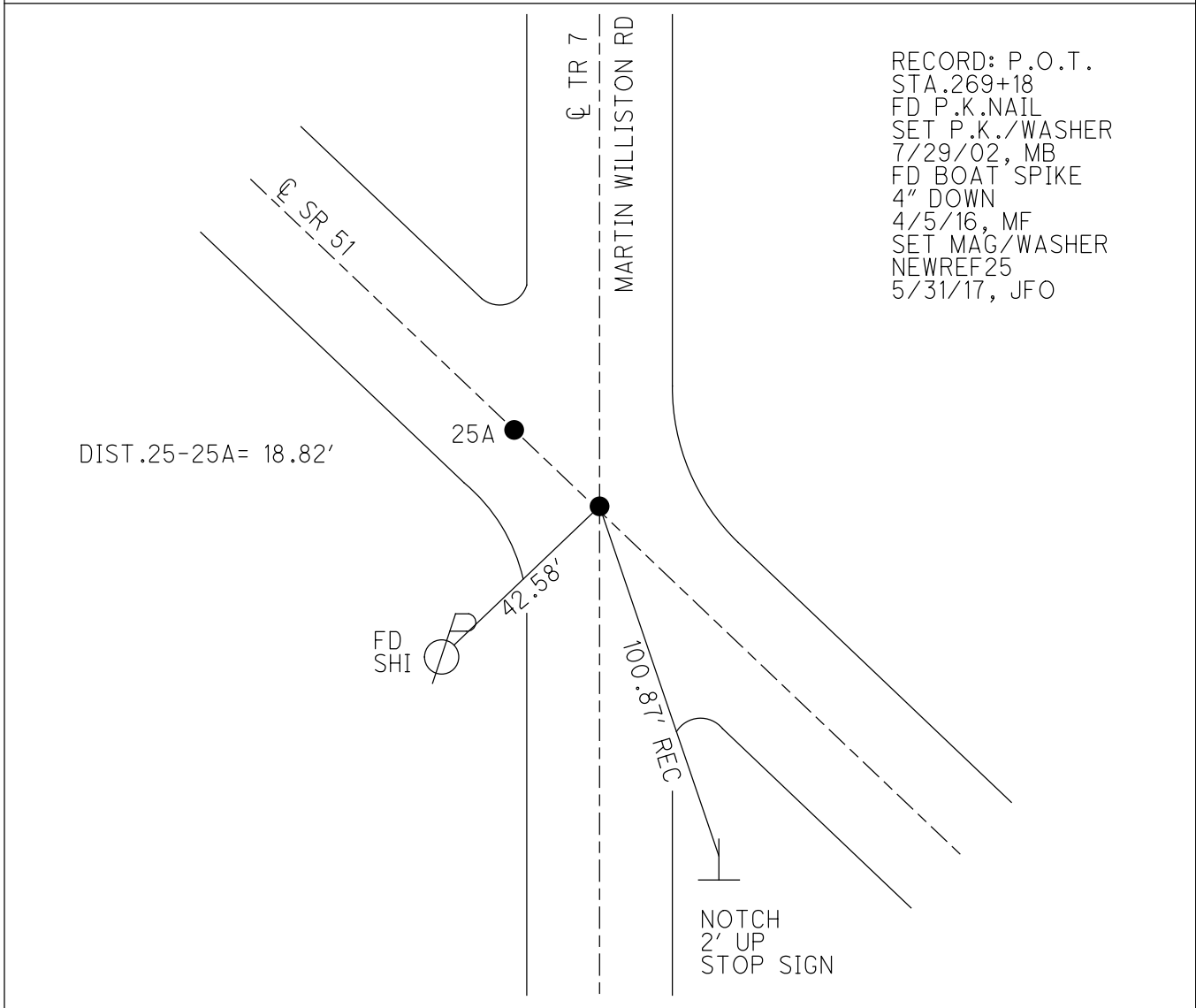
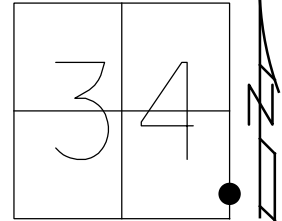
STATION: 269+03.55

HORZ.DATUM: NAD83 2011

GEOID: NAVD88 2012A

GRID: NORTHING: 675475.454

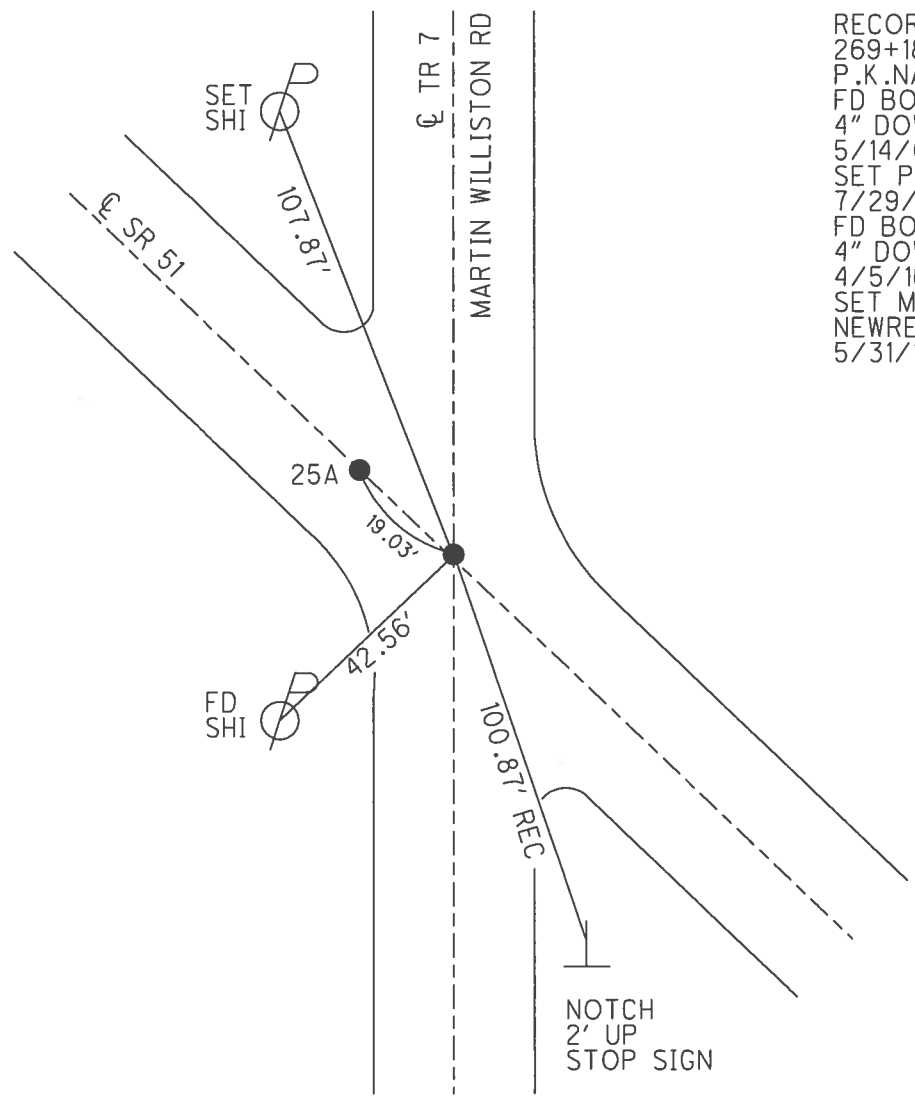
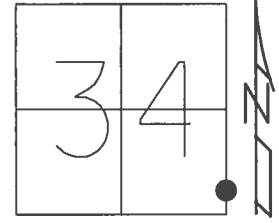
EASTING: 1738674.922



O.D.O.T. DISTRICT 2 SURVEY OFFICE (USE ONLY)

PERSONNEL _____ REFERENCE NO. 25 SHEET 3 OF 21
 NOTES RHOADES DATE 4/5/16 ROUTE SR 51
 H.C. FARKAS WEATHER CLEAR COUNTY OTTAWA
 R.C. HOMAN TEMP. 25° TOWNSHIP CLAY
 _____ SECTION 34
 _____ T 7 N R 13 E

TYPE MONUMENT BOAT SPIKE
~~ON SURFACE~~ - BELOW 5"
 LEFT - ☉ PAV'T - ~~RIGHT~~ 0.5'
 _____ TO _____ EDGE PAVEMENT
 S.L.M. 269+91
 Grid: Northing: 675475.479 Easting: 1738674.876



RECORD: P.O.T.
 269+18
 P.K.NAIL
 FD BOAT SPIKE
 4" DOWN
 5/14/02, MB
 SET P.K./WASHER
 7/29/02, MB
 FD BOAT SPIKE
 4" DOWN
 4/5/16, MF
 SET MAG/WASHER
 NEWREF25
 5/31/17, JFO

O.D.O.T. DISTRICT 2 SURVEY OFFICE (USE ONLY)

PERSONNEL _____ REFERENCE NO. 25 SHEET 3 OF 21
 NOTES MOSER DATE 5/14/02 ROUTE SR 51
 H.C. BARNHISEL WEATHER PTLY CLOUDY COUNTY OTTAWA
 R.C. LOEHRKE TEMP. 55° TOWNSHIP CLAY
HOFFMAN SECTION 34
 T 7 N R 13 E

TYPE MONUMENT BOAT SPIKE

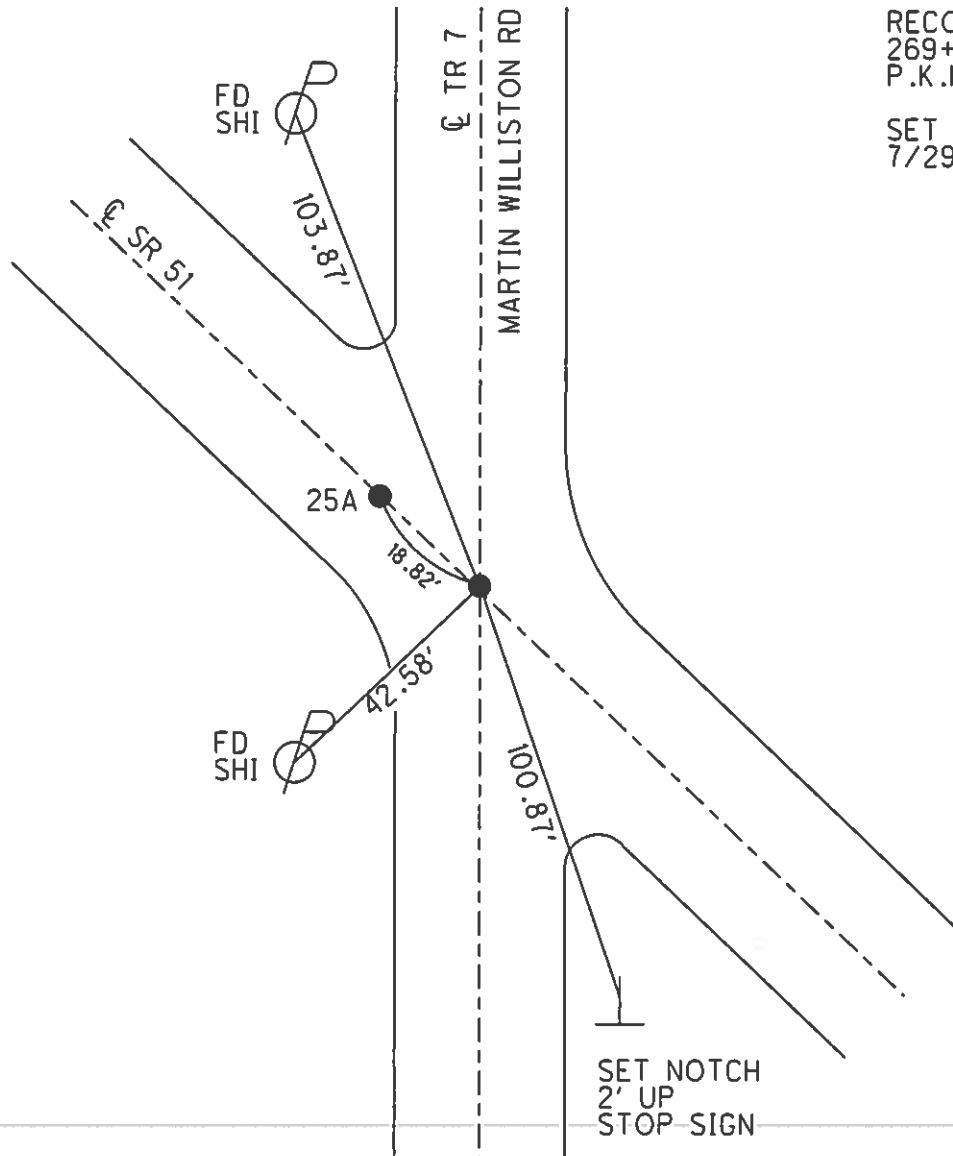
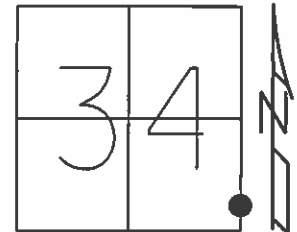
~~ON SURFACE~~ - BELOW 4"

LEFT - ☉ PAV'T - ~~RIGHT~~ 0.5'

- TO - EDGE PAVEMENT

S.L.M. 269+91

Grid: Northing: - Easting: -



RECORD: P.O.T.
269+18
P.K.NAIL

SET P.K./WASHER
7/29/02, MB

| PERSONNEL | TITLE | PERSONNEL | TITLE |
|-----------|-------|-----------|-------|
| | | | |
| | | | |
| | | | |

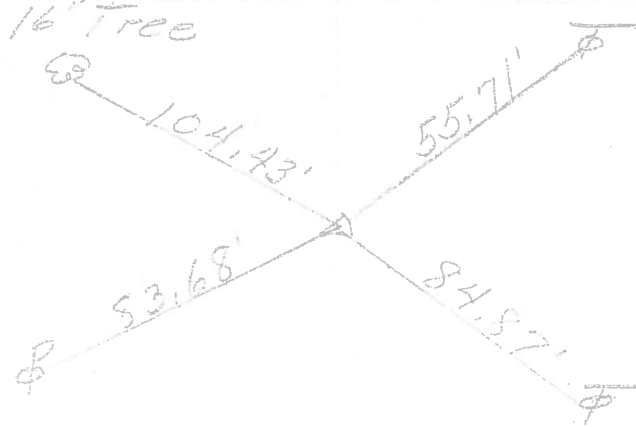
COUNTY Ottawa DATE 1-11-72
 S. R. 51 WEATHER Fair
 SEC. 34 & 35 TEMP. 40°

DESCRIPTION Clay Twp. JOB NO. _____

LEFT CENTER LINE RIGHT

P.I.
 297+16.7
 small spk.
 $\Delta = 0^\circ 04' \text{ Rt}$

27

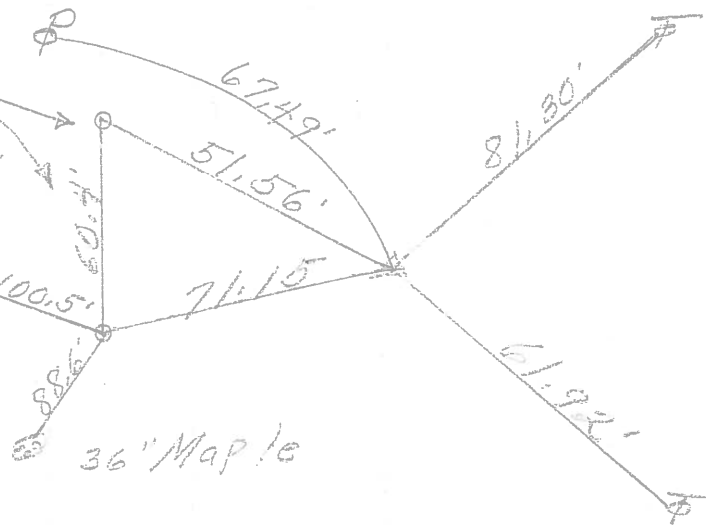


2-spry Kaps
 15" down

P.I.
 287+55.03
 $\Delta = 0^\circ 11' \text{ Lt}$
 287+34.43

26

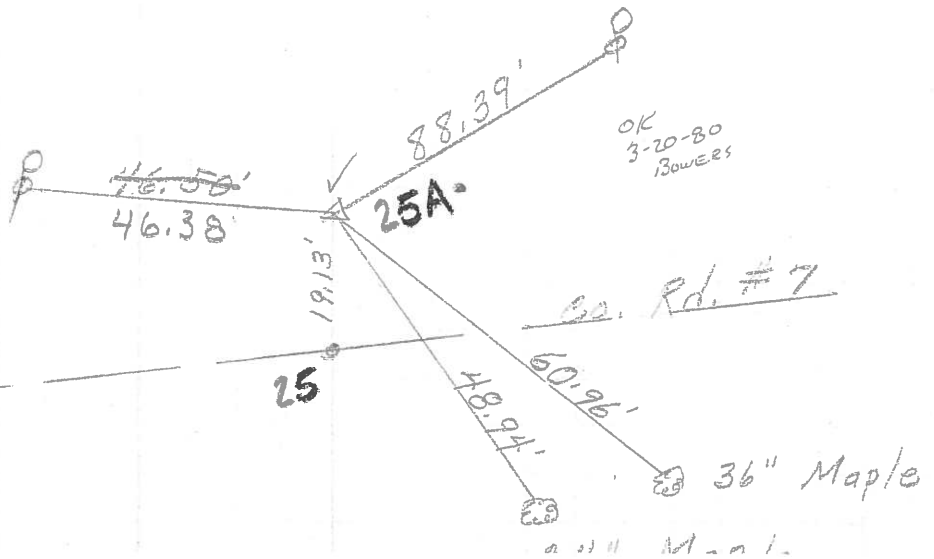
Well base



P.I.
 269+37.15
 $\Delta = 0^\circ 38' \text{ Lt}$
 P.K. Nail

P.O.T. 269+18.0
 N. & S.

25



PERSONNEL TITLE PERSONNEL TITLE

Schneider

Mosser

Barbour

Rending

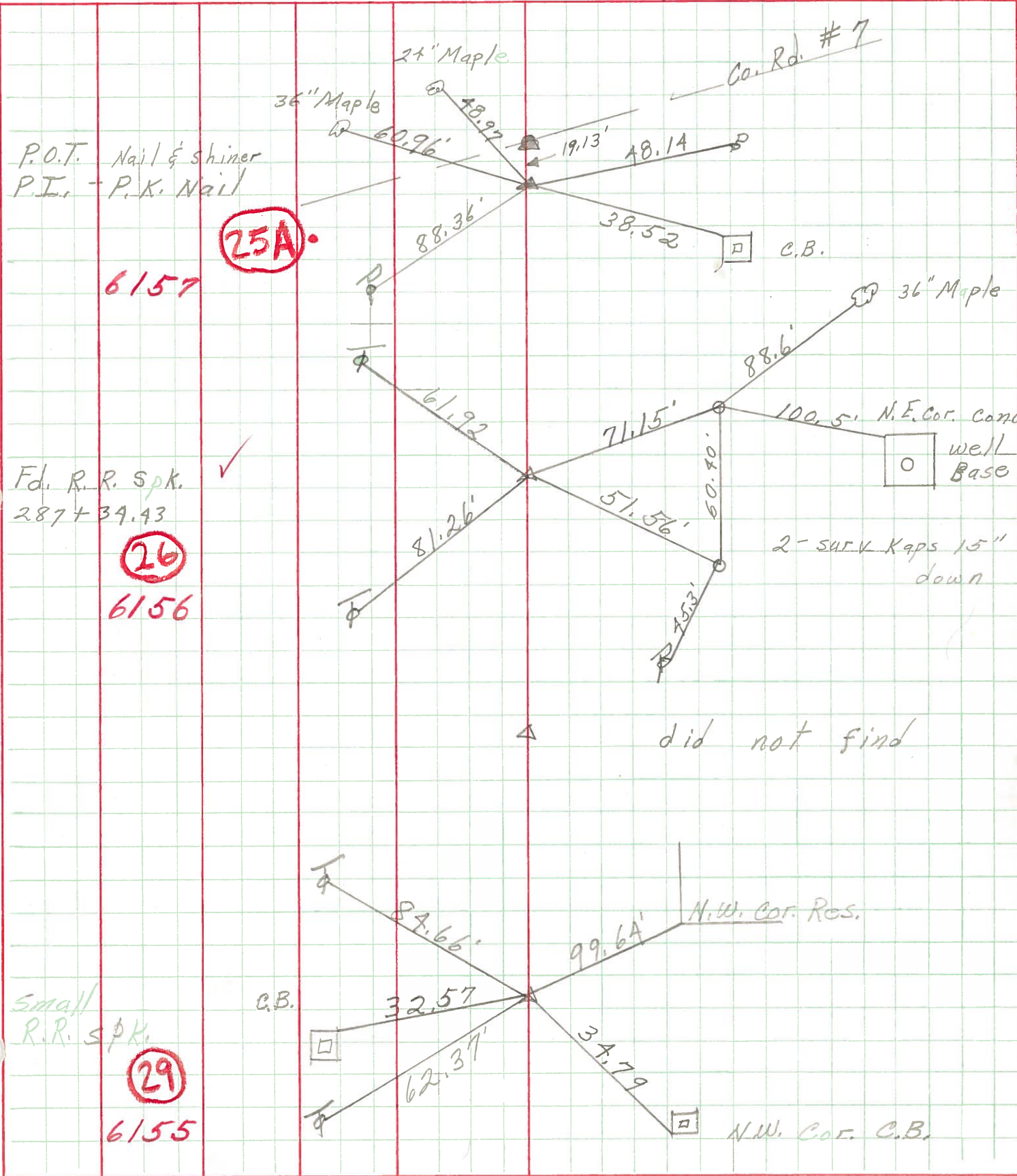
COUNTY Ottawa DATE 6-20-68

S. R. 51 WEATHER Fair

SEC. Wood Co. Line-East TEMP. 75°

DESCRIPTION Ties for Control Points JOB NO.

LEFT CENTER LINE RIGHT



P.O.T. Nail & shiner
P.I. - P.K. Nail

6157

25A

Fd. R. R. Spk.
287 + 34.43

6156

26

Small R.R. Spk.

6155

29

did not find

N.W. Cor. Res.

N.W. Cor. C.B.