

O.D.O.T. DISTRICT 2 SURVEY OFFICE (USE ONLY)

PERSONNEL

REFERENCE NO. 25 A

SHEET 4 OF 21

NOTES RHOADES

DATE 4/5/16

ROUTE SR 51

H.C. FARKAS

WEATHER CLEAR

COUNTY OTTAWA

R.C. HOMAN

TEMP. 25°

TOWNSHIP CLAY

SECTION 34

DWG BY NIESE

PID 94324

T 7 N R 13 E

TYPE MONUMENT P.K./WASHER

~~ON SURFACE~~ - BELOW 4"

OFFSET ϕ PAVEMENT 0.5' LT : ~~RT~~

- TO - EDGE PAVEMENT

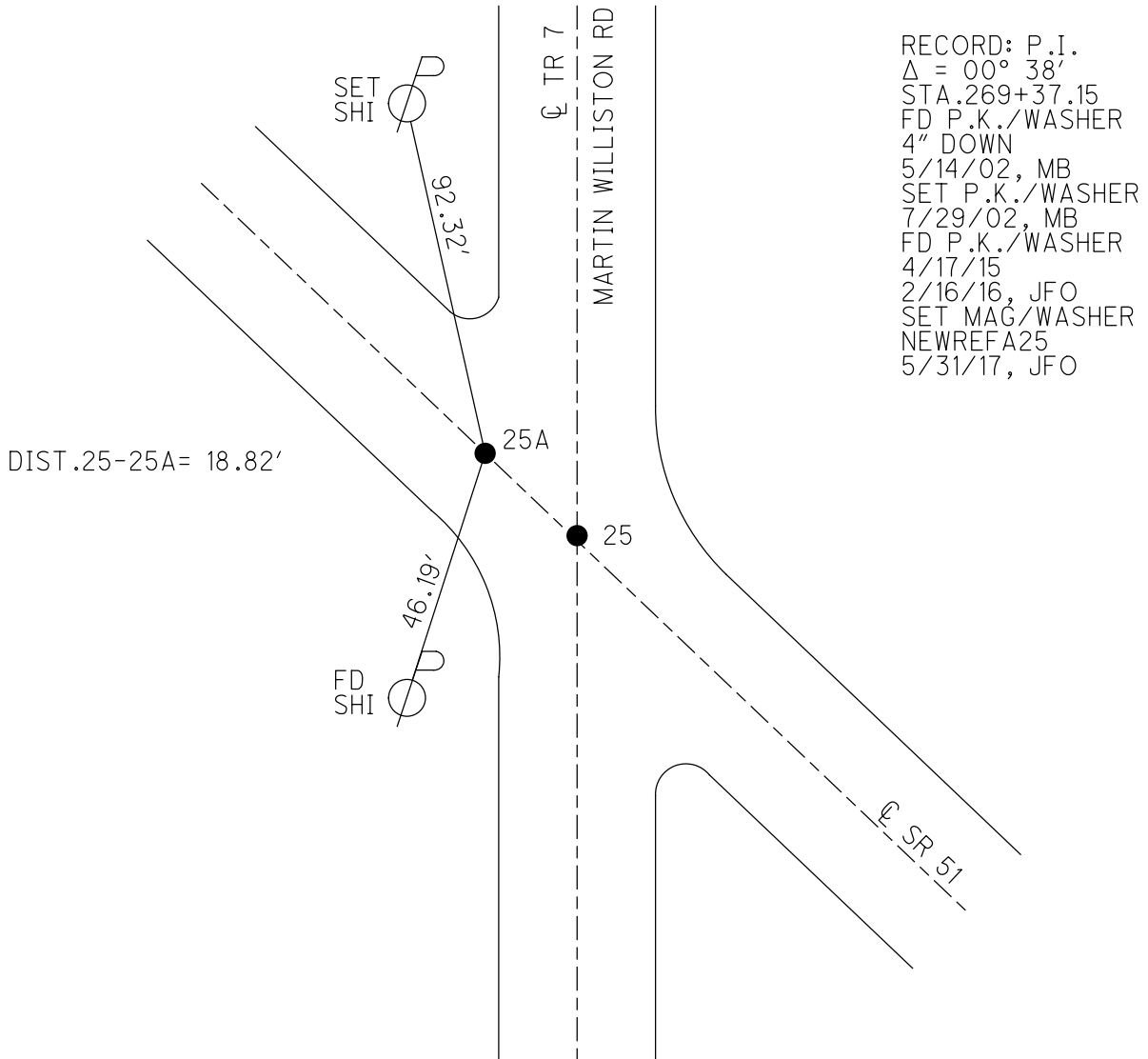
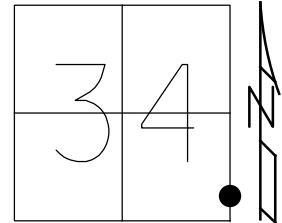
STATION: 269+22.37

HORZ.DATUM: NAD83 2011

GEOID: NAVD88 2012A

GRID: NORTHING: 675488.558

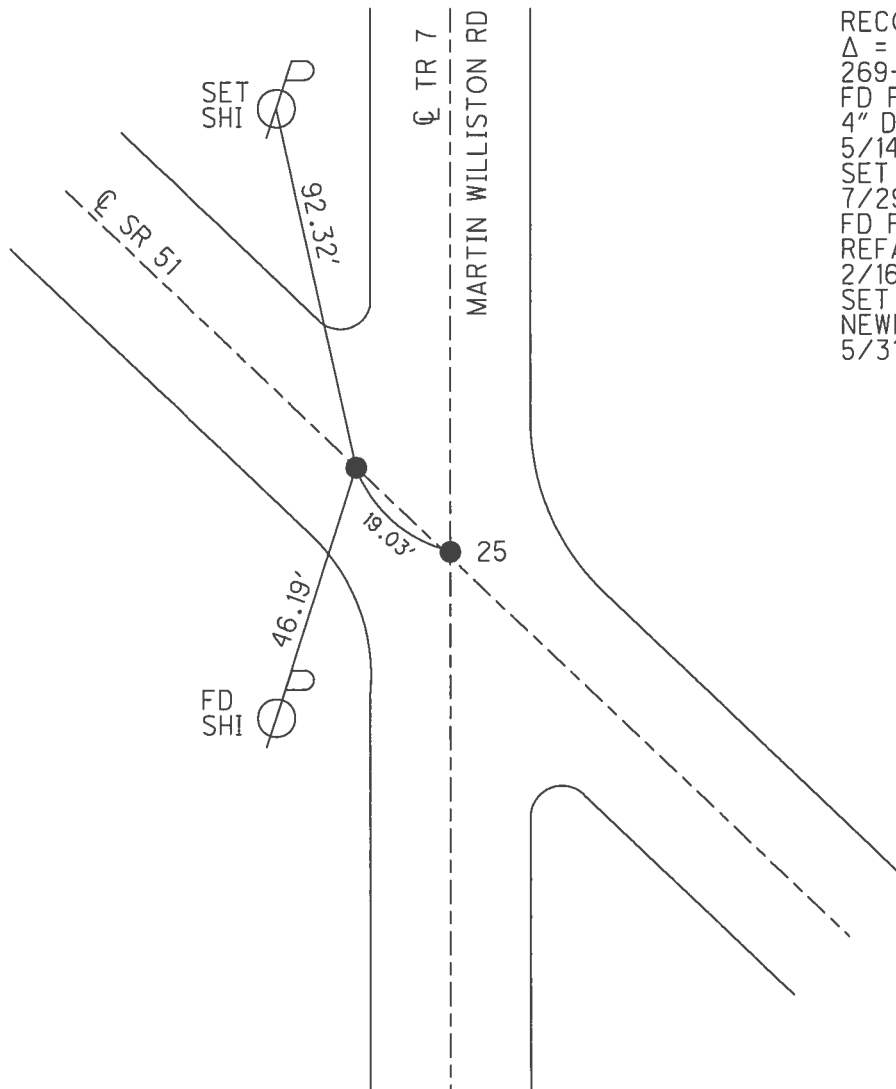
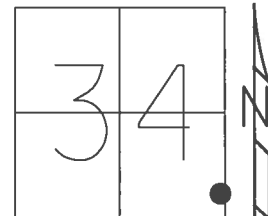
EASTING: 1738661.132



O.D.O.T. DISTRICT 2 SURVEY OFFICE (USE ONLY)

PERSONNEL _____ REFERENCE NO. 25 A SHEET 4 OF 21
 NOTES RHOADES DATE 4/5/16 ROUTE SR 51
 H.C. FARKAS WEATHER CLEAR COUNTY OTTAWA
 R.C. HOMAN TEMP. 25° TOWNSHIP CLAY
 _____ SECTION 34
 _____ T 7 N R 13 E

TYPE MONUMENT P.K./WASHER
~~ON SURFACE~~ - BELOW 4"
 LEFT - ☉ PAV'T - ~~RIGHT~~ 0.5', ±21' NW. OF ☉ SOUTH
- TO - EDGE PAVEMENT
 S.L.M. 270+10
 Grid: Northing: 675488.595 Easting: 1738661.128



RECORD: P.I.
 $\Delta = 00^\circ 38'$
 269+37.15
 FD P.K./WASHER
 4" DOWN
 5/14/02, MB
 SET P.K./WASHER
 7/29/02, MB
 FD P.K./WASHER
 REFA25
 2/16/16, JFO
 SET MAG/WASHER
 NEWREFA25
 5/31/17, JFO

O.D.O.T. DISTRICT 2 SURVEY OFFICE (USE ONLY)

PERSONNEL _____ REFERENCE NO. 25 A SHEET 4 OF 21
 NOTES MOSER DATE 5/14/02 ROUTE SR 51
 H.C. BARNHISEL WEATHER PTLY CLOUDY COUNTY OTTAWA
 R.C. LOEHRKE TEMP. 55° TOWNSHIP CLAY
HOFFMAN SECTION 34
 T 7 N R 13 E

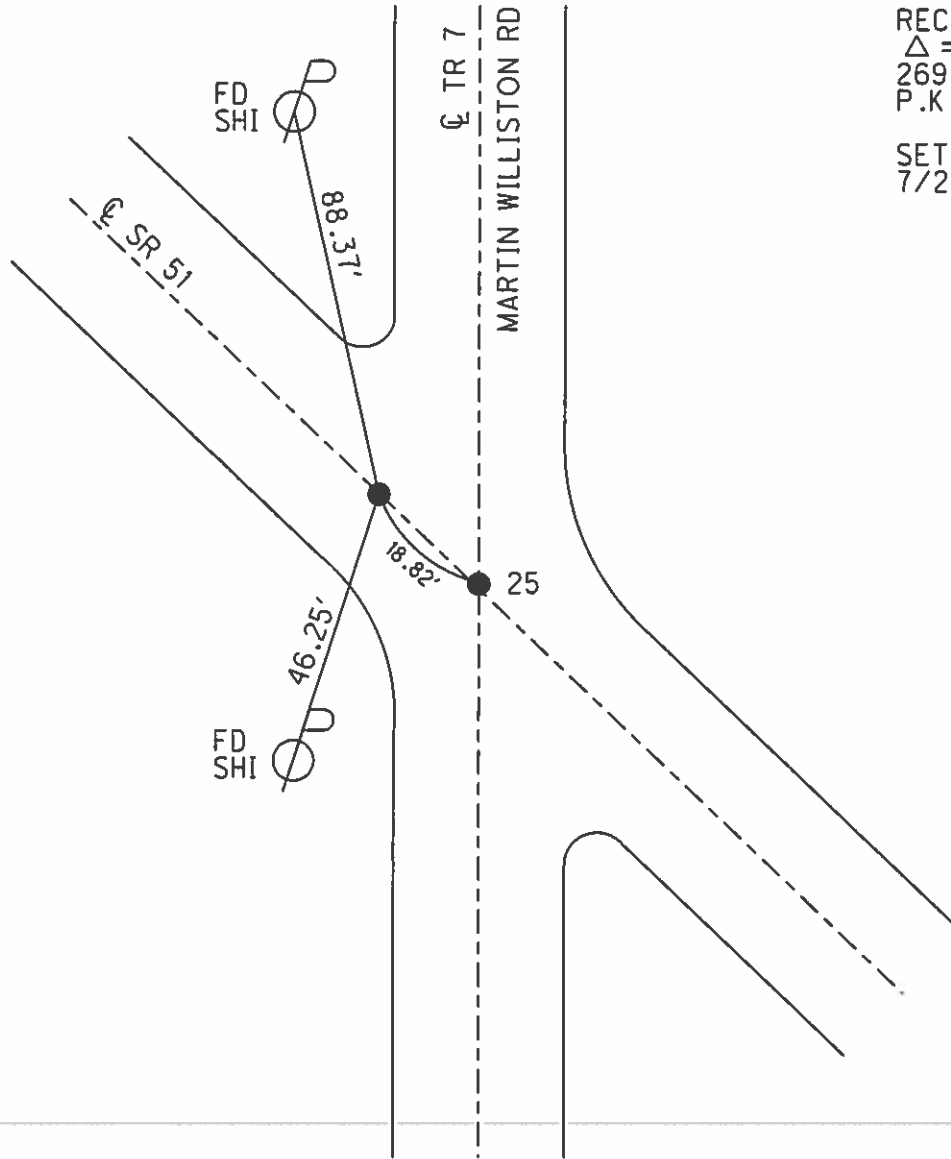
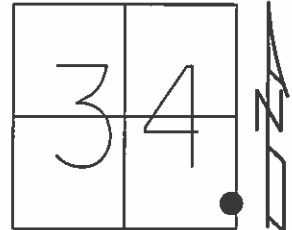
TYPE MONUMENT P.K./WASHER

~~ON SURFACE~~ - BELOW 4"

LEFT - ☉ PAV'T - ~~RIGHT~~ 0.5', ±21' NW. OF ☉ SOUTH
- TO - EDGE PAVEMENT

S.L.M. 270+10

Grid: Northing: - Easting: -



RECORD: P.I.
 $\Delta = 00^{\circ} 38'$
 269+37.15
 P.K.NAIL

SET P.K./WASHER
 7/29/02, MB

PERSONNEL	TITLE	PERSONNEL	TITLE

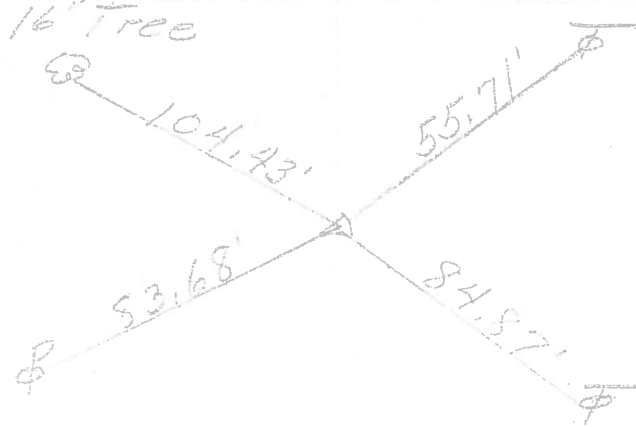
COUNTY Ottawa DATE 1-11-72
 S. R. 51 WEATHER Fair
 SEC. 34 & 35 TEMP. 40°

DESCRIPTION Clay Twp. JOB NO. _____

LEFT CENTER LINE RIGHT

P.I.
 297+16.7
 small spk.
 $\Delta = 0^\circ 04' \text{ Rt}$

27

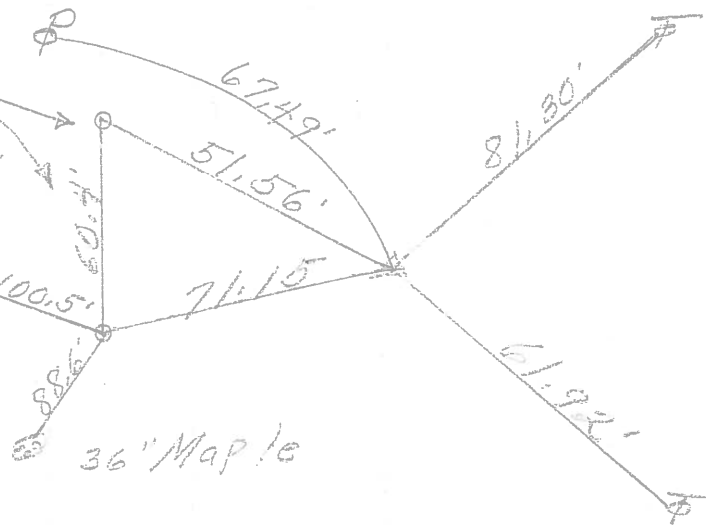


2-spry Kaps
 15" down

Well
 base

P.I.
 287+55.03
 $\Delta = 0^\circ 11' \text{ Lt}$
 287+34.43

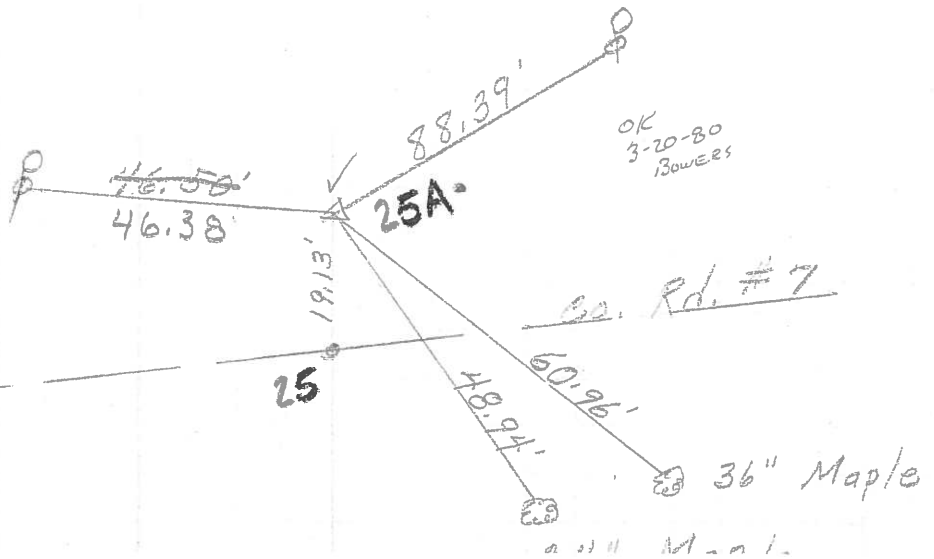
26



P.I.
 269+37.15
 $\Delta = 0^\circ 38' \text{ Lt}$
 P.K. Nail

P.O.T. 269+18.0
 N. & S.

25



OK
 3-20-80
 Bowers

Rd. #7

2nd Maple

PERSONNEL TITLE PERSONNEL TITLE

Schneider

Mosser

Barbour

Rending

COUNTY Ottawa DATE 6-20-68

S. R. 51 WEATHER Fair

SEC. Wood Co. Line-East TEMP. 75°

DESCRIPTION Ties for Control Points JOB NO.

LEFT CENTER LINE RIGHT

