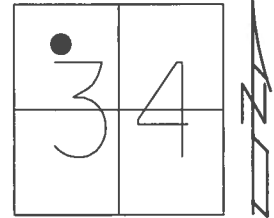


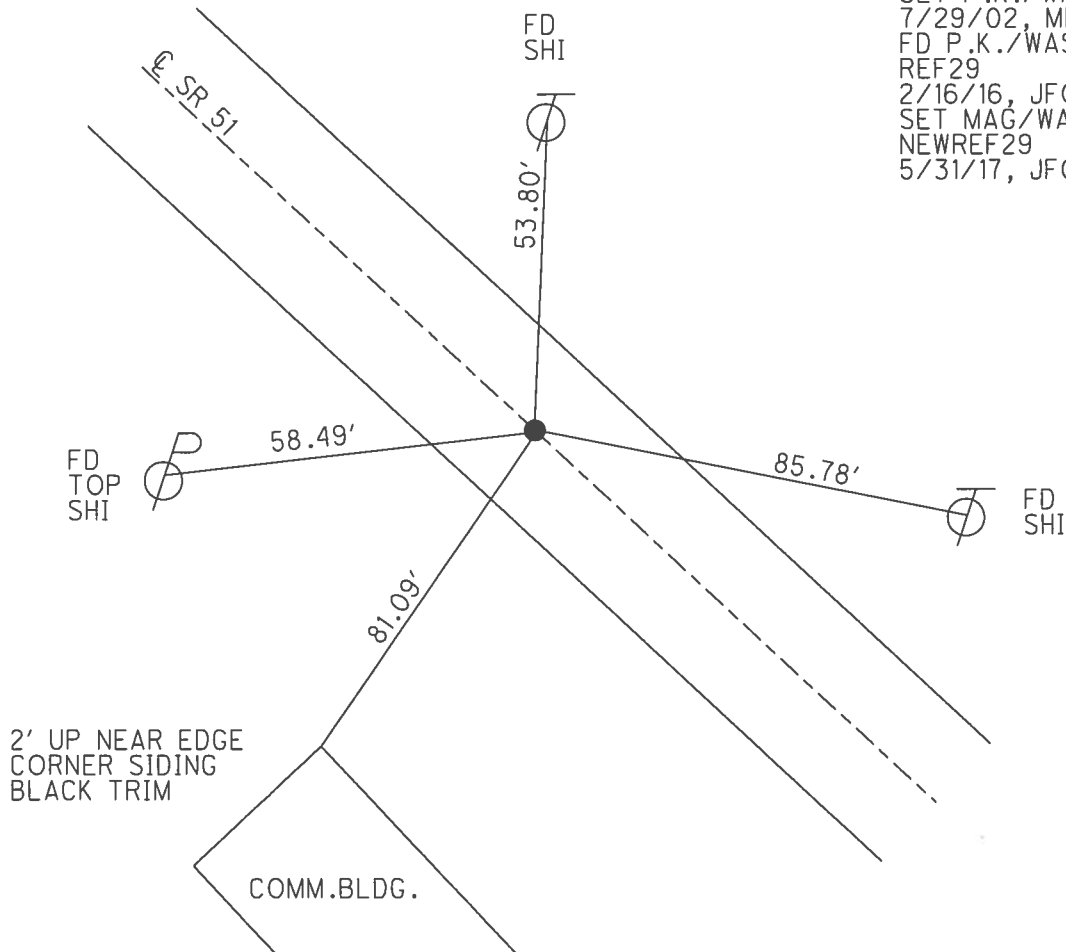
O.D.O.T. DISTRICT 2 SURVEY OFFICE (USE ONLY)

PERSONNEL _____ REFERENCE NO. 29 SHEET 7 OF 21
 NOTES RHOADES DATE 4/5/16 ROUTE SR 51
 H.C. FARKAS WEATHER CLEAR COUNTY OTTAWA
 R.C. HOMAN TEMP. 26° TOWNSHIP CLAY
 _____ SECTION 34
 _____ T 7 N R 13 E

TYPE MONUMENT P.K./WASHER
 ON SURFACE - ~~BELOW~~ ON
 LEFT - ☉ PAV'T - ~~RIGHT~~ 0.5'
17.9' TO LT EDGE PAVEMENT
 S.L.M. 322+55
 Grid: Northing: 679072.124 Easting: 1734836.037



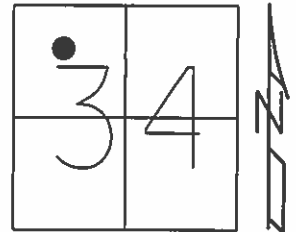
RECORD: P.I.
 $\Delta = 0^\circ 27' RT$
 321+80.7
 FD SM.R.R.SPIKE
 5/14/02, MB
 SET P.K./WASHER
 7/29/02, MB
 FD P.K./WASHER
 REF29
 2/16/16, JFO
 SET MAG/WASHER
 NEWREF29
 5/31/17, JFO



O.D.O.T. DISTRICT 2 SURVEY OFFICE (USE ONLY)

PERSONNEL _____ REFERENCE NO. 29 SHEET 7 OF 21
 NOTES MOSER DATE 5/14/02 ROUTE SR 51
 H.C. BARNHISEL WEATHER PTLY CLOUDY COUNTY OTTAWA
 R.C. LOEHRKE TEMP. 55° TOWNSHIP CLAY
 _____ HOFFMAN _____ SECTION 34
 _____ T 7 N R 13 E

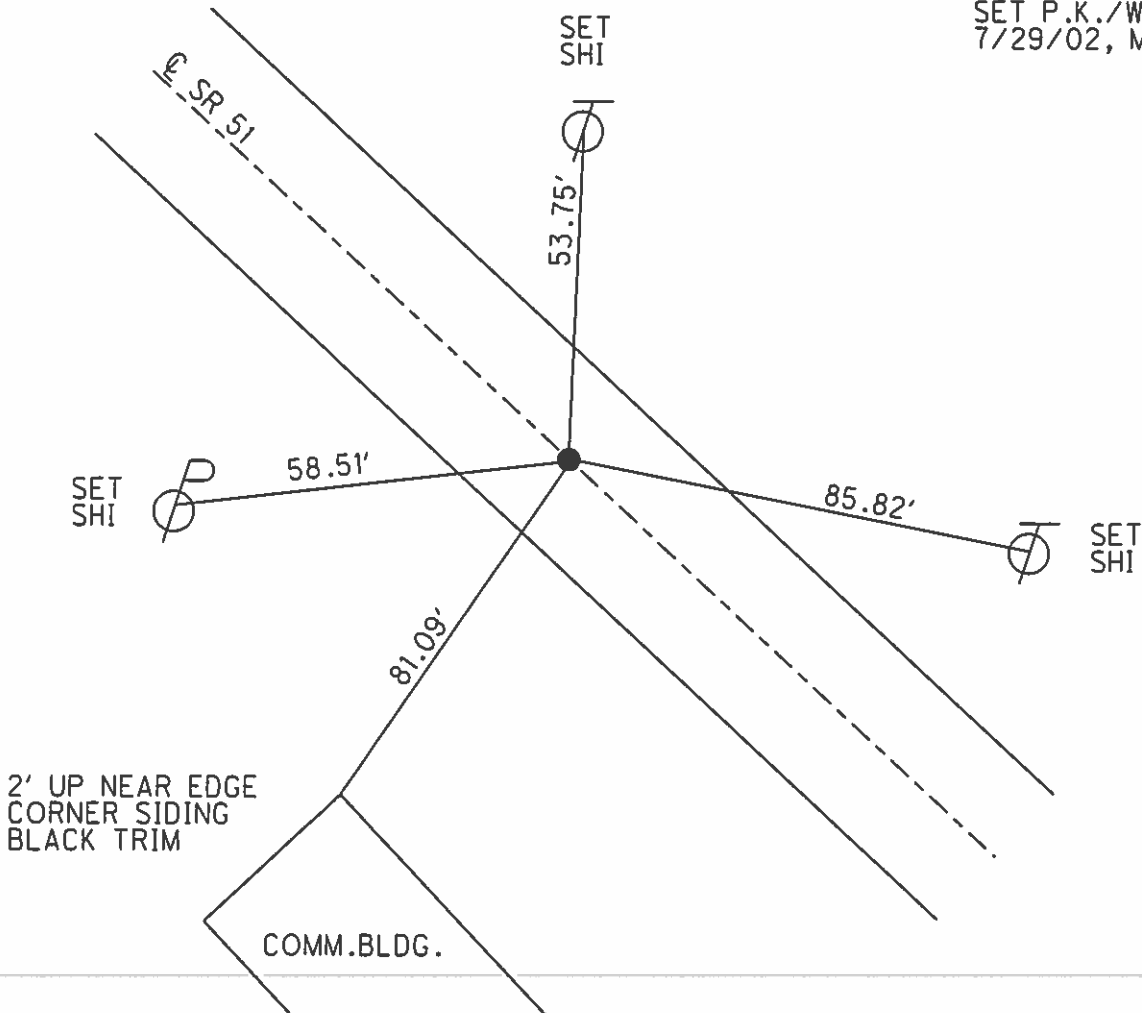
TYPE MONUMENT SM.R.R.SPIKE
 ON SURFACE - ~~BELOW~~ ON _____
 LEFT - ☉ PAV'T - ~~RIGHT~~ 0.5'
17.9' TO LT EDGE PAVEMENT
 S.L.M. 322+55



Grid: Northing: _____ Easting: _____

RECORD: P.I.
 $\Delta = 00^\circ 27' RT$
 321+80.7
 SM.R.R.SPIKE

SET P.K./WASHER
 7/29/02, MB



PERSONNEL TITLE PERSONNEL TITLE

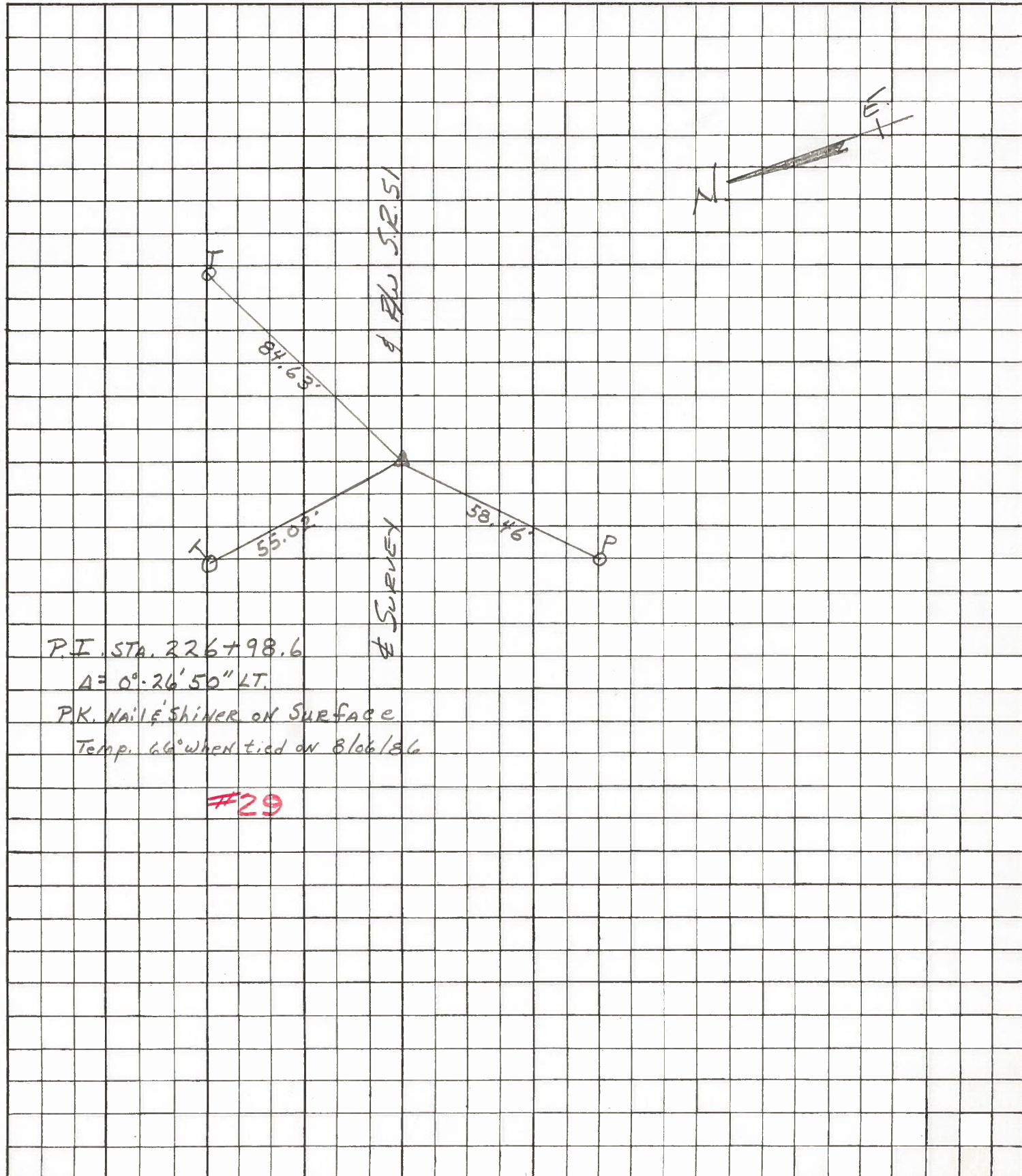
RIPPLE
BARBOUR
GEYMAN

COUNTY OTTAWA DATE 12/15/86

S. R. #51 WEATHER SUNNY

SEC. 34 TEMP. 34°

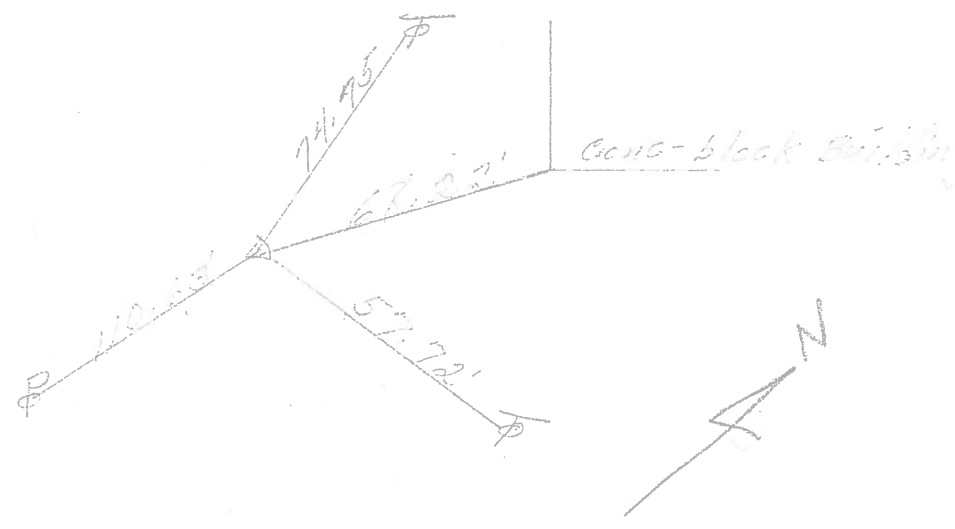
DESCRIPTION CLAY TWP. LEFT CENTER LINE RIGHT JOB NO.



PERSONNEL	TITLE	PERSONNEL	TITLE	COUNTY	DATE
				Ottawa	1-12-72
				S. R. 51	WEATHER Fair
				SEC. 27 & 34	TEMP. 40°
DESCRIPTION	clay Twp.			LEFT	CENTER LINE
					RIGHT
					JOB NO.

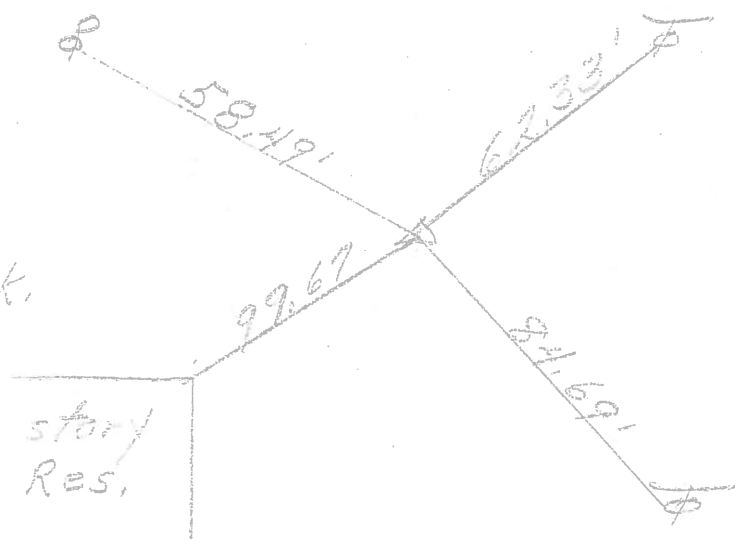
P.I.
 333+82.5
 $\Delta = 0^{\circ} 02' \text{ Rt.}$
 91.43'

30



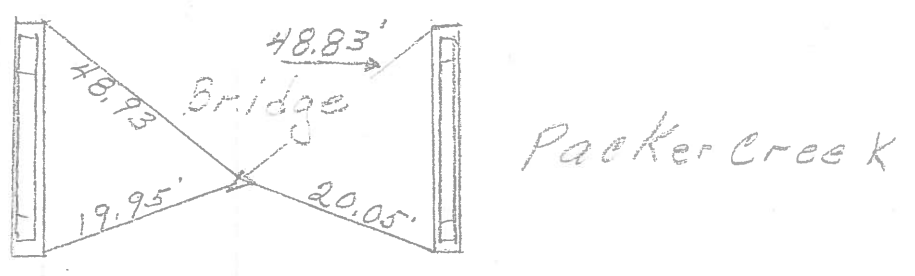
P.I.
 321+80.7
 Small RR. spk.
 $\Delta = 0^{\circ} 27' \text{ Rt.}$

29. 1 story Res.



P.I.
 308+07.20
 $\Delta = 0^{\circ} 35' \text{ Lt.}$
 Good ties set P.K.

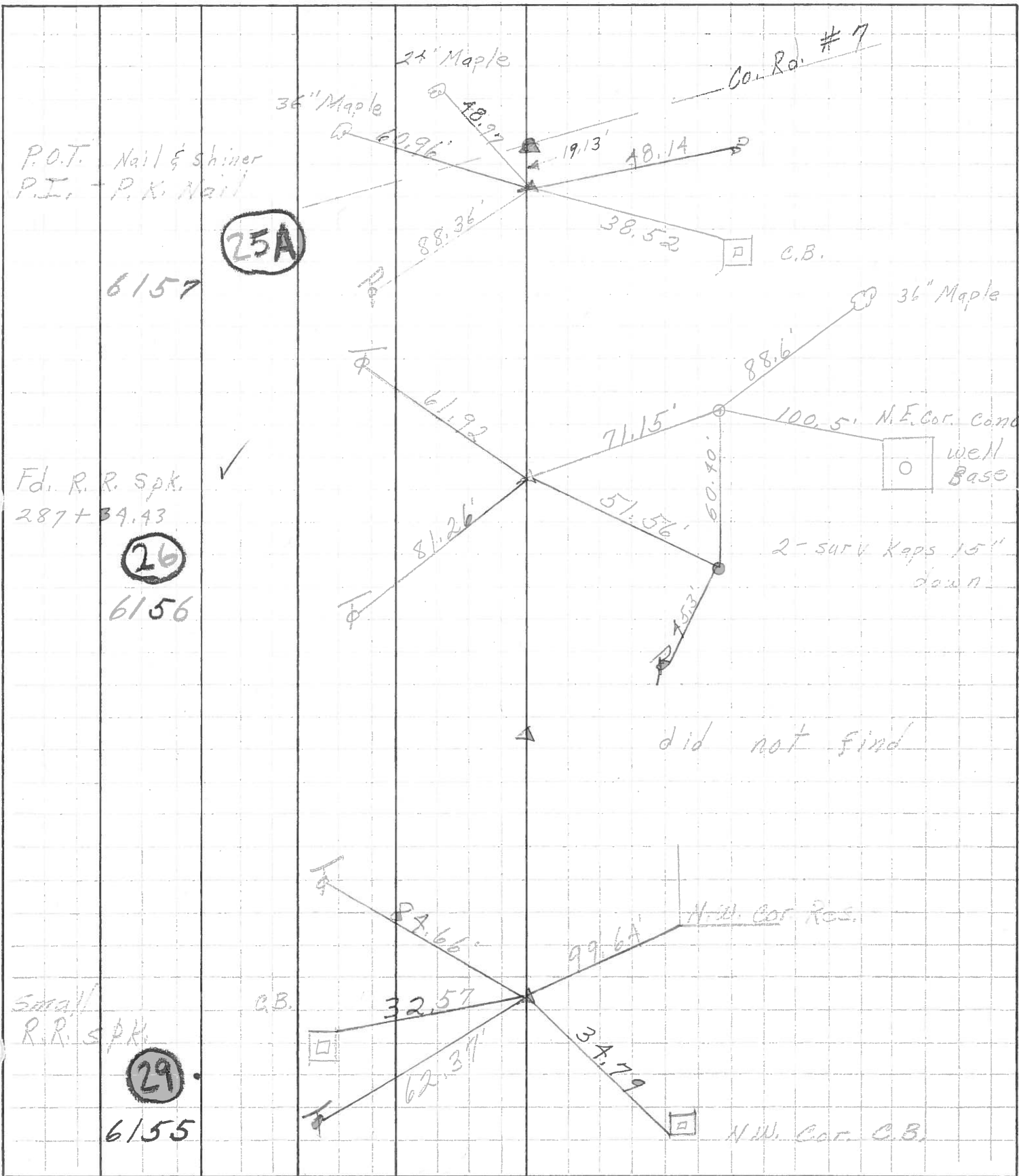
28



PERSONNEL	TITLE	PERSONNEL	TITLE
Schneider			
Mosser			
Burson			
Redding			

COUNTY Ottawa DATE 6-20-68
 S. R. 51 WEATHER Fair
 SEC Wood Co. Line-East TEMP. 75°

DESCRIPTION Ties for Control Points JOB NO. _____



P.O.T. Nail & shiner
 P.I. P.K. Nail

6157

25A

Fd. R. R. Spk.
 287+34.43

26

6156

Small R.R. Spk.

29

6155

did not find

N.W. Cor. Res.

N.W. Cor. C.B.