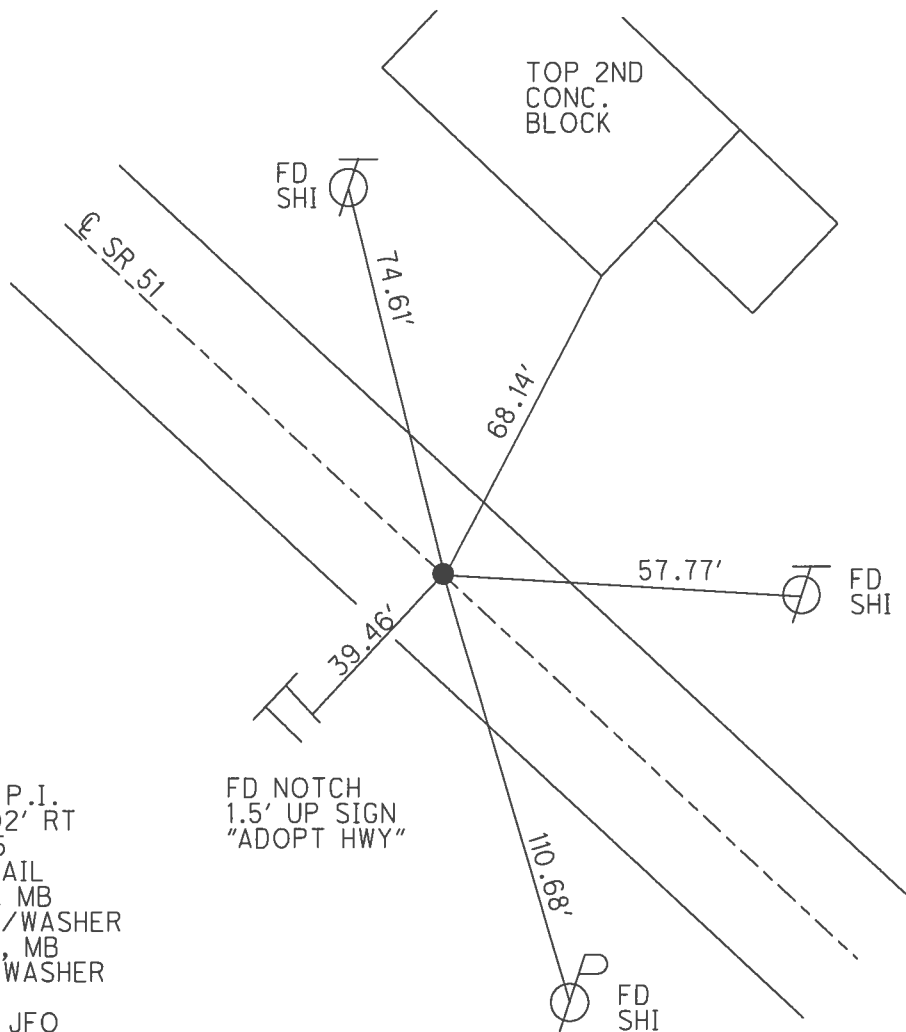
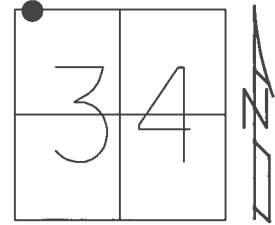


O.D.O.T. DISTRICT 2 SURVEY OFFICE (USE ONLY)

PERSONNEL _____ REFERENCE NO. 30 SHEET 8 OF 21
 NOTES RHOADES DATE 4/5/16 ROUTE SR 51
 H.C. FARKAS WEATHER CLOUDY COUNTY OTTAWA
 R.C. HOMAN TEMP. 26° TOWNSHIP CLAY
 _____ SECTION 34
 _____ T 7 N R 13 E

TYPE MONUMENT P.K./WASHER
 ON SURFACE - ~~BELOW~~ ON _____
 LEFT - ☉ PAV'T - RIGHT ON _____
17.8' TO LT EDGE PAVEMENT
 S.L.M. 334+72
 Grid: Northing: 679902.194 Easting: 1733947.734



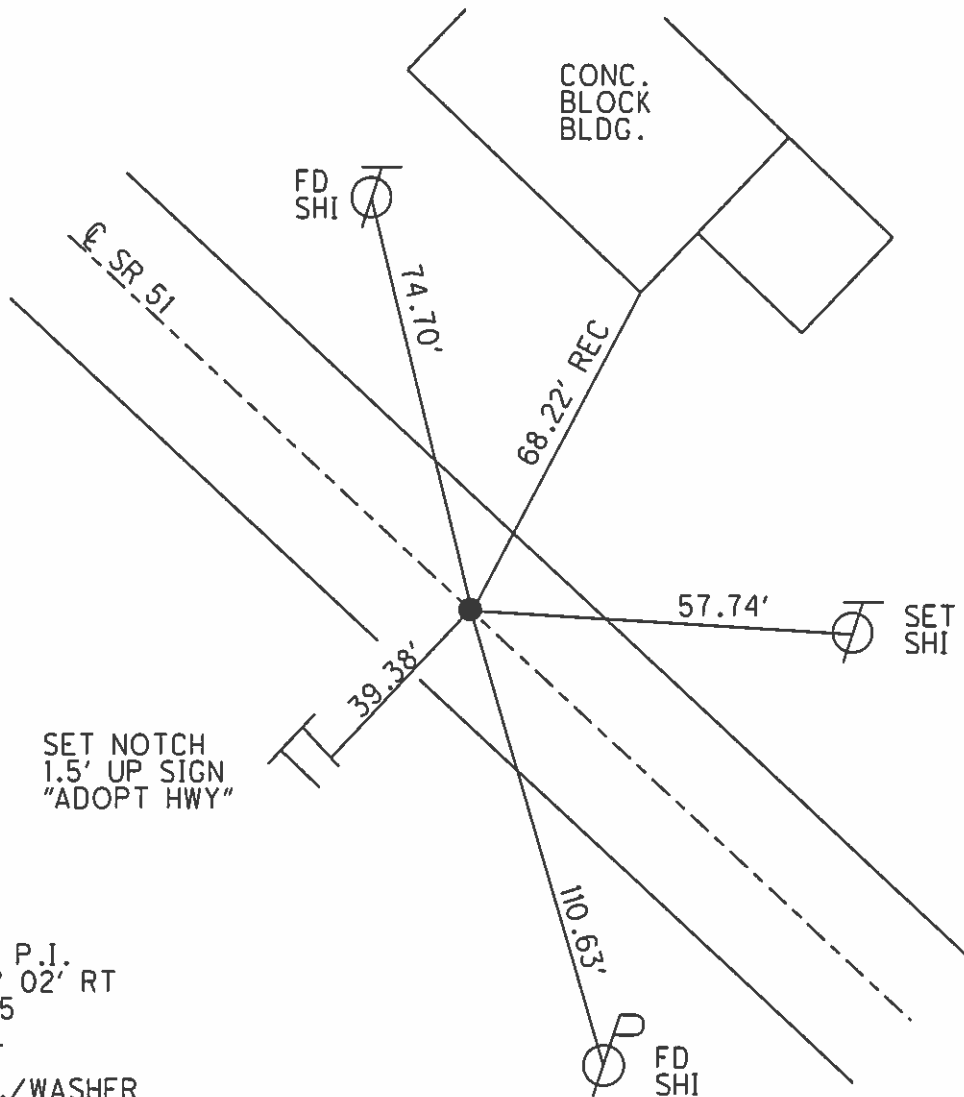
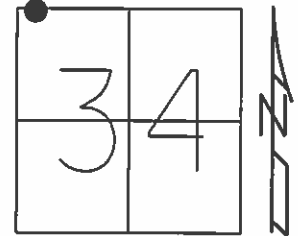
RECORD: P.I.
 $\Delta = 0^\circ 02' RT$
 333+82.5
 FD P.K. NAIL
 5/14/02, MB
 SET P.K./WASHER
 7/29/02, MB
 FD P.K./WASHER
 REF30
 2/16/16, JFO
 SET MAG/WASHER
 NEWREF30
 5/31/17, JFO

O.D.O.T. DISTRICT 2 SURVEY OFFICE (USE ONLY)

PERSONNEL _____ REFERENCE NO. 30 SHEET 8 OF 21
 NOTES MOSE DATE 5/14/02 ROUTE SR 51
 H.C. BARNHISEL WEATHER PTLY CLOUDY COUNTY OTTAWA
 R.C. LOEHRKE TEMP. 55° TOWNSHIP CLAY
HOFFMAN SECTION 34
 T 7 N R 13 E

TYPE MONUMENT P.K.NAIL
~~ON SURFACE~~ - BELOW 2"
 LEFT - ☉ PAV'T - RIGHT ON
17.8' TO LT EDGE PAVEMENT
 S.L.M. 334+72

Grid: Northing: - Easting: -



SET NOTCH
 1.5' UP SIGN
 "ADOPT HWY"

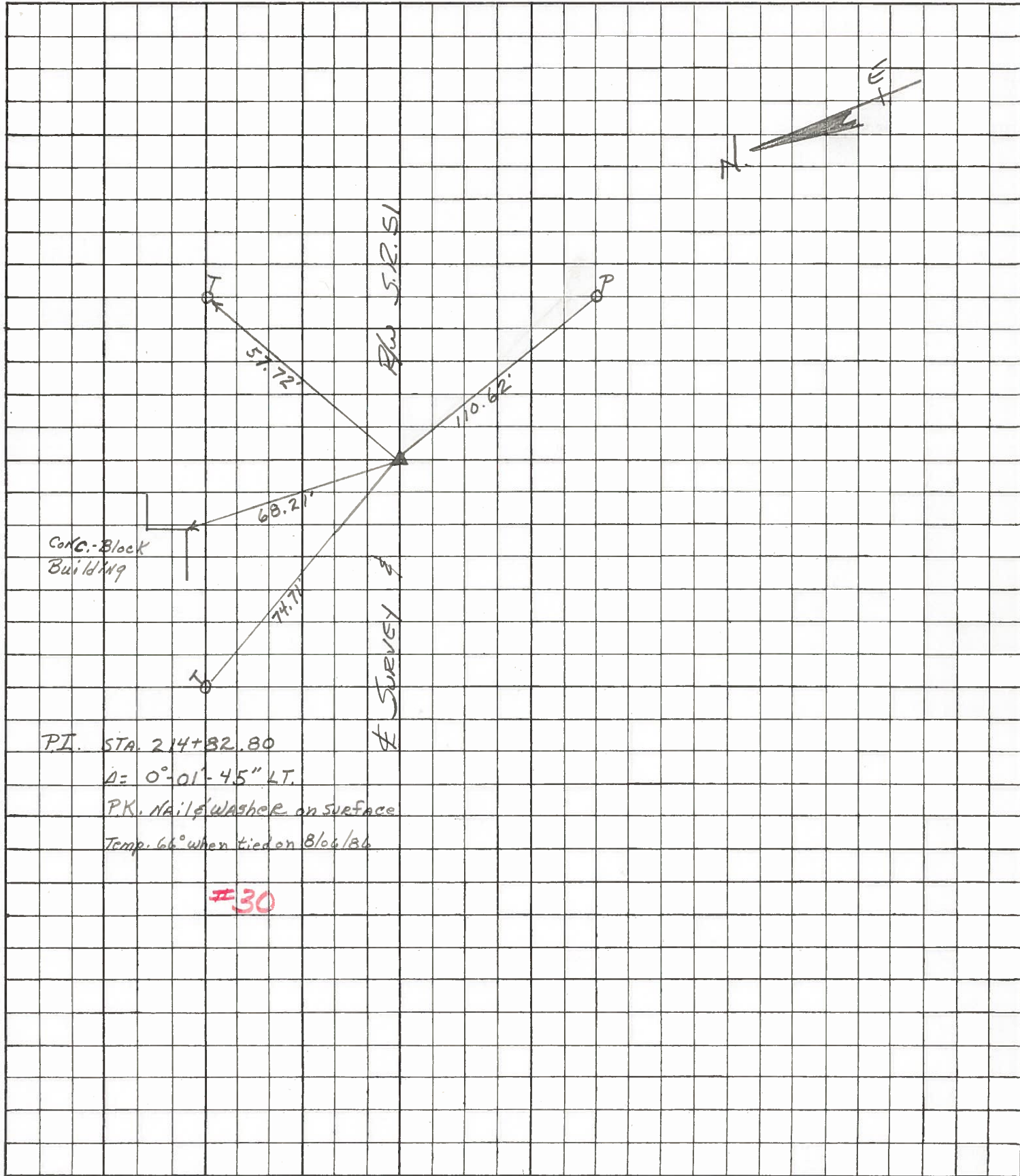
RECORD: P.I.
 $\Delta = 00^\circ 02' RT$
 333+82.5
 P.K.NAIL

SET P.K./WASHER
 7/29/02, MB

PERSONNEL	TITLE	PERSONNEL	TITLE
RIPPLE			
BARBOUR			
GEYMAN			

COUNTY OTTAWA DATE 12/15/86
 S. R. #51 WEATHER SUNNY
 SEC. ~~27~~ 34 TEMP. 34°

DESCRIPTION CLAY TWP. JOB NO. _____
 LEFT CENTER LINE RIGHT



P.I. STA. 214+82.80
 $\Delta = 0^{\circ}-01'-45''$ LT.
 P.K. NAIL & WASHER on SURFACE
 Temp. 66° when tied on 8/06/86

#30

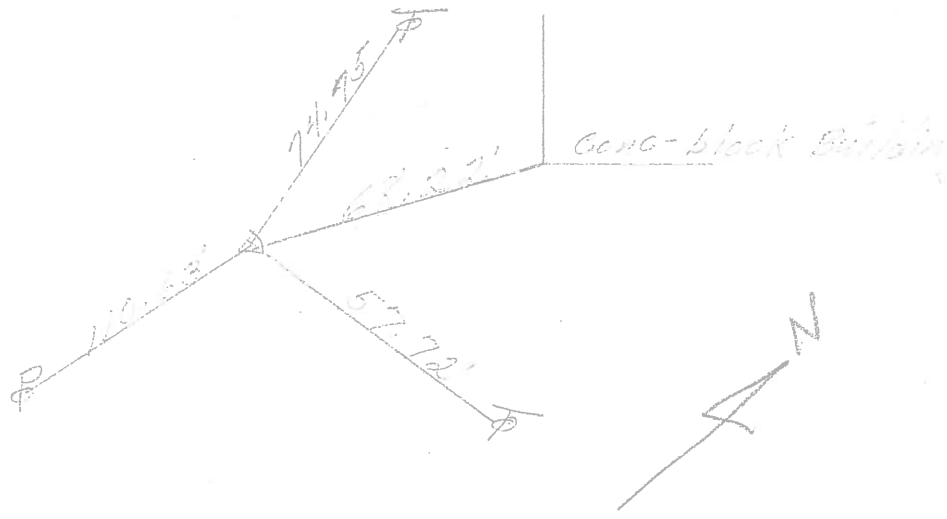
PERSONNEL	TITLE	PERSONNEL	TITLE	COUNTY	DATE
				<u>Ottawa</u>	<u>1-12-72</u>
				S. R. <u>51</u>	WEATHER <u>Fair</u>
				SEC. <u>27 & 34</u>	TEMP. <u>40°</u>
DESCRIPTION					JOB NO.

clay top

LEFT CENTER LINE RIGHT

P.I.
 333+82.5
 $\Delta = 0^\circ 02' \text{ Rt}$
 B.K. Val.

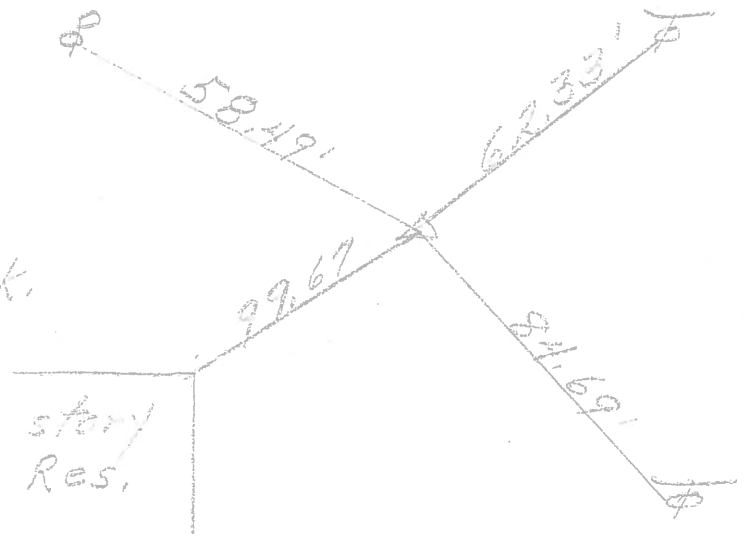
30.



P.I.
 321+80.7
 Small RR. spk.
 $\Delta = 0^\circ 27' \text{ Rt}$

29

1 story
 Res.



P.I.
 308+07.20
 $\Delta = 0^\circ 35' \text{ Lt}$
 Good ties set P.K.

28

