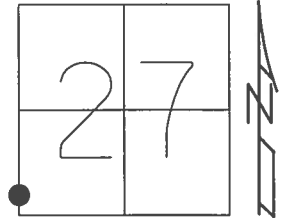


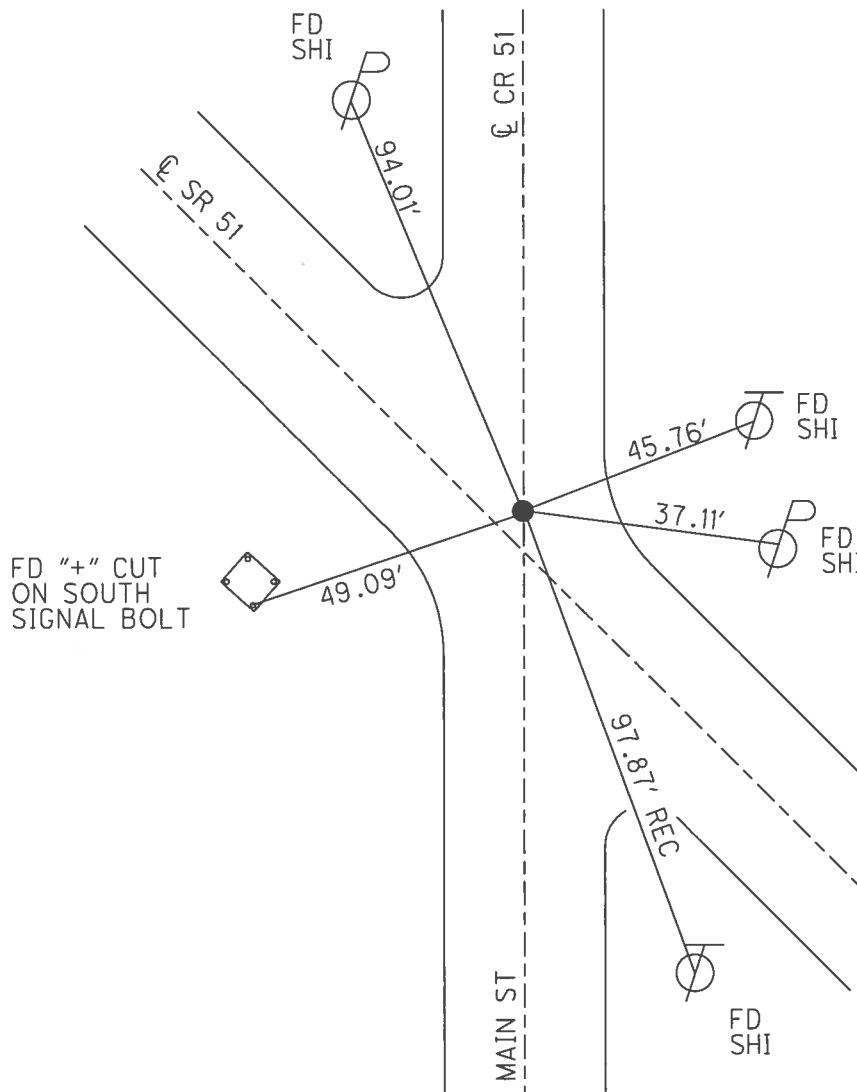
O.D.O.T. DISTRICT 2 SURVEY OFFICE (USE ONLY)

PERSONNEL \_\_\_\_\_ REFERENCE NO. 32 SHEET 9 OF 21  
 NOTES RHOADES DATE 4/5/16 ROUTE SR 51  
 H.C. FARKAS WEATHER CLOUDY COUNTY OTTAWA  
 R.C. HOMAN TEMP. 26° TOWNSHIP CLAY  
 \_\_\_\_\_ SECTION 27  
 \_\_\_\_\_ T 7 N R 13 E

TYPE MONUMENT P.K./WASHER  
~~ON SURFACE~~ - BELOW 3 1/2"  
~~LEFT~~ - ☉ PAV'T - RIGHT 1'  
 \_\_\_\_\_ TO \_\_\_\_\_ EDGE PAVEMENT  
 S.L.M. 342+06



Grid: Northing: 680402.766 Easting: 1733412.563



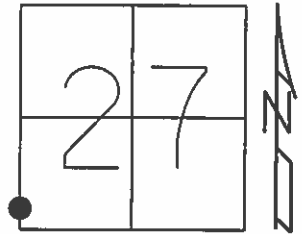
RECORD: P.I.  
 $\Delta = 0^\circ 26' RT$   
 207+50  
 FD P.K.NAIL  
 5/15/02, MB  
 SET P.K./WASHER  
 7/29/02, MB  
 FD P.K./WASHER  
 3 1/2" DOWN  
 REF32  
 4/5/16, JFO  
 SET MAG/WASHER  
 NEWREF32  
 5/31/17, JFO

O.D.O.T. DISTRICT 2 SURVEY OFFICE (USE ONLY)

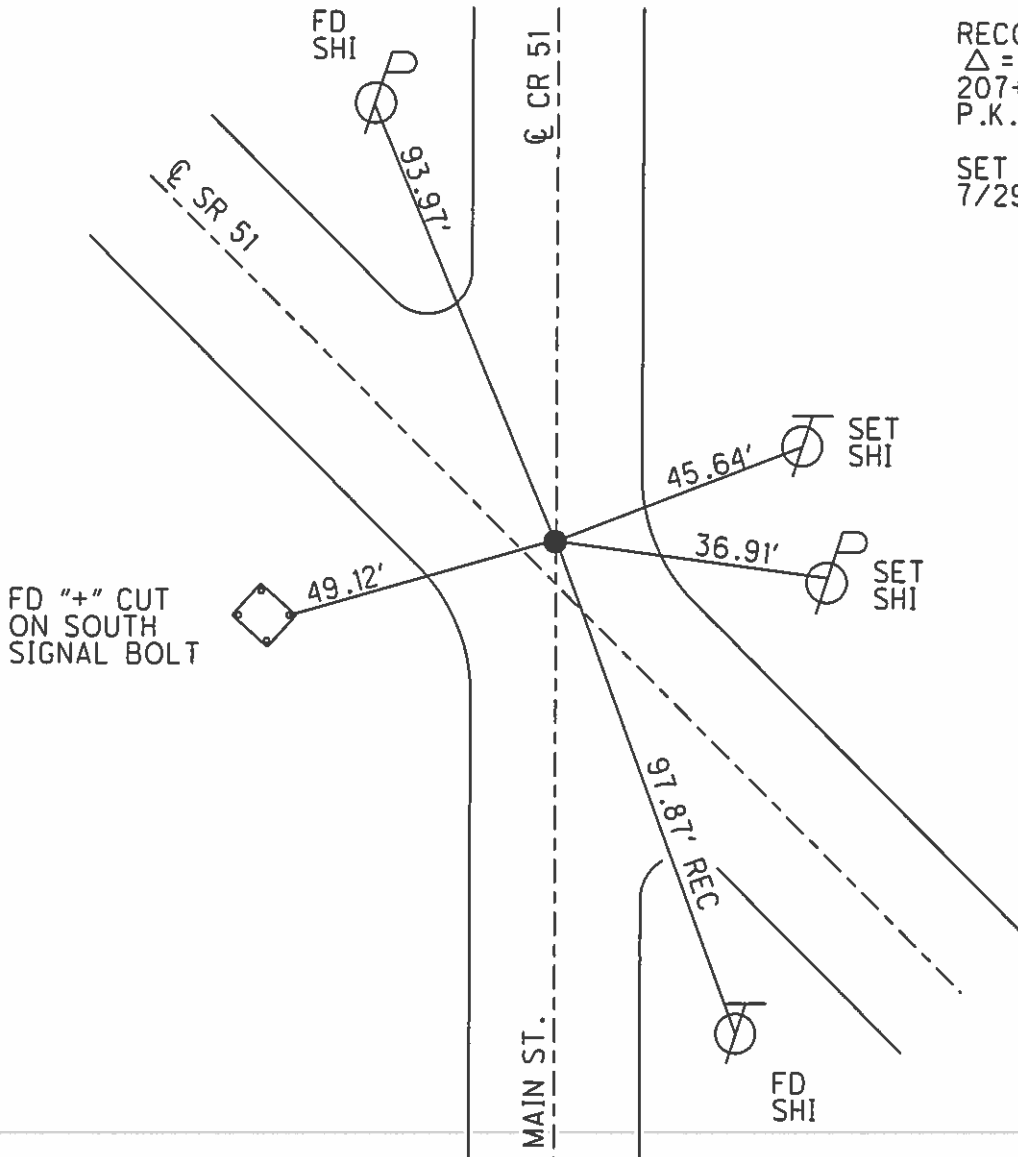
PERSONNEL \_\_\_\_\_ REFERENCE NO. 32 SHEET 9 OF 21

NOTES MOSER DATE 5/15/02 ROUTE SR 51  
 H.C. BARNHISEL WEATHER SUNNY COUNTY OTTAWA  
 R.C. LOEHRKE TEMP. 70° TOWNSHIP CLAY  
HOFFMAN SECTION 27  
 T 7 N R 13 E

TYPE MONUMENT P.K.NAIL  
 ON SURFACE - ~~BELOW~~ ON \_\_\_\_\_  
~~LEFT~~ - ☉ PAV'T - RIGHT 6.8'  
 - TO - EDGE PAVEMENT  
 S.L.M. 342+06



Grid: Northing: \_\_\_\_\_ Easting: \_\_\_\_\_



RECORD: P.I.  
 $\Delta = 00^\circ 26' RT$   
 207+50.0  
 P.K.NAIL  
 SET P.K./WASHER  
 7/29/02, MB

O.D.O.T. DISTRICT 2 SURVEY OFFICE

PERSONNEL

REFERENCE NO. 32

SHEET 3 OF 6

NOTES CRONIN

H.C. E

DATE 8-6-86

ROUTE 51

R.C. CREW

WEATHER CLOUDY

COUNTY OTTAWA

TEMP. +66

TOWNSHIP CLAY

SECTION 27

T7 N R 13 E

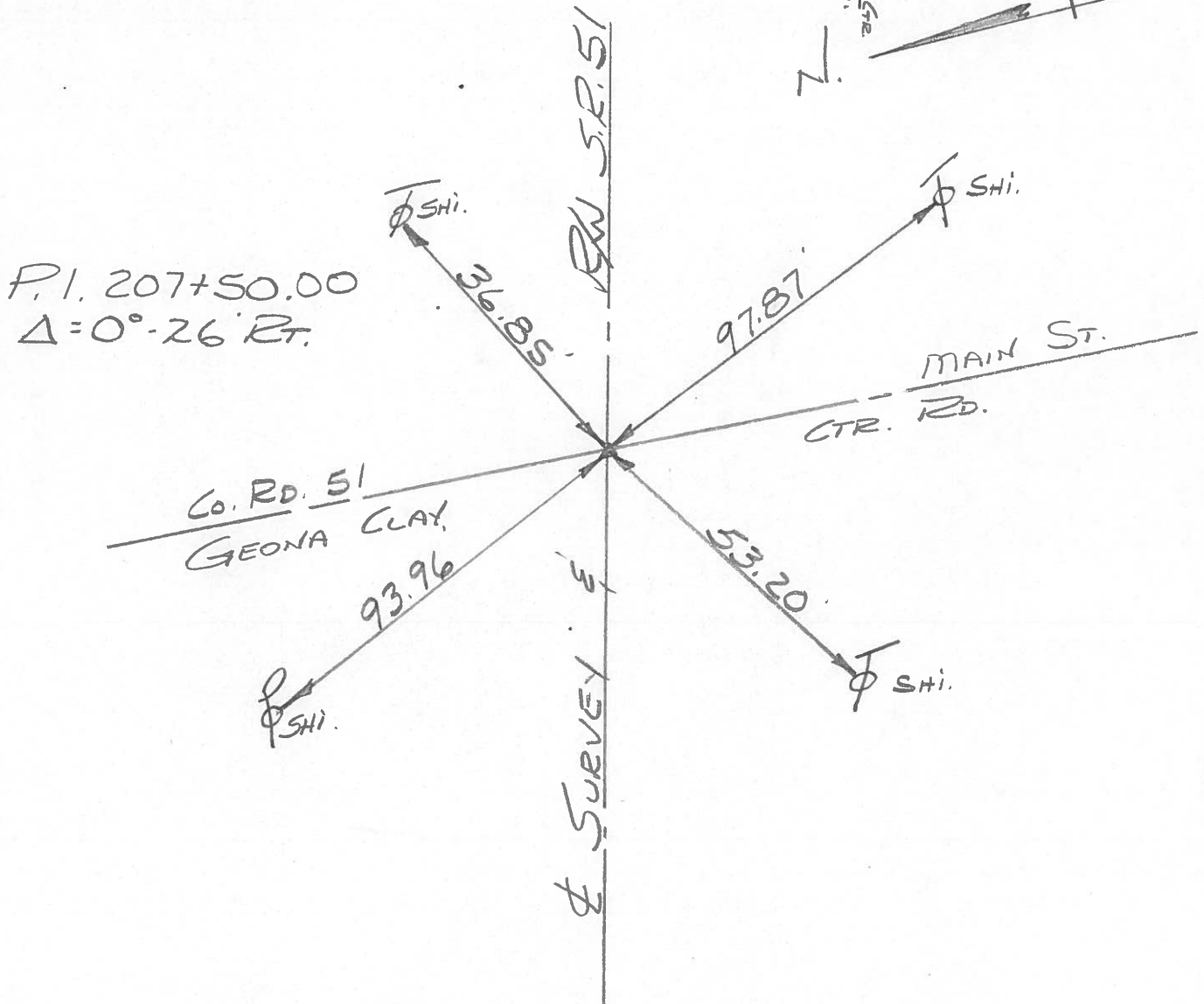
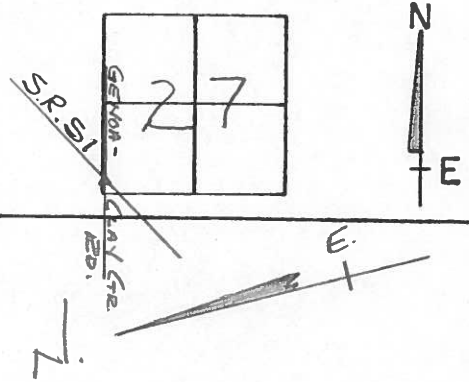
TYPE MONUMENT P.K. NAIL

ON SURFACE - ~~BELOW~~

LEFT- CL PAV'T. - RIGHT 6.8'

TO EDGE PAVEMENT

S.L.M. 207+50



PERSONNEL TITLE PERSONNEL TITLE

COUNTY Ottawa DATE 1-12-72

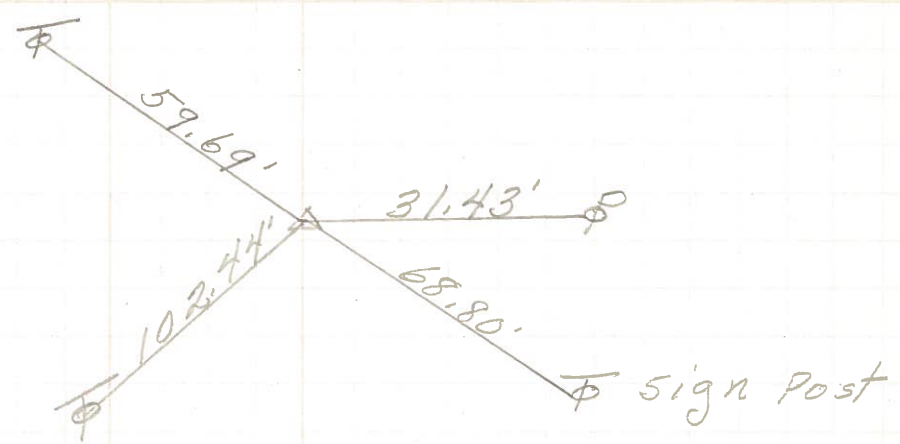
S. R. 51 WEATHER Fair

SEC. 27 & 28 TEMP. 40°

DESCRIPTION Clay Tap. LEFT CENTER LINE RIGHT JOB NO.

SEE NEW TIES

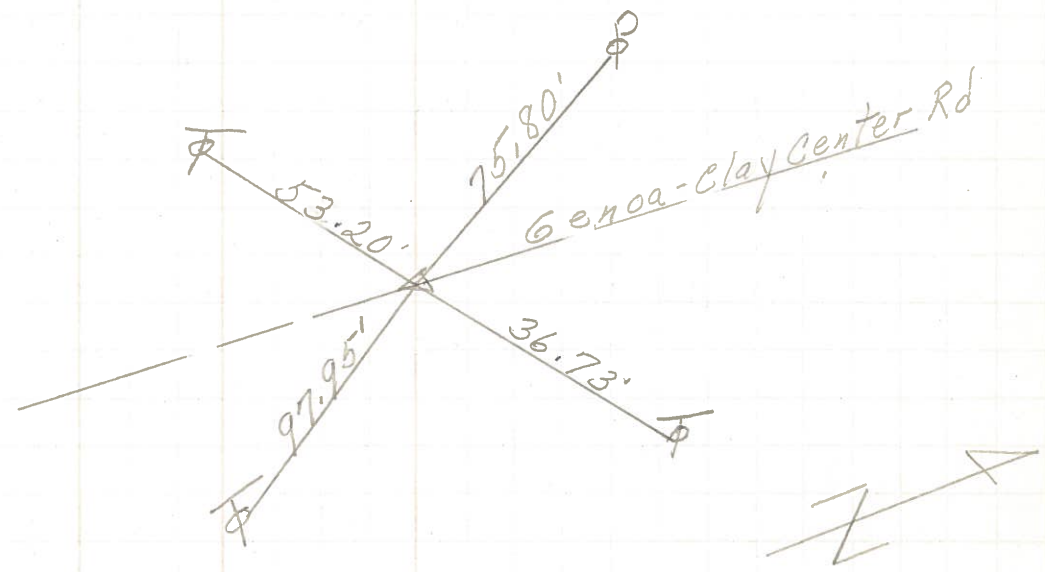
P.I.  
347+81.22  
R.R. spk.  
Rt. of  $\phi$   
 $\Delta = 0^\circ 52' Lt.$



33

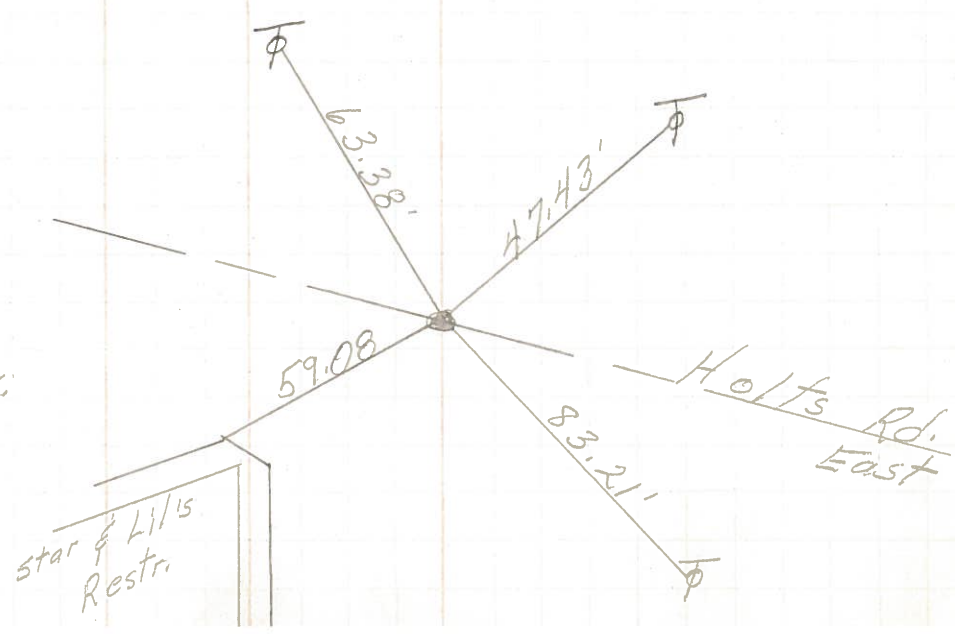
SEE NEW TIES

P.I.  
341+18.0  
R.R. spk.  
Rt. of  $\phi$   
 $\Delta = 0^\circ 26' Lt.$   
207+29.54



32

P.O.T.  
336+96.3  
Small R.R. spk.  
2' Rt. of  $\phi$   
211+48.70



31.

PERSONNEL TITLE PERSONNEL TITLE

COUNTY Ottawa DATE 6-20-68

Schneider  
Mosser

S. R. 51 WEATHER Fair

Barbour  
Redding

SEC Wood Co. Line-East TEMP. 75°

DESCRIPTION Ties for Control Points JOB NO. \_\_\_\_\_

LEFT CENTER LINE RIGHT

