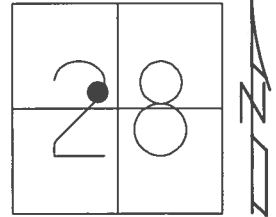


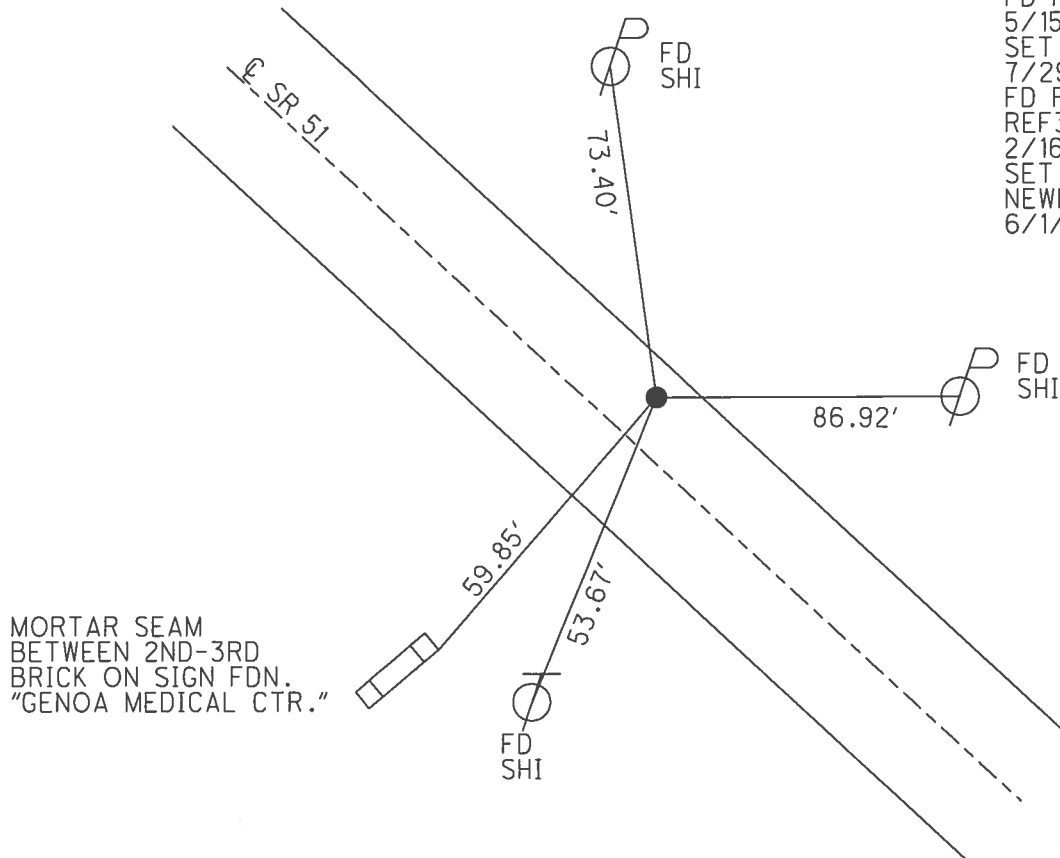
O.D.O.T. DISTRICT 2 SURVEY OFFICE (USE ONLY)

PERSONNEL \_\_\_\_\_ REFERENCE NO. 35 SHEET 12 OF 21  
 NOTES RHOADES DATE 4/5/16 ROUTE SR 51  
 H.C. FARKAS WEATHER CLOUDY COUNTY OTTAWA  
 R.C. HOMAN TEMP. 26° TOWNSHIP CLAY  
 \_\_\_\_\_ SECTION 28  
 \_\_\_\_\_ T 7 N R 13 E

TYPE MONUMENT P.K./WASHER  
 ON SURFACE - ~~BELOW~~ ON  
~~LEFT~~ - Q PAV'T - RIGHT 6.6'  
4.9' TO RT EDGE PAVEMENT  
 S.L.M. 385+20  
 Grid: Northing: 683286.675 Easting: 1730210.449



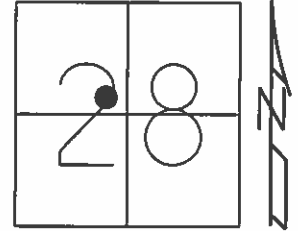
RECORD: P.I.  
 $\Delta = 0^{\circ}0'30''$  LT  
 384+40.1  
 FD R.R.SPIKE  
 SET P.K.NAIL  
 1/19/72  
 FD P.K.NAIL  
 5/15/02, MB  
 SET P.K./WASHER  
 7/29/02, MB  
 FD P.K./WASHER  
 REF35  
 2/16/16, JFO  
 SET MAG/WASHER  
 NEWREF35  
 6/1/17, JFO



O.D.O.T. DISTRICT 2 SURVEY OFFICE (USE ONLY)

PERSONNEL \_\_\_\_\_ REFERENCE NO. 35 SHEET 12 OF 21  
 NOTES MOSER DATE 5/15/02 ROUTE SR 51  
 H.C. BARNHISEL WEATHER SUNNY COUNTY OTTAWA  
 R.C. HOFFMAN TEMP. 70° TOWNSHIP CLAY  
LOEHRKE SECTION 28  
 T 7 N R 13 E

TYPE MONUMENT P.K.NAIL  
 ON SURFACE - ~~BELOW~~ ON \_\_\_\_\_  
~~LEFT~~ - CL PAV'T - RIGHT 6.6'  
4.9' TO RT EDGE PAVEMENT  
 S.L.M. 385+20

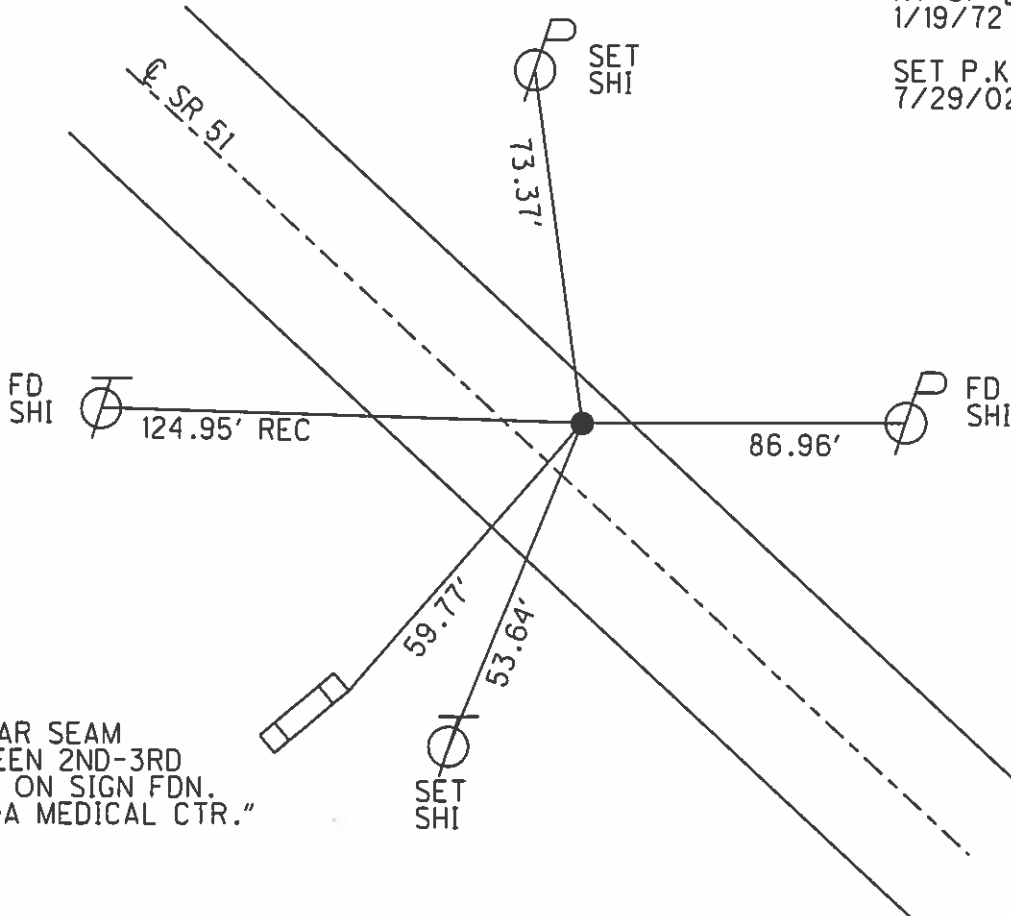


Grid: Northing: \_\_\_\_\_ Easting: \_\_\_\_\_

RECORD: P.I.  
 $\Delta = 00^\circ 00' 30''$  LT  
 384+40.1

FD R.R. SPIKE  
 RT OF CL  
 1/19/72

SET P.K./WASHER  
 7/29/02, MB



MORTAR SEAM  
 BETWEEN 2ND-3RD  
 BRICK ON SIGN FDN.  
 "GENOA MEDICAL CTR."

PERSONNEL TITLE PERSONNEL TITLE

COUNTY Ottawa DATE 1-19-72

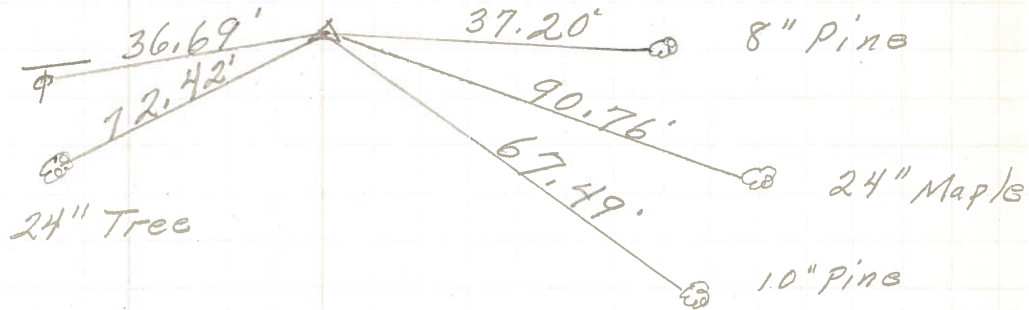
S. R. 51 WEATHER Fair

SEC. 28 TEMP. 40°

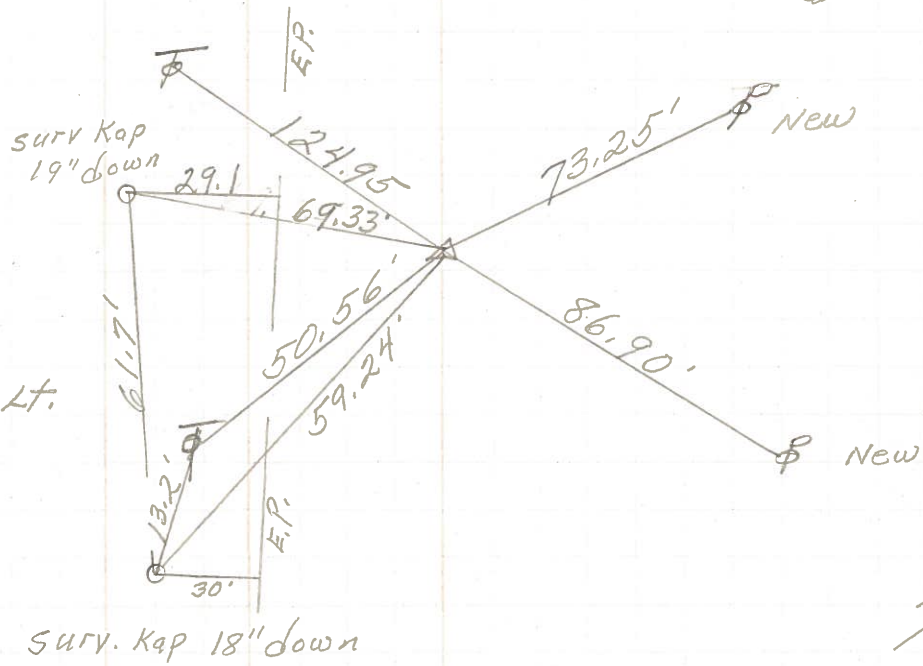
DESCRIPTION Clay Twp. JOB NO. \_\_\_\_\_

LEFT CENTER LINE RIGHT

P.I.  
406+37.55  
R.R. Spk.  
 $\Delta = 0^{\circ} 03' Lt.$   
**36**

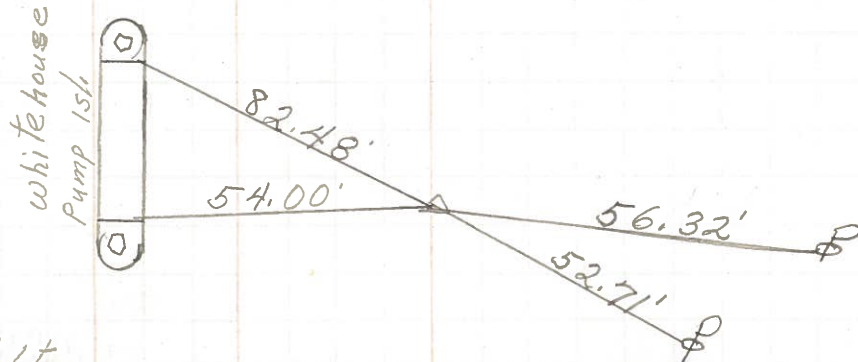


P.I.  
384+40.09  
R.R. Spk.  
Rt. of  $\angle$   
 $\Delta = 0^{\circ} 0' 30'' Lt.$   
**35**



SEE NEW TIES

P.I.  
371+12.47  
R.R. Spk.  
Rt. of  $\angle$   
 $\Delta = 0^{\circ} 0' 30'' Lt.$   
Good Ties set P.K. Nail  
**34.**



PERSONNEL TITLE PERSONNEL TITLE

COUNTY Ottawa DATE 6-20-68

Schneider \_\_\_\_\_

S. R. 51 WEATHER Fair

Mosser \_\_\_\_\_

Barbour \_\_\_\_\_

SEC. Wood Co. Line-East TEMP. 60°

Redding \_\_\_\_\_

DESCRIPTION Ties for Control Points JOB NO. \_\_\_\_\_

