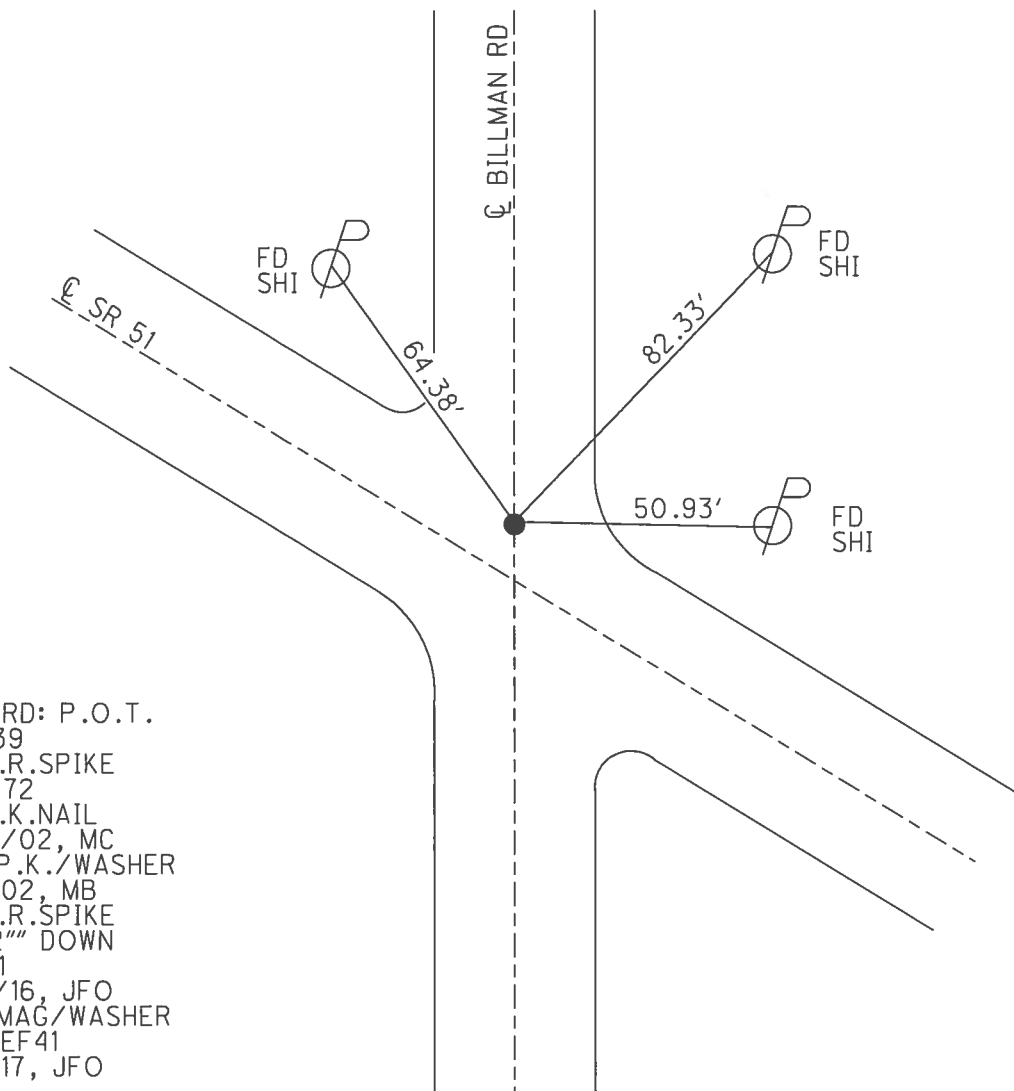
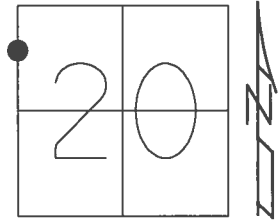


O.D.O.T. DISTRICT 2 SURVEY OFFICE (USE ONLY)

PERSONNEL \_\_\_\_\_ REFERENCE NO. 41 SHEET 18 OF 21  
NOTES RHOADES DATE 4/18/16 ROUTE SR 51  
H.C. O'DONNELL WEATHER SUNNY COUNTY OTTAWA  
R.C. RHOADES TEMP. 50° TOWNSHIP CLAY  
SECTION 20  
T 7 N R 13 E

TYPE MONUMENT R.R.SPIKE  
~~ON SURFACE~~ - BELOW 4 1/2"  
~~LEFT~~ - Q PAV'T - RIGHT 6.1', ON Q N.  
- TO - EDGE PAVEMENT  
S.L.M. 482+24  
Grid: Northing: 689783.011 Easting: 1723009.620

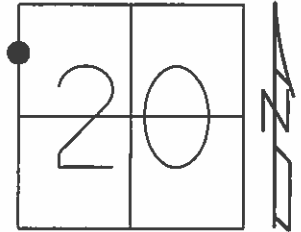


RECORD: P.O.T.  
481+39  
FD R.R.SPIKE  
1/19/72  
FD P.K.NAIL  
5/20/02, MC  
SET P.K./WASHER  
8/5/02, MB  
FD R.R.SPIKE  
4 1/2" DOWN  
REF41  
4/18/16, JFO  
SET MAG/WASHER  
NEWREF41  
6/2/17, JFO

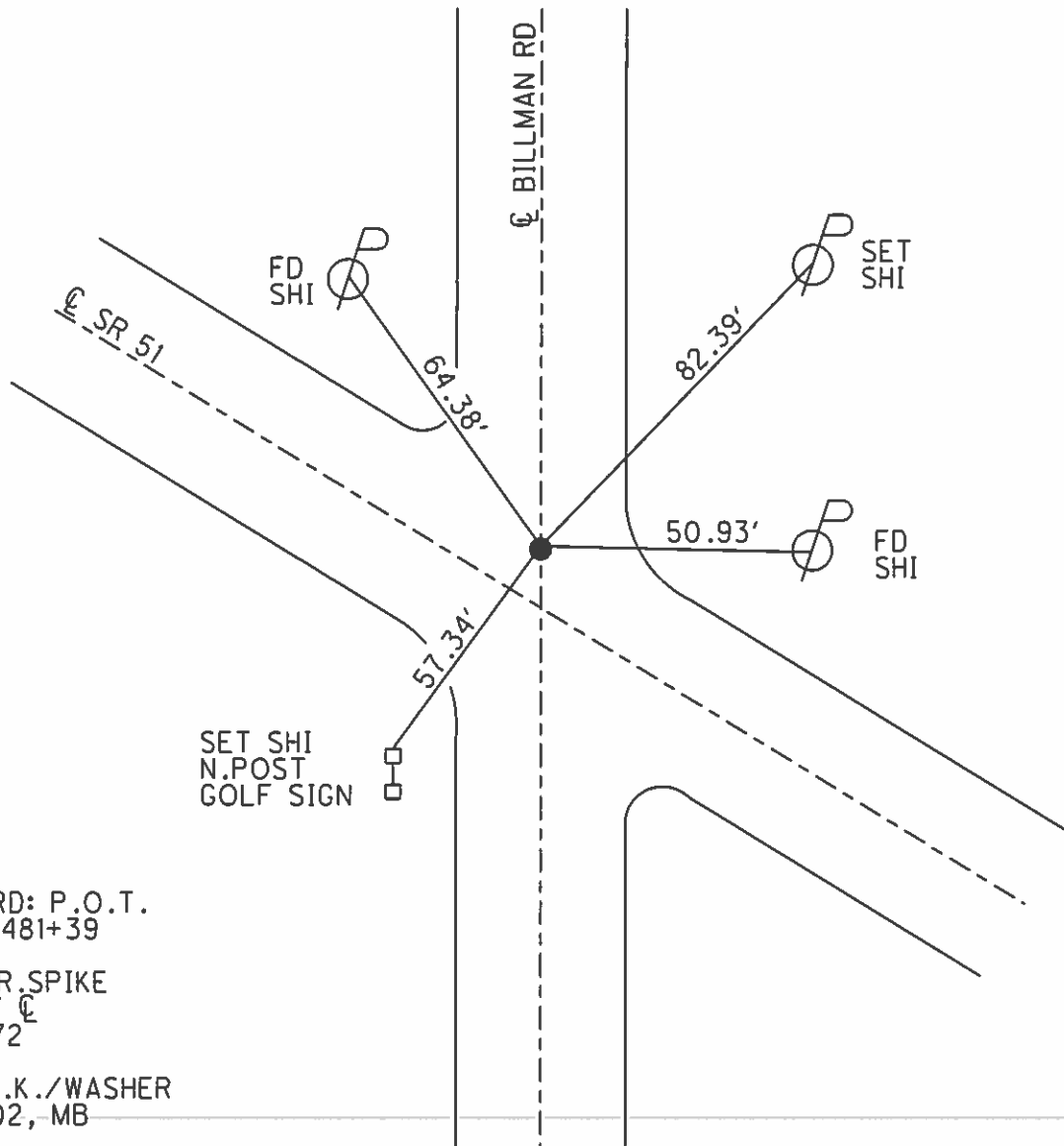
O.D.O.T. DISTRICT 2 SURVEY OFFICE (USE ONLY)

PERSONNEL \_\_\_\_\_ REFERENCE NO. 41 SHEET 18 OF 21  
 NOTES BARNHISEL DATE 5/20/02 ROUTE SR 51  
 H.C. CANTERBURY WEATHER CLOUDY COUNTY OTTAWA  
 R.C. C.B. TEMP. 50° TOWNSHIP CLAY  
B.M. SECTION 20  
 T 7 N R 13 E

TYPE MONUMENT P.K. NAIL  
~~ON SURFACE~~ - BELOW 4"  
~~LEFT~~ - ☉ PAV'T - RIGHT 6.1', ON ☉ N.  
- TO - EDGE PAVEMENT  
 S.L.M. 482+24



Grid: Northing: - Easting: -



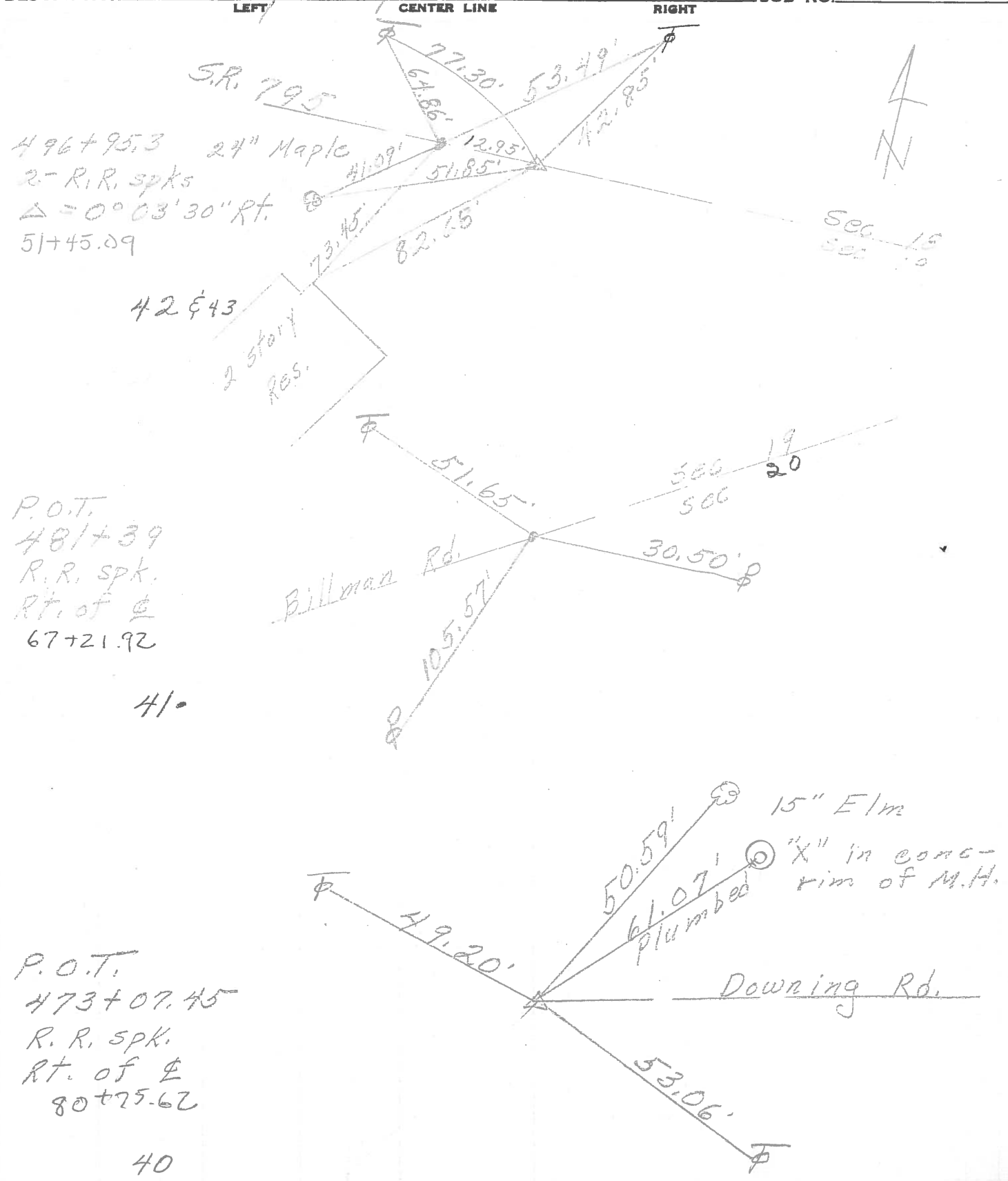
RECORD: P.O.T.  
 PLAN 481+39

FD R.R. SPIKE  
 RT OF ☉  
 1/19/72

SET P.K./WASHER  
 8/5/02, MB

PERSONNEL	TITLE	PERSONNEL	TITLE	COUNTY	DATE
				Ottawa	1-19-72
				S. R. 51	WEATHER Fair
				SEC. 18 & 19	TEMP. 40°

DESCRIPTION Clay Twp. JOB NO. \_\_\_\_\_



PERSONNEL	TITLE	PERSONNEL	TITLE
Schneider		Potts	
Mosser			
Barbour			
Redding			

COUNTY Ottawa DATE 6-14-68  
 S. R. 51 WEATHER Fair - windy  
 SEC. Wood Co. Line East TEMP. 75°

DESCRIPTION Tie for Control Points JOB NO. \_\_\_\_\_

