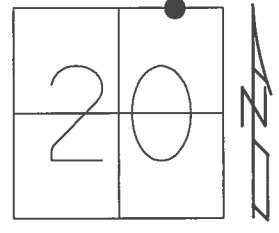


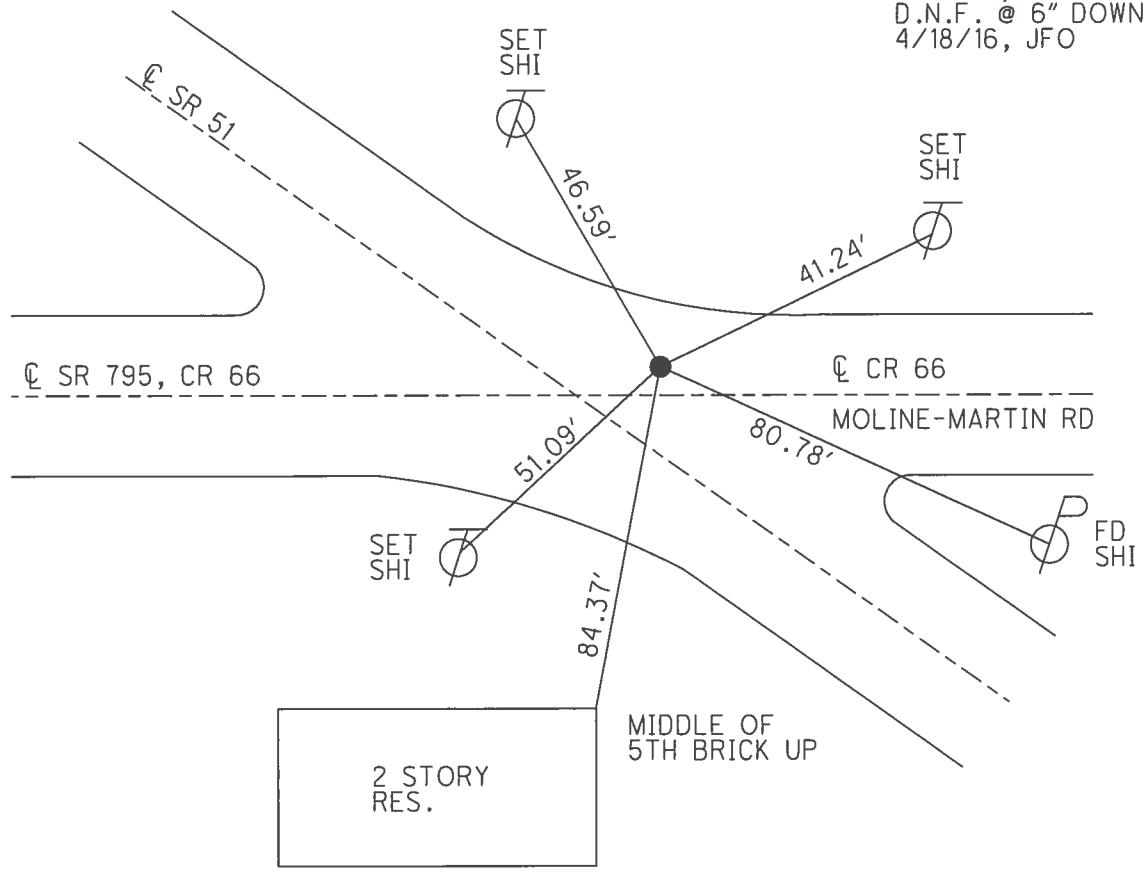
O.D.O.T. DISTRICT 2 SURVEY OFFICE (USE ONLY)

PERSONNEL	REFERENCE NO.	42	SHEET	19	OF	21
NOTES	BARNHISEL	DATE	5/20/02	ROUTE	SR 51	
H.C.	CANTERBURY	WEATHER	CLOUDY	COUNTY	OTTAWA	
R.C.	C.B.	TEMP.	50°	TOWNSHIP	CLAY	
	B.M.			SECTION	20	
				T	7	N
				R	13	E

TYPE MONUMENT P.K.NAIL  
 ON SURFACE - ~~BELOW~~ ON  
~~LEFT~~ -  $\text{C}$  PAV'T - RIGHT 13.6', 3' N. OF  $\text{C}$  SR 795  
- TO - EDGE PAVEMENT  
 S.L.M. 498+15  
 Grid: Northing: - Easting: -



RECORD: P.I.  
 $\Delta = 00^\circ 03' 30''$  RT  
 496+95.3  
 FD R.R.SPIKE  
 1/19/72  
 SET P.K./WASHER  
 8/5/02, MB  
 D.N.F. @ 6" DOWN  
 4/18/16, JFO



O.D.O.T. DISTRICT 2 SURVEY OFFICE (USE ONLY)

PERSONNEL \_\_\_\_\_ REFERENCE NO. 42 SHEET 19 OF 21  
 NOTES BARNHISEL DATE 5/20/02 ROUTE SR 51  
 H.C. CANTERBURY WEATHER CLOUDY COUNTY OTTAWA  
 R.C. C.B. TEMP. 50° TOWNSHIP CLAY  
 \_\_\_\_\_ B.M. \_\_\_\_\_ SECTION 20  
 \_\_\_\_\_ T 7 N R 13 E

TYPE MONUMENT P.K.NAIL

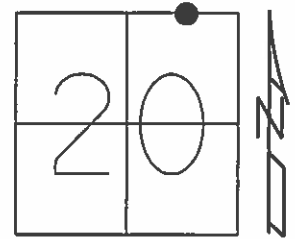
ON SURFACE - ~~BELOW~~ ON \_\_\_\_\_

~~LEFT~~ - ☉ PAV'T - RIGHT 13.6', 3' N. OF ☉ SR 795

- TO - EDGE PAVEMENT

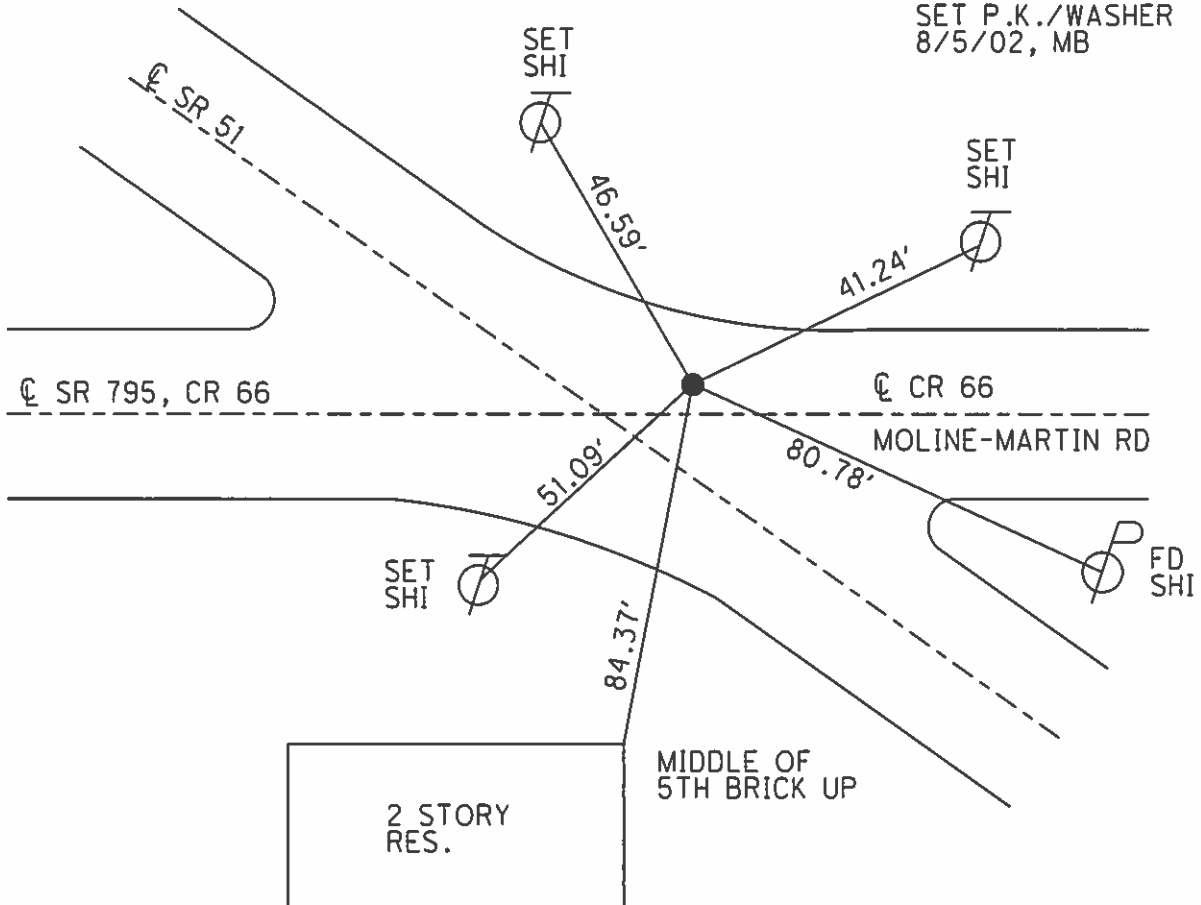
S.L.M. 498+15

Grid: Northing: - Easting: -

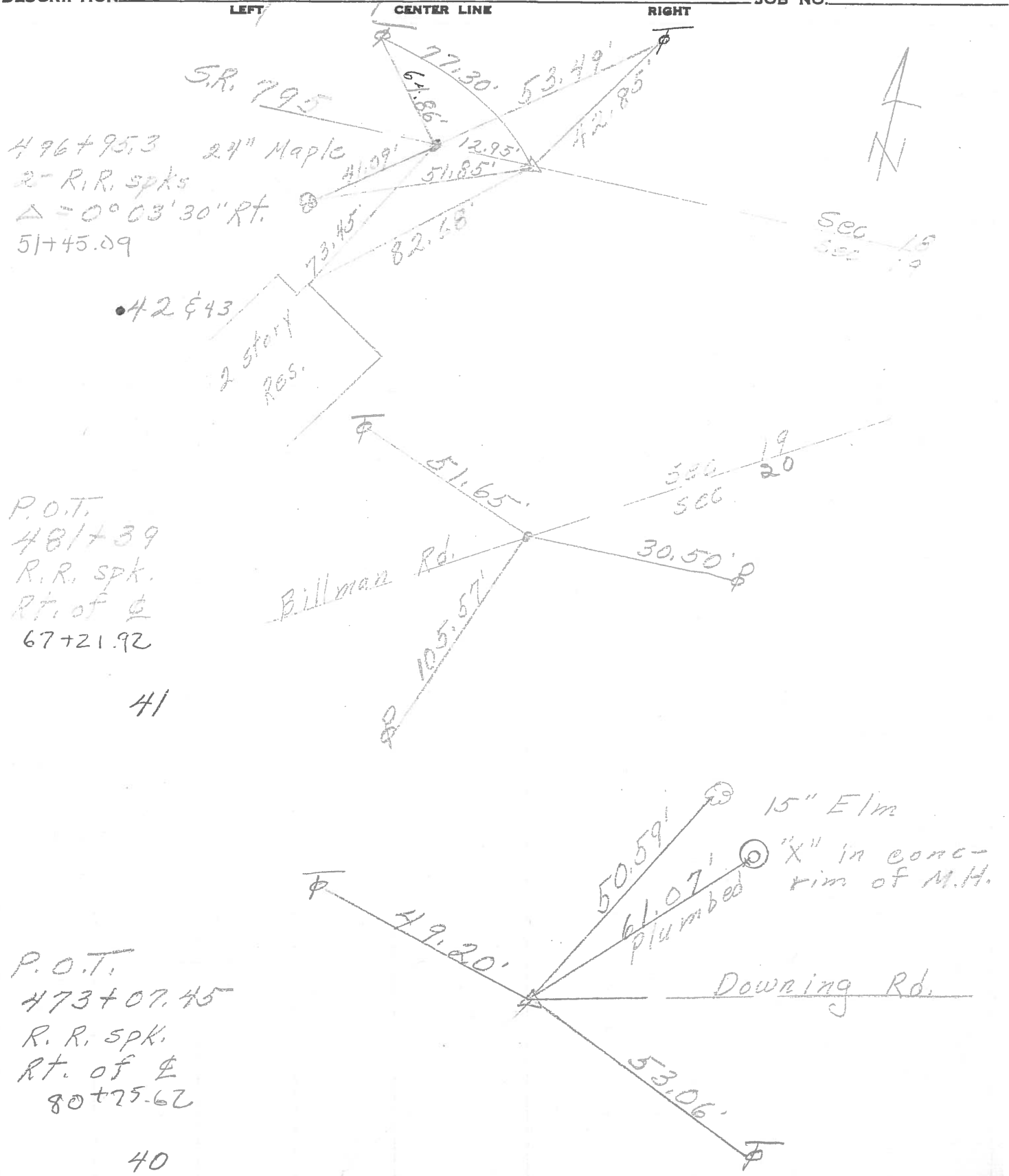


RECORD: P.I.  
 $\Delta = 00^\circ 03' 30''$  RT  
 496+95.3  
 FD R.R. SPIKE  
 1/19/72

SET P.K./WASHER  
 8/5/02, MB



PERSONNEL	TITLE	PERSONNEL	TITLE
COUNTY <u>Ottawa</u> DATE <u>1-19-72</u>			
S. R. <u>51</u> WEATHER <u>Fair</u>			
SEC. <u>18 E 19</u> TEMP. <u>40°</u>			
DESCRIPTION <u>Clay Twp.</u>			JOB NO.



496+95.3 24" Maple  
 2- R.R. spks  
 Δ = 0° 03' 30" Rt.  
 51+45.09

P.O.T.  
 481+39  
 R.R. spk.  
 Rt. of E  
 67+21.92

41

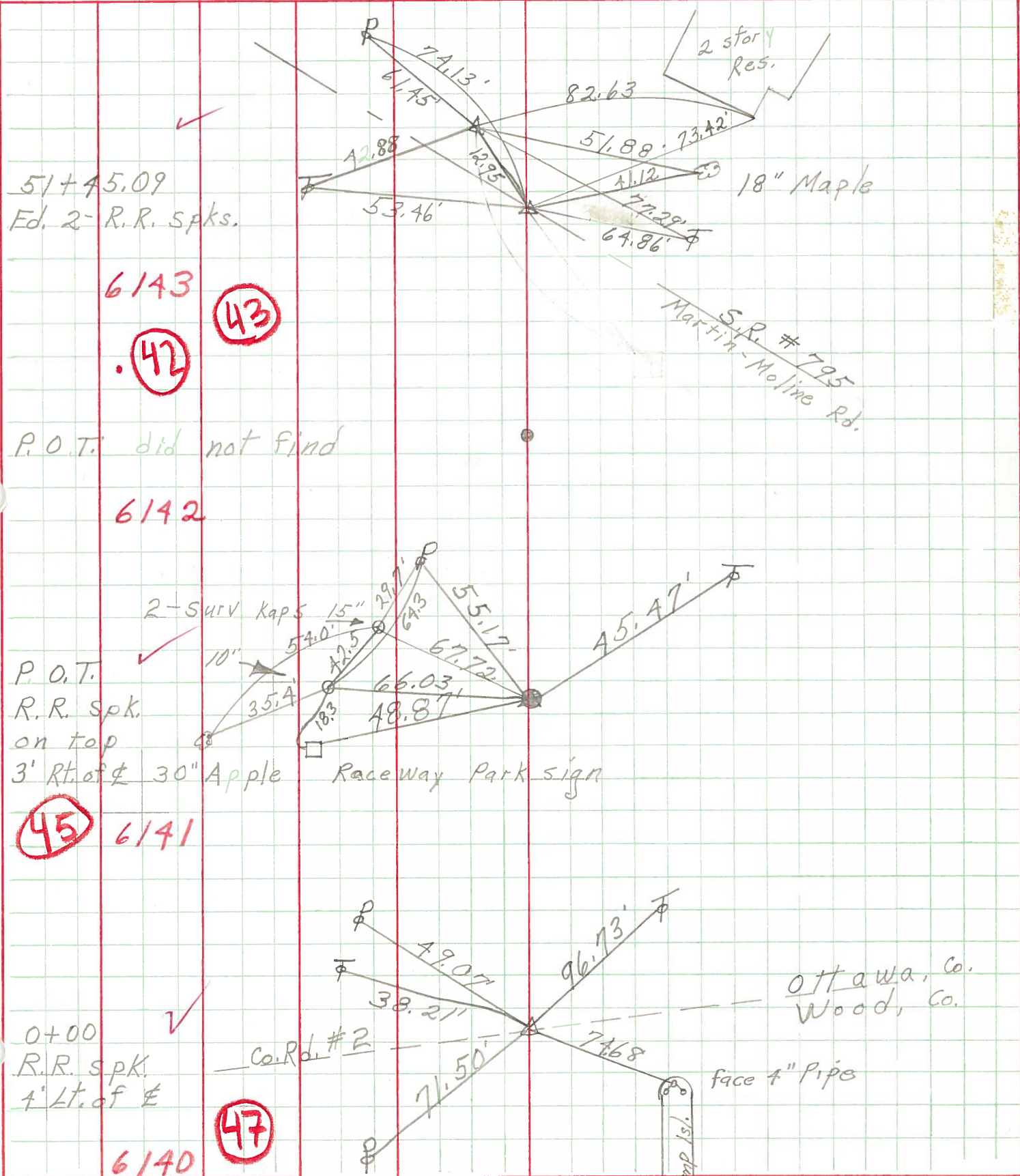
P.O.T.  
 473+07.45  
 R. R. spk.  
 Rt. of E  
 80+75.62

40

PERSONNEL TITLE PERSONNEL TITLE  
 Schneider \_\_\_\_\_ Potts \_\_\_\_\_  
 Mosser \_\_\_\_\_  
 Barbour \_\_\_\_\_  
 Redding \_\_\_\_\_

COUNTY Ottawa DATE 6-14-68  
 S. R. 51 WEATHER Fair-windy  
 SEC. Wood Co. Line - East TEMP. 70°

DESCRIPTION Ties for Control Points JOB NO. \_\_\_\_\_



51+45.09  
 Ed. 2- R.R. Spks.

6143  
 (42)  
 (43)

P.O.T. did not find

6142

P.O.T. ✓  
 R.R. Spk.  
 on top  
 3' Rt. of  $\pm$  30" Apple

(45) 6141

0+00  
 R.R. Spk.  
 4' Lt. of  $\pm$

6140 (47)

Pump Isl.

Ottawa, Co.  
 Wood, Co.