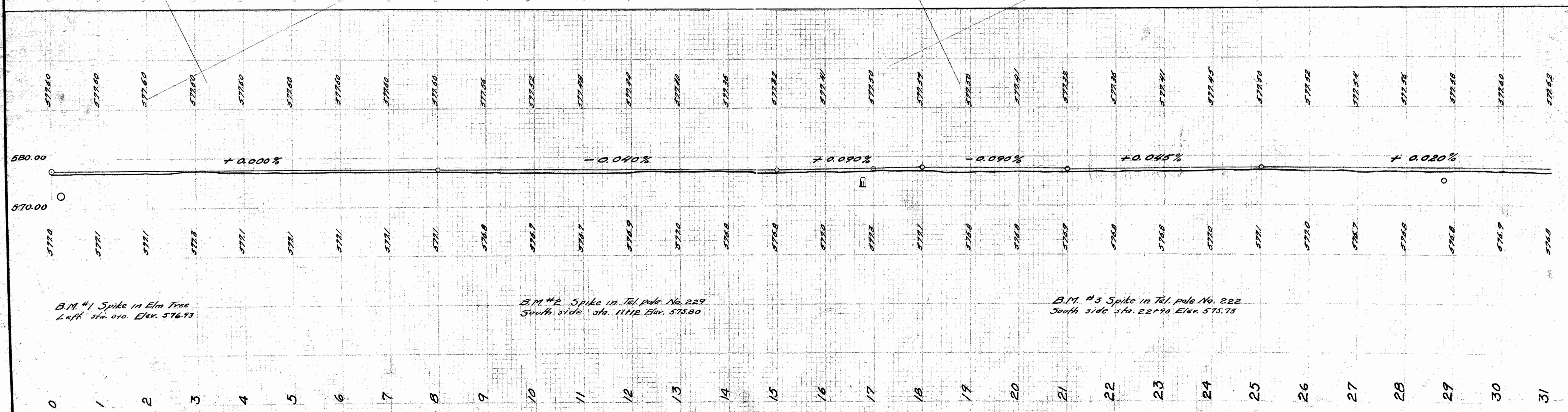
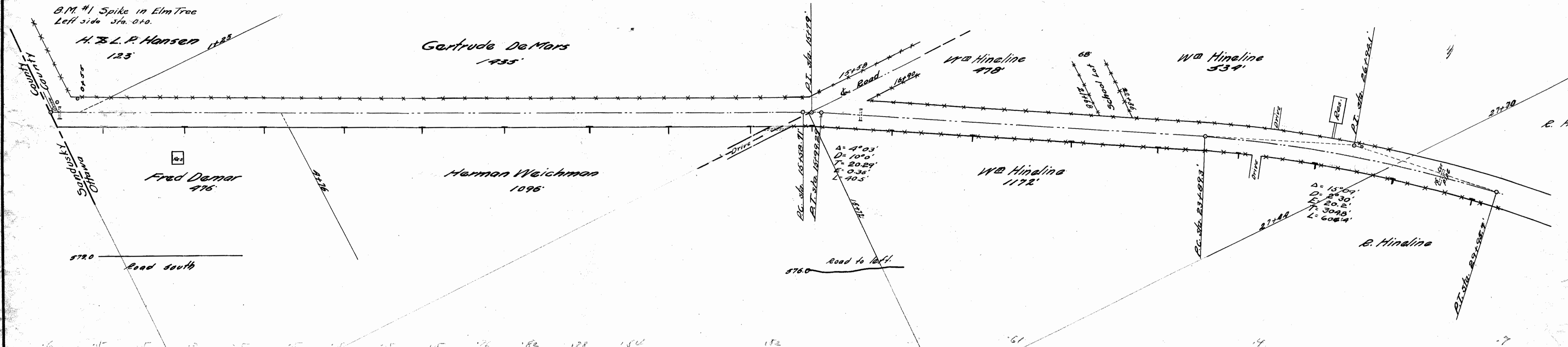
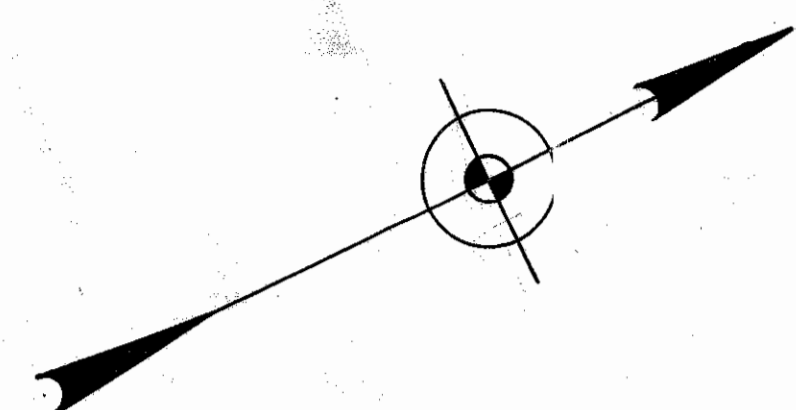


I.C.H. No. 277 Sec. E
Ottawa County

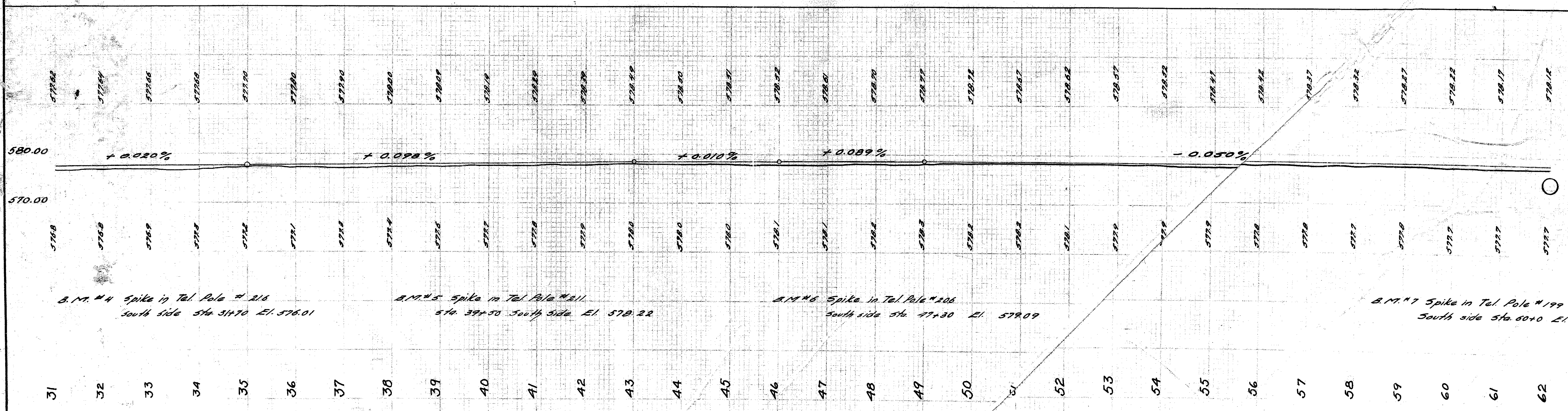
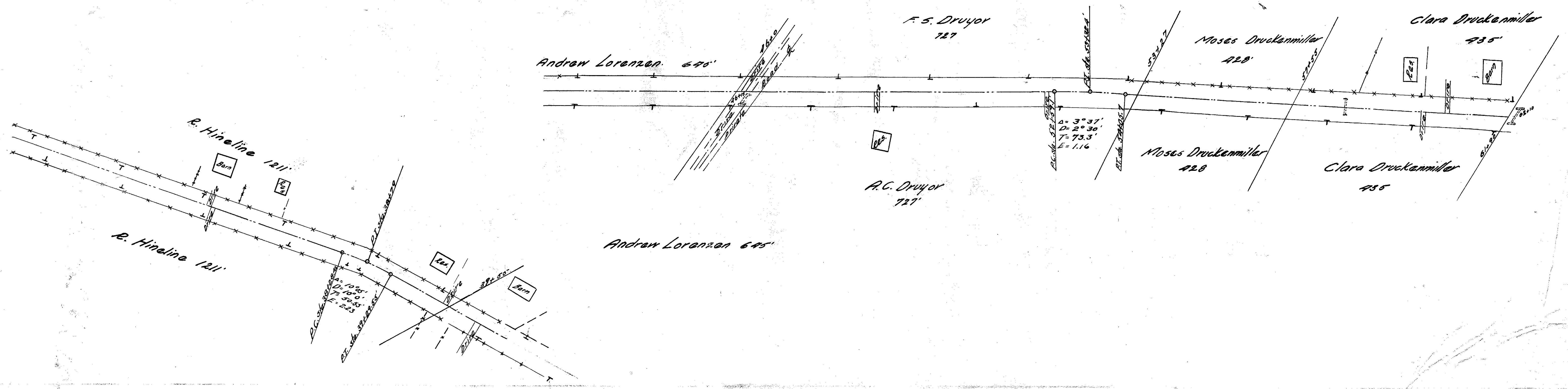


B.M. #1 Spike in Elm Tree
Left side sta. 0+0. Elev. 576.73

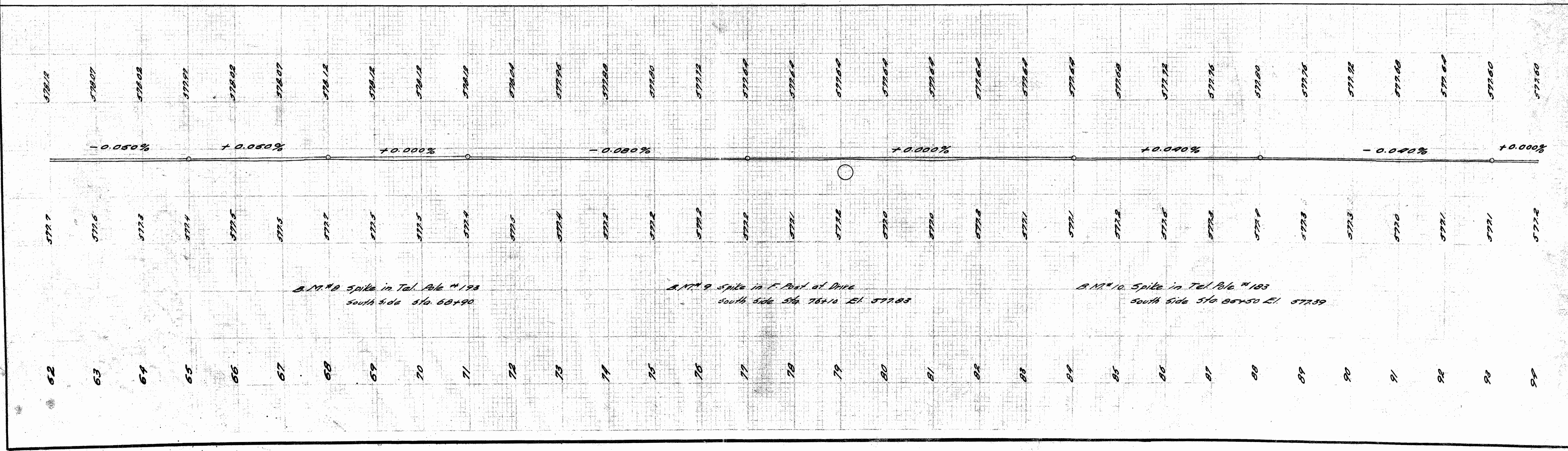
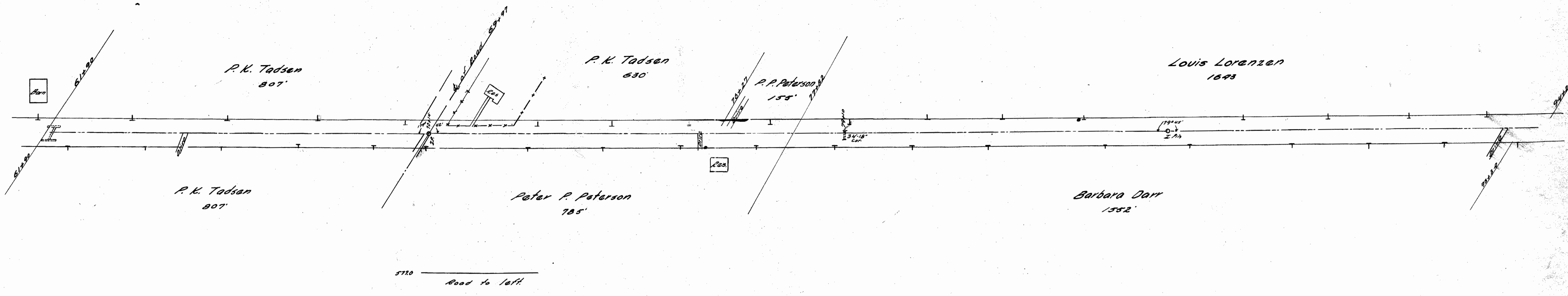
B.M. #2 Spike in Tel. pole No. 229
South side sta. 11+12 Elev. 575.80

B.M. #3 Spike in Tel. pole No. 222
South side sta. 22+90 Elev. 575.73

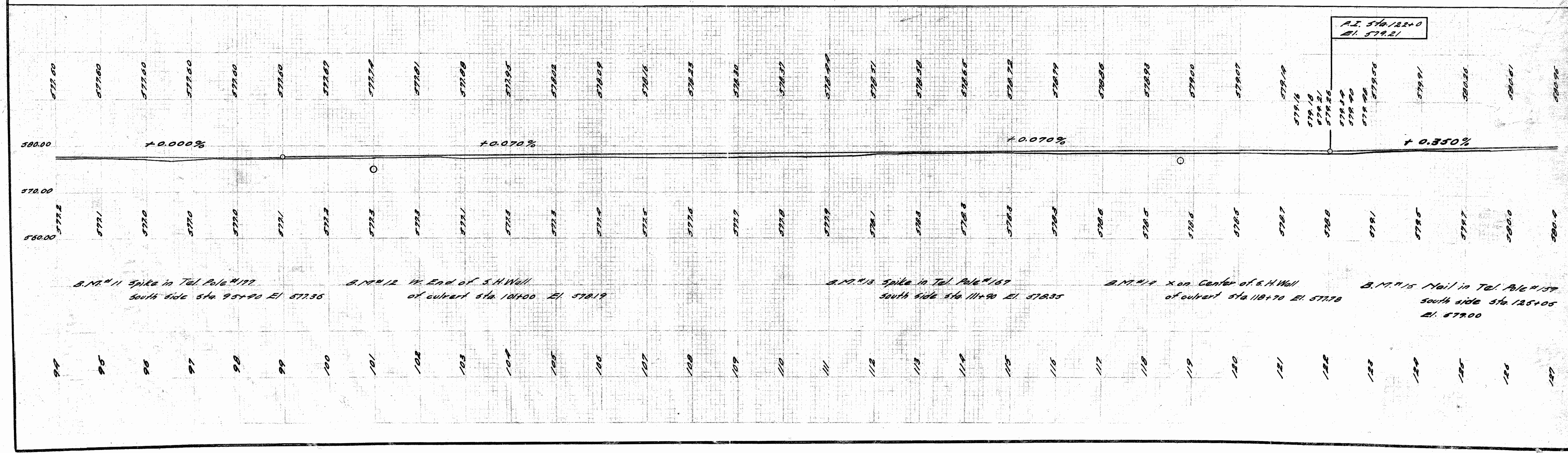
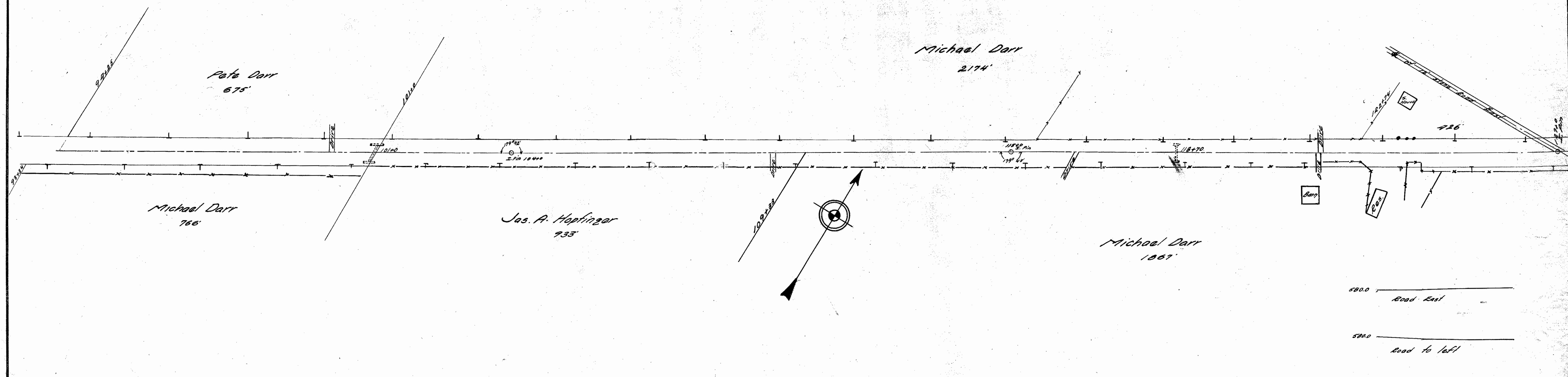
I.C.H. No. 277 Sec. 'E'
Otawa County



I. C. H. No 277 500' E
Ottawa County



I. C. H. No. 277 Sec. "E"
Ottawa County



B.M. #11 Spike in Tel. Pole #172
South side Sta. 95+40 El. 577.35

B.M. #12 14' End of S.H. Wall
of culvert Sta. 104+00 El. 578.19

B.M. #13 Spike in Tel. Pole #187
South side Sta. 114+90 El. 578.35

B.M. #14 x on Center of S.H. Wall
of culvert Sta. 118+70 El. 577.78

B.M. #15 Nail in Tel. Pole #137
South side Sta. 125+05
El. 579.00