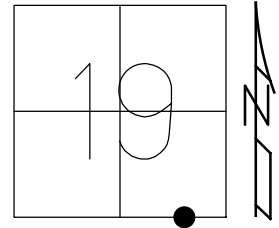


O.D.O.T. DISTRICT 2 SURVEY OFFICE (USE ONLY)

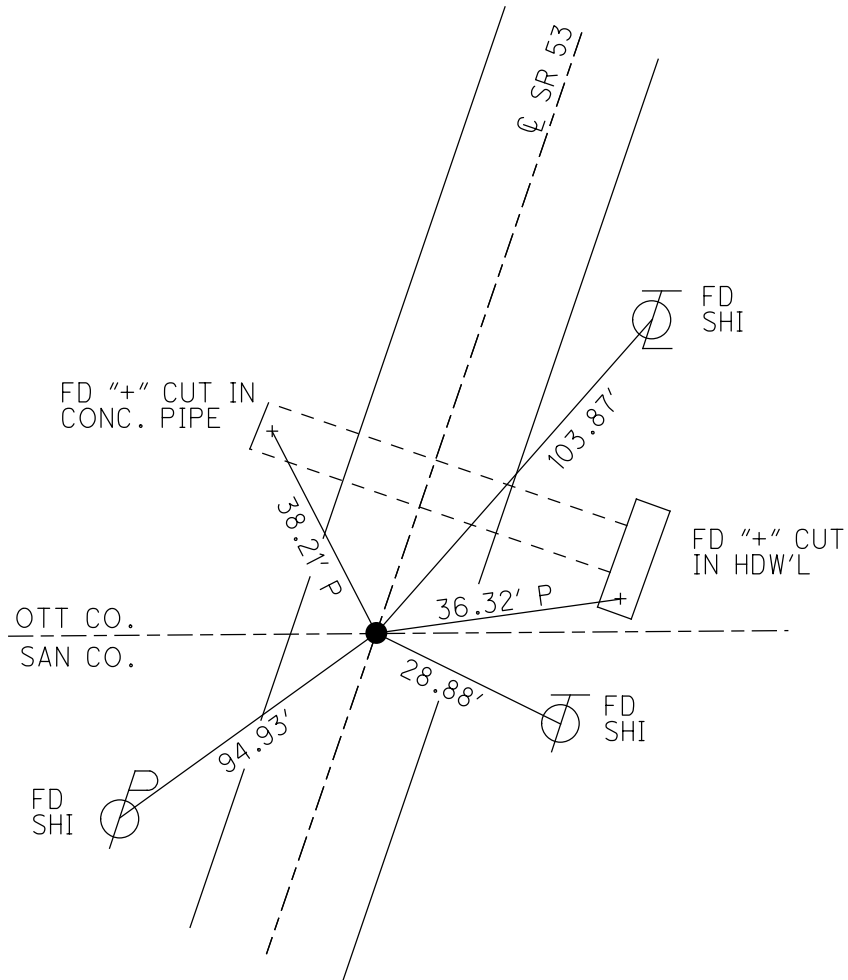
PERSONNEL _____ REFERENCE NO. 1 SHEET 1 OF 20
 NOTES LEU DATE 3/23/17 ROUTE SR 53
 H.C. HOMAN WEATHER SUNNY COUNTY OTTAWA
 R.C. LEU TEMP. 30° TOWNSHIP BAY
 SECTION 19
 DWG BY MILLER PID 92368 T 6 N R 16 E

TYPE MONUMENT P.K./WASHER
 ON SURFACE - ~~BELOW~~ ON _____
 OFFSET \odot PAVEMENT ON _____ LT : RT
11' TO RT EDGE PAVEMENT
 STATION: 0+00

HORZ. DATUM: NAD83 (2011) GEOID: 2012A
 GRID: NORTHING: 652879.790 EASTING: 1817266.110



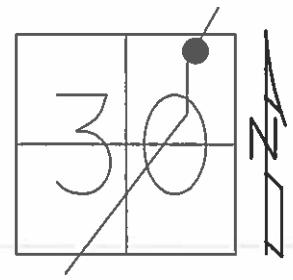
RECORD: P.I.
 STA 0+00
 $\Delta=00^{\circ}36'$ LT REC
 SURVEY & CONST.
 SET PK/WASHER
 ATOP R.R. SPIKE
 12-5-84
 SET PK/WASHER
 8-5-93, JLR
 FD PK/WASHER
 5-30-00, BC
 SET PK/WASHER
 7-26-00, SAH
 FD PK/WASHER
 REF1
 6-22-15, JFO
 FD PK/WASHER
 3-23-17, DCH
 SET MAG/WASHER
 REF1
 5-8-18, JLL



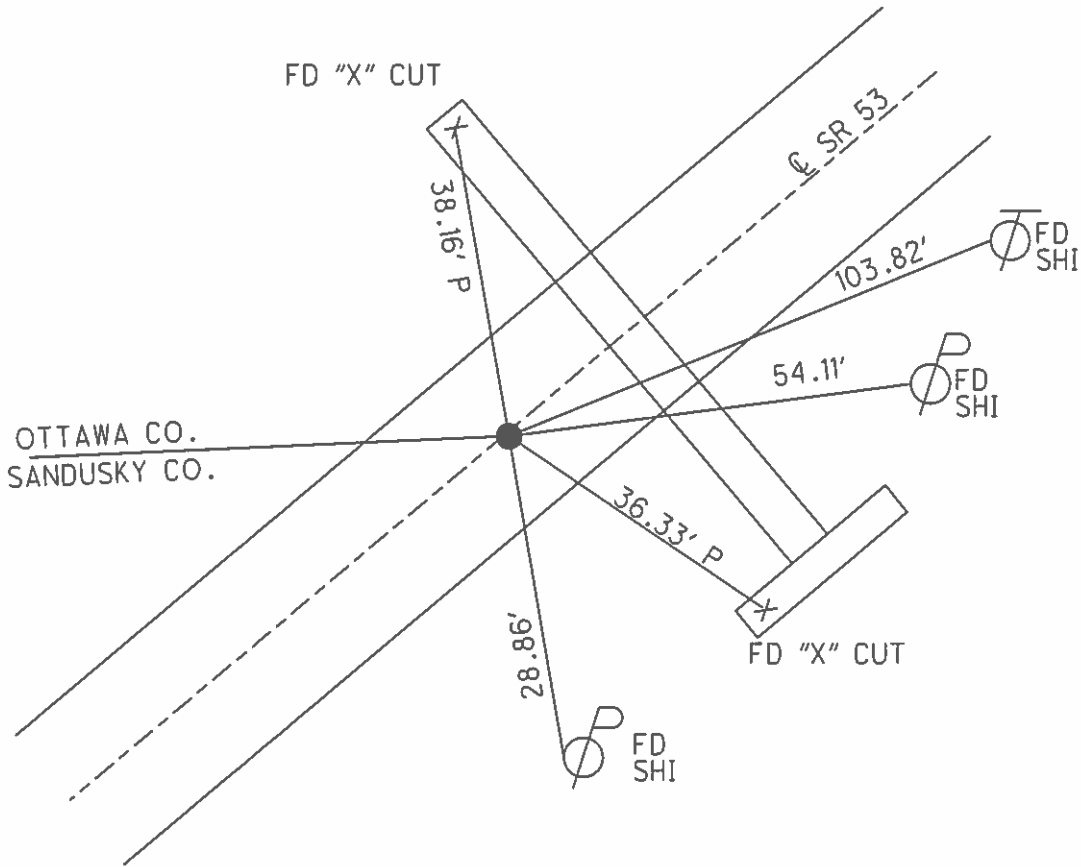
O.D.O.T. DISTRICT 2 SURVEY OFFICE (USE ONLY)

| | | | | | | |
|-----------|---------------|---------|---------|----------|----------|----|
| PERSONNEL | REFERENCE NO. | 40 | SHEET | 19 | OF | 19 |
| NOTES | HOMAN | DATE | 3/27/03 | ROUTE | SR 53 | |
| H.C. | BARNHISEL | WEATHER | CLOUDY | COUNTY | SANDUSKY | |
| R.C. | GLASS | TEMP. | 50° | TOWNSHIP | RICE | |
| | RYALL | | | SECTION | 30 | |
| | | | | T | 5 | N |
| | | | | R | 16 | E |

TYPE MONUMENT P.K. NAIL/WASHER
 ON SURFACE - ~~BELOW~~ ON
~~LEFT~~ - Q PAV'T - ~~RIGHT~~ ON
12.4' TO LT EDGE PAVEMENT
 S.L.M. 945+19
 Grid: Northing: _____ Easting: _____



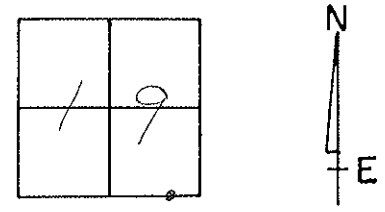
RECORD:
 P.I. SURV & CONST
 $\Delta = 00^\circ 36' \text{ LT.}$
 819+87.42
 NOT COVERED
 6/02/03, MDB



O.D.O.T. DISTRICT 2 SURVEY OFFICE

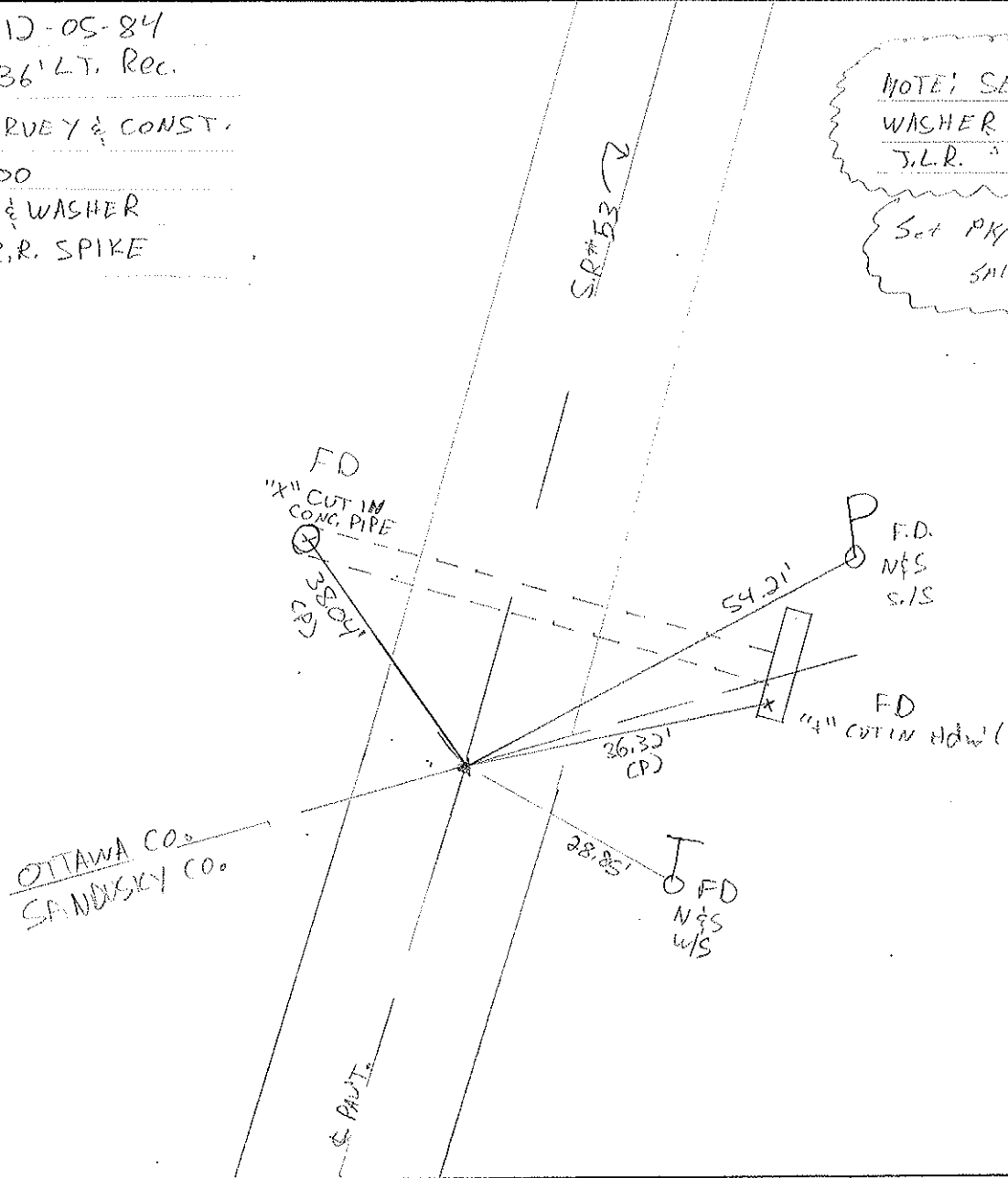
PERSONNEL _____ REFERENCE NO. 1 SHEET 1 OF 17
 NOTES Cordes
 H.C. Cordes DATE 5/30/00 ROUTE #53
 R.C. Roucos WEATHER Cloudy COUNTY OTTAWA
 _____ TEMP. 75° TOWNSHIP RAY
 _____ SECTION 19
 _____ T.G. N.R. 16 E

TYPE MONUMENT Fd. P.K. & WASHER
 ON SURFACE - ~~BELOW~~ ON SURFACE
 LEFT- C PAV'T. - RIGHT ON C PAV'T
11' TO RT. EDGE PAVEMENT
 S.L.M. 0+00



Record: 10-05-84
 $\Delta = 00^{\circ}36'LT$, Rec.
 P.I. SURVEY & CONST.
 STA. 0+00
 SET PK & WASHER
 ATOP R.R. SPIKE

NOTE: SET PK &
 WASHER 8-05-1993
 J.L.R.
 Set PK/W
 5/11/7-26-00



OTTAWA CO.
 SANDUSKY CO.

O.D.O.T. DISTRICT 2 SURVEY OFFICE

PERSONNEL

REFERENCE NO. 0

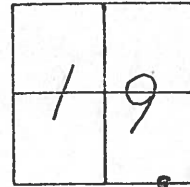
SHEET 1 OF 17

NOTES Cheney
 H.C. RIPPLE
 R.C. BARBOUR
GeyMAN

DATE 6-21-1993
 WEATHER Cloudy
 TEMP. 75°

ROUTE # 53
 COUNTY OTTAWA
 TOWNSHIP BAY
 SECTION 19
T 6 N R 16 E

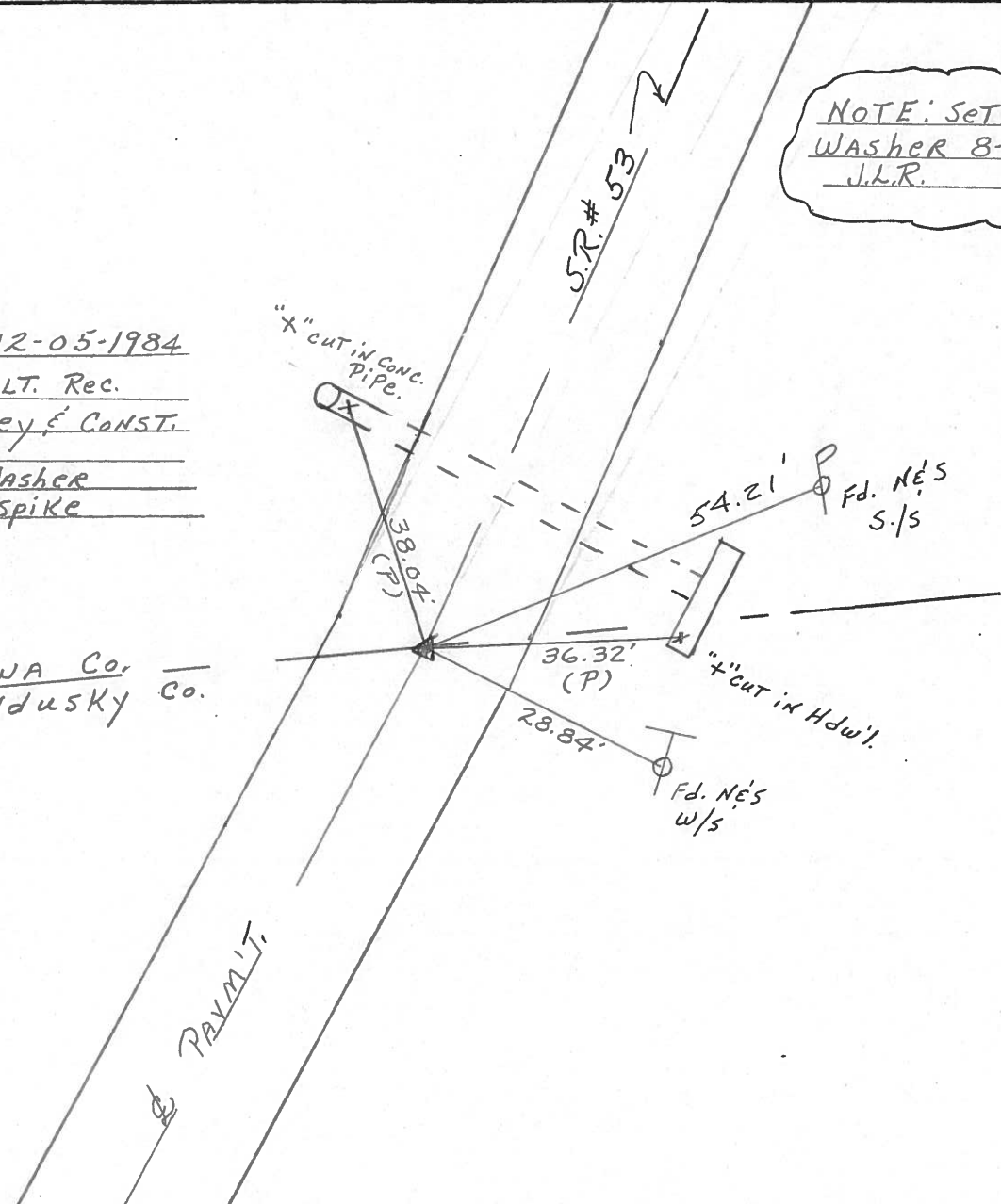
TYPE MONUMENT Fd. P.K. & washer
 ON SURFACE - ~~BELOW~~ ON SURFACE
~~LEFT - & PAV'T. - RIGHT~~ ON & PAV't.
11' TORT. EDGE PAVEMENT
 S.L.M. 0+00



NOTE: Set P.K. & Washer 8-05-1993
 J.L.R.

Record: 12-05-1984
A = 00° 36' LT. Rec.
P.I. Survey & Const.
STA. 0+00
Set P.K. & Washer
Atop R.R. Spike

OTTAWA Co.
SANDUSKY Co.



Resurfaced 1993

O.D.O.T. DISTRICT 2 SURVEY OFFICE

PERSONNEL

REFERENCE NO. 1

SHEET 1 OF

NOTES Cronin

H.C. Ripple

R.C. Barbour

Geyman

DATE 12/05/84

WEATHER overcast

TEMP. 30°

ROUTE #53

COUNTY Ottawa

TOWNSHIP Bay

SECTION 19

T. 6 N. R. 16 E

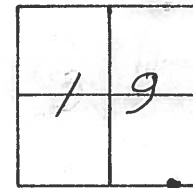
TYPE MONUMENT R.R spike

ON SURFACE - BELOW ±

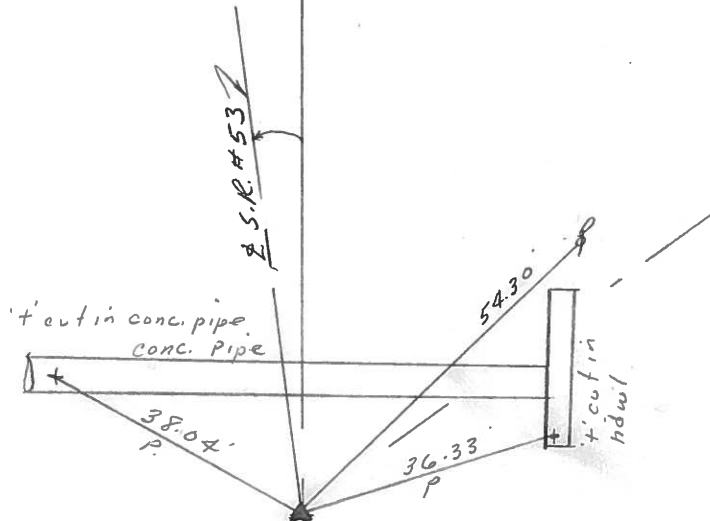
LEFT - ± PAV'T. - RIGHT

 TO EDGE PAVEMENT

S.L.M.



0



A = 00°36' Lt. Rec.

P.I. Survey & Const.

0+00

set P.K. & washer atop

R.R spike

Ottawa Co.
Sandusky Co.

| PERSONNEL | TITLE | PERSONNEL | TITLE | COUNTY | DATE | WEATHER | TEMP. |
|-----------|-------|-----------|-------|--------------|---------|---------|--------|
| Schneider | | Vinson | | Ottawa | 4-12-72 | Cloudy | 30 55° |
| Mosser | | | | S. R. 53 | | | |
| Barbour | | | | SEC. 19 & 21 | | | |
| Geyman | | | | | | | |

DESCRIPTION Bay Twp. LEFT CENTER LINE RIGHT JOB NO.

4/2/84
 P.I. & survey
 27+04.08
 $\Delta = 15^\circ 19' \text{ Rt.}$
 1/2" iron rod
 3" below surface

2 (3)

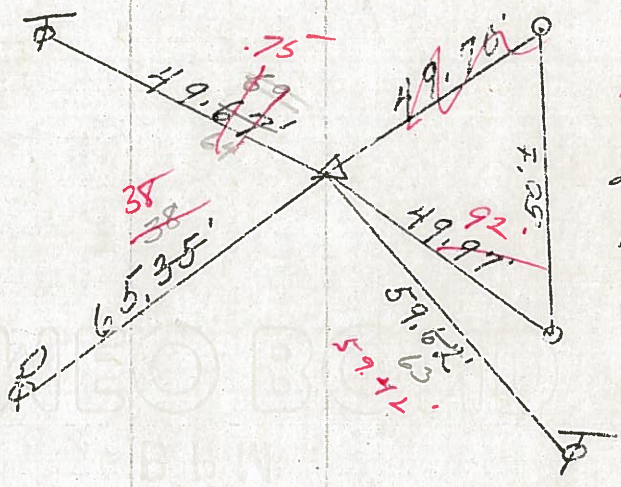
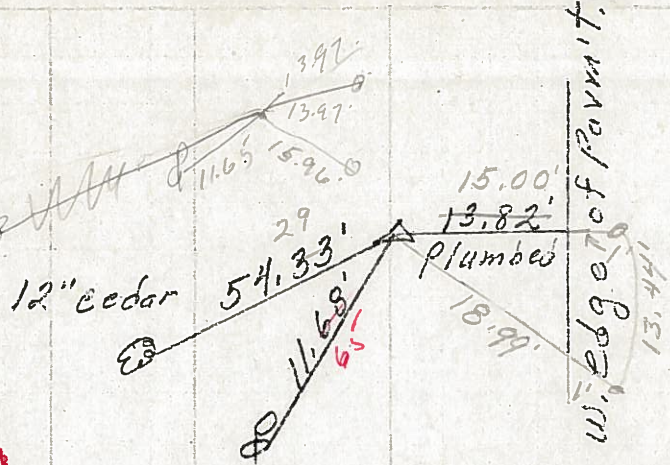
Reset P.K. Nails
 6-21-76 washers

P.I. & survey
 15+99.74
 R.R. spk.

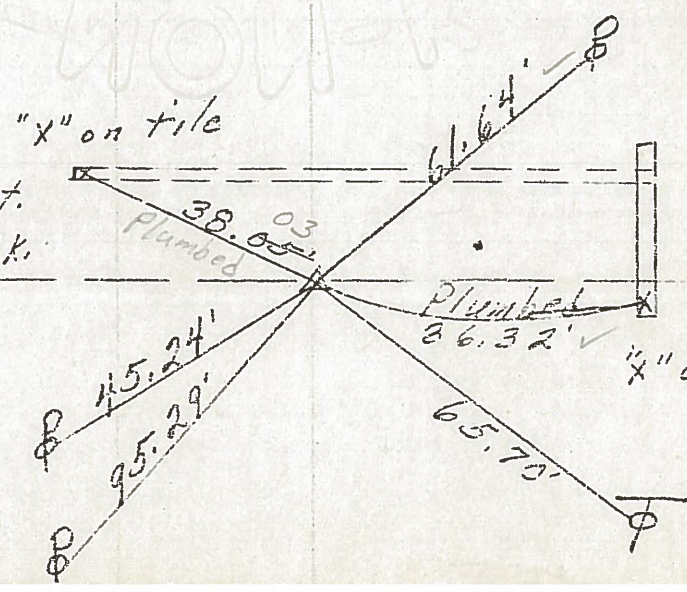
1 (2)

P.I. of survey & const.
 0+00 = 819+87.42 BK.
 $\Delta = 0^\circ 36' \text{ Lt.}$
 R.R. spk.

0 (1)



4/2/84
 sunny - 46°
 2-conc. Mem. with
 iron rods in center



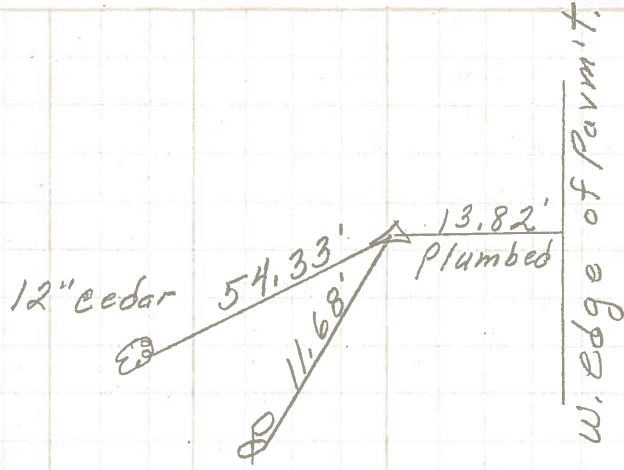
Ottawa, Co.
 Sandusky, Co.
 "x" on Hdah.

| PERSONNEL | TITLE | PERSONNEL | TITLE | COUNTY | DATE | S. R. | WEATHER | TEMP. |
|-----------|-------|-----------|-------|--------|---------|-------|---------|-------|
| Schneider | | Vinson | | Ottawa | 4-12-72 | 53 | Cloudy | 55° |
| Mosser | | | | | | | | |
| Barbour | | | | | | | | |
| Geyman | | | | | | | | |

DESCRIPTION Bay Twp. LEFT CENTER LINE RIGHT JOB NO.

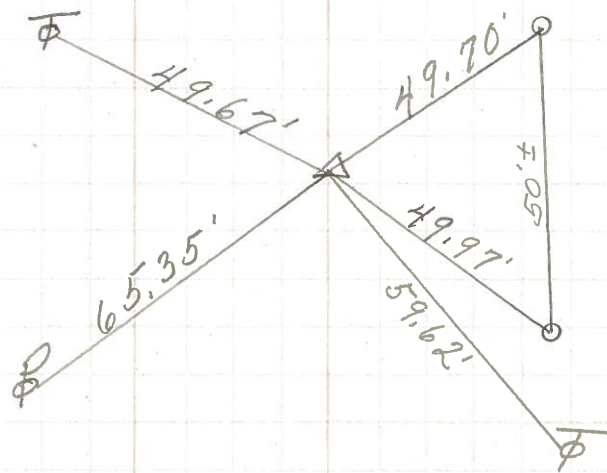
P.I. & survey
27+04.08
 $\Delta = 15^\circ 19' \text{ Rt.}$
 $\frac{1}{2}$ " iron rod

2 ③



P.I. & survey
15+99.74
R.R. spk.

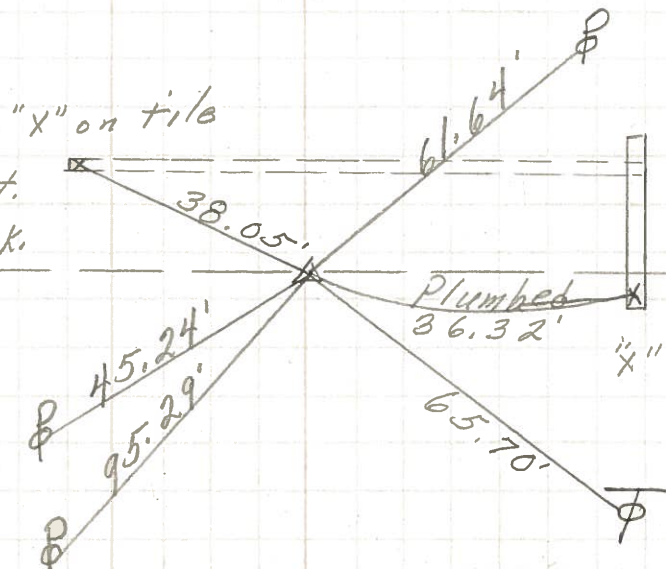
1 ②



2-conc. Mon. with
iron rods in center

P.I. of survey & const.
0+00 = 819+87.42 BK.
 $\Delta = 0^\circ 36' \text{ Lt.}$
R.R. spk.

0 ①



Ottawa, Co.
Sandusky, Co.

| | | | | | |
|-----------|-------|-----------|-------|---------|-----------------------|
| PERSONNEL | TITLE | PERSONNEL | TITLE | COUNTY | DATE |
| Schneider | | | | Ottawa | 7-16-68 |
| Mosser | | | | S. R. | 53 |
| Redding | | | | WEATHER | Cloudy |
| Potts | | | | SEC. | San. Co. Line - North |
| | | | | TEMP. | 75° |

DESCRIPTION Ties for Control Points JOB NO. _____

| DESCRIPTION | LEFT | CENTER LINE | RIGHT | JOB NO. |
|--|--------|-----------------|-------------------|---------------------------------------|
| P.T. & Survey 38+88.89 $\Delta = 10^\circ 10' \text{ Rt.}$ small R.R. spk. 6184 | 2-Mon. | | "X" on conc. tile | |
| P.T. & Const. 29+89.93 $\Delta = 29^\circ 31' \text{ Rt.}$ E = 167.55 6183 | | out in field | Δ | did not find |
| P.T. & Survey 27+04.08 $\Delta = 15^\circ 19' \text{ Rt.}$ 6182 | | 12" Cedar | | did not find |
| P.T. & Survey 15+99.74 R.R. spk. 6181 | | | | 2-Conc. Mon. with iron Rods in center |
| P.T. & Survey & Const. 0+00 Ahead $\Delta = 0^\circ 36' 30'' \text{ Lt.}$ 6180 - Ottawa Co. | | 819+87.42 BK. = | Δ | Ottawa Co. Sandusky, Co. |