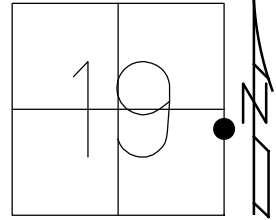


O.D.O.T. DISTRICT 2 SURVEY OFFICE (USE ONLY)

PERSONNEL \_\_\_\_\_ REFERENCE NO. 2 SHEET 2 OF 20  
 NOTES LEU DATE 3/23/17 ROUTE SR 53  
 H.C. HOMAN WEATHER SUNNY COUNTY OTTAWA  
 R.C. LEU TEMP. 30° TOWNSHIP BAY  
 SECTION 19  
 DWG BY MILLER PID 92368 T 6 N R 16 E

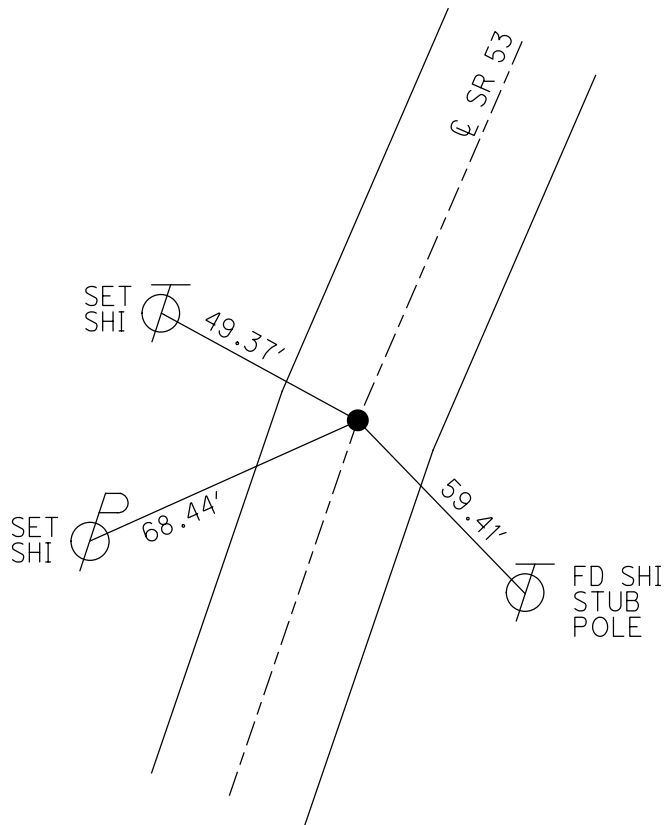
TYPE MONUMENT P.K./WASHER  
 ON SURFACE - ~~BELOW~~ ON \_\_\_\_\_  
 OFFSET  $\bar{C}$  PAVEMENT 0.5' LT : ~~RT~~  
11.5' TO LT EDGE PAVEMENT  
 STATION: 15+99.69



HORZ.DATUM: NAD83 (2011) GEOID: 2012A  
 GRID: NORTHING: 654323.564 EASTING: 1817955.390

- RECORD: P.I.
- STA 15+99.74
- SET PK/WASHER
- ATOP PK/WASHER
- ATOP R.R. SPIKE
- 11-16-84
- FD PK/WASHER
- 2" DOWN
- 6-21-93
- SET PK/WASHER
- 8-5-93, JLR
- SET PK/WASHER
- FD PK/WASHER
- 5-30-00, BC
- 7-26-00, SAH
- FD PK/WASHER
- REF2
- 6-22-15, JFO
- FD PK/WASHER
- REF2
- 3-23-17, DCH
- SET MAG/WASHER
- REF2
- 5-8-18, JLL

NOTE: ±200' S. OF PAULSEN RD



# O.D.O.T. DISTRICT 2 SURVEY OFFICE

PERSONNEL

REFERENCE NO. 2

SHEET 2 OF 17

NOTES CORDES

H.C. CORDES

R.C. ROUSOS

DATE 5/30/00

WEATHER CLOUDY

TEMP. 75°

ROUTE #53

COUNTY OTTAWA

TOWNSHIP BAY

SECTION 19

T.G.N.R. 16 E

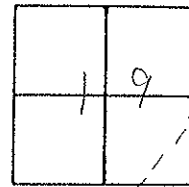
TYPE MONUMENT FD. P.K. & WASHER

ON SURFACE - ~~BELOW~~ ON SURFACE

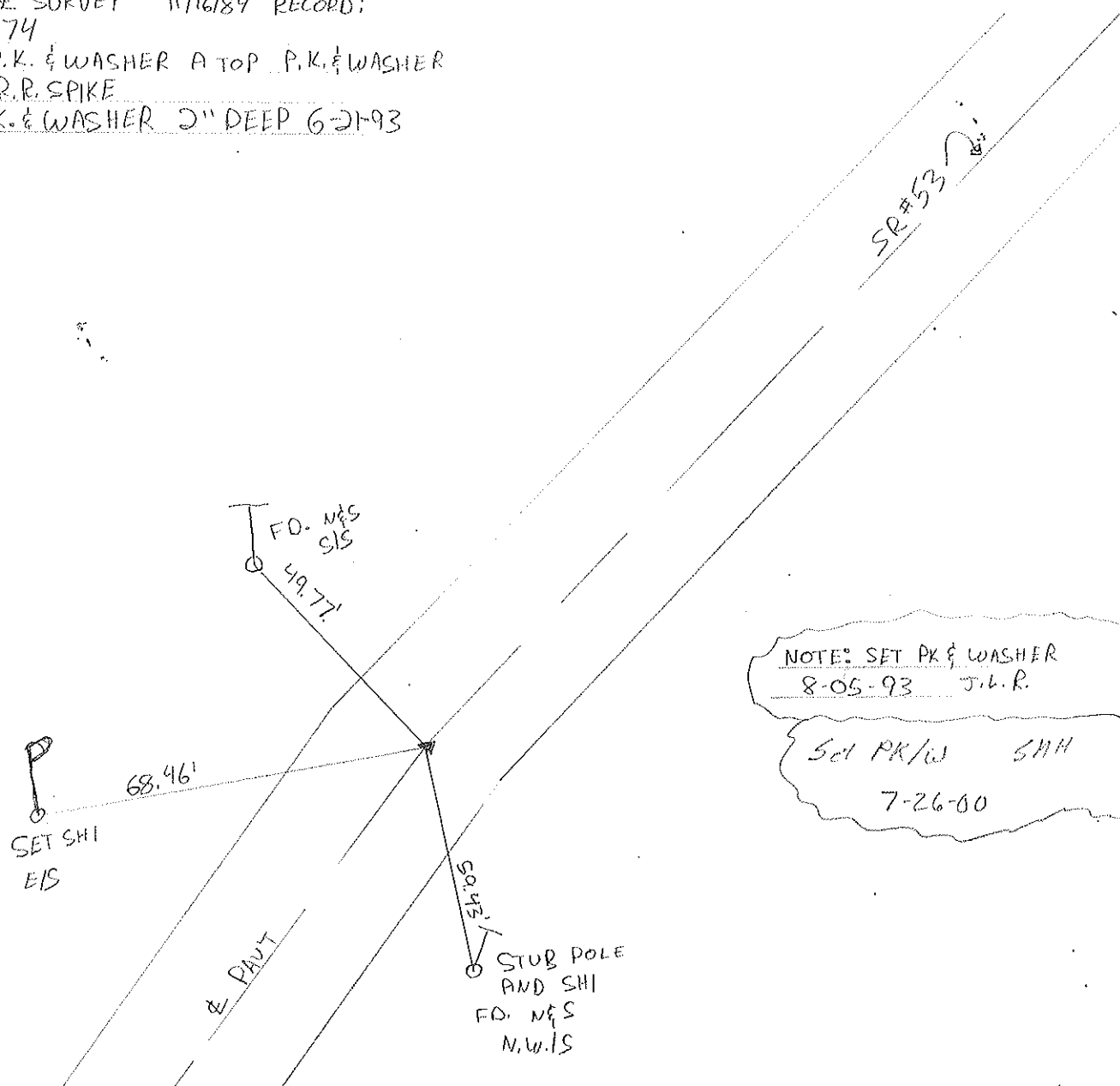
~~LEFT - & PAVT.~~ RIGHT ON & PAVT.

11.5 TO LT. EDGE PAVEMENT

S.L.M. 16+03



P.I. & SURVEY 11/16/84 RECORD:  
 15+99.74  
 SET P.K. & WASHER ATOP P.K. & WASHER  
 ATOP R.R. SPIKE  
 FD. P.K. & WASHER 2" DEEP 6-21-93



# O.D.O.T. DISTRICT 2 SURVEY OFFICE

PERSONNEL

REFERENCE NO. 1

SHEET 2 OF 17

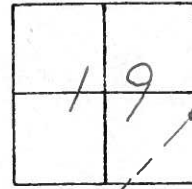
NOTES Cheney  
 H.C. RIPPLE  
 R.C. BARBOUR  
Geyman

DATE 6-21-1993  
 WEATHER Cloudy  
 TEMP. 75°

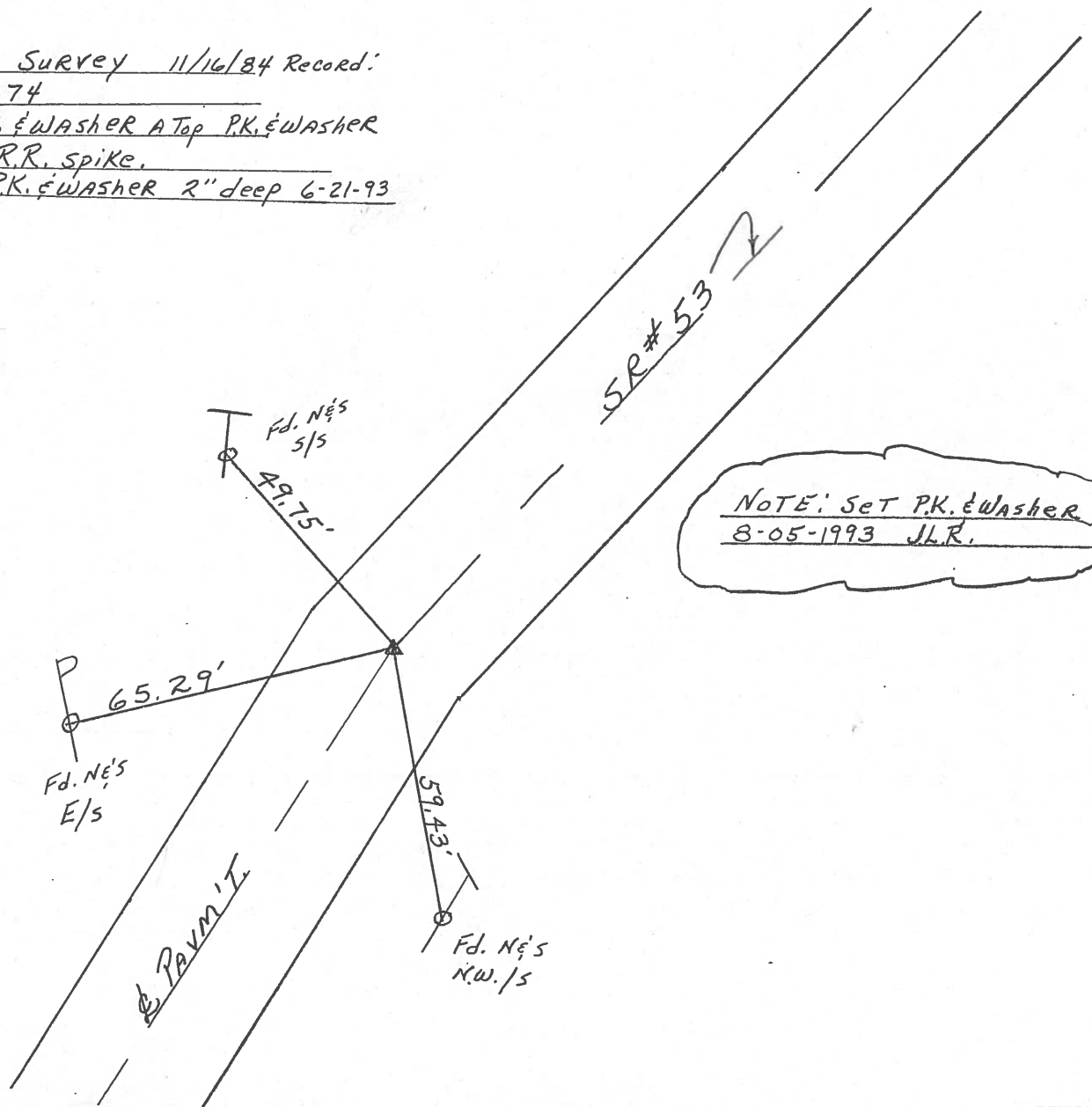
ROUTE #53  
 COUNTY OTTAWA  
 TOWNSHIP BAY  
 SECTION 19  
T 6 N R 16 E

TYPE MONUMENT Fd. P.K. & Washer  
 ON SURFACE - BELOW 2"  
 LEFT - & PAV'T. - RIGHT ON & PAV'T.  
11.5 TO LT. EDGE PAVEMENT  
 S.L.M. 16+03

2



P.I. & Survey 11/16/84 Record:  
15+99.74  
Set P.K. & Washer at Top P.K. & Washer  
at Top R.R. Spike.  
Fd. P.K. & Washer 2" deep 6-21-93



Q.D.O.T. DISTRICT 2 SURVEY OFFICE

SHEET 2 OF \_\_\_\_\_

County Ottawa S.R. # 53

Date Drawn 11/16/84 11/30/84

Township Bay

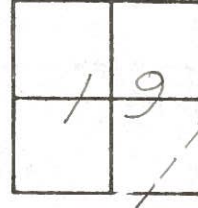
Weather overcast

Section 19

Temp. 40°

T6N, R16E

Personnel Cronin



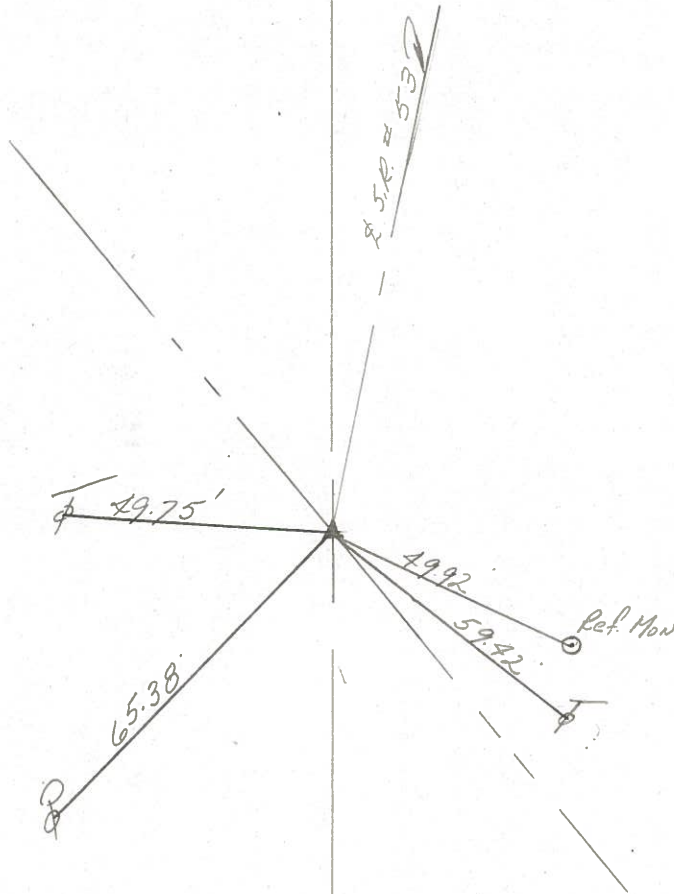
1

Ripple

2

Geyman

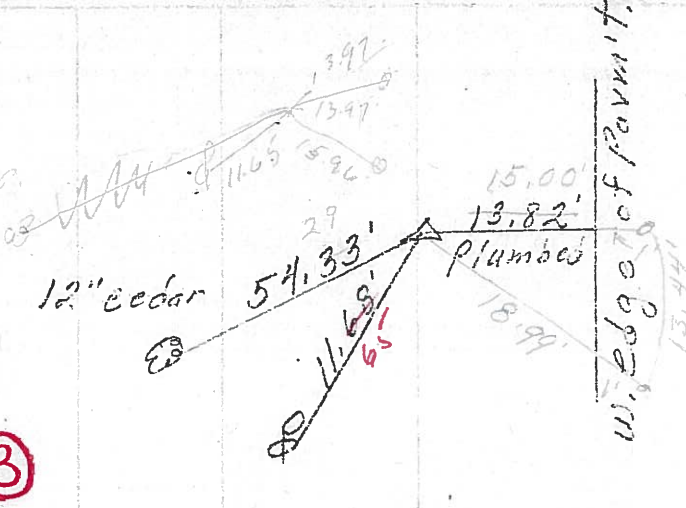
P.I. & Survey  
15499.74  
set P.K. & washer atop P.K.  
& washer atop R.R spike



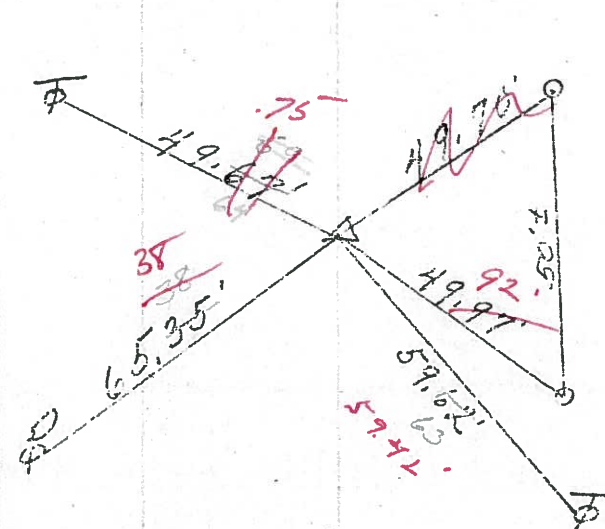
PERSONNEL	TITLE	PERSONNEL	TITLE	COUNTY	DATE	WEATHER	TEMP.
Schneider		Vinson		Ottawa	4-12-72	cloudy	30 55°
Mosser				S. R. 53			
Barbour				SEC. 19 & 21			
Geyman							

DESCRIPTION Box Top. LEFT CENTER LINE RIGHT JOB NO.

4/2/84  
P.I. & survey  
27+04.03  
 $\Delta = 15^\circ 19' \text{ Rt.}$   
1/2" iron rod  
3" below surface  
2 (3)

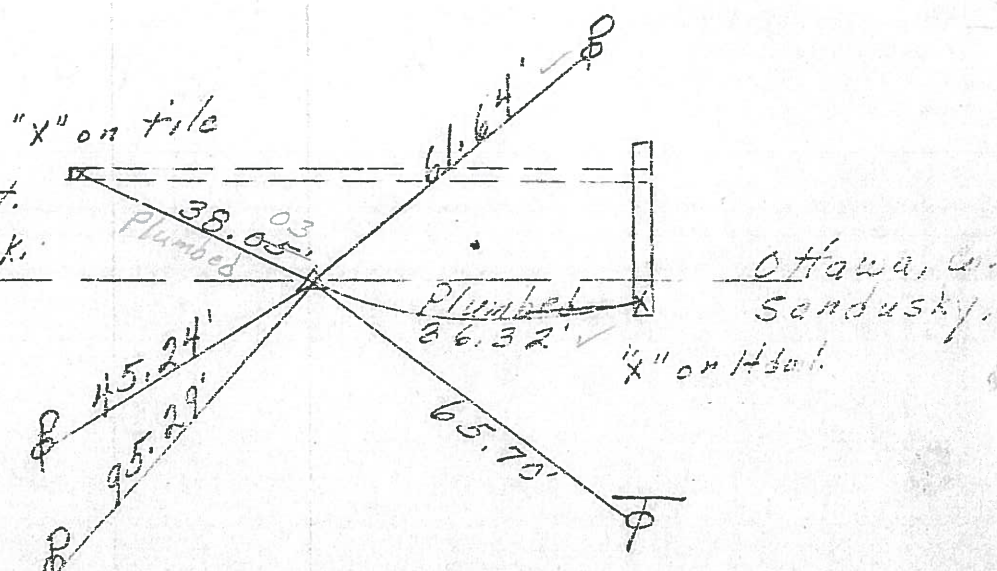


Resbt P.K. Nails  
6-21-76 & washers  
P.I. & survey  
15+99.74  
R.R. spk.  
1 (2)



4/2/84  
sunny - 46°  
2-conc. Man. with  
iron rods in center.

P.I. of survey & const.  
0+00 = 819+87.423k.  
 $\Delta = 0^\circ 36' \text{ Lt.}$   
R.R. spk.  
0 (1)

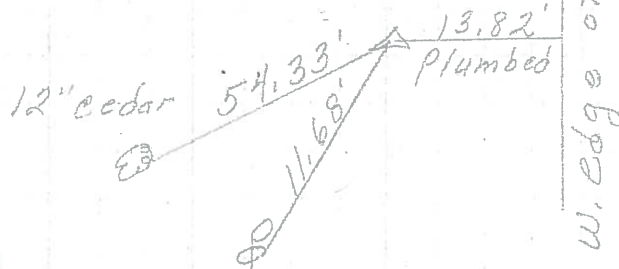


Ottawa, on  
Sandusky.

PERSONNEL	TITLE	PERSONNEL	TITLE	COUNTY	DATE
Schneider		Vinson		Ottawa	4-12-72
Mosser				S. R. 53	WEATHER Cloudy
Barbour				SEC. 19 & 21	TEMP. 55°
Geyman					

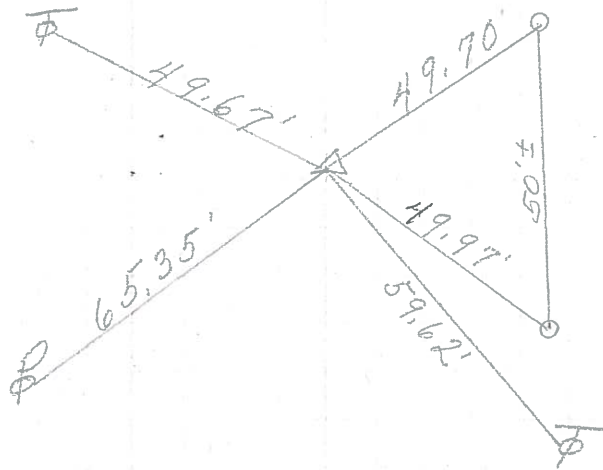
DESCRIPTION Bay Twp.      LEFT      CENTER LINE      RIGHT      JOB NO.

P.I. & survey  
27+04.08  
 $\Delta = 15^\circ 19' \text{ Rt.}$   
 $\frac{1}{2}$ " iron rod



2      ③

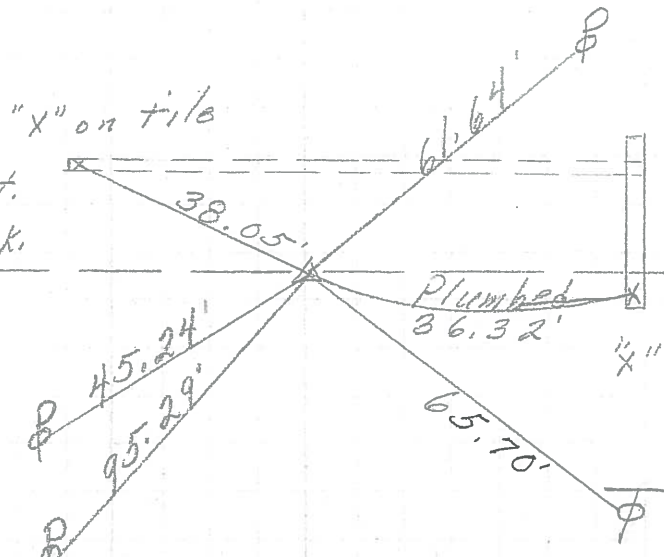
P.I. & survey  
15+99.74  
R.R. spk.



2-CONC. Man. with  
iron rods in center

1      ②

P.I. of survey & const.  
0+00 = 819+87.42 BK.  
 $\Delta = 0^\circ 36' \text{ Lt.}$   
R.R. spk.



Ottawa, Co.  
Sandusky, Co.

0      ①

PERSONNEL	TITLE	PERSONNEL	TITLE	COUNTY	DATE
Schneider				Ottawa	7-11-68
Mosser				S. R. 53	WEATHER Cloudy
Redding				SEC. San. Co. Line - North	TEMP. 75°
Potts					

DESCRIPTION Ties for Control Points JOB NO. \_\_\_\_\_

DESCRIPTION	LEFT	CENTER LINE	RIGHT
P.T. & Survey 38+88.89 $\Delta = 10^\circ 10' \text{ Rt.}$ small R.R. Spk. 6184	2-Mon.		P.K. Nail 1.05' small R.R. Spk. "X" on Conc-tile
P.T. & Const. 29+89.93 $\Delta = 29^\circ 31' \text{ Rt.}$ F = 167.55 6183		out in field	did not find
P.T. & Survey 27+09.08 $\Delta = 15^\circ 19' \text{ Rt.}$ 6182	12" Cedar		did not find
P.T. & Survey 15+99.74 R.R. Spk. 6181			2- Conc-Mark with iron Rods in center
P.I. & Survey & Const. 819+87.42 BK. = 0+00 Ahead $\Delta = 0^\circ 36' 30' \text{ Lt.}$ 6180 - Ottawa Co.		Ottawa Co. Sandusky, Co.	