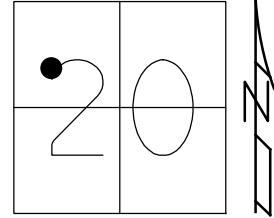


O.D.O.T. DISTRICT 2 SURVEY OFFICE (USE ONLY)

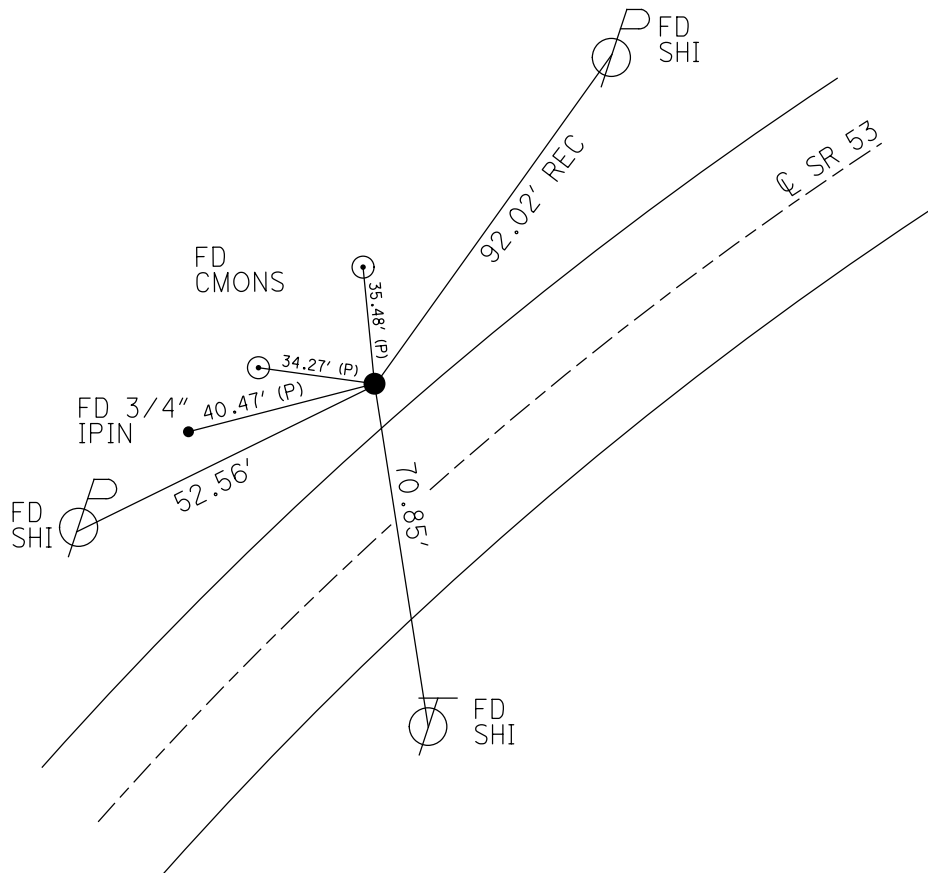
PERSONNEL \_\_\_\_\_ REFERENCE NO. 4 SHEET 4 OF 20  
 NOTES LEU DATE 3/23/17 ROUTE SR 53  
 H.C. HOMAN WEATHER SUNNY COUNTY OTTAWA  
 R.C. LEU TEMP. 30° TOWNSHIP BAY  
 \_\_\_\_\_ SECTION 20  
 DWG BY MILLER PID 92368 T 6 N R 16 E

TYPE MONUMENT P.K./WASHER  
 ON SURFACE - ~~BELOW~~ ON \_\_\_\_\_  
 OFFSET  $\varnothing$  PAVEMENT 12.5' LT : ~~RT~~  
1' TO LT EDGE PAVEMENT  
 STATION: 38+92.63



HORZ.DATUM: NAD83 (2011) GEOID: 2012A  
 GRID: NORTHING: 656127.299 EASTING: 1819337.660

RECORD: P.I.  
 STA 38+88.89  
 $\Delta=10^{\circ}10'$  RT  
 SET PK/WASHER  
 ATOP  
 R.R. SPIKE  
 12.5' LT OF  $\varnothing$   
 11-16-84  
 ST PK/WASHER  
 8-5-93, JLR  
 FD PK/WASHER  
 5-30-00, BC  
 SET PK/WASHER  
 7-26-00, SAH  
 FD PK/WASHER  
 REF4  
 6-22-15, JFO  
 FD PK/WASHER  
 REF4  
 3-23-17, DCH  
 SET MAG/WASHER  
 REF4  
 5-8-18, JLL



# O.D.O.T. DISTRICT 2 SURVEY OFFICE

PERSONNEL \_\_\_\_\_

REFERENCE NO. 4

SHEET 4 OF 17

NOTES CORDES

H.C. CORDES

R.C. DOUSOS

DATE 5/30/00

WEATHER SUNNY

TEMP. 75°

ROUTE SR # 53

COUNTY OTTAWA

TOWNSHIP RAY

SECTION 20

T 6 N R 16 E

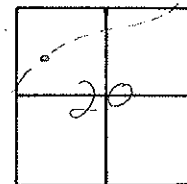
TYPE MONUMENT FD P.K. & WASHER

ON SURFACE - ~~BELOW~~ ON SURFACE

LEFT - & PAV'T. - ~~RIGHT~~ 12.5'

1' TO LT. EDGE PAVEMENT

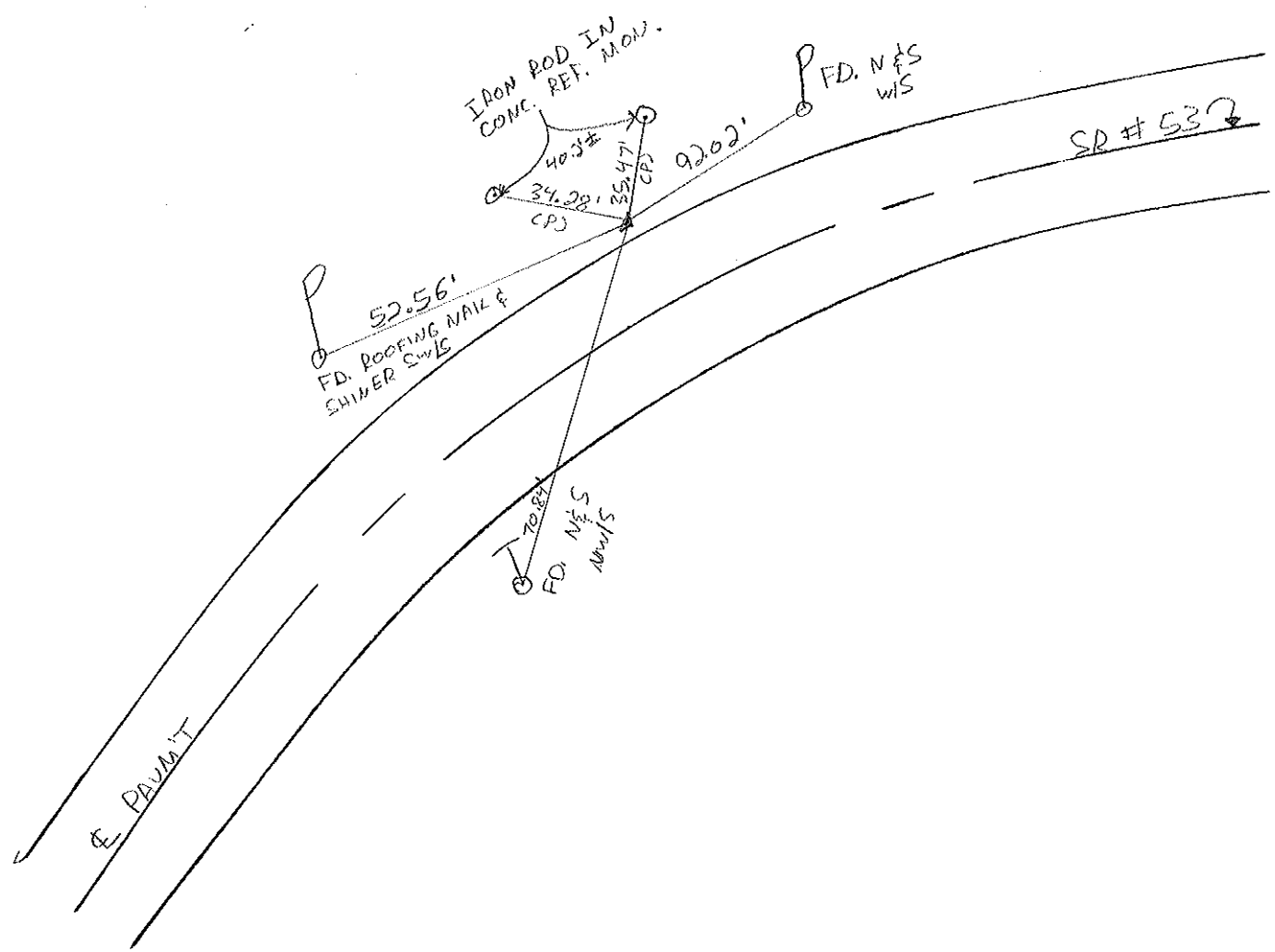
S.L.M. 39+02 ±



RECORD: 11-16-1984  
 P.T. SURVEY Δ = 10° 10' RT.  
 STA. 38+88.89  
 SET P.K. & WASHER A TOP  
 RP SPIKE - 12.5' LT. & PAVMT

NOTE: SET P.K. & WASHER  
 8-5-1993 T.L.R.

Set PK/W SAM  
 7-26-00



O.D.O.T. DISTRICT 2 SURVEY OFFICE

PERSONNEL

REFERENCE NO. 4

SHEET 4 OF 17

NOTES CHENEY

H.C. RIPPLE

DATE 6-21-93

ROUTE SR#53

R.C. BARBOUR

WEATHER Cloudy

COUNTY OTTAWA

GEYMAN

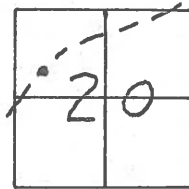
TEMP. 75°

TOWNSHIP BAY

SECTION 20

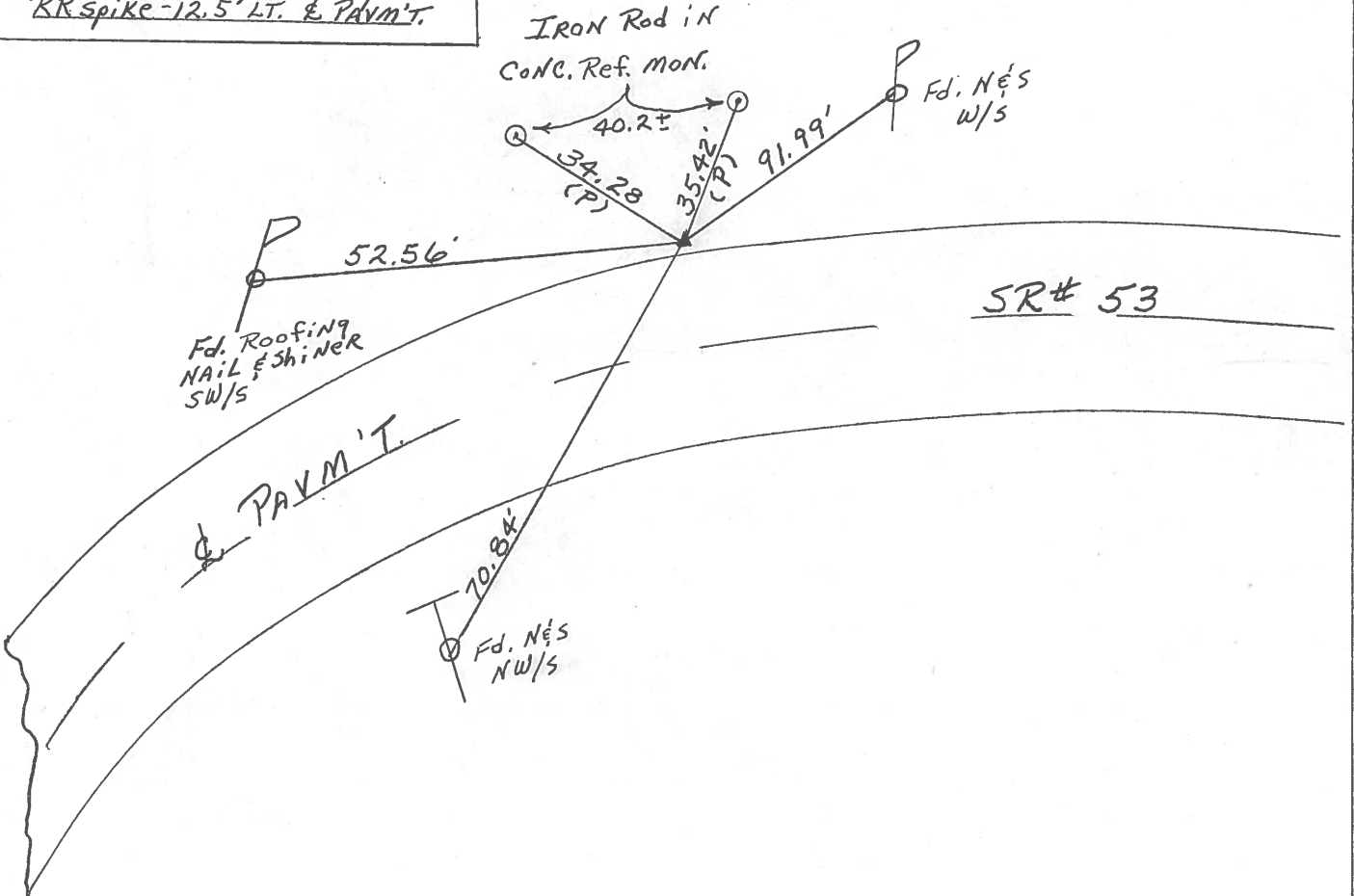
T 6 N R 16 E

TYPE MONUMENT Fd. PK. & Washer  
 ON SURFACE - ~~BELOW~~ ON SURFACE  
 LEFT- & PAV'T. - ~~RIGHT~~ 12.5'  
1' TO LT. EDGE PAVEMENT  
 S.L.M. 39+02 ±



Record: 11-16-1984  
P.I. Survey Δ = 10°10' RT.  
STA. 38+88.89  
Set PK. & Washer at Top  
RR spike - 12.5' LT. & PAVM'T.

NOTE: Set PK. & Washer  
8-5-1993 JLR.



Q.D.O.T. DISTRICT 2 SURVEY OFFICE

SHEET 4 OF

County Ottawa S.R. #53

Township Bay

Section 20

T6N, R16E

Personnel Cronin

Ripple

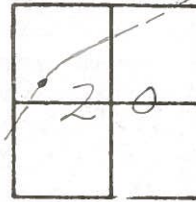
Geymen

4

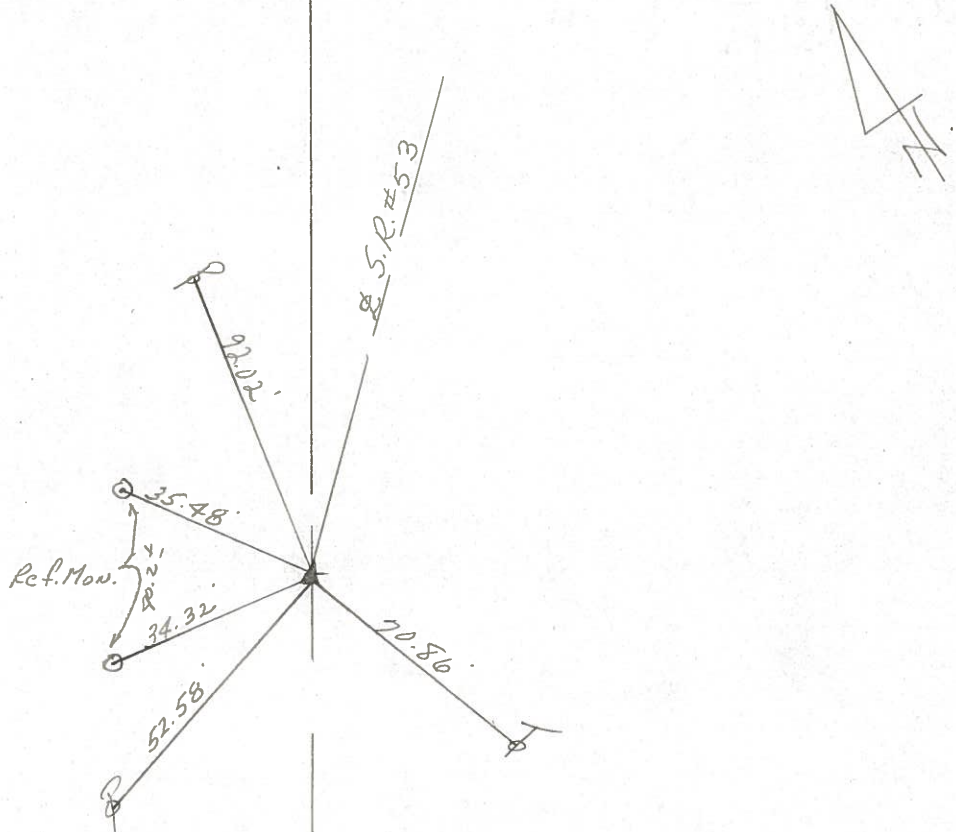
Date Drawn 11/16/84 11/30/84

Weather overcast

Temp. 40°



P.I. Survey A=10°10' Rt  
38+88.89  
set P.K. washer at top  
P.K. spike -12.5' Lt. & Point





PERSONNEL TITLE PERSONNEL TITLE

COUNTY Ottawa

DATE 3-11-76  
4-12-72

S. R. 53

WEATHER cloudy

SEC. 20

TEMP. 55° 30'

DESCRIPTION Bay Twp.

LEFT

CENTER LINE

RIGHT

JOB NO.

6-22-76

Reset P.K. Nails

38°  
3/11/84  
overcast

P.I.  
53+50.71  
P.I. survey & Const.  
Δ = 3° 32' Rt.  
small R.R. spk.  
3' Lt of PVT

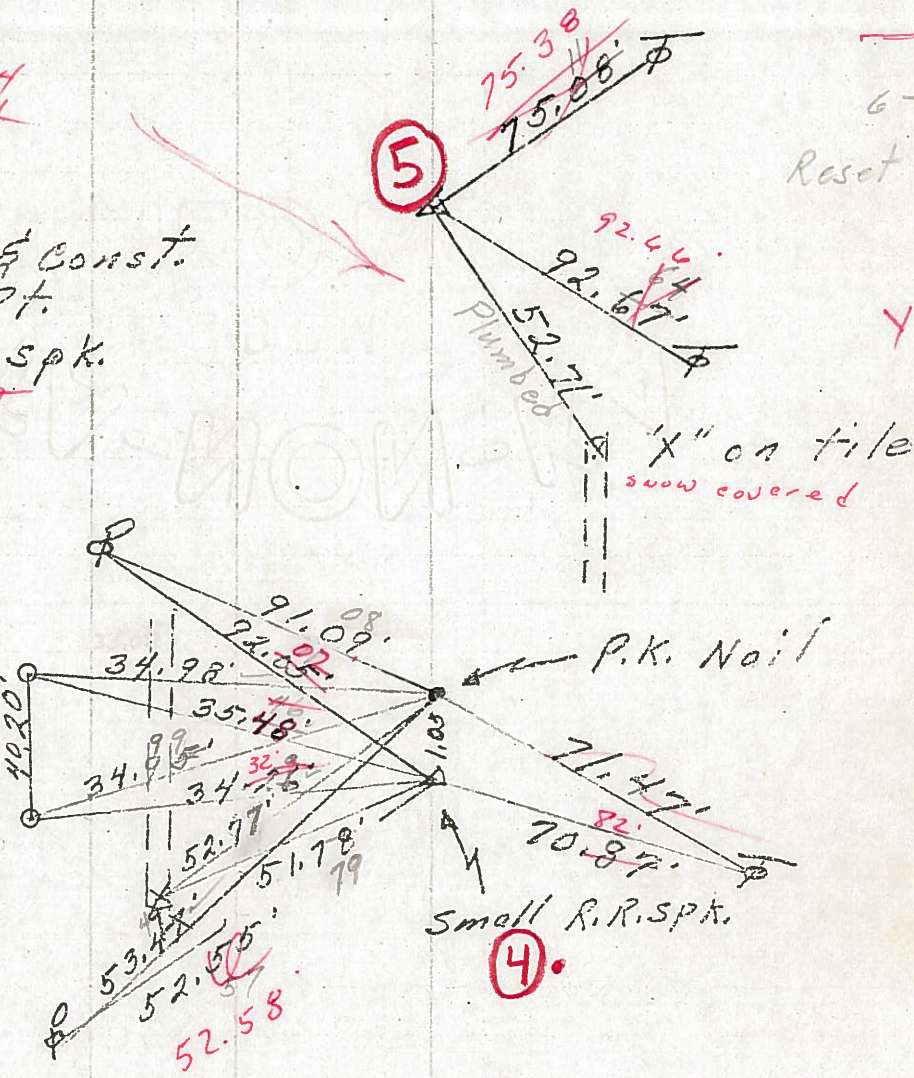
5

4/2/84  
sunny 46°

P.I. & survey  
38+88.89  
Δ = 10° 10' Rt.  
Lt. edge permit

2' Mon.

4



P.I. & Const.  
29+89.93  
Δ = 29° 31' Rt.  
E = 167.55'

Δ in the field did not find

3



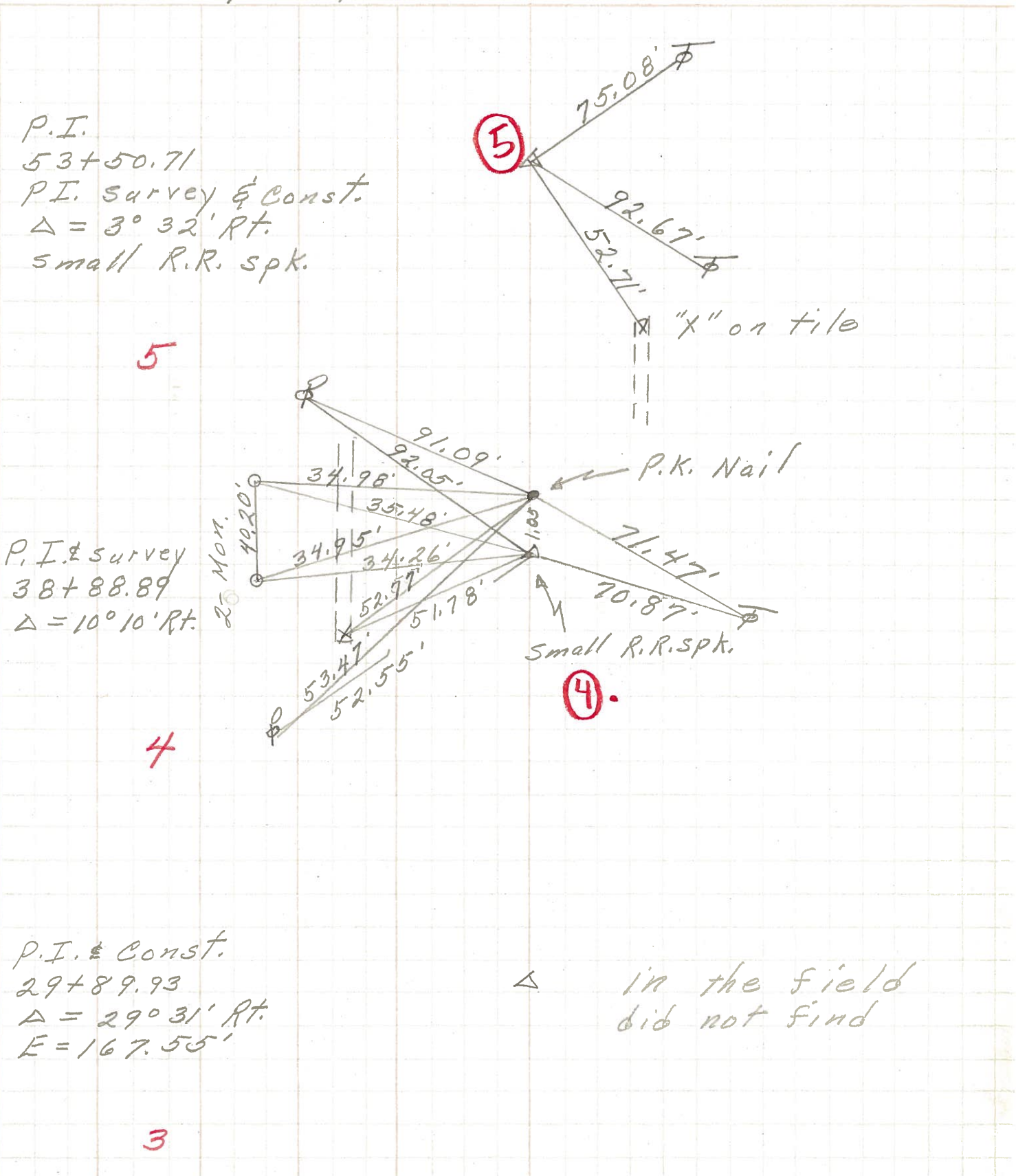
PERSONNEL TITLE PERSONNEL TITLE

COUNTY Ottawa DATE 4-12-72

S. R. 53 WEATHER cloudy

SEC. 20 TEMP. 55°

DESCRIPTION Bay Twp. LEFT CENTER LINE RIGHT JOB NO.



P.I.  
53+50.71  
P.I. Survey & Const.  
 $\Delta = 3^{\circ} 32' \text{ Rt.}$   
Small R.R. Spk.

5

P.I. & Survey  
38+88.89  
 $\Delta = 10^{\circ} 10' \text{ Rt.}$

4

4.

P.I. & Const.  
29+89.93  
 $\Delta = 29^{\circ} 31' \text{ Rt.}$   
E = 167.55'

$\Delta$  in the field did not find

3

PERSONNEL	TITLE	PERSONNEL	TITLE	COUNTY	<u>Ottawa</u>	DATE	<u>7-16-68</u>
<u>Schneider</u>				S. R.	<u>53</u>	WEATHER	<u>Cloudy</u>
<u>Mosser</u>				SEC.	<u>San. Co. Line - North</u>	TEMP.	<u>75°</u>
<u>Redding</u>				DESCRIPTION <u>Ties for Control Points</u>			
<u>Potts</u>				JOB NO. _____			

DESCRIPTION	LEFT	CENTER LINE	RIGHT	JOB NO.
P.I. & Survey 38+88.89 $\Delta = 10^\circ 10' \text{ Rt.}$ Small R.R. Spk. 6184	2-Mon.		did not find	
P.I. & Const. 29+89.93 $\Delta = 29^\circ 31' \text{ Rt.}$ E = 167.55 6183		out in field	did not find	
P.I. & Survey 27+04.08 $\Delta = 15^\circ 19' \text{ Rt.}$ 6182	12" Cedar		did not find	
P.I. & Survey 15+99.74 R.R. Spk. 6181			2- Conc. Mark with iron Rods in center	
P.I. & Survey & Const. 819+87.42 B.K. = 0+00 Ahead $\Delta = 0^\circ 36' 30' \text{ Lt.}$ 6180 - Ottawa Co.			Ottawa Co. Sandusky, Co.	