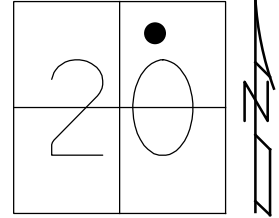


O.D.O.T. DISTRICT 2 SURVEY OFFICE (USE ONLY)

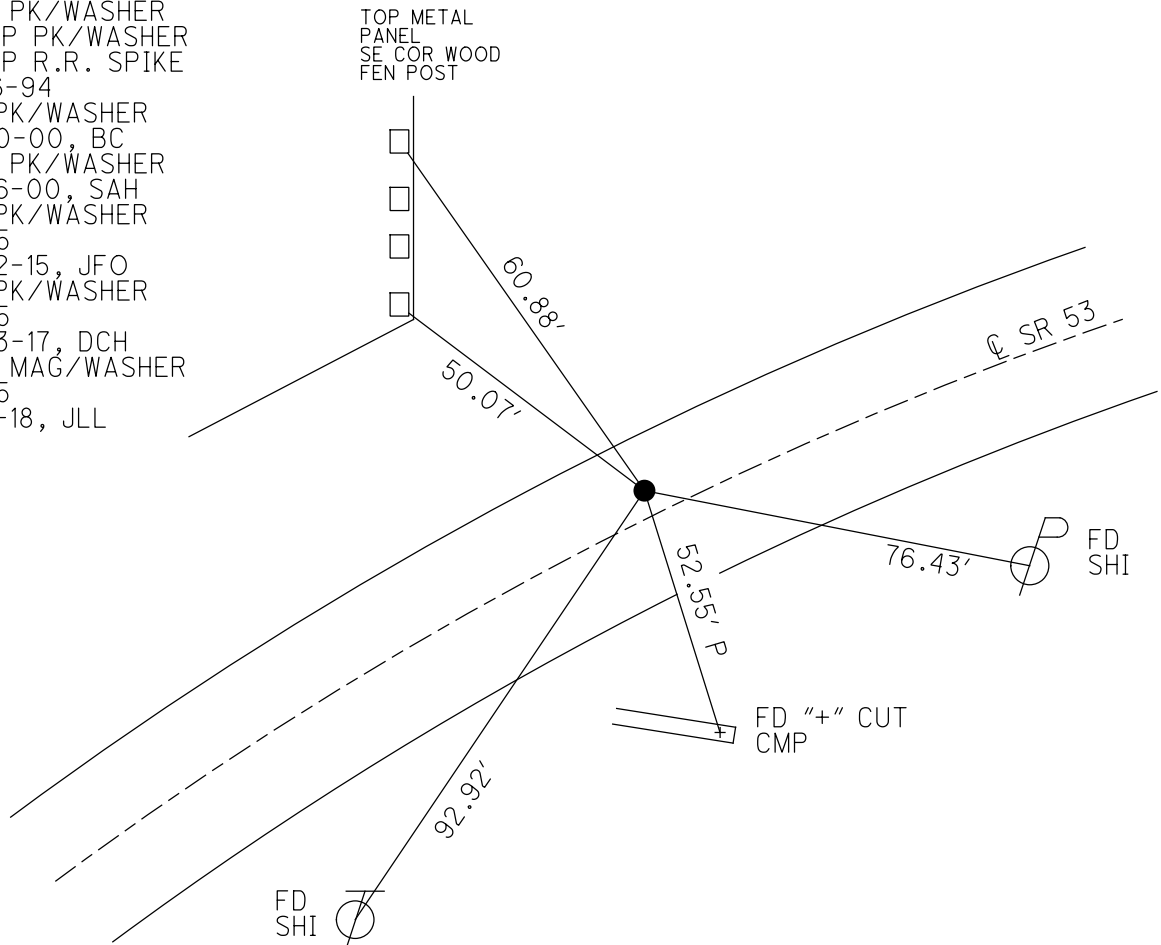
PERSONNEL _____ REFERENCE NO. 5 SHEET 5 OF 20
 NOTES LEU DATE 3/23/17 ROUTE SR 53
 H.C. HOMAN WEATHER SUNNY COUNTY OTTAWA
 R.C. LEU TEMP. 30° TOWNSHIP BAY
 DWG BY MILLER PID 92368 SECTION 20
 T 6 N R 16 E

TYPE MONUMENT P.K./WASHER
 ON SURFACE - ~~BELOW~~ ON _____
 OFFSET 8.5' TO LT EDGE PAVEMENT
 STATION: 53+54.85



HORZ. DATUM: NAD83 (2011) GEOID: 2012A
 GRID: NORTHING: 656966.090 EASTING: 1820535.233

RECORD: P.I.
 STA 53=50.01
 $\Delta = 3^{\circ}32' RT$
 SET PK/WASHER
 ATOP PK/WASHER
 ATOP R.R. SPIKE
 11-16-94
 FD PK/WASHER
 5-30-00, BC
 SET PK/WASHER
 7-26-00, SAH
 FD PK/WASHER
 REF5
 6-22-15, JFO
 FD PK/WASHER
 REF5
 3-23-17, DCH
 SET MAG/WASHER
 REF5
 5-8-18, JLL



O.D.O.T. DISTRICT 2 SURVEY OFFICE

PERSONNEL _____

REFERENCE NO. 5

SHEET 5 OF 17

NOTES CORDES

H.C. CORDES

R.C. Rowles

DATE 5-30-00

WEATHER SUNNY

TEMP. 75°

ROUTE SR 53

COUNTY OTTAWA

TOWNSHIP Bay

SECTION 20

T.C. N.R. 16 E

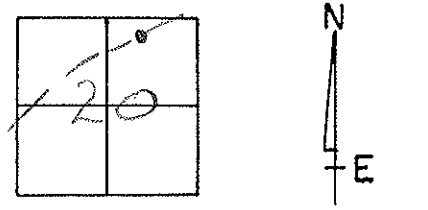
TYPE MONUMENT Fd. PK & WASHER

ON SURFACE - ~~BELOW~~ ON SURFACE

LEFT - CL PAV'T. - ~~RIGHT~~ S.S.

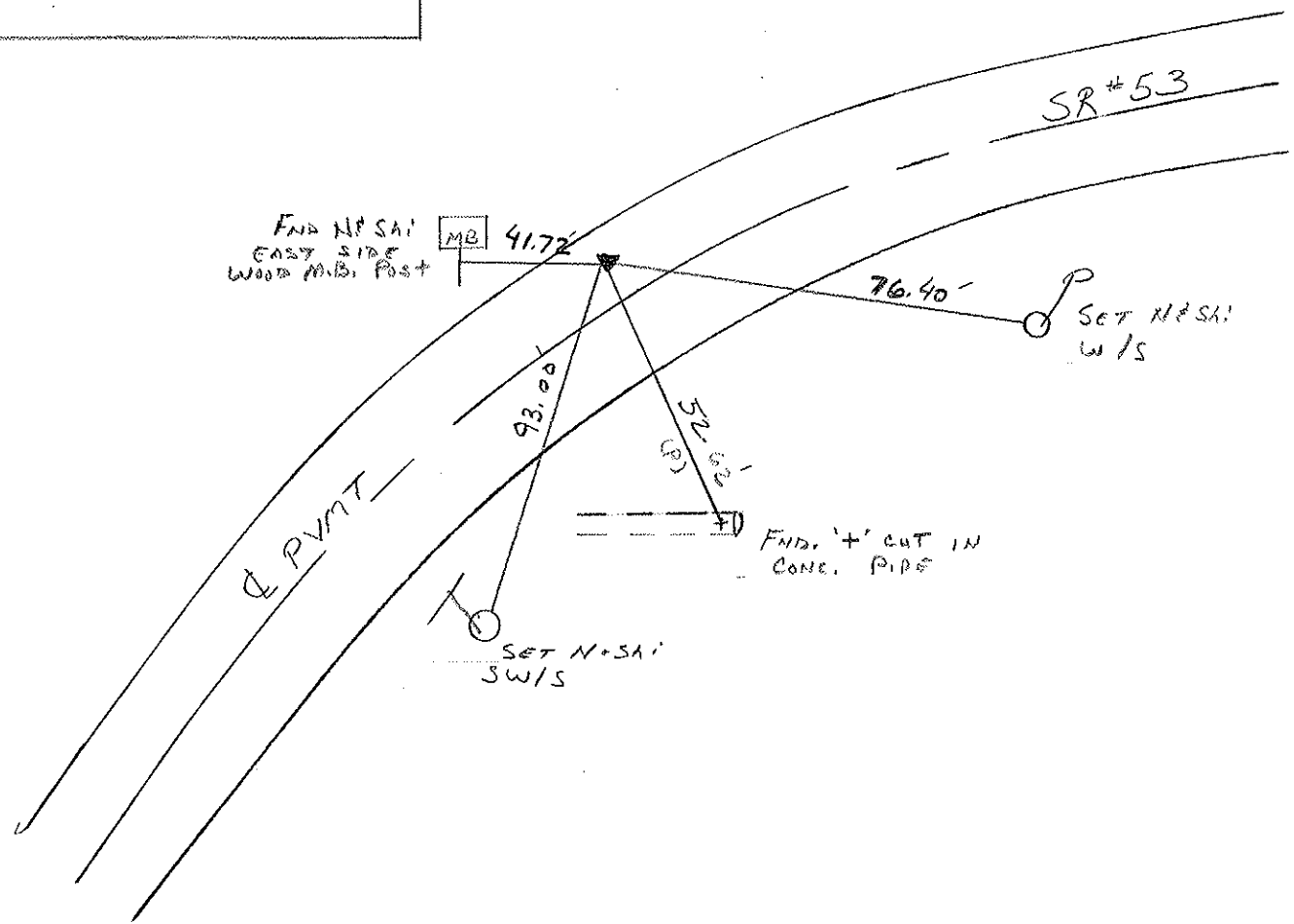
8.5 TO LT EDGE PAVEMENT

S.L.M. 53+68 ±



RECORD: 11-16-1994
 P.Z. SURVEY & CONST.
 STA. 53+50.01
 Δ = 03° 32' RT
 SET PK & WASHER ATOP PK &
 WASHER ATOP RR SPIKE
 3" LT. & PAVT.

Set PK/W SAIL
 7-26-00



O.D.O.T. DISTRICT 2 SURVEY OFFICE

PERSONNEL

REFERENCE NO. 5

SHEET 5 OF 17

NOTES CHENEY

H.C. RIPPLE

R.C. BARBOUR

GEYMAN

DATE 6-21-1993

WEATHER Cloudy

TEMP. 75°

ROUTE SR#53

COUNTY OTTAWA

TOWNSHIP BAY

SECTION 20

T 6 N R 16 E

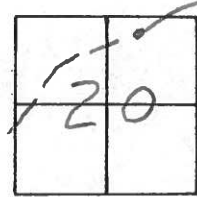
TYPE MONUMENT Fd. P.K. & WASHER

ON SURFACE - ~~BELOW~~ ON SURFACE

LEFT- & PAV'T. - RIGHT 3.5'

8.5 TO LT. EDGE PAVEMENT

S.L.M. 53+68±



Record: 11-16-1984

PI. Survey & Const.

STA. 53+50.71

Δ = 03° 32' RT.

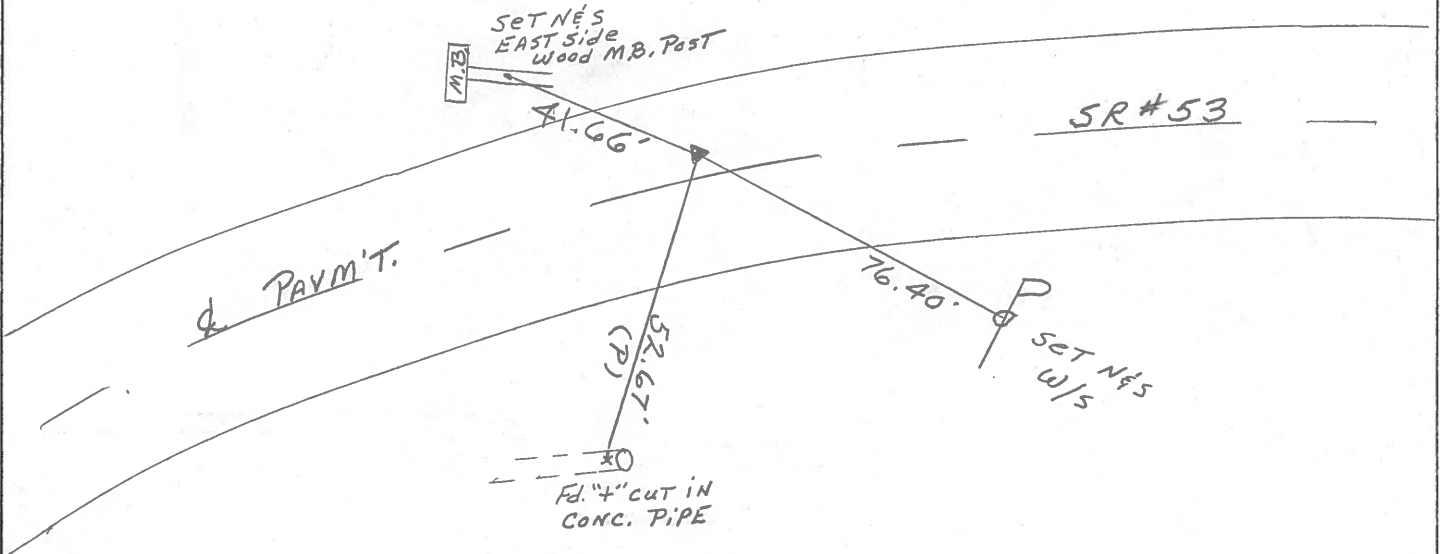
Set PK & Washer Atop PK. &

Washer Atop RR. Spike

3' LT. & PAVM'T.

Note: Set PK. & Washer

8-05-1993 J.L.R.



County Ottawa S.R. # 53

Township Bay

Section 20

T 6 N, R 16 E

Personnel Cronin

Ripple

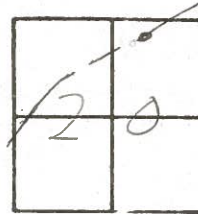
Geyman

5

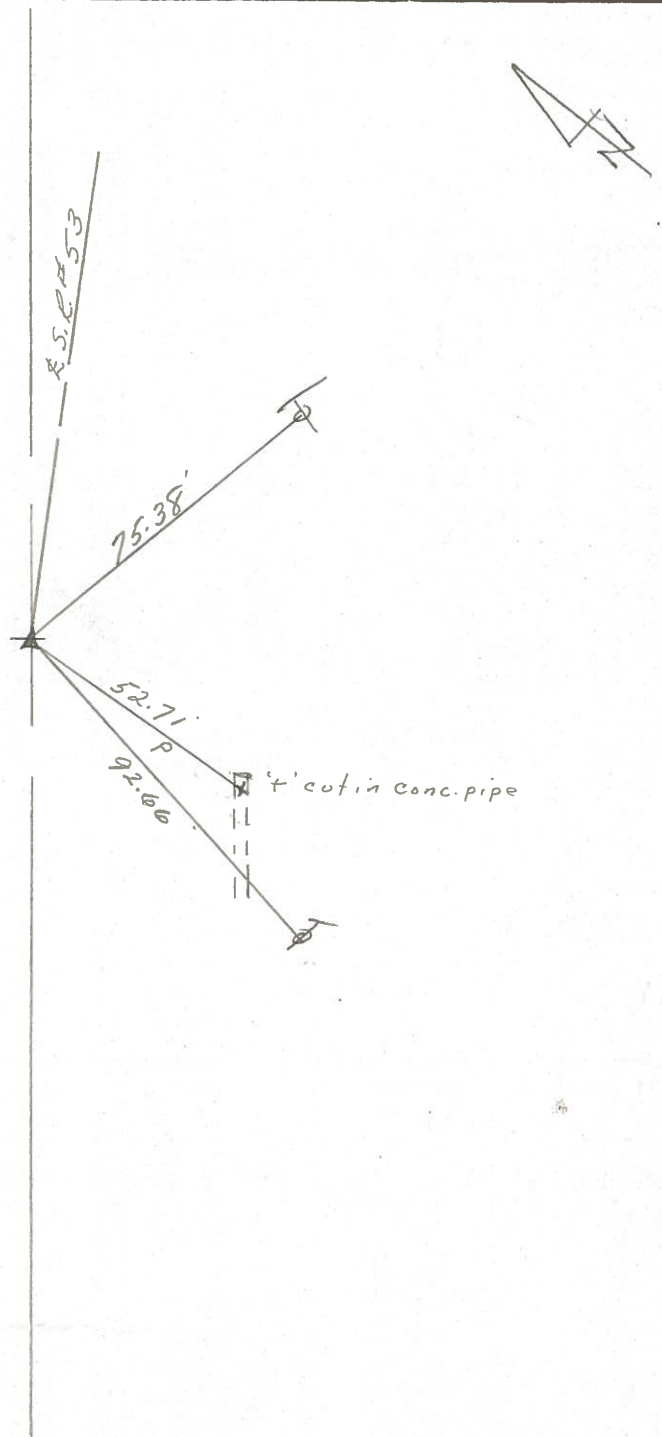
Date Drawn 11/16/84 11/30/84

Weather overcast

Temp. _____



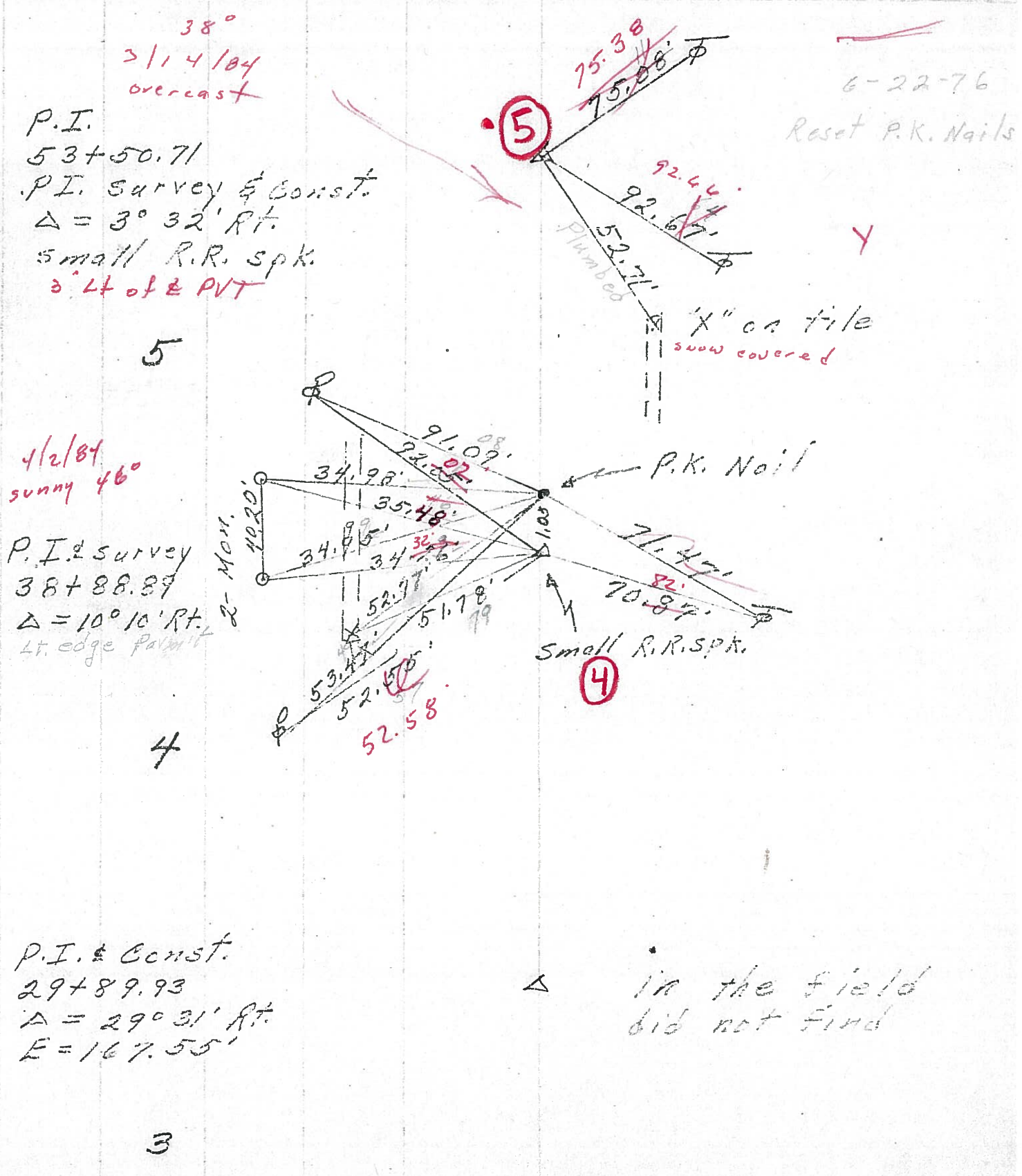
$\Delta = 03^{\circ} 32' \text{ Rt.}$
P.I. Survey & Const
53+50.71
set P.K. & washer atop P.K.
& washer atop R.R. spike 3' Lt.
& Pavement



PERSONNEL	TITLE	PERSONNEL	TITLE

COUNTY Ottawa DATE 3-11-76
4-12-72
 S. R. 53 WEATHER cloudy
 SEC. 20 TEMP. 55° 30

DESCRIPTION Bav Twp. LEFT CENTER LINE RIGHT JOB NO.



P.I.
 53+50.71
 P.I. survey & Const.
 $\Delta = 3^\circ 32' \text{ Rt.}$
 small R.R. spk.
 3' Lt of & PVT

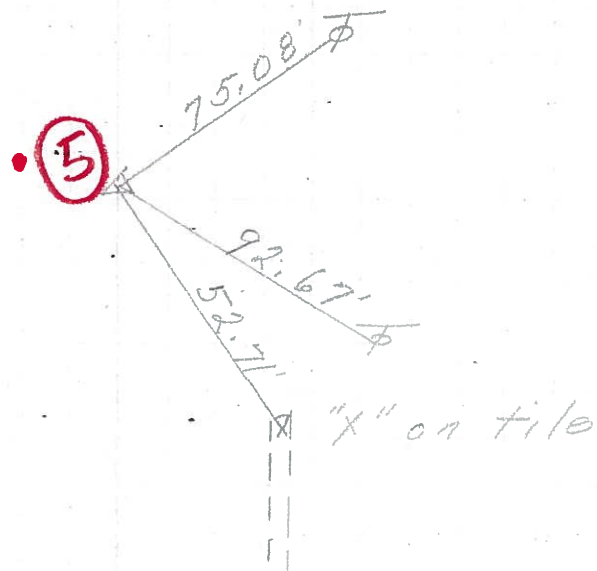
4/2/84
 sunny 46°
 P.I. & survey
 38+88.89
 $\Delta = 10^\circ 10' \text{ Rt.}$
 Lt. edge permit

P.I. & Const.
 29+89.93
 $\Delta = 29^\circ 31' \text{ Rt.}$
 $E = 167.55'$

PERSONNEL	TITLE	PERSONNEL	TITLE	COUNTY	DATE	WEATHER	TEMP.
				Ottawa	4-12-72	cloudy	55°
				S. R. 53			
				SEC. 20			
DESCRIPTION <u>Bay Twp.</u>							
	LEFT	CENTER LINE	RIGHT	JOB NO.			

P.I.
53+50.71
P.I. survey & const.
 $\Delta = 3^{\circ} 32' \text{ Rt.}$
small R.R. spk.

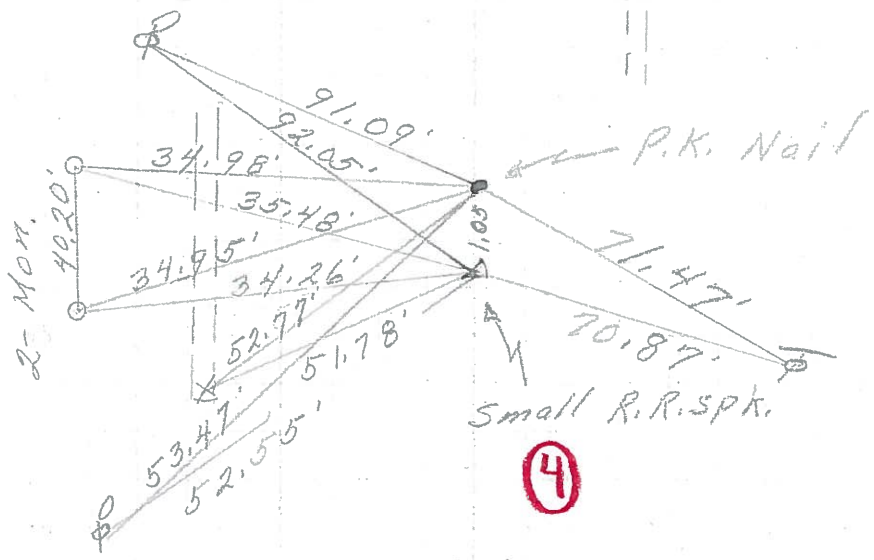
5



P.I. & survey
38+88.89
 $\Delta = 10^{\circ} 10' \text{ Rt.}$

2 Mon.

4



P.I. & Const.
29+89.93
 $\Delta = 29^{\circ} 31' \text{ Rt.}$
E = 167.55'

Δ in the field did not find

3

PERSONNEL	TITLE	PERSONNEL	TITLE	COUNTY	DATE
Schneider				Ottawa	7-11-68
Mosser				S. R. 53	WEATHER Fair
Redding				SEC. San. Co. Line - North	TEMP. 75°
Potts J					

DESCRIPTION Ties for Control Points JOB NO. _____

