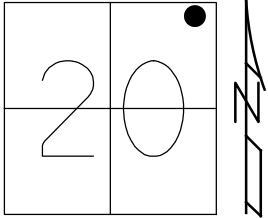


O.D.O.T. DISTRICT 2 SURVEY OFFICE (USE ONLY)

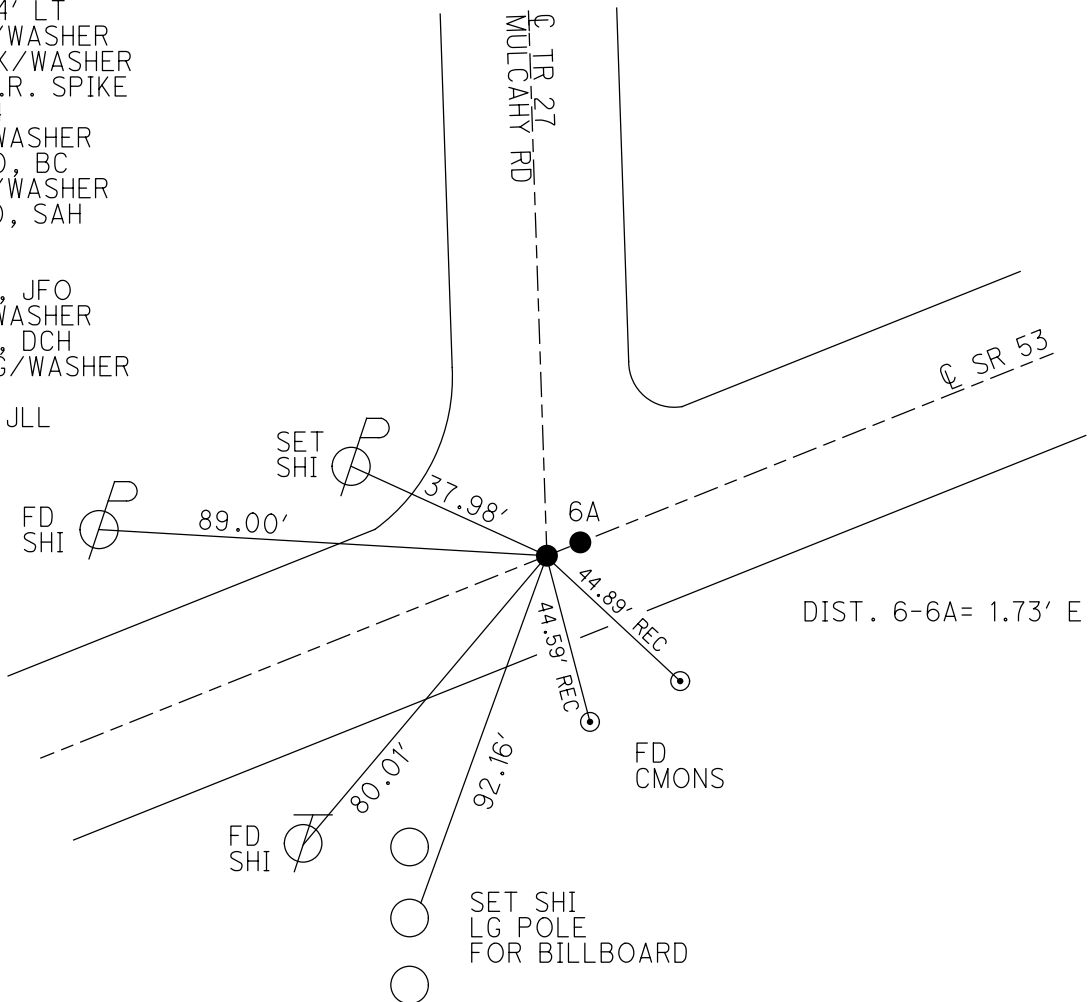
PERSONNEL _____ REFERENCE NO. 6 SHEET 6 OF 20
 NOTES LEU DATE 3/23/17 ROUTE SR 53
 H.C. HOMAN WEATHER SUNNY COUNTY OTTAWA
 R.C. LEU TEMP. 37° TOWNSHIP BAY
 DWG BY MILLER PID 92368 SECTION 20
 T 6 N R 16 E

TYPE MONUMENT P.K./WASHER
 ON SURFACE - ~~BELOW~~ ON _____
 OFFSET \varnothing PAVEMENT ON _____ LT : RT
12' TO RT EDGE PAVEMENT
 STATION: 70+20.77



HORZ.DATUM: NAD83 (2011) GEOID: 2012A
 GRID: NORTHING: 657835.518 EASTING: 1821954.450

RECORD: P.I.
 STA 70+36
 $\Delta=00^{\circ}04'$ LT
 SET PK/WASHER
 ATOP PK/WASHER
 ATOP R.R. SPIKE
 11-29-84
 FD PK/WASHER
 5-30-00, BC
 SET PK/WASHER
 7-26-00, SAH
 FD MAG
 REF6
 6-22-15, JFO
 FD PK/WASHER
 5-23-17, DCH
 SET MAG/WASHER
 REF6
 5-8-18, JLL



O.D.O.T. DISTRICT 2 SURVEY OFFICE

PERSONNEL

REFERENCE NO. 6

SHEET 6 OF 17

NOTES Brown

H.C. Cordes

DATE 5-30-00

ROUTE SR53

R.C. Rousos

WEATHER Sunny

COUNTY OTTAWA

Karger

TEMP. 80°F

TOWNSHIP Bay

SECTION 20

T6 N R 16 E

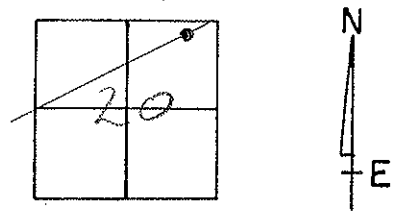
TYPE MONUMENT P.K.

ON SURFACE - ~~BELOW~~ ON SURFACE

~~LEFT - & PAV'T. - RIGHT~~ ON & PAV'T.

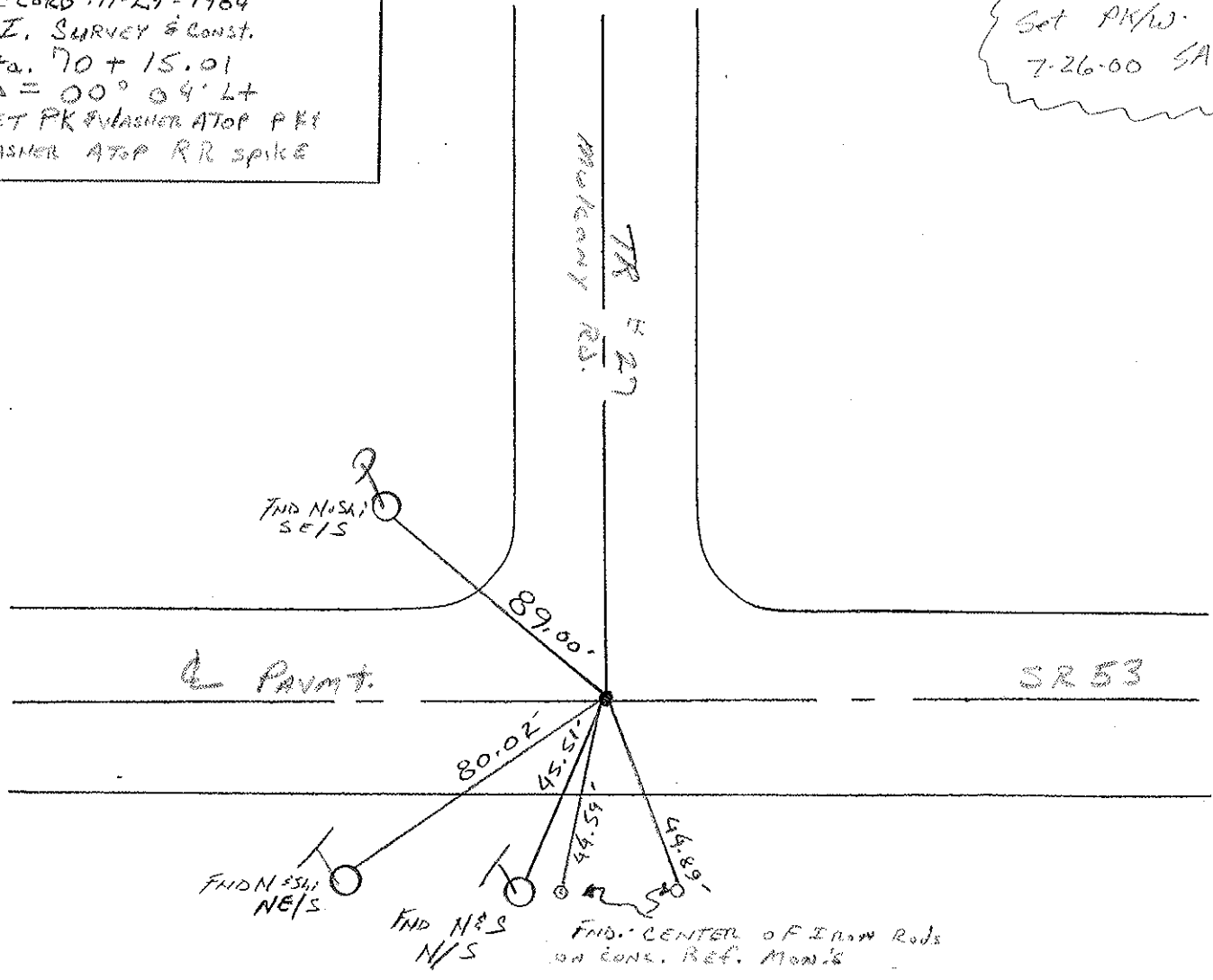
12" TO RT EDGE PAVEMENT

S.L.M. 70+36 ±



RECORD 111-29-1984
 P.I. SURVEY & CONST.
 Sta. 70+15.01
 $\Delta = 00^\circ 04' \text{LT}$
 SET PK & WASHER ATOP PKT
 WASHER ATOP RR SPIKE

Set PK/W.
 7-26-00 SAH



O.D.O.T. DISTRICT 2 SURVEY OFFICE

PERSONNEL

REFERENCE NO. 6

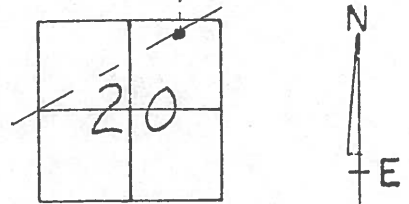
SHEET 6 OF 17

NOTES CHENEY
 H.C. RIPPLE
 R.C. BARBOUR
GEYMAN

DATE 6-22-1993
 WEATHER SUNNY
 TEMP. 80°

ROUTE S.R.#53
 COUNTY OTTAWA
 TOWNSHIP BAY
 SECTION 20
T 6 N R 16 E

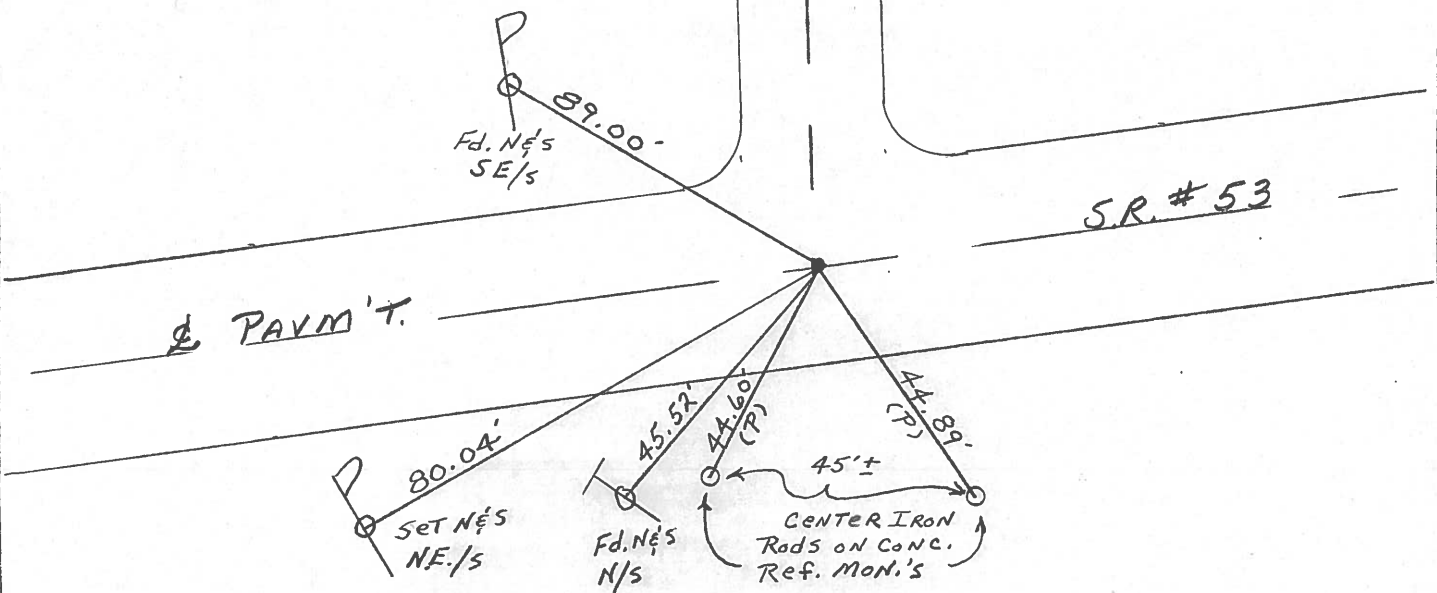
TYPE MONUMENT Fd. P.K. & Washer
~~ON SURFACE~~ - BELOW 2" deep
~~LEFT - C. PAV'T.~~ - ~~RIGHT ON C. PAVM'T.~~
12' TO RT. EDGE PAVEMENT
 S.L.M. 70+36 ±



Record: 11-29-1984
P.I. Survey & Const.
STA. 70+15.01
Δ = 00° 04' LT.
Set P.K. & Washer ATop
P.K. & Washer ATop RR. spike

NOTE: Set P.K. &
Washer 8-05-1993
J.L.R.

TR.# 27



County Ottawa S.R. #53

Township Bay

Section 20

T6N, R16E

Personnel Cronin

Ripple

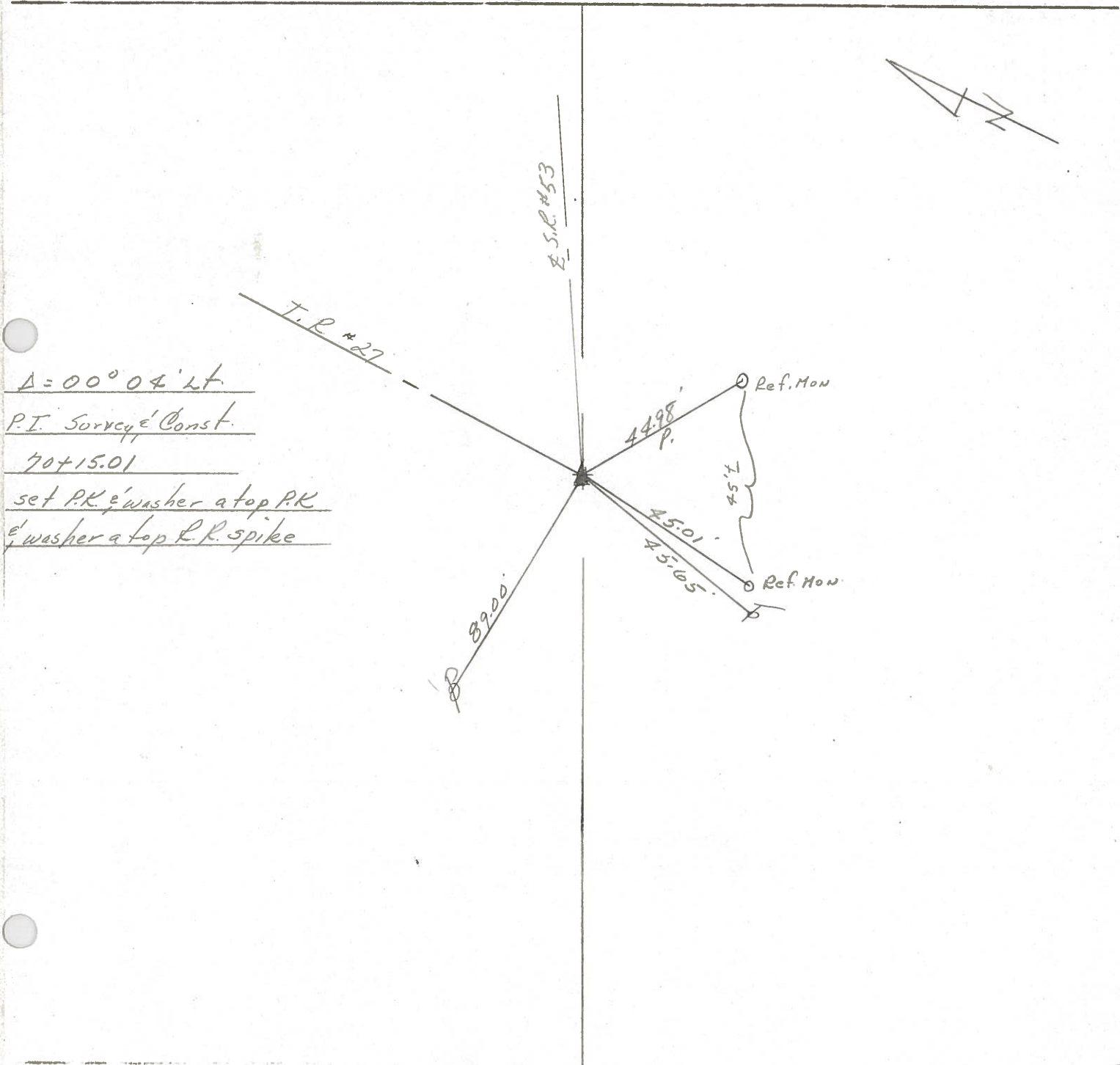
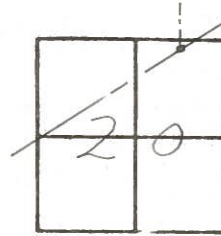
Geyman

6

Date Drawn 11/29/84 11/30/84

Weather overcast

Temp. 40°



$\Delta = 00^{\circ} 04' Lt$

P.I. Survey & Const.

70+15.01

set P.K. & washer at top P.K.
& washer at top R.R. spike

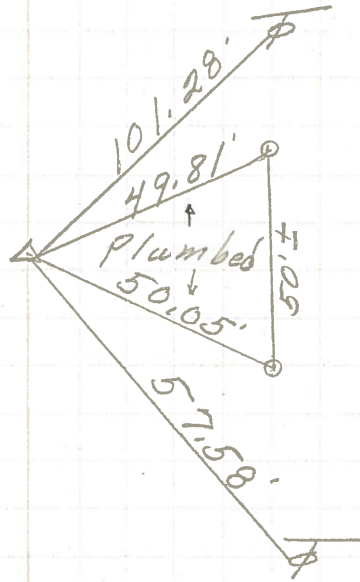
PERSONNEL	TITLE	PERSONNEL	TITLE

COUNTY Ottawa DATE 4-18-72
 S. R. 53 WEATHER Fair
 SEC. 20 & 16 TEMP. 50°

DESCRIPTION Bay Twp. LEFT CENTER LINE RIGHT JOB NO. _____

P.I. & survey & const.
 104+17.82
 $\Delta = 0^{\circ}16' Lt.$
 small R.R. spk.

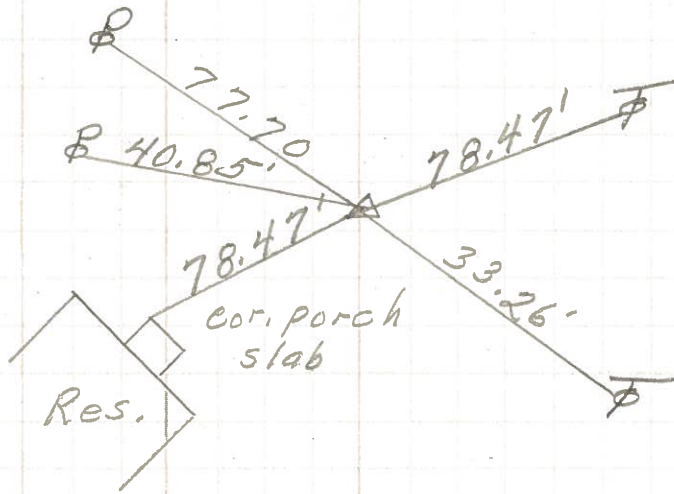
8



2- CONC. MON.

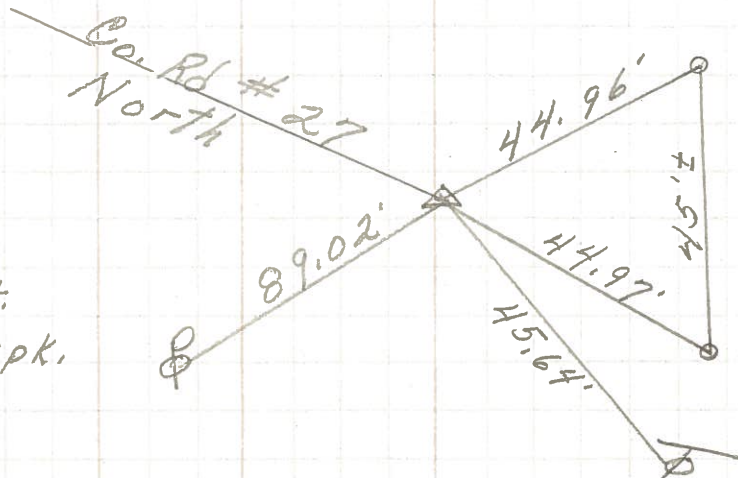
P.I. & survey & const.
 86+17.93
 $\Delta = 0^{\circ}02' Rt.$
 small R.R. spk.

7



P.I. & survey & const.
 70+15.01
 $\Delta = 0^{\circ}04' Lt.$
 small R.R. spk.

6



2- CONC-MON

PERSONNEL TITLE PERSONNEL TITLE

Schneider
Mossler
Redding
Potts J.

COUNTY Ottawa DATE 7-11-68

S. R. 53 WEATHER Fair

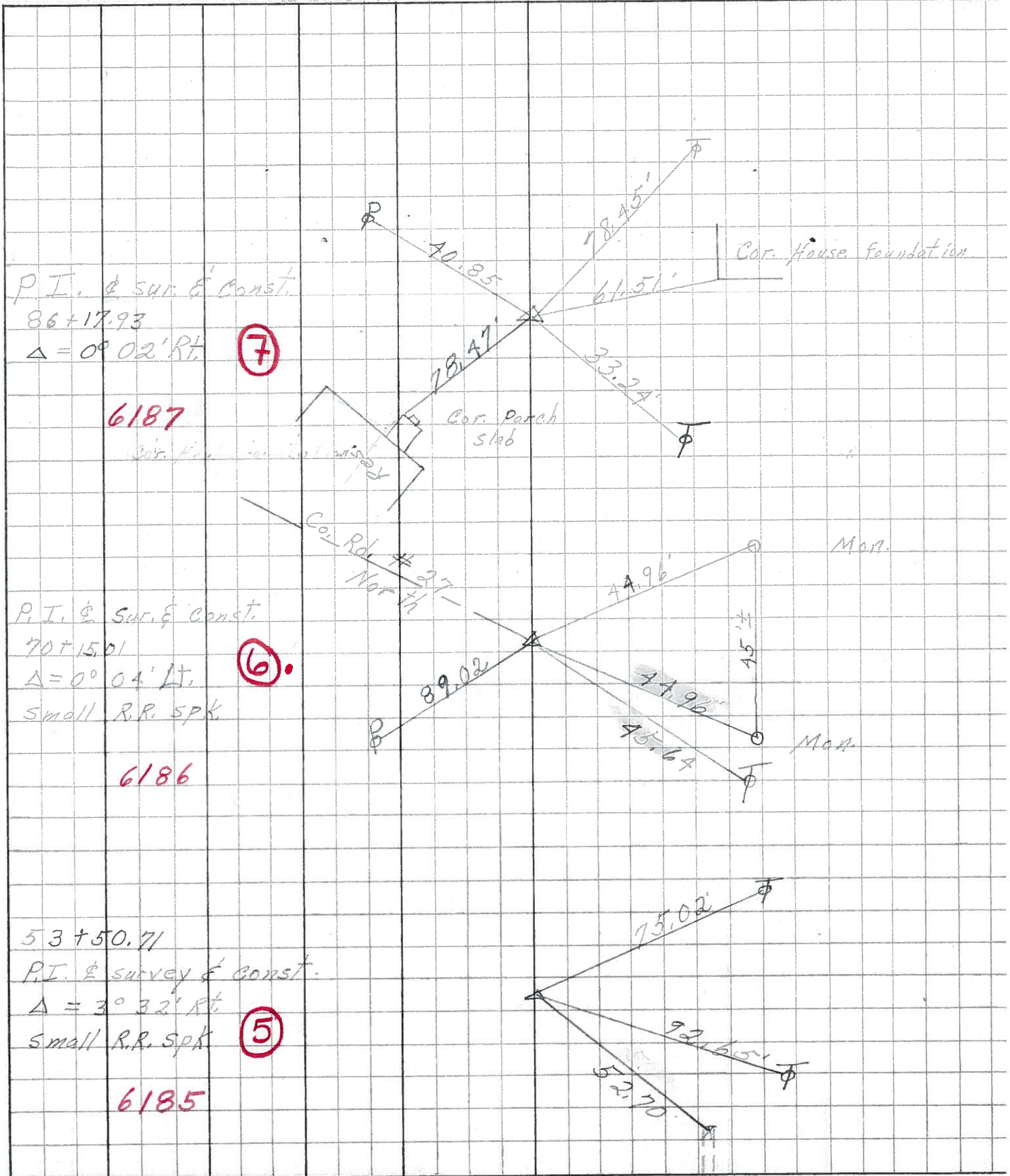
SEC. San. Co. Line-North TEMP. 75°

DESCRIPTION

Ties for Control Points

JOB NO.

LEFT CENTER LINE RIGHT



P.I. & sur. & Const.
86+17.93
 $\Delta = 0^\circ 02' \text{ Rt.}$

7

6187

P.I. & sur. & Const.
70+15.01
 $\Delta = 0^\circ 04' \text{ Lt.}$
Small R.R. spk.

6

6186

53+50.71
P.I. & survey & Const.
 $\Delta = 3^\circ 32' \text{ Rt.}$
Small R.R. spk.

5

6185