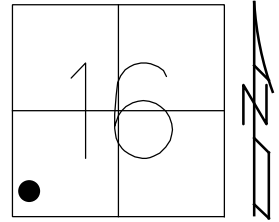


O.D.O.T. DISTRICT 2 SURVEY OFFICE (USE ONLY)

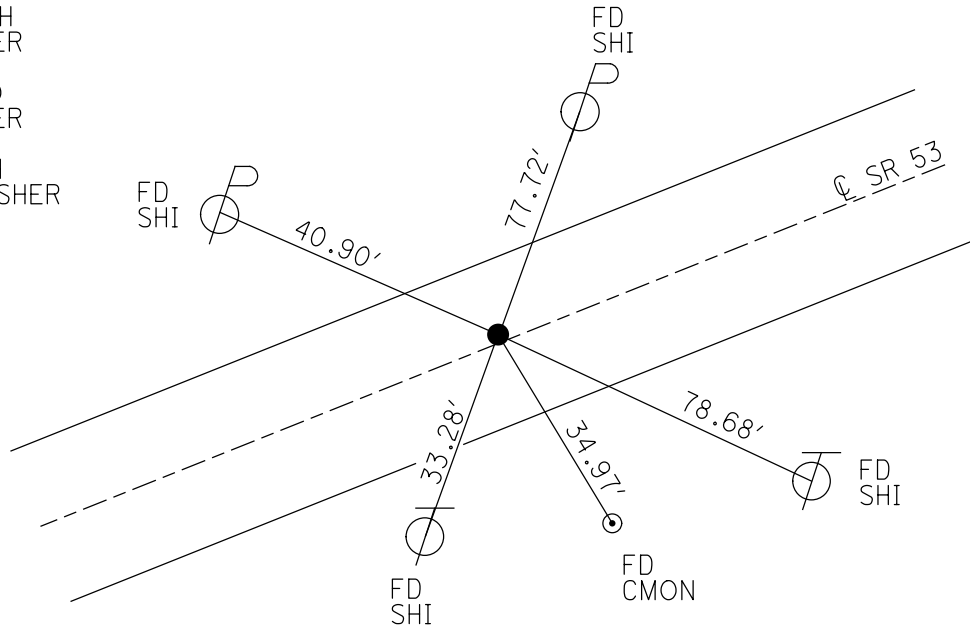
PERSONNEL _____ REFERENCE NO. 7 SHEET 8 OF 20
 NOTES LEU DATE 3/23/17 ROUTE SR 53
 H.C. HOMAN WEATHER SUNNY COUNTY OTTAWA
 R.C. LEU TEMP. 30° TOWNSHIP BAY
 SECTION 16
 DWG BY MILLER PID 92368 T 6 N R 16 E

TYPE MONUMENT P.K./WASHER
~~ON SURFACE~~ - BELOW 3"
 OFFSET Q PAVEMENT 0.8' LT : ~~RT~~
12.5' TO RT EDGE PAVEMENT
 STATION: 86+22.04

HORZ. DATUM: NAD83 (2011) GEOID: 2012A
 GRID: NORTHING: 658674.688 EASTING: 1823320.175



RECORD: P.I.
 STA 86+17.93
 $\Delta = 00^\circ 02' RT$
 SET PK/WASHER
 ATOP PK/WASHER
 ATOP R.R. SPIKE
 11-29-84
 FD PK/WASHER
 5-30-00, BC
 FD PK/WASHER
 3" DOWN
 7-26-00, SAH
 FD PK/WASHER
 REF7
 6-22-17, JFO
 FD PK/WASHER
 3" DOWN
 3-23-17, DCH
 SET MAG/WASHER
 REF7
 5-8-18, JLL



O.D.O.T. DISTRICT 2 SURVEY OFFICE

PERSONNEL

REFERENCE NO. 2

SHEET 7 OF 17

NOTES Brown

H.C. CORDES

DATE 5-30-00

ROUTE SR 53

R.C. ROUSOS

WEATHER SUNNY

COUNTY OTTAWA

P. KARGER

TEMP. 80°F

TOWNSHIP BAY

SECTION 16

T6 N R 16 E

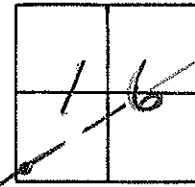
TYPE MONUMENT P.K. WASHER

ON SURFACE - ~~BELOW~~ ON SURFACE

LEFT- & PAV'T. - RIGHT 0.5'

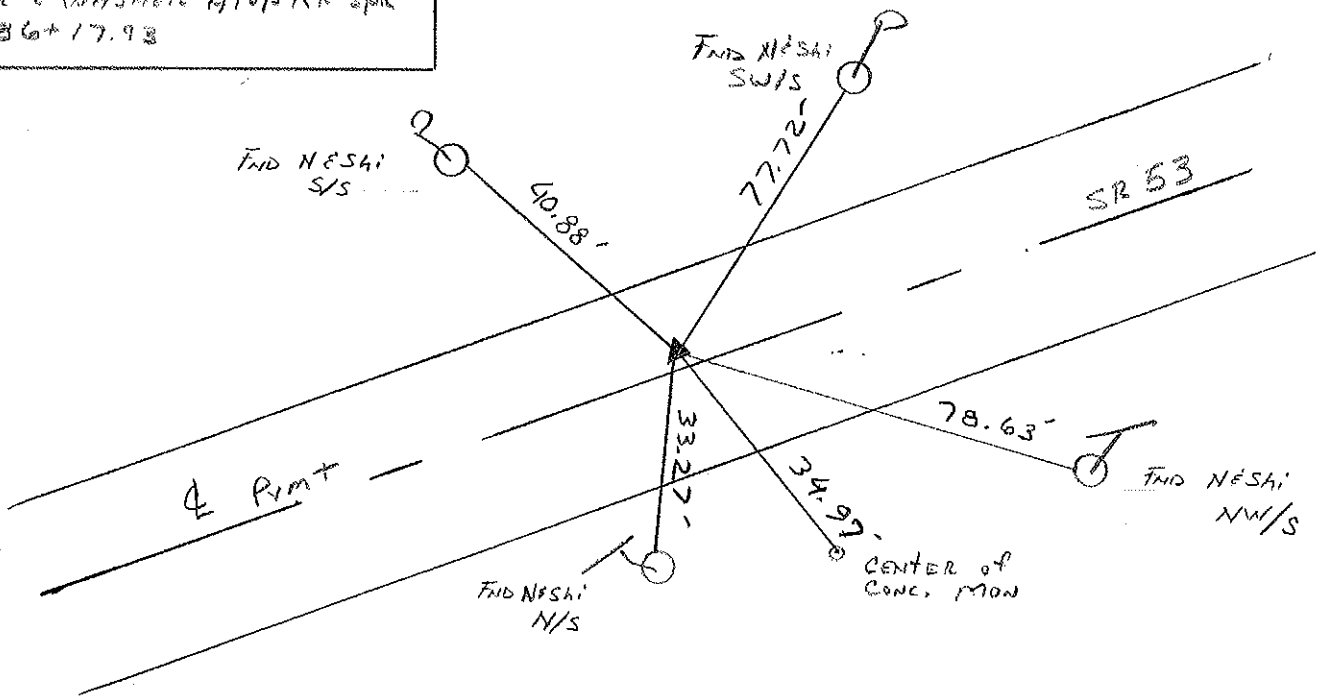
12.5' TO RT EDGE PAVEMENT

S.L.M. 86+45±



RECORD 11-29-1984
 $\Delta = 0^\circ 02' RT$
 P.I. SURVEY & CONST.
 SET PK & WASHER AT OA
 PK & WASHER AT OP RR 2pk
 86+17.98

FD PK/W 3"
 deep 7-26-00 SAH



O.D.O.T. DISTRICT 2 SURVEY OFFICE

PERSONNEL

REFERENCE NO. 7

SHEET 7 OF 17

NOTES CHENEY

H.C. RIPPLE

R.C. BARBOUR

GEYMAN

DATE 6-22-1993

WEATHER Sunny

TEMP. 80°

ROUTE SR. #53

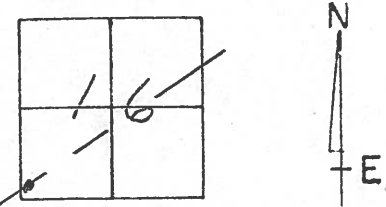
COUNTY OTTAWA

TOWNSHIP BAY

SECTION 16

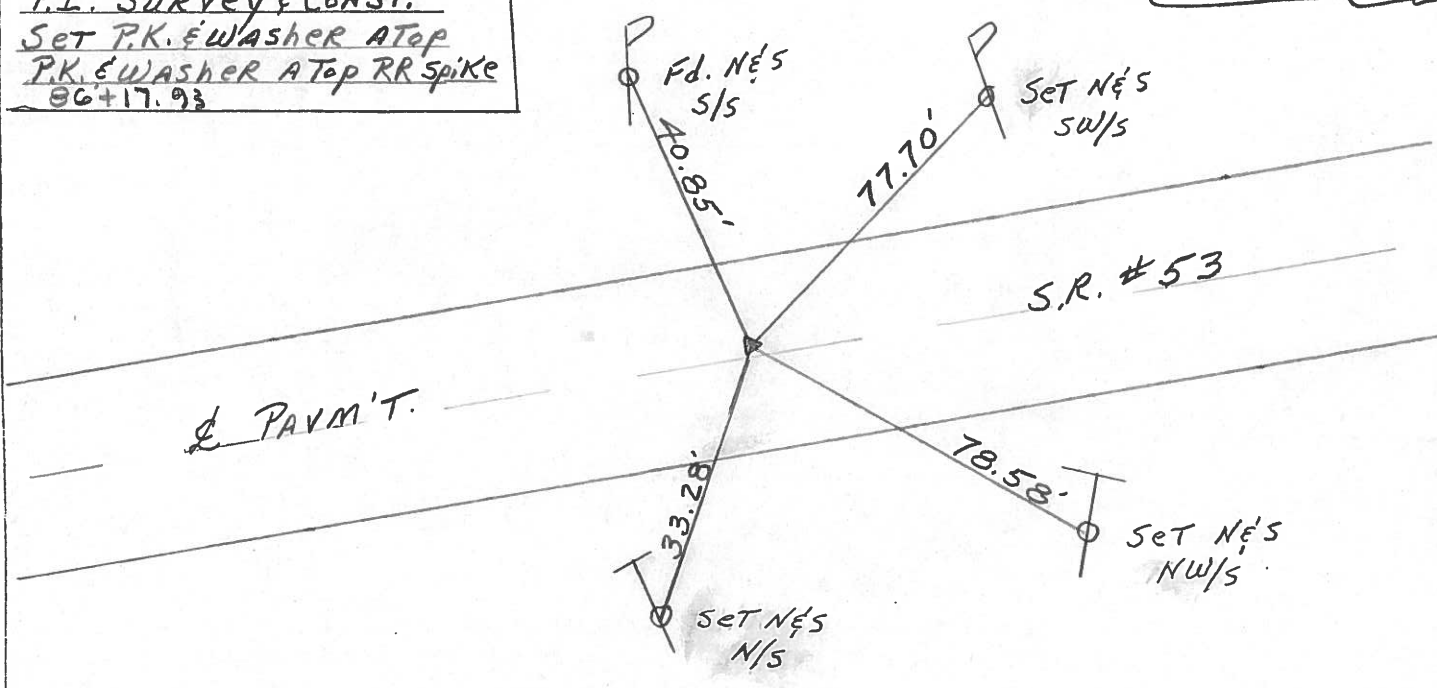
T6 N R 16 E

TYPE MONUMENT Fd. P.K. Washer
 ON SURFACE - ~~BELOW~~ ON SURFACE
 LEFT - 0 PAV'T. - RIGHT 0.5'
12.5 TO RT. EDGE PAVEMENT
 S.L.M. 86 + 45 ±



Record: 11-29-1984
Δ = 00° 02' RT.
P.L. SURVEY & CONST.
Set P.K. Washer ATop
P.K. Washer ATop RR spike
86 + 17.93

NOTE: Set P.K. Washer
8-05-1993 J.L.R.



O.D.O.T. DISTRICT 2 SURVEY OFFICE

PERSONNEL _____

REFERENCE NO. 7

SHEET 7 OF _____

NOTES Cronin

H.C. Ripple

R.C. Geyman

DATE Drawn 11/29/84

WEATHER overcast

TEMP. 46°

ROUTE 53

COUNTY Ottawa

TOWNSHIP Bay

SECTION 16

T 6 N R 16 E

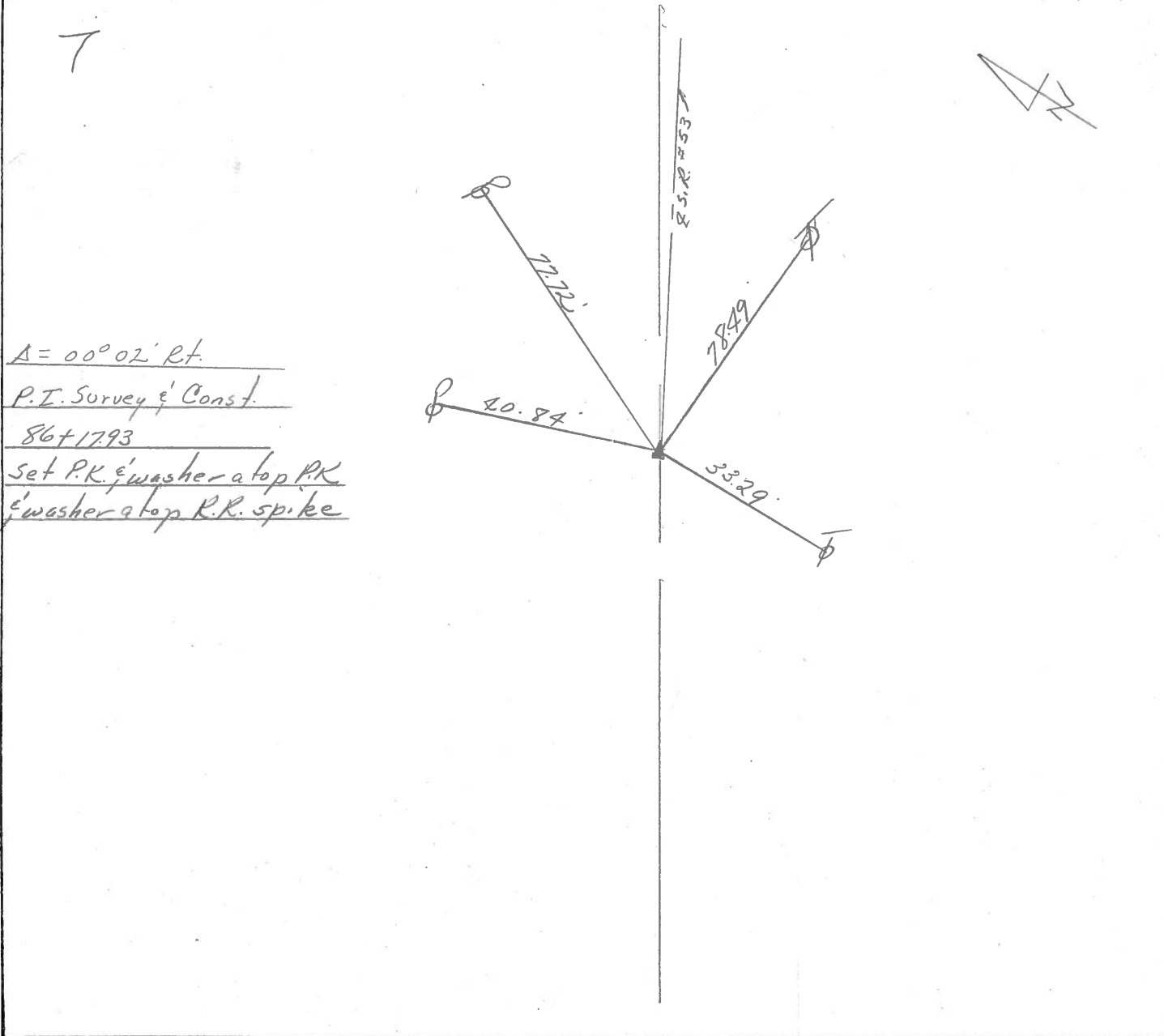
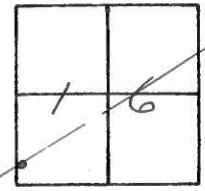
TYPE MONUMENT R.R. spike

ON SURFACE - BELOW below

LEFT - ☉ PAV'T. - RIGHT ☿

TO _____ EDGE PAVEMENT

S.L.M. _____



7

A = 00° 02' Rt.

P.I. Survey & Const.

86+1793

Set P.K. & washer atop P.K.

& washer atop R.R. spike

PERSONNEL TITLE PERSONNEL TITLE

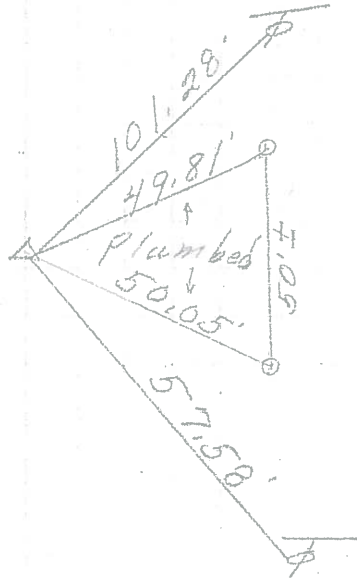
COUNTY Ottawa DATE 4-18-72

S. R. 53 WEATHER Fair

SEC. 20 & 16 TEMP. 50°

DESCRIPTION Bay Twp. LEFT CENTER LINE RIGHT JOB NO.

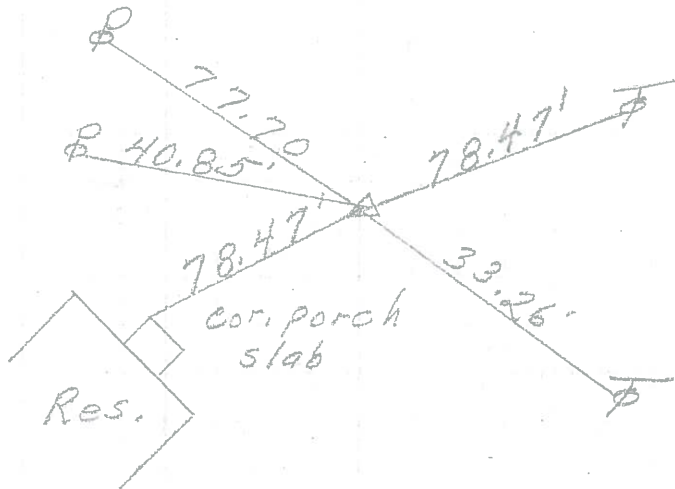
P.I. & survey & const.
104+17.82
 $\Delta = 0^{\circ}16' Lt.$
small R.R. spk.



2- Conc. Mon.

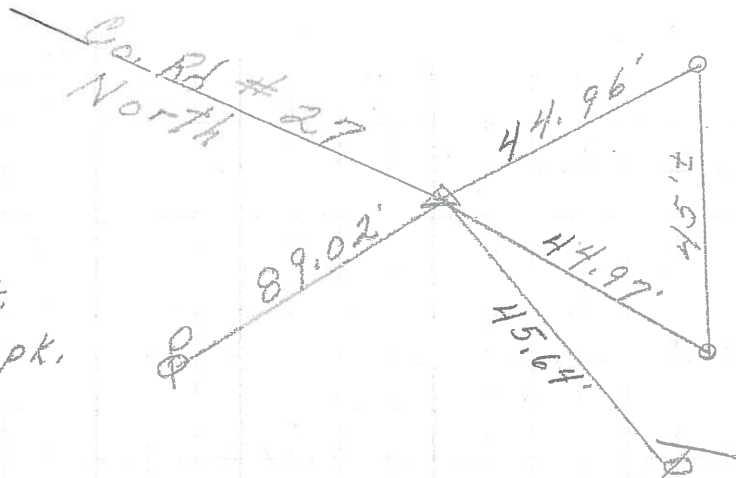
8

P.I. & survey
& const.
86+17.93
 $\Delta = 0^{\circ}02' Rt.$
small R.R. spk.



7

P.I. & survey
& const.
70+15.01
 $\Delta = 0^{\circ}04' Lt.$
small R.R. spk.



2- Conc- Mon

6

PERSONNEL	TITLE	PERSONNEL	TITLE	COUNTY	DATE
Schneider				Ottawa	7-11-68
Mosser				S. R. 53	WEATHER Fair
Redding				SEC. San. Co. Line - North	TEMP. 75°
Putts J					

DESCRIPTION Ties for Control Points JOB NO. _____

