

O.D.O.T. DISTRICT 2 SURVEY OFFICE (USE ONLY)

PERSONNEL

REFERENCE NO. 9

SHEET 10 OF 20

NOTES LEU

DATE 3/24/17

ROUTE SR 53

H.C. HOMAN

WEATHER CLOUDY

COUNTY OTTAWA

R.C. LEU

TEMP. 53°

TOWNSHIP BAY

SECTION 16

DWG BY MILLER PID 92368

T 6 N R 16 E

TYPE MONUMENT P.K./WASHER

ON SURFACE - ~~BELOW~~ 2"

OFFSET CL PAVEMENT ON LT : RT

11.5' TO RT EDGE PAVEMENT

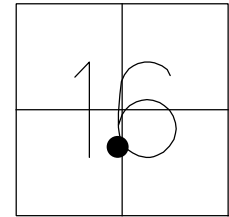
STATION: 115+22.23

HORZ.DATUM: NAD83 (2011)

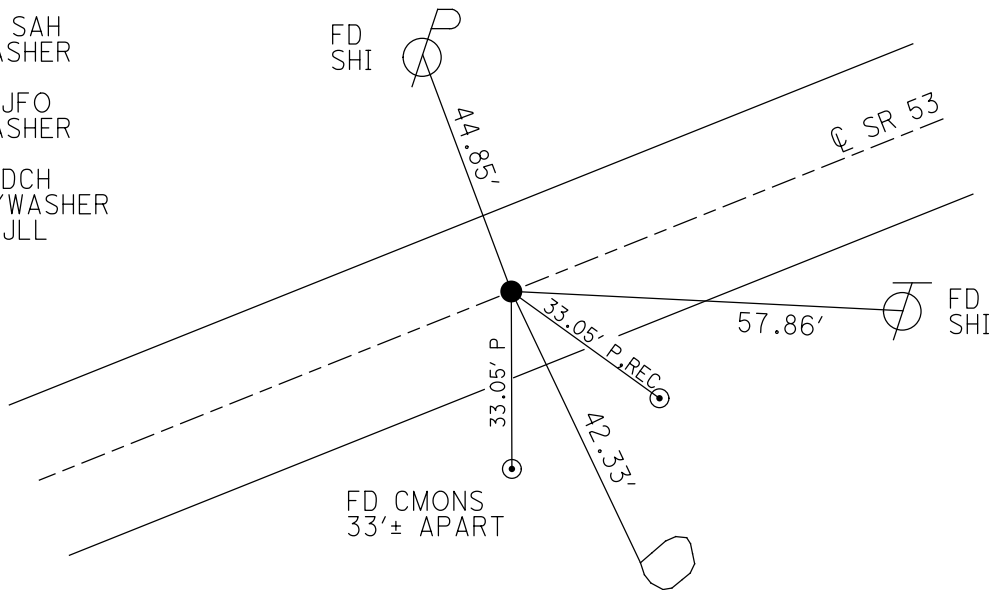
GEOID: 2012A

GRID: NORTHING: 660196.072

EASTING: 1825789.250



RECORD: P.I.
 STA 115+17.67
 $\Delta = 00^\circ 17' RT$
 SET PK/WASHER
 ATOP PK/WASHER
 ATOP R.R. SPIKE
 11-29-84
 FD PK/WASHER
 5-31-00, BC
 FD PK/WASHER
 3" DOWN
 7-27-00, SAH
 FD PK/WASHER
 REF9
 6-22-15, JFO
 FD PK/WASHER
 2" DOWN
 3-24-17, DCH
 SET MAG/WASHER
 12-12-18, JLL



3RD ROCK FROM THE EAST
 WLY EDGE OF THE N FACE
 OF LG ROCK $\pm 3"$ UP

O.D.O.T. DISTRICT 2 SURVEY OFFICE

PERSONNEL

REFERENCE NO. 9

SHEET 9 OF 17

NOTES CORDES

H.C. VAN DUSEN

R.C. BROWN

DATE 5/31/00

WEATHER SUNNY

TEMP. 80°

ROUTE SR#53

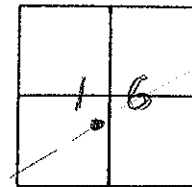
COUNTY OTTAWA

TOWNSHIP RAY

SECTION 16

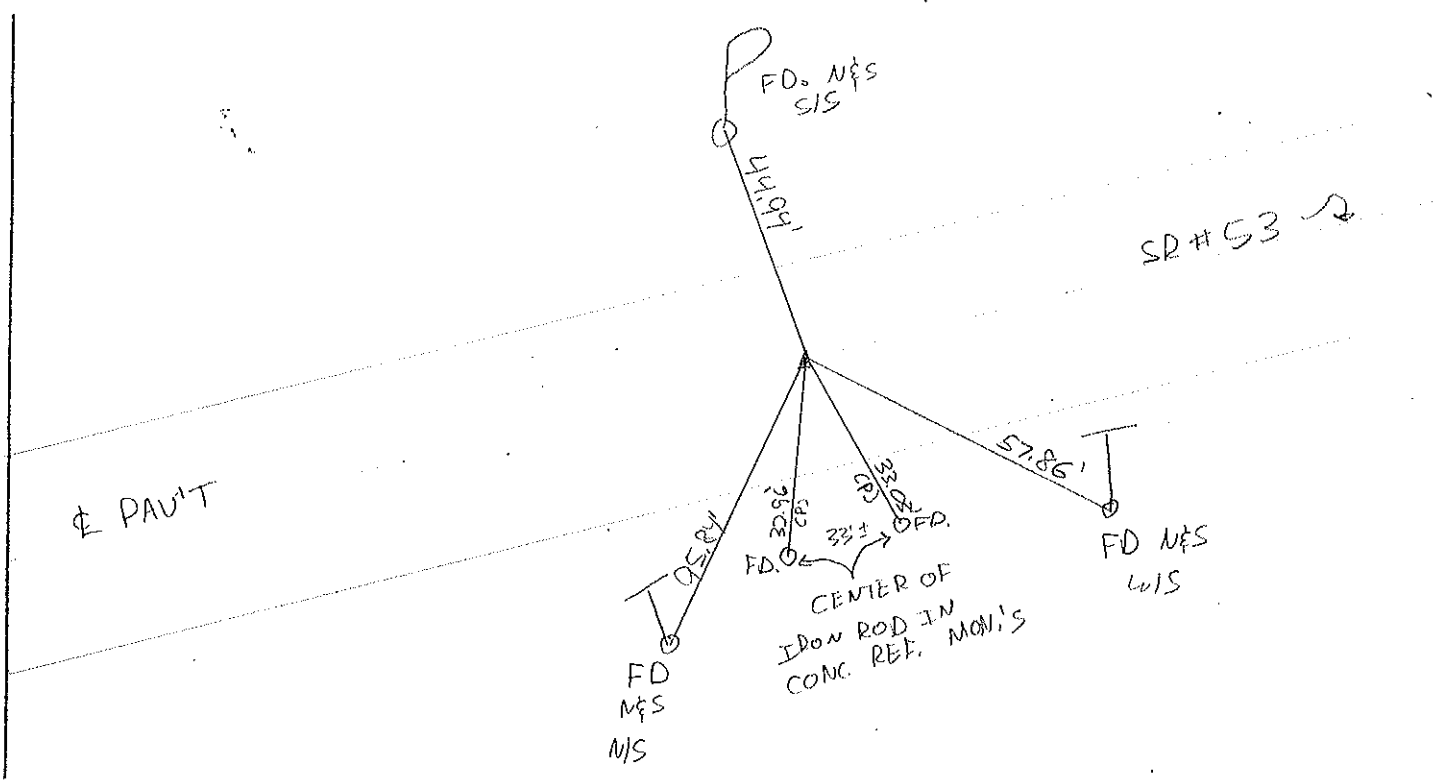
T. 6 N. R. 16 E.

TYPE MONUMENT FD, P.K. & WASHER
 ON SURFACE - ~~BELOW~~ ON SURFACE
~~LEFT - & PAVT.~~ - RIGHT ON & PAVT.
11.5' TO RT. EDGE PAVEMENT
 S.L.M. 115+53±



RECORD: 11-29-1984
 P.I. SURVEY & CONST.
 Δ = 00° 17' RT.
 STA. 115+17.67
 SET PK & WASHER ATOP P.K.
 & WASHER ATOP RD. SPIKE

Fd PK'd 3" deep
7-27-00 SAH



O.D.O.T. DISTRICT 2 SURVEY OFFICE

PERSONNEL

REFERENCE NO. 9

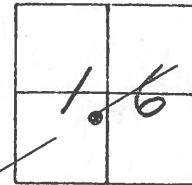
SHEET 9 OF 17

NOTES CHENEY
 H.C. RIPPLE
 R.C. BARBOUR
GEYMAN

DATE 6-22-1993
 WEATHER SUNNY
 TEMP. 80°

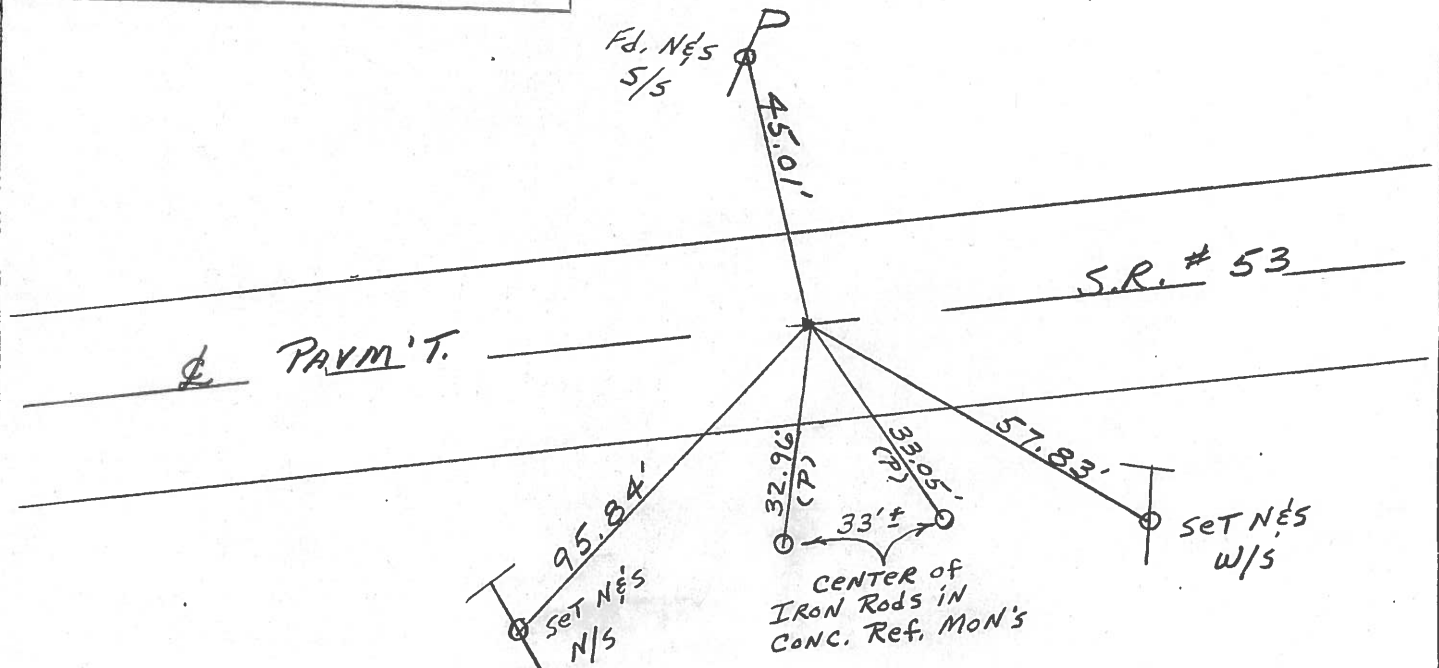
ROUTE SR#53
 COUNTY OTTAWA
 TOWNSHIP BAY
 SECTION 16
T6NR16E

TYPE MONUMENT Fd. P.K. & Washer
 ON SURFACE - ~~BELOW~~ ON SURFACE
~~LEFT - & PAV'T. - RIGHT~~ ON & PAVM'T.
11.5' TO RT. EDGE PAVEMENT
 S.L.M. 115+53 ±



Record: 11-29-1984
P.L. & Survey & Const.
Δ = 00° 17' RT.
STA. 115+17.67
Set PK & Washer ATOP P.K.
& Washer ATOP RR. SPIKE

NOTE: Set P.K. & Washer
8-05-1993 J.L.R.



O.D.O.T. DISTRICT 2 SURVEY OFFICE

PERSONNEL

REFERENCE NO. 9

SHEET 9 OF

NOTES Cronin

H.C. Ripple

R.C. Geyman

DATE Drawn 11/29/84

WEATHER overcast

TEMP. 46°

ROUTE #53

COUNTY Ottawa

TOWNSHIP Bay

SECTION 16

T6 N R 16 E

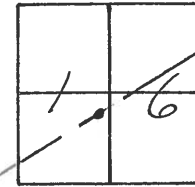
TYPE MONUMENT R.R. spike

ON SURFACE - BELOW below

LEFT - ☉ PAV'T. - RIGHT ☉

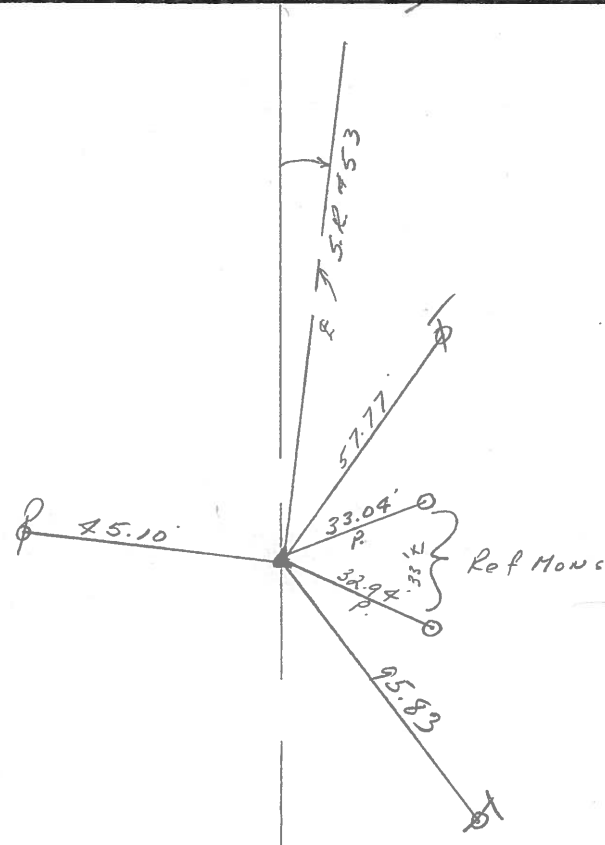
 TO EDGE PAVEMENT

S.L.M.



9

$\Delta = 00^{\circ}17'$ Rt.
P.I. & Survey & Const.
115+17.67
Set P.K. & washer atop P.K.
& washer atop R.R. spike



PERSONNEL TITLE PERSONNEL TITLE

COUNTY Ottawa DATE 4-18-72

S. R. 53 WEATHER Fair

SEC. 16 TEMP. 50°

DESCRIPTION Bay Twp. LEFT CENTER LINE RIGHT JOB NO.

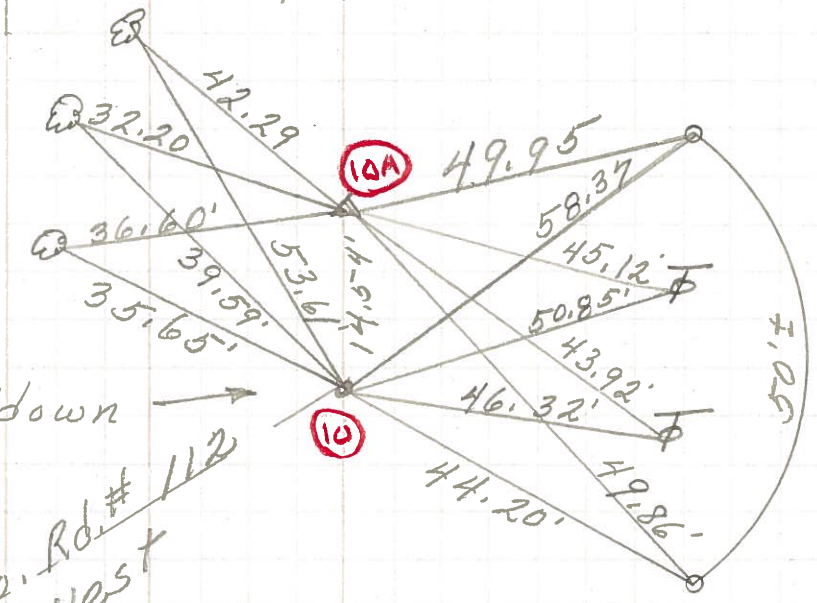
3 - 26" Maples

P.I. & sur. & const
127+06.59
 $\Delta = 0'06" Rt.$

Roofing Nail 3" down
set by county
survey crew

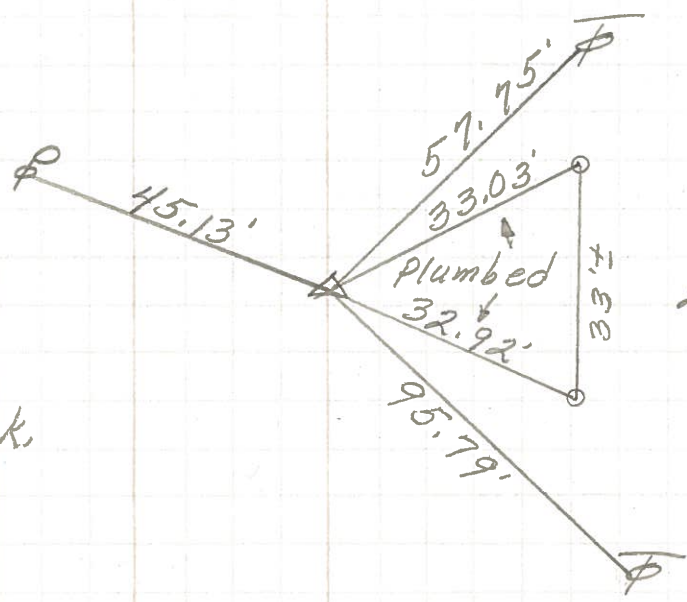
Co. Rd. # 112
West

10



P.I. & survey
& Const.
115+17.67
 $\Delta = 0'17" Rt.$
small R.R. spk.

9.



PERSONNEL	TITLE	PERSONNEL	TITLE	COUNTY	DATE
Schneider				Ottawa	7-11-68
Mosser				S. R. 53	WEATHER Fair
Redding				SEC. San. Co. Line-North	TEMP. 75°
Potts					

DESCRIPTION Ties for Control Points JOB NO. _____

