

O.D.O.T. DISTRICT 2 SURVEY OFFICE (USE ONLY)

PERSONNEL _____ REFERENCE NO. 10 SHEET 11 OF 20
 NOTES LEU DATE 3/24/17 ROUTE SR 53
 H.C. HOMAN WEATHER CLOUDY COUNTY OTTAWA
 R.C. LEU TEMP. 58° TOWNSHIP BAY
 DWG BY MILLER PID 92368 SECTION 16
 T 6 N R 16 E

TYPE MONUMENT P.K./WASHER

ON SURFACE - ~~BELOW~~ ON

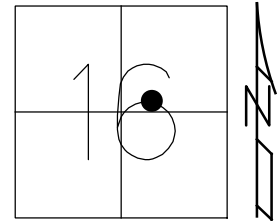
OFFSET \odot PAVEMENT 0.5' LT : ~~RT~~

12.5' TO RT EDGE PAVEMENT

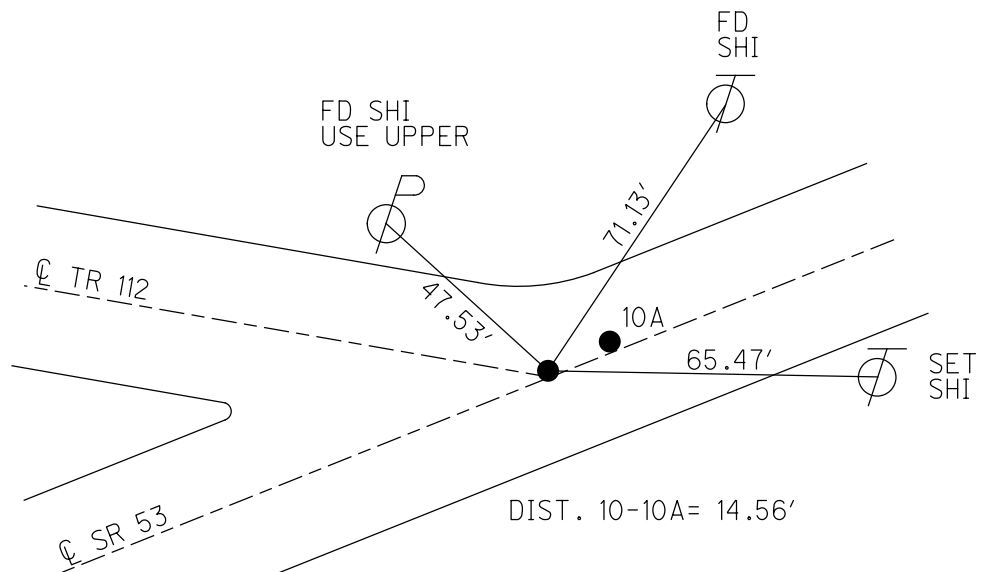
STATION: 126+96.52

HORZ. DATUM: NAD83 (2011) GEOID: 2012A

GRID: NORTHING: 660810.223 EASTING: 1826790.276



RECORD: P.I.
 STA 127+06.59
 $\Delta=00^{\circ}06'$ RT
 SET PK/WASHER
 ATOP PK/WASHER
 ATOP R.R. SPIKE
 11-29-84
 SET PK/WASHERS
 8-5-93, RCC
 FD PK/WASHER
 5-31-00, BC
 SET PK/WASHER
 7-26-00, SAH
 FD PK/WASHER
 REF10
 6-23-15, JFO
 FD PK/WASHER
 3-24-17, DCH
 SET MAG/WASHER
 NEWREF10
 12-12-18, JLL



O.D.O.T. DISTRICT 2 SURVEY OFFICE

PERSONNEL

REFERENCE NO. 10

SHEET 10 OF 17

NOTES CORDES

H.C. VAN DUSEN

R.C. BROWN

DATE 5/31/00

WEATHER FAIR

TEMP. 80°

ROUTE #53

COUNTY OTTAWA

TOWNSHIP BAY

SECTION 16

T.6 N R.16 E

TYPE MONUMENT P.K.'S/WASHERS

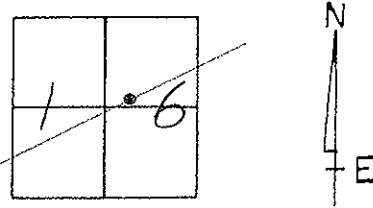
ON SURFACE - ~~BELOW~~ ON SURFACE

LEFT-~~C~~ PAV'T. - ~~RIGHT~~ "A"=0.5', "B"=1'

"A" = 12.5'
"B" = 13'

JORT. EDGE PAVEMENT

S.L.M. 127+30



RECORD: 11-29-84 "PT. B"

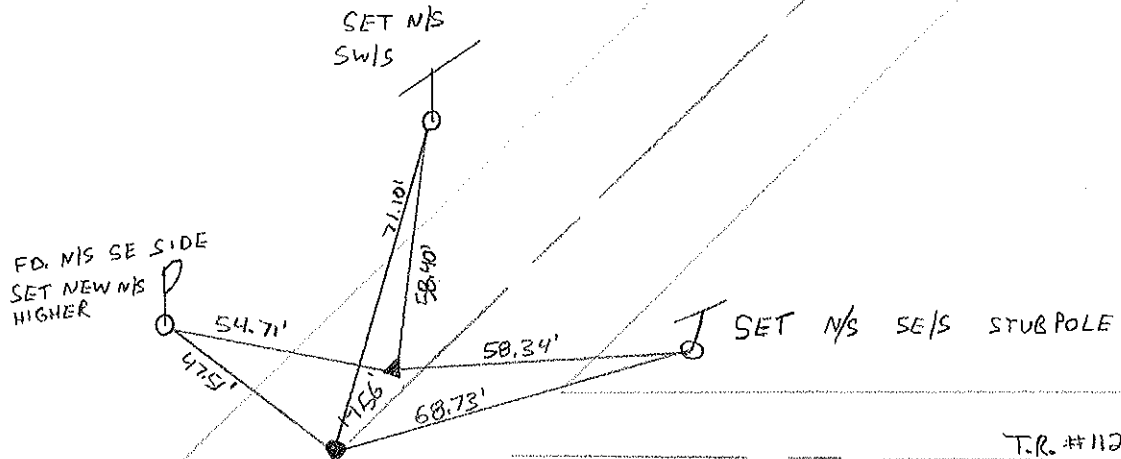
P.I. SURVEY & CONST. STA. 127+06.59

$\Delta = 00^{\circ}06'$ RT.

SET PK/WASHER ATOP PK/WASHER
ATOP R.R. SPIKE.

PT. "A"

SET PK/WASHER ATOP
NAIL SPIKE BY COUNTY



SET PK/WASHER AT BOTH
PTS. 7-26-00 SAH

SET PK'S/WASHERS 8-5-1992 RCC

O.D.O.T. DISTRICT 2 SURVEY OFFICE

PERSONNEL

REFERENCE NO. 10

SHEET 10 OF 17

NOTES CHENEY

H.C. RIPPLE

DATE 6-22-1993

ROUTE #53

R.C. BARBOUR

WEATHER FAIR

COUNTY OTAWA

GEYMAN

TEMP. 80°

TOWNSHIP BAY

SECTION 16

T 6 N R 16 E

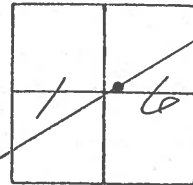
TYPE MONUMENT PK'S/WASHERS

ON SURFACE - ~~BELOW~~ ON

LEFT - 0 PAV'T. - RIGHT "A" = 0.5'

"A" = 12.5'
"B" = 13' TO R.T. EDGE PAVEMENT

S.L.M. 127+30



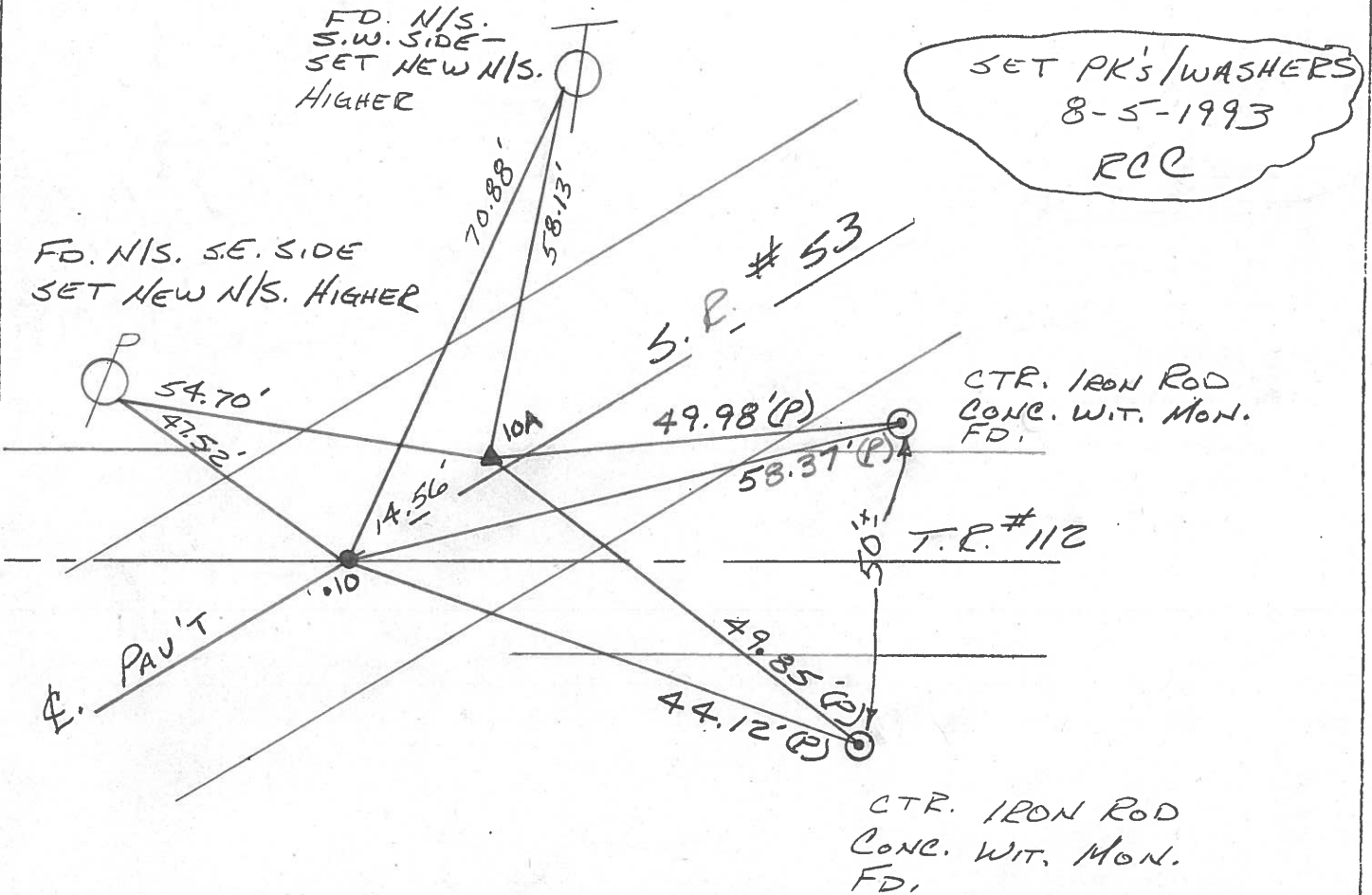
RECORD: 11-29-1984 "Pt. B"

P.I. SURVEY & CONST. STA. 127+06.59
 $\Delta = 00^\circ 06'$ RT.

SET PK/WASHER ATOP PK/WASHER
ATOP R.P. SPIKE

Pt. "A"

SET PK/WASHER ATOP
NAIL SPIKE BY COUNTY



O.D.O.T. DISTRICT 2 SURVEY OFFICE

PERSONNEL

REFERENCE NO. 10

SHEET 10 OF

NOTES Cronin

H.C. Ripple

R.C. Geyman

DATE Drawn 11/29/84

WEATHER overcast

TEMP. 46°

ROUTE #53

COUNTY Ottawa

TOWNSHIP Bay

SECTION 16

T6 N R 16 E

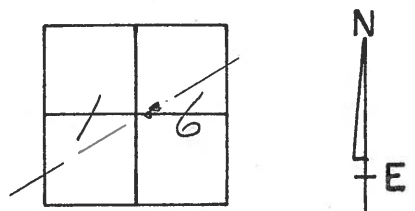
TYPE MONUMENT R.R. spike

ON SURFACE - BELOW below

LEFT - ☉ PAV'T. - RIGHT ☉

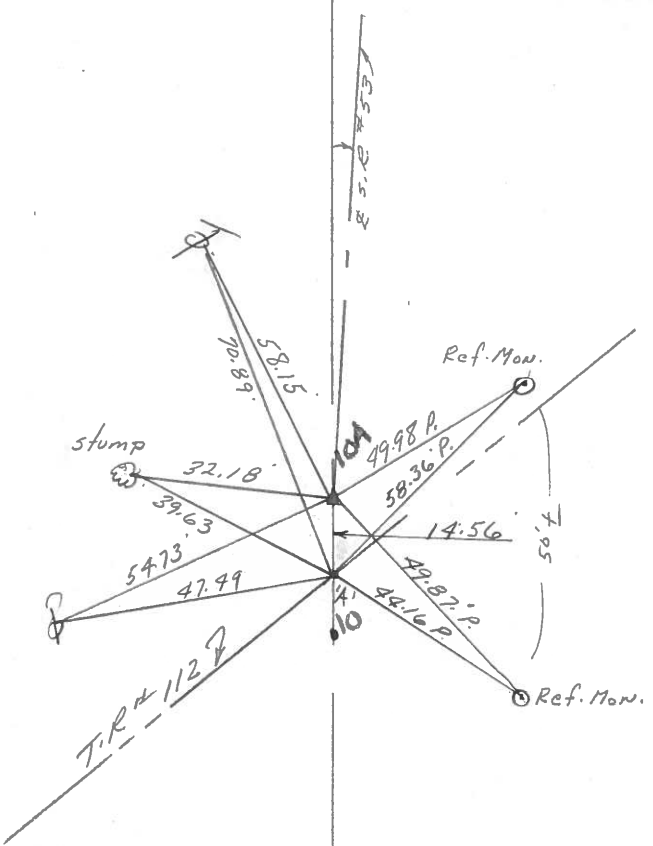
 TO EDGE PAVEMENT

S.L.M.



10

A = 00°06' Rt.
P.E. Survey & Const.
127+06.59
Set P.K. & washer atop
P.K. & washer atop R.R. spike



'A' set P.K. & washer atop
nail spike by County

PERSONNEL	TITLE	PERSONNEL	TITLE	COUNTY	DATE
				Ottawa	4-18-72
				S. R. 53	WEATHER Fair
				SEC. 16	TEMP. 50°

DESCRIPTION Bay Twp. LEFT CENTER LINE RIGHT JOB NO.

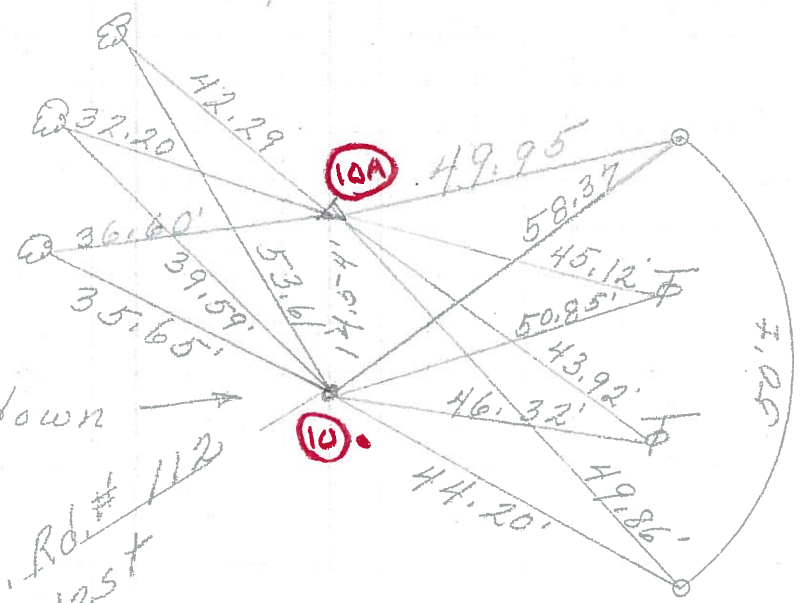
3 - 26" Maples

P.I. & sur. & const
127+06.59
Δ = 0'06" Rt.

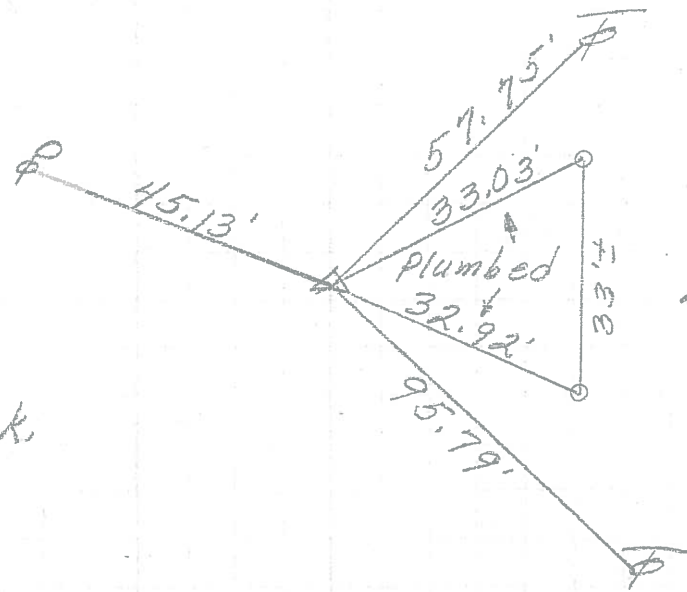
Roofing Nail 3" down
set by County
survey crew

Co. Rd. # 112
west

10



P.I. & survey
& Const.
115+17.67
Δ = 0'17" Rt.
small R.R. spk.



2 - Mon.

9