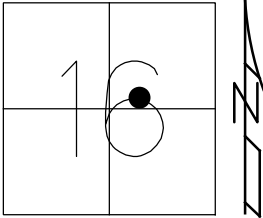


O.D.O.T. DISTRICT 2 SURVEY OFFICE (USE ONLY)

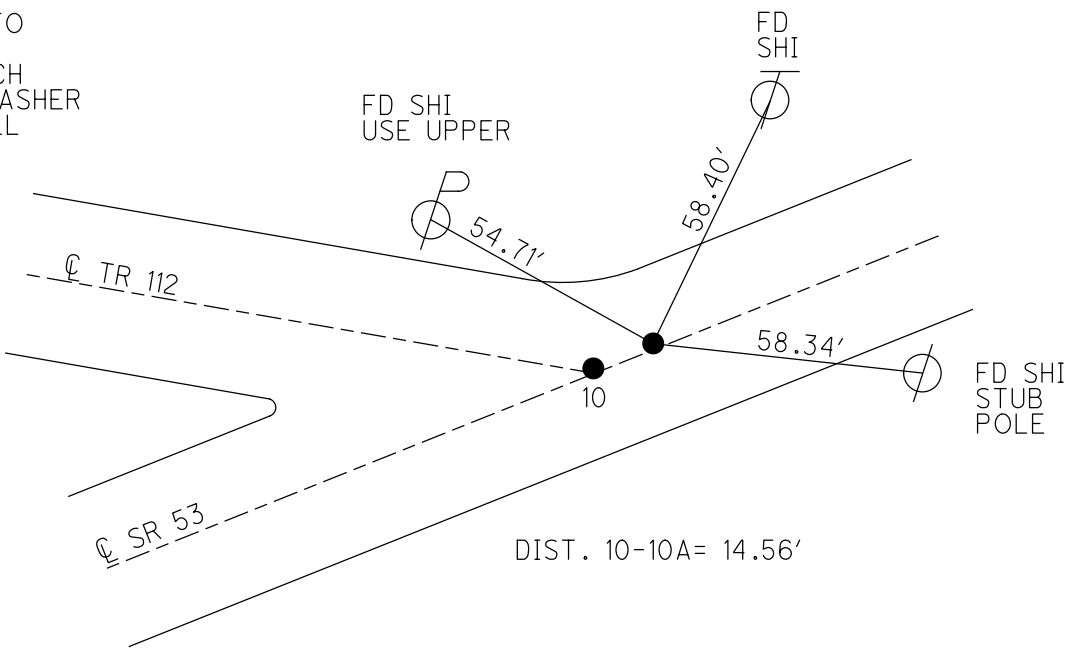
PERSONNEL _____ REFERENCE NO. 10 A SHEET 12 OF 20
 NOTES LEU DATE 3/24/17 ROUTE SR 53
 H.C. HOMAN WEATHER CLOUDY COUNTY OTTAWA
 R.C. LEU TEMP. 53° TOWNSHIP BAY
 DWG BY MILLER PID 92368 SECTION 16
 T 6 N R 16 E

TYPE MONUMENT FD PK/WASHER
 ON SURFACE - ~~BELOW~~ ON _____
 OFFSET \odot PAVEMENT 1' LT : ~~RT~~
13' TO RT EDGE PAVEMENT
 STATION: 127+11.17



HORIZ.DATUM: NAD83 (2011) GEOID: 2012A
 GRID: NORTHING: 660818.108 EASTING: 1826802.491

RECORD:
 SET PK/WASHER
 ATOP NAIL SPIKE
 BY COUNTY
 11-29-84
 SET PK/WASHER
 8-5-93, RCC
 FD PK/WASHER
 5-31-00, BC
 SET PK/WASHER
 7-26-00, SAH
 FD PK/WASHER
 REFA10
 6-23-15, JFO
 DNF
 3-24-17, DCH
 SET MAG/WASHER
 12-12-18, JLL



O.D.O.T. DISTRICT 2 SURVEY OFFICE

PERSONNEL

REFERENCE NO. 10

SHEET 10 OF 17

NOTES CORDES

H.C. VAN DUSEN

R.C. BROWN

DATE 5/31/00

WEATHER FAIR

TEMP. 80°

ROUTE #53

COUNTY OTTAWA

TOWNSHIP BAY

SECTION 16

T.6 N R.16 E

TYPE MONUMENT P.K.'S/WASHERS

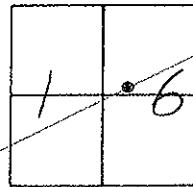
ON SURFACE - ~~BELOW~~ ON SURFACE

LEFT-~~C~~ PAV'T. - RIGHT "A"=0.5', "B"=1'

"A"=12.5'
"B"=13'

JORT. EDGE PAVEMENT

S.L.M. 127+30



RECORD: 11-29-84 "PT. B"

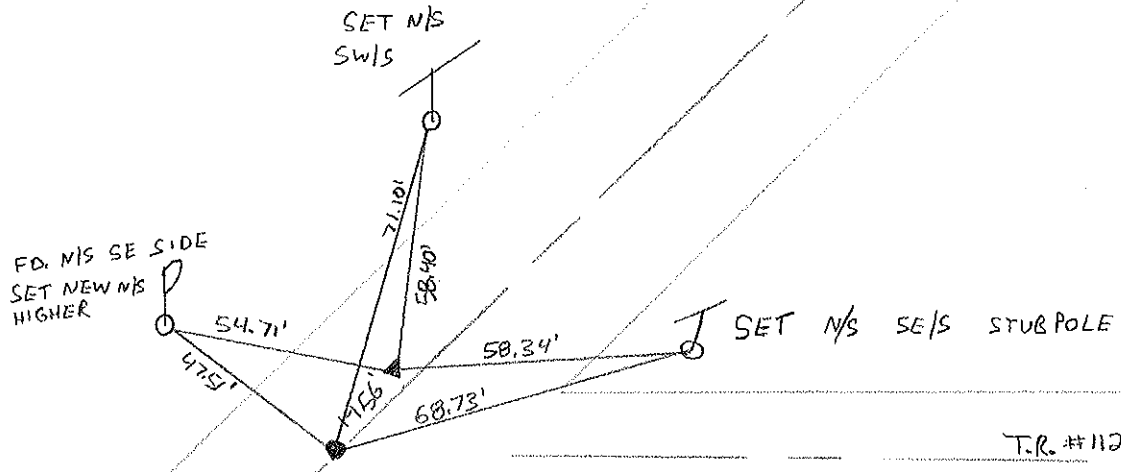
P.I. SURVEY & CONST. STA. 127+06.59

$\Delta = 00^{\circ}06'$ RT.

SET PK/WASHER ATOP PK/WASHER
ATOP R.R. SPIKE.

PT. "A"

SET PK/WASHER ATOP
NAIL SPIKE BY COUNTY



SET PK/WASHER AT BOTH
PTS. 7-26-00 SAH

SET PK'S/WASHERS 8-5-1992 RCC

O.D.O.T. DISTRICT 2 SURVEY OFFICE

PERSONNEL

REFERENCE NO. 10

SHEET 10 OF 17

NOTES CHENEY

H.C. RIPPLE

DATE 6-22-1993

ROUTE #53

R.C. BARBOUR

WEATHER FAIR

COUNTY OTAWA

GEYMAN

TEMP. 80°

TOWNSHIP BAY

SECTION 16

T. 6 N. R. 16 E

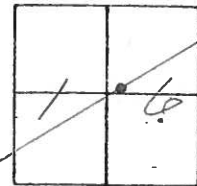
TYPE MONUMENT PK'S/WASHERS

ON SURFACE - ~~BELOW~~ ON

LEFT - C. PAV'T. - RIGHT "A" = 0.5'

"B" = 1.3' TO R.T. EDGE PAVEMENT

S.L.M. 127+30



RECORD: 11-29-1984 "Pt. B"

P.I. SURVEY & CONST. STA. 127+06.59
 $\Delta = 00^{\circ}06'$ RT.

SET PK/WASHER ATOP PK/WASHER
 ATOP R.P. SPIKE

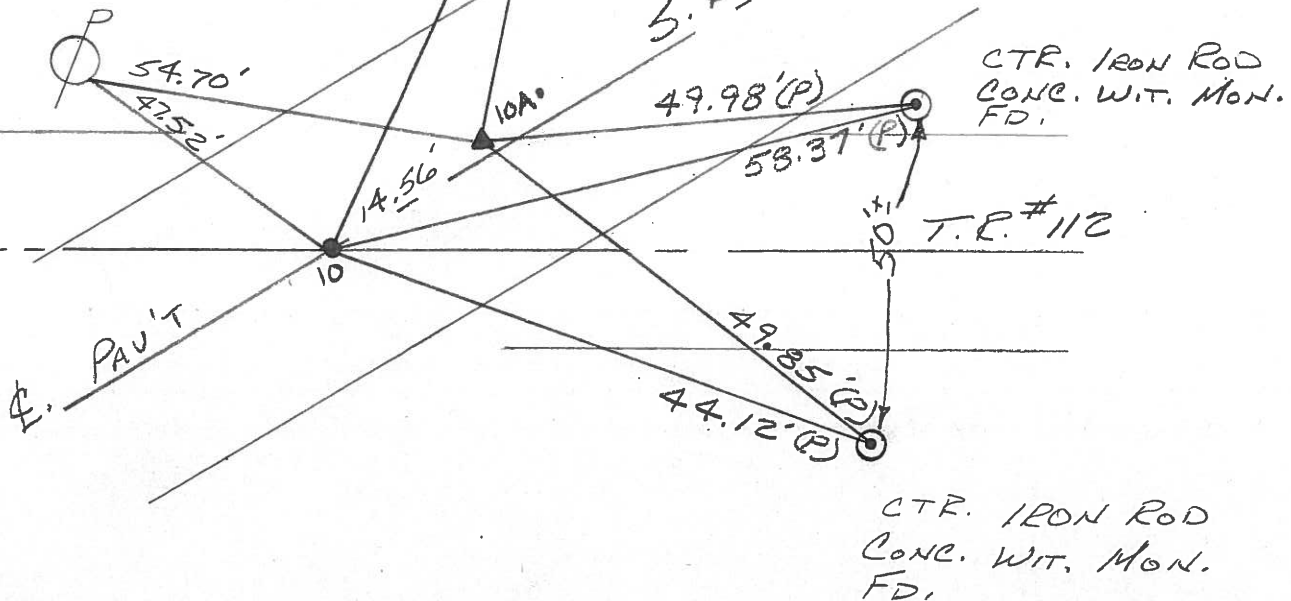
Pt. "A"

SET PK/WASHER ATOP
 NAIL SPIKE BY COUNTY

FD. N/S.
 S.W. SIDE -
 SET NEW N/S.
 HIGHER

FD. N/S. S.E. SIDE
 SET NEW N/S. HIGHER

SET PK'S/WASHERS
 8-5-1993
 RCC



O.D.O.T. DISTRICT 2 SURVEY OFFICE

PERSONNEL

NOTES Cronin

H.C. Ripple

R.C. Geyman

REFERENCE NO. 10

SHEET 10 OF

DATE Drawn 11/29/84

ROUTE #53

WEATHER overcast

COUNTY Ottawa

TEMP. 46°

TOWNSHIP Bay

SECTION 16

T.C. N. R. 16 E

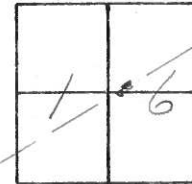
TYPE MONUMENT R.R. spike

ON SURFACE - BELOW below

LEFT - & PAV'T. - RIGHT &

TO EDGE PAVEMENT

S.L.M.



10

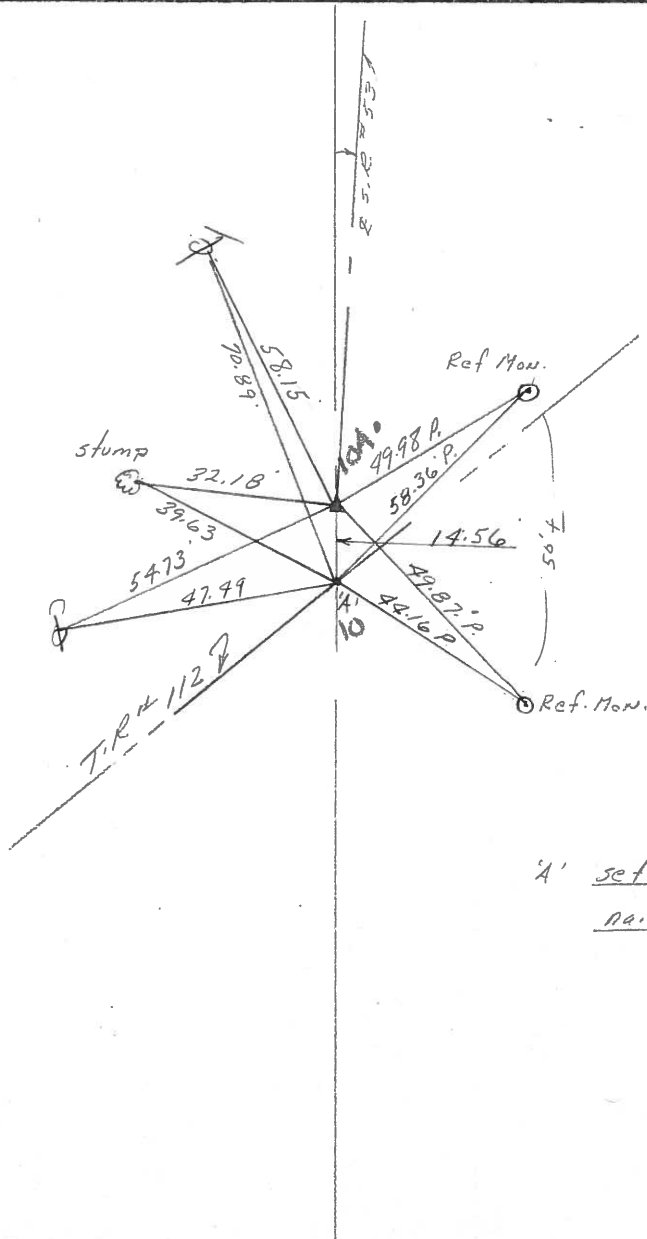
$A = 00^{\circ}06' \text{ Rt.}$

P.E. Survey & Const.

127+06.59

Set P.K. & washer atop

P.K. & washer atop R.R. spike



'A' set P.K. & washer atop
nail/spike by County

| PERSONNEL | TITLE | PERSONNEL | TITLE |
|-----------|-------|-----------|-------|
| | | | |
| | | | |
| | | | |

COUNTY Ottawa DATE 4-18-72

S. R. 53 WEATHER Fair

SEC. 16 TEMP. 50°

DESCRIPTION Bay Twp. LEFT CENTER LINE RIGHT JOB NO. _____

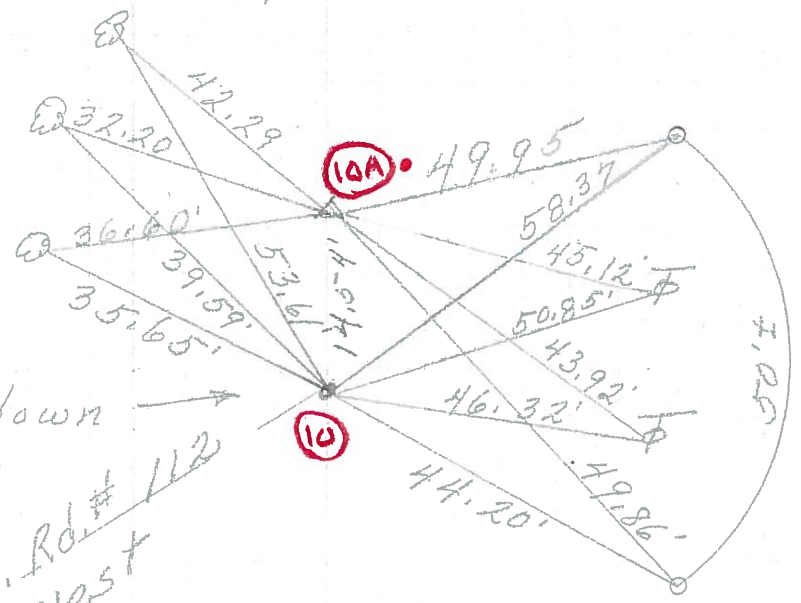
3 - 26" Maples

P.I. & sur. & const
127+06.59
 $\Delta = 0'06"$ Rt.

Roofing Nail 3" down
set by county
survey crew

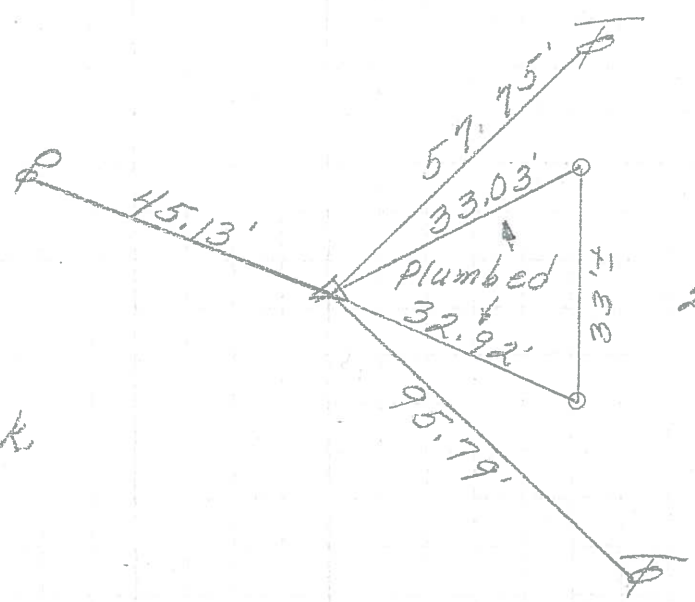
Co. Rd. # 112
west

10



P.I. & survey
& const.
115+17.67
 $\Delta = 0'17"$ Rt.
small R.R. spk.

9



2 - Mon.

| | | | | | | | |
|------------------|-------|-----------|-------|-------------|--------------------------------|---------|----------------|
| PERSONNEL | TITLE | PERSONNEL | TITLE | COUNTY | <u>Ottawa</u> | DATE | <u>7-11-68</u> |
| <u>Schneider</u> | _____ | _____ | _____ | S. R. | <u>53</u> | WEATHER | <u>Fair</u> |
| <u>Mosser</u> | _____ | _____ | _____ | SEC. | <u>San. Co. Line - North</u> | TEMP. | <u>75°</u> |
| <u>B Redding</u> | _____ | _____ | _____ | DESCRIPTION | <u>Ties for Control Points</u> | | JOB NO. |
| <u>Potts</u> | _____ | _____ | _____ | | | | |

