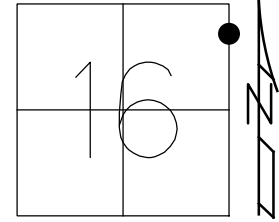


O.D.O.T. DISTRICT 2 SURVEY OFFICE (USE ONLY)

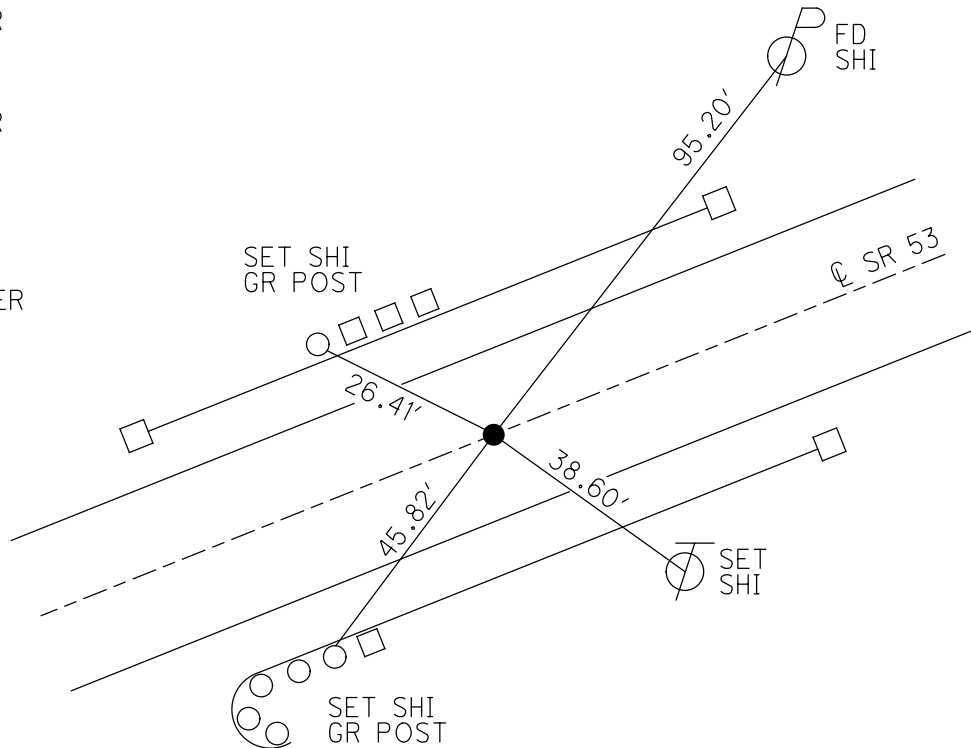
PERSONNEL \_\_\_\_\_ REFERENCE NO. 11 SHEET 13 OF 20  
 NOTES LEU DATE 3/24/17 ROUTE SR 53  
 H.C. HOMAN WEATHER CLOUDY COUNTY OTTAWA  
 R.C. LEU TEMP. 58° TOWNSHIP BAY  
 \_\_\_\_\_ SECTION 16  
 DWG BY MILLER PID 92368 T 6 N R 16 E

TYPE MONUMENT P.K./WASHER  
 ON SURFACE - ~~BELOW~~ ON  
 OFFSET Q PAVEMENT ON LT : RT  
11.5' TO RT EDGE PAVEMENT  
 STATION: 147+88.02



HORZ.DATUM: NAD83 (2011) GEOID: 2012A  
 GRID: NORTHING: 661901.450 EASTING: 1828574.407

RECORD: P.O.T.  
 STA 147+91  
 SET PK/WASHER  
 ATOP R.R. SPIKE  
 SET BY COUNTY  
 12-5-84  
 SET PK/WASHER  
 8-5-93, RCC  
 FD PK/WASHER  
 5-3-00, BC  
 SET PK/WASHER  
 7-27-00, SAH  
 FD PK/WASHER  
 REF11  
 6-23-15, JFO  
 FD PK/WASHER  
 3-23-17, DCH  
 SET MAG/WASHER  
 12-12-18, JLL



# O.D.O.T. DISTRICT 2 SURVEY OFFICE

PERSONNEL

REFERENCE NO. 11

SHEET 11 OF 17

NOTES CORDES

H.C. VAN DUSEN

R.C. BROWN

DATE 5/31/00

WEATHER FAIR

TEMP. 80°

ROUTE #53

COUNTY OTTAWA

TOWNSHIP BAY

SECTION 16

T. 6 N. 16 E.

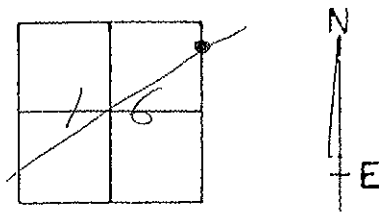
TYPE MONUMENT PK/WASHER

ON SURFACE - BELOW ON

LEFT - ℄ PAV'T. - RIGHT ON

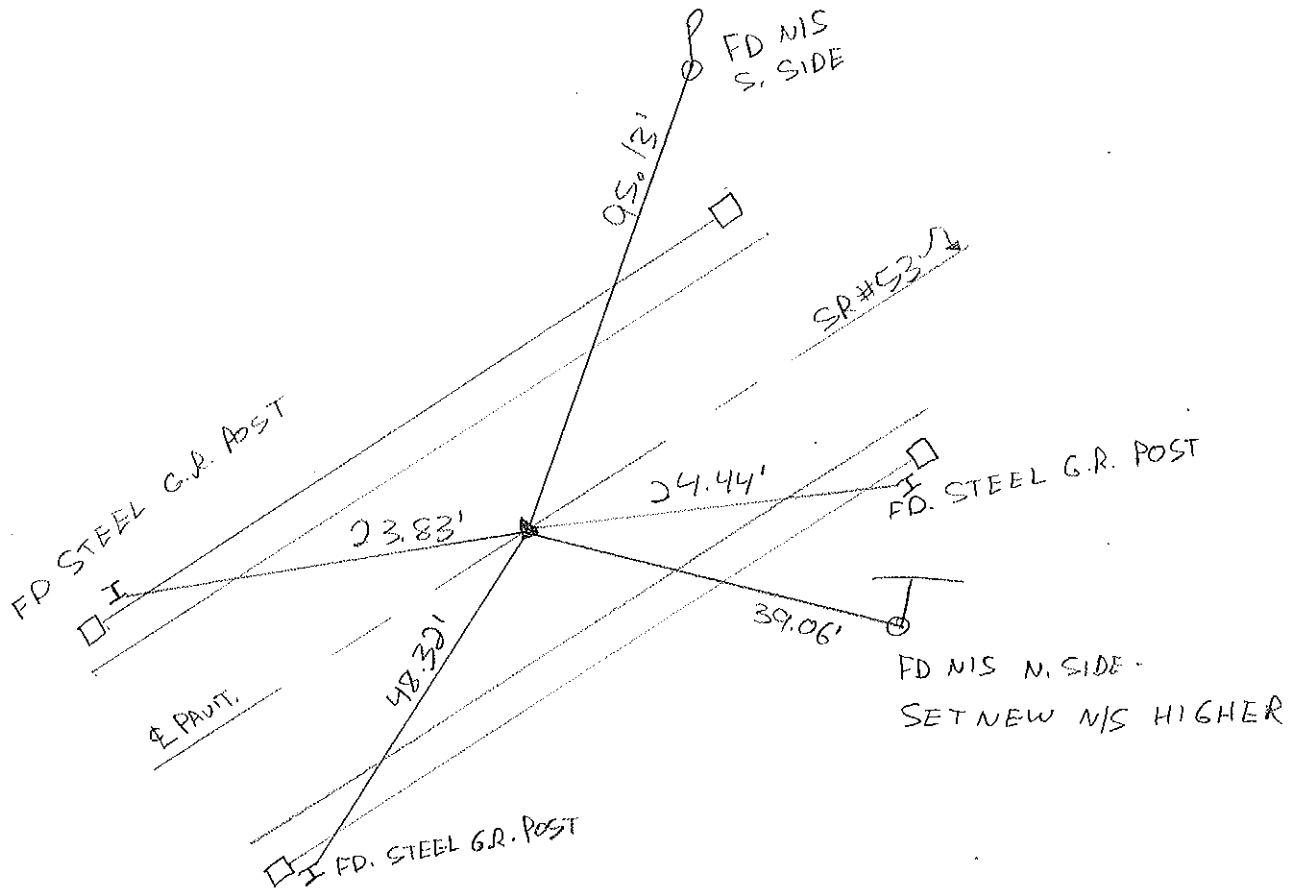
11.5 TO RT. EDGE PAVEMENT

S.L.M. 148+27



RECORDS: 12-5-1984  
 P.O.T. STA. 147+91  
 SET PK/WASHER  
 ATOP R.P. SPIKE  
 SET BY COUNTY

SET PK WASHER 8-5-1993  
 RCC  
 Set PK/W 7-27-00  
 SAM



NOTE: USED TOP OF WEAR CORNER OF STEEL GUARD RAIL POSTS.

O.D.O.T. DISTRICT 2 SURVEY OFFICE

PERSONNEL

REFERENCE NO. 11

SHEET 11 OF 17

NOTES CHENEY

H.C. RIPPLE

DATE 6-22-1993

ROUTE #53

R.C. BARBOUR

WEATHER FAIR

COUNTY OTTAWA

GEYMAN

TEMP. 80°

TOWNSHIP BAY

SECTION 16

T 6 N R 16 E

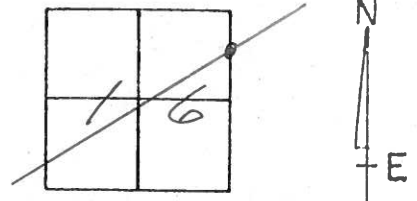
TYPE MONUMENT PK/WASHER

ON SURFACE - ~~BELOW~~ ON

~~SET - C~~ PAV'T. - ~~RIGHT~~ ON

11.5 TO R.T. EDGE PAVEMENT

S.L.M. 148+27



RECORD: 12-5-1984

P.O.T. STA. 147+91

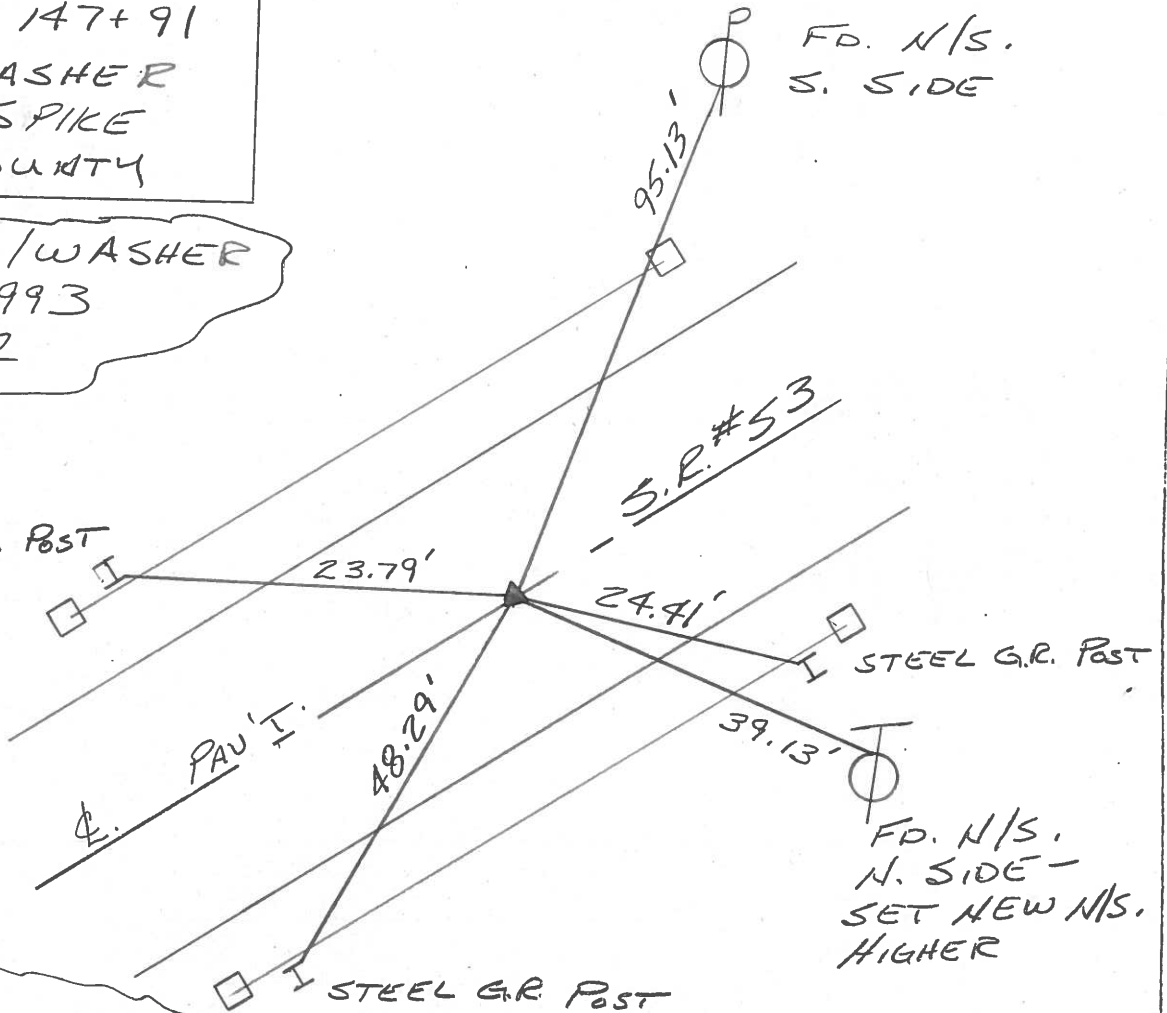
SET PK/WASHER

ATOP R.R. SPIKE

SET BY COUNTY

SET PK/WASHER  
8-5-1993  
RCC

STEEL G.R. Post



FD. N/S.  
S. SIDE

FD. N/S.  
N. SIDE -  
SET NEW N/S.  
HIGHER

\*\*NOTE: USED TOP  
OF NEAR CORNER OF  
STEEL GUARD RAIL  
POSTS.

# O.D.O.T. DISTRICT 2 SURVEY OFFICE

PERSONNEL

REFERENCE NO. 11

SHEET 11 OF     

NOTES Cronin

H.C. Ripple

R.C. Barbour

Geyman

DATE 12/05/84

WEATHER sunny

TEMP. 22°

ROUTE #53

COUNTY Ottawa

TOWNSHIP Bay

SECTION 16

T. 6 N. R. 16 E

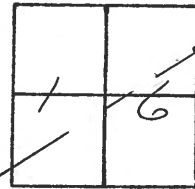
TYPE MONUMENT R.R. spike

ON SURFACE - BELOW below

LEFT- & PAV'T. - RIGHT E

TO:      EDGE PAVEMENT

S.L.M.     



P.O.T.

147+91

Set P.K. & washer atop R.R.

spike set by County

