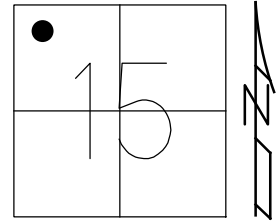


O.D.O.T. DISTRICT 2 SURVEY OFFICE (USE ONLY)

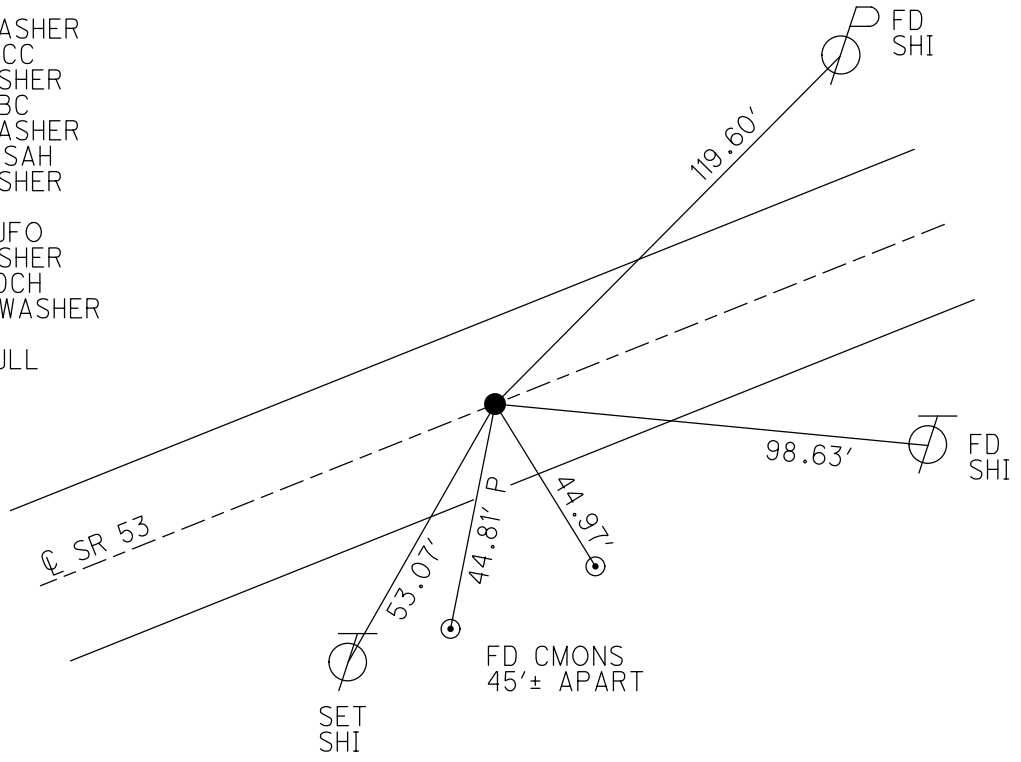
PERSONNEL \_\_\_\_\_ REFERENCE NO. 12 SHEET 14 OF 20  
 NOTES LEU DATE 3/24/17 ROUTE SR 53  
 H.C. HOMAN WEATHER WINDY COUNTY OTTAWA  
 R.C. LEU TEMP. 58° TOWNSHIP BAY  
 SECTION 15  
 DWG BY MILLER PID 92368 T 6 N R 16 E

TYPE MONUMENT P.K./WASHER  
 ON SURFACE - ~~BELOW~~ ON \_\_\_\_\_  
 OFFSET Q PAVEMENT ON \_\_\_\_\_ ~~LT:RT~~  
11.5' TO RT EDGE PAVEMENT  
 STATION: 155+13.11



HORIZ.DATUM: NAD83 (2011) GEOID: 2012A  
 GRID: NORTHING: 662279.645 EASTING: 1829193.047

- RECORD: P.I.
- STA 155+08.56
- $\Delta = 00^\circ 08'$
- SET PK/WASHER
- ATOP PK/WASHER
- ATOP R.R. SPIKE
- 12-5-84
- SET PK/WASHER
- 8-5-93, PCC
- FD PK/WASHER
- 5-31-00, BC
- SET PK/WASHER
- 7-26-00, SAH
- FD PK/WASHER
- REF12
- 6-23-15, JFO
- FD PK/WASHER
- 3-23-17, DCH
- SET MAG/WASHER
- NEWREF12
- 12-12-18, JLL



# O.D.O.T. DISTRICT 2 SURVEY OFFICE

PERSONNEL \_\_\_\_\_

REFERENCE NO. 12

SHEET 12 OF 17

NOTES CORDES

H.C. VAN DUSEN

R.C. BROWN

DATE 5/31/00

WEATHER FAIR

TEMP. 80°

ROUTE #53

COUNTY OTTAWA

TOWNSHIP RAY

SECTION 15

T6 N R 16 E

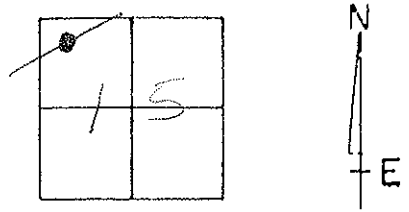
TYPE MONUMENT FD PK/WASHER

ON SURFACE - ~~BELOW~~ ON SURFACE

~~LEFT~~ - E. PAV'T. - ~~RIGHT~~ E. PAV'T.

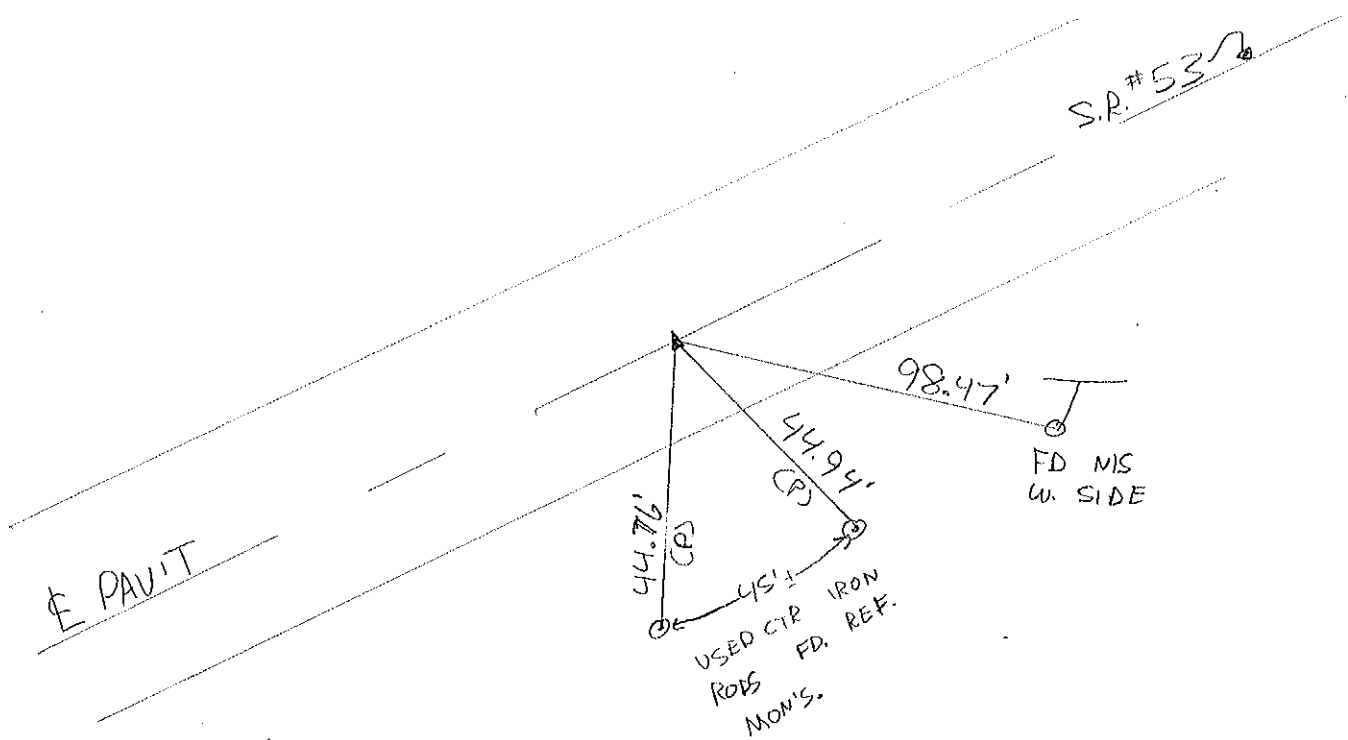
11.5' TO RT. EDGE PAVEMENT

S.L.M. 155+55



RECORD: 12-5-1984  
 P.I. SURVEY & CONST.  
 S.I.A. 155+08.56  
 $\Delta = 60^{\circ} 08' \text{ CT.}$   
 SET PK/WASHER ATOP  
 PK/WASHER ATOP R.R.  
 SPIKE

{ SET PK/WASHER  
 8-5-1993 ACC  
 { Set PK/W 7-26-00  
 SAH



O.D.O.T. DISTRICT 2 SURVEY OFFICE

PERSONNEL

REFERENCE NO. 12

SHEET 12 OF 17

NOTES CHENEY

H.C. RIPPLE

DATE 6-22-1993

ROUTE # 53

R.C. BARBOUR

WEATHER FAIR

COUNTY OTTAWA

GEYMAN

TEMP. 80°

TOWNSHIP BAY

SECTION 15

T6 N R 16 E

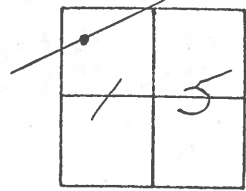
TYPE MONUMENT PK/WASHER

ON SURFACE - ~~BELOW~~ ON

~~LEFT~~ - C. PAV'T. - ~~RIGHT~~ ON

11.5 TO RT. EDGE PAVEMENT

S.L.M. 155+55



RECORD: 12-5-1984

P.I. SURVEY & CONST.

STA. 155+08.56

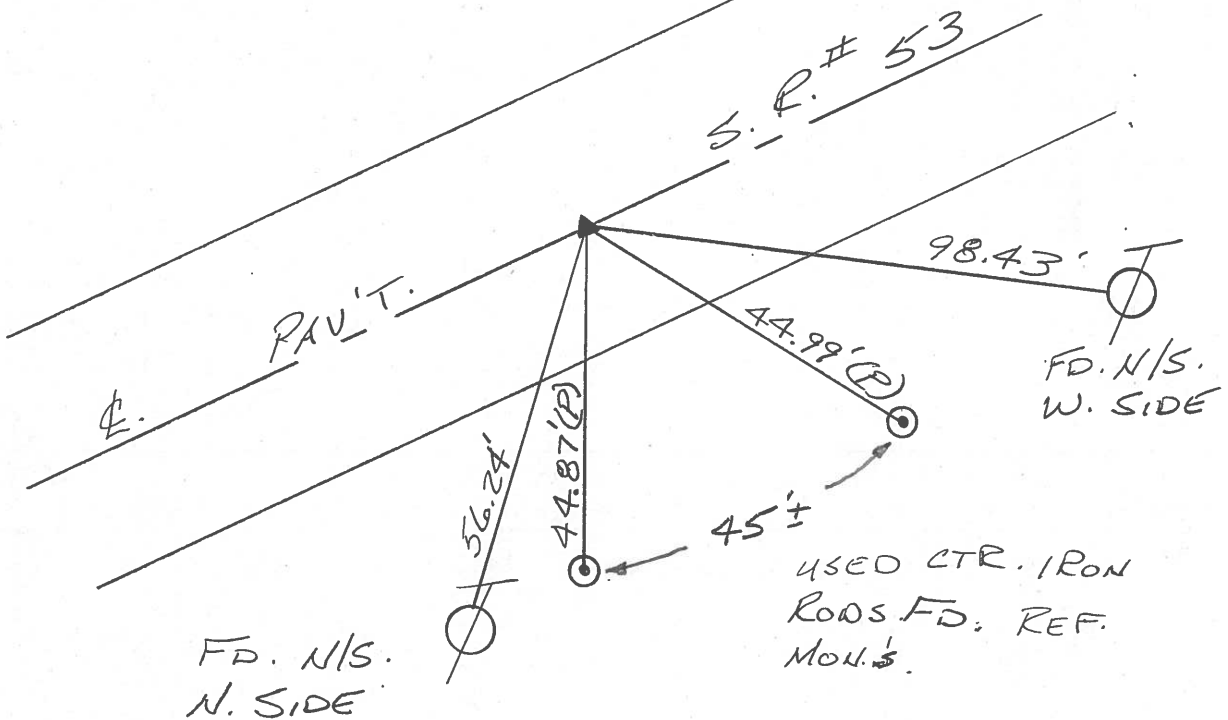
$\Delta = 00^\circ 08' \text{ LT.}$

SET PK/WASHER ATOP

PK/WASHER ATOP R.R.

SPIKE

SET PK/WASHER  
8-5-1993  
RCC



# O.D.O.T. DISTRICT 2 SURVEY OFFICE

PERSONNEL

REFERENCE NO. 12

SHEET 12 OF \_\_\_\_\_

NOTES Cronin

H.C. Ripple

R.C. Barbour

Geyman

DATE 12/05/84

WEATHER sunny

TEMP. 22°

ROUTE # 53

COUNTY Ottawa

TOWNSHIP Bay

SECTION 15

T. 6 N. 16 E

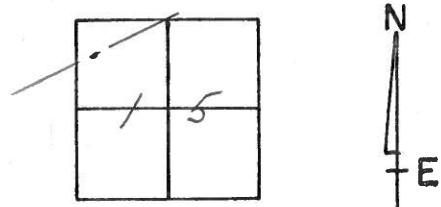
TYPE MONUMENT R.R. spike

ON SURFACE - BELOW below

LEFT - € PAV'T. - RIGHT €

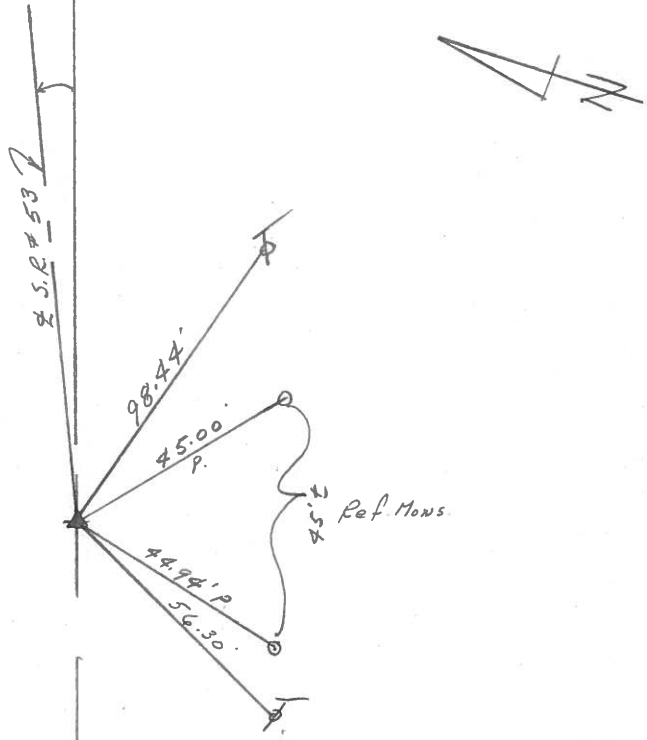
TO \_\_\_\_\_ EDGE PAVEMENT

S.L.M. \_\_\_\_\_



11

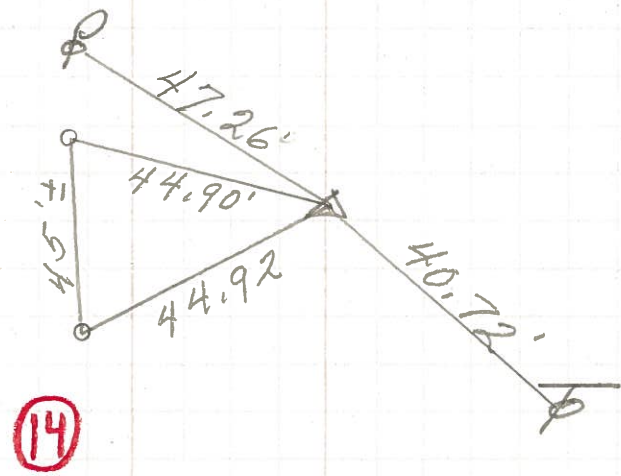
$\Delta = 00^{\circ} 08' \text{ Lt. Rec.}$   
P.I. Survey & Const  
155 + 08.56  
Set P.K. & washer at top P.K.  
& washer at top R.R. spike



PERSONNEL	TITLE	PERSONNEL	TITLE
		COUNTY <u>Ottawa</u>	DATE <u>4-18-72</u>
		S. R. <u>53</u>	WEATHER <u>Fair</u>
		SEC. <u>10 &amp; 15</u>	TEMP. <u>53°</u>
DESCRIPTION <u>Bay Twp.</u>			JOB NO.
	LEFT	CENTER LINE	RIGHT

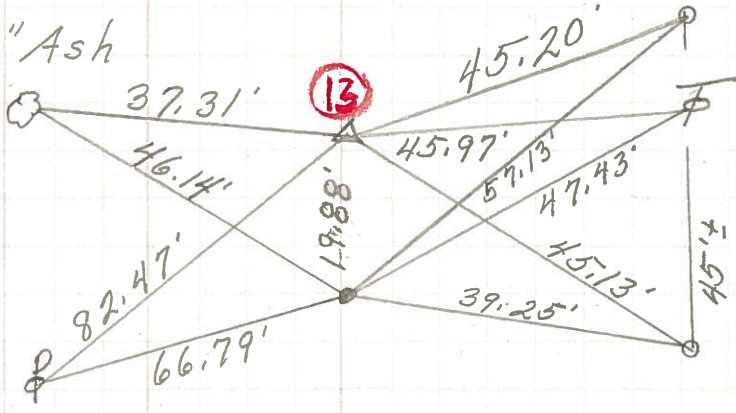
P.I. & survey  
& Const.  
199 + 72.82  
 $\Delta = 0^{\circ} 08' \text{ Rt.}$   
Small R. R. spk.

13



P.I. & Sur & Const. 8" Ash  
178 + 39.24  
 $\Delta = 2^{\circ} 44' \text{ Rt.}$   
Small R. R. spk.

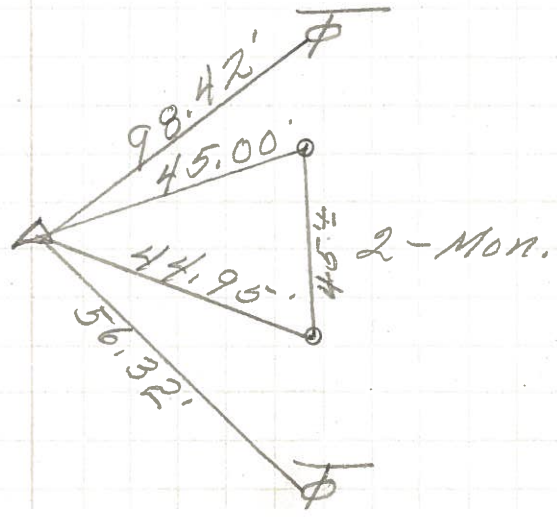
12



P.I. & Survey & Const.  
155 + 08.56  
 $\Delta = 0^{\circ} 08' \text{ Lt.}$   
Small R. R. spk.

11

12.



PERSONNEL	TITLE	PERSONNEL	TITLE	COUNTY	Ottawa	DATE	7-11-68
Schneider				S. R.	53	WEATHER	Fair
Mosser				SEC.	San. G. Line - North	TEMP.	75°
Redding							
Potts							

DESCRIPTION Ties for Control Points JOB NO. \_\_\_\_\_

