

O.D.O.T. DISTRICT 2 SURVEY OFFICE (USE ONLY)

PERSONNEL

REFERENCE NO. 13

SHEET 15 OF 20

NOTES VAN DUSEN

DATE 5/23/00

ROUTE SR 53

H.C. CORDES

WEATHER FAIR

COUNTY OTTAWA

R.C. BROWN

TEMP. 80°

TOWNSHIP BAY

SECTION 10

DWG BY MILLER

PID 92368

T 6 N R 16 E

TYPE MONUMENT P.K./WASHER

ON SURFACE - ~~BELOW~~ ON

OFFSET \odot PAVEMENT 3.5' LT : ~~RT~~

8.5' TO RT EDGE PAVEMENT

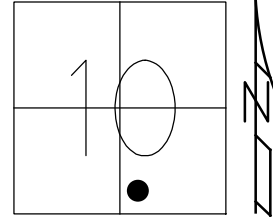
STATION: 178+43.80

HORZ.DATUM: NAD83 (2011)

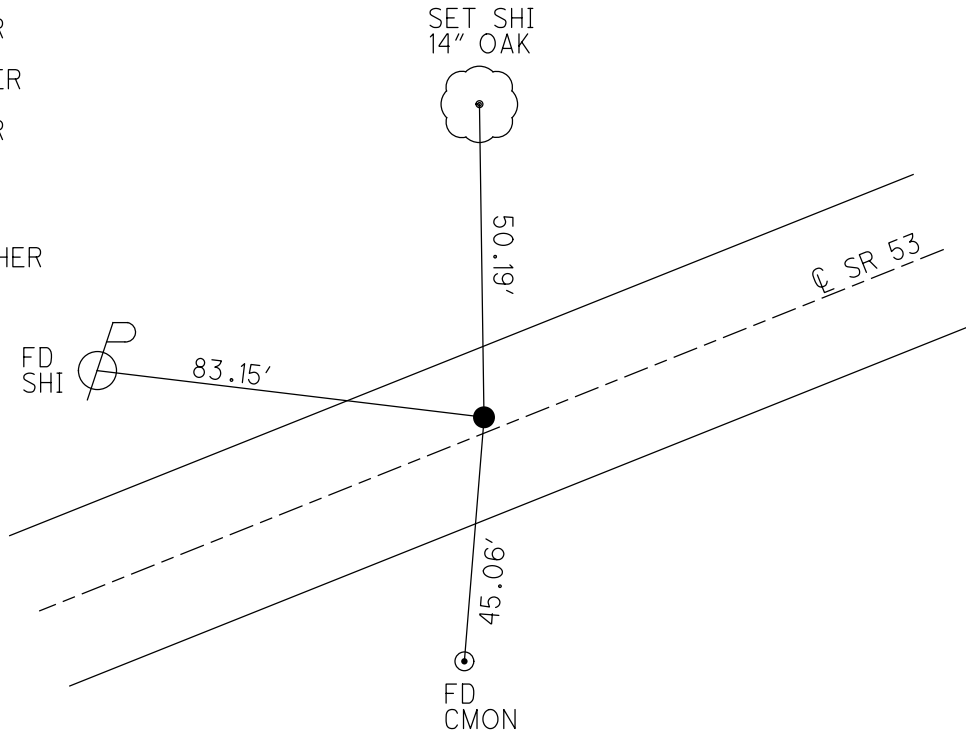
GEOID: 2012A

GRID: NORTHING: 663500.385

EASTING: 1831178.469



RECORD: P.I.
 STA 178+39.24
 $\Delta = 00^\circ 44' RT (REC)$
 SET PK/WASHER
 ATOP PK/WASHER
 ATOP R.R. SPIKE
 12-5-84
 FD PK/WASHER
 5-31-00, BC
 SET PK/WASHER
 7-26-00, SAH
 FD PK/WASHER
 REF13
 6-23-15, JFO
 DNF
 3-24-17, DCH
 SET MAG/WASHER
 12-12-18, JLL



O.D.O.T. DISTRICT 2 SURVEY OFFICE

PERSONNEL

REFERENCE NO. 13

SHEET 13 OF 17

NOTES VAN DUSEN

H.C. CORDES

DATE 5-31-00

ROUTE # 53

R.C. BROWN

WEATHER Fair

COUNTY OTTAWA

TEMP. 80°F

TOWNSHIP BAY

SECTION 10

T.C.N.R. 16 E

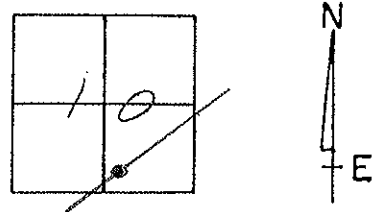
TYPE MONUMENT PK / WASHER

ON SURFACE - BELOW SURFACE

LEFT - 0 PAV'T. - RIGHT 3.5'

8.5' TO RT EDGE PAVEMENT

S.L.M. 178+93



RECORDS 12-5-1984

P.I. SURVEY & CONST.

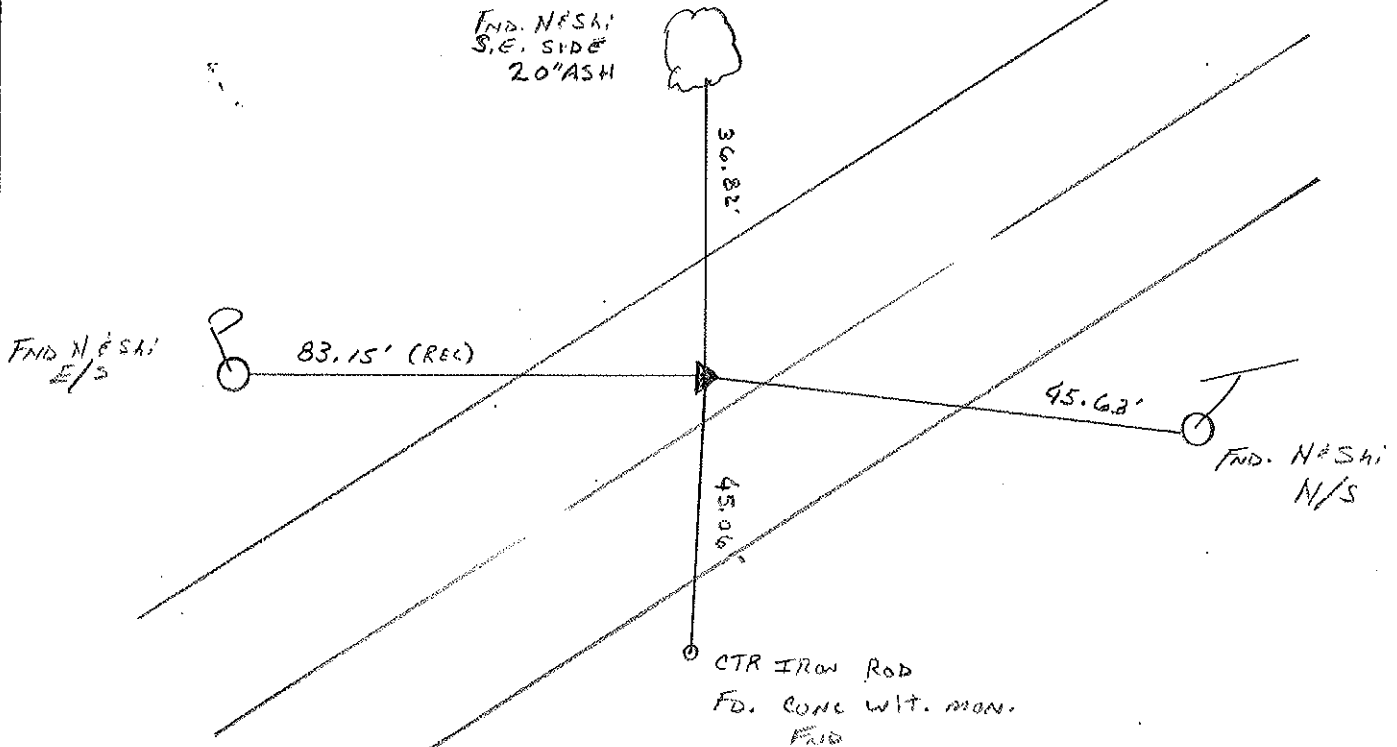
Sta. 178+39.24

$\Delta = 02^\circ 44' RT (REC)$

Set PK & WASHER AT OP PK &

WASHER AT OP RR SPK

(Set PK/W 7-26-00
SAH)



O.D.O.T. DISTRICT 2 SURVEY OFFICE

PERSONNEL

REFERENCE NO. 13

SHEET 13 OF 17

NOTES CHENEY

H.C. RIPPLE

DATE 6-22-1993

ROUTE #53

R.C. BARBOUR

WEATHER FAIR

COUNTY OTTAWA

GEYMAN

TEMP. 80°

TOWNSHIP BAY

SECTION 10

T6 N R 16 E

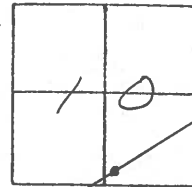
TYPE MONUMENT PK/WASHER

ON SURFACE - ~~BELOW~~ ON

LEFT - C PAV'T. - ~~RIGHT~~ 3.5'

8.5 TO RT. EDGE PAVEMENT

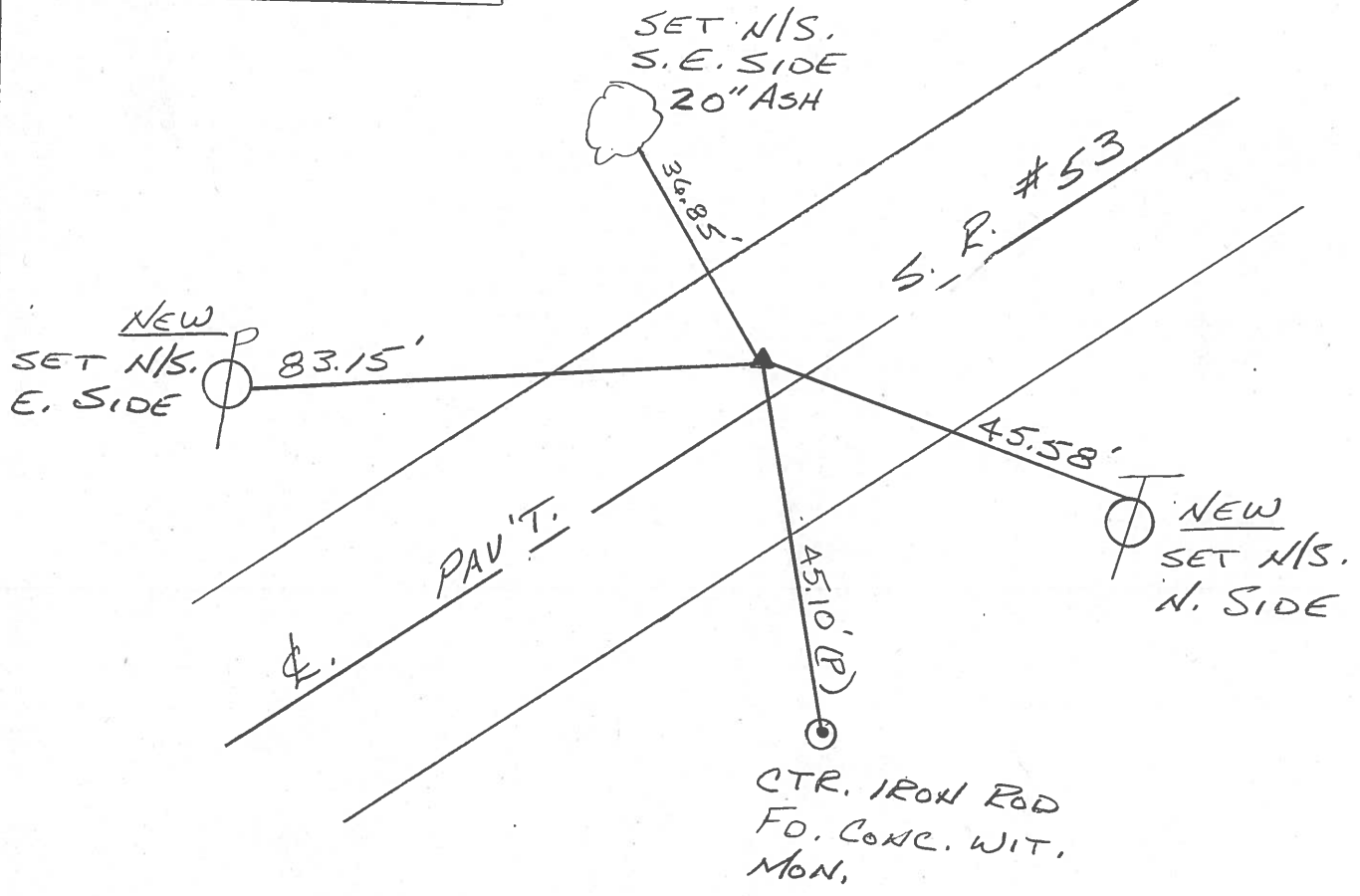
S.L.M. 178+93



RECORD: 12-5-1984

P.I. SURVEY & CONST.
 STA. 178+39.24
 $\Delta = 02^{\circ} 44' \text{ Rt. (REC.)}$
 SET PK/WASHER ATOP
 PK/WASHER ATOP
 RR. SPIKE

SET PK/WASHER
 8-5-1993
 RCC



O.D.O.T. DISTRICT 2 SURVEY OFFICE

PERSONNEL

REFERENCE NO. 13

SHEET 13 OF

NOTES Cronin

H.C. Ripple

R.C. Barbour

Ceymen

DATE 12/05/84

WEATHER sunny

TEMP. 22°

ROUTE #53

COUNTY Ottawa

TOWNSHIP Bay

SECTION 10

T6 N R 16 E

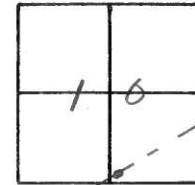
TYPE MONUMENT R.R. spike

ON SURFACE - BELOW below

LEFT- & PAV'T. - RIGHT 3' Lt. of &

 TO EDGE PAVEMENT

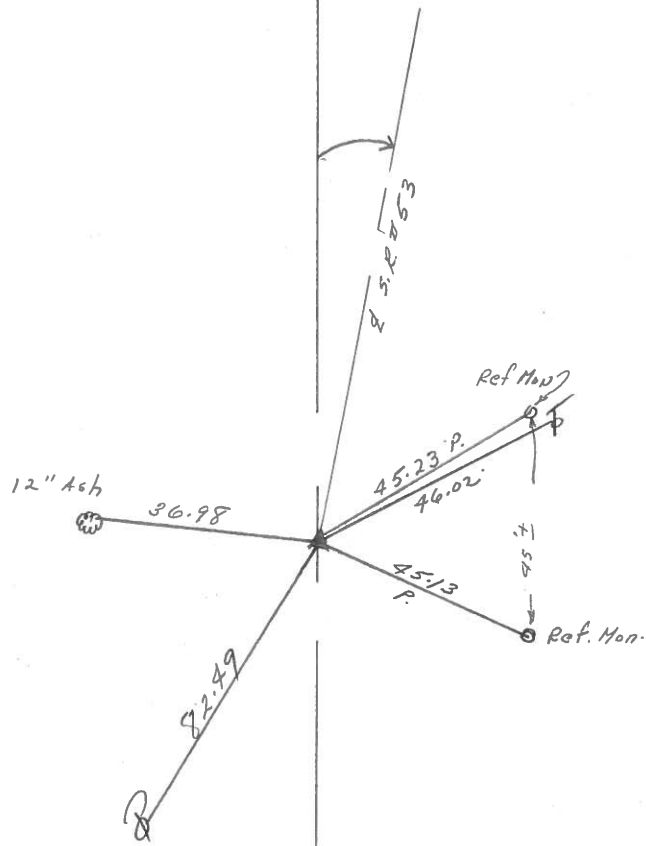
S.L.M.



12



$\Delta = 02^{\circ}49' \text{ Rt. Rec.}$
P.I Survey & Const
178 + 39.24
Set P.K. & washer atop P.K.
& washer atop R.R. spike



PERSONNEL TITLE PERSONNEL TITLE

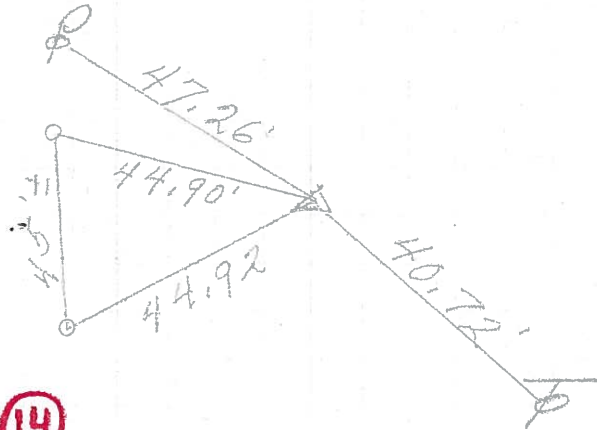
COUNTY Ottawa DATE 4-18-72

S. R. 53 WEATHER Fair

SEC. 10 & 15 TEMP. 53°

DESCRIPTION Bay Twp. LEFT CENTER LINE RIGHT JOB NO.

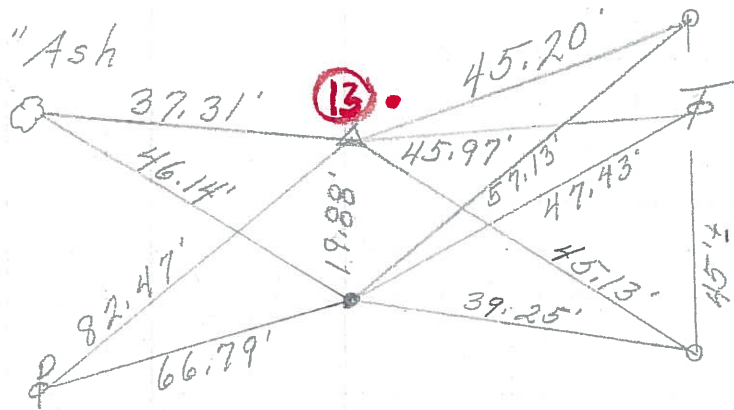
P.I. & survey
& Const.
199+72.82
 $\Delta = 0^{\circ} 08' \text{ Rt.}$
Small R. R. spk.



13

14

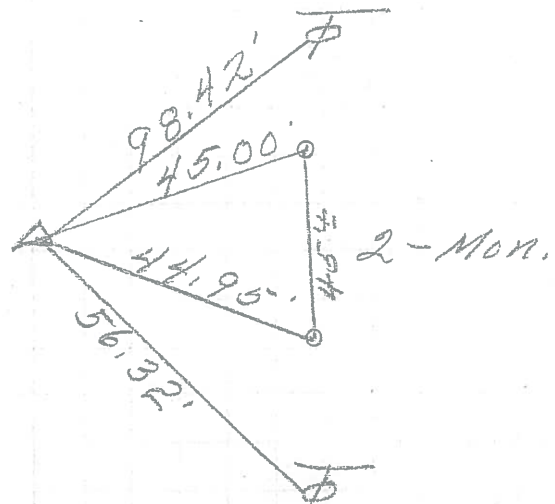
P.I. & sur & const. 8" Ash
178+39.24
 $\Delta = 2^{\circ} 44' \text{ Rt.}$
Small R. R. spk.



12

13

P.I. & survey & Const.
155+08.56
 $\Delta = 0^{\circ} 08' \text{ Lt.}$
Small R. R. spk.



11

12

PERSONNEL	TITLE	PERSONNEL	TITLE	COUNTY	Ottawa	DATE	7-11-68
Schneider				S. R.	53	WEATHER	Fair
Mosser				SEC.	San. Co. Line - North	TEMP.	75°
Redding							
Potts							

DESCRIPTION Ties for Control Points JOB NO. _____

	LEFT	CENTER LINE	RIGHT
P.I. & Sur. & Const. 199+72.82 $\Delta = 0^{\circ}08' RT.$ Small R.R. s.p.k. 6193			
P.I. Sur. & Const. 178+39.24 $\Delta = 2^{\circ}41' RT.$ Small R.R. s.p.k. 6192			2-Mon.
P.I. Sur. & Const. 155+08.56 $\Delta = 0^{\circ}08' LT.$ Small R.R. s.p.k. 6191			2-Mon.