

O.D.O.T. DISTRICT 2 SURVEY OFFICE (USE ONLY)

PERSONNEL _____ REFERENCE NO. 15 SHEET 17 OF 20
 NOTES LEU DATE 3/26/17 ROUTE SR 53
 H.C. HOMAN WEATHER OVERCAST COUNTY OTTAWA
 R.C. LEU TEMP. 53° TOWNSHIP BAY
 SECTION 10
 DWG BY MILLER PID 92368 T 6 N R 16 E

TYPE MONUMENT P.K./WASHER

~~ON SURFACE~~ - BELOW 2"

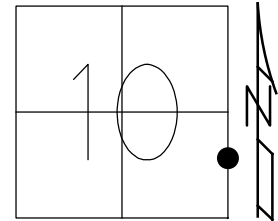
OFFSET C PAVEMENT ON LT : RT

12.5' TO RT EDGE PAVEMENT

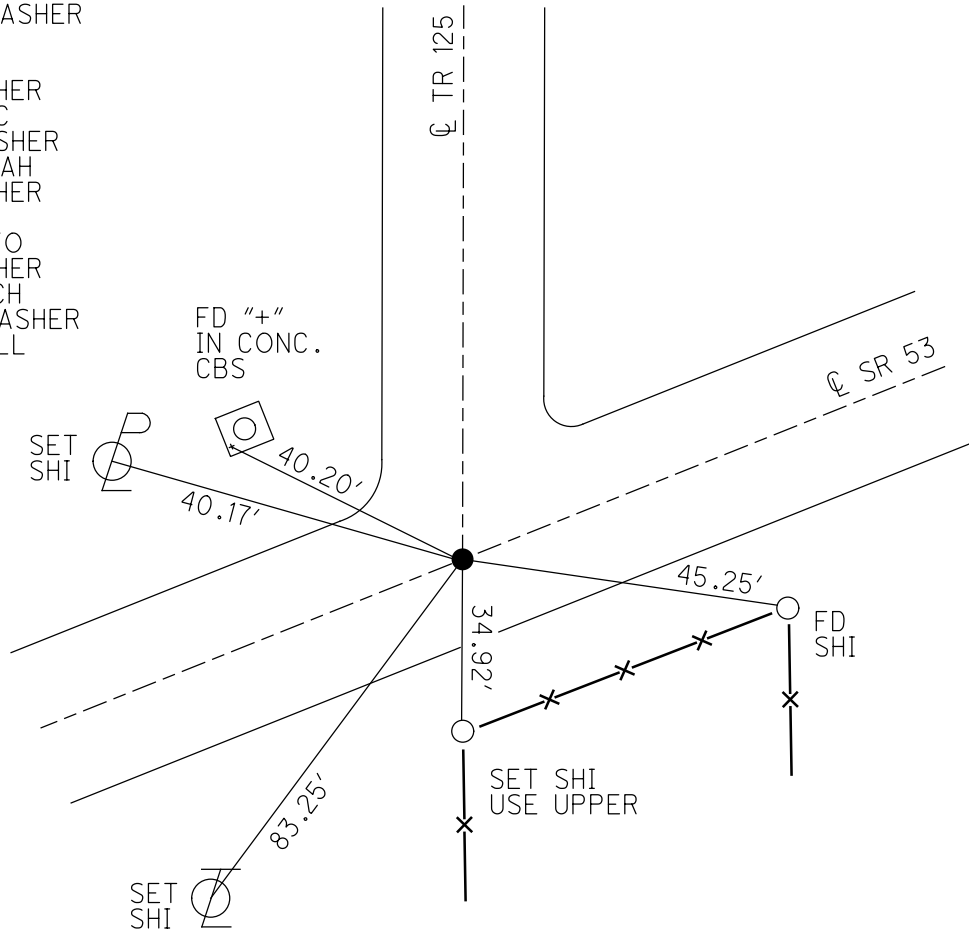
STATION: 209+51.77

HORIZ.DATUM: NAD83 (2011) GEOID: 2012A

GRID: NORTHING: 664998.423 EASTING: 1833901.581



RECORD: P.O.T.
 STA. 209+50.65
 SET PK/WASHER
 ATOP PK/WASHER
 ATOP PK
 12-5-84
 FD PK/WASHER
 5-31-00, BC
 SET PK/WASHER
 7-26-00, SAH
 FD PK/WASHER
 REF15
 6-23-15, JFO
 FD PK/WASHER
 3-26-17, DCH
 SET MAG/WASHER
 12-27-18, JLL



O.D.O.T. DISTRICT 2 SURVEY OFFICE

PERSONNEL

REFERENCE NO. 15

SHEET 15 OF 17

NOTES VAN DUSEN

H.C. CORDES

R.C. BROWN

DATE 5-31-00

WEATHER FAIR

TEMP. 80°F

ROUTE SR #53

COUNTY OTTAWA

TOWNSHIP BAR

SECTION 10

TQ N 10 E

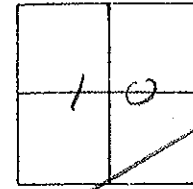
TYPE MONUMENT P.K. / WASHER

ON SURFACE - ~~BELOW~~ ON SURFACE

LEFT - ☉ PAV'T. - RIGHT ☉ PAVMT

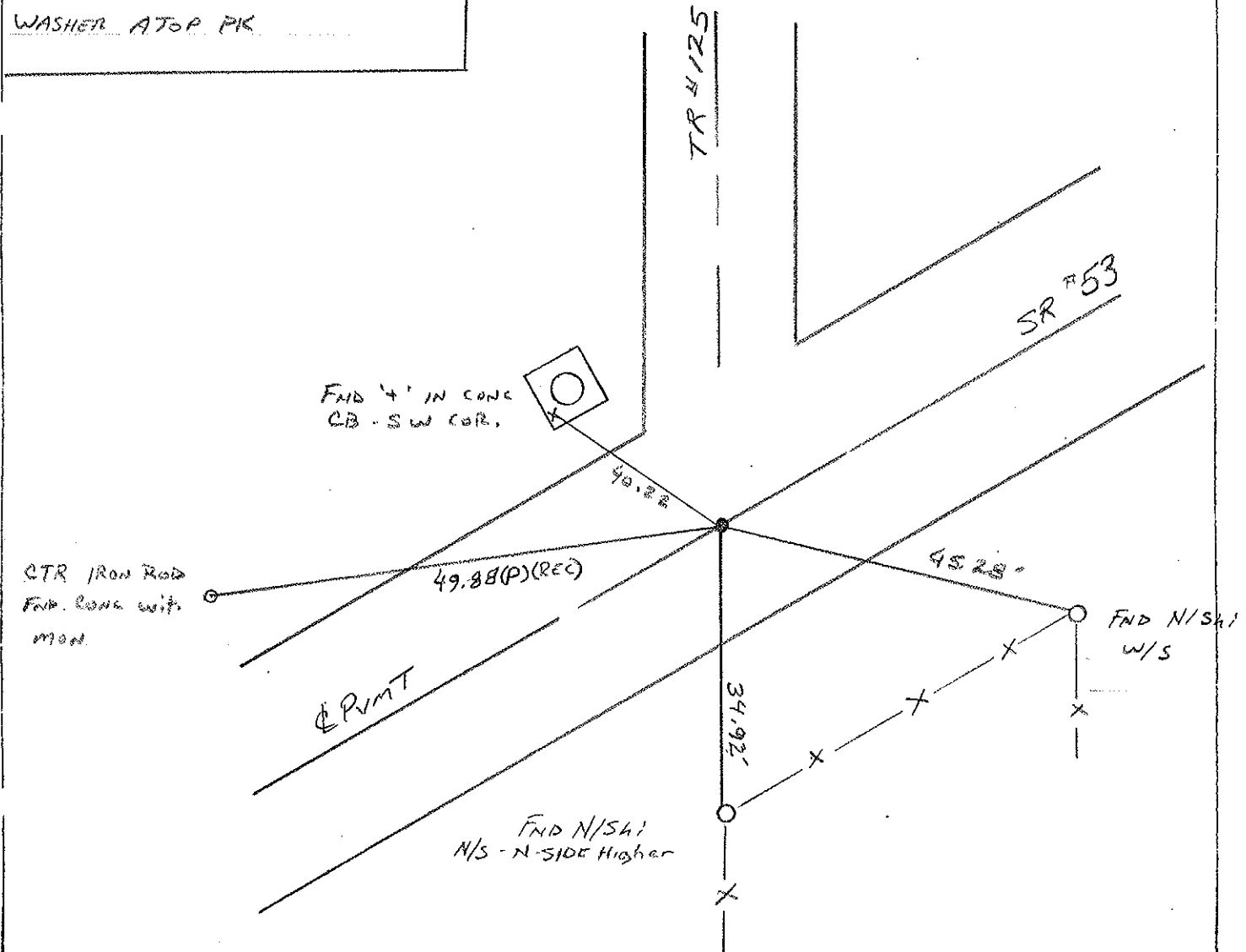
12.5' TO RT EDGE PAVEMENT

S.L.M. 210 +13



RECORD: 12-5-1989
 P.O.T. STA 209 +50.65
 SET PK/WASHER ATOP PK
 WASHER ATOP PK

Set PK/W 7-26-00
 SAN



O.D.O.T. DISTRICT 2 SURVEY OFFICE

PERSONNEL

REFERENCE NO. 15

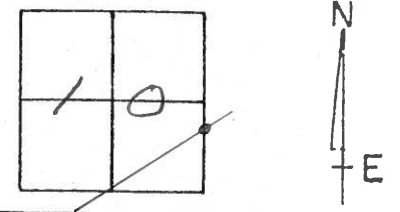
SHEET 15 OF 17

NOTES CHENEY
 H.C. RIPPLE
 R.C. BARBOUR
GEYMAN

DATE 6-22-1993
 WEATHER FAIR
 TEMP. 80°

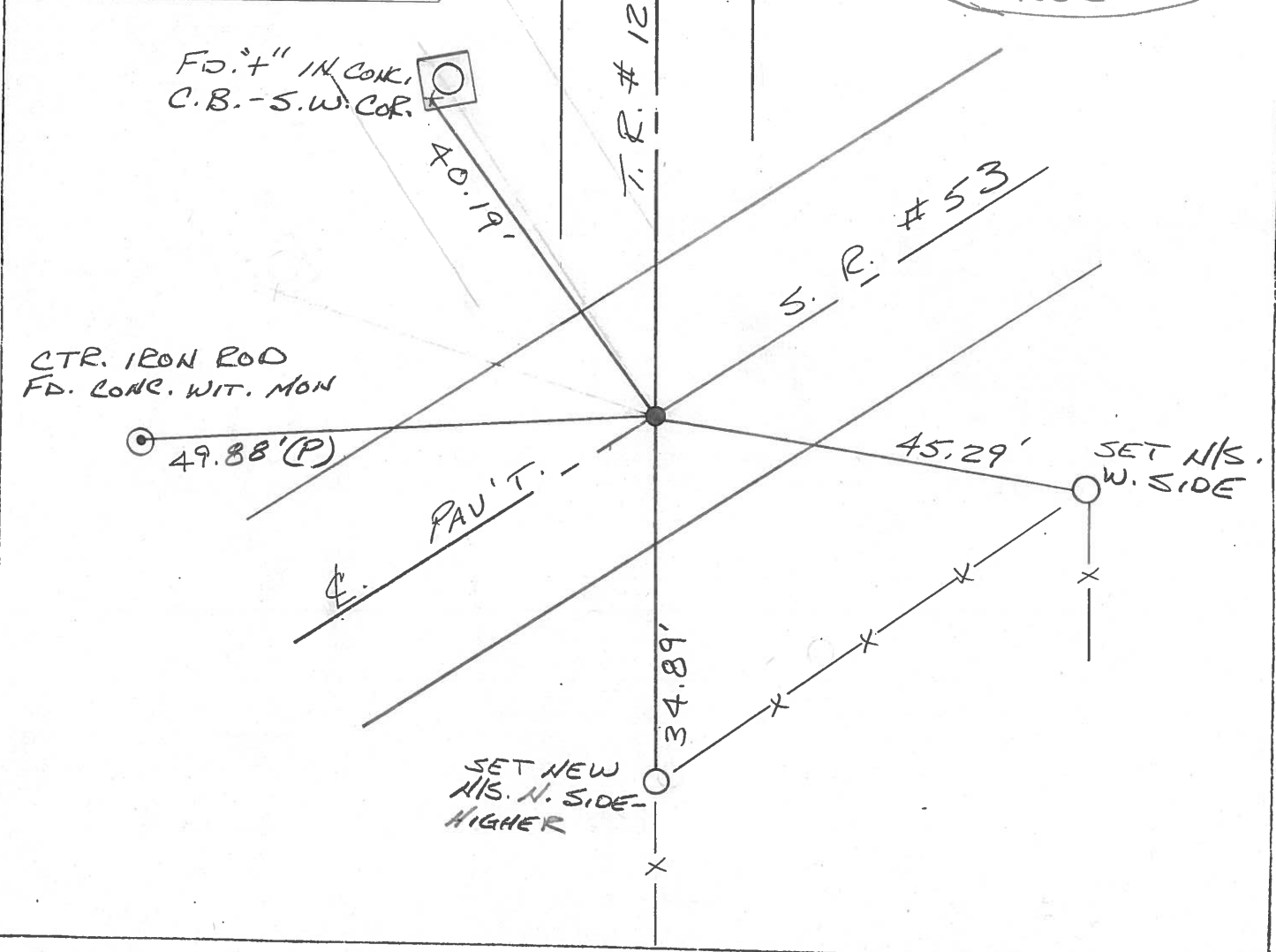
ROUTE # 53
 COUNTY OTTAWA
 TOWNSHIP BAY
 SECTION 10
T&N R 16 E

TYPE MONUMENT PK/WASHER
 ON SURFACE - ~~BELOW~~ ON
~~LEFT - C~~ PAV'T. - RIGHT ON
12.5' TO RT. EDGE PAVEMENT
 S.L.M. Z10+13



RECORD: 12-5-1984
 P.O.T. STA. 209+50.65
 SET PK/WASHER ATOP
 PK/WASHER ATOP P.K.

SET PK/WASHER
 8-5-1993
 RCC



O.D.O.T. DISTRICT 2 SURVEY OFFICE

PERSONNEL

REFERENCE NO. 15

SHEET 15 OF

NOTES Cronin

H.C. Ripple

R.C. Barbour

Geyman

DATE 12/05/84

WEATHER overcast

TEMP. 25°

ROUTE #53

COUNTY Ottawa

TOWNSHIP Bay

SECTION 10

T 6 N R 16 E

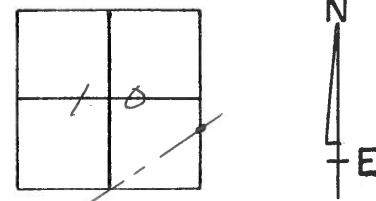
TYPE MONUMENT P.K.

ON SURFACE - BELOW below

LEFT - £ PAV'T. - RIGHT £

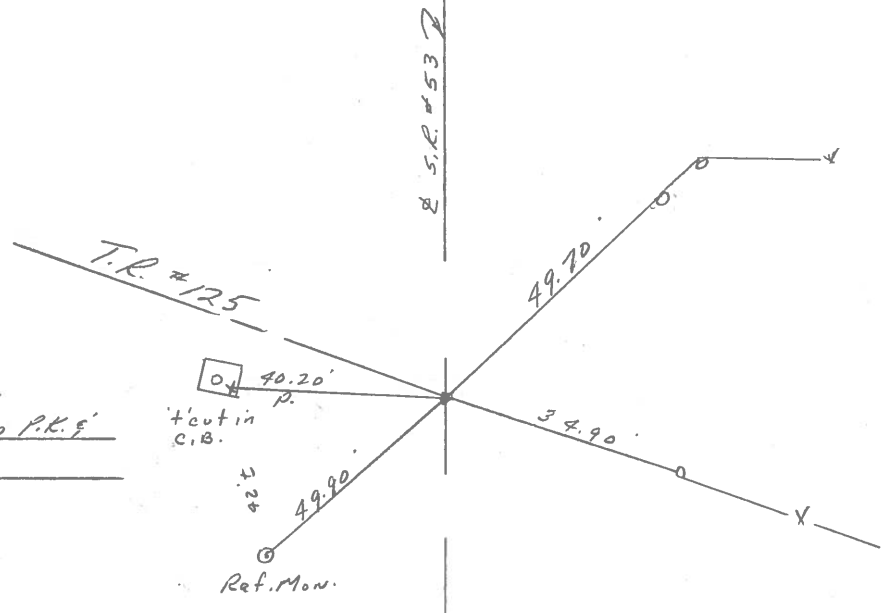
 TO EDGE PAVEMENT

S.L.M.



14

P.O.T.
209+50.65
set P.K.'s washer atop P.K.'s
washer atop P.K.



PERSONNEL	TITLE	PERSONNEL	TITLE	COUNTY	DATE	S. R.	WEATHER	TEMP.
				Ottawa	3-15-76 4-19-77	53	Fair	55° 30
						10 E 11		

DESCRIPTION Bay Twp. LEFT CENTER LINE RIGHT JOB NO.

Reset P.K. Nails & washers
6-16-76

239+75.80
P.K. Nail

(17) 16 ORN Light Pole
1' up

3/14/84
sunny
42°
X

P.I. & survey
& const.
230+50.55
Δ = 0° 23' Lt.
small R. R. spk.

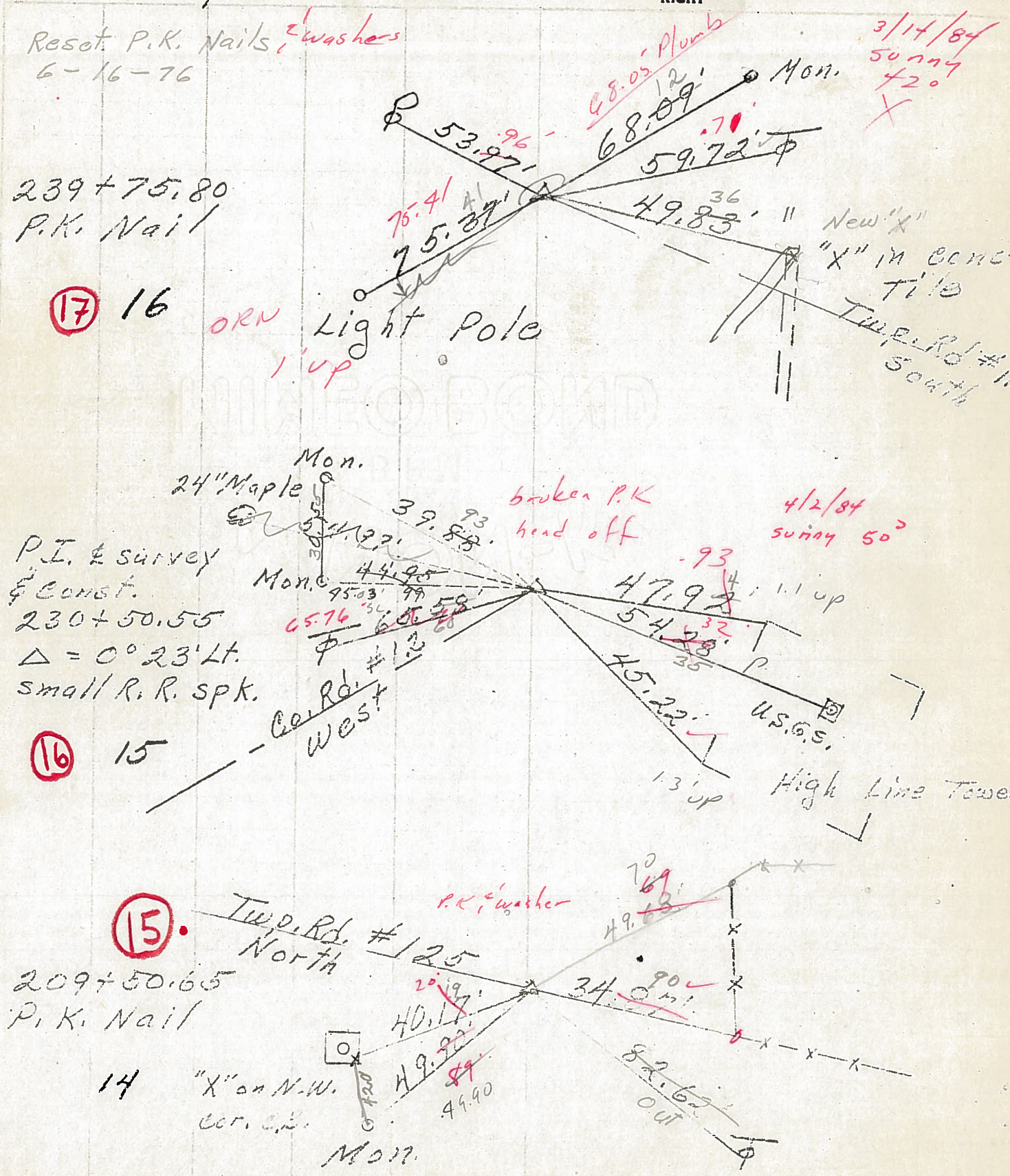
(16) 15
Co. Rd. #125
West

broken P.K.
head off
4/2/84
sunny 50°

U.S.G.S.
High Line Tower
1.3' up

(15)
209+50.65
P.K. Nail

14 "X" on N.W.
Cor. C.P.
Mon.



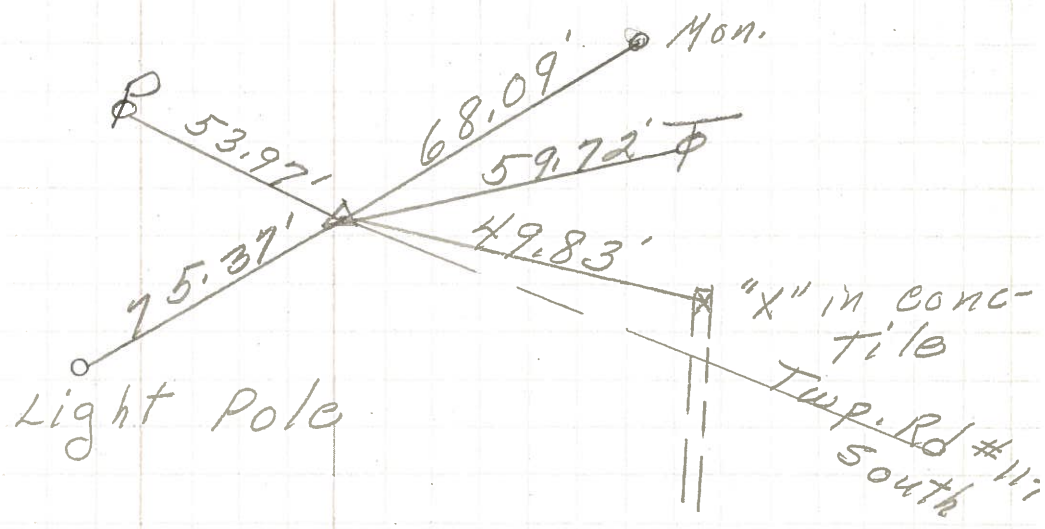
PERSONNEL	TITLE	PERSONNEL	TITLE

COUNTY Ottawa DATE 4-19-72
 S. R. 53 WEATHER Fair
 SEC. 10 E 11 TEMP. 55°

DESCRIPTION Bay Twp. LEFT CENTER LINE RIGHT JOB NO. _____

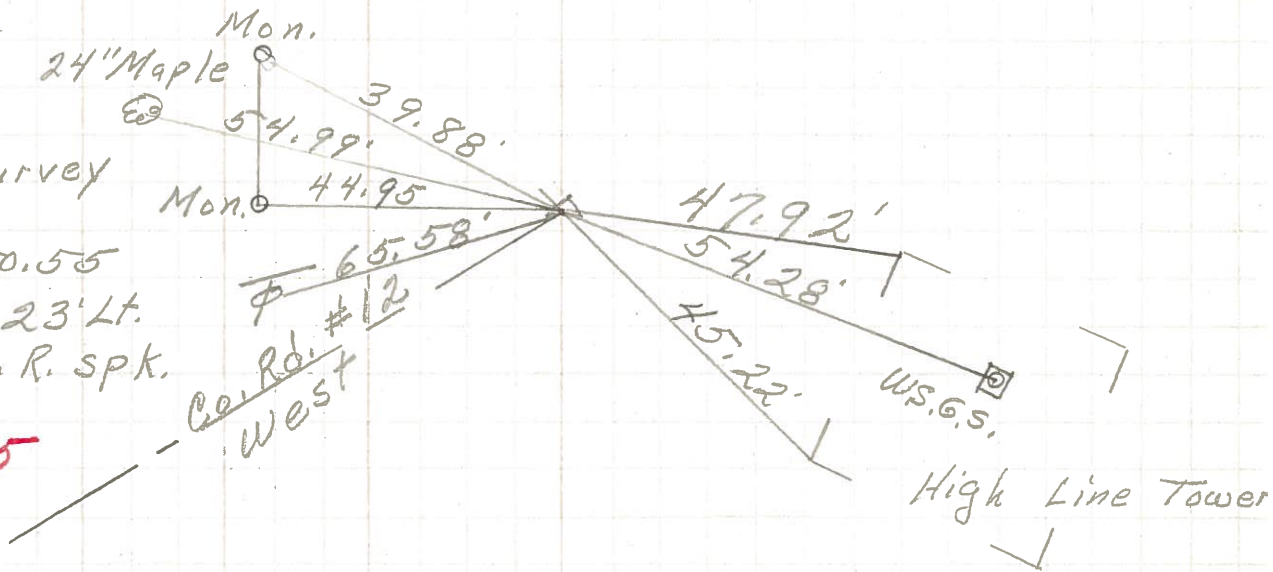
239+75.80
P.K. Nail

17 16



P.I. & survey
& const.
230+50.55
 $\Delta = 0^\circ 23' Lt.$
small R. R. spk.

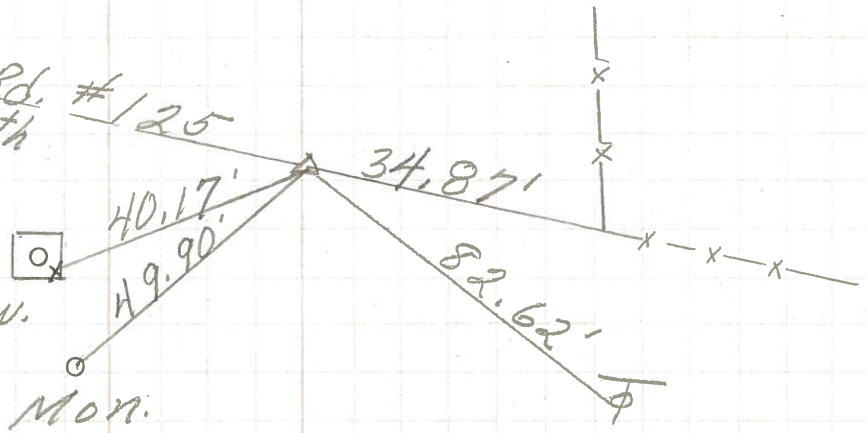
16 15



209+50.65
P. K. Nail

15

14 "X" on N.W.
cor. C.B.
Mon.



PERSONNEL TITLE PERSONNEL TITLE

Schneider

COUNTY Ottawa

DATE 7-12-68

Mosser

S. R. 53

WEATHER Fair

Redding

SEC. San. Co. Line - North

TEMP. 80°

Potts

DESCRIPTION Ties for Control Points

JOB NO.

