

O.D.O.T. DISTRICT 2 SURVEY OFFICE (USE ONLY)

PERSONNEL

REFERENCE NO. 16

SHEET 18 OF 20

NOTES LEU

DATE 3/26/17

ROUTE SR 53

H.C. HOMAN

WEATHER OVERCAST

COUNTY OTTAWA

R.C. LEU

TEMP. 53°

TOWNSHIP BAY

DWG BY MILLER PID 92368

SECTION 11

T 6 N R 16 E

TYPE MONUMENT R.R. SPIKE W/DIMPLE

~~ON SURFACE~~ - BELOW 4"

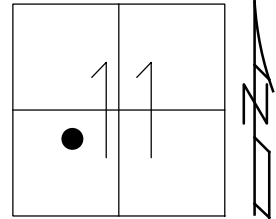
OFFSET  $\varnothing$  PAVEMENT ON LT : RT

11.5' TO RT EDGE PAVEMENT

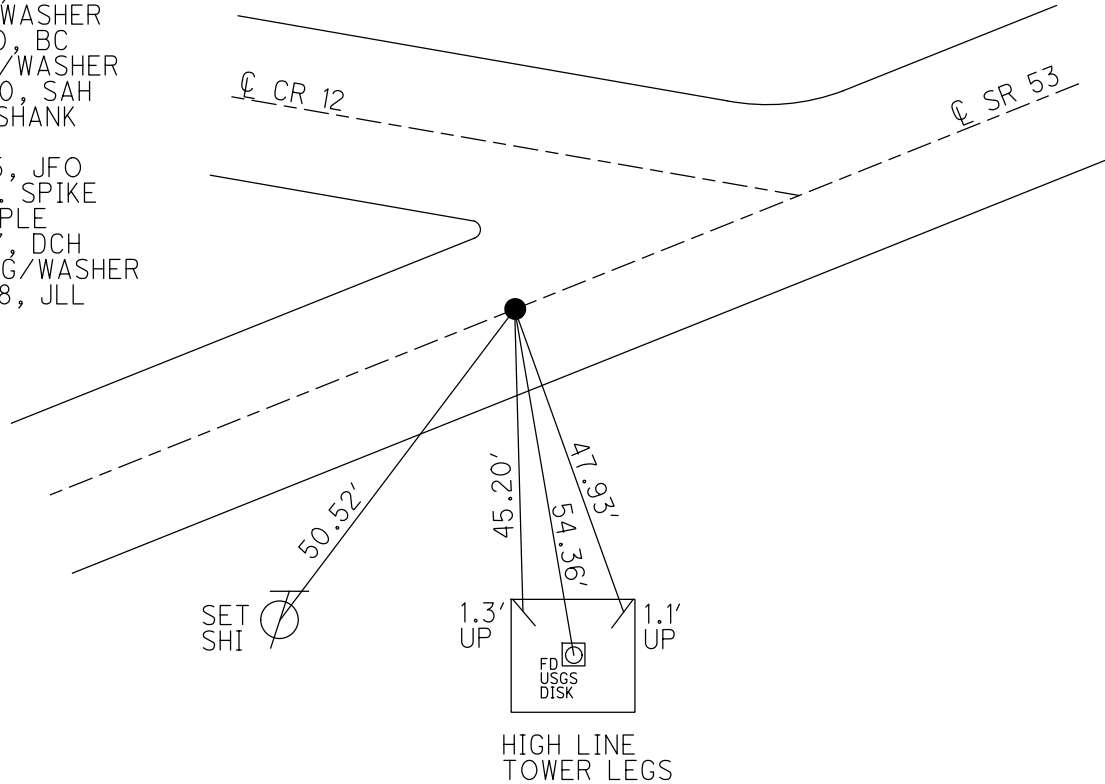
STATION: 230+55.11

HORIZ. DATUM: NAD83 (2011) GEOID: 2012A

GRID: NORTHING: 660099.315 EASTING: 1835746.078



RECORD: P.I.  
 STA 230+50.55  
 $\Delta = 00^\circ 23' LT$   
 SET PK/WASHER  
 ATOP PK/WASHER  
 ATOP R.R. SPIKE  
 12-5-84  
 SET PK/WASHER  
 8-5-93, JLR  
 FD PK/WASHER  
 5-31-00, BC  
 SET PK/WASHER  
 7-26-00, SAH  
 FD PK SHANK  
 REF16  
 6-23-15, JFO  
 FD R.R. SPIKE  
 W/ DIMPLE  
 3-26-17, DCH  
 SET MAG/WASHER  
 12-27-18, JLL



# O.D.O.T. DISTRICT 2 SURVEY OFFICE

PERSONNEL

REFERENCE NO. 16

SHEET 16 OF 17

NOTES CORDES

H.C. VAN DUSEP

R.C. BROWN

DATE 5-31-00

WEATHER SUNNY

TEMP. 80°F

ROUTE SR 453

COUNTY OTTAWA

TOWNSHIP BOY

SECTION 11

T16 N R16 E

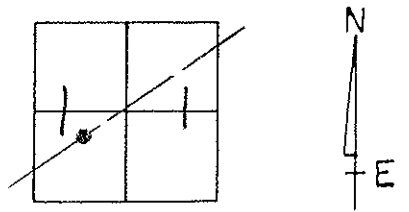
TYPE MONUMENT PK & WASHER

ON SURFACE - ~~BELOW~~ SURFACE

~~LEFT - &~~ PAV'T. - RIGHT ON & Rmt

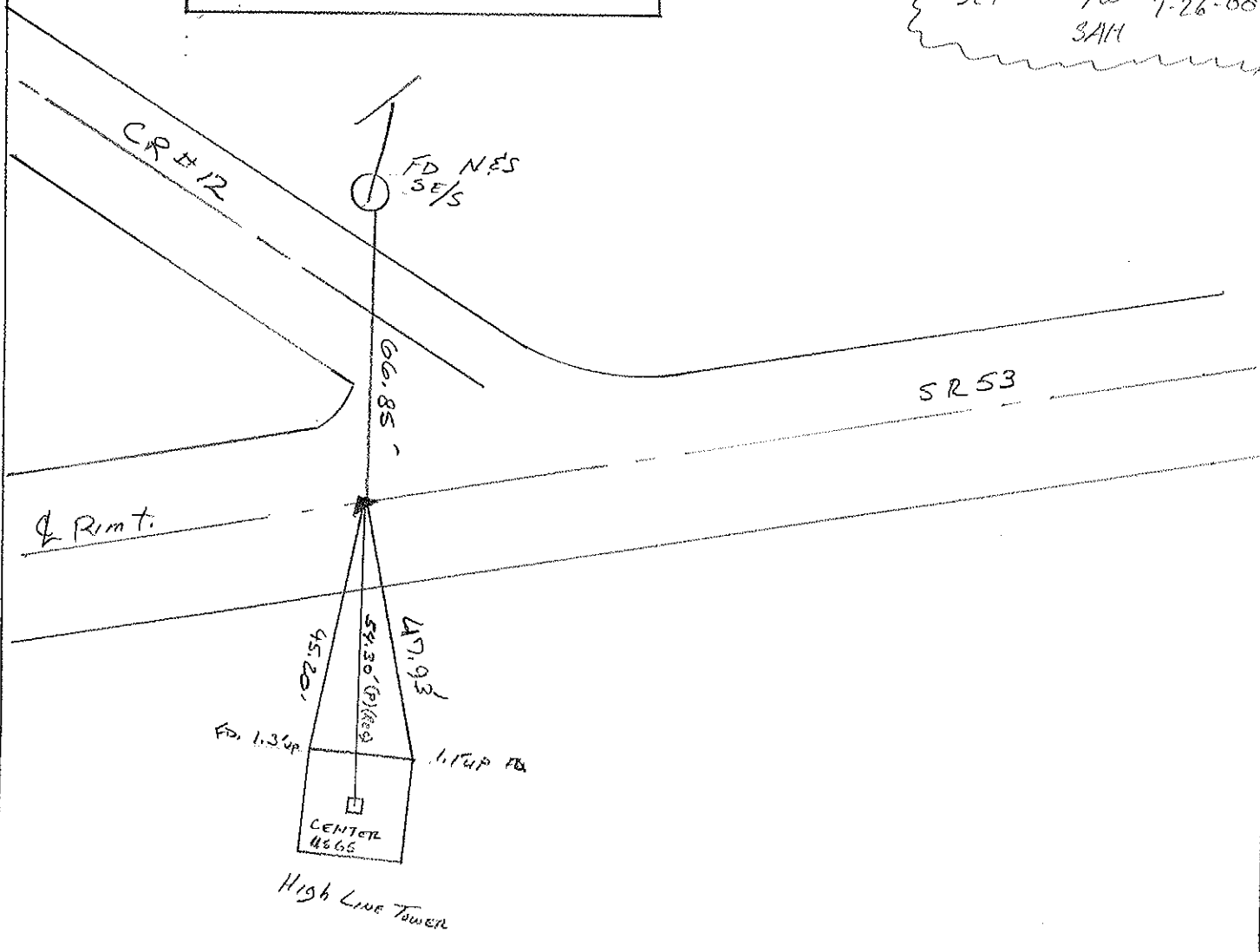
1/2 TORT EDGE PAVEMENT

S.L.M. 231124



RECORD: 12-05-1984  
 PI SURVEY & CONST  
 STA 230+50.55  
 $\Delta = 00^\circ 23'$  AT LEFT  
 SET PK & WASHER ATOP PK & WASHER  
 ATOP RR SPIKE

NOTE: SET PK & WASHER  
 8-05-1993 SLR  
 SET PK/W 7-26-00  
 SAM



# O.D.O.T. DISTRICT 2 SURVEY OFFICE

PERSONNEL

REFERENCE NO. 16

SHEET 16 OF 17

NOTES CHENEY

H.C. RIPPLE

DATE 6-22-1993

ROUTE SR#53

R.C. BARBOUR

WEATHER Sunny

COUNTY OTTAWA

GEYMAN

TEMP. 80°

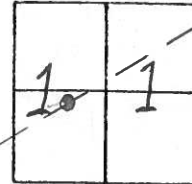
TOWNSHIP BAY

SECTION 11

T6 N R 16 E

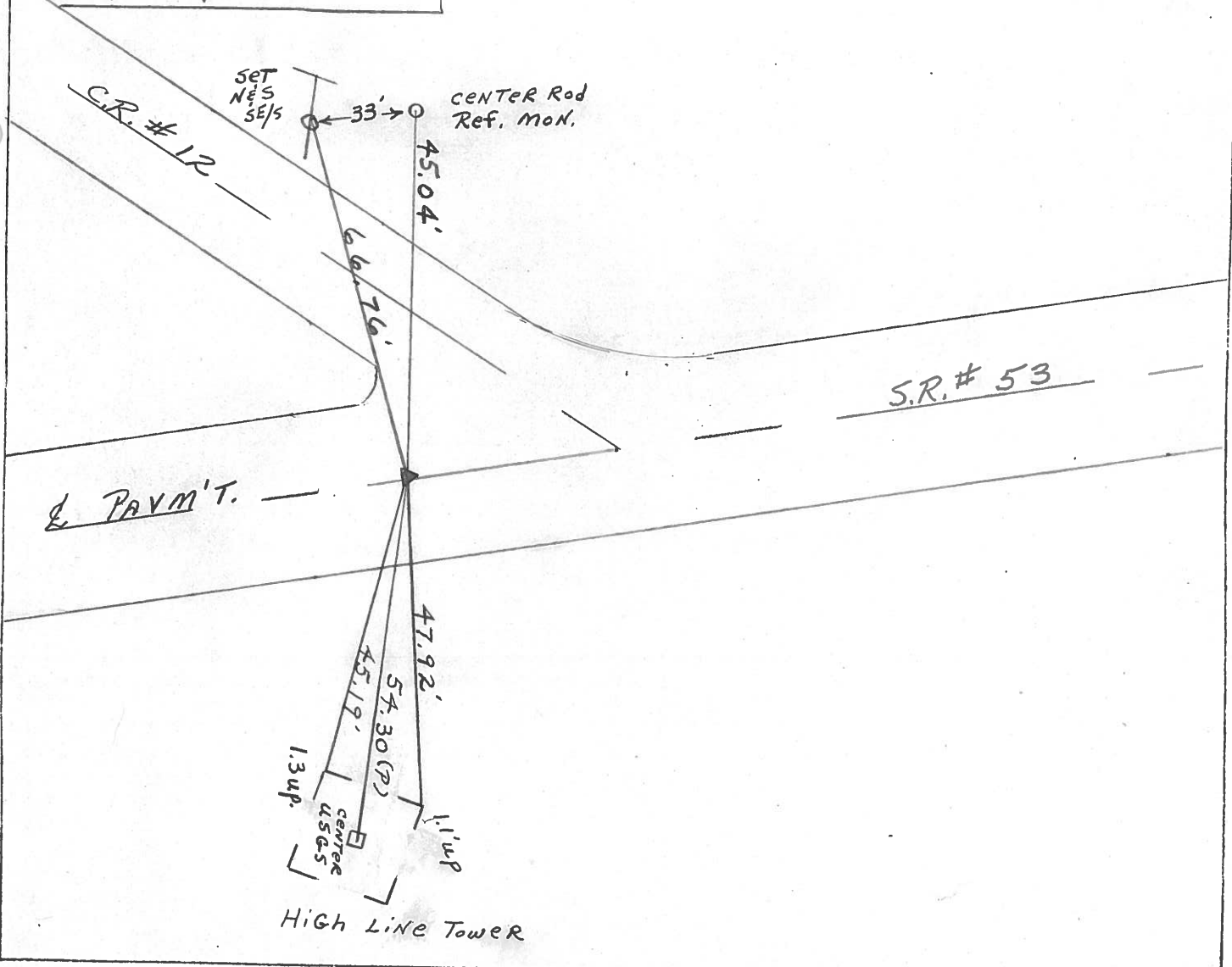
TYPE MONUMENT Fd. PK. & WASHER  
 ON SURFACE - ~~BELOW~~ ON SURFACE  
~~LEFT - & PAV'T. - RIGHT~~ ON & PAV'T.  
11.5' TO RT. EDGE PAVEMENT

S.L.M. 231+24



Record: 12-05-1984  
P.I. Survey & Const.  
STA. 230+50.55  
Δ = 00° 23' RT. LEFT  
Set PK. & Washer ATop TK. & Washer  
ATop RR. Spike

NOTE: Set PK. & Washer  
8-05-1993 J.L.R.



# O.D.O.T. DISTRICT 2 SURVEY OFFICE

PERSONNEL

REFERENCE NO. 16

SHEET 16 OF     

NOTES Cronin

H.C. Ripple

R.C. Barbour

Geyman

DATE 12/05/84

WEATHER overcast

TEMP. 30°

ROUTE #53

COUNTY Ottawa

TOWNSHIP Bay

SECTION 11

T. 6 N R. 16 E

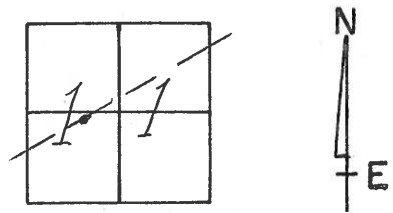
TYPE MONUMENT RR spike

ON SURFACE - BELOW below

LEFT - ☉ PAV'T. - RIGHT ☉

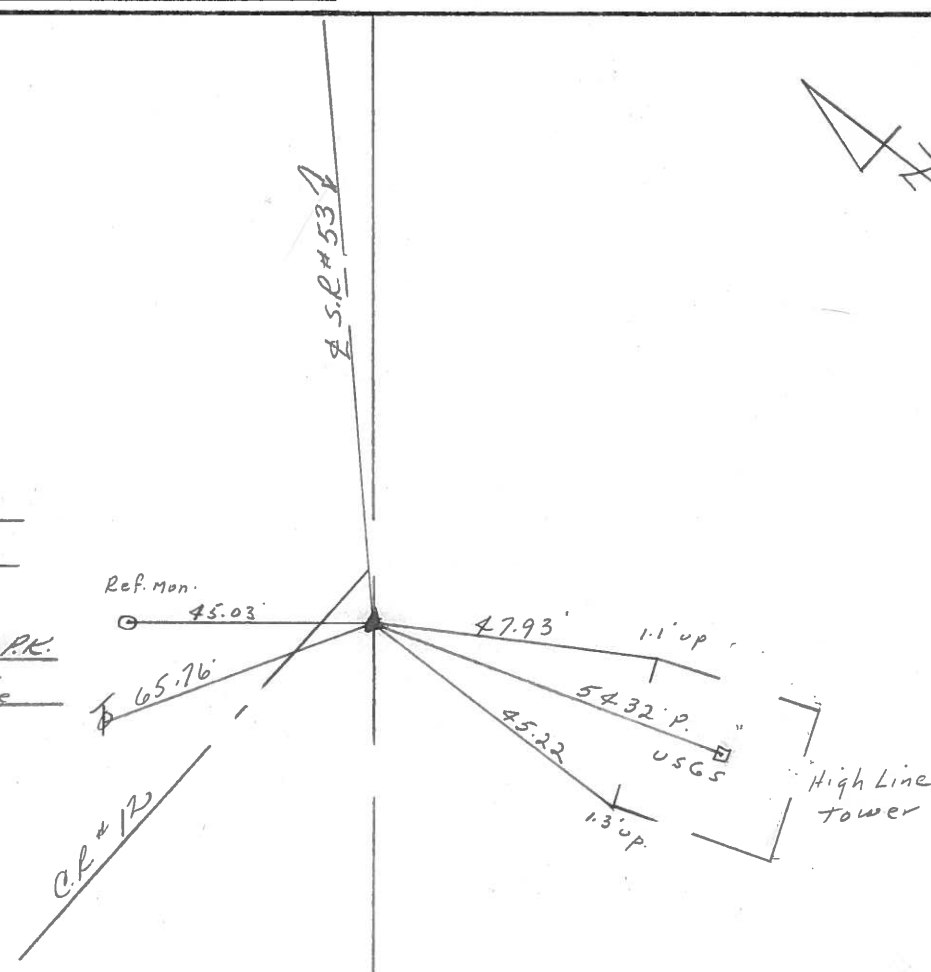
TO      EDGE PAVEMENT

S.L.M.     



15

$\Delta = 00^{\circ}23' Lt. Rec$   
P.I. Survey & Const.  
230 + 50.55  
Set P.K. & washer at top P.K.  
& washer at top RR spike



PERSONNEL	TITLE	PERSONNEL	TITLE

COUNTY OTTAWA DATE 3-15-77  
4-19-77  
 S. R. 53 WEATHER Fair  
 SEC. 10 E 11 TEMP. 55° 30

DESCRIPTION Bay Twp. LEFT CENTER LINE RIGHT JOB NO.

Resot. P.K. Nails, washers  
 6-16-76

3/14/84  
 sunny  
 42°  
 X

239+75.80  
 P.K. Nail

**(17)** 16 ORN Light Pole  
 1' up

New "X"  
 "X" in corner  
 tile  
 Twp. Rd. #1  
 south

Mon.  
 24" Maple

broken P.K.  
 head off

4/2/84  
 sunny 50°

P.I. & survey  
 & const.  
 230+50.55  
 $\Delta = 0^\circ 23' Lt.$   
 small R. R. spk.

**(16)** 15

Ge. Rd. #1  
 West

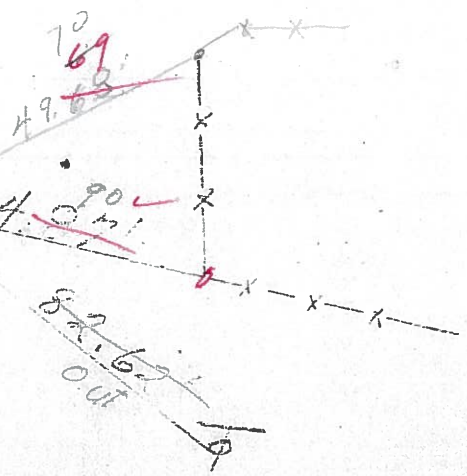
U.S.G.S.  
 High Line Tower  
 13' up

**(15)** Twp. Rd. #125  
 North

209+50.65  
 P.K. Nail

P.K. washer

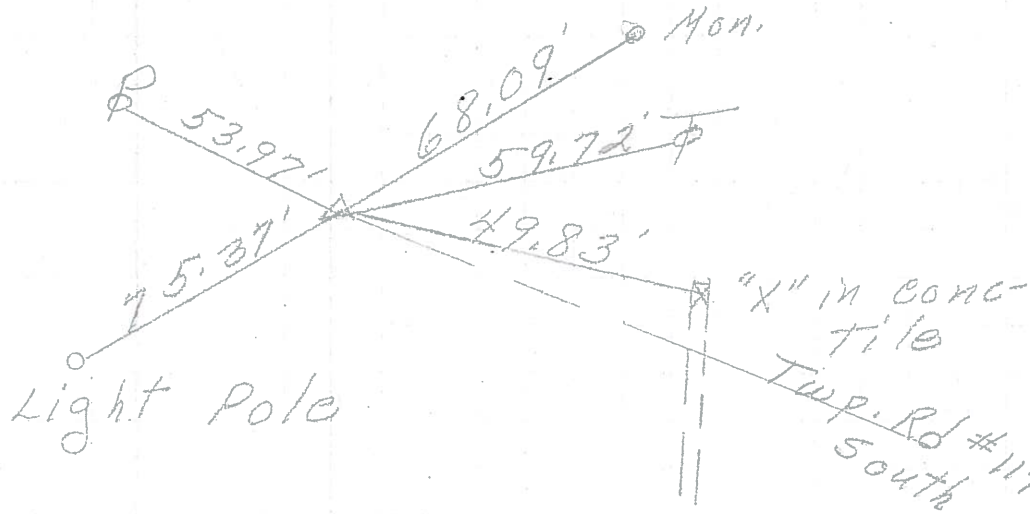
14 "X" on N.W.  
 cor. line  
 Mon.



PERSONNEL	TITLE	PERSONNEL	TITLE	COUNTY	DATE	S. R.	WEATHER	SEC.	TEMP.	DESCRIPTION	JOB NO.
				Ottawa	4-19-72	53	Fair	10 E 11	55°	Bay Twp.	

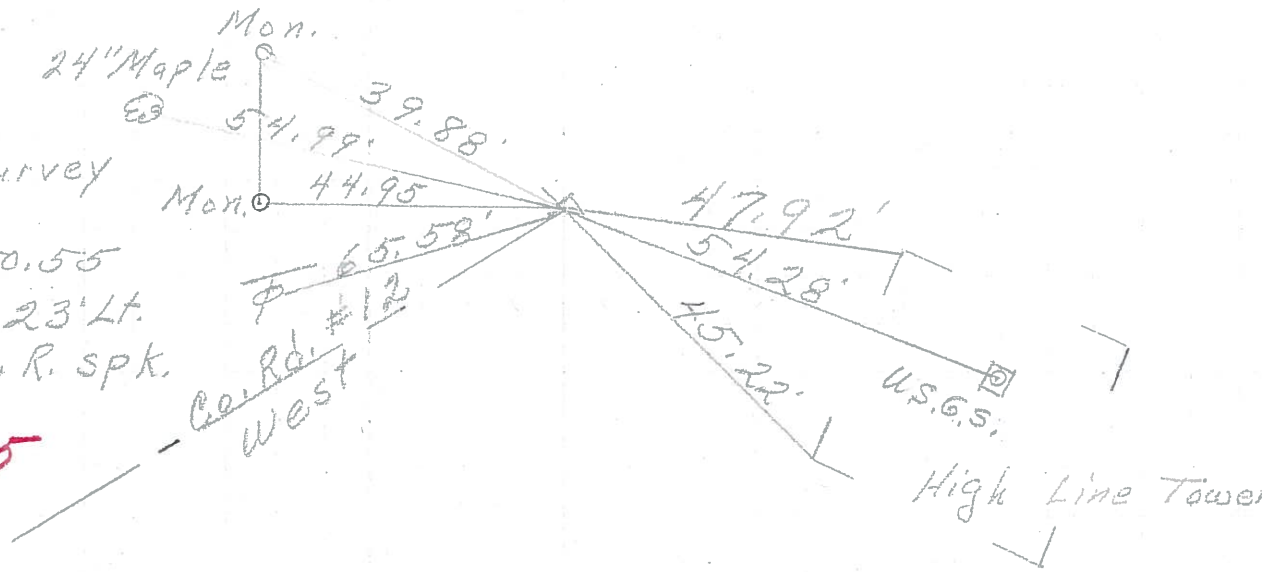
239+75.80  
P.K. Nail

⑦ 16



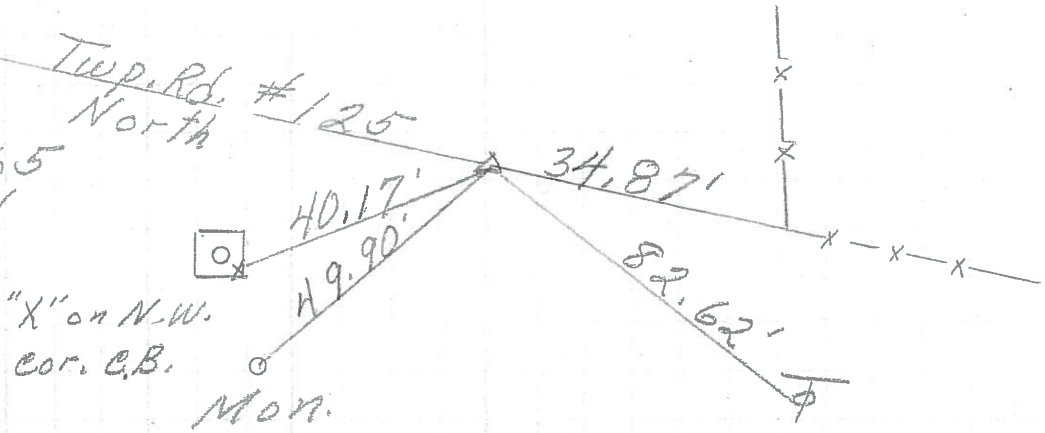
P.I. & survey  
of const.  
230+50.55  
 $\Delta = 0^\circ 23' Lt.$   
small R. R. spk.

⑩ 15

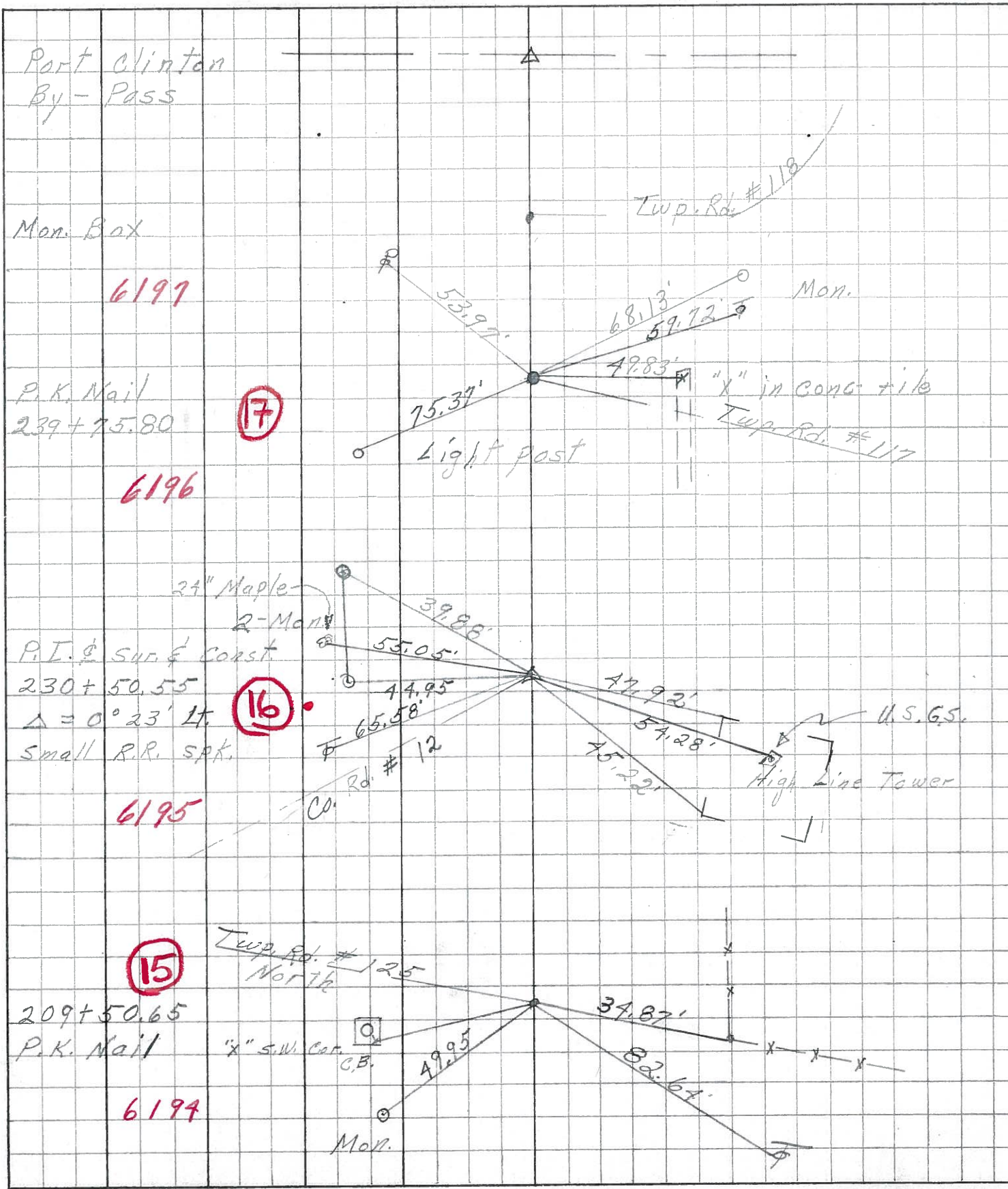


209+50.65  
P.K. Nail

⑪ 14



PERSONNEL	TITLE	PERSONNEL	TITLE	COUNTY	DATE	S. R.	WEATHER	TEMP.
<u>Schneider</u>				<u>Ottawa</u>	<u>7-12-68</u>	<u>53</u>	<u>Fair</u>	<u>80°</u>
<u>Mosser</u>								
<u>Rending</u>								
<u>Potts</u>								
DESCRIPTION <u>Ties for Control Points</u>				JOB NO.				



PERSONNEL	TITLE	PERSONNEL	TITLE	COUNTY	DATE
Morrison		Jameson		OTTAWIA	FEB. 4, 1964
Sworden				S. R. #53	WEATHER Clear.
Bowers				SEC North of San Co. Line	TEMP +32°
Mercer					

DESCRIPTION Ties to Control points LEFT CENTER LINE RIGHT JOB NO.

