

O.D.O.T. DISTRICT 2 SURVEY OFFICE (USE ONLY)

PERSONNEL _____ REFERENCE NO. 17 SHEET 19 OF 20
 NOTES LEU DATE 3/26/17 ROUTE SR 53
 H.C. HOMAN WEATHER OVERCAST COUNTY OTTAWA
 R.C. LEU TEMP. 53° TOWNSHIP BAY
 _____ SECTION 11
 DWG BY MILLER PID 92368 T 6 N R 16 E

TYPE MONUMENT P.K./WASHER

ON SURFACE - ~~BELOW~~ ON _____

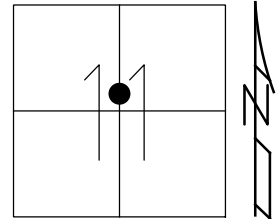
OFFSET \varnothing PAVEMENT ON _____ LT : RT

12.5' TO LT EDGE PAVEMENT

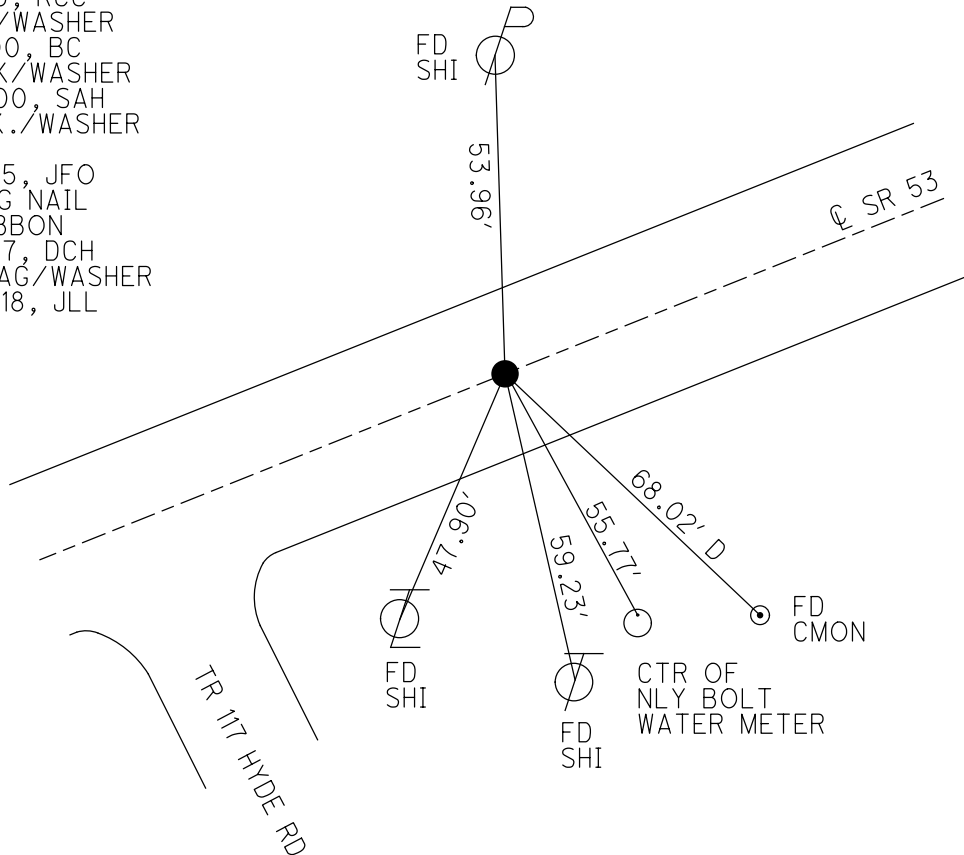
STATION: 239+87.71

HORZ.DATUM: NAD83 (2011) GEOID: 2012A

GRID: NORTHING: 666462.920 EASTING: 1836560.930



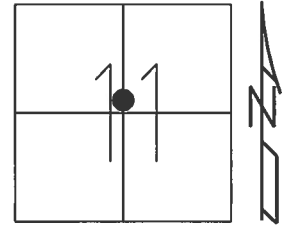
RECORD: P.O.T.
 STA. 239+75.80
 SET PK/WASHER
 ATOP PK/WASHER
 ATOP PK
 12-5-84
 SET PK/WASHER
 8-5-93, RCC
 FD PK/WASHER
 5-31-00, BC
 SET PK/WASHER
 7-26-00, SAH
 FD P.K./WASHER
 REF17
 6-23-15, JFO
 FD MAG NAIL
 W/ RIBBON
 3-26-17, DCH
 SET MAG/WASHER
 12-27-18, JLL



O.D.O.T. DISTRICT 2 SURVEY OFFICE (USE ONLY)

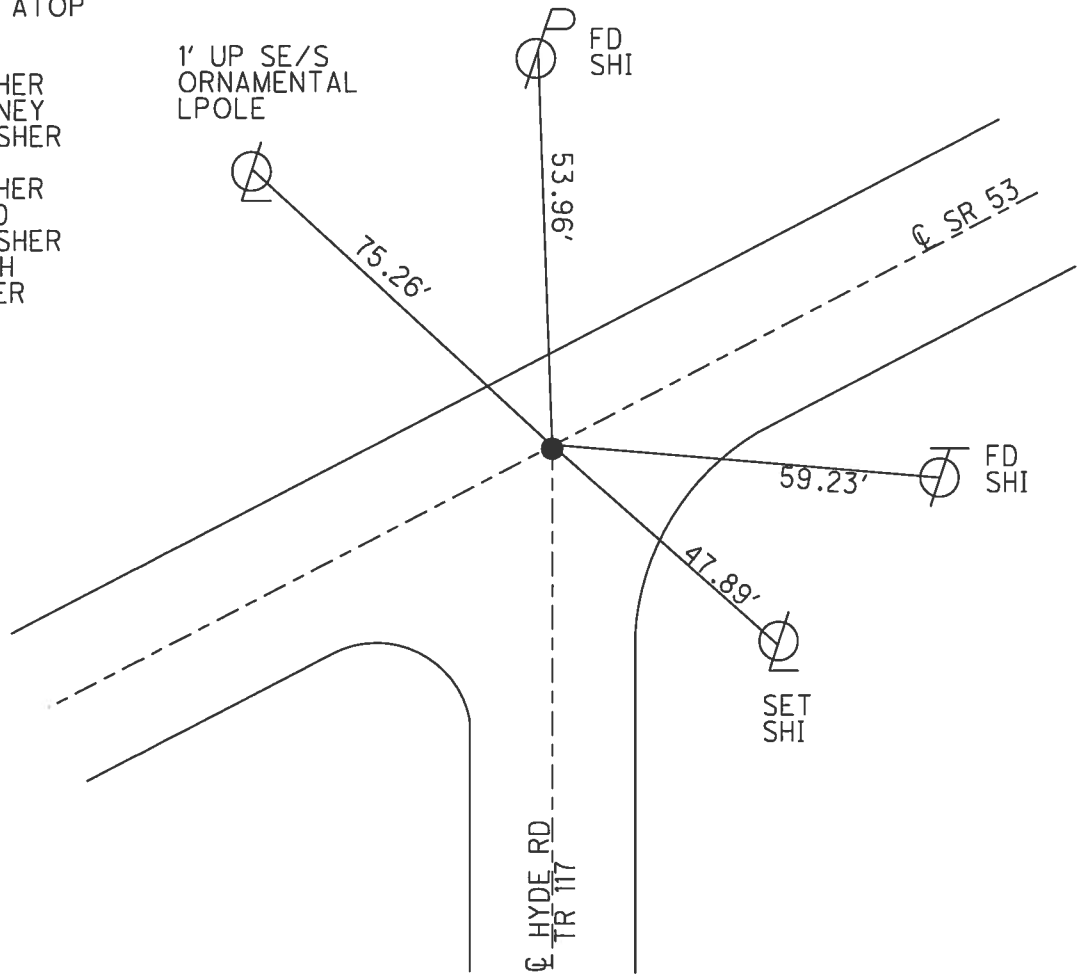
PERSONNEL _____ REFERENCE NO. 17 SHEET 1 OF 7
 NOTES ROUSOS DATE 4/5/13 ROUTE SR 53
 H.C. ROUSOS WEATHER CLEAR COUNTY OTTAWA
 R.C. LAU TEMP. 40° TOWNSHIP BAY
 _____ SECTION 11
 _____ T 6 N R 16 E

TYPE MONUMENT P.K./WASHER
 ON SURFACE - ~~BELOW~~ ON
 LEFT - ☉ PAV'T - RIGHT ON
12.5' TO LT EDGE PAVEMENT
 S.L.M. 239+82.42



Grid: Northing: 666462.996 Easting: 1836560.885

RECORD: P.O.T.
 STA. 239+75.8
 SET P.K./WASHER ATOP
 P.K./WASHER ATOP
 P.K.NAIL
 12/5/84
 FD P.K./WASHER
 6/9/92, CHENEY
 SET P.K./WASHER
 8/5/93, RCC
 FD P.K./WASHER
 5/31/00, BVD
 SET P.K./WASHER
 7/26/00, SAH
 FD P.K.WASHER
 CP100
 4/5/13, TMR



O.D.O.T. DISTRICT 2 SURVEY OFFICE

PERSONNEL

REFERENCE NO. 17

SHEET 17 OF 17

NOTES CORDES

H.C. VAN DUSEN

R.C. BROWN

DATE 5-31-00

WEATHER Fair

TEMP. 80°F

ROUTE #53

COUNTY OTTAWA

TOWNSHIP Bay

SECTION 11

T6 N R16 E

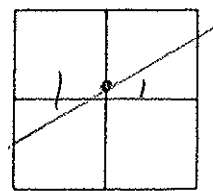
TYPE MONUMENT PK WASHER

ON SURFACE ~~BELOW~~ YES

~~LEFT~~ & PAVT. ~~RIGHT~~ YES

12.5 TO LT EDGE PAVEMENT

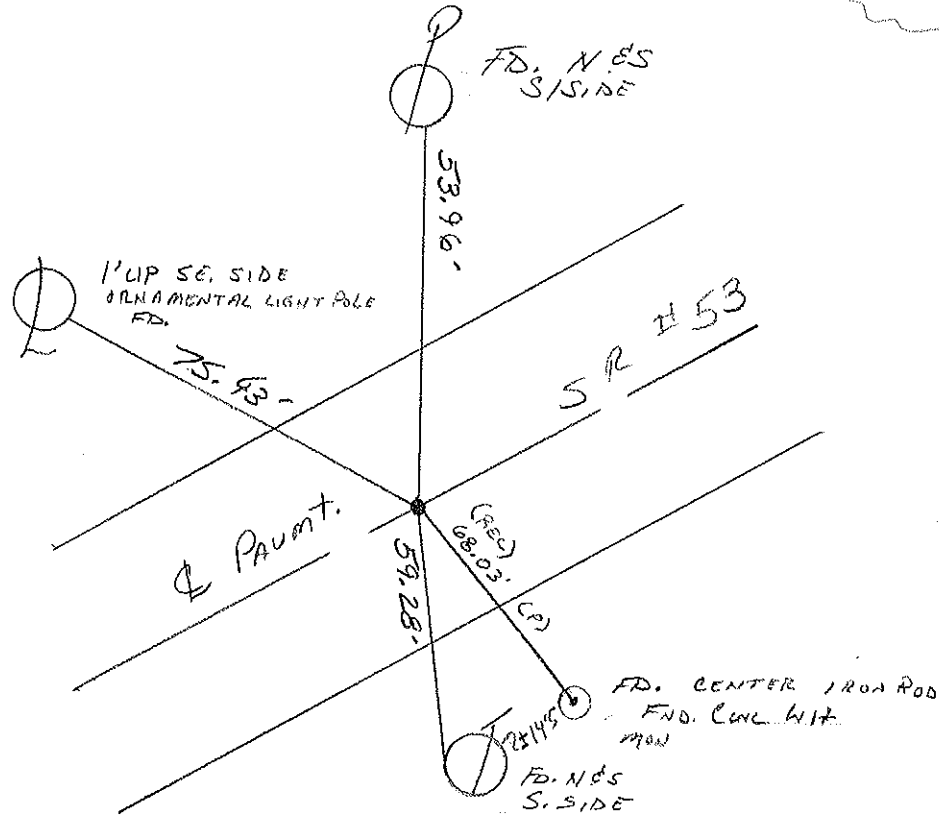
S.L.M. 240257



RECORD: 12-5-1984
 P.O.T. STA. 239+75.80
 SET PK WASHER AT OP
 PK WASHER AT OP. PK

SET PK WASHER
 8-5-1993
 RCL

Set PKW
 7-26-00
 SAH



O.D.O.T. DISTRICT 2 SURVEY OFFICE

PERSONNEL

REFERENCE NO. 17

SHEET 17 OF 17

NOTES CHENEY

H.C. RIPPLE

DATE 6-22-1993

ROUTE #53

R.C. BARBOUR

WEATHER FAIR

COUNTY OTTAWA

GREYMAN

TEMP. 80°

TOWNSHIP BAY

SECTION 11

T. 4N R. 16E

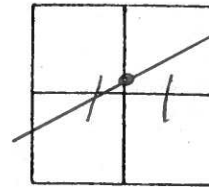
TYPE MONUMENT PK/WASHER

ON SURFACE - ~~BELOW~~ ON

~~LEFT - C. PAV'T. - RIGHT~~ ON

12.5 TO LT. EDGE PAVEMENT

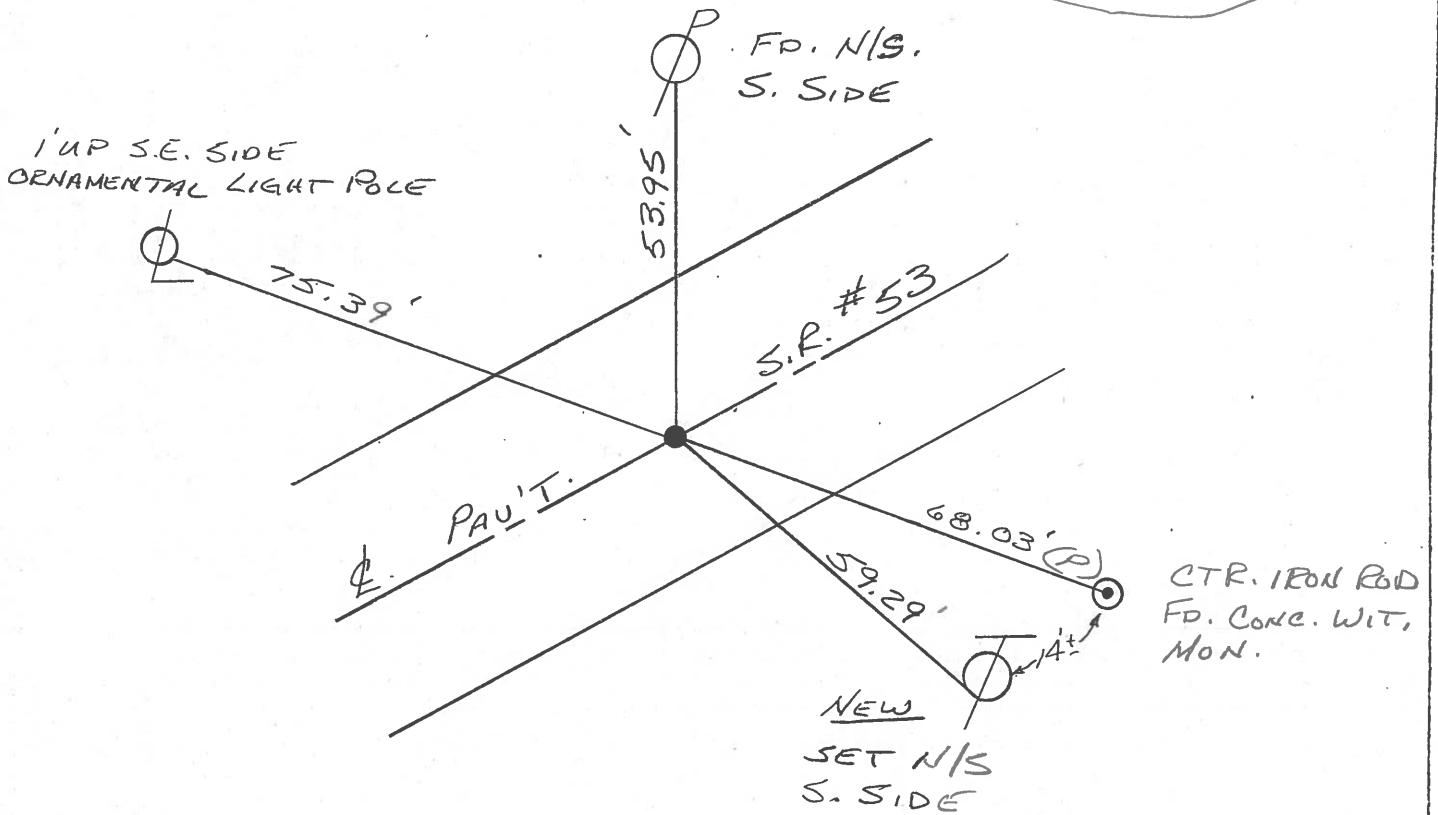
S.L.M. 240+57



RECORD: 12-5-1984

P.O.T. STA. 239+75.80
 SET PK/WASHER ATOP
 PK/WASHER ATOP PK.

SET PK/WASHER
 8-5-1993
 RCC

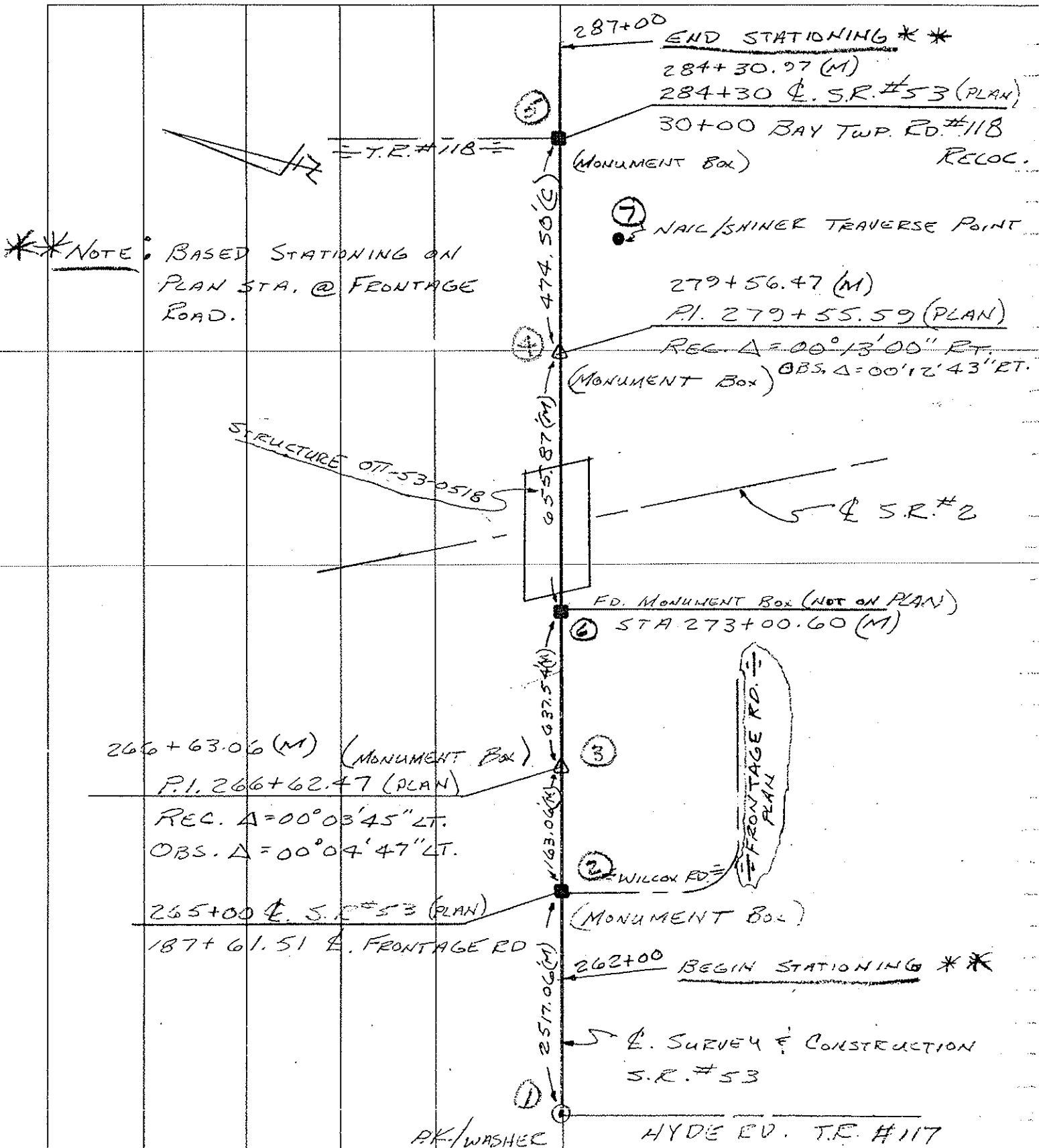


PERSONNEL	TITLE	PERSONNEL	TITLE
CHENEY			
PIPPLE			
BARBOUR			
GEYMAN			

COUNTY OTTAWA DATE 6-9-1992
 S. R. #2-53 OVERPASS WEATHER SUNNY
 SEC. 16.63 TEMP. 70°

DESCRIPTION TITLE SHEET JOB NO. 022960

LEFT CENTER LINE RIGHT



O.D.O.T. DISTRICT 2 SURVEY OFFICE

PERSONNEL

REFERENCE NO. 17

SHEET 17 OF

NOTES Cronin

H.C. Ripple

R.C. Barbour

Geyman

DATE 12/05/84

WEATHER overcast

TEMP. 30°

ROUTE # 53

COUNTY Ottawa

TOWNSHIP Bay

SECTION 11

T 6 N 16 E

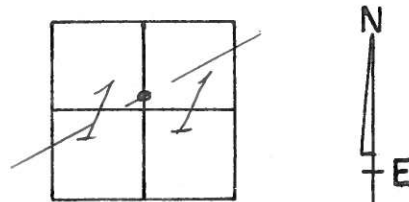
TYPE MONUMENT P.K.

ON SURFACE - BELOW Below

LEFT - ☉ PAV'T. - RIGHT ☉

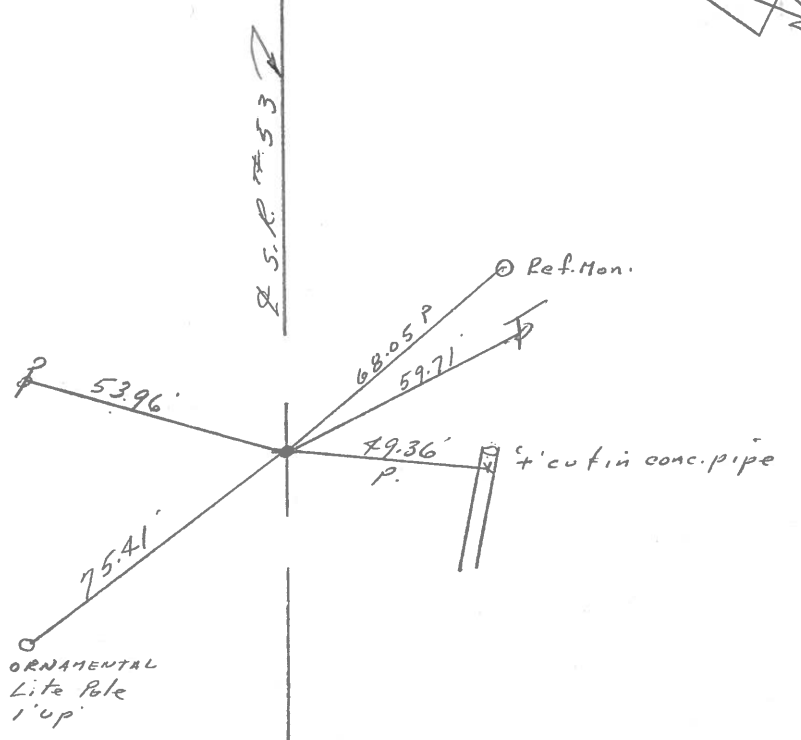
TO EDGE PAVEMENT

S.L.M.



16

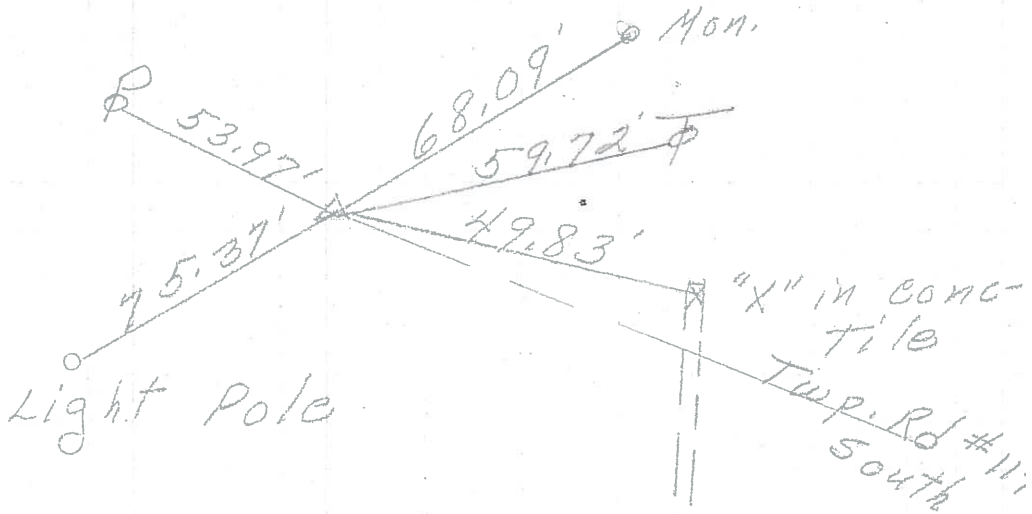
P.O.T.
239 + 75.80
 Set P.K. & washer atop P.K. & washer atop P.K.



PERSONNEL	TITLE	PERSONNEL	TITLE	COUNTY	DATE
				Ottawa	4-19-72
				S. R. 53	WEATHER Fair
				SEC. 10 E 11	TEMP. 55°
DESCRIPTION	Bay Twp.			JOB NO.	
	LEFT	CENTER LINE	RIGHT		

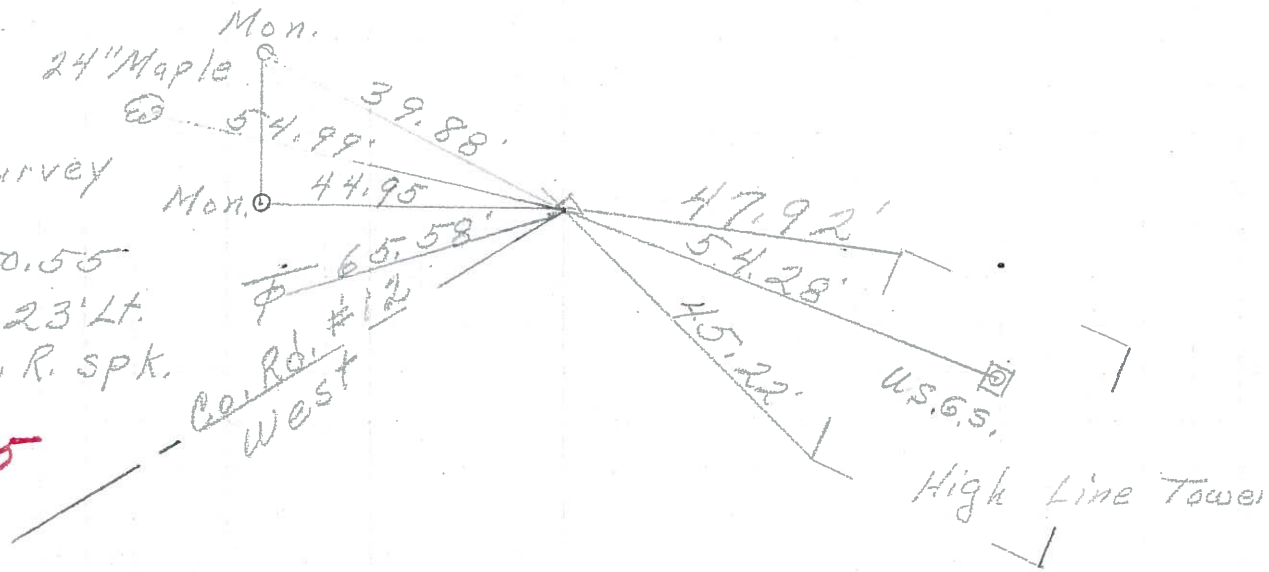
239+75.80
P.K. Nail

• ⑦ 16



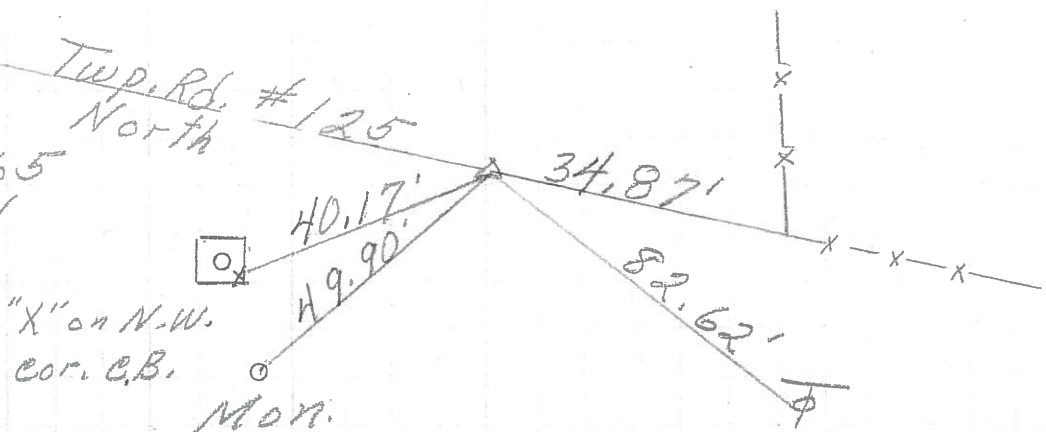
P.I. & survey
const.
230+50.55
 $\Delta = 0^\circ 23' Lt.$
small R. R. spk.

⑩ 15



209+50.65
P. K. Nail

⑮ 14



PERSONNEL	TITLE	PERSONNEL	TITLE	COUNTY	DATE
<u>Schneider</u>				<u>Ottawa</u>	<u>7-12-68</u>
<u>Mosser</u>				S. R. <u>53</u>	WEATHER <u>Fair</u>
<u>Reading</u>				SEC. <u>San. Co. Line - North</u>	TEMP. <u>80°</u>
<u>Patte</u>					

DESCRIPTION Ties for Control Points JOB NO. _____

