

O.D.O.T. DISTRICT 2 SURVEY OFFICE (USE ONLY)

PERSONNEL

REFERENCE NO. 19

SHEET 3 OF 6

NOTES ROUSOS DATE 4-5-13
 H.C. ROUSOS WEATHER CLEAR
 R.C. LAU TEMP. 40°

ROUTE SR 53
 COUNTY OTTAWA
 TOWNSHIP BAY
 SECTION 12
 T 6 N R 16 E

DWG BY JAMES PID 92368

TYPE MONUMENT MONBOX W/ 1" IPIN

ON SURFACE - BELOW ON

OFFSET \varnothing PAVEMENT ON LT : RT

TO EDGE PAVEMENT

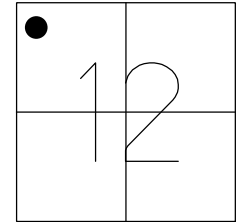
STATION: 273+00

HORZ.DATUM: NAD83 2011

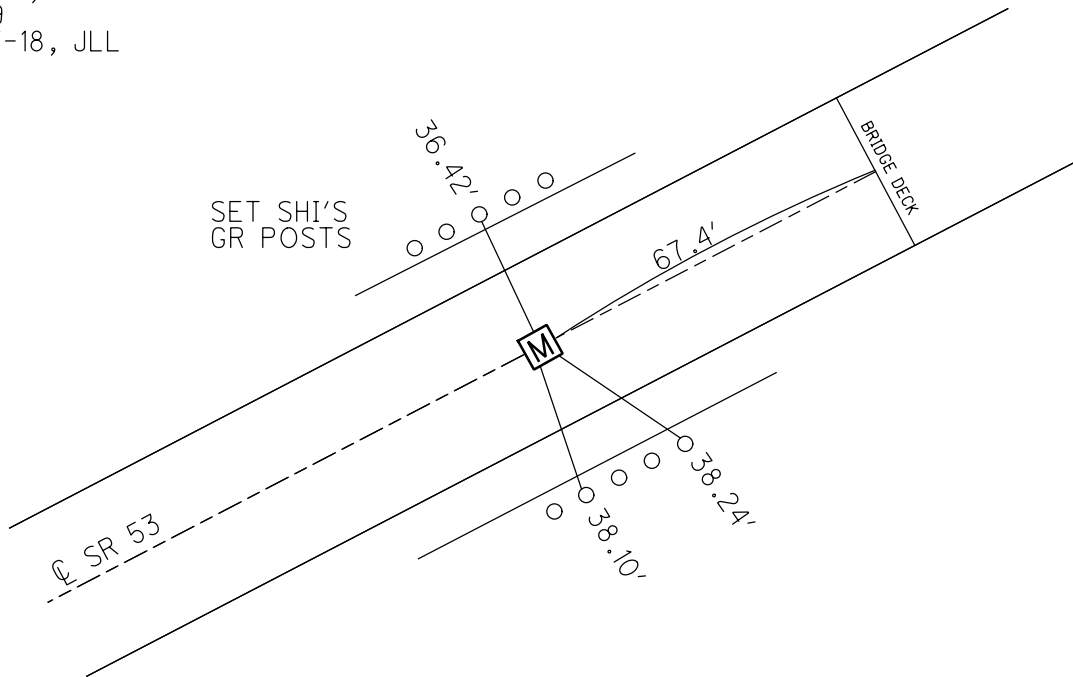
GEOID: NAVD88 2012A

GRID: NORTHING: 668078.114

EASTING: 1839459.360



RECORD:
 STA. 273+00.6
 FD MONBOX
 6/9/92, CHENEY
 FD MONBOX
 W/ 1" IPIN
 CP103
 4/5/13, TMR
 REF19
 12-27-18, JLL



O.D.O.T. DISTRICT 2 SURVEY OFFICE (USE ONLY)

PERSONNEL _____ REFERENCE NO. 19 SHEET 4 OF 7

NOTES ROUSOS DATE 4/5/13 ROUTE SR 53

H.C. ROUSOS WEATHER CLEAR COUNTY OTTAWA

R.C. LAU TEMP. 40° TOWNSHIP BAY

SECTION 12

T 6 N R 16 E

TYPE MONUMENT MONBOX W/ 1" IPIN

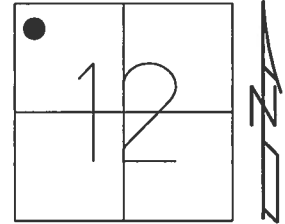
ON SURFACE - ~~BELOW~~ ON

LEFT - ☉ PAV'T - RIGHT ON

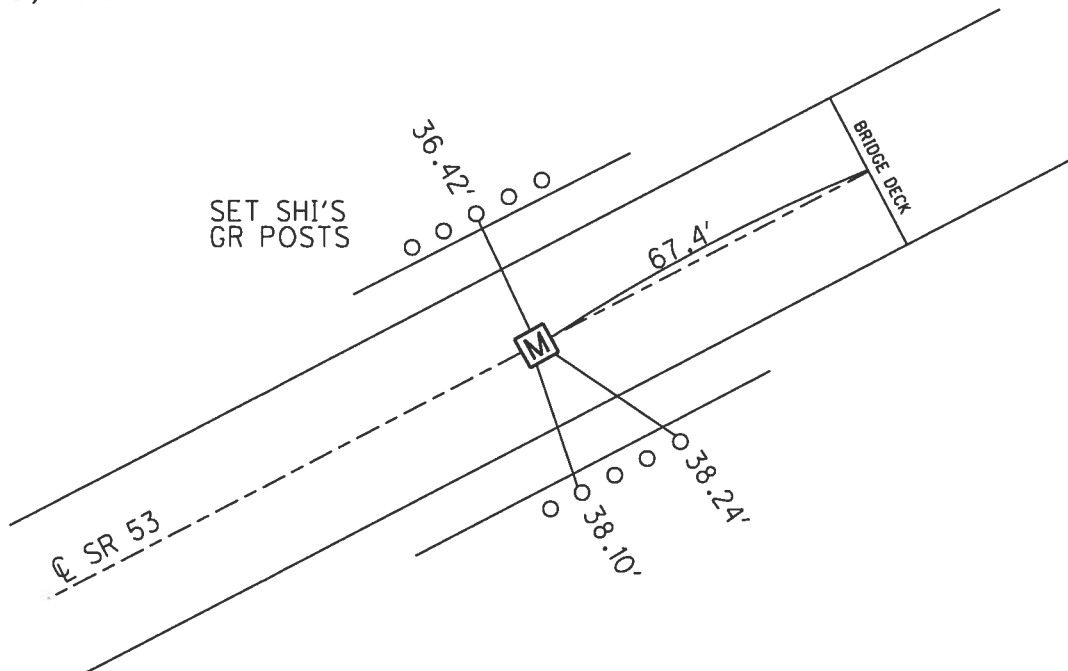
- TO - EDGE PAVEMENT

S.L.M. 273+00.53

Grid: Northing: 668078.191 Easting: 1839459.332



RECORD:
STA. 273+00.6
FD MONBOX
6/9/92, CHENEY
FD MONBOX
W/ 1" IPIN
CP103
4/5/13, TMR

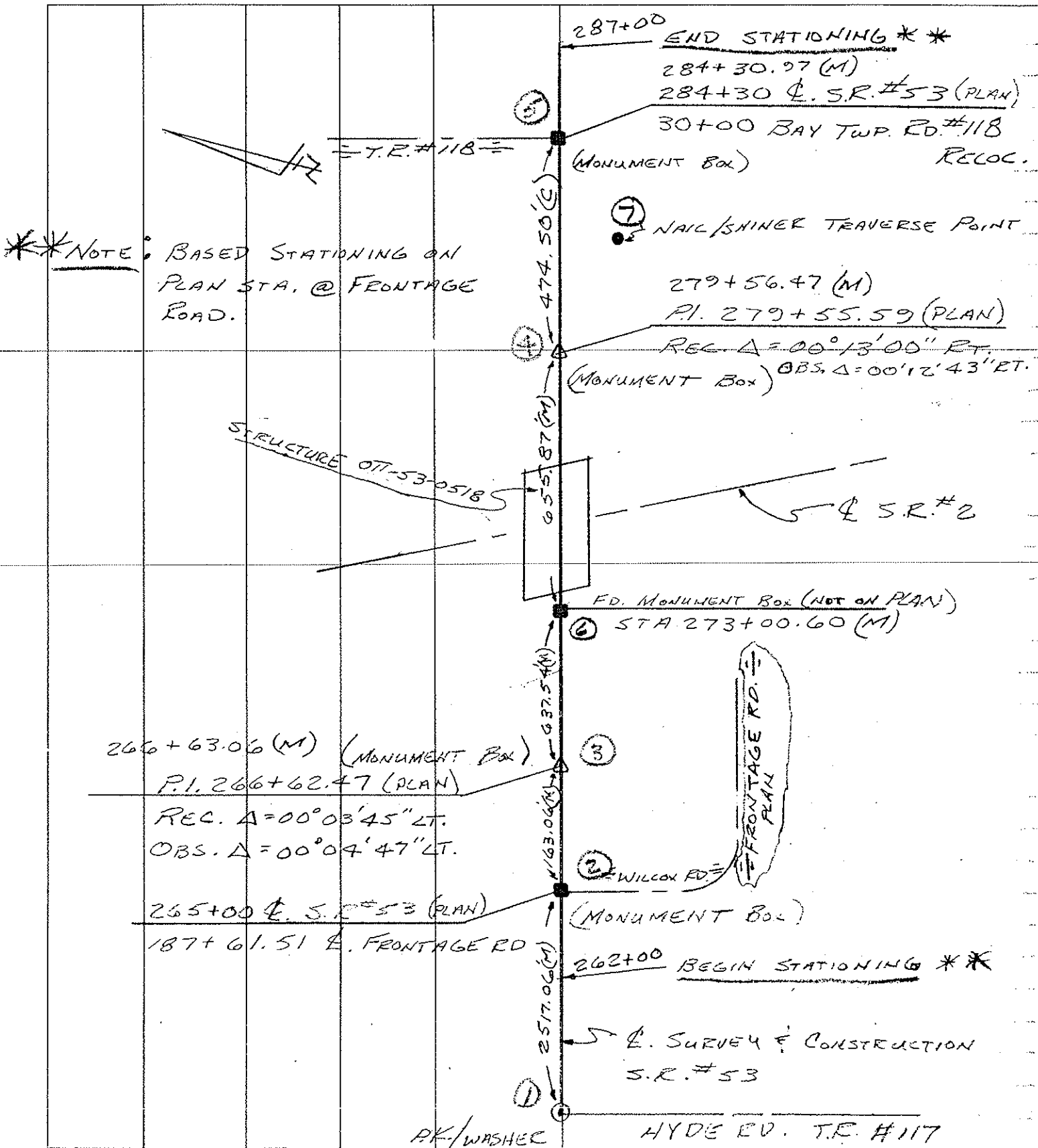


PERSONNEL	TITLE	PERSONNEL	TITLE
CHENEY	M		
PIPPLE	Ø		
BARBOUR	T		
GEYMAN	Ø		

COUNTY OTTAWA DATE 6-9-1992
 S. R. #2-53 OVERPASS WEATHER SUNNY
 SEC. 16.63 TEMP. 70°

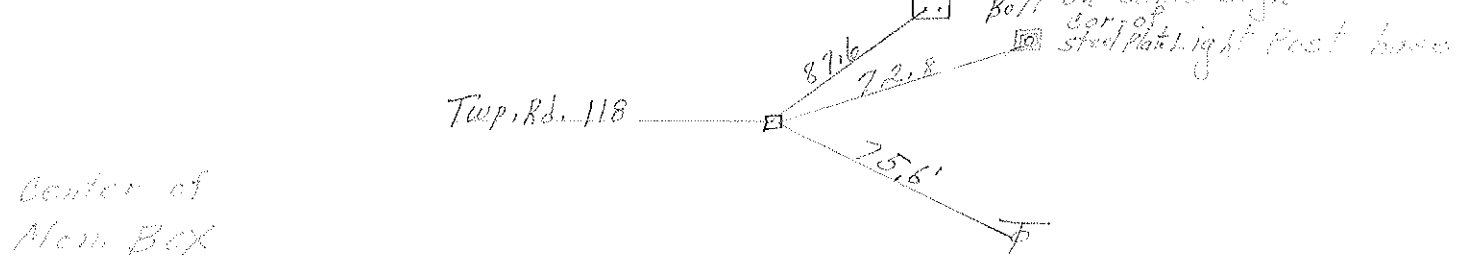
DESCRIPTION TITLE SHEET JOB NO. 022960

LEFT CENTER LINE RIGHT

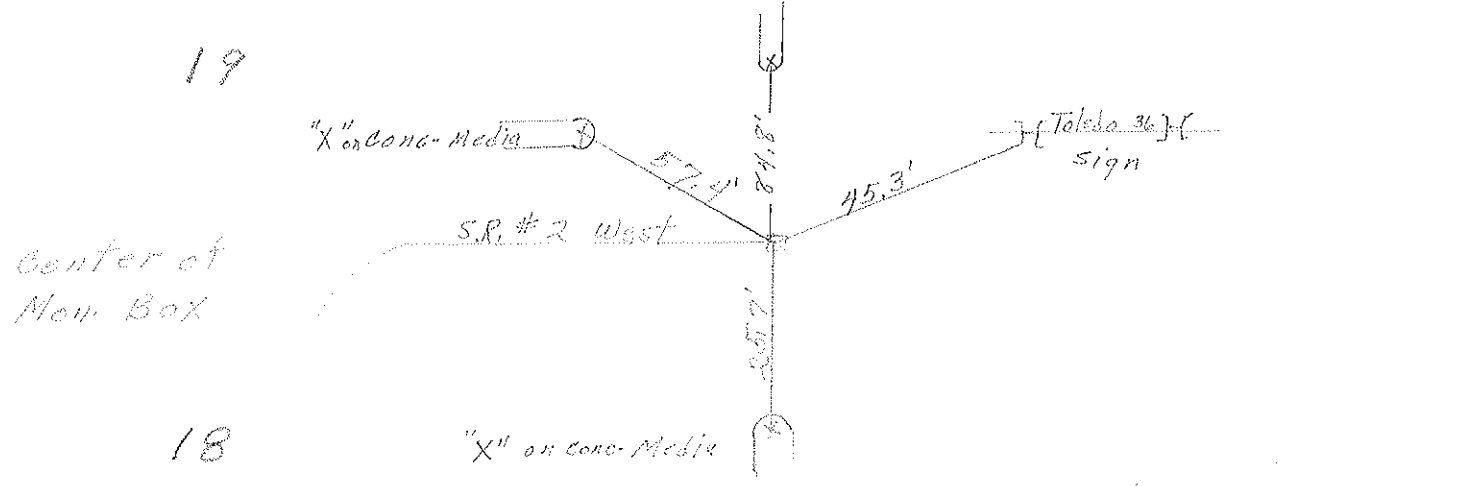


PERSONNEL	TITLE	PERSONNEL	TITLE	COUNTY	DATE
<u>Schneider</u>		<u>Vinson</u>		<u>Attawa</u>	<u>4-19-72</u>
<u>Masser</u>				S. R. <u>53</u>	WEATHER <u>cloudy</u>
<u>Barbour</u>				SEC. <u>Sandy Lake Co. Line North</u>	TEMP. <u>75°</u>
<u>Coyman</u>					

DESCRIPTION _____ LEFT _____ CENTER LINE _____ RIGHT _____ JOB NO. _____

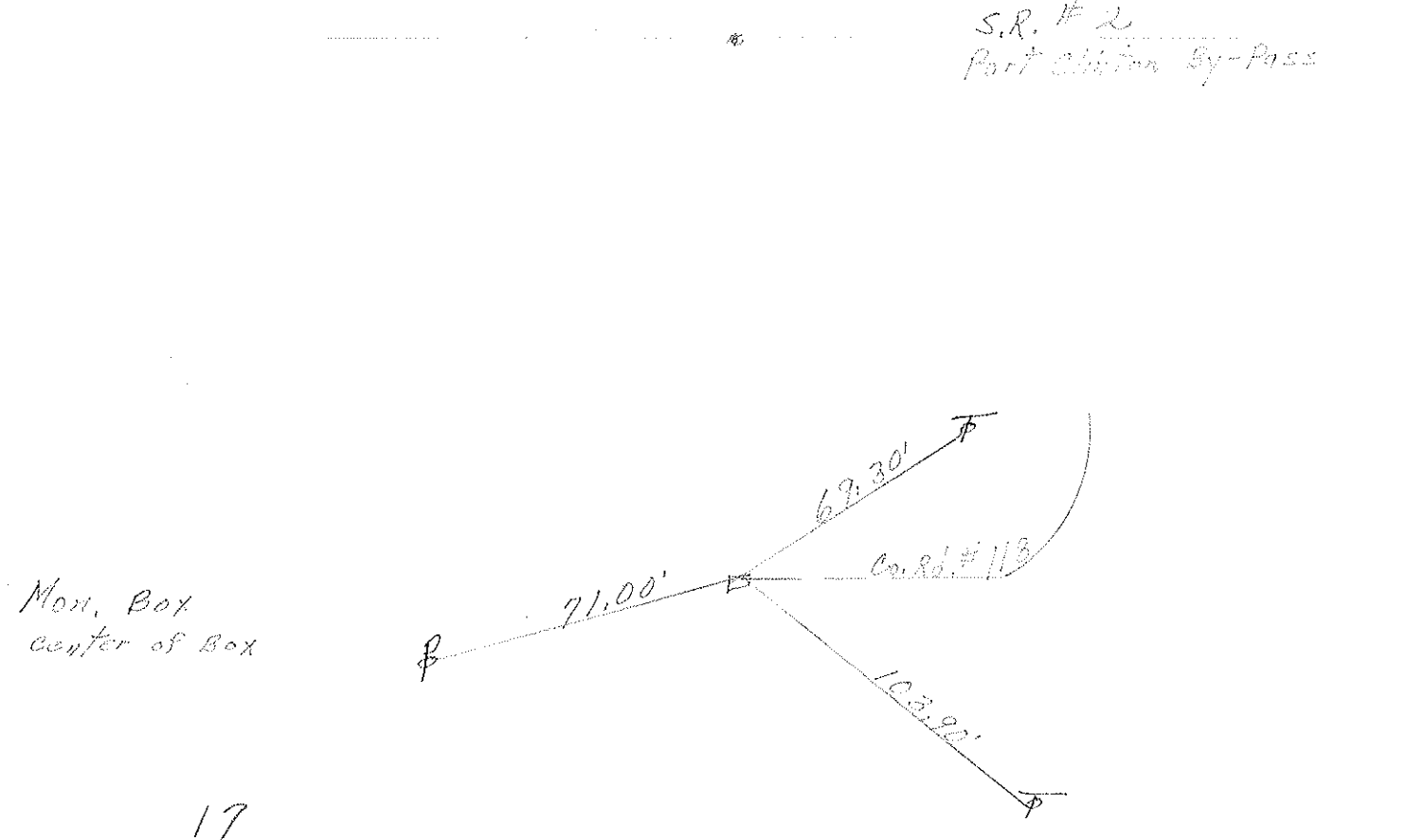


19



18

S.R. #2
Part of the By-Pass



17