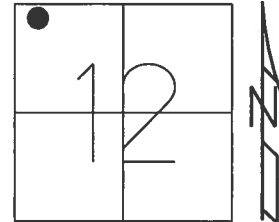


O.D.O.T. DISTRICT 2 SURVEY OFFICE (USE ONLY)

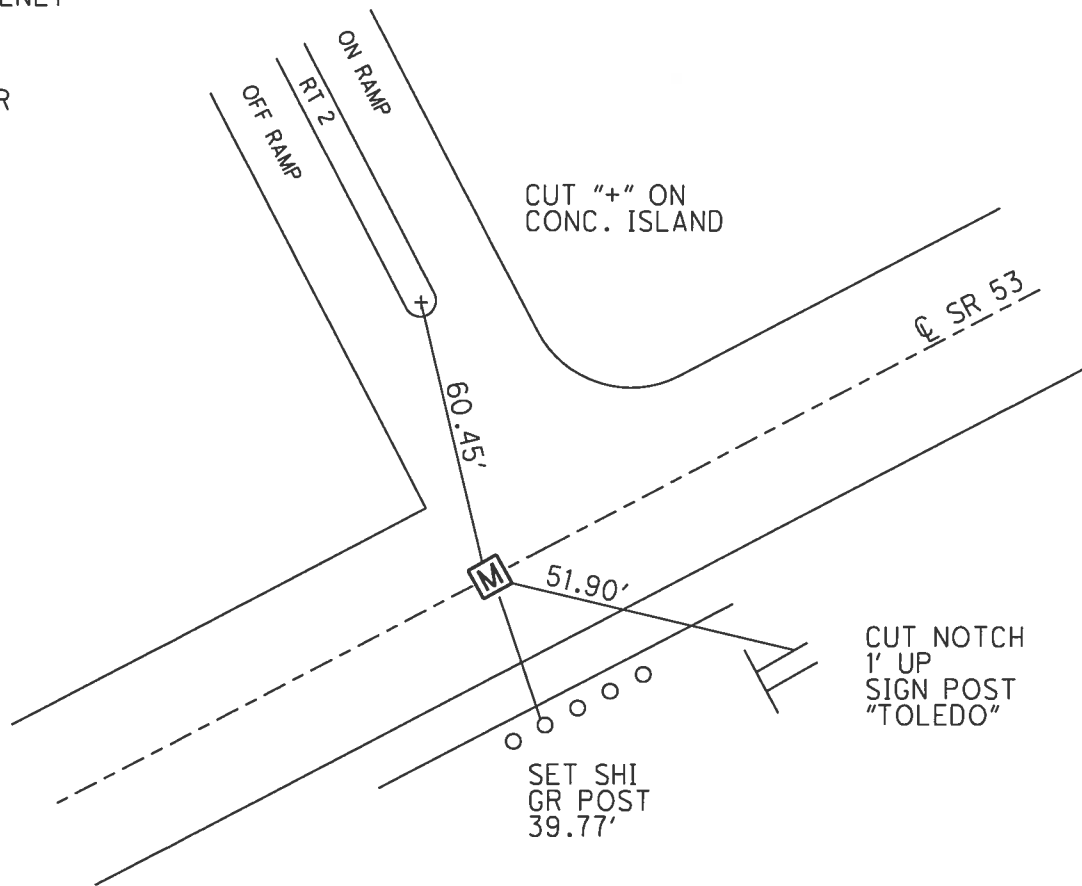
PERSONNEL _____ REFERENCE NO. 20 SHEET 5 OF 7
 NOTES ROUSOS DATE 4/5/13 ROUTE SR 53
 H.C. ROUSOS WEATHER CLEAR COUNTY OTTAWA
 R.C. LAU TEMP. 40° TOWNSHIP BAY
 _____ SECTION 12
 _____ T 6 N R 16 E

TYPE MONUMENT MONBOX W/ 1" IPIN
 ON SURFACE - ~~BELOW~~ ON
 LEFT - ☉ PAV'T - RIGHT ON
- TO - EDGE PAVEMENT
 S.L.M. 279+55.65



Grid: Northing: 668397.309 Easting: 1840031.471

RECORD: P.I.
 STA. 279+55.59
 $\Delta = 0^\circ 13' 00''$ RT REC
 FD MONBOX
 6/9/92, CHENEY
 FD MONBOX
 W/ 1" IPIN
 CP104
 4/5/13, TMR

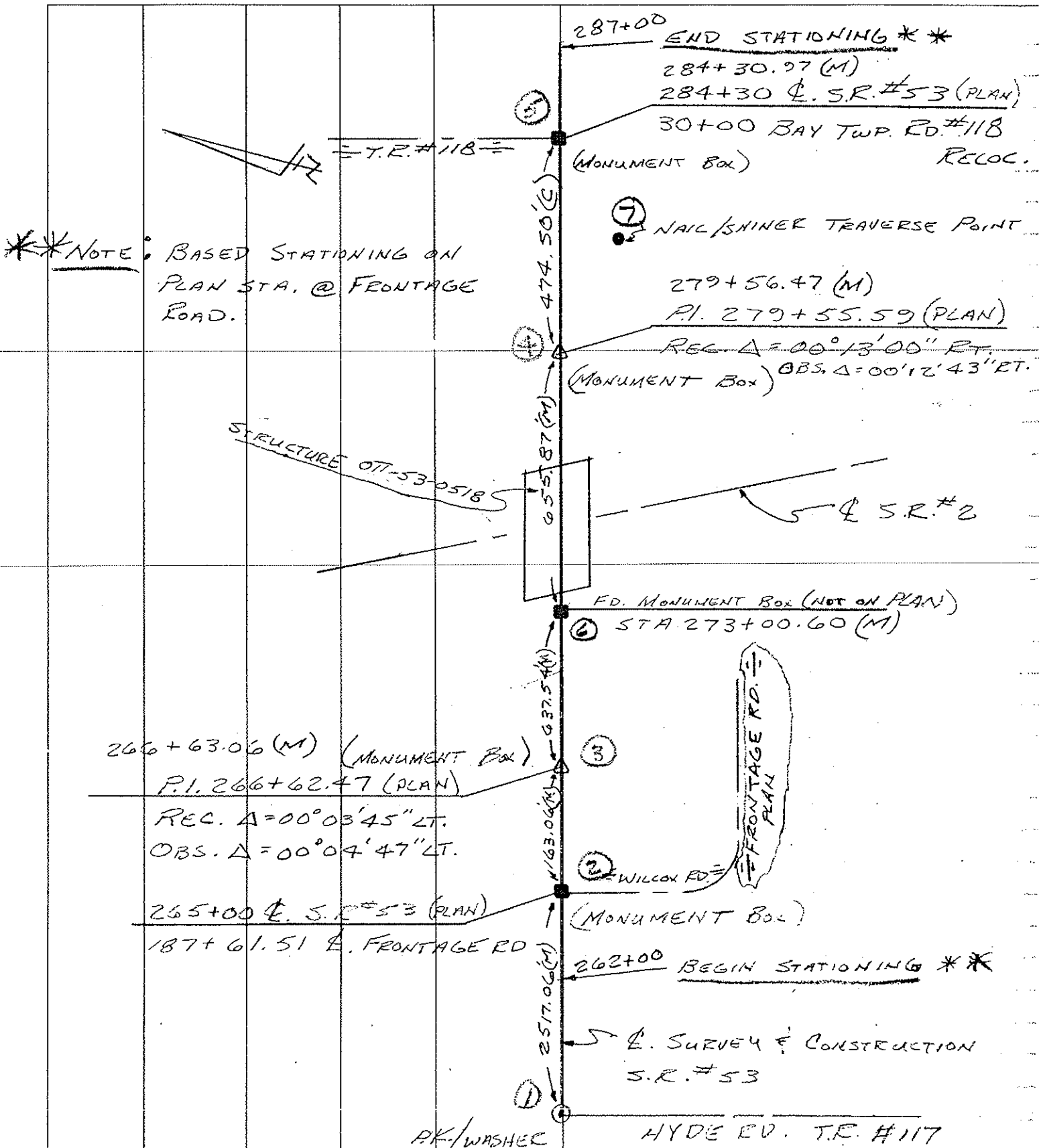


PERSONNEL	TITLE	PERSONNEL	TITLE
CHENEY	M		
PIPPLE	Ø		
BARBOUR	T		
GEYMAN	Ø		

COUNTY OTTAWA DATE 6-9-1992
 S. R. #2-53 OVERPASS WEATHER SUNNY
 SEC. 16.63 TEMP. 70°

DESCRIPTION TITLE SHEET JOB NO. 022960

LEFT CENTER LINE RIGHT



NOTE: BASED STATIONING ON PLAN STA. @ FRONTAGE ROAD.

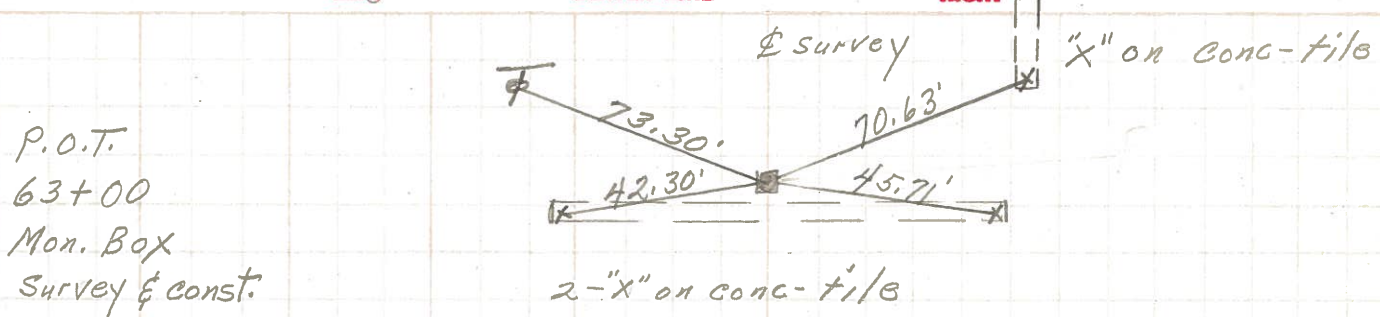
PERSONNEL	TITLE	PERSONNEL	TITLE
<u>Cronin</u>			
<u>Rippte</u>			
<u>Geyman</u>			
<u>Barbour</u>			

COUNTY Ottawa DATE 12/05/89
 S. R. # 53 WEATHER overcast
 SEC. _____ TEMP. 30°

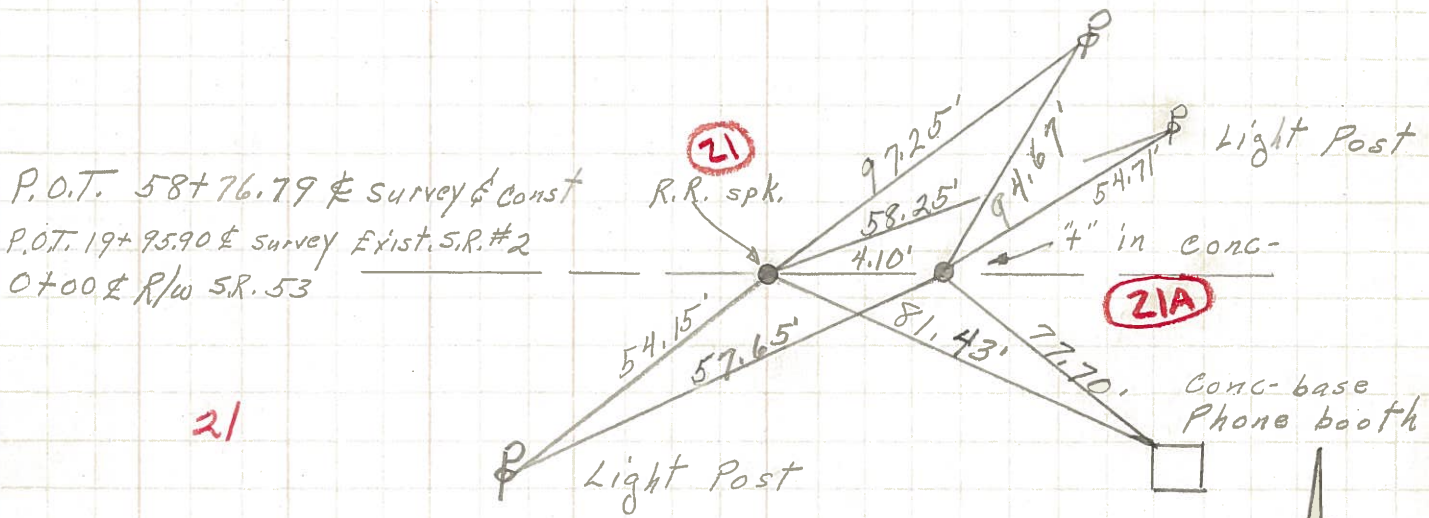
DESCRIPTION Movement Boxes JOB NO. _____
 LEFT CENTER LINE RIGHT

DESCRIPTION	LEFT	CENTER LINE	RIGHT
<p>Man. Box P.I. 27945559 From Off. 2 - 1960 Plans</p>			<p>Was not raised when pavement was resurfaced.</p>
<p>P.O.T Man Box 265400 From Off. 2 - 1960 Plans Access Rd.</p>			<p>Was not raised when pavement was resurfaced.</p>

PERSONNEL	TITLE	PERSONNEL	TITLE	COUNTY	DATE
Schneider				Ottawa	6-12-72
Mosser				S. R. 53	WEATHER Cloudy
Barbour				SEC. 11.85-12.90	TEMP. 70°
Geyman					
DESCRIPTION Portage Twp.				JOB NO.	

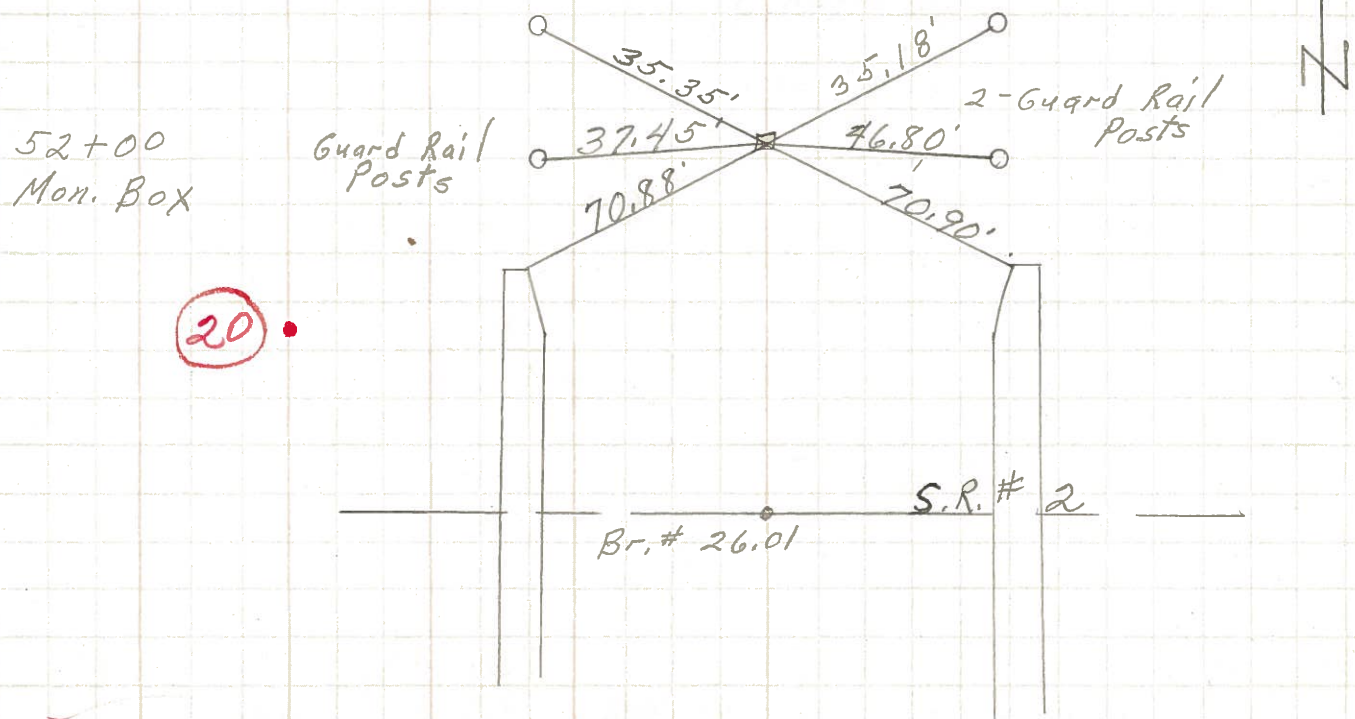


22



21

21A



20

