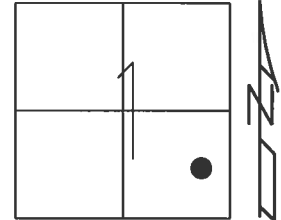


O.D.O.T. DISTRICT 2 SURVEY OFFICE (USE ONLY)

PERSONNEL \_\_\_\_\_ REFERENCE NO. 20 B SHEET 7 OF 7

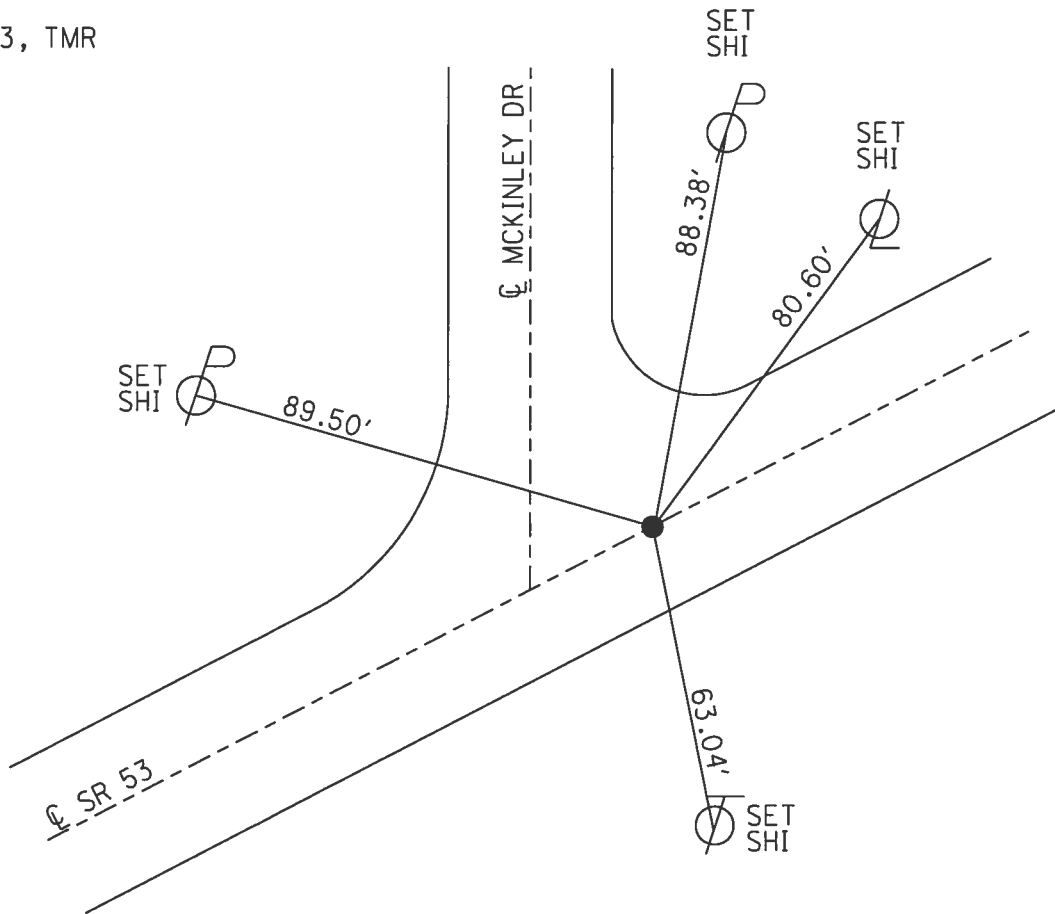
NOTES ROUSOS DATE 4/2/13 ROUTE SR 53  
 H.C. ROUSOS WEATHER CLOUDY COUNTY OTTAWA  
 R.C. LAU TEMP. 36° TOWNSHIP BAY  
 SECTION 1  
 T 6 N R 16 E

TYPE MONUMENT P.K.NAIL  
 ON SURFACE - ~~BELOW~~ ON \_\_\_\_\_  
 LEFT - ☉ PAV'T - RIGHT ON \_\_\_\_\_  
 - TO - EDGE PAVEMENT  
 S.L.M. 323+05.72



Grid: Northing: 670507.265 Easting: 1843835.572

RECORD:  
 FD P.K.NAIL  
 CP106  
 4/2/13, TMR



PERSONNEL TITLE PERSONNEL TITLE  
 Silvester \_\_\_\_\_  
 Pecopy-HIRTH \_\_\_\_\_

COUNTY Ottawa DATE 2/26/58  
4-7-66  
 S. R. #53 WEATHER \_\_\_\_\_  
 SEC. Port Clinton TEMP. \_\_\_\_\_

DESCRIPTION LEFT CENTER LINE RIGHT JOB NO.

OLD

329+47.26 iron Pin-P.K.  
 CORP. line

BRACE pole

249.3'

Shiner

34.91'

38.09'

FACE OF FIRE HYDRANT

sh. 14" Maple

CABLE Pole

344+78.80 R.R. SpK-P.K.  
 Laurel Ave.

⊙

58.40'

sh. 18" Maple ⊙

38.52

41.40

⊙

350+35.02 "X" in Conc. - P.K.

S.R. #53 E Harrison St.

ALL dists. Plumb

Black House

⊗

51.16'

37.72'

36.11'

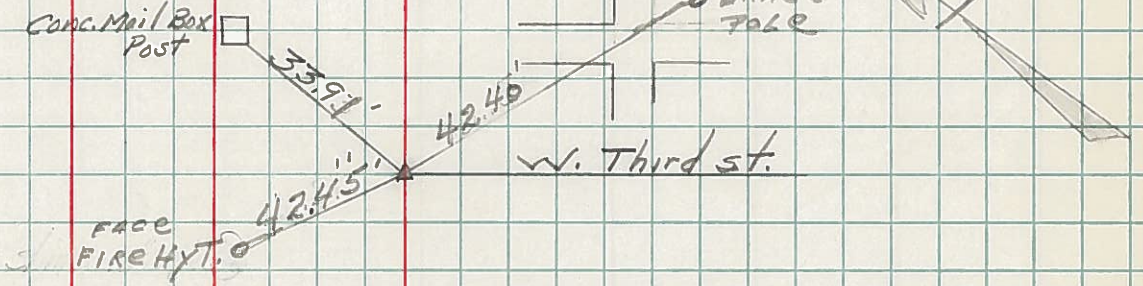
Foundation  
 Store Bldg.

PERSONNEL	TITLE	PERSONNEL	TITLE
Silvester			

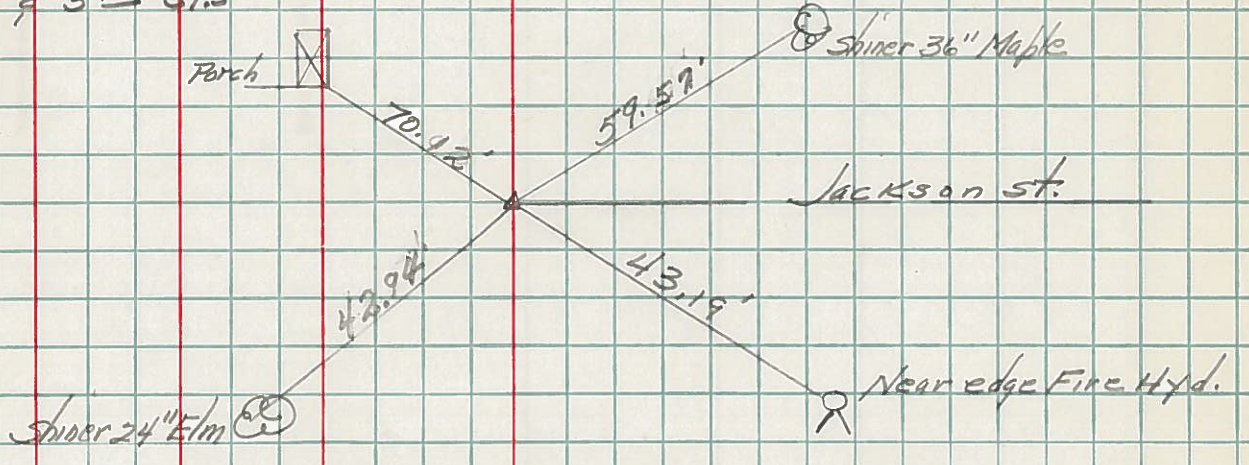
COUNTY Ottawa DATE 2/26/58  
 S. R. #53 WEATHER 4-7-66  
 SEC. Port Clinton TEMP.

DESCRIPTION \_\_\_\_\_ LEFT \_\_\_\_\_ CENTER LINE \_\_\_\_\_ RIGHT \_\_\_\_\_ JOB NO. \_\_\_\_\_

352+76.95 "X" in Brick - P.K.  
 Third & Harrison St.



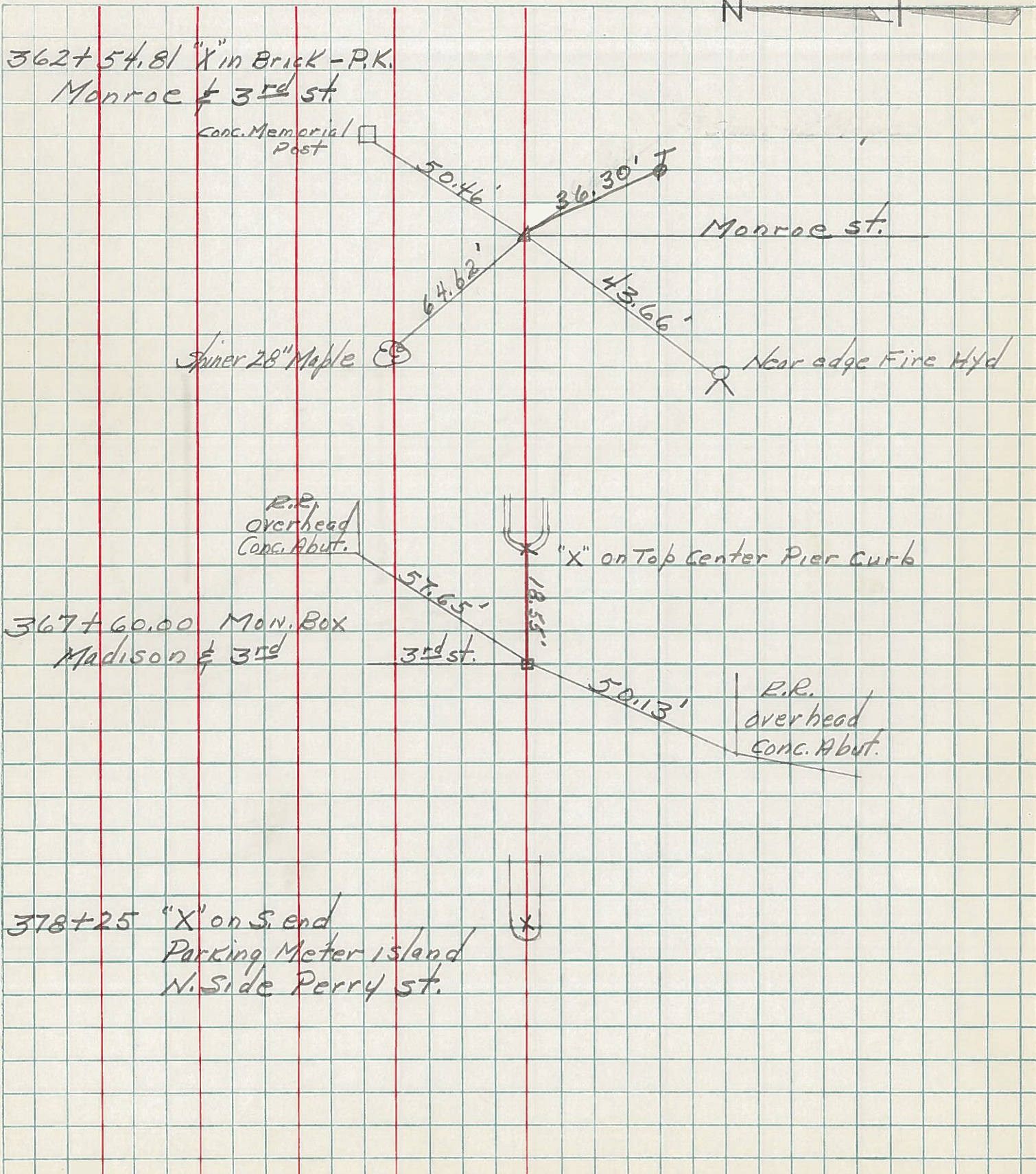
357+64.90 P.K.  
 Jackson & 3rd Sts



PERSONNEL	TITLE	PERSONNEL	TITLE
Silvester			

COUNTY Ottawa DATE 2/26/58  
 S. R. #53 WEATHER \_\_\_\_\_  
 SEC. Port Clinton TEMP. \_\_\_\_\_

DESCRIPTION \_\_\_\_\_ LEFT \_\_\_\_\_ CENTER LINE \_\_\_\_\_ RIGHT \_\_\_\_\_ JOB NO. \_\_\_\_\_



PERSONNEL TITLE PERSONNEL TITLE

Silvester  
Burnside  
Halbouth

COUNTY OT DATE 1-7-57

S. R. 53 WEATHER cloudy

SEC. \_\_\_\_\_ TEMP. 30°

DESCRIPTION Port Clinton LEFT CENTER LINE RIGHT JOB NO. \_\_\_\_\_

