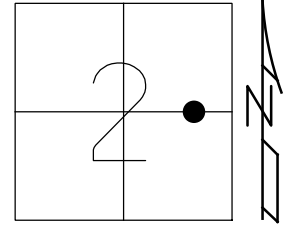


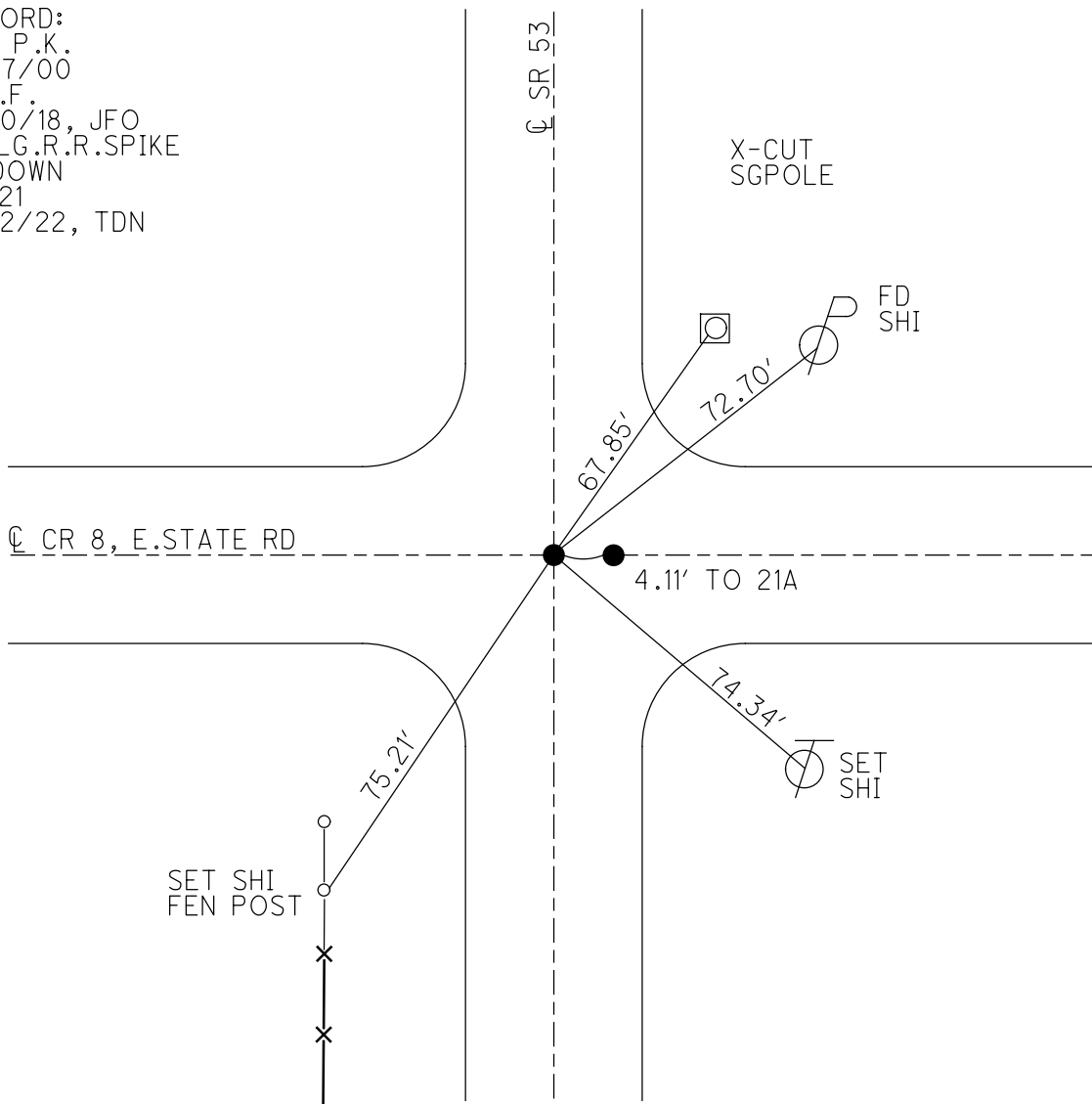
O.D.O.T. DISTRICT 2 SURVEY OFFICE (USE ONLY)

PERSONNEL \_\_\_\_\_ REFERENCE NO. 21 SHEET 2 OF 12  
 NOTES RHOADES DATE 8/22/22 ROUTE SR 53  
 H.C. NIESE WEATHER CLOUDY COUNTY OTTAWA  
 R.C. AUBLE TEMP. 71° TOWNSHIP PORTAGE  
 \_\_\_\_\_ SECTION 2  
 \_\_\_\_\_ T 6 N R 17 E

TYPE MONUMENT LG.R.R.SPIKE, INDENTED  
 ON SURFACE - ~~BELOW~~ 2"  
 LEFT - ☉ PAV'T - RIGHT ON  
- TO - EDGE PAVEMENT  
 S.L.M. 624+99.8  
 GRID: NORTHING: 671151.633 EASTING: 1870039.177



RECORD:  
 SET P.K.  
 11/27/00  
 D.N.F.  
 9/20/18, JFO  
 FD LG.R.R.SPIKE  
 2" DOWN  
 REF21  
 8/22/22, TDN



# O.D.O.T. DISTRICT 2 SURVEY OFFICE

PERSONNEL

REFERENCE NO. 21

SHEET 1 OF 8

NOTES Van Dusen

H.C. Rousos

DATE 8-9-00

ROUTE SR 53

R.C. Brown

WEATHER Cloudy

COUNTY OTTAWA

TEMP. 75°

TOWNSHIP PORTAGE

SECTION 2

T. 6 N R. 17 E

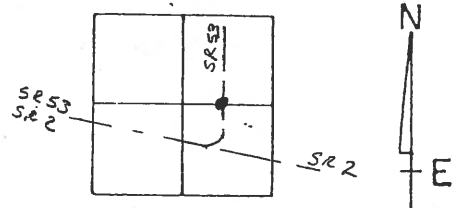
TYPE MONUMENT R.R. Spike & "X" in Conc.

ON SURFACE - BELOW Yes

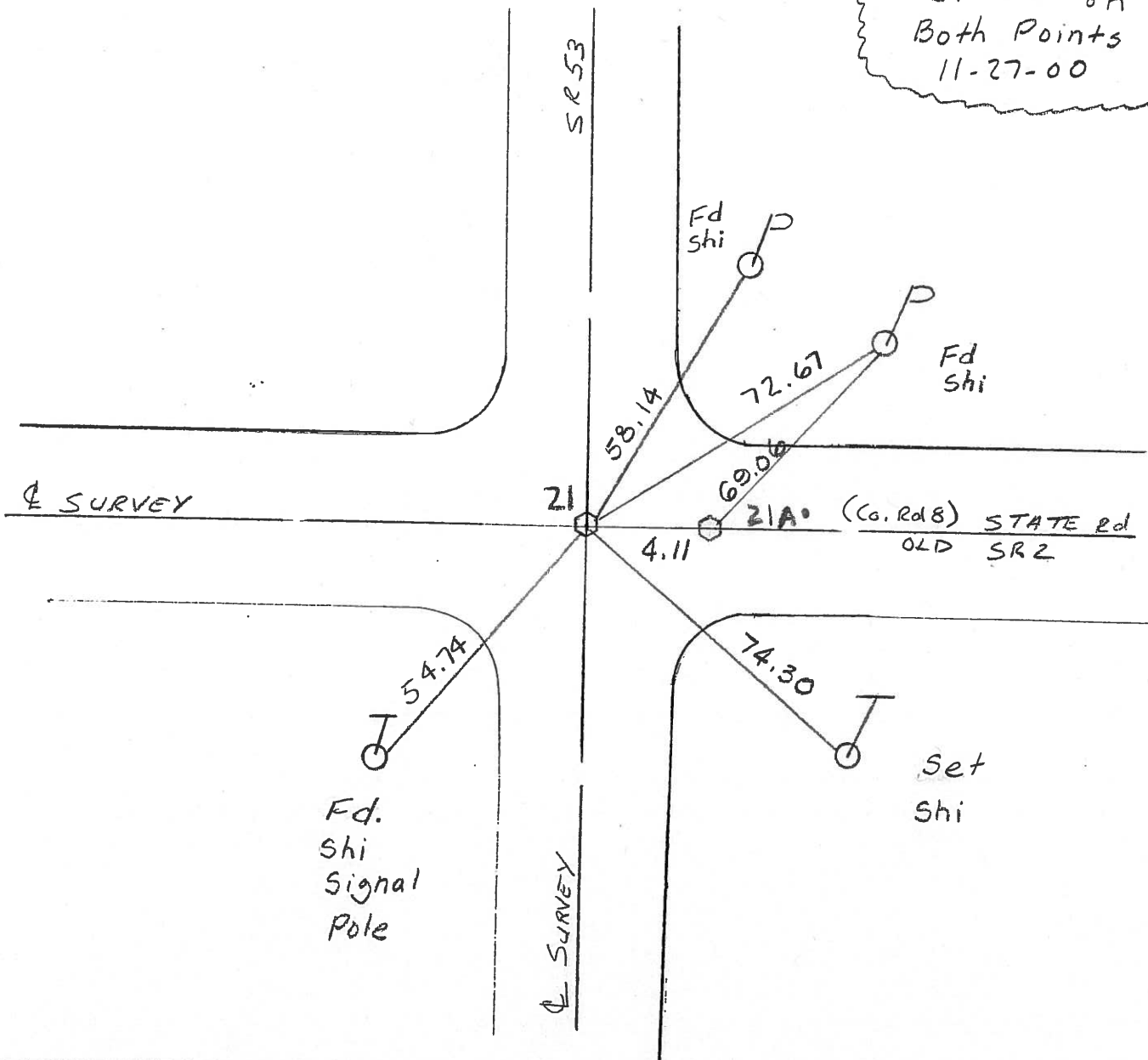
~~LEFT~~ - ~~PAV'T.~~ - ~~RIGHT~~ Yes

TO EDGE PAVEMENT

S.L.M. 624 + 38.19



Set PK on Both Points  
11-27-00



Resurfaced 2000

# O.D.O.T. DISTRICT 2 SURVEY OFFICE

PERSONNEL

REFERENCE NO. 21

SHEET 2 OF 5

NOTES HOFFMAN

H.C. BARNHISEL

DATE 10-30-89

ROUTE SR 53

R.C. \_\_\_\_\_

WEATHER CLEAR

COUNTY OTTAWA

TEMP. 79°

TOWNSHIP PORTAGE

SECTION 2

T6N R17E

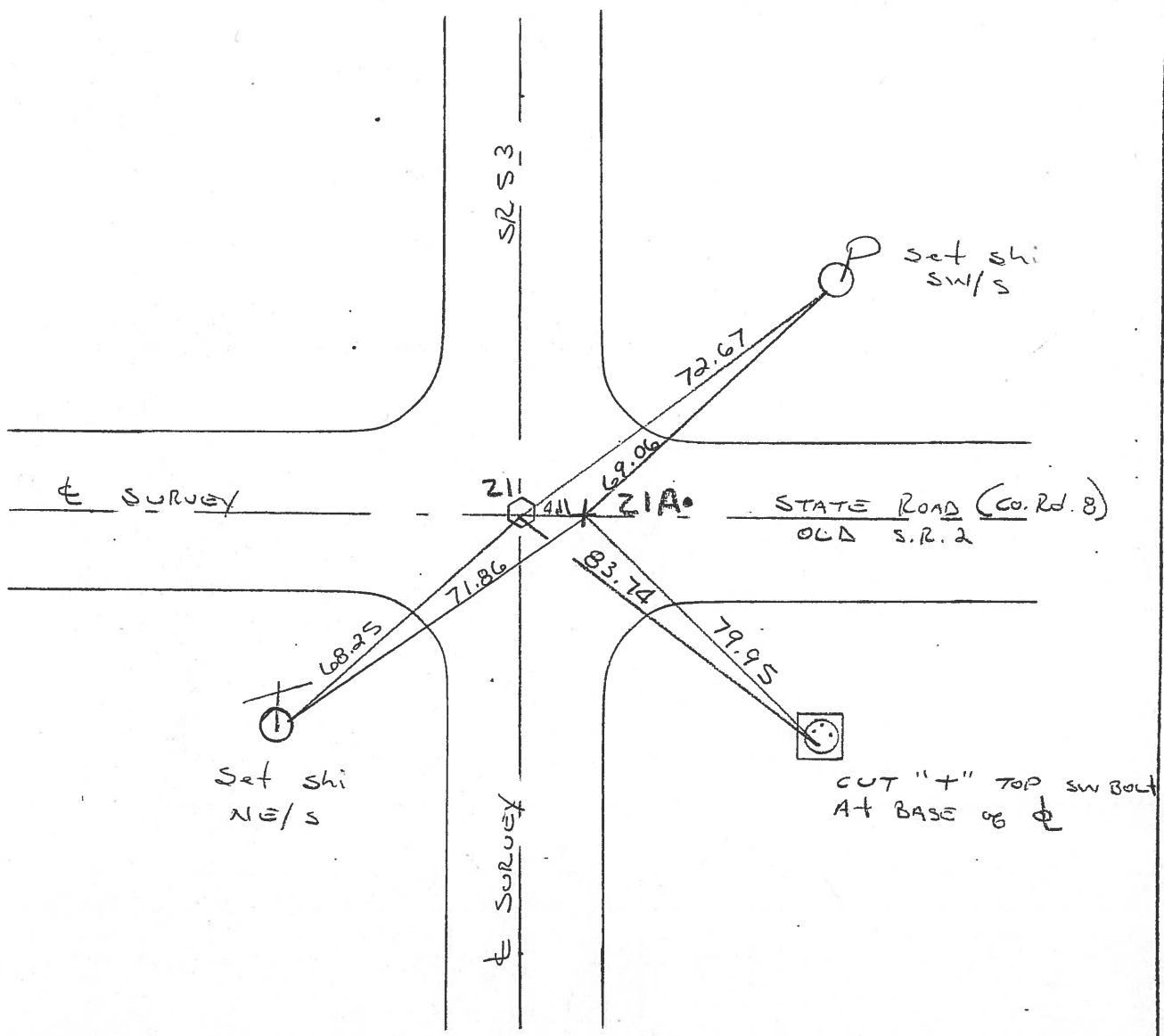
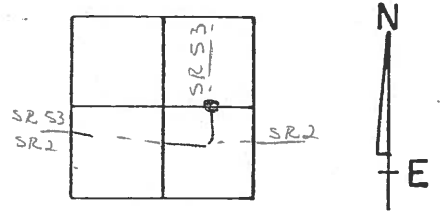
TYPE MONUMENT R.R. SPIKE & "T" IN CONC.

ON SURFACE - BELOW YES

LEFT- & PAV'T. - RIGHT YES

TO \_\_\_\_\_ EDGE PAVEMENT

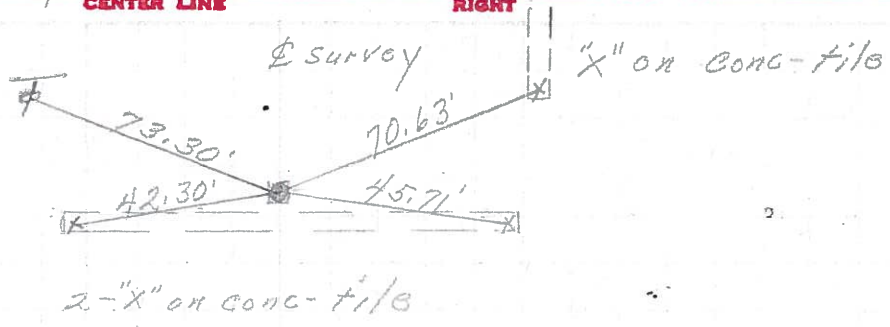
S.L.M. 624 + 38.19



PERSONNEL	TITLE	PERSONNEL	TITLE	COUNTY	DATE
Schneider				Ottawa	6-12-72
Mosser				S. R. 53	WEATHER Cloudy
Barbour				SEC. 11.85-12.90	TEMP. 70°
Geyman					
DESCRIPTION <u>Portage Twp.</u>				JOB NO.	

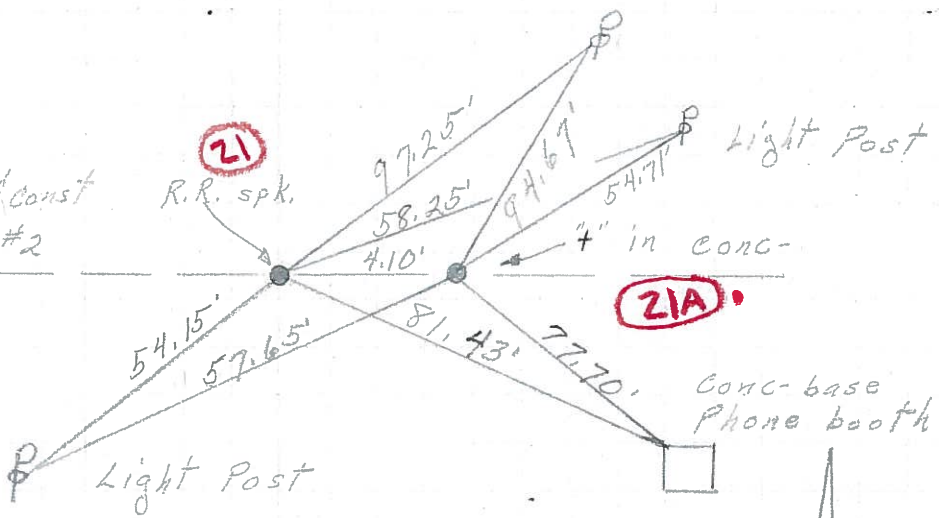
P.O.T.  
63+00  
Mon. Box  
Survey & Const.

**22**



P.O.T. 58+76.79 & Survey & Const  
P.O.T. 19+95.90 & Survey Exist. S.R.#2  
0+00 & R/W S.R. 53

**21**



52+00  
Mon. Box

**20**

