

O.D.O.T. DISTRICT 2 SURVEY OFFICE (USE ONLY)

PERSONNEL	REFERENCE NO.	21 A	SHEET	3	OF	12
NOTES	RHOADES	DATE	8/22/22	ROUTE	SR 53	
H.C.	NIESE	WEATHER	CLOUDY	COUNTY	OTTAWA	
R.C.	AUBLE	TEMP.	71°	TOWNSHIP	PORTAGE	
				SECTION	2	
				T	6	N
				R	17	E

TYPE MONUMENT "+" IN CONCRETE, D.N.F.

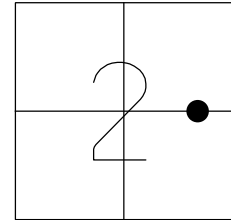
ON SURFACE - ~~BELOW~~ ON _____

LEFT - ☉ PAV'T - RIGHT _____

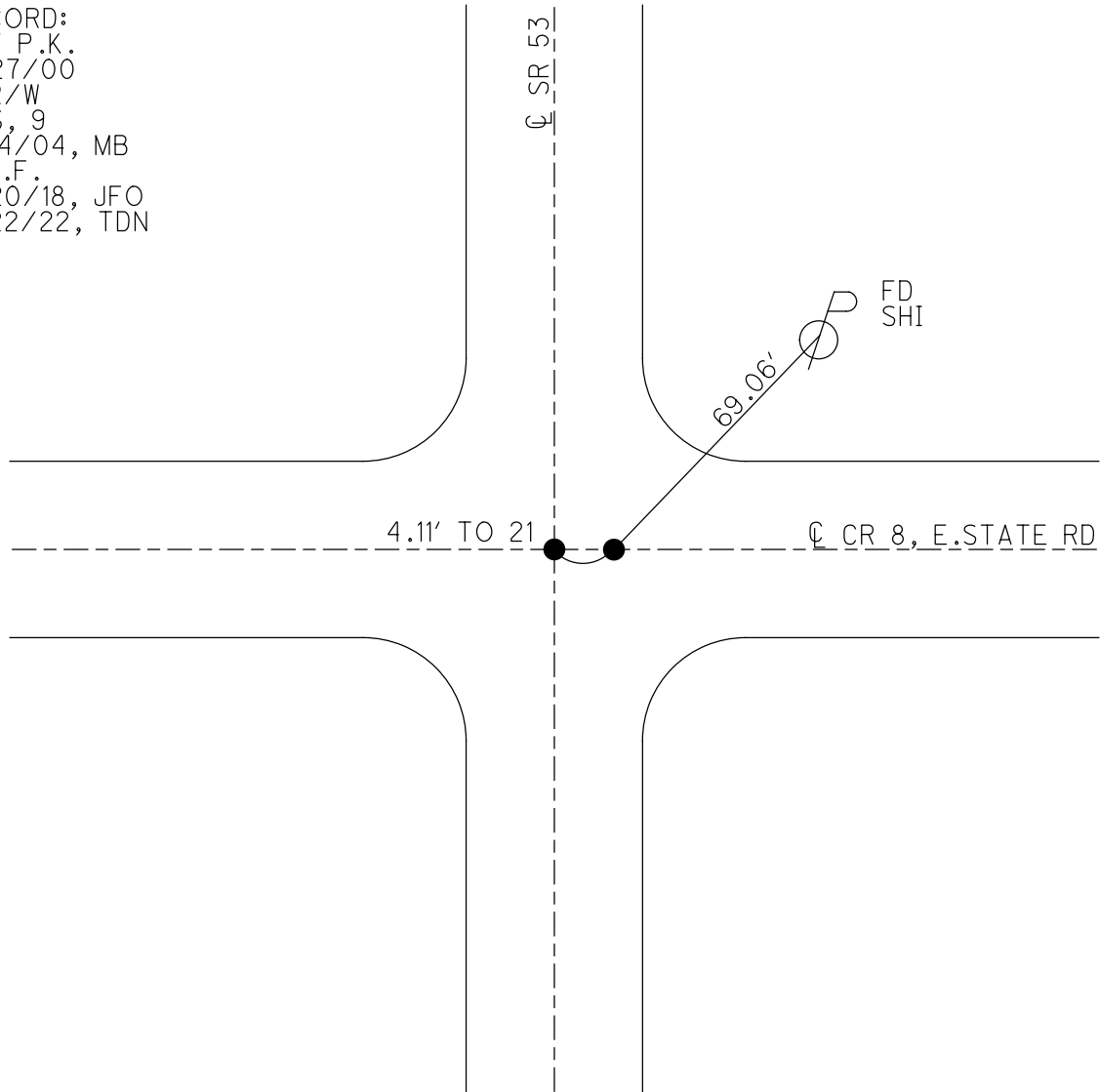
_____ TO _____ EDGE PAVEMENT

S.L.M. 642+62.40

GRID: NORTHING: 671221.45 EASTING: 1870237.75



RECORD:
 SET P.K.
 11/27/00
 ☉ R/W
 GPS, 9
 6/14/04, MB
 D.N.F.
 9/20/18, JFO
 8/22/22, TDN

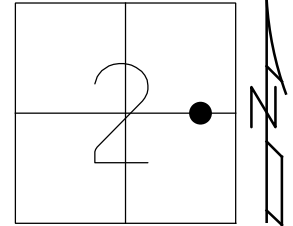


O.D.O.T. DISTRICT 2 SURVEY OFFICE (USE ONLY)

PERSONNEL _____ REFERENCE NO. 21 A SHEET 2 OF 11

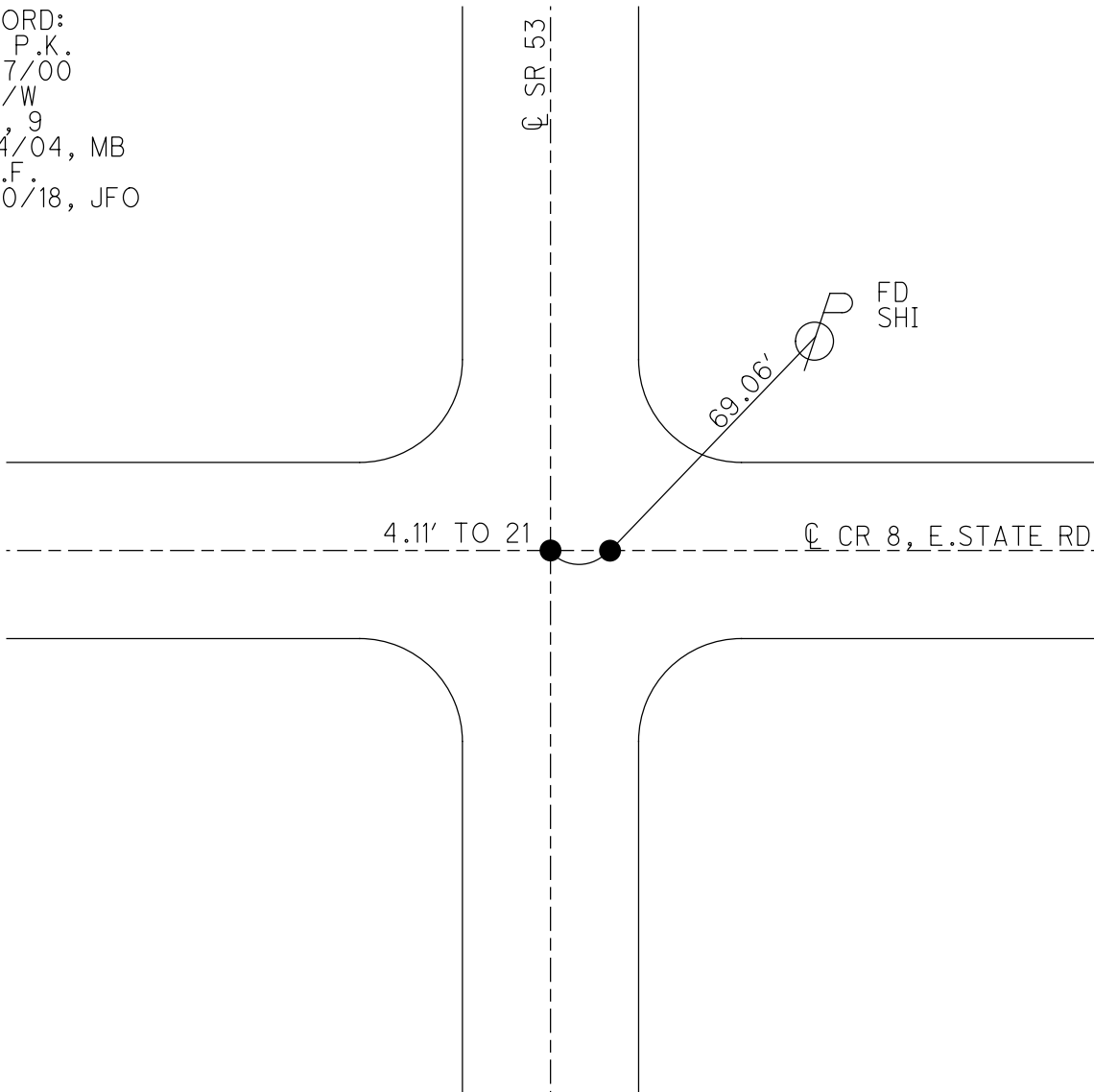
NOTES VAN DUSEN DATE 8/9/00 ROUTE SR 53
 H.C. ROUSOS WEATHER CLOUDY COUNTY OTTAWA
 R.C. BROWN TEMP. 75° TOWNSHIP PORTAGE
 _____ SECTION 2
 _____ T 6 N R 17 E

TYPE MONUMENT "+" IN CONCRETE
 ON SURFACE - ~~BELOW~~ ON _____
 LEFT - ☉ PAV'T - RIGHT _____
 _____ TO _____ EDGE PAVEMENT
 S.L.M. 642+62.40



GRID: NORTHING: 671221.45 EASTING: 1870237.75

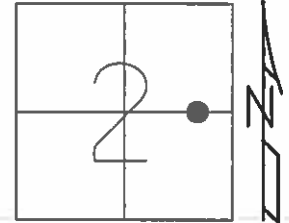
RECORD:
 SET P.K.
 11/27/00
 ☉ R/W
 GPS, 9
 6/14/04, MB
 D.N.F.
 9/20/18, JFO



O.D.O.T. DISTRICT 2 SURVEY OFFICE (USE ONLY)

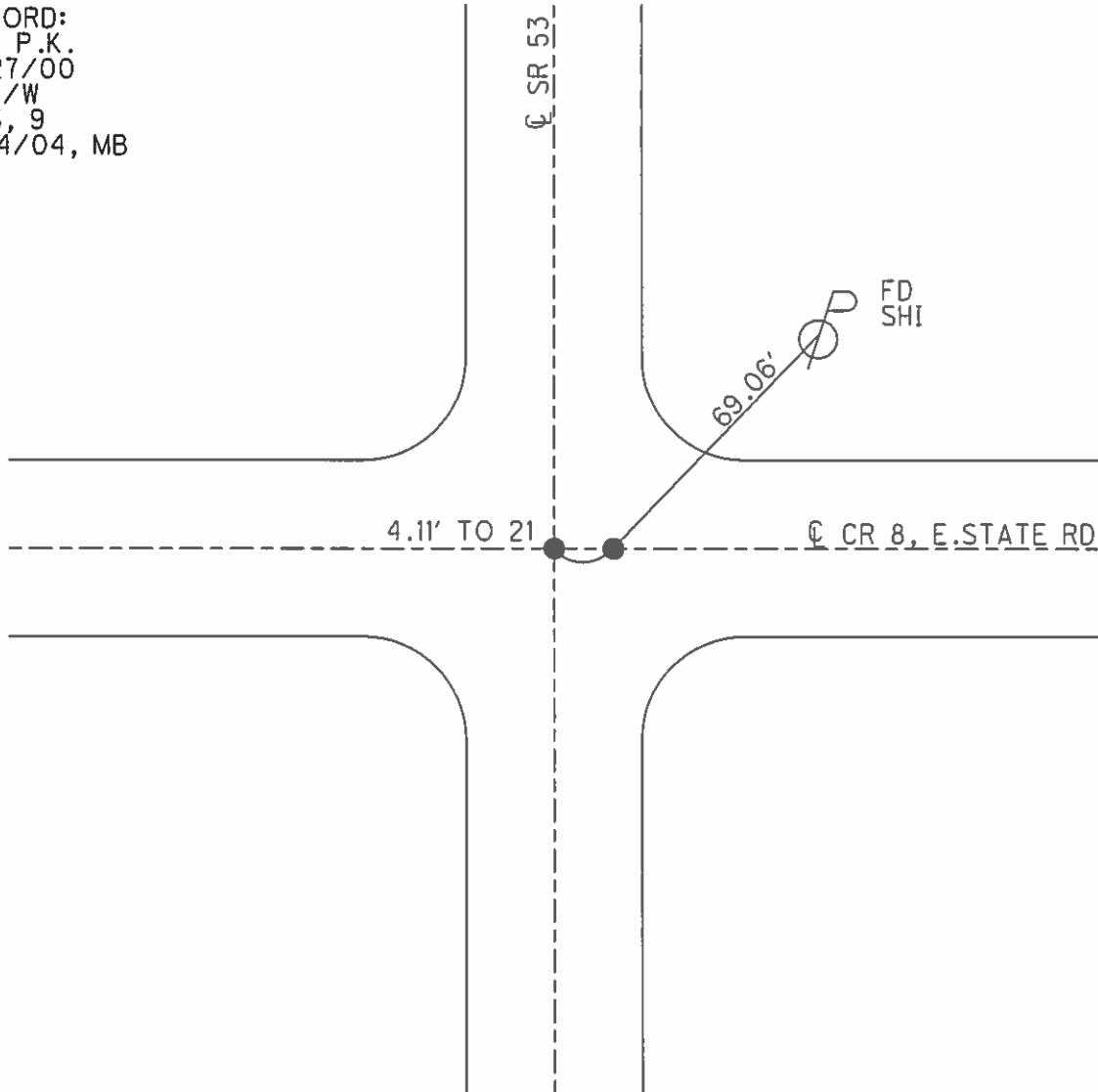
PERSONNEL _____ REFERENCE NO. 21 A SHEET 2 OF 11
NOTES VAN DUSEN DATE 8/9/00 ROUTE SR 53
H.C. ROUSOS WEATHER CLOUDY COUNTY OTTAWA
R.C. BROWN TEMP. 75° TOWNSHIP PORTAGE
SECTION 2
T 6 N R 17 E

TYPE MONUMENT "+" IN CONCRETE
ON SURFACE - ~~BELOW~~ ON _____
LEFT - ☉ PAV'T - RIGHT _____
- TO - EDGE PAVEMENT
S.L.M. 642+62.40



GRID: NORTHING: 671221.45 EASTING: 1870237.75

RECORD:
SET P.K.
11/27/00
☉ R/W
GPS, 9
6/14/04, MB



O.D.O.T. DISTRICT 2 SURVEY OFFICE

PERSONNEL

REFERENCE NO. 21

SHEET 1 OF 8

NOTES Van Dusen

H.C. Rousos

DATE 8-9-00

ROUTE SR 53

R.C. Brown

WEATHER Cloudy

COUNTY OTTAWA

TEMP. 75°

TOWNSHIP PORTAGE

SECTION 2

T. 6 N R. 17 E

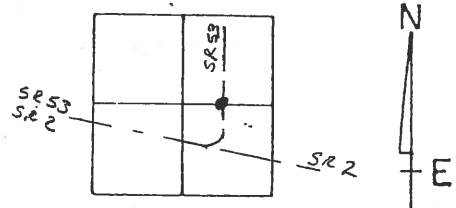
TYPE MONUMENT R.R. Spike & "X" in Conc.

ON SURFACE - ~~BELOW~~ Yes

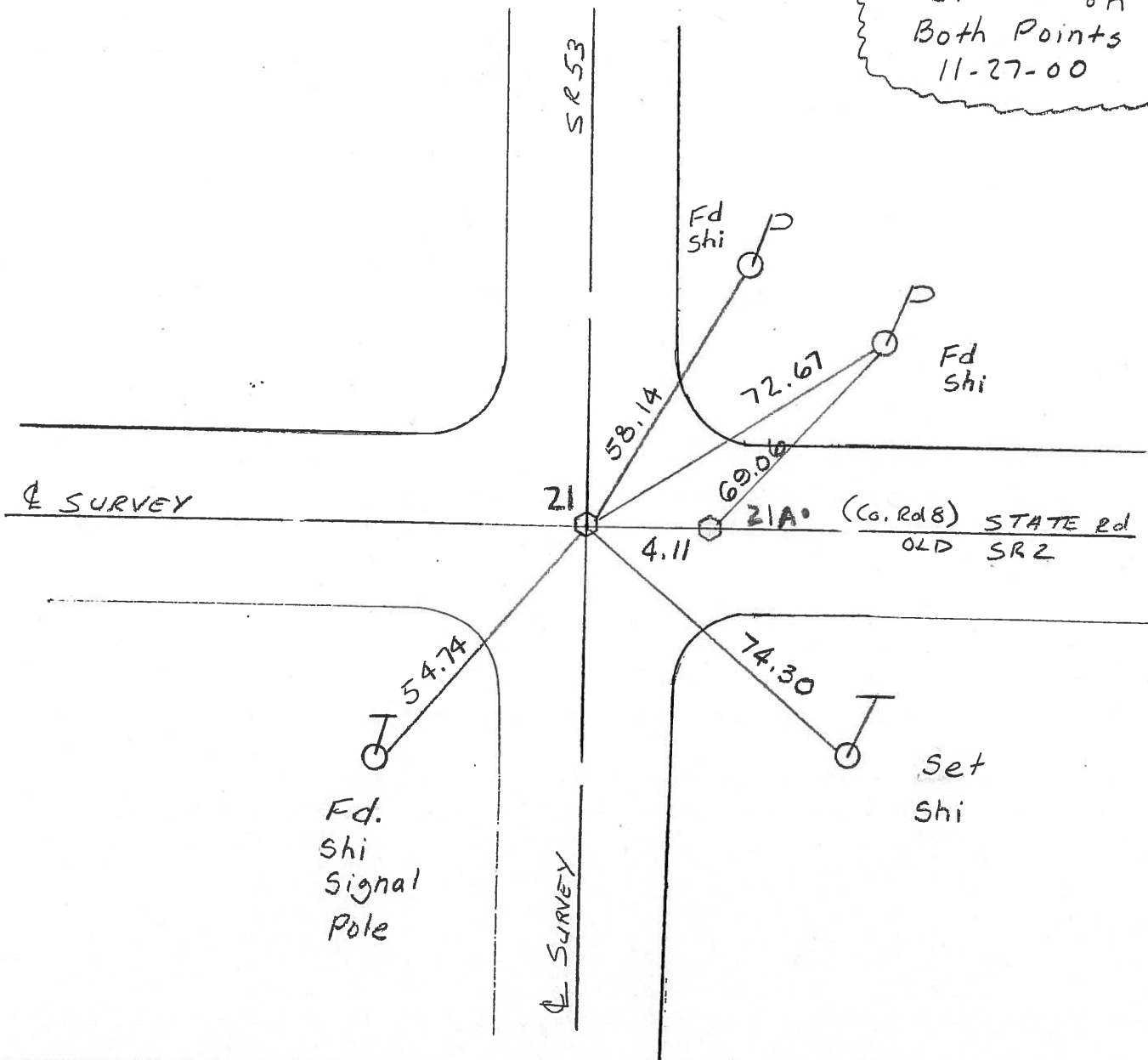
~~LEFT - & PAV'T. - RIGHT~~ Yes

~~TO~~ EDGE PAVEMENT

S.L.M. 624 + 38.19



Set PK on Both Points
11-27-00



Resurfaced 2000

O.D.O.T. DISTRICT 2 SURVEY OFFICE

PERSONNEL

REFERENCE NO. 21

SHEET 2 OF 5

NOTES HOFFMAN

H.C. BARNHISEL

DATE 10-30-89

ROUTE SR 53

R.C. _____

WEATHER CLEAR

COUNTY OTTAWA

TEMP. 79°

TOWNSHIP PORTAGE

SECTION 2

T6NR17E

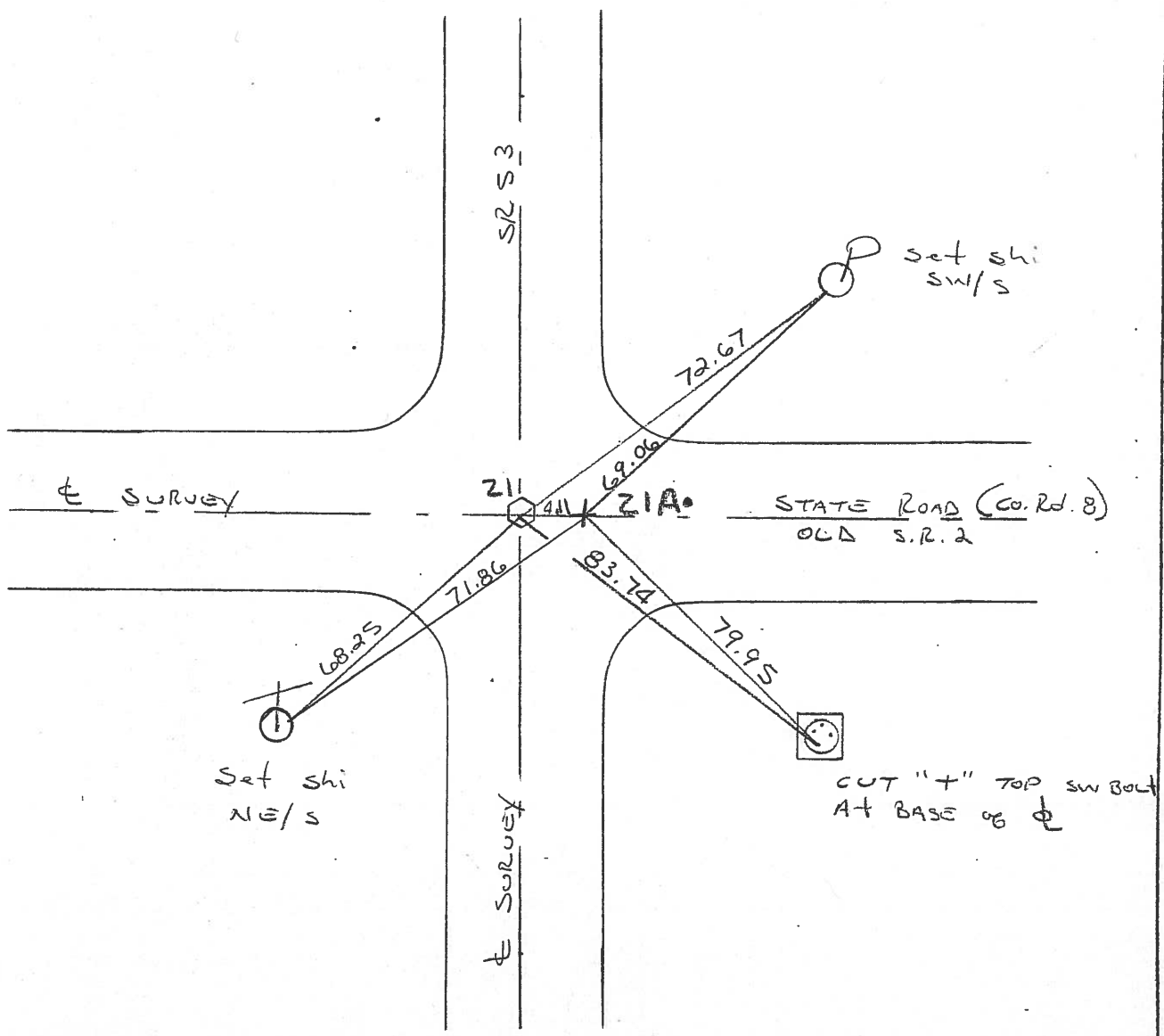
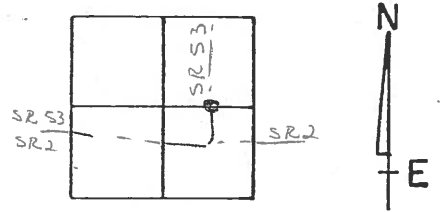
TYPE MONUMENT R.R. SPIKE & "T" IN CONC.

ON SURFACE - BELOW YES

LEFT - & PAV'T. - RIGHT YES

TO _____ EDGE PAVEMENT

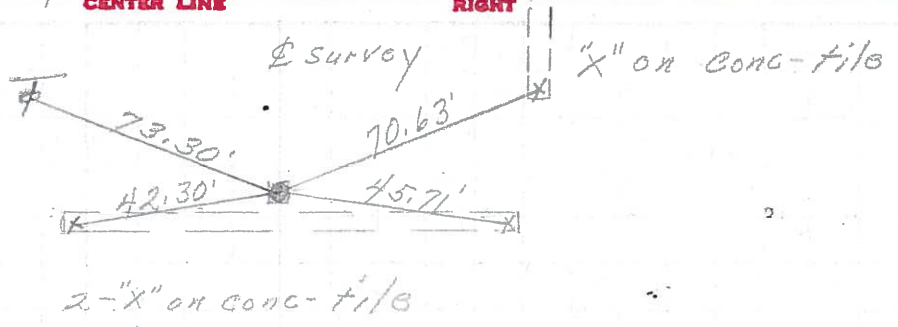
S.L.M. 624 + 38.19



PERSONNEL	TITLE	PERSONNEL	TITLE	COUNTY	DATE
Schneider				Ottawa	6-12-72
Mosser				S. R. 53	WEATHER Cloudy
Barbour				SEC. 11.85-12.90	TEMP. 70°
Geyman					
DESCRIPTION <u>Portage Twp.</u>				JOB NO.	

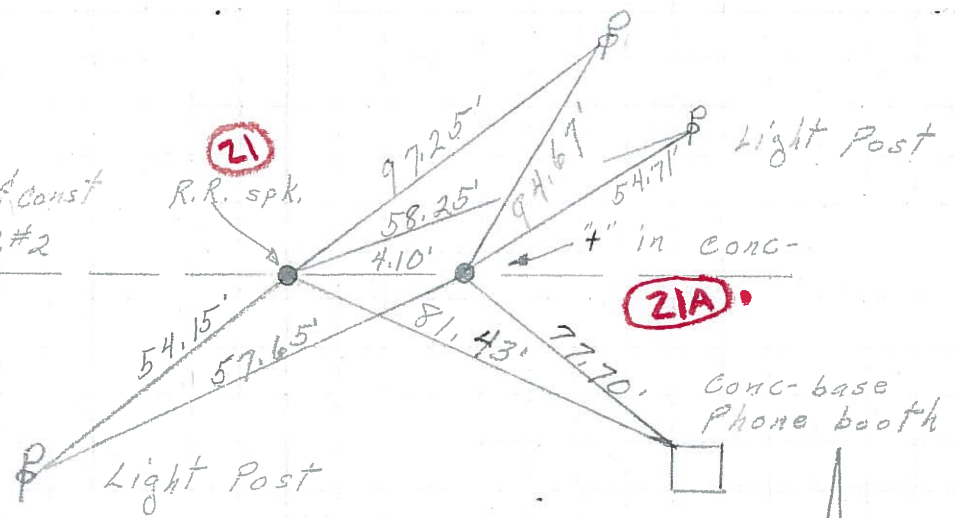
P.O.T.
63+00
Mon. Box
Survey & Const.

22



P.O.T. 58+76.79 & Survey & Const
P.O.T. 19+95.90 & Survey Exist. S.R.#2
0+00 & R/W S.R. 53

21



52+00
Mon. Box

20

