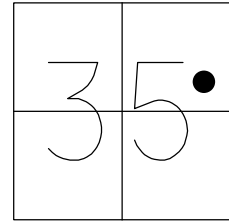


O.D.O.T. DISTRICT 2 SURVEY OFFICE (USE ONLY)

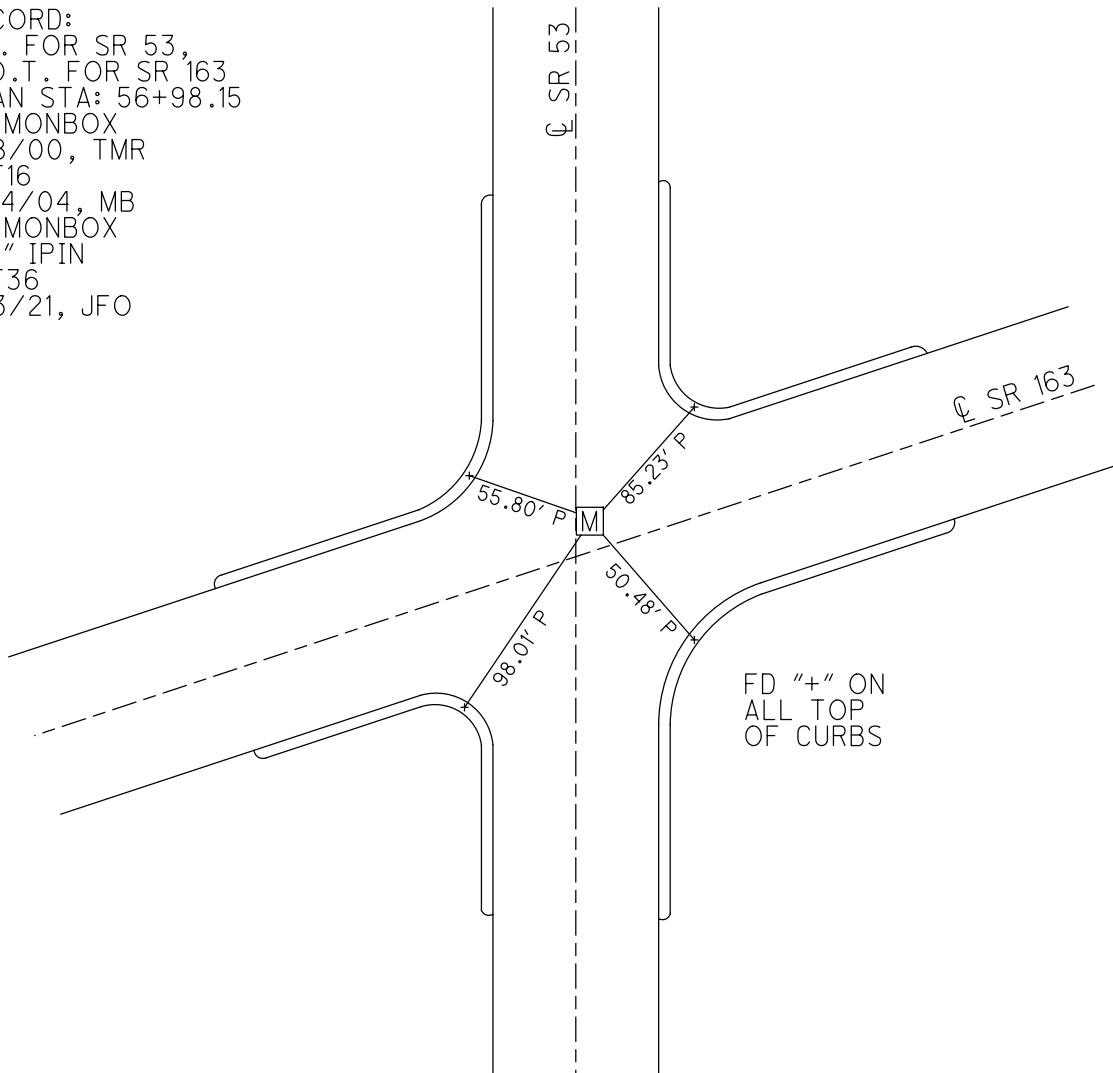
PERSONNEL _____ REFERENCE NO. 36 SHEET 10 OF 12
 NOTES RHOADES DATE 8/22/22 ROUTE SR 53
 H.C. NIESE WEATHER CLOUDY COUNTY OTTAWA
 R.C. AUBLE TEMP. 72° TOWNSHIP PORTAGE
 DWG BY RHOADES PID 102905 SECTION 35
 T 7 N R 17 E

TYPE MONUMENT MONBOX W/1" IPIN
 ON SURFACE - ~~BELOW~~ ON
 OFFSET \odot PAVEMENT 0.7' \pm : RT
- TO - EDGE PAVEMENT
 STATION: 681+96.06



HORZ.DATUM: NAD83 2011 GEOID: NAVD88 2018
 GRID: NORTHING: 676841.877 EASTING: 1870280.353

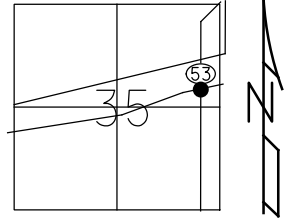
RECORD:
 P.I. FOR SR 53,
 P.O.T. FOR SR 163
 PLAN STA: 56+98.15
 FD MONBOX
 9/8/00, TMR
 REF16
 6/14/04, MB
 FD MONBOX
 W/1" IPIN
 REF36
 3/3/21, JFO



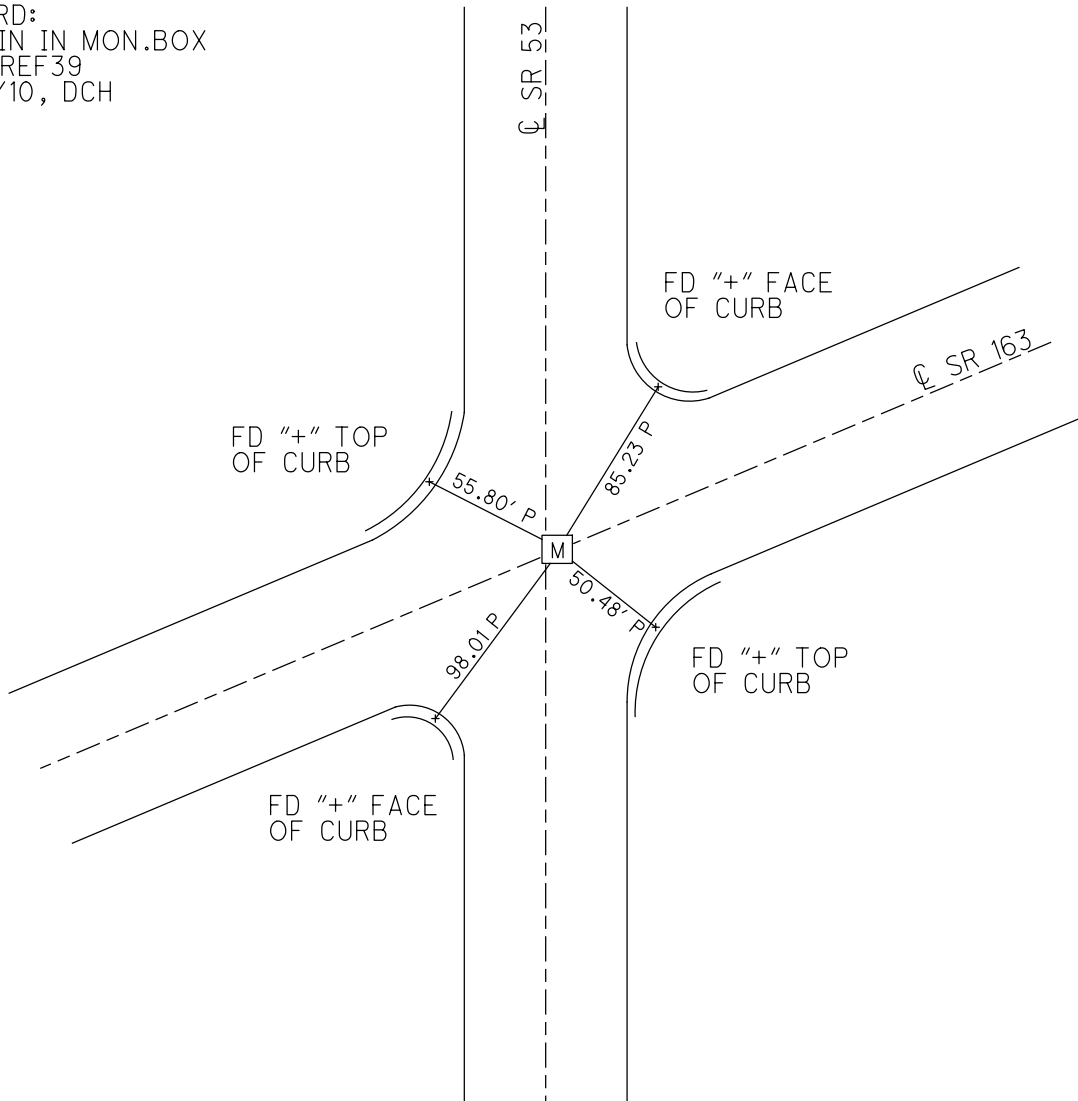
O.D.O.T. DISTRICT 2 SURVEY OFFICE (USE ONLY)

PERSONNEL _____ REFERENCE NO. 36 SHEET 1 OF 36
NOTES VAN DUSEN DATE 9/8/00 ROUTE SR 53
H.C. ROUSOS WEATHER CLOUDY COUNTY OTTAWA
R.C. BROWN TEMP. 72° TOWNSHIP PORTAGE
SECTION 35
T 7 N R 17 E

TYPE MONUMENT IPIN IN MON.BOX
ON SURFACE - ~~BELOW~~ ON _____
~~LEFT~~ - Q PAV'T - RIGHT 0.7'
- TO - EDGE PAVEMENT
S.L.M. 682+17.6
GRID: NORTHING: 676841.856 EASTING: 1870280.230



RECORD:
FD IPIN IN MON.BOX
GPS, REF39
5/26/10, DCH



O.D.O.T. DISTRICT 2 SURVEY OFFICE

PERSONNEL

REFERENCE NO. 36

SHEET 8 OF 8

NOTES Van Dusen

H.C. Rousos

R.C. Brown

DATE 9-8-00

WEATHER Cloudy

TEMP. 72°

ROUTE SR 53

COUNTY OTTAWA

TOWNSHIP PORTAGE

SECTION 35

T. 7 N. R. 17 E

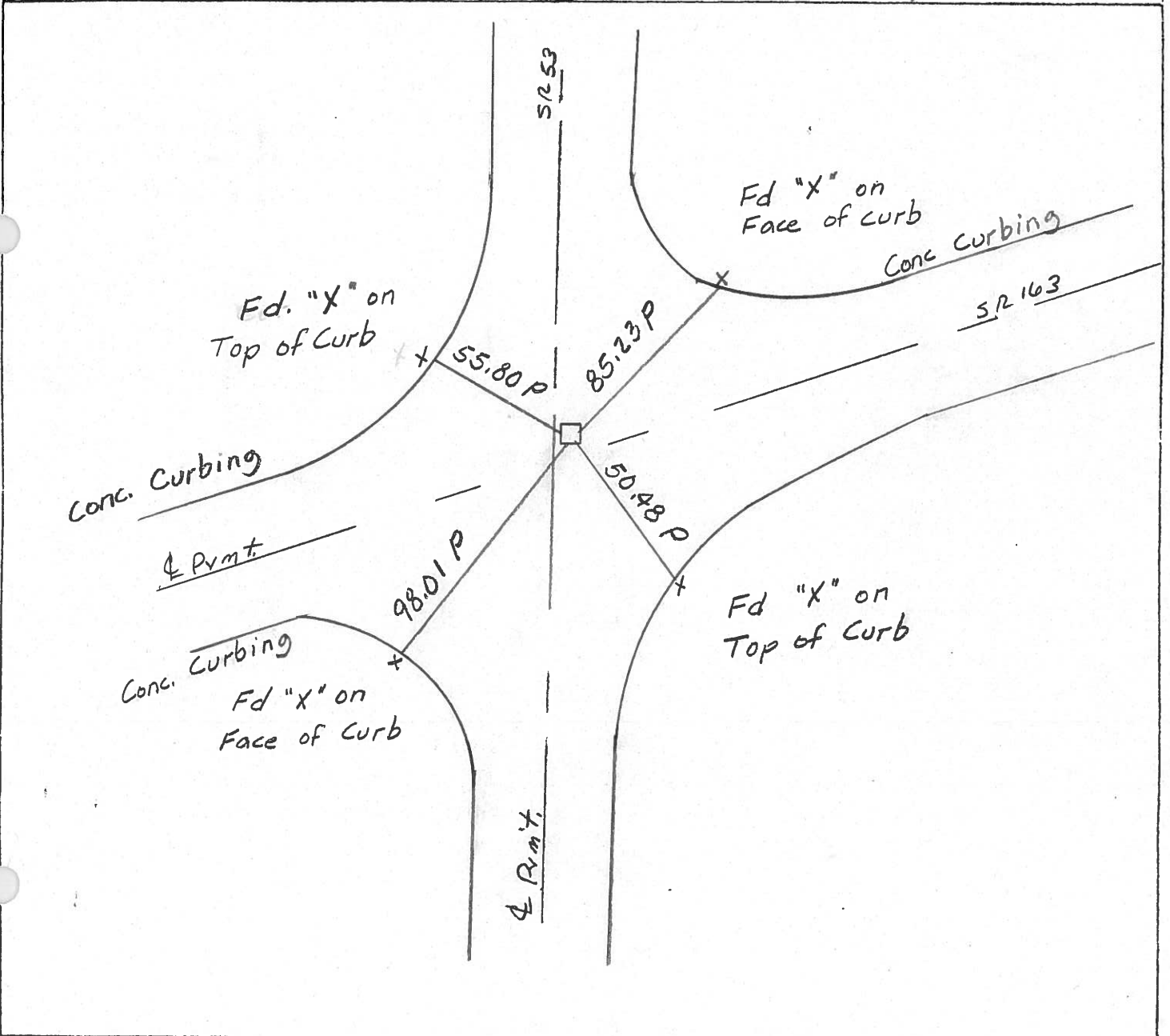
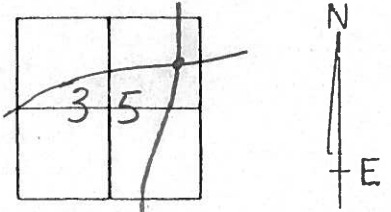
TYPE MONUMENT Iron Pin in Monument Box

ON SURFACE - BELOW Yes

LEFT - & PAW'T. - RIGHT 0.7

TO - EDGE PAVEMENT

S.L.M. 681+34.65



O.D.O.T. DISTRICT 2 SURVEY OFFICE

PERSONNEL _____

REFERENCE NO. 36

SHEET _____ OF _____

NOTES BAENHISEL

H.C. _____

DATE 9-14-90

ROUTE SR 53

R.C. BARBOUR

WEATHER cloudy

COUNTY OTTAWA

Ripple

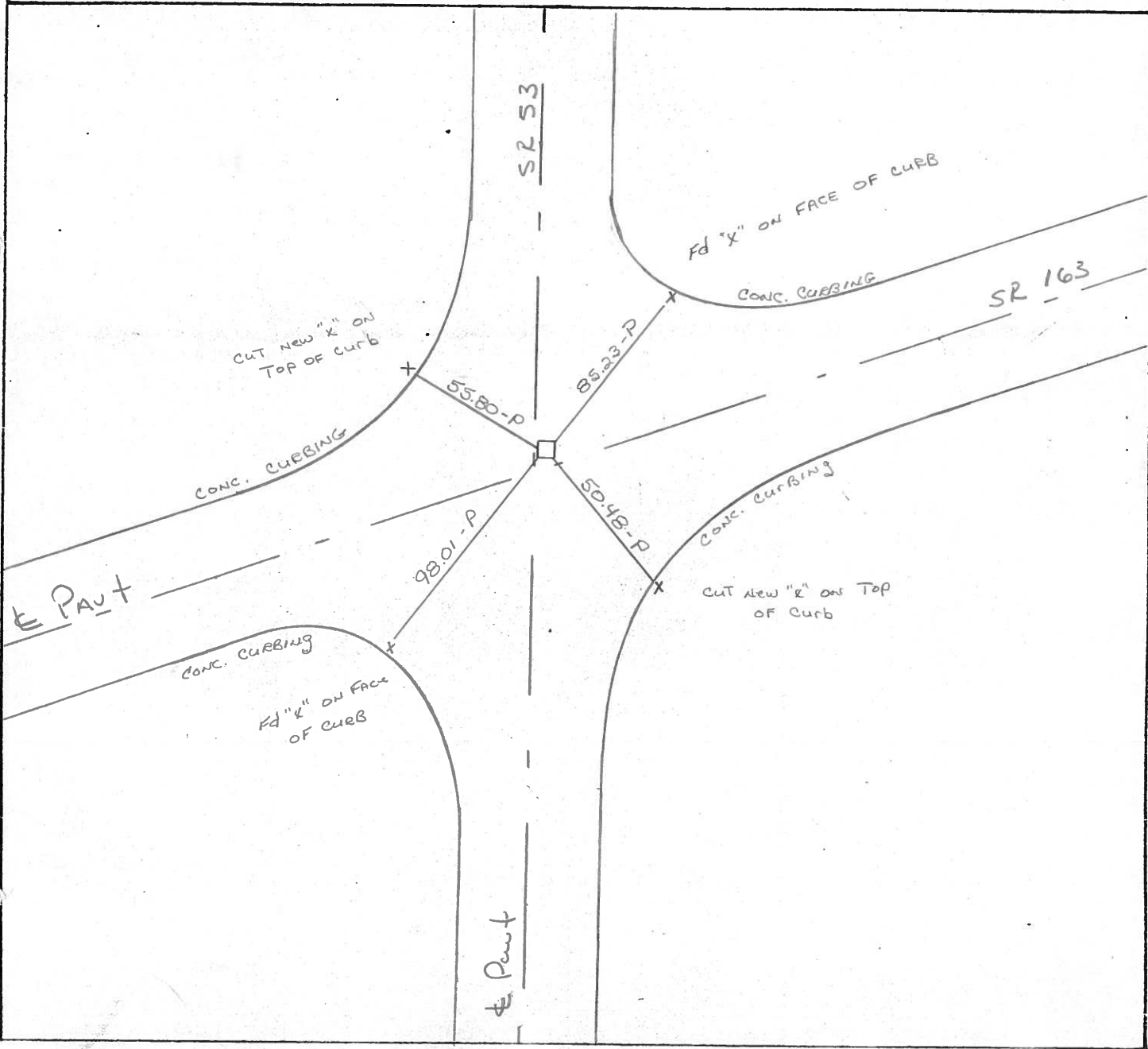
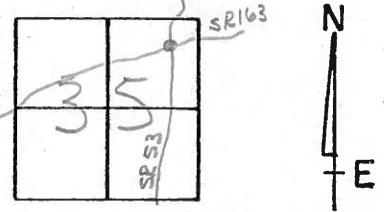
TEMP. +76°

TOWNSHIP PORTAGE

SECTION 35

T 7 N R 17 E

TYPE MONUMENT I.P. IN MON. BOX
 ON SURFACE - BELOW Box at surface, I.P. is 0.9 BLOW
 LEFT - & PAV'T. - RIGHT 0.7
 - TO - EDGE PAVEMENT
 S.L.M. 681+34.65 1.5 N. OF & S.E. 163



Resurveyed 1996

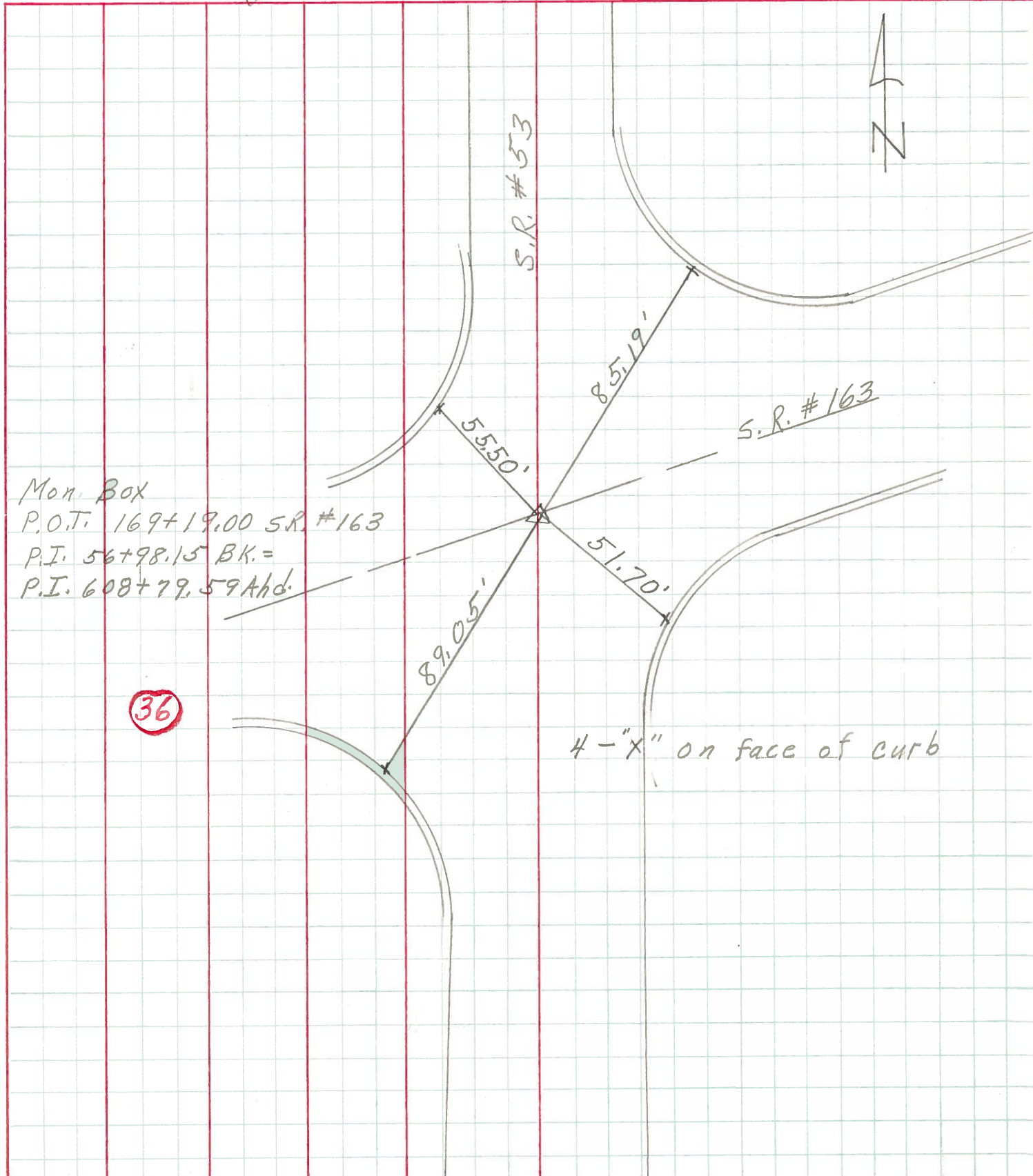
PERSONNEL TITLE PERSONNEL TITLE

COUNTY Ottawa DATE 6-19-72

S. R. 53 WEATHER Fair

SEC. 11.85-12.90 TEMP. 75°

DESCRIPTION Portage Twp LEFT CENTER LINE RIGHT JOB NO.



Mon. Box
 P.O.T. 169+19.00 S.R. #163
 P.I. 56+98.15 BK.=
 P.I. 608+79.59 Ahd.

36

4-x" on face of curb

PERSONNEL	TITLE	PERSONNEL	TITLE	COUNTY	<u>Ottawa</u>	DATE	<u>8-1-68</u>
<u>Schneider</u>		<u>Potts</u>		S. R.	<u>53</u>	WEATHER	<u>Partly cloudy</u>
<u>Mosser</u>				SEC.	<u>S.R. #163 North</u>	TEMP.	<u>75°</u>
<u>Barbour</u>				DESCRIPTION	<u>Ties for Control Points</u>		JOB NO.
<u>Redding</u>							

