

O.D.O.T. DISTRICT 2 SURVEY OFFICE (USE ONLY)

PERSONNEL _____ REFERENCE NO. 42 SHEET 1 OF 34
 NOTES RHOADES DATE 8/22/22 ROUTE SR 53
 H.C. NIESE WEATHER CLOUDY COUNTY OTTAWA
 R.C. AUBLE TEMP. 73° TOWNSHIP CATAWBA
 DWG BY RHOADES PID 102905 SECTION 35
 T 7 N R 17 E

TYPE MONUMENT MAG/WASHER

~~ON SURFACE~~ - BELOW ON

OFFSET \odot PAVEMENT 2.3' ~~±~~ : RT

10' TO RT EDGE PAVEMENT

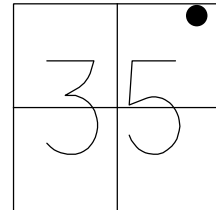
STATION: 704+78.63

HORZ.DATUM: NAD83 2011

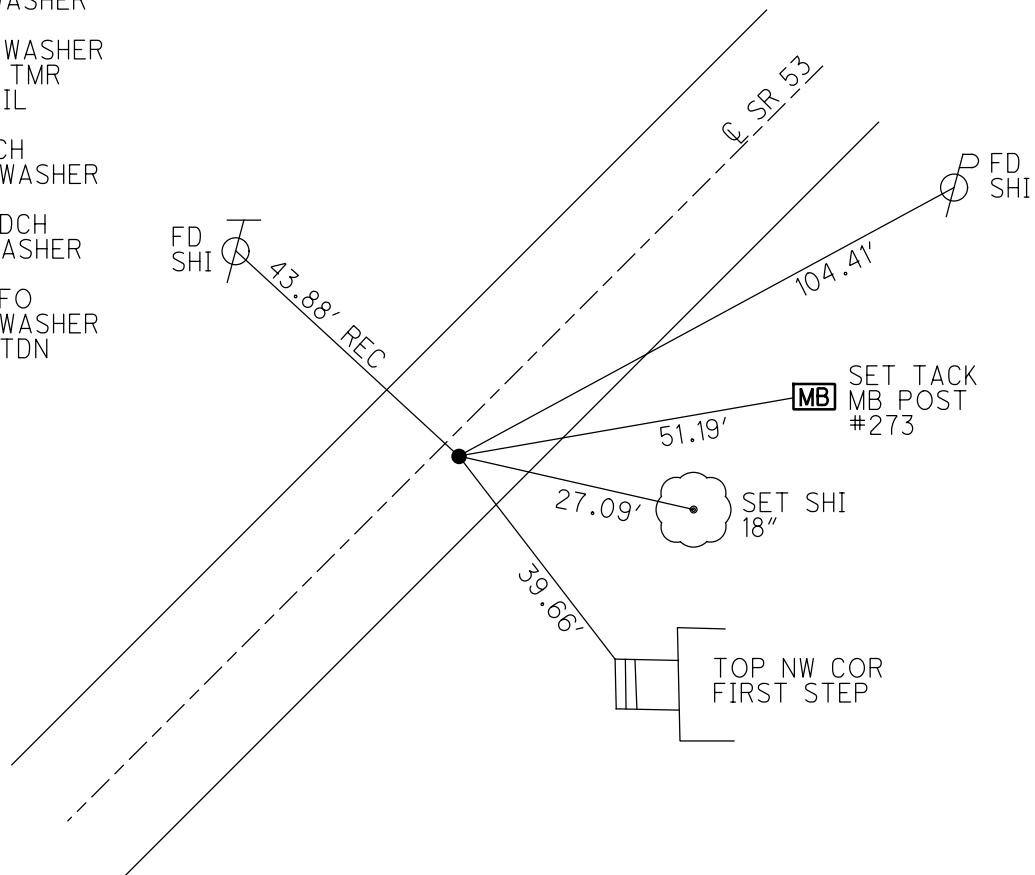
GEOID: NAVD88 2018

GRID: NORTHING: 679043.246

EASTING: 1870565.015



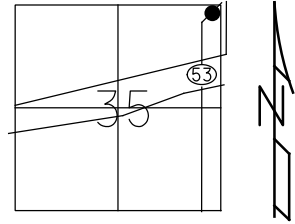
RECORD: P.I.
 STA 631+62.15
 SET P.K./WASHER
 ATOP RR SPIKE
 FD P.K./WASHER
 6/8/95
 SET P.K./WASHER
 5/30/96, TMR
 FD P.K.NAIL
 REF42
 8/5/11, DCH
 SET MAG/WASHER
 NEWREF42
 5/24/12, DCH
 FD MAG/WASHER
 REF42
 3/3/21, JFO
 SET MAG/WASHER
 5/15/23, TDN



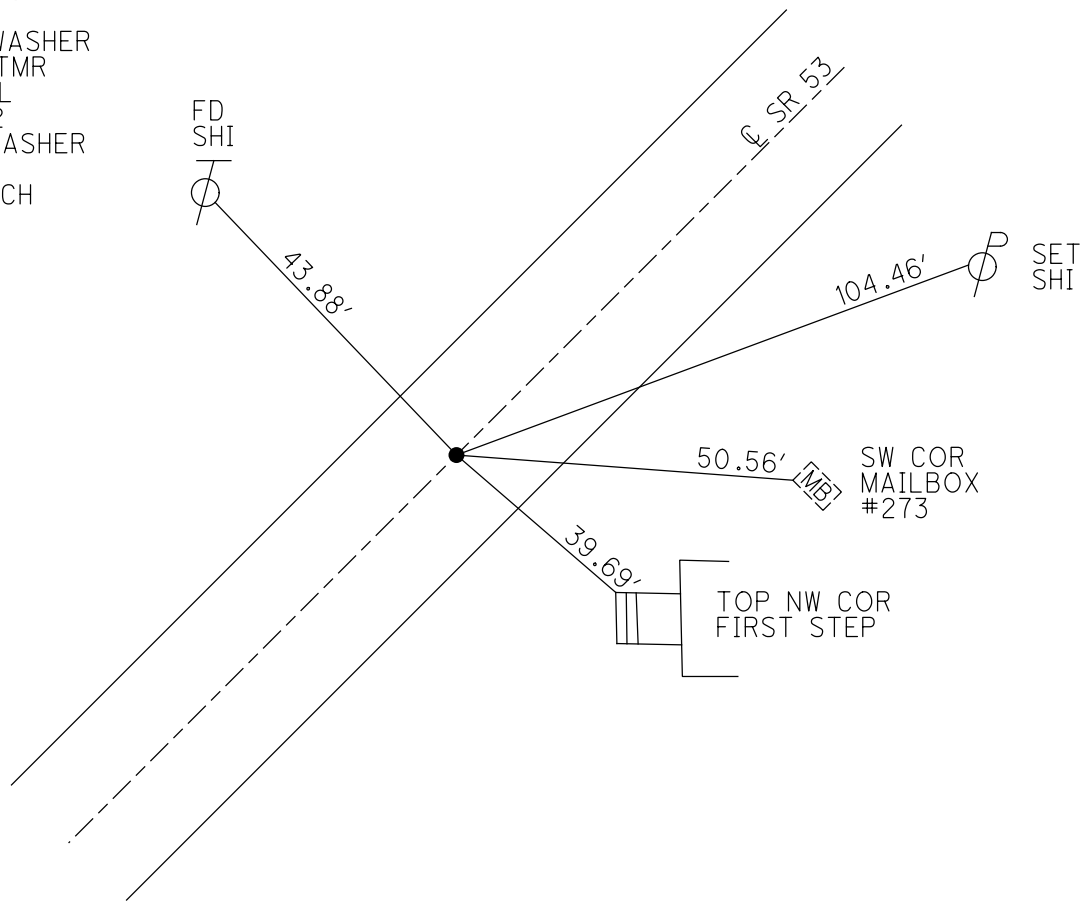
O.D.O.T. DISTRICT 2 SURVEY OFFICE (USE ONLY)

PERSONNEL _____ REFERENCE NO. 42 SHEET 4 OF 36
 NOTES HOMAN DATE 8/5/11 ROUTE SR 53
 H.C. HOMAN WEATHER SUNNY COUNTY OTTAWA
 R.C. HARBAUGH TEMP. 70° TOWNSHIP CATAWBA
 _____ SECTION 35
 _____ T 7 N R 17 E

TYPE MONUMENT P.K.NAIL
 ON SURFACE - ~~BELOW~~ ON
~~LEFT~~ - CL PAV'T - RIGHT 2.3'
10.0' TO RT EDGE PAVEMENT
 S.L.M. 705+00.15
 GRID: NORTHING: 679043.202 EASTING: 1870564.881



RECORD: P.I.
 STA 631+62.15
 SET PK & WASHER ATOP
 RR SPIKE 2' RT CL PAVMT
 FD P.K./WASHER
 6/8/95
 SET P.K./WASHER
 5/30/96, TMR
 FD P.K.NAIL
 GPS, REF42
 SET MAG/WASHER
 NEWREF42
 5/24/12, DCH



O.D.O.T. DISTRICT 2 SURVEY OFFICE

PERSONNEL _____

REFERENCE NO. 42

SHEET 3 OF 30

NOTES Rousos

H.C. Rousos

R.C. CANTERBURY

DATE 6-8-95

WEATHER CLOUDY

TEMP. 62°

ROUTE SR 53°

COUNTY OTTAWA

TOWNSHIP CATAWRA

SECTION _____

T _____ R _____

Reset

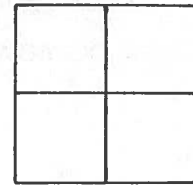
TYPE MONUMENT P.K. / WASHER 5-30-92

ON SURFACE - BELOW ON SURFACE

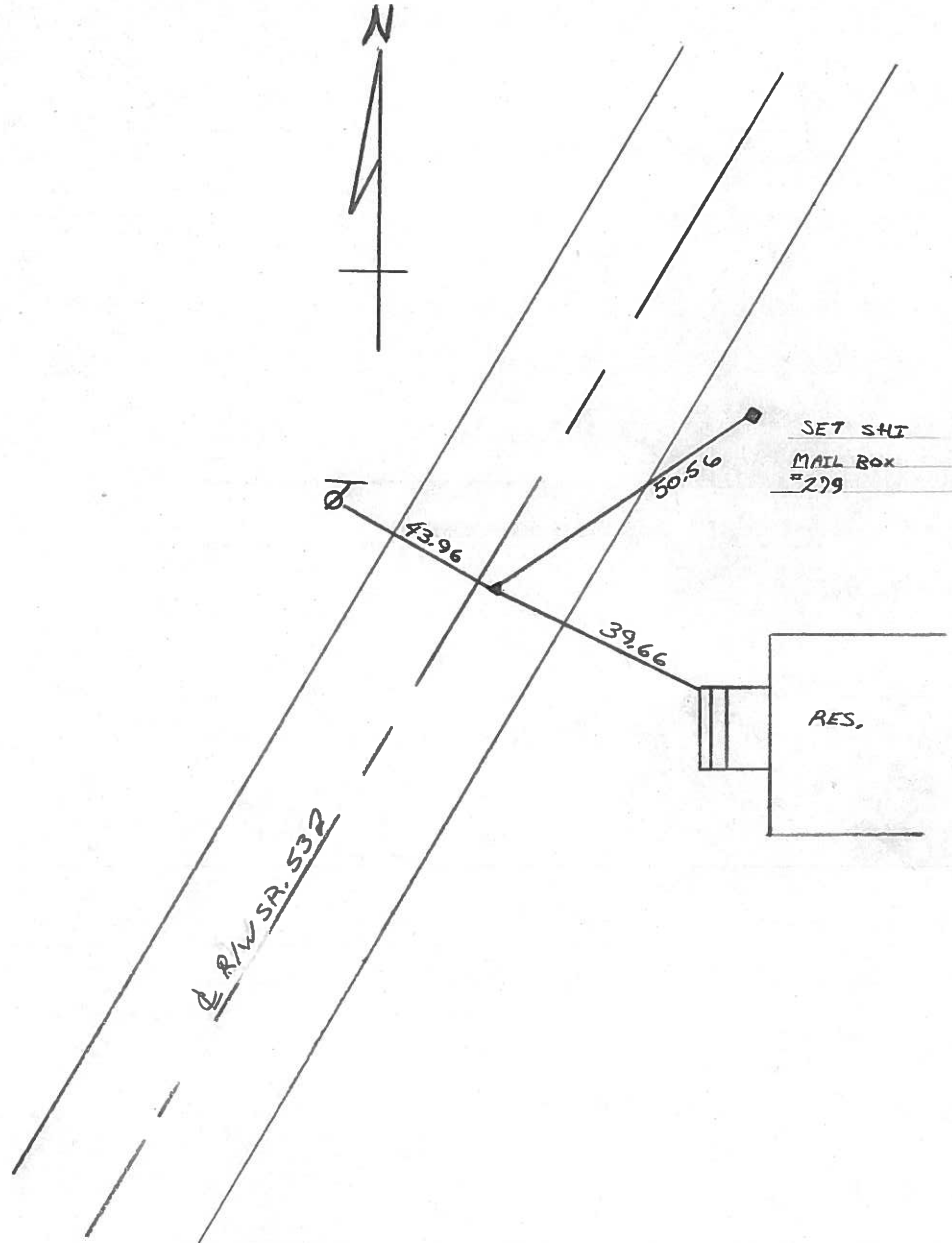
~~LEFT - 2' RT.~~ - RIGHT 2.3' RT &

10.0' TO RT EDGE PAVEMENT

S.L.M. 704 +62



Record
 P.I.
 631+62.15
 SET PK & WASHER ATOP
 R/R SPIKE 2' RT. & PAVMT.



Q.D.O.T. DISTRICT 2 SURVEY OFFICE

SHEET _____ OF _____

County Ottawa S.R. # 53

Date 8/28/84

Township Catawba

Weather overcast

Section _____

Temp. 68°

T N, R E

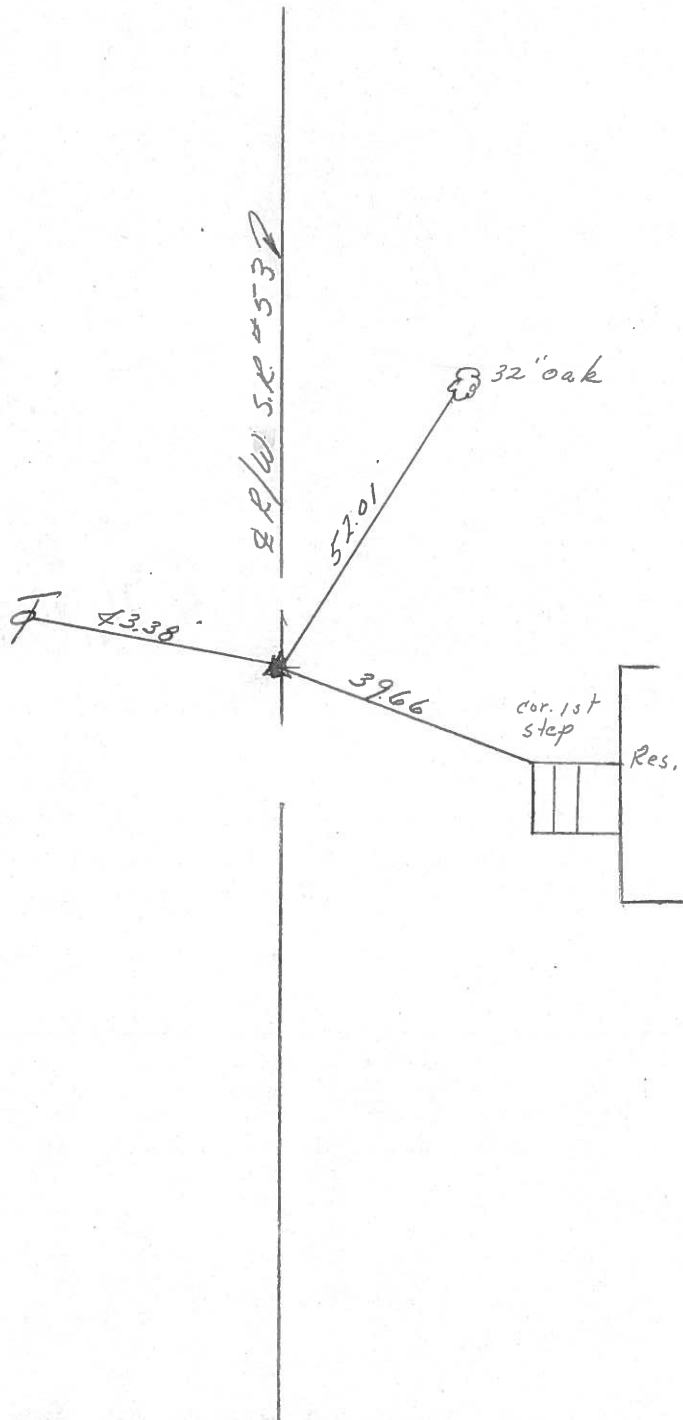
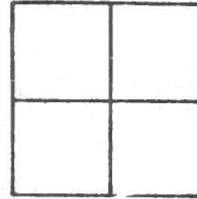
Personnel Cronin

Ripple

Geyman

Barbour

PT 42



P.I.
631 + 62.15
Set P.K. washer atop
R.R. spike 2' Rt & Point

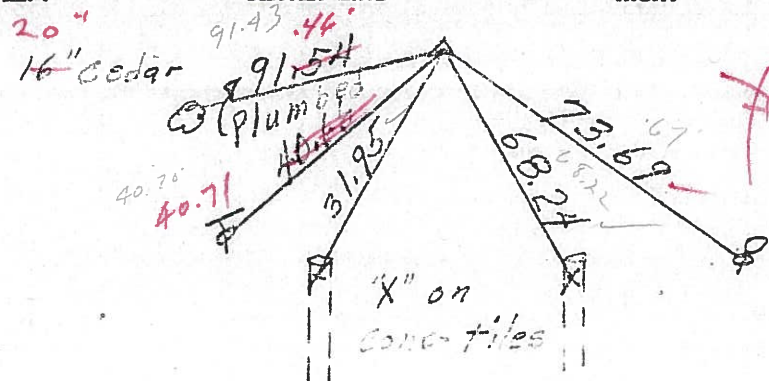
PERSONNEL	TITLE	PERSONNEL	TITLE	COUNTY	DATE
Schneider				Ottawa	5-17-71
Mosser				S. R. 53	WEATHER Fair
Bordour				SEC.	TEMP. 76°
Geyman					

DESCRIPTION From S.R. #163 - North JOB NO.

P.I. R/W
 641 + 30.45
 R.R. spk.
 3.5' L & R

44

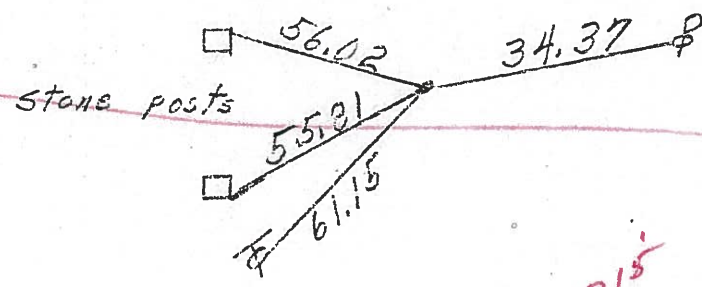
LEFT CENTER LINE RIGHT



17°
 3/12/84
 Sunny

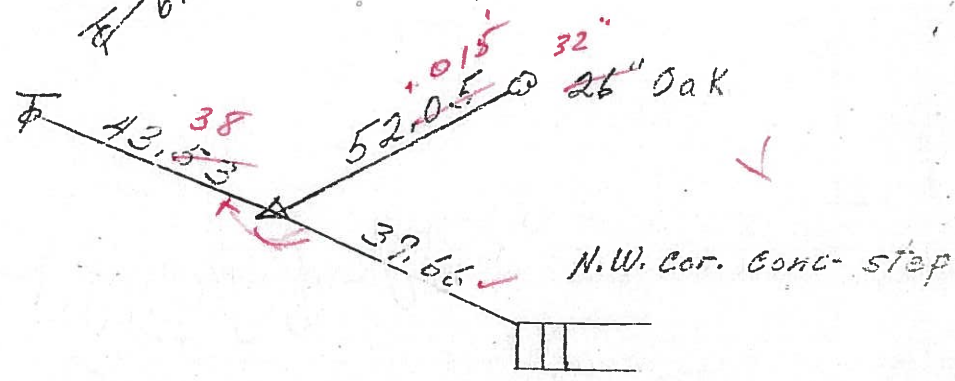
639 +
 Small spk.
 Stone posts

43



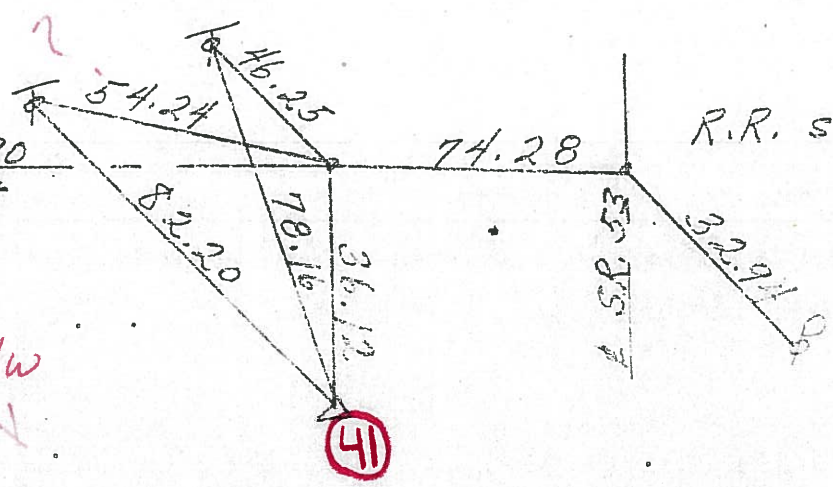
2' PL
 P.I. SUR R/W
 631 + 62.15
 R.R. spk.

42



P.I. Survey Co. Rd #30
 P.K. Nail west

R.R. spk



P.I. Const. SUR R/W
 623 + 38.85
 Iron Pin 69

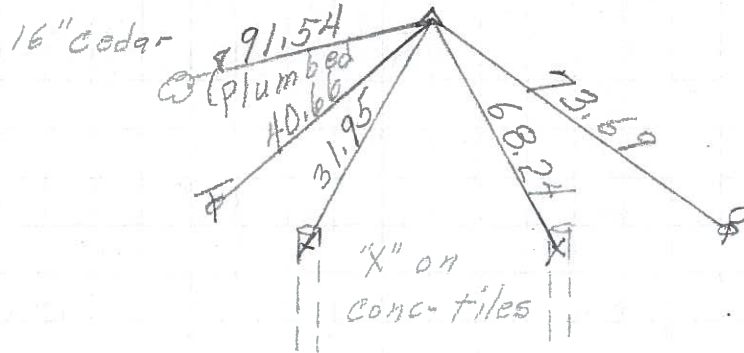
41

41

PERSONNEL	TITLE	PERSONNEL	TITLE	COUNTY	DATE	WEATHER	TEMP.
<u>Schneider</u>				<u>Ottawa</u>	<u>5-17-71</u>	<u>Fair</u>	<u>76°</u>
<u>Mosser</u>				S. R. <u>53</u>			
<u>Barbour</u>				SEC.			
<u>Geyman</u>							
DESCRIPTION <u>From S.R. #163 - North</u>				JOB NO.			
LEFT		CENTER LINE		RIGHT			

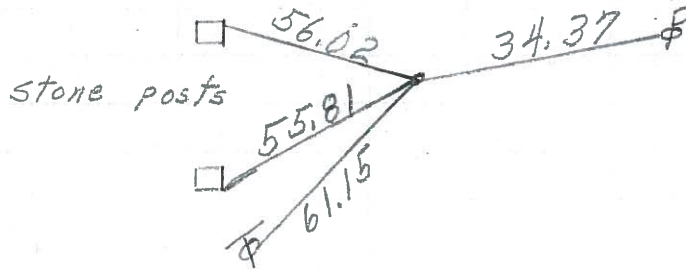
P. I.
641+30.45
R.R. spk.

(44)



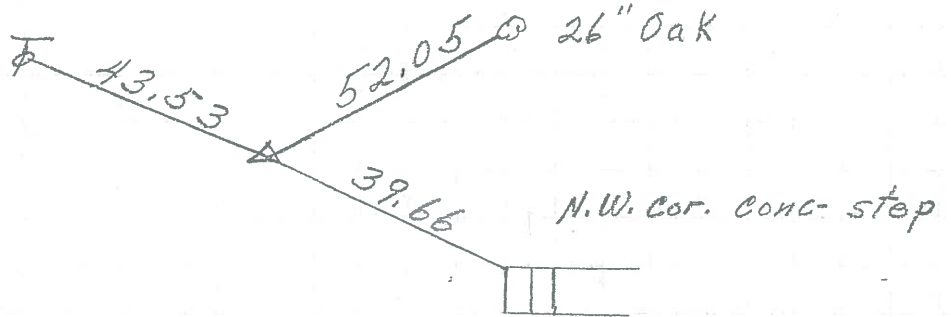
639+
Small spk.
R

43



P. I.
631+62.15
R. R. spk.

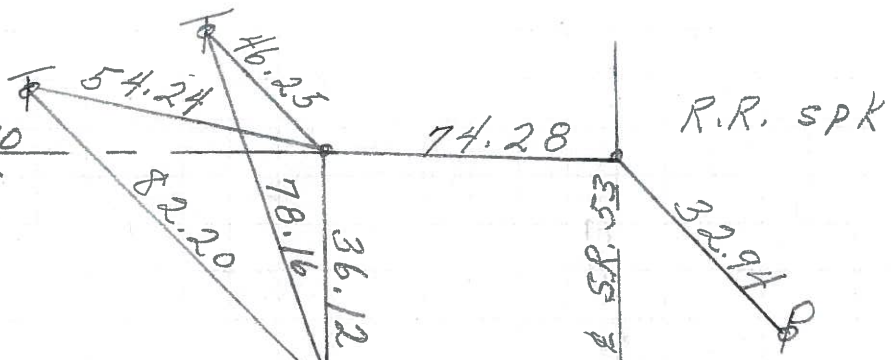
(42)



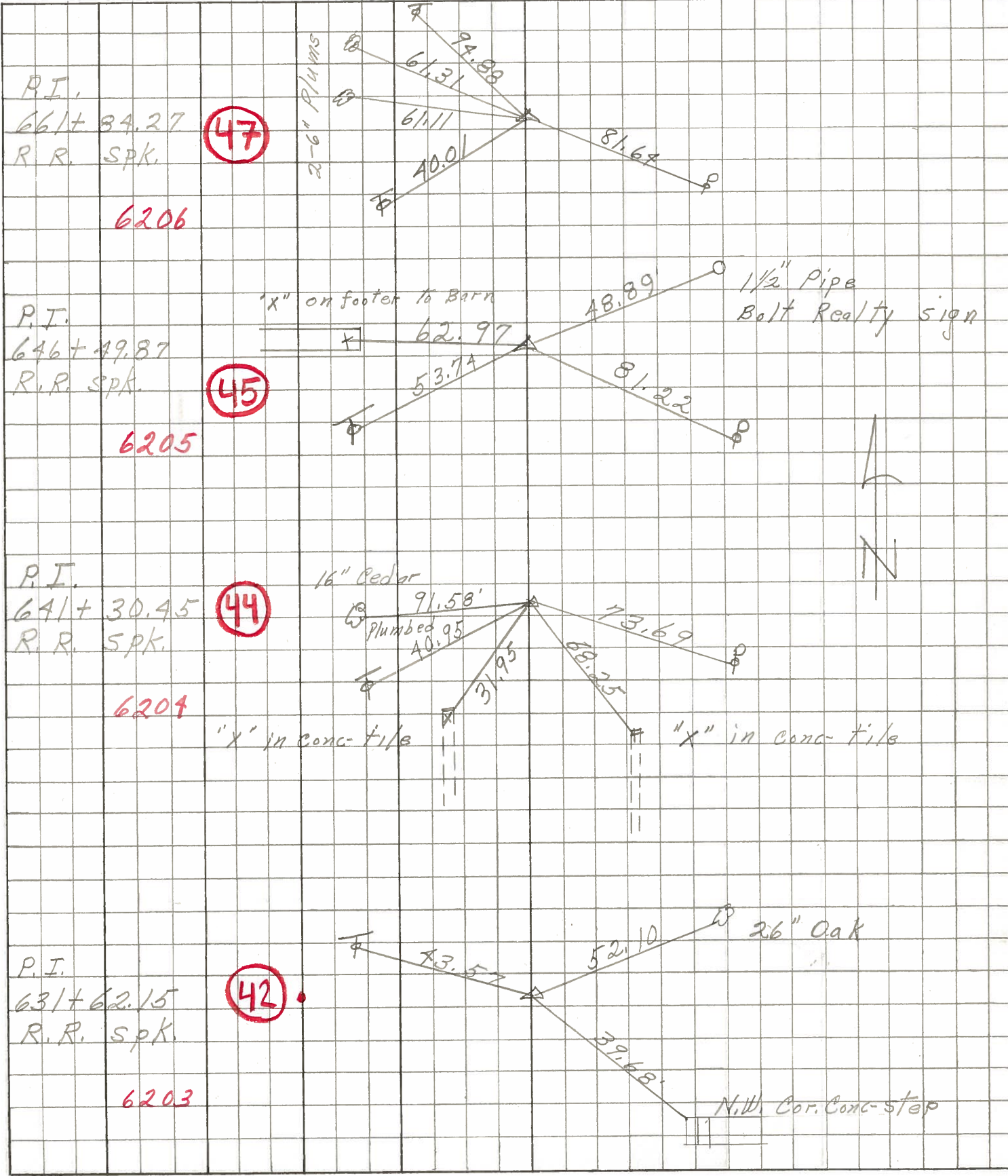
P. I. Survey Co. Rd #30
P. K. Nail west

P. I. Const.
623+38.85
Iron Pin

(41)



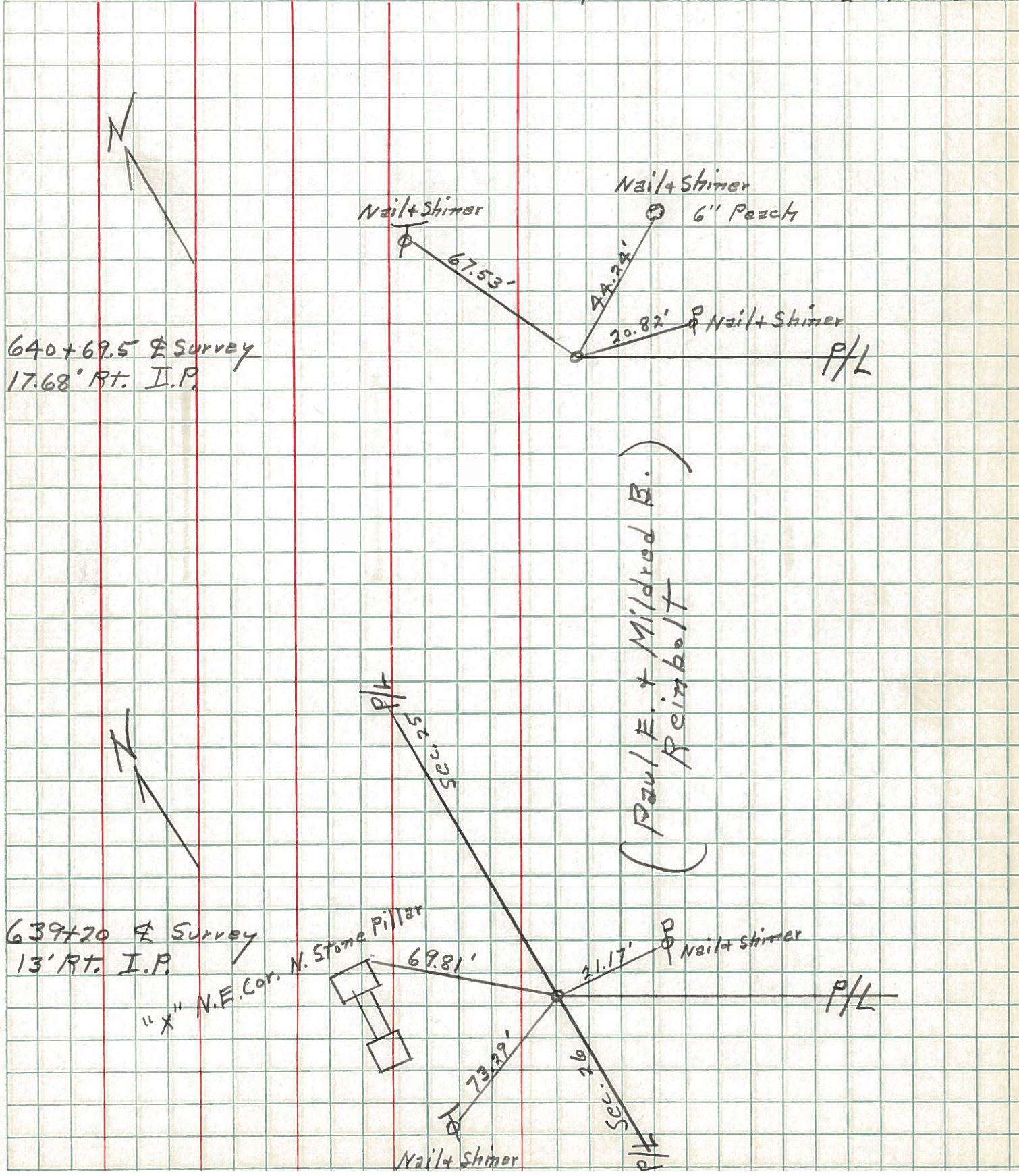
PERSONNEL TITLE PERSONNEL TITLE COUNTY Ottawa DATE 8-1-68
Schneider Potts
 PERSONNEL TITLE PERSONNEL TITLE S. R. 53 WEATHER Fair
Mosser Barbour Redding
 S. R. 163 N th TEMP. 80°
 SEC. 163 N th
 DESCRIPTION Ties for Control Point JOB NO.



PERSONNEL	TITLE	PERSONNEL	TITLE
Hsh			
Cromin			
Ripple			
Leemaster			

COUNTY Off zwa DATE May 5, '58
 S. R. #53 Catawba Isl. WEATHER _____
 SEC Off. 53-11.55 (PT. #1) TEMP _____

DESCRIPTION Ties for Survey Pins & P/L JOB NO. 02191
 LEFT CENTER LINE RIGHT Survey I-15058



PERSONNEL TITLE PERSONNEL TITLE

COUNTY OTTAWA

DATE JAN. 17, 1958

SWORDEN

HOLCOMBE

S. R. # 53

WEATHER CLEAR

SAGE

AULT

SEC. _____

TEMP. + 30°

DESCRIPTION Ties for Survey Pins

LEFT

CENTER LINE

RIGHT

JOB NO. _____

