

O.D.O.T. DISTRICT 2 SURVEY OFFICE (USE ONLY)

PERSONNEL

REFERENCE NO. 44

SHEET 2 OF 34

NOTES RHOADES

DATE 8/22/22

ROUTE SR 53

H.C. NIESE

WEATHER CLOUDY

COUNTY OTTAWA

R.C. AUBLE

TEMP. 73°

TOWNSHIP CATAWBA

SECTION 25

DWG BY RHOADES

PID 102905

T 7 N R 17 E

TYPE MONUMENT MAG/WASHER

ON SURFACE - ~~BELOW~~ ON

OFFSET ☉ PAVEMENT 3.7" LT : ~~RT~~

8.3' TO LT EDGE PAVEMENT

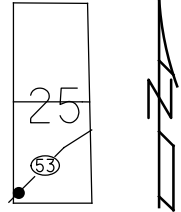
STATION: 714+46.11

HORZ.DATUM: NAD83 2011

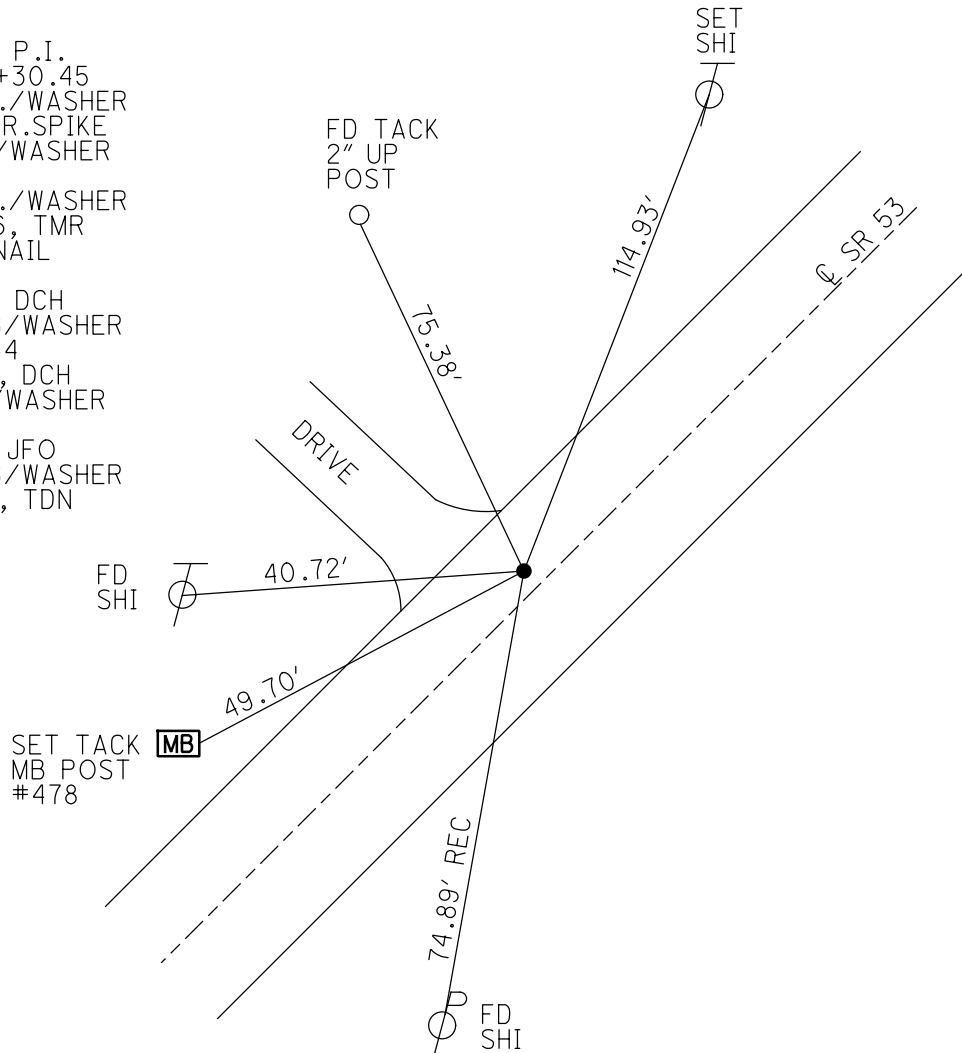
GEOID: NAVD88 2018

GRID: NORTHING: 679917.392

EASTING: 1870979.773



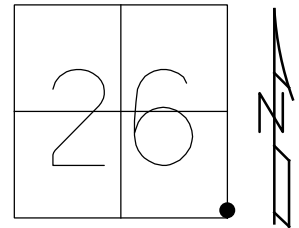
RECORD: P.I.  
 STA 641+30.45  
 SET P.K./WASHER  
 ATOP R.R.SPIKE  
 FD P.K./WASHER  
 6/8/95  
 SET P.K./WASHER  
 5/30/96, TMR  
 FD P.K.NAIL  
 REF44  
 8/25/11, DCH  
 SET MAG/WASHER  
 NEWREF44  
 5/24/12, DCH  
 FD MAG/WASHER  
 REF44  
 3/3/21, JFO  
 SET MAG/WASHER  
 5/15/23, TDN



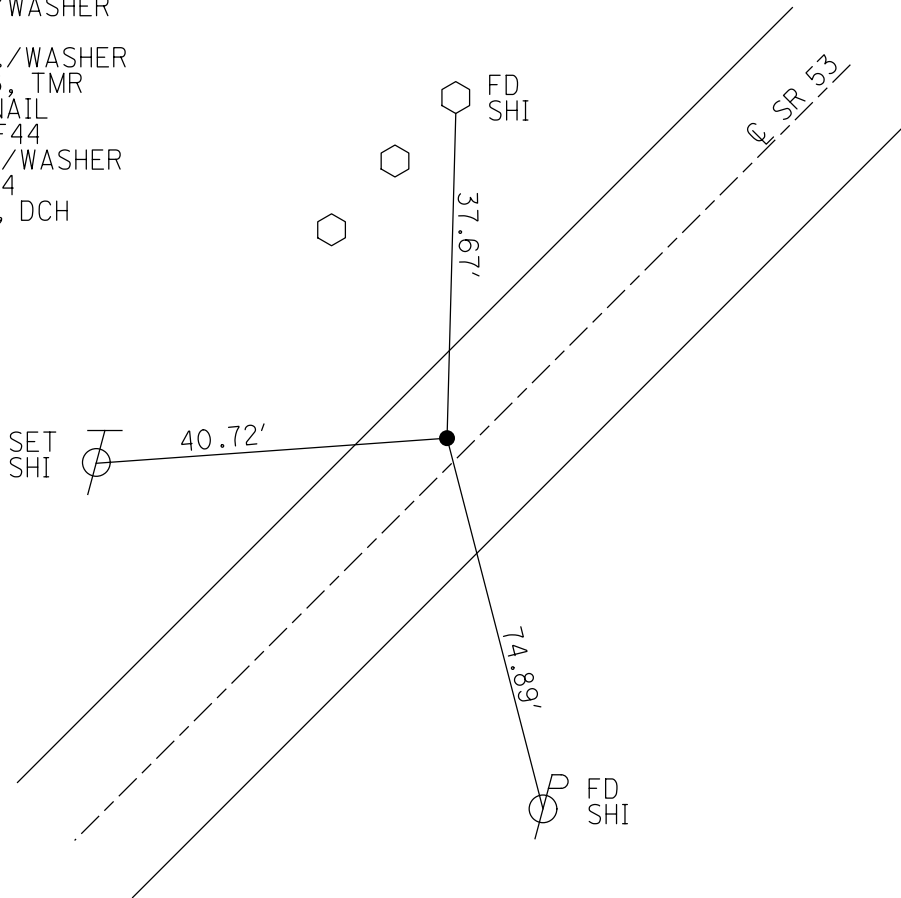
O.D.O.T. DISTRICT 2 SURVEY OFFICE (USE ONLY)

PERSONNEL \_\_\_\_\_ REFERENCE NO. 44 SHEET 5 OF 36  
 NOTES HOMAN DATE 8/25/11 ROUTE SR 53  
 H.C. HOMAN WEATHER SUNNY COUNTY OTTAWA  
 R.C. HARBAUGH TEMP. 70° TOWNSHIP CATAWBA  
 \_\_\_\_\_ SECTION 26  
 \_\_\_\_\_ T 7 N R 17 E

TYPE MONUMENT P.K.NAIL  
 ON SURFACE - ~~BELOW~~ ON  
 LEFT - ℄ PAV'T - ~~RIGHT~~ 3.7'  
8.3' TO LT EDGE PAVEMENT  
 S.L.M. 714+67.62  
 GRID: NORTHING: 679917.324 EASTING: 1870979.669



RECORD: P.I.  
 STA 641+30.45  
 SET PK & WASHER ATOP  
 RR SPIKE 3.5' RT ℄ PAVMT  
 FD P.K./WASHER  
 6/8/95  
 SET P.K./WASHER  
 5/30/96, TMR  
 FD P.K.NAIL  
 GPS, REF44  
 SET MAG/WASHER  
 NEWREF44  
 5/24/12, DCH



# O.D.O.T. DISTRICT 2 SURVEY OFFICE

PERSONNEL \_\_\_\_\_

REFERENCE NO. 44

SHEET 4 OF 30

NOTES ROUSAS

H.C. ROUSAS

R.C. CANTERBURY

DATE 6-8-95

WEATHER CLOUDY

TEMP. 62°

ROUTE \_\_\_\_\_

COUNTY OTTAWA

TOWNSHIP CATAWBA

SECTION \_\_\_\_\_

T \_\_\_\_\_ R \_\_\_\_\_

Reset

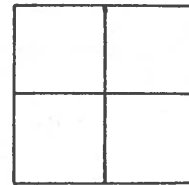
TYPE MONUMENT P.K. WASHER 5-30-96

ON SURFACE ~~BELOW~~ ON SURFACE

LEFT-☉ PAV'T. ~~RIGHT~~ 3.7' LT. ☉

8.3 TO LT EDGE PAVEMENT

S.L.M. 714+35

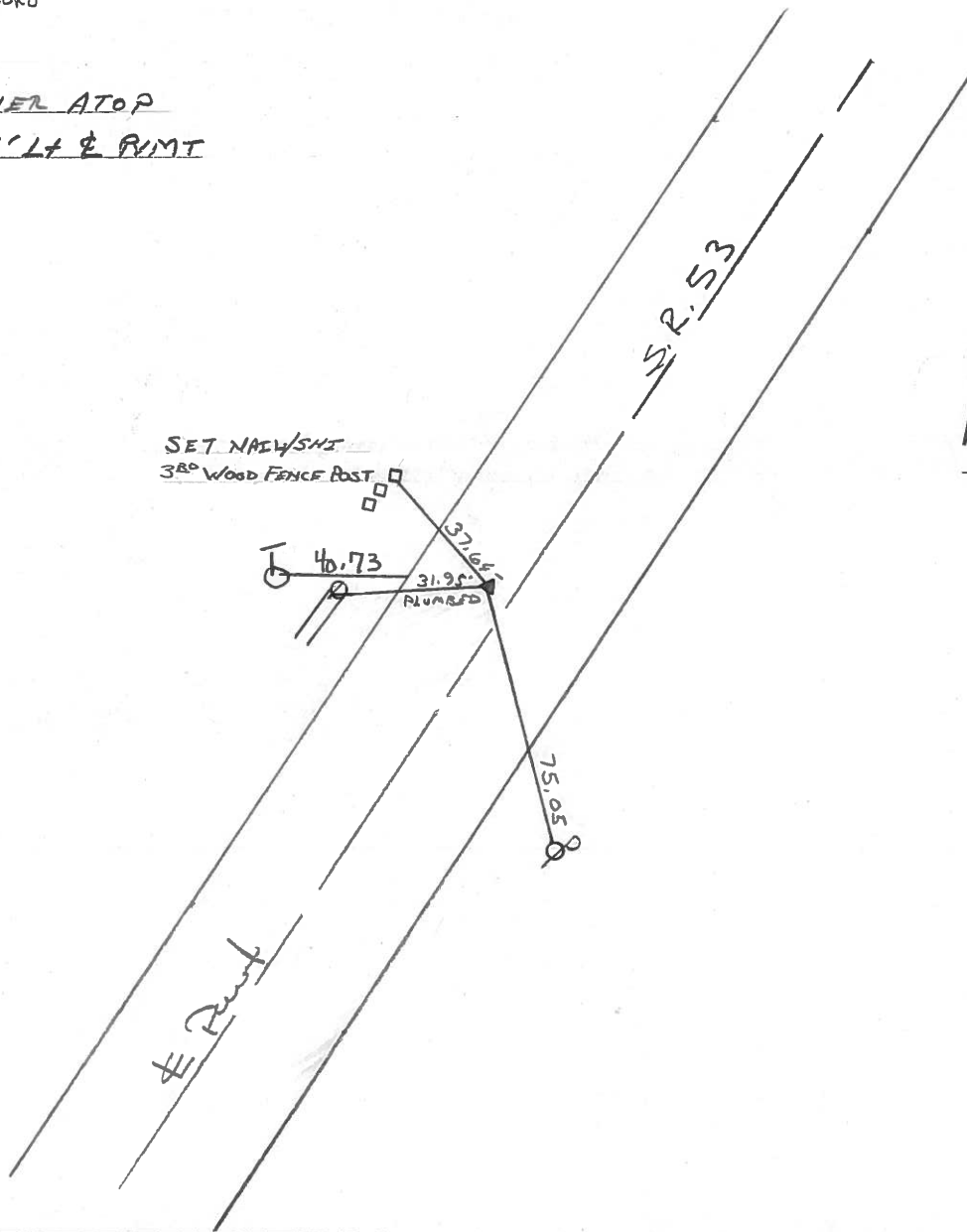


PI R/W RECORD

641+30.45

SET PK&WASHER ATOP

R.R SPIKE 3.5' LT & PVT



ODOT. DISTRICT 2 SURVEY OFFICE

SHEET \_\_\_\_\_ OF \_\_\_\_\_

2

County Ottawa S.R. 53

Date 8/28/84

Township Catawba

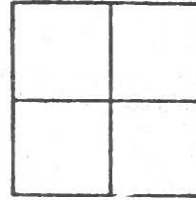
Weather overcast

Section \_\_\_\_\_

Temp. 68°

T N, R E

Personnel Cronin



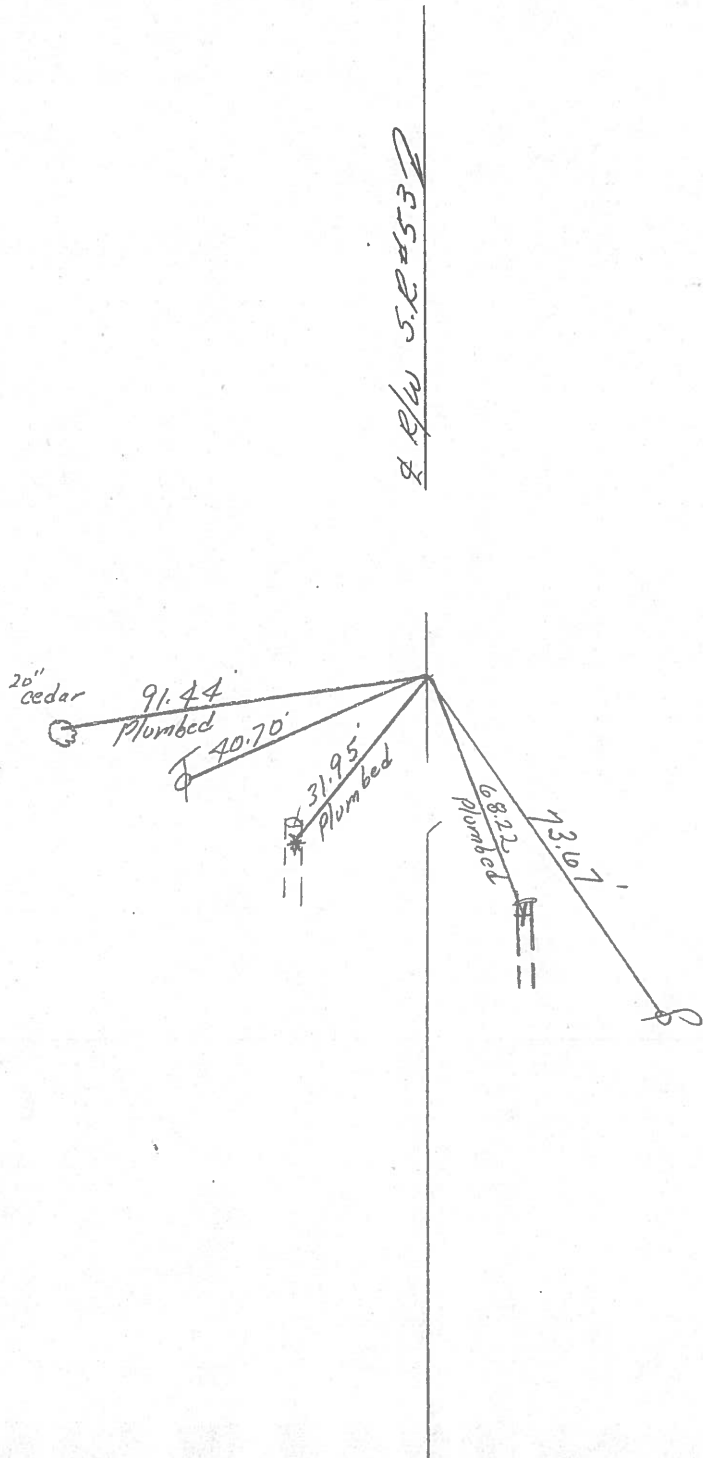
Ripple

Geyman

Barbour

PT 44

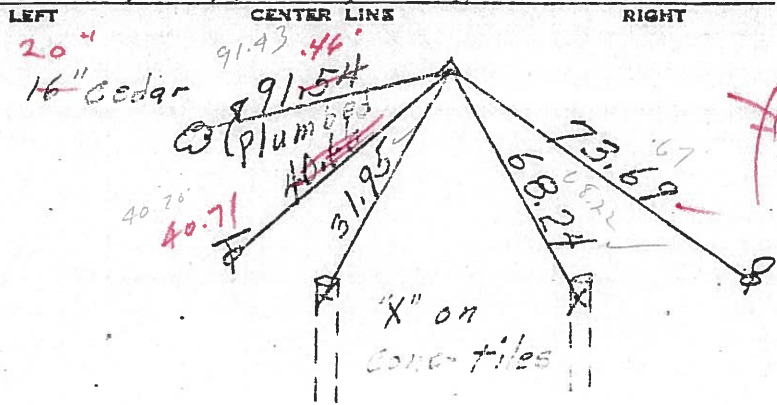
P.I. R/W  
641+30.45  
set P.R. & washer at top  
R.R. spike 3.5 Lt. & Permit



PERSONNEL	TITLE	PERSONNEL	TITLE	COUNTY	DATE	WEATHER	TEMP.
Schneider				Ottawa	5-17-71	Fair	76°
Mosser				S. R. 53			
Bardour							
Geyman							

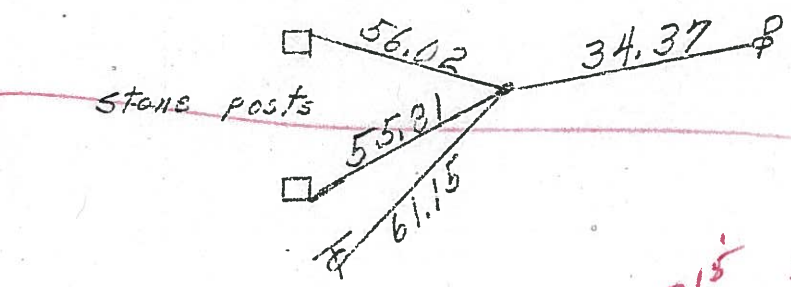
DESCRIPTION From S.R. #163 - North

P.I. <sup>R/W</sup> ~~SUR~~  
 641 + 30.45  
 R.R. SPK. ✓  
 3.5' ~~42~~  
 (44)

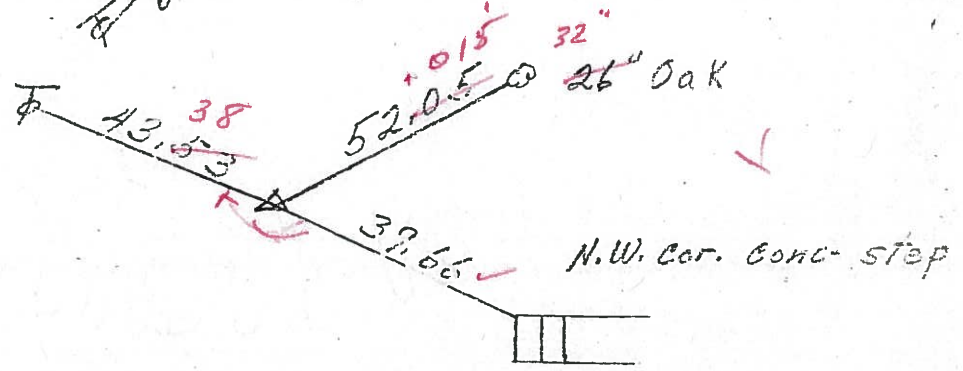


17°  
 3/12/84  
 Sunny

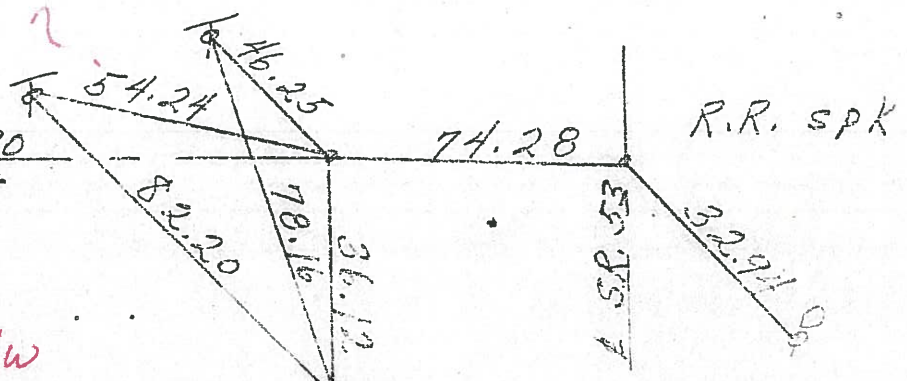
639 +  
 Small SPK.  
 R  
 43



2' ~~PL~~  
 P.I. ~~SUR~~ <sup>R/W</sup>  
 631 + 62.15  
 R.R. SPK. ✓  
 (42)



P.I. Survey Co. Rd #30  
 P.K. Nail west



P.I. ~~Consi.~~ <sup>SUR</sup> <sup>R/W</sup>  
 623 + 38.85  
 Iron pin 69

PERSONNEL TITLE PERSONNEL TITLE

Schneider

COUNTY Ottawa

DATE 5-17-71

Mosser

S. R. 53

WEATHER Fair

Barbour

SEC.

TEMP. 76°

Geyman

DESCRIPTION From S.R. #163 - North

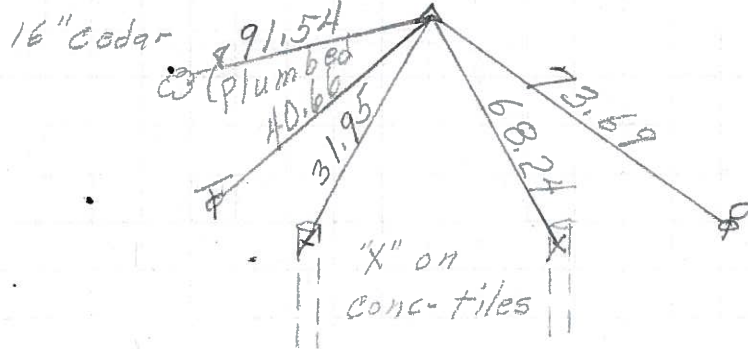
JOB NO.

LEFT

CENTER LINE

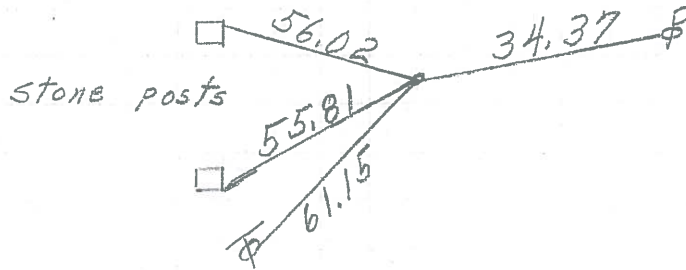
RIGHT

P.I.  
641+30.45  
R.R. SPK.



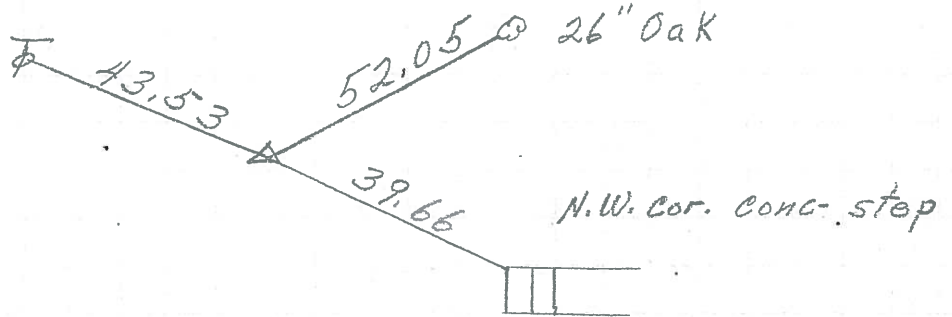
44

639+  
Small spk.  
R



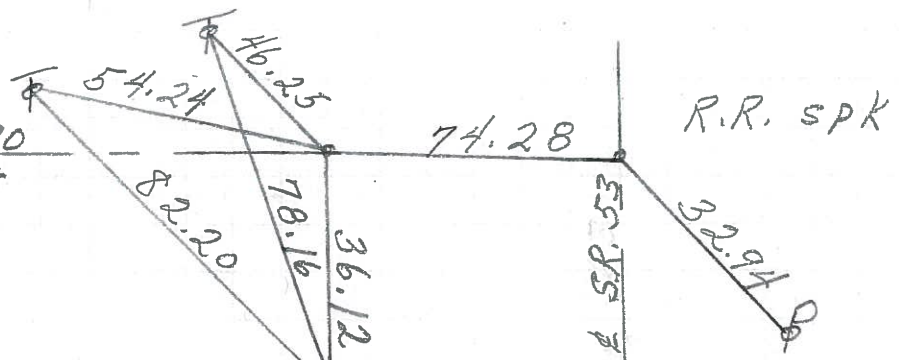
43

P.I.  
631+62.15  
R.R. SPK.



42

P.I. Survey Co. Rd #30  
P.K. Nail West



41

P.I. Const.  
623+38.85  
Iron Pin

PERSONNEL	TITLE	PERSONNEL	TITLE	COUNTY	DATE
Schneider		Potts		Ottawa	8-1-68
Mosser				S. R. 53	WEATHER Fair
Barbour				S.R. 163 North	TEMP. 80°
Redding				SEC. 163 North	
DESCRIPTION	Ties for Control Points				JOB NO.

