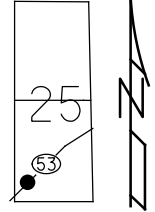


O.D.O.T. DISTRICT 2 SURVEY OFFICE (USE ONLY)

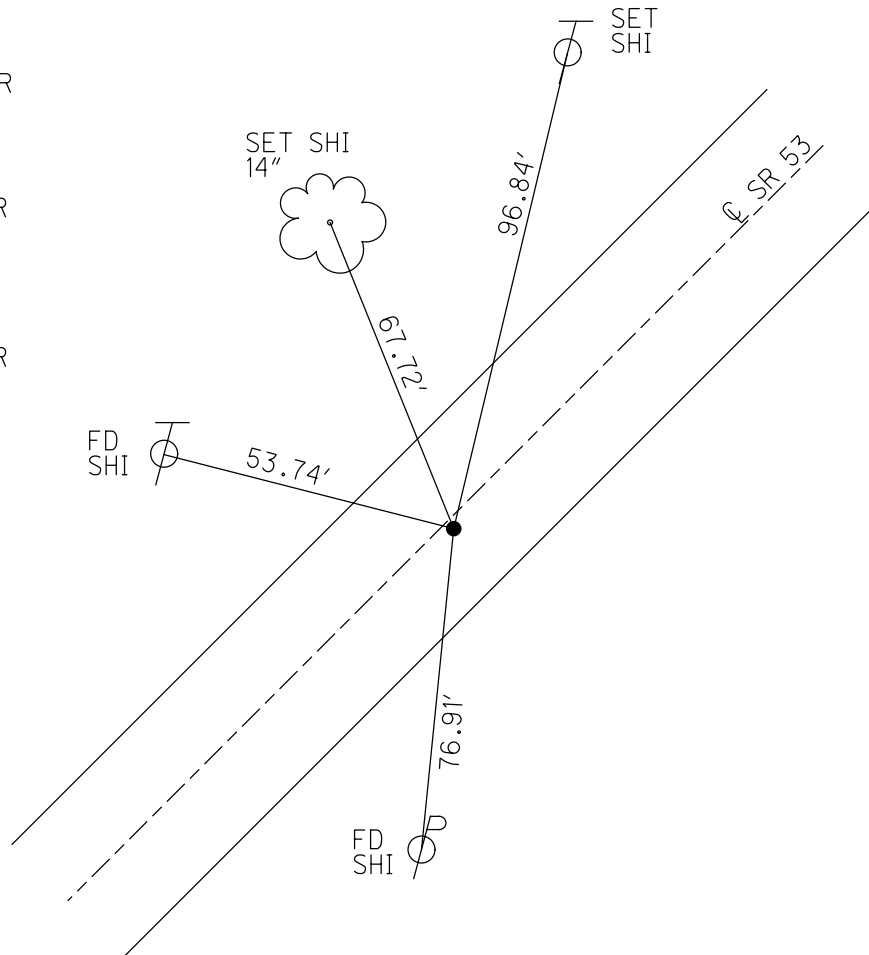
PERSONNEL \_\_\_\_\_ REFERENCE NO. 45 SHEET 3 OF 34  
 NOTES RHOADES DATE 8/22/22 ROUTE SR 53  
 H.C. NIESE WEATHER CLOUDY COUNTY OTTAWA  
 R.C. AUBLE TEMP. 73° TOWNSHIP CATAWBA  
 DWG BY RHOADES PID 102905 SECTION 25  
 T 7 N R 17 E

TYPE MONUMENT MAG/WASHER  
 ON SURFACE - ~~BELOW~~ ON  
 OFFSET 1' LT : RT  
11.7' TO RT EDGE PAVEMENT  
 STATION: 719+65.72

HORZ.DATUM: NAD83 2011 GEOID: NAVD88 2018  
 GRID: NORTHING: 680371.179 EASTING: 1871233.185



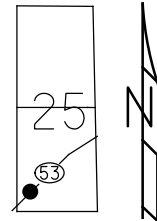
RECORD: P.I.  
 STA 646+49.87  
 FD P.K./WASHER  
 6/8/95  
 SET P.K./WASHER  
 5/30/96, TMR  
 FD P.K.NAIL  
 REF45  
 8/25/11, DCH  
 SET MAG/WASHER  
 NEWREF45  
 5/24/12, DCH  
 FD MAG/WASHER  
 REF45  
 3/3/21, JFO  
 SET MAG/WASHER  
 5/15/23, TDN



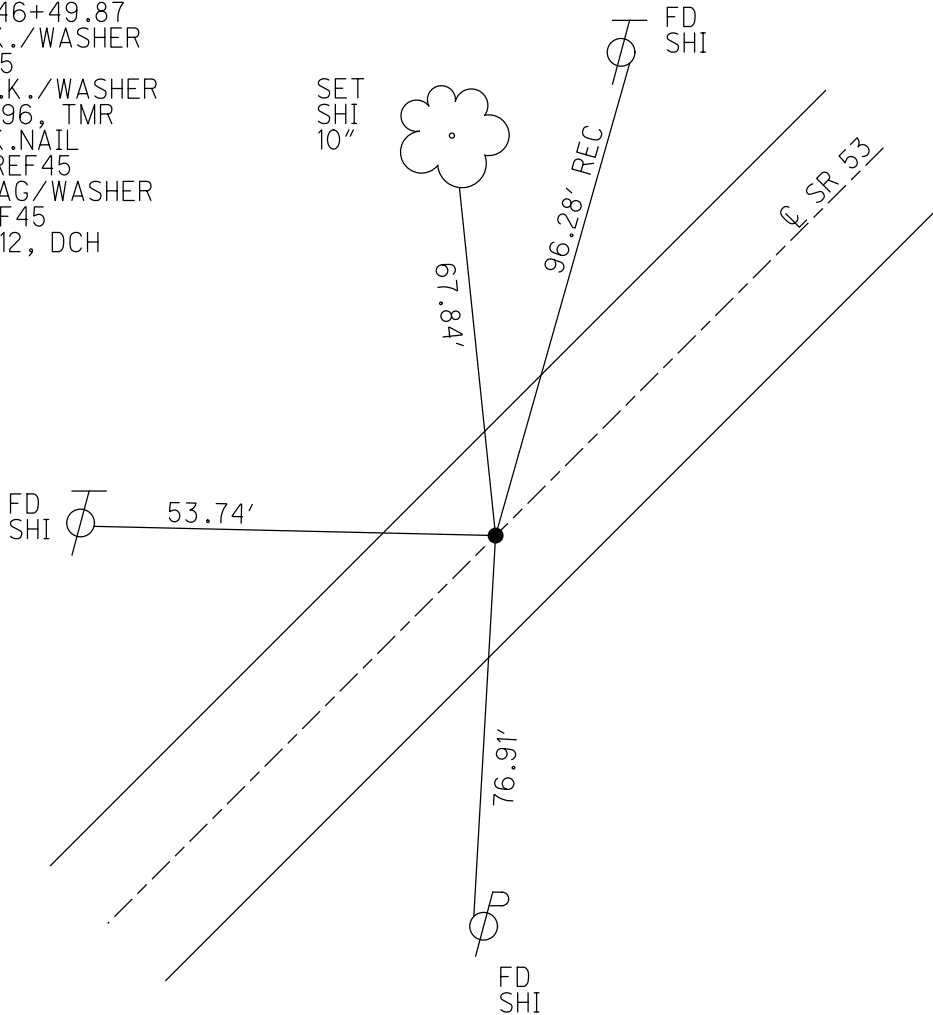
O.D.O.T. DISTRICT 2 SURVEY OFFICE (USE ONLY)

PERSONNEL \_\_\_\_\_ REFERENCE NO. 45 SHEET 6 OF 36  
 NOTES HOMAN DATE 8/25/11 ROUTE SR 53  
 H.C. HOMAN WEATHER SUNNY COUNTY OTTAWA  
 R.C. HARBAUGH TEMP. 70° TOWNSHIP CATAWBA  
 \_\_\_\_\_ SECTION 25  
 \_\_\_\_\_ T 7 N R 17 E

TYPE MONUMENT P.K.NAIL  
 ON SURFACE - ~~BELOW~~ ON  
 LEFT - ☉ PAV'T - RIGHT ON  
11.7' TO RT EDGE PAVEMENT  
 S.L.M. 719+87.29  
 GRID: NORTHING: 680371.196 EASTING: 1871233.034



RECORD: P.I.  
 STA 646+49.87  
 FD P.K./WASHER  
 6/8/95  
 SET P.K./WASHER  
 5/30/96, TMR  
 FD P.K.NAIL  
 GPS, REF45  
 SET MAG/WASHER  
 NEWREF45  
 5/24/12, DCH



# O.D.O.T. DISTRICT 2 SURVEY OFFICE

PERSONNEL \_\_\_\_\_

REFERENCE NO. 45

SHEET 5 OF 30

NOTES LOHRKIC

H.C. ROUSOS

DATE 6-8-95

ROUTE S.R. 53

R.C. CANTERBURY

WEATHER Cloudy

COUNTY OTTAWA

TEMP. +6!

TOWNSHIP CANTONMENT ISLAND

SECTION 25

T. \_\_\_\_\_ R. \_\_\_\_\_

Reset

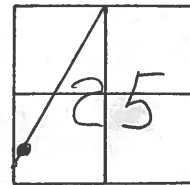
TYPE MONUMENT P.K. / WASHER 5-30-96

ON SURFACE - BELOW Yes

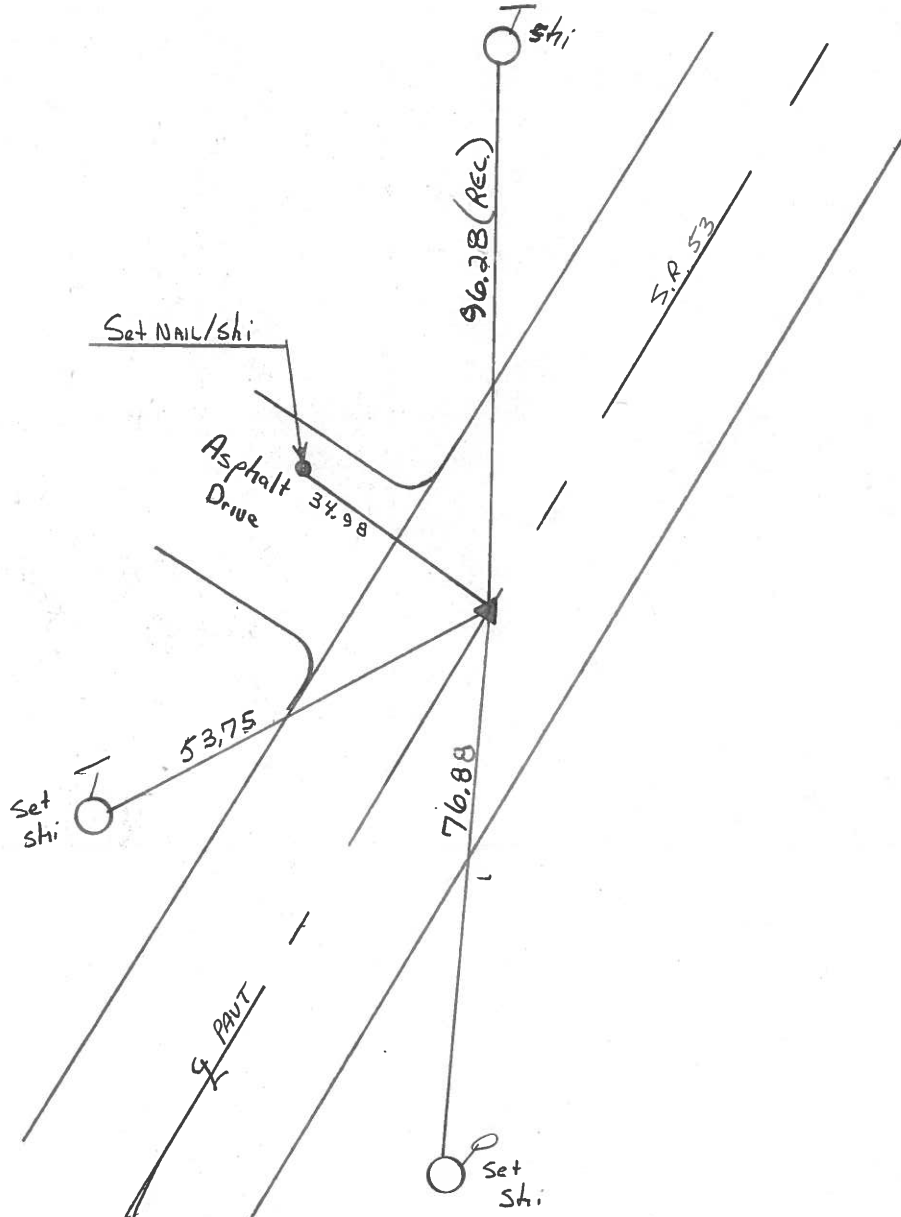
~~LEFT - C~~ PAV'T. - ~~RIGHT~~ Yes

11.7 TO R+ EDGE PAVEMENT

S.L.M. 712+56



RECORD  
P.I. Station  
646 + 49.87



ODOT. DISTRICT 2 SURVEY OFFICE

SHEET \_\_\_\_\_ OF \_\_\_\_\_

(3)

County Ottawa S.R. #53

Date 8/28/84

Township Catawba

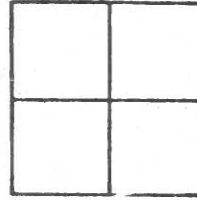
Weather overcast

Section \_\_\_\_\_

Temp. 68°

T N, R E

Personnel Cronin



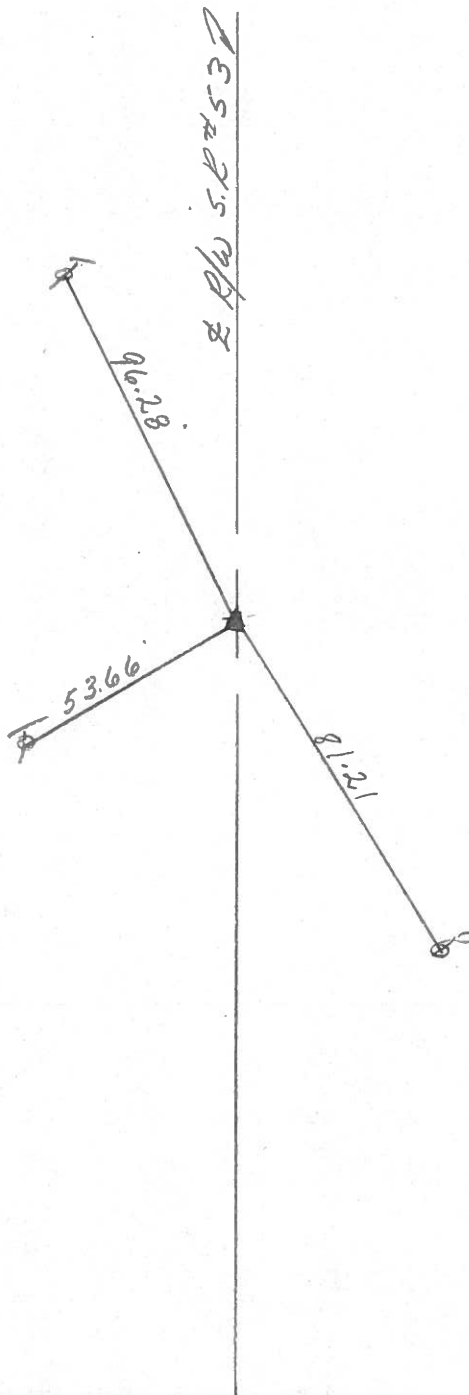
PT 45

Ripple

Geyman

Barbour

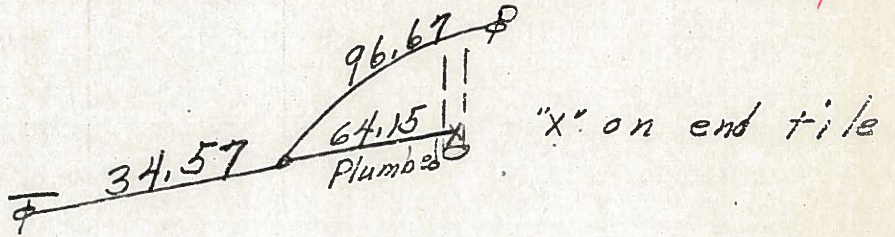
P.I. R/W  
646 + 49.87  
set P.K. & washer atop  
R.R. spike



PERSONNEL	TITLE	PERSONNEL	TITLE	COUNTY	DATE	WEATHER	TEMP.
Schneider				Ottawa	5-17-71	Fair	75°
Mosser				S. R. 53			
Barbour				SEC.			
Geyman							
DESCRIPTION S.R. #163 North							
	LEFT	CENTER LINE	RIGHT	JOB NO.			

17"  
3/12/84  
sunny

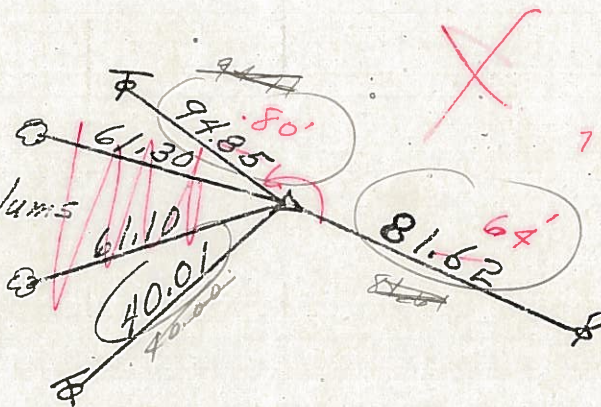
P.T. 662+74.34  
R.R. Spk.



48

P.I. <sup>R/W</sup> 506  
661+84.27  
R.R. Spk.

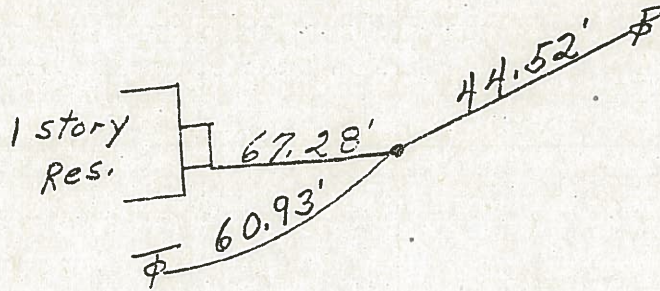
2-6" Plums



661+84.27  
72+70  
33+54.27

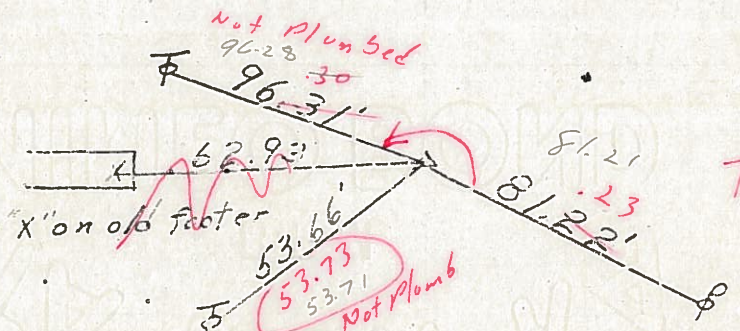
47

P.C. 660+94.20  
R.R. Spk.



46

P.I. <sup>R/W</sup> 50R  
646+49.87  
R.R. Spk.



45

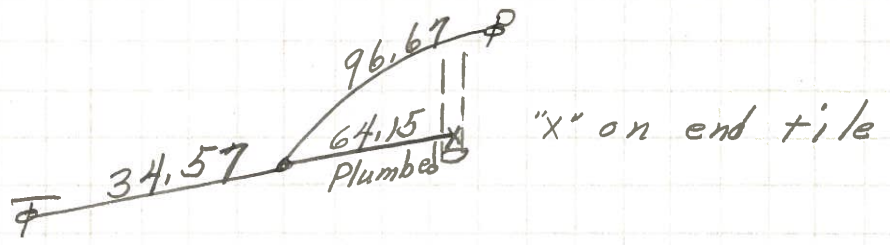
3 ties on this side was Plumb

PERSONNEL	TITLE	PERSONNEL	TITLE
Schneider			
Mosser			
Barbour			
Geyman			

COUNTY Ottawa DATE 5-17-71  
 S. R. 53 WEATHER Fair  
 SEC. \_\_\_\_\_ TEMP. 75°

DESCRIPTION S.R. #163 North JOB NO. \_\_\_\_\_  
 LEFT CENTER LINE RIGHT

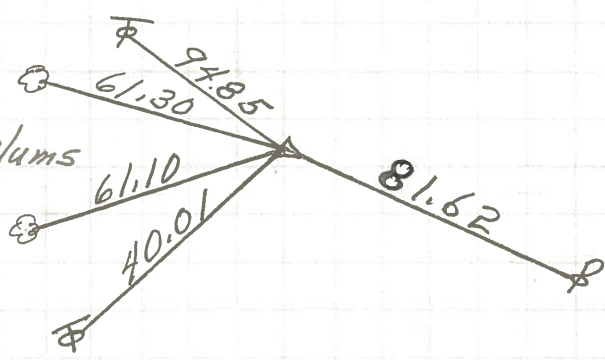
P.T. 662+74.34  
 R.R. spk.



648-A

P.I.  
 661+84.27  
 R.R. spk.

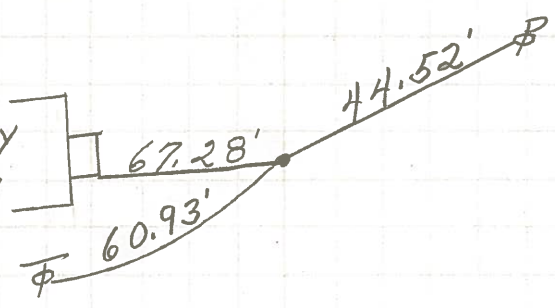
2-6" Plums



47

P.C. 660+94.20  
 R.R. spk.

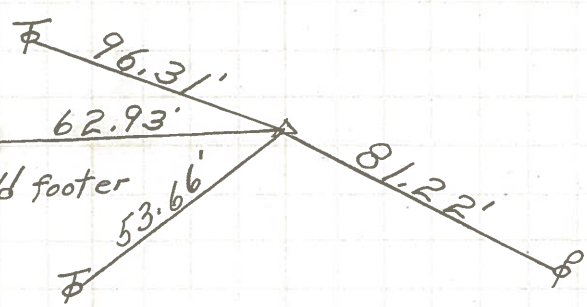
1 story Res.



46-A

P.I.  
 646+49.87  
 R.R. spk.

"X" on old footer



45 • 3 ties on this side

PERSONNEL	TITLE	PERSONNEL	TITLE	COUNTY	<u>Ottawa</u>	DATE	<u>8-1-68</u>	
<u>Schneider</u>		<u>Potts</u>		S. R.	<u>53</u>	WEATHER	<u>Fair</u>	
<u>Mosser</u>				S.R.	<u>163 North</u>	TEMP.	<u>80°</u>	
<u>Barbour</u>				SEC.				
<u>Redding</u>								
DESCRIPTION	<u>Ties for Control Points</u>						JOB NO.	

