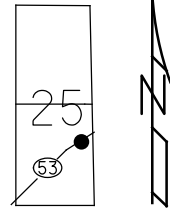


O.D.O.T. DISTRICT 2 SURVEY OFFICE (USE ONLY)

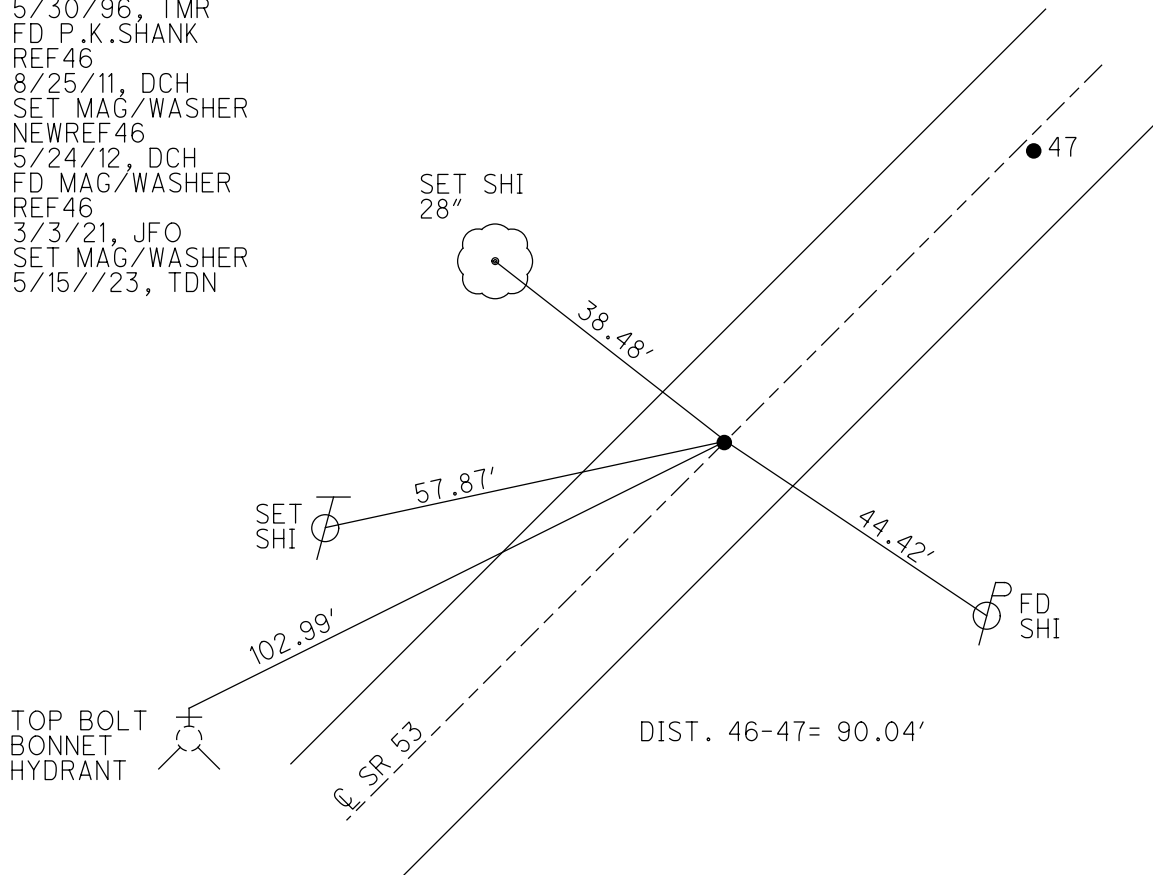
PERSONNEL \_\_\_\_\_ REFERENCE NO. 46 SHEET 4 OF 34  
 NOTES RHOADES DATE 8/22/22 ROUTE SR 53  
 H.C. NIESE WEATHER CLOUDY COUNTY OTTAWA  
 R.C. AUBLE TEMP. 73° TOWNSHIP CATAWBA  
 DWG BY RHOADES PID 102905 SECTION 25  
 T 7 N R 17 E

TYPE MONUMENT MAG/WASHER  
 ON SURFACE - ~~BELOW~~ ON  
 OFFSET 0.5' LT : ~~RT~~  
11.5' TO LT EDGE PAVEMENT  
 STATION: 734+07.91

HORZ. DATUM: NAD83 2011 GEOID: NAVD88 2018  
 GRID: NORTHING: 681633.419 EASTING: 1871934.185



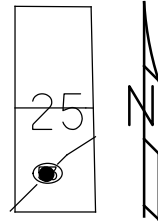
RECORD: P.C.  
 STA. 660+94.20  
 FD P.K./WASHER  
 6/8/95  
 SET P.K./WASHER  
 5/30/96, TMR  
 FD P.K.SHANK  
 REF46  
 8/25/11, DCH  
 SET MAG/WASHER  
 NEWREF46  
 5/24/12, DCH  
 FD MAG/WASHER  
 REF46  
 3/3/21, JFO  
 SET MAG/WASHER  
 5/15/23, TDN



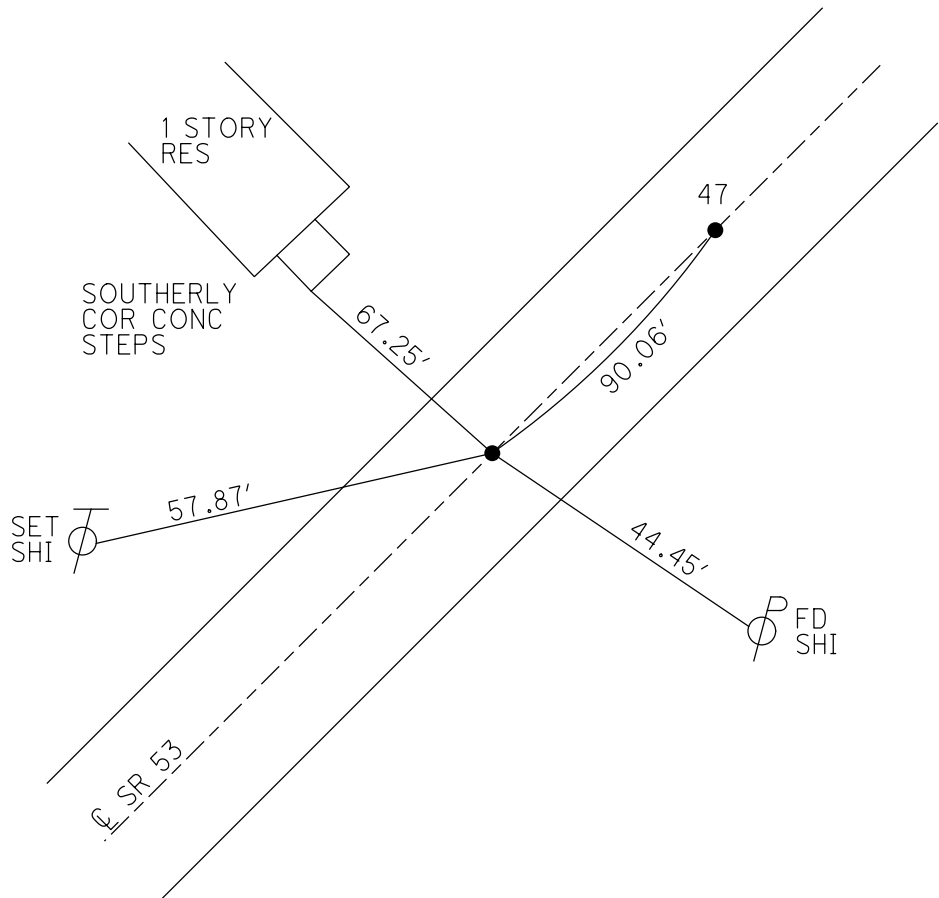
O.D.O.T. DISTRICT 2 SURVEY OFFICE (USE ONLY)

PERSONNEL	REFERENCE NO.	<u>46</u>	SHEET	<u>7</u>	OF	<u>36</u>
NOTES	HOMAN	DATE	<u>8/25/11</u>	ROUTE	<u>SR 53</u>	
H.C.	HOMAN	WEATHER	<u>SUNNY</u>	COUNTY	<u>OTTAWA</u>	
R.C.	HARBAUGH	TEMP.	<u>75°</u>	TOWNSHIP	<u>CATAWBA</u>	
				SECTION	<u>25</u>	
				T	<u>7</u>	R
				N	<u>17</u>	E

TYPE MONUMENT P.K.SHANK  
~~ON SURFACE~~ - BELOW 1.5"  
 LEFT - CL PAV'T - RIGHT ON  
11.5' TO LT EDGE PAVEMENT  
 S.L.M. 734+31.26  
 GRID: NORTHING: 681633.435    EASTING: 1871934.391



RECORD: P.C.  
 STA. 660+94.20  
 FD P.K./WASHER  
 6/8/95  
 SET P.K./WASHER  
 5/30/96, TMR  
 FD P.K.SHANK  
 GPS, REF46  
 SET MAG/WASHER  
 NEWREF46  
 5/24/12, DCH



# O.D.O.T. DISTRICT 2 SURVEY OFFICE

PERSONNEL \_\_\_\_\_

REFERENCE NO. 46-47-48

SHEET 6 OF 30

NOTES Loehrke

H.C. Rousos

DATE 6-8-95

ROUTE S.R. 53

R.C. CANTERBURY

WEATHER Cloudy

COUNTY OTTAWA

TEMP. +60

TOWNSHIP CATAWBA Island

SECTION \_\_\_\_\_

T \_\_\_\_\_ R \_\_\_\_\_

Reset

5-30-96

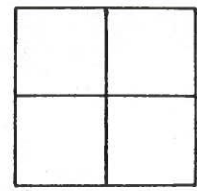
TYPE MONUMENT P.K. and WASHERS

ON SURFACE - ~~BELOW~~ Yes

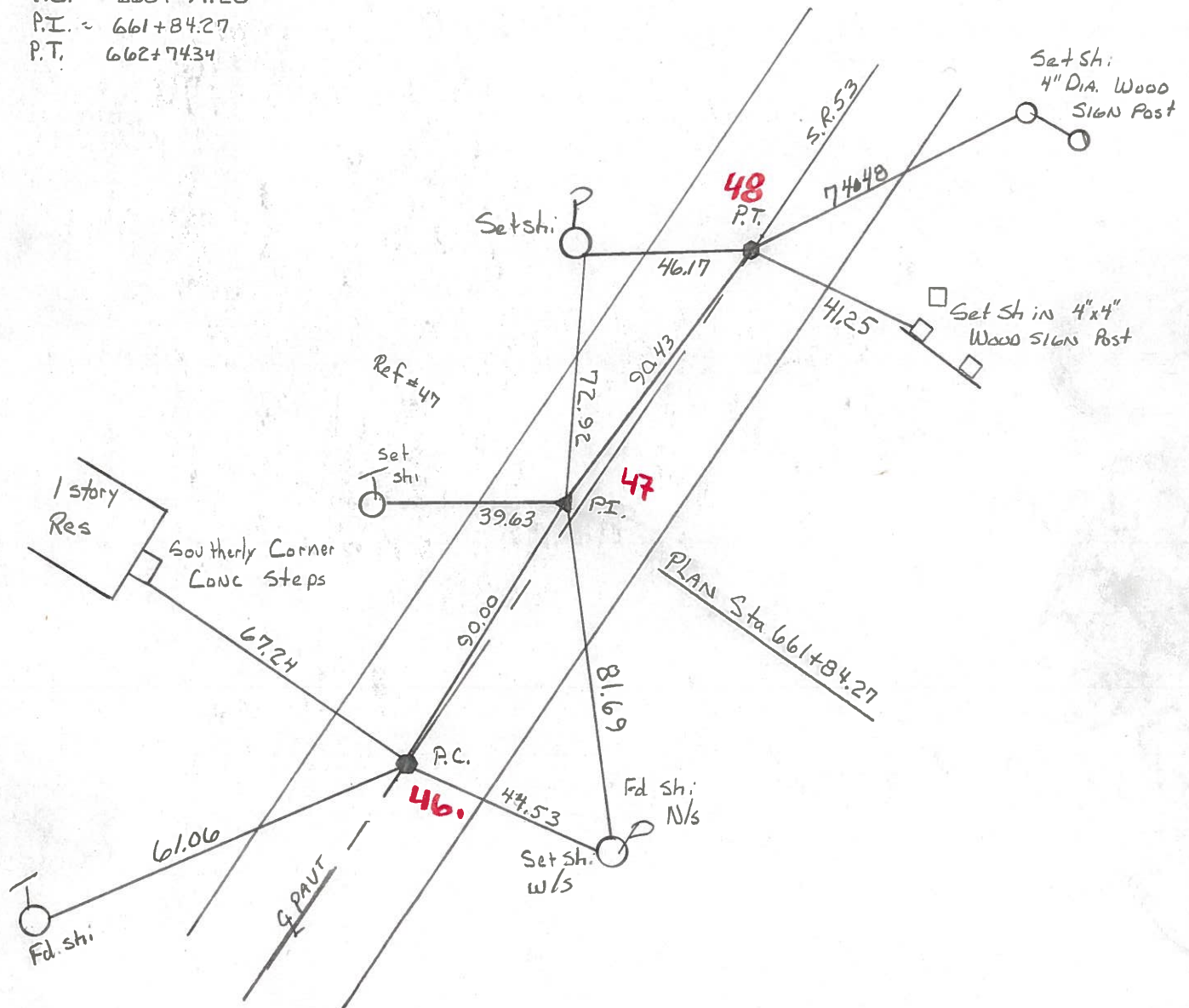
~~LEFT - & PAV'T. - RIGHT~~ Yes

11.5 TO Lt EDGE PAVEMENT

S.L.M. PC = 734+06



PLAIN STATIONING  
 P.C. = 660+94.20  
 P.I. = 661+84.27  
 P.T. = 662+74.34



PERSONNEL TITLE PERSONNEL TITLE

Schneider

COUNTY Ottawa

DATE 5-17-71

Mosser

S. R. 53

WEATHER Fair

Barbour

SEC.

TEMP. 75°

Geyman

DESCRIPTION S.R. #163 North

JOB NO.

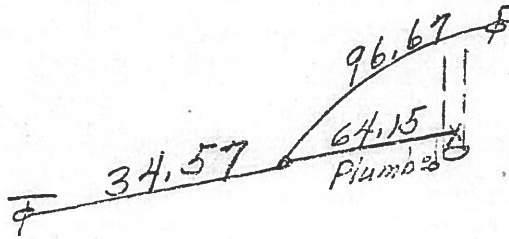
LEFT

CENTER LINE

RIGHT

17"  
3/12/84  
sunny

P.T. 662+74.34  
R.R. SPK.

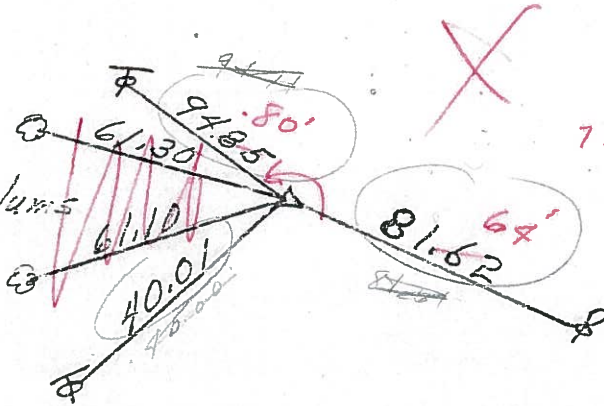


"X" on end tile

48

R/W  
P.I. 506  
661+84.27  
R.R. SPK.

2-6" Plumb



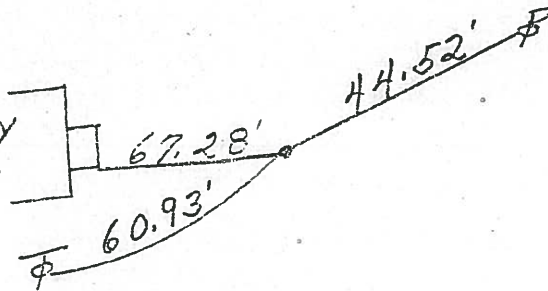
733+55± SLM

661+84.27  
71+70  
733+54.77

47

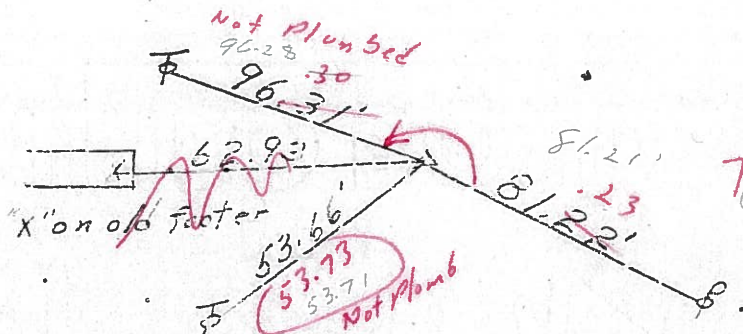
P.C. 660+94.20  
R.R. SPK.

1 story Res.



46

R/W  
P.I. 508  
646+49.87  
R.R. SPK.



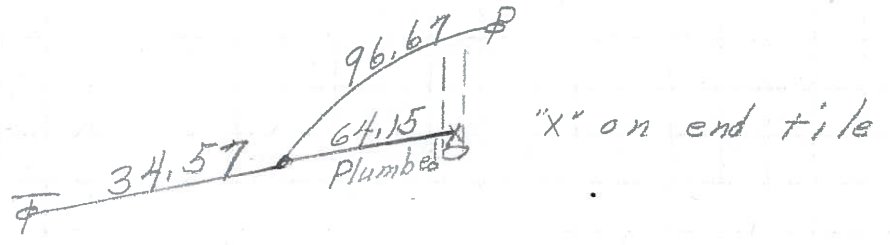
718+20± SLM  
646+50  
74+70

45

3 ties on this side  
was Plumb

PERSONNEL	TITLE	PERSONNEL	TITLE	COUNTY	DATE	WEATHER	TEMP.
Schneider				Ottawa	5-17-71	Fair	75°
Mosser				S. R. 53			
Barbour				SEC.			
Geyman							
DESCRIPTION	S.R. #163 North			LEFT	CENTER LINE	RIGHT	JOB NO.

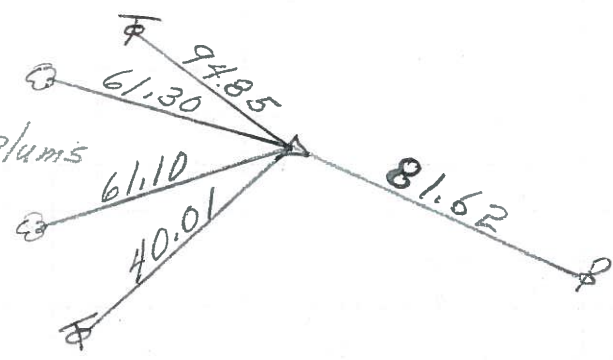
P.T. 662+71.34  
R.R. Spk.



48

P.I.  
661+84.27  
R.R. Spk.

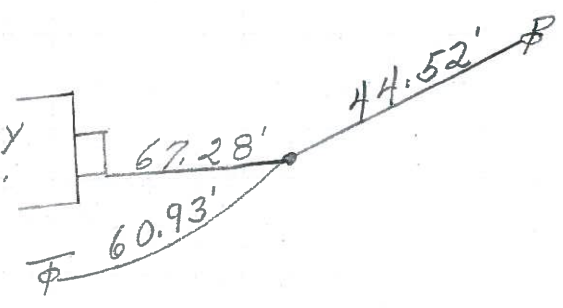
2-6" Plums



47

P.C. 660+94.20  
R.R. Spk.

1 story Res.

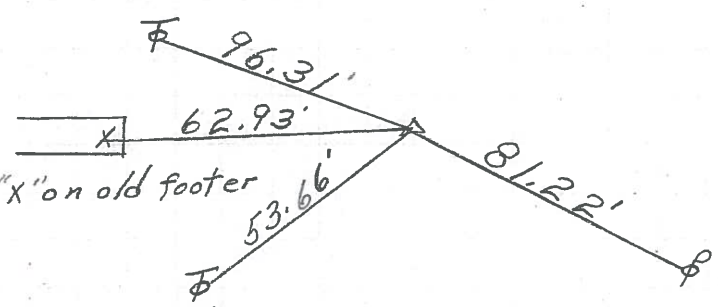


46

P.I.  
646+49.87  
R.R. Spk.

"x" on old footer

3 ties on this side



45

PERSONNEL	TITLE	PERSONNEL	TITLE
SWORDEN			
HOLCOMBE			
SAGE			
AULT			

COUNTY OTTAWA

DATE JAN. 20, 1958

S. R. #53

WEATHER Cloudy

SEC. \_\_\_\_\_

TEMP. +30°

DESCRIPTION RT TIES

JOB NO. \_\_\_\_\_

LEFT

CENTER LINE

RIGHT

