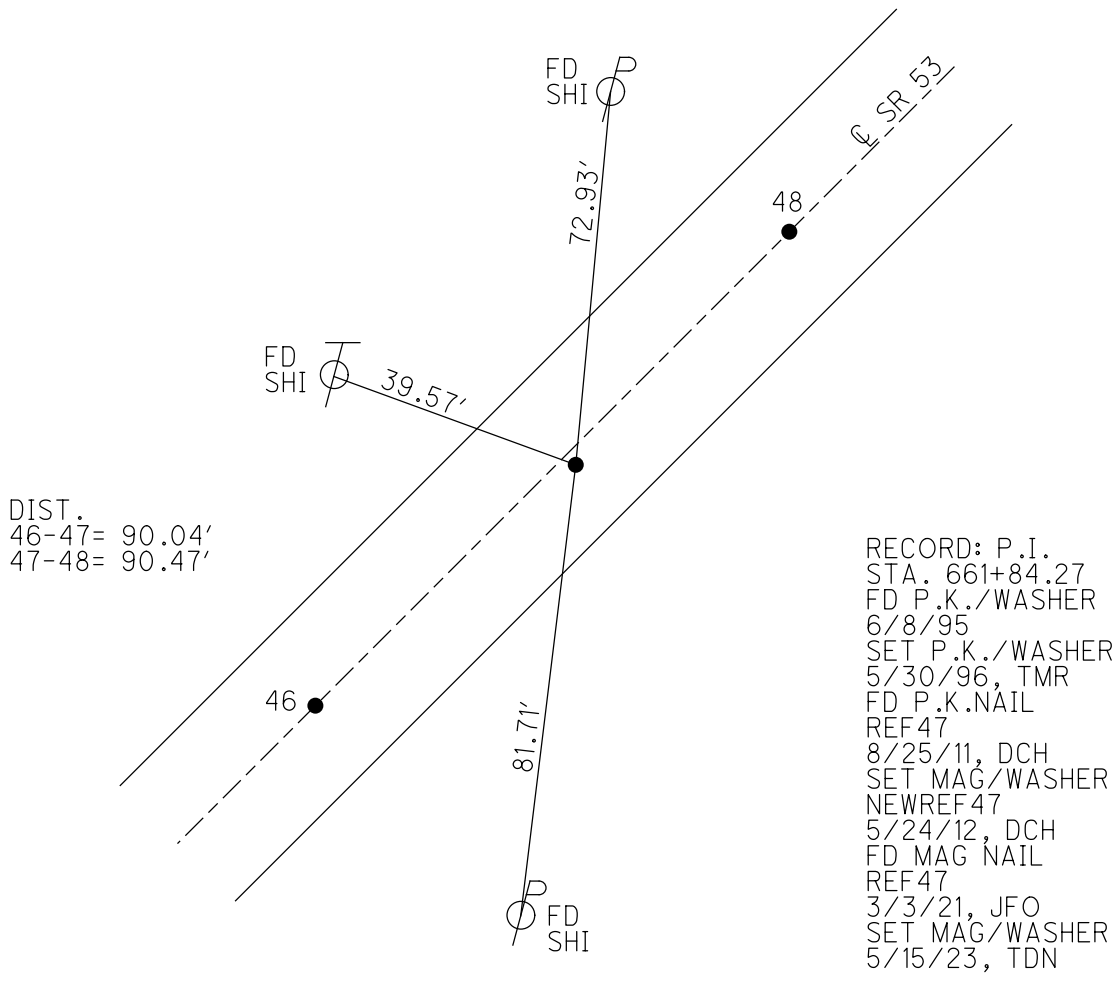
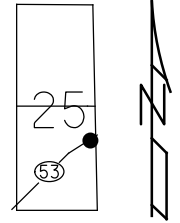


O.D.O.T. DISTRICT 2 SURVEY OFFICE (USE ONLY)

PERSONNEL _____ REFERENCE NO. 47 SHEET 5 OF 34
 NOTES RHOADES DATE 8/22/22 ROUTE SR 53
 H.C. NIESE WEATHER CLOUDY COUNTY OTTAWA
 R.C. AUBLE TEMP. 73° TOWNSHIP CATAWBA
 DWG BY RHOADES PID 102905 SECTION 25
 T 7 N R 17 E

TYPE MONUMENT MAG/WASHER
 ON SURFACE - ~~BELOW~~ ON
 OFFSET \varnothing PAVEMENT 1.5' ~~RT~~ : RT
 - TO - EDGE PAVEMENT
 STATION: 734+99.74

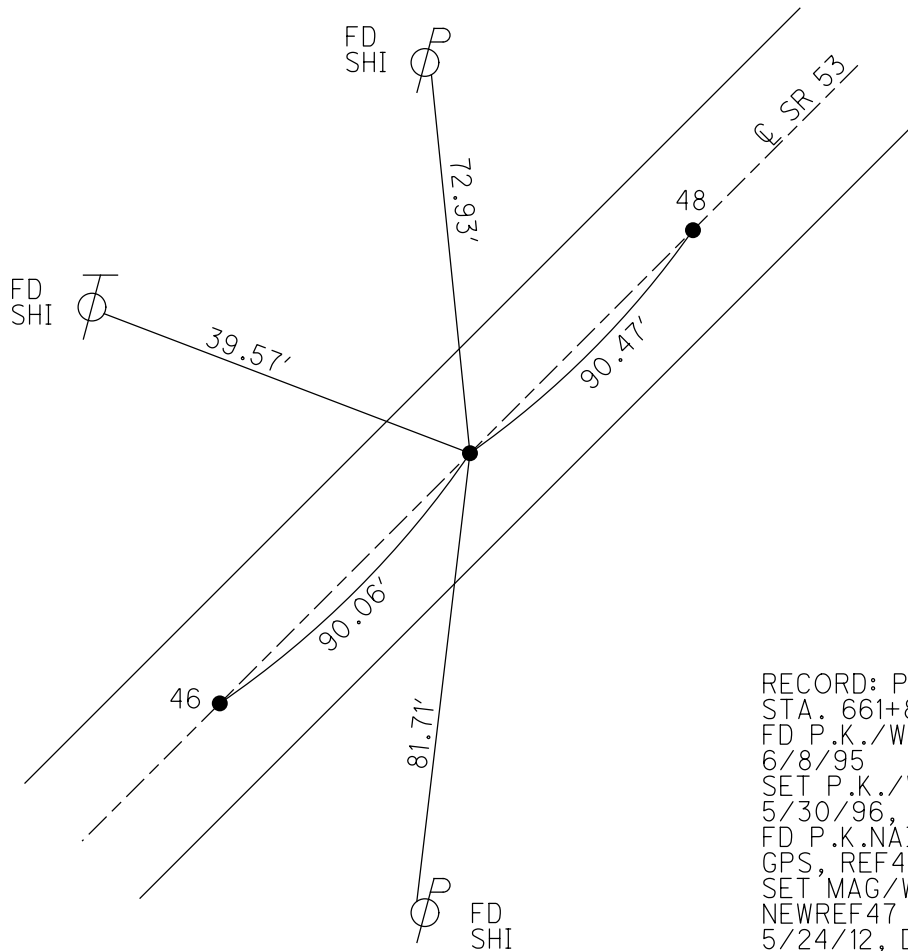
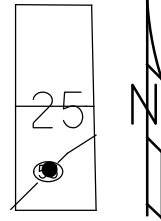
HORIZ.DATUM: NAD83 2011 GEOID: NAVD88 2018
 GRID: NORTHING: 681712.073 EASTING: 1871978.315



O.D.O.T. DISTRICT 2 SURVEY OFFICE (USE ONLY)

PERSONNEL _____ REFERENCE NO. 47 SHEET 8 OF 36
 NOTES HOMAN DATE 8/25/11 ROUTE SR 53
 H.C. HOMAN WEATHER SUNNY COUNTY OTTAWA
 R.C. HARBAUGH TEMP. 75° TOWNSHIP CATAWBA
 _____ SECTION 25
 _____ T 7 N R 17 E

TYPE MONUMENT P.K.NAIL
~~ON SURFACE~~ - BELOW 1.5"
 LEFT - ☉ PAV'T - RIGHT ON
- TO - EDGE PAVEMENT
 S.L.M. 735+21.26
 GRID: NORTHING: 681712.044 EASTING: 1871978.146



RECORD: P.I.
 STA. 661+84.27
 FD P.K./WASHER
 6/8/95
 SET P.K./WASHER
 5/30/96, TMR
 FD P.K.NAIL
 GPS, REF47
 SET MAG/WASHER
 NEWREF47
 5/24/12, DCH

O.D.O.T. DISTRICT 2 SURVEY OFFICE

PERSONNEL _____

REFERENCE NO. 46-47-48

SHEET 6 OF 30

NOTES LOEHRKE

H.C. Rousos

R.C. CANTERBURY

DATE 6-8-95

WEATHER Cloudy

TEMP. +60

ROUTE S.R. 53

COUNTY OTTAWA

TOWNSHIP CATAWBA Island

SECTION _____

T _____ R _____

Reset

5-30-96

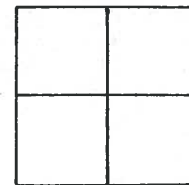
TYPE MONUMENT P.K. and WASHERS

ON SURFACE - ~~BELOW~~ Yes

~~LEFT - & PAV'T. - RIGHT~~ Yes

11.5 TO Lt EDGE PAVEMENT

S.L.M. PC = 734+06

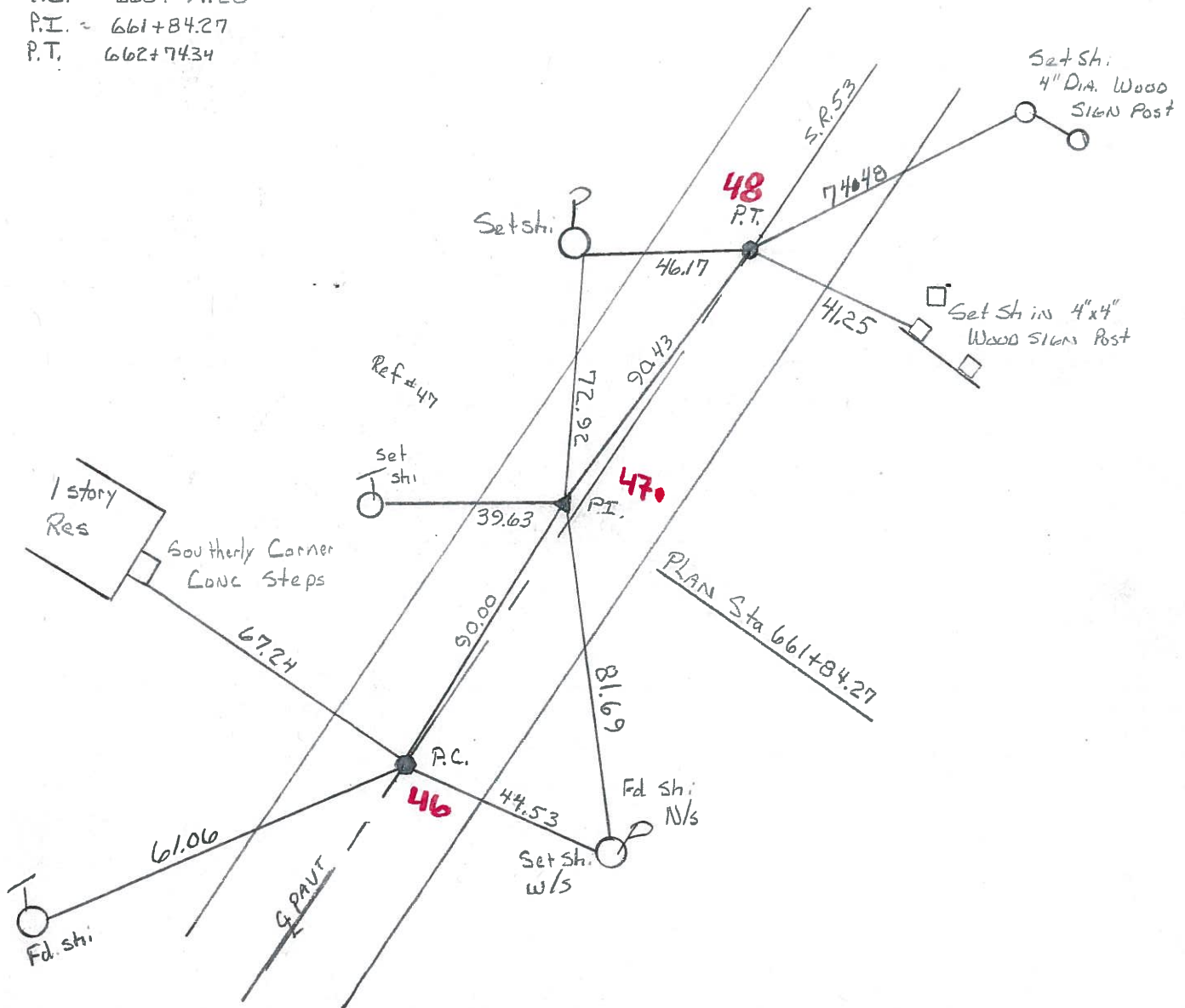


PLAIN STATIONING

P.C. = 660+94.20

P.I. = 661+84.27

P.T. = 662+74.34



Q.D.O.T. DISTRICT 2 SURVEY OFFICE

SHEET _____ OF _____

County Ottawa S.R. #53

Date 8/28/84

Township Catawba

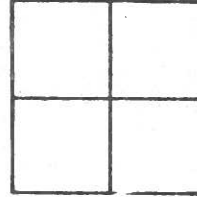
Weather overcast

Section _____

Temp. 68°

T N, R E

Personnel Cronin



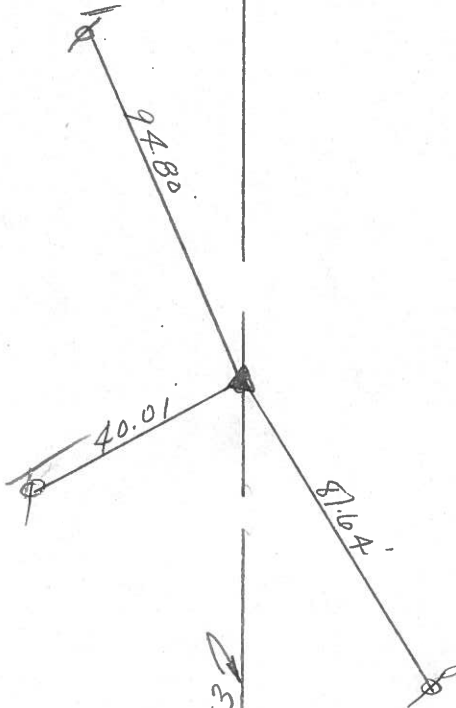
Ripple

Geyman

Barbour

PT 47

P.T. R/W
661+84.27
set P.K. & washer atop
R.R. Spike

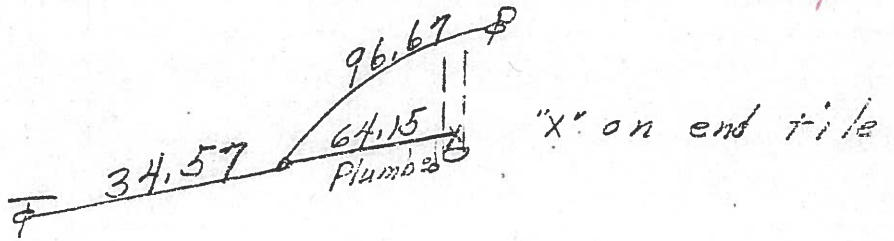


R/W S.R. #53

PERSONNEL	TITLE	PERSONNEL	TITLE	COUNTY	DATE	WEATHER	TEMP.
Schneider				Ottawa	5-17-71	Fair	75°
Mosser				S. R. 55			
Barbour							
Geyman							
DESCRIPTION S.R. #163 North							
	LEFT	CENTER LINE	RIGHT				JOB NO.

17"
3/12/84
sunny

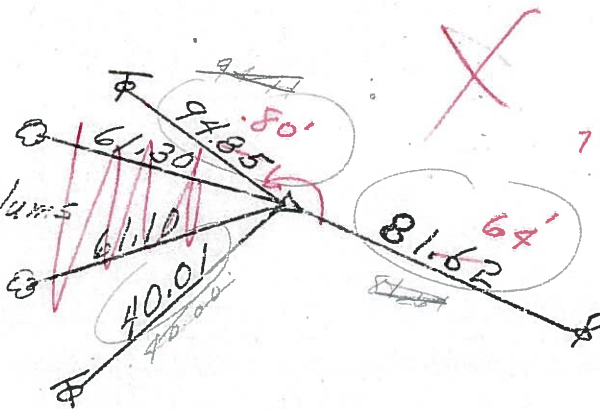
P.T. 662+74.34
R.R. spk.



48

P.I. ^{R/W} 50R
661+84.27
R.R. spk.

2-6" Plums

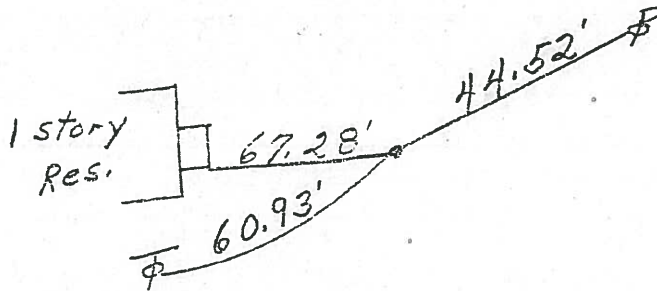


733 +55± SLM

661+84.27
71+70
733+54.27

47

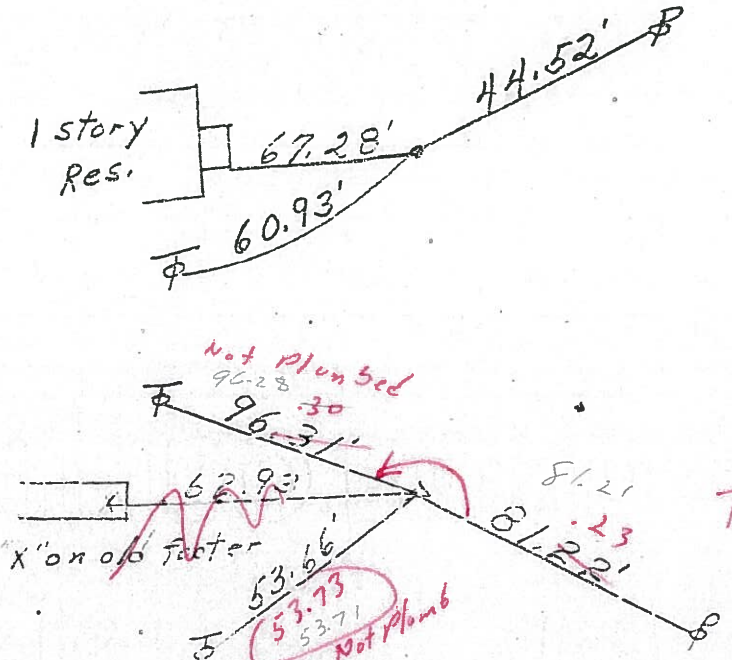
P.C. 660+94.20
R.R. spk.



1 story Res.

46

P.I. ^{R/W} 50R
646+49.87
R.R. spk.



Not Plumb

x on old factor

Not Plumb

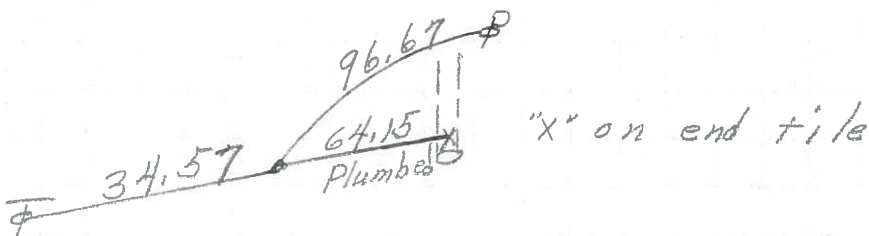
718+20± SLM
646+50
71+70

45

3 ties on this side
was Plumb

PERSONNEL	TITLE	PERSONNEL	TITLE	COUNTY	DATE	WEATHER	TEMP.
Schneider				Ottawa	5-17-71	Fair	75°
Mosser				S. R. 53			
Barbour				SEC.			
Geyman							
DESCRIPTION	S.R. #163 North						JOB NO.
	LEFT	CENTER LINE	RIGHT				

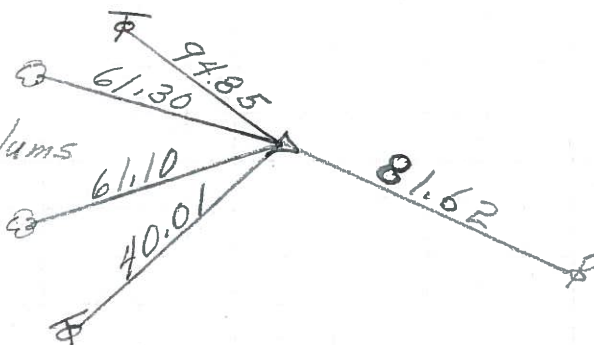
P.T. 662+74.34
R.R. Spk.



48

P.I.
661+84.27
R.R. Spk.

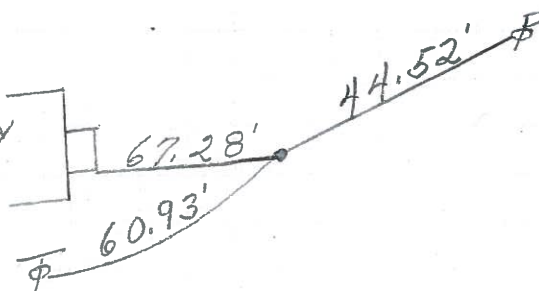
2-6" plums



47

P.C. 660+94.20
R.R. Spk.

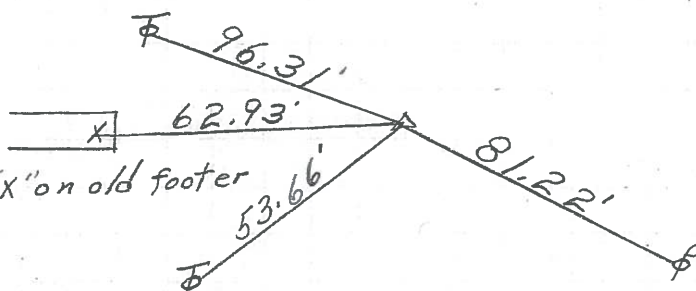
1 story Res.



46

P.I.
646+49.87
R.R. Spk.

"X" on old footer



45

3 ties on this side

PERSONNEL	TITLE	PERSONNEL	TITLE	COUNTY	DATE
<u>Schneider</u>		<u>Potts</u>		<u>Ottawa</u>	<u>8-1-68</u>
<u>Mosser</u>				S. R. <u>53</u>	WEATHER <u>Fair</u>
<u>Barbour</u>				S.R. <u>16.3 North</u>	TEMP. <u>80°</u>
<u>Redding</u>				SEC. <u>16.3 North</u>	
DESCRIPTION	<u>Ties for Control Points</u>			JOB NO.	

