

O.D.O.T. DISTRICT 2 SURVEY OFFICE (USE ONLY)

PERSONNEL _____ REFERENCE NO. 48 SHEET 6 OF 34

NOTES RHOADES DATE 8/22/22 ROUTE SR 53
 H.C. NIESE WEATHER CLOUDY COUNTY OTTAWA
 R.C. AUBLE TEMP. 73° TOWNSHIP CATAWBA
 SECTION 4-29

DWG BY RHOADES PID 102905 CONNECTICUT WESTERN RESERVE

TYPE MONUMENT MAG/WASHER

ON SURFACE - ~~BELOW~~ ON

OFFSET ☉ PAVEMENT ON LT : RT

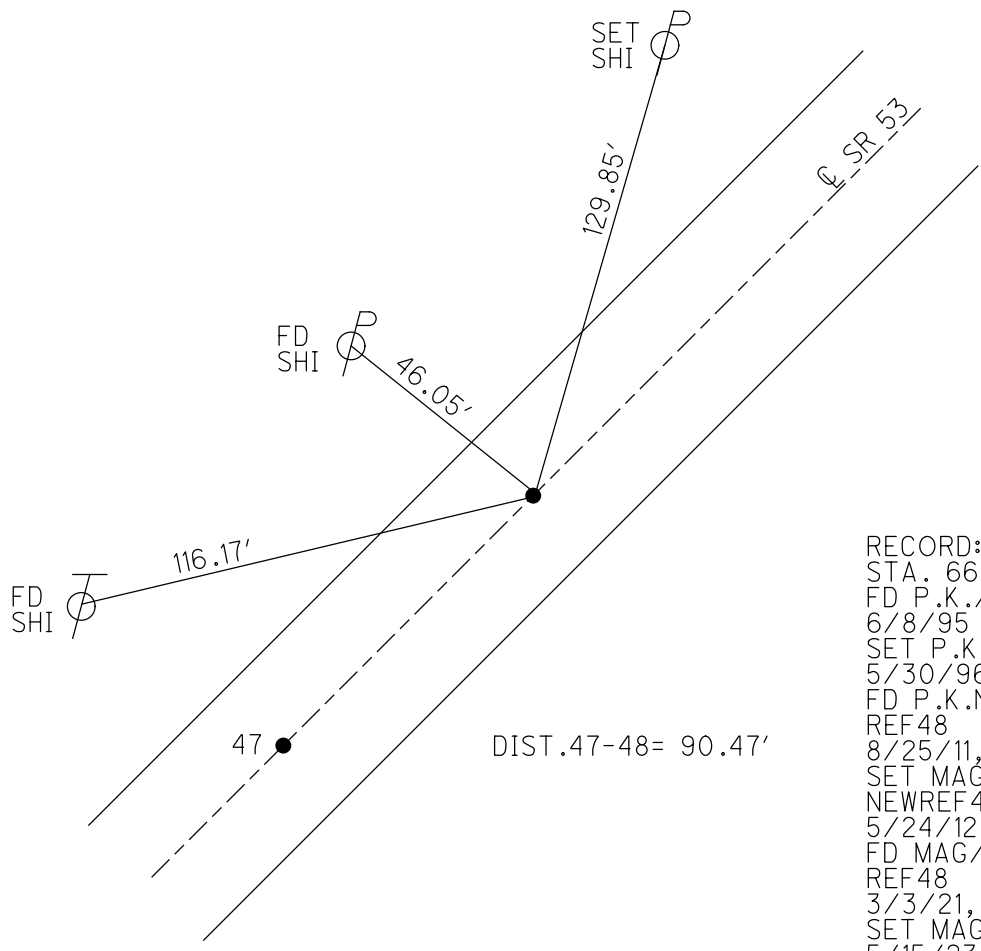
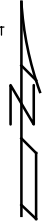
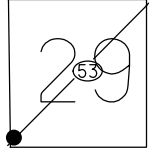
- TO - EDGE PAVEMENT

STATION: 735+91.56

HORZ.DATUM: NAD83 2011 GEOID: NAVD88 2018

GRID: NORTHING: 681790.625 EASTING: 1872022.919

NOTE:
THIS MAP IS FOR ODOT PURPOSES ONLY.
TO INDEX REFERENCE TIES, AND DOES NOT
REPRESENT TRUE LAND SUBDIVISION.



RECORD: P.T.
 STA. 662+74.34
 FD P.K./WASHER
 6/8/95
 SET P.K./WASHER
 5/30/96, TMR
 FD P.K.NAIL
 REF48
 8/25/11, DCH
 SET MAG/WASHER
 NEWREF48
 5/24/12, DCH
 FD MAG/WASHER
 REF48
 3/3/21, JFO
 SET MAG/WASHER
 5/15/23, TDN

O.D.O.T. DISTRICT 2 SURVEY OFFICE (USE ONLY)

PERSONNEL _____ REFERENCE NO. 48 SHEET 9 OF 36

NOTES HOMAN DATE 8/25/11 ROUTE SR 53

H.C. HOMAN WEATHER SUNNY COUNTY OTTAWA

R.C. HARBAUGH TEMP. 75° TOWNSHIP CATAWBA

SECTION 25

T 7 N R 17 E

TYPE MONUMENT P.K.NAIL

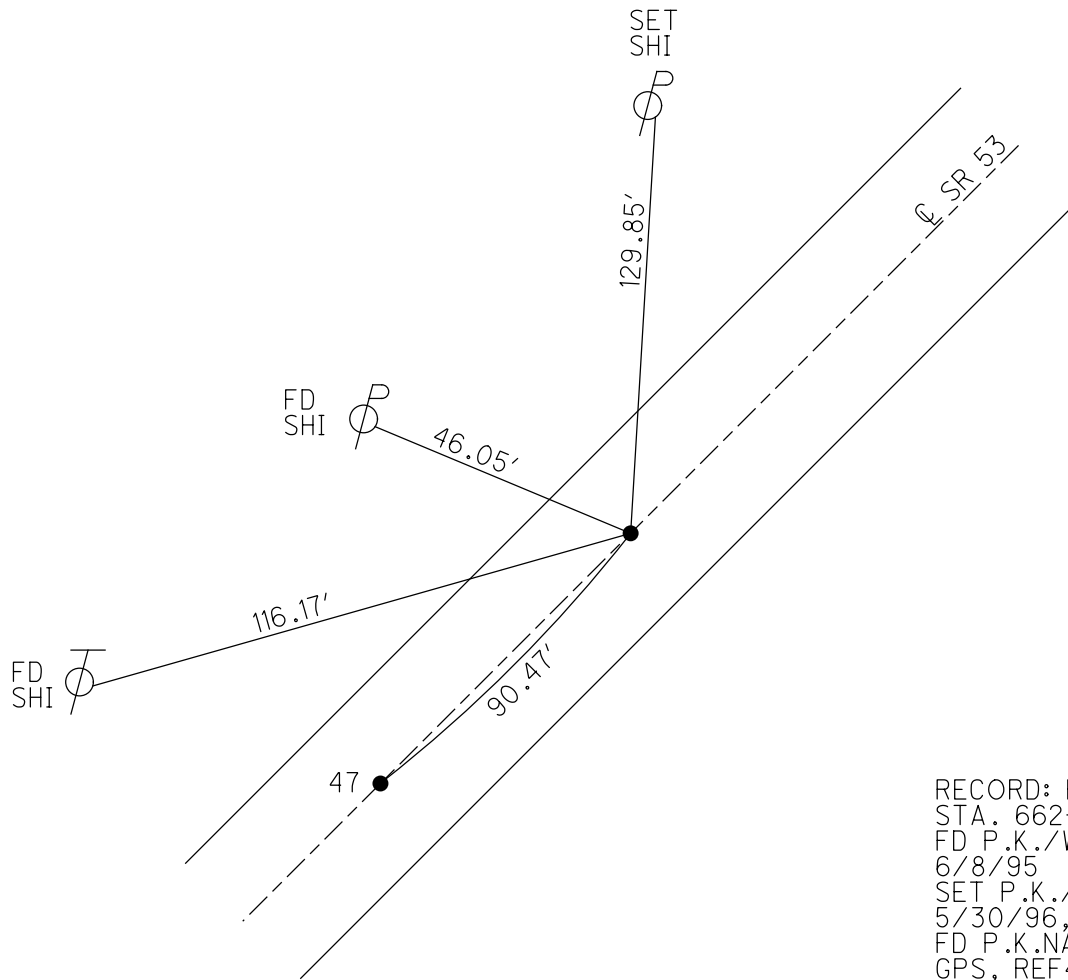
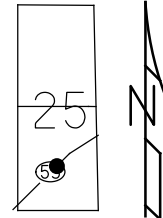
ON SURFACE - ~~BELOW~~ ON

LEFT - Q PAV'T - RIGHT ON

- TO - EDGE PAVEMENT

S.L.M. 736+11.26

GRID: NORTHING: 681790.662 EASTING: 1872022.800



RECORD: P.T.
 STA. 662+74.34
 FD P.K./WASHER
 6/8/95
 SET P.K./WASHER
 5/30/96, TMR
 FD P.K.NAIL
 GPS, REF48
 SET MAG/WASHER
 NEWREF48
 5/24/12, DCH

O.D.O.T. DISTRICT 2 SURVEY OFFICE

PERSONNEL

REFERENCE NO. 46-47-48

SHEET 6 OF 30

NOTES Loehrke

H.C. Rousos

R.C. CANTERBURY

DATE 6-8-95

WEATHER CLoudy

TEMP. +60

ROUTE S.R. 53

COUNTY OTTAWA

TOWNSHIP CATAWBA Island

SECTION _____

T _____ R _____

Reset

5-30-96

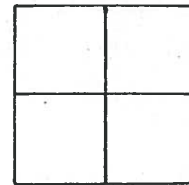
TYPE MONUMENT P.K. and WASHERS

ON SURFACE - ~~BELOW~~ Yes

~~LEFT-C~~ PAV'T. - ~~RIGHT~~ Yes

11.5 TO Lt EDGE PAVEMENT

S.L.M. PC = 734+06

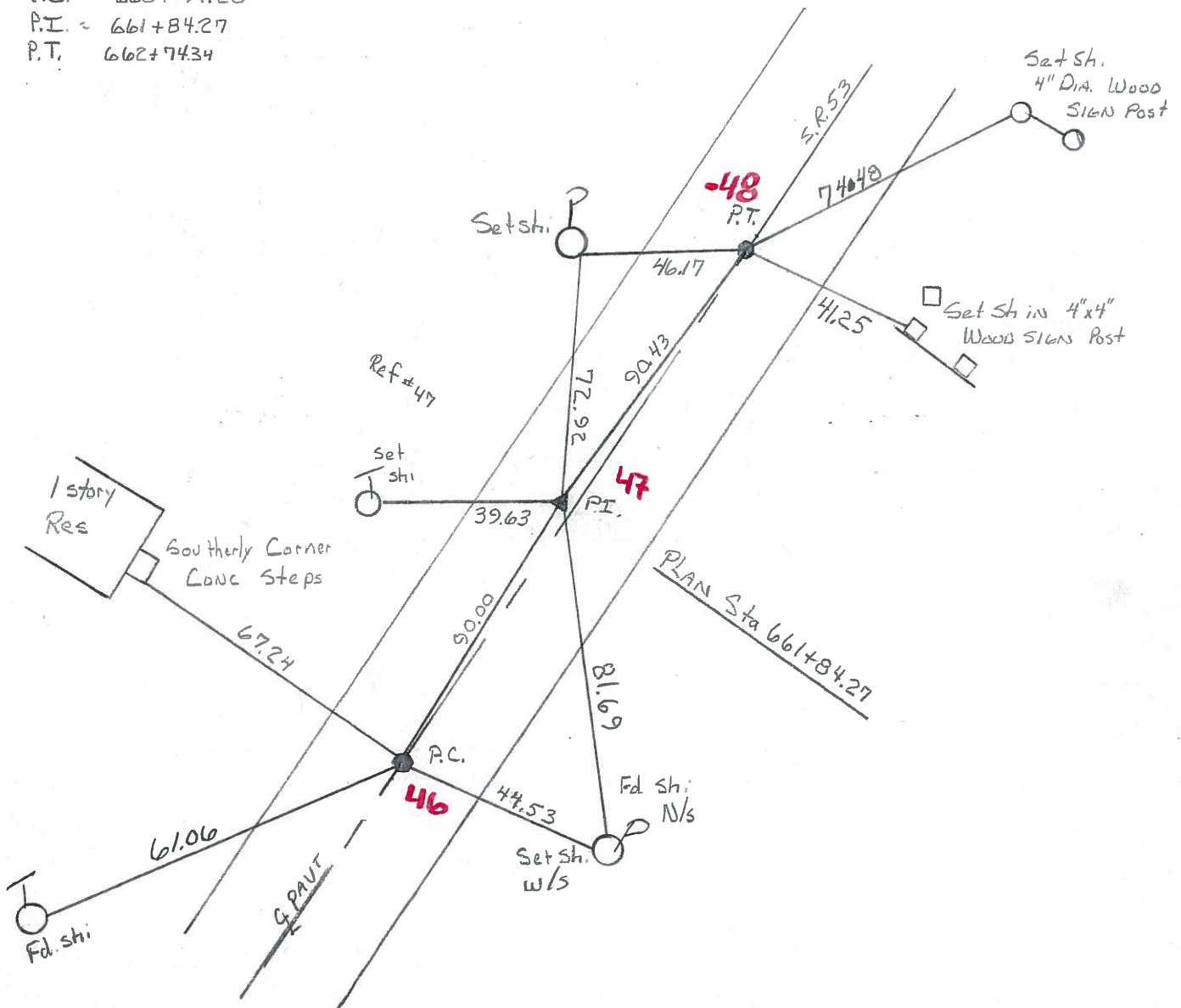


PLAN STATIONING

P.C. = 660+94.20

P.I. = 661+84.27

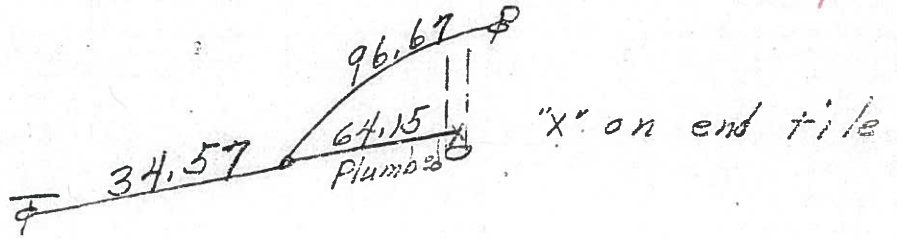
P.T. = 662+74.34



PERSONNEL	TITLE	PERSONNEL	TITLE	COUNTY	DATE
Schneider				Ottawa	5-17-71
Mosser				S. R. 53	WEATHER Fair
Barbour				SEC.	TEMP. 75°
Geyman					
DESCRIPTION S.R. #163 North				JOB NO.	
	LEFT	CENTER LINE	RIGHT		

17"
3/12/84
sunny

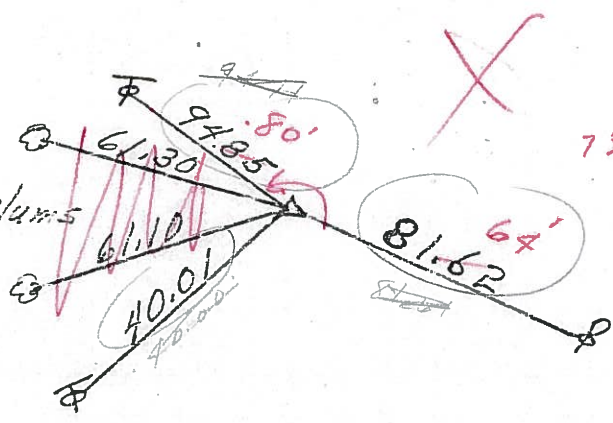
P.T. 662+74.34
R.R. spk.



48

P.I. R/W
506
661+84.27
R.R. spk.

2-6" Plums

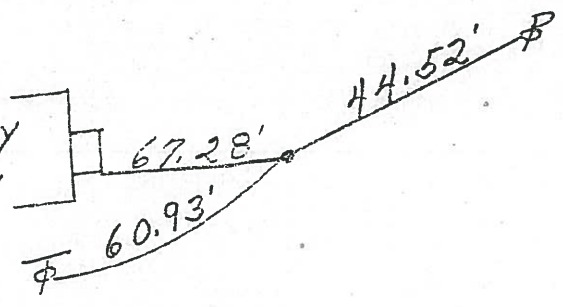


661+84.27
71+70
733+54.27

47

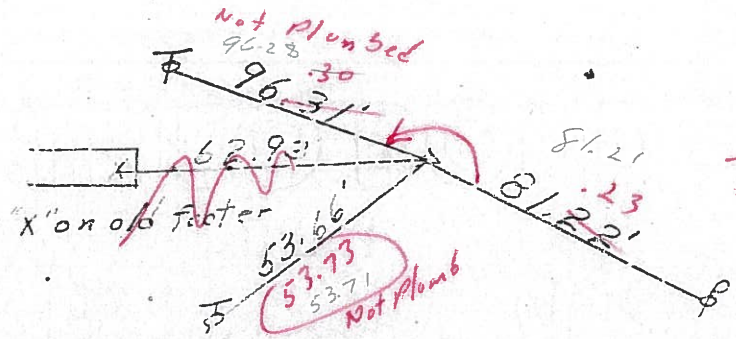
P.C. 660+94.20
R.R. spk.

1 story Res.



46

P.I. R/W
50R
646+49.87
R.R. spk.



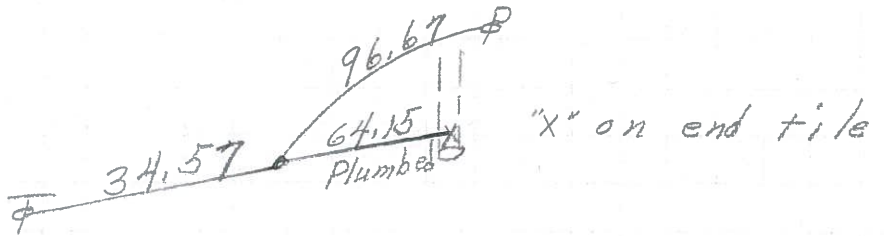
718+20 + SLM
646+50
71+70

45

3 ties on this side
was Plumb

PERSONNEL	TITLE	PERSONNEL	TITLE	COUNTY	DATE	WEATHER	TEMP.
<u>Schneider</u>				<u>Ottawa</u>	<u>5-17-71</u>	<u>Fair</u>	<u>75°</u>
<u>Mosser</u>				<u>S. R. 53</u>			
<u>Barbour</u>							
<u>Geyman</u>							
DESCRIPTION	<u>S.R. #163 North</u>			SEC.			
	LEFT	CENTER LINE	RIGHT				JOB NO.

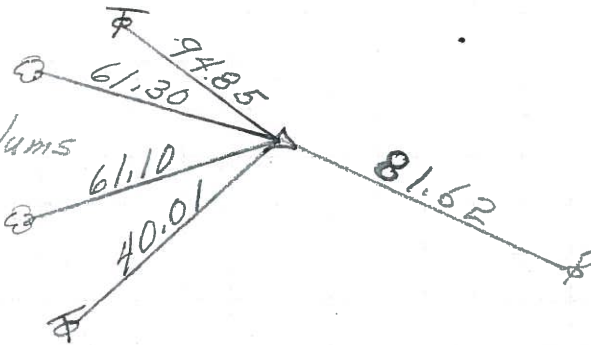
P.T. 662+74.34
R.R. SPK.



48

P.I.
661+84.27
R.R. SPK.

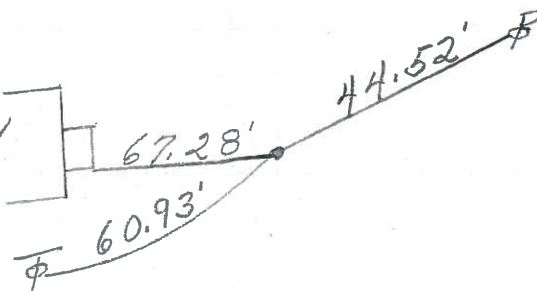
2-6" plums



47

P.C. 660+94.20
R.R. SPK.

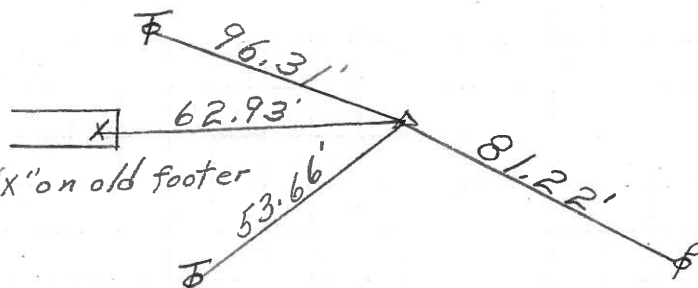
1-story Res.



46

P.I.
646+49.87
R.R. SPK.

"x" on old footer



45

3 ties on this side