

O.D.O.T. DISTRICT 2 SURVEY OFFICE (USE ONLY)

PERSONNEL

REFERENCE NO. 49

SHEET 7 OF 34

NOTES RHOADES  
 H.C. NIESE  
 R.C. AUBLE

DATE 8/24/22  
 WEATHER SUNNY  
 TEMP. 69°

ROUTE SR 53  
 COUNTY OTTAWA  
 TOWNSHIP CATAWBA  
 SECTION 4-29

DWG BY RHOADES PID 102905

CONNECTICUT WESTERN RESERVE

TYPE MONUMENT MAG/WASHER

ON SURFACE - ~~BELOW~~ ON

OFFSET Q PAVEMENT ON LT : RT  
12.5' TO LT EDGE PAVEMENT

STATION: 738+85.6

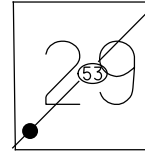
HORZ. DATUM: NAD83 2011

GEOID: NAVD88 2018

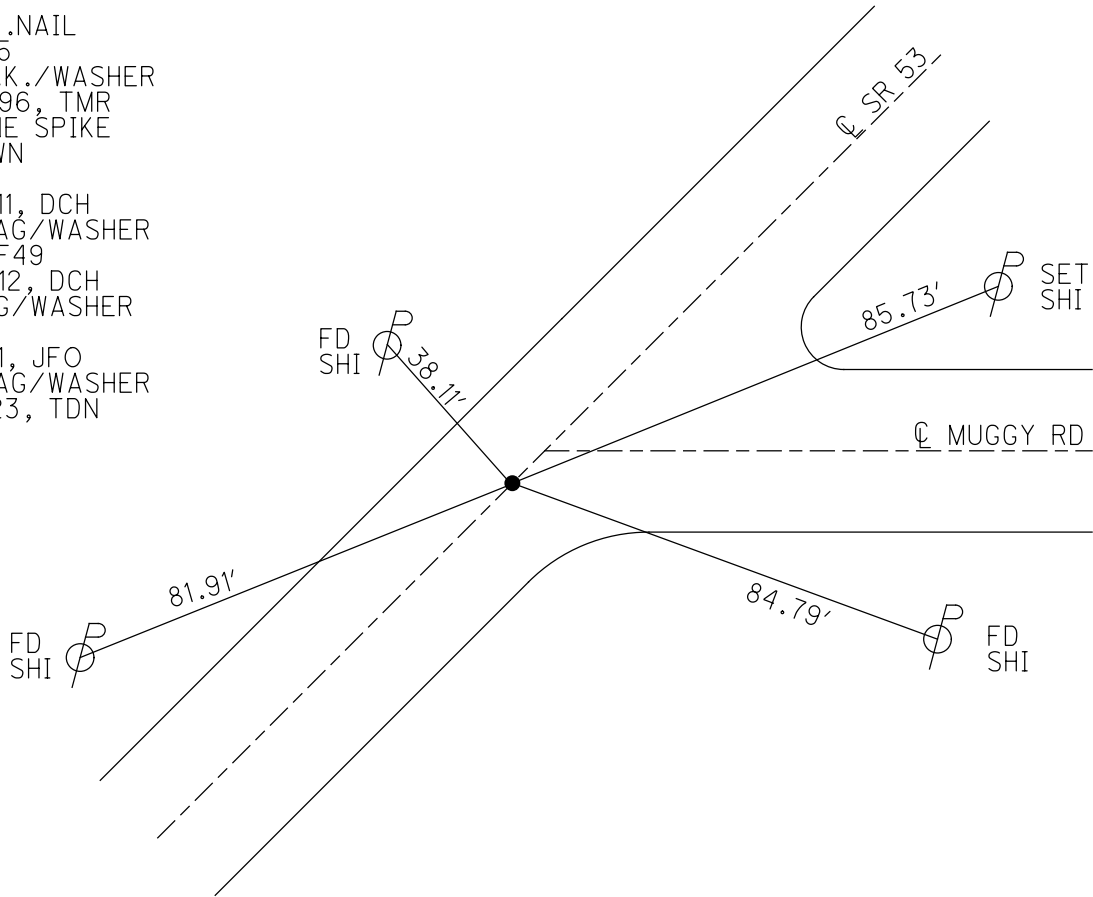
GRID: NORTHING: 682047.282

EASTING: 1872169.334

NOTE:  
 THIS MAP IS FOR ODOT PURPOSES ONLY  
 TO INDEX REFERENCE TIES, AND DOES NOT  
 REPRESENT TRUE LAND SUBDIVISION.



RECORD: P.O.T.  
 STA. 662+74.34  
 SET P.K./WASHER  
 ATOP MINE SPIKE  
 1971  
 FD P.K.NAIL  
 6/8/95  
 SET P.K./WASHER  
 5/30/96, TMR  
 FD MINE SPIKE  
 4" DOWN  
 REF49  
 8/25/11, DCH  
 SET MAG/WASHER  
 NEWREF49  
 7/30/12, DCH  
 FD MAG/WASHER  
 REF49  
 3/3/21, JFO  
 SET MAG/WASHER  
 5/15/23, TDN



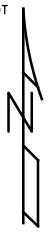
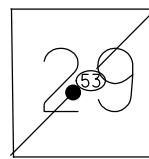
O.D.O.T. DISTRICT 2 SURVEY OFFICE (USE ONLY)

PERSONNEL \_\_\_\_\_ REFERENCE NO. 49 SHEET 10 OF 36

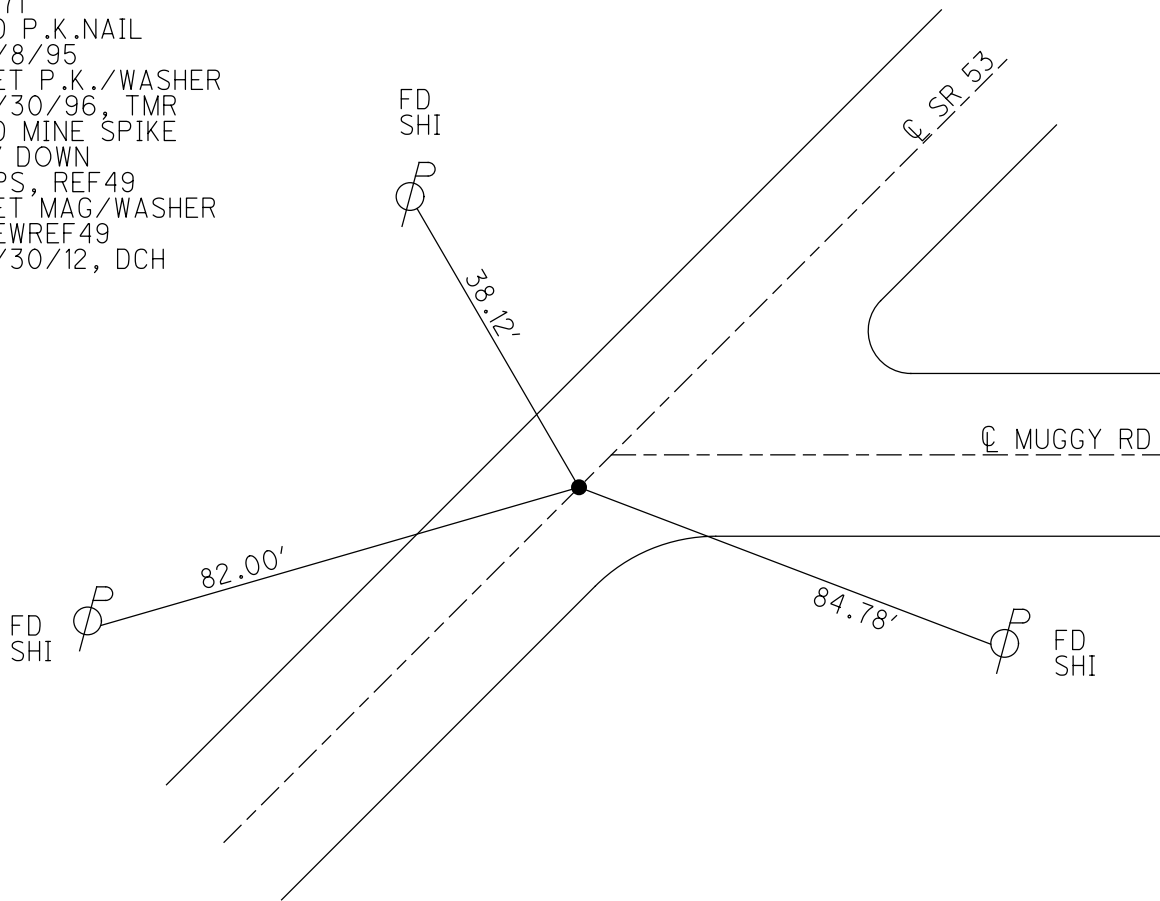
NOTES HOMAN DATE 8/25/11 ROUTE SR 53  
 H.C. HOMAN WEATHER SUNNY COUNTY OTTAWA  
 R.C. HARBAUGH TEMP. 75° TOWNSHIP CATAWBA ISL  
 \_\_\_\_\_ SECTION 4-29

TYPE MONUMENT MINE SPIKE  
~~ON SURFACE~~ - BELOW 4"  
 LEFT - ☉ PAV'T - RIGHT ON  
12.5' TO LT EDGE PAVEMENT  
 S.L.M. 739+07.18  
 GRID: NORTHING: 682047.355 EASTING: 1872169.209

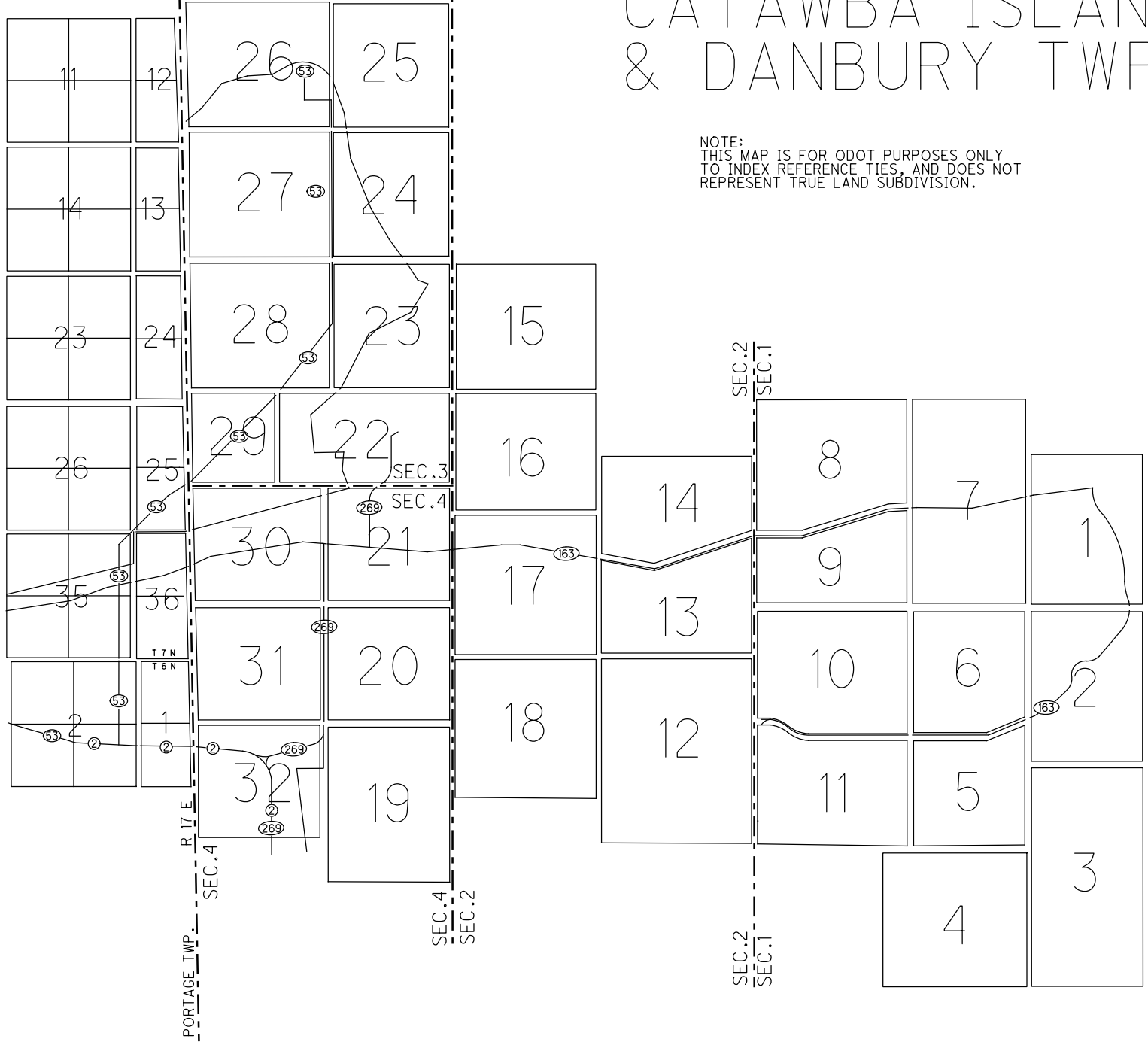
NOTE:  
THIS MAP IS FOR ODOT PURPOSES ONLY  
TO INDEX REFERENCE TIES, AND DOES NOT  
REPRESENT TRUE LAND SUBDIVISION.



RECORD: P.O.T.  
 STA. 662+74.34  
 SET P.K./WASHER  
 ATOP MINE SPIKE  
 1971  
 FD P.K.NAIL  
 6/8/95  
 SET P.K./WASHER  
 5/30/96, TMR  
 FD MINE SPIKE  
 4" DOWN  
 GPS, REF49  
 SET MAG/WASHER  
 NEWREF49  
 7/30/12, DCH



CONNECTICUT WESTERN RESERVE LINE



# CATAWBA ISLAND & DANBURY TWP

NOTE:  
THIS MAP IS FOR ODOT PURPOSES ONLY  
TO INDEX REFERENCE TIES, AND DOES NOT  
REPRESENT TRUE LAND SUBDIVISION.

# O.D.O.T. DISTRICT 2 SURVEY OFFICE

PERSONNEL \_\_\_\_\_

REFERENCE NO. 49

SHEET 7 OF 30

NOTES Rousas

H.C. CANTERBURY

DATE 6-8-95

ROUTE SR. 53

R.C. Rousas

WEATHER CLOUDY

COUNTY OTTAWA

TEMP. 62°

TOWNSHIP CATAWBA

SECTION \_\_\_\_\_

T \_\_\_\_\_ R \_\_\_\_\_

Reset P.K./WASHER  
5-30-96

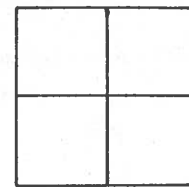
TYPE MONUMENT P.K.

ON SURFACE ~~BELOW~~ ON SURFACE

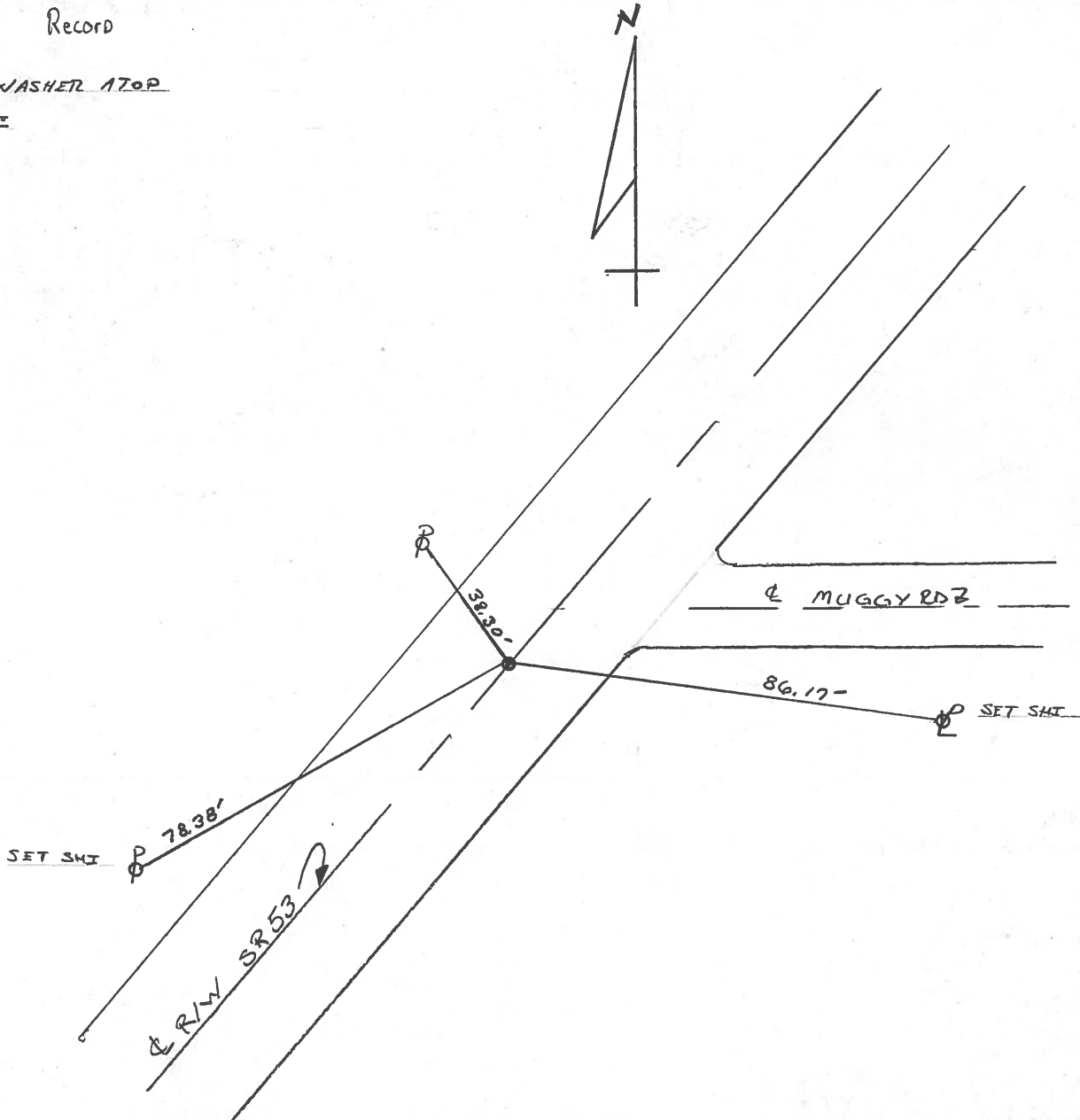
~~LEFT - C~~ PAV'T. - RIGHT ON C

12.5 TO LT. EDGE PAVEMENT

S.L.M. 738+79



P.O.T. Record  
665+66  
SET PK# WASHER ATOP  
MINE SPIKE



County Ottawa S.R. #53

Date 8/28/84

Township Catawba

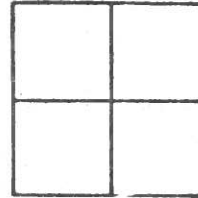
Weather sunny

Section \_\_\_\_\_

Temp. 68°

T N, R E

Personnel Cronin



Ripple

Geyman

Barbour

PT 49

P.O.T.  
665+66  
set P.K. & washer atop  
mine spike

38.31

83.00

77.06

Mugger Rd

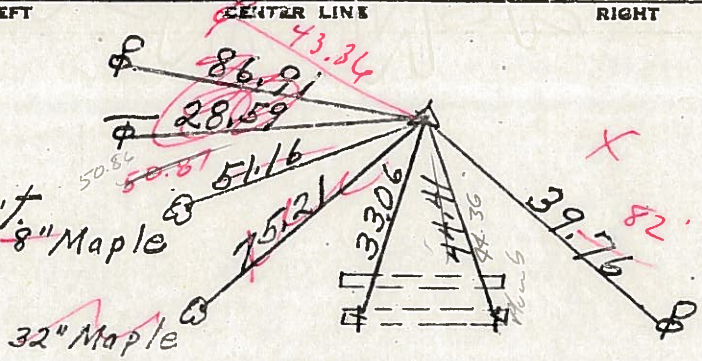
S.R. #53



PERSONNEL	TITLE	PERSONNEL	TITLE	COUNTY	DATE
Schneider				Ottawa	5-18-71
Mosser				S. R. 53	WEATHER Fair
Barbour				SEC.	TEMP. 75°
Geyman				DESCRIPTION S.R. # 163 North	JOB NO.

P.I. *R/W*  
 708+66.03  
 R.R. spk.  
 on Lt. edge Parmit  
 25" 8" Maple

52

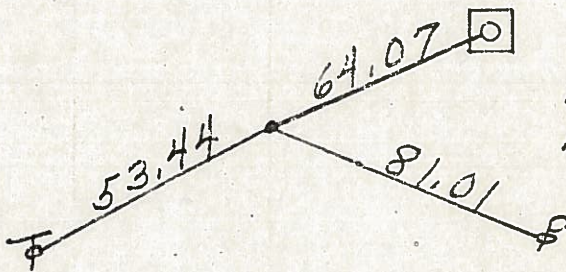


3/12/84  
 12°  
 sunny  
 $708+66.03$   
 $71+70$   
 $\hline 780+36.03$

"X" on conc. tile

T.S. 706+12.47  
 R.R. spk.

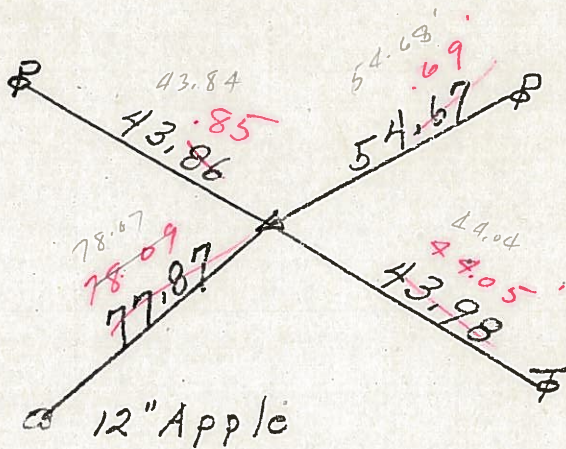
51



Parcel Post  
 Mobile Home sign  
 1.6' up from conc. base

P.I. *R/W*  
 692+76.53  
 R.R. spk.

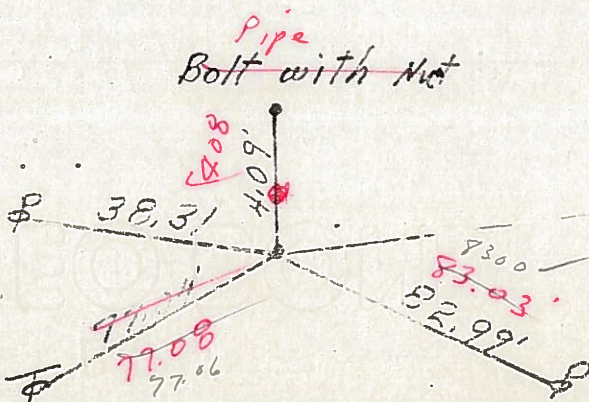
50



$692+76.53$   
 $71+70$   
 $\hline 764+46.53$

665+66  
 Mine Small R.R. spk.  
 & S.R. *R/W*

49



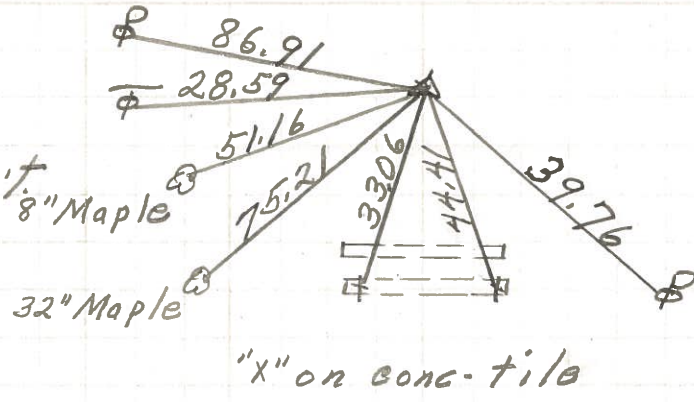
$665+66$   
 $71+70$   
 $\hline 737+36$

Twp. 80. East.

PERSONNEL	TITLE	PERSONNEL	TITLE	COUNTY	DATE
Schneider				Ottawa	5-18-71
Mosser				S. R. 53	WEATHER Fair
Barbour				SEC.	TEMP. 75°
Geyman					
DESCRIPTION				S.R. #163 North	JOB NO.
LEFT		CENTER LINE		RIGHT	

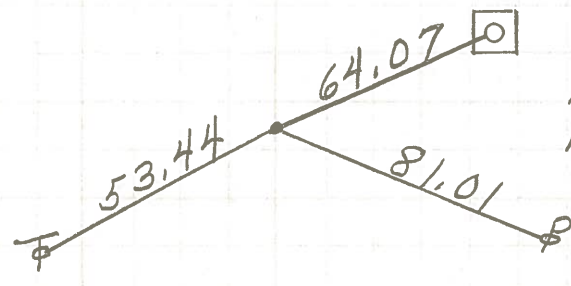
P.I.  
708+66.03  
R.R. Spk.  
on Lt. edge Parvmit

(52)



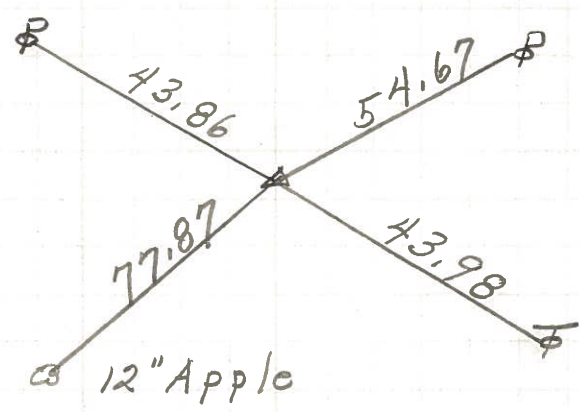
T.S. 706+12.47  
R.R. Spk.

(51)-A



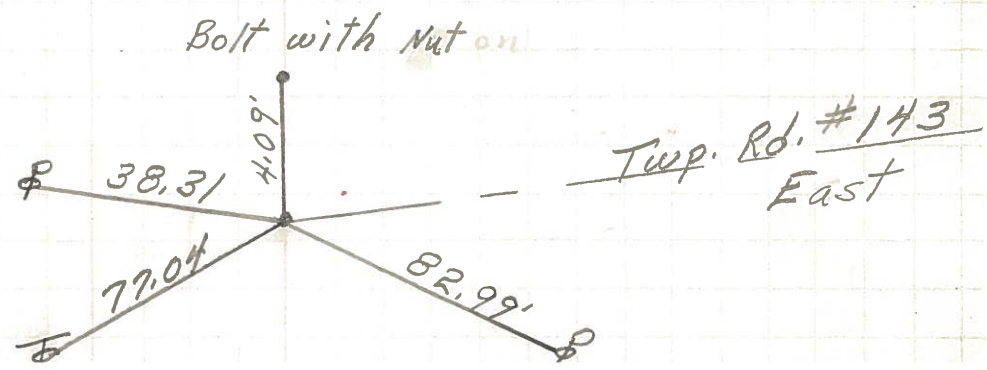
P.I.  
692+76.53  
R.R. Spk.

(50)



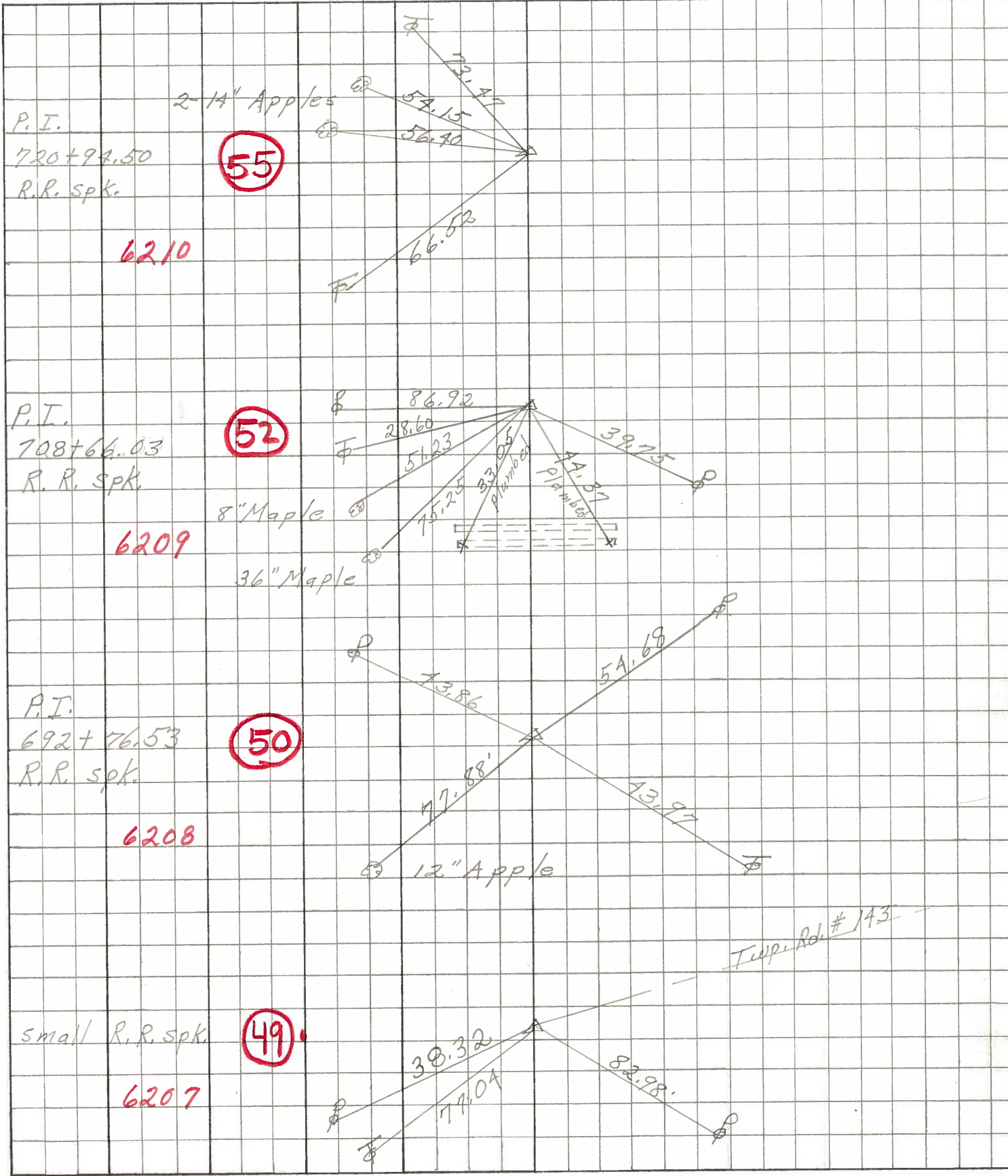
665+66  
Small R.R. Spk.

(49)



PERSONNEL	TITLE	PERSONNEL	TITLE	COUNTY	DATE
Schneider		Potts		Ottawa	8-2-68
Mosser				S. R. 53	WEATHER Fair
Barbour				SEC. S.R. #163 North	TEMP. 75°
Redding					

DESCRIPTION Ties for Control Points JOB NO. \_\_\_\_\_





PERSONNEL	TITLE	PERSONNEL	TITLE
<u>SWORDEN</u>	_____	_____	_____
<u>HOLCOMBE</u>	_____	_____	_____
<u>SAGE</u>	_____	_____	_____
<u>AULT</u>	_____	_____	_____

COUNTY OTTAWA

DATE JAN. 20, 1958

S. R. #53

WEATHER Cloudy

SEC. \_\_\_\_\_

TEMP. 30°

DESCRIPTION R TIES

JOB NO. \_\_\_\_\_

