

O.D.O.T. DISTRICT 2 SURVEY OFFICE (USE ONLY)

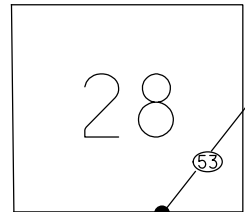
PERSONNEL _____ REFERENCE NO. 51 SHEET 9 OF 34
 NOTES RHOADES DATE 8/24/22 ROUTE SR 53
 H.C. NIESE WEATHER SUNNY COUNTY OTTAWA
 R.C. AUBLE TEMP. 78° TOWNSHIP CATAWBA
 SECTION 4-28

DWG BY RHOADES PID 102905

CONNECTICUT WESTERN RESERVE

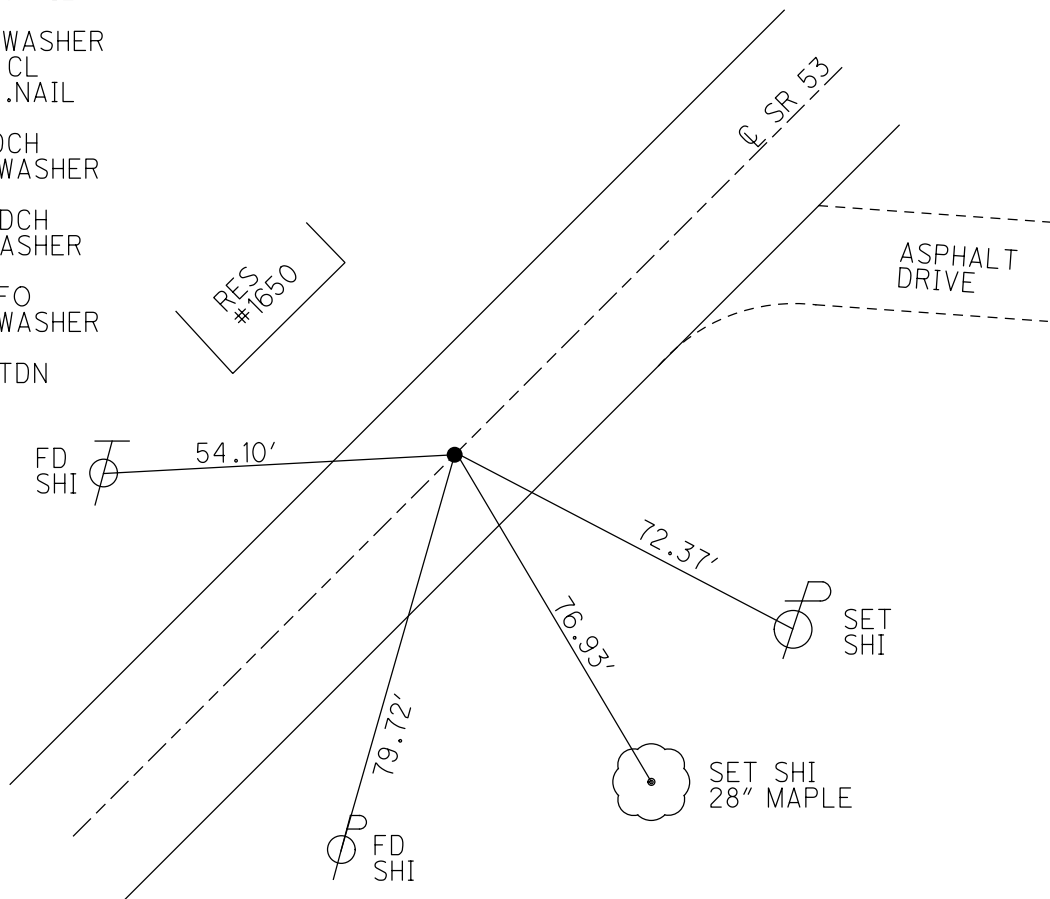
NOTE- THIS MAP IS FOR ODOT PURPOSES ONLY TO INDEX REFERENCE TIES, AND DOES NOT REPRESENT TRUE LAND SUBDIVISION.

TYPE MONUMENT MAG/WASHER
 ON SURFACE - ~~BELOW~~ ON
 OFFSET Q PAVEMENT ON LT : RT
11.4' TO RT EDGE PAVEMENT
 STATION: 779+27.64



HORZ. DATUM: NAD83 2011 GEOID: NAVD88 2018
 GRID: NORTHING: 685556.393 EASTING: 1874175.373

RECORD: T.S.
 STA. 706+12.47
 FD R.R.SPIKE, 1971
 FD SM.P.K.NAIL
 6/8/95
 SET P.K./WASHER
 5/30/96, CL
 FD SM.P.K.NAIL
 REF51
 8/25/11, DCH
 SET MAG/WASHER
 NEWREF51
 7/30/12, DCH
 FD MAG/WASHER
 REF51
 3/3/21, JFO
 SET MAG/WASHER
 REF51
 5/15/23, TDN

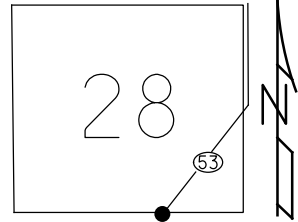


O.D.O.T. DISTRICT 2 SURVEY (OFFICE USE ONLY)

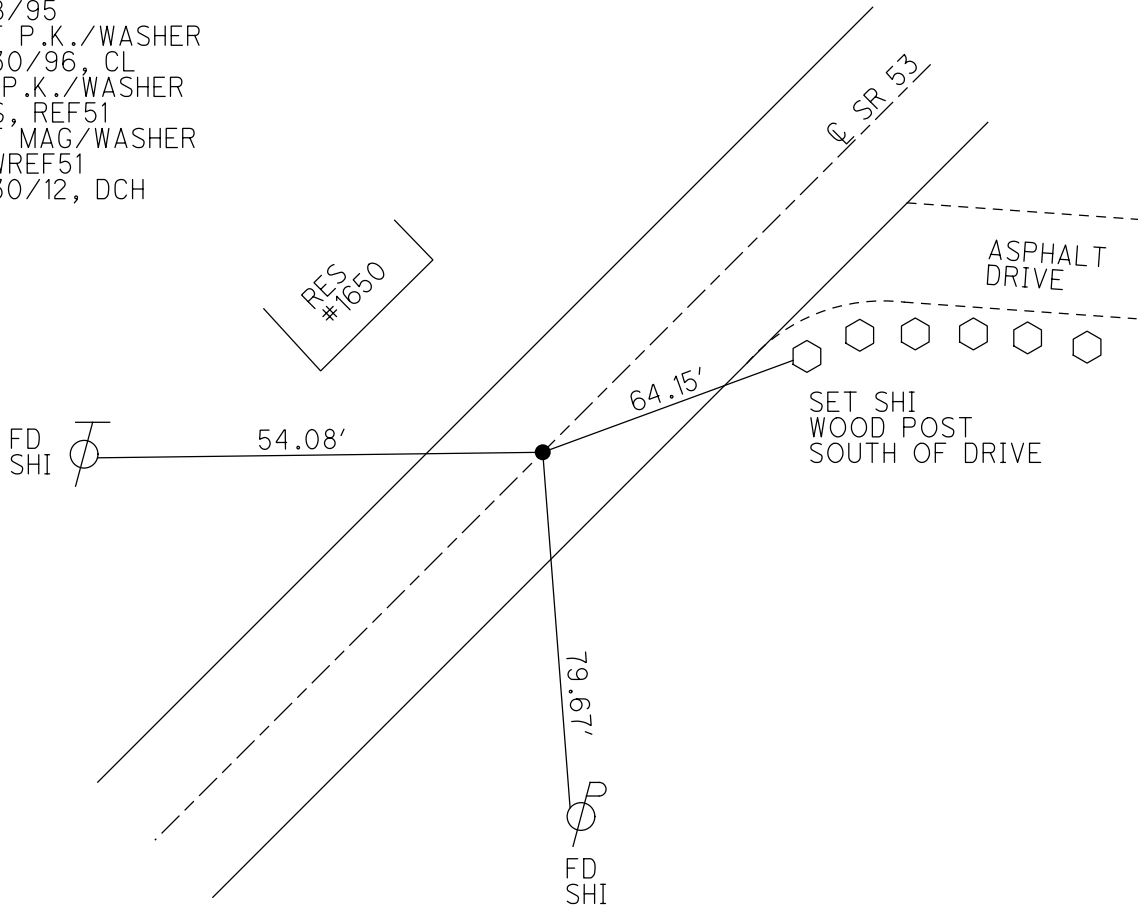
PERSONNEL	REFERENCE NO.	51	SHEET	12	OF	36
NOTES	HOMAN	DATE	8/25/11	ROUTE	SR 53	
H.C.	HOMAN	WEATHER	SUNNY	COUNTY	OTTAWA	
R.C.	HARBAUGH	TEMP.	80°	TOWNSHIP	CATAWBA ISL	
				SECTION	4-28	

TYPE MONUMENT SM.P.K.NAIL
 ON SURFACE - ~~BELOW~~ ON
 LEFT - C PAV'T - RIGHT ON
11.4' TORT EDGE PAVEMENT
 S.L.M. 779+49.2
 GRID: NORTHING: 685556.369 EASTING: 1874175.249

NOTE:
THIS MAP IS FOR ODOT PURPOSES ONLY
TO INDEX REFERENCE TIES, AND DOES NOT
REPRESENT TRUE LAND SUBDIVISION.



RECORD: T.S.
 STA. 706+12.47
 FD R.R.SPIKE, 1971
 FD SM.P.K.NAIL
 6/8/95
 SET P.K./WASHER
 5/30/96, CL
 FD P.K./WASHER
 GPS, REF51
 SET MAG/WASHER
 NEWREF51
 7/30/12, DCH



O.D.O.T. DISTRICT 2 SURVEY OFFICE

PERSONNEL

REFERENCE NO. 51

SHEET 9 OF 30

NOTES Loehrke

H.C. Rouses

R.C. Cartersbury

DATE 6-8-95

WEATHER cloudy

TEMP. +60

ROUTE SR 53

COUNTY OTTAWA

TOWNSHIP Catawba

SECTION _____

T _____ R _____

Set P.K. / WASHER

TYPE MONUMENT Sm. P.K.

5-20-96

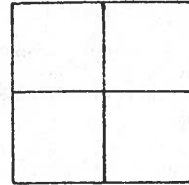
ON SURFACE - BELOW OX

C.L.

~~LEFT- & PAV'T. - RIGHT~~ ON &

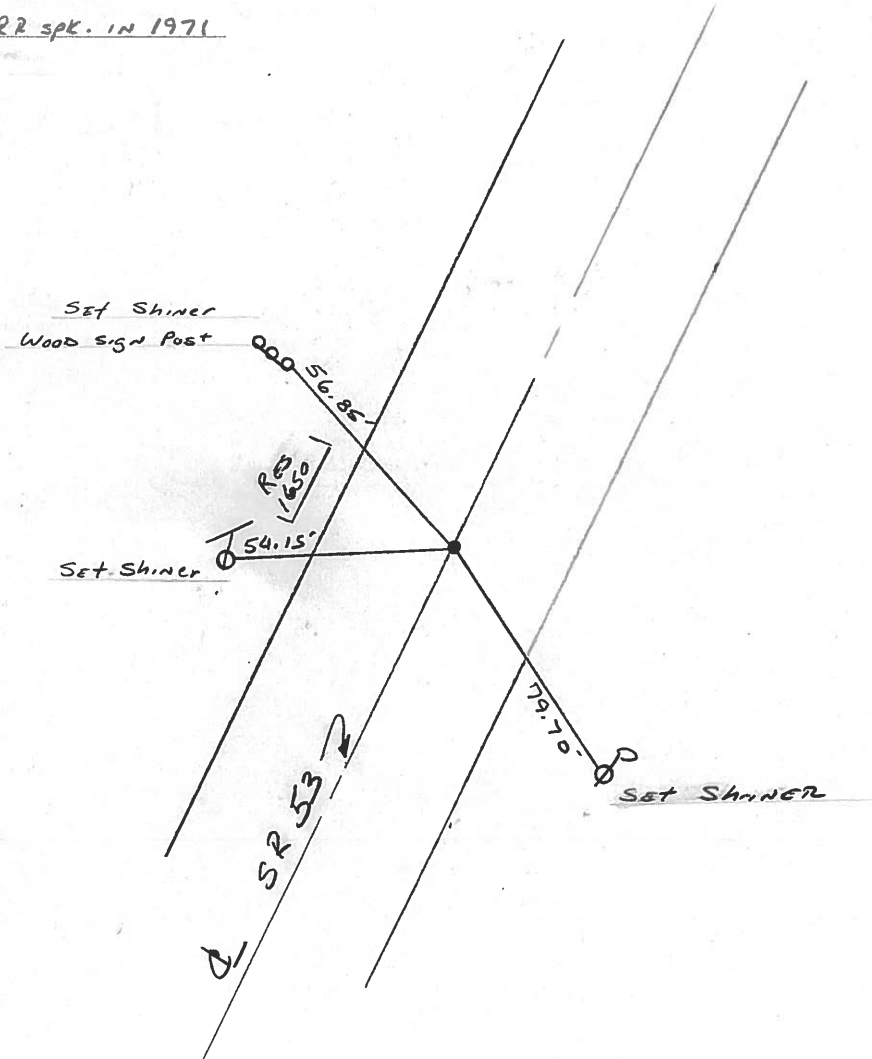
11.4 TO R + EDGE PAVEMENT

S.L.M. 779+38



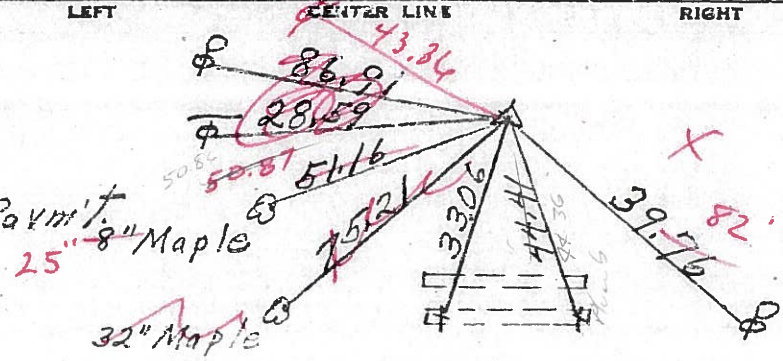
T.S. 706+12.47

RECORD: 22 SPK. IN 1971



PERSONNEL	TITLE	PERSONNEL	TITLE	COUNTY	DATE
Schneider				Ottawa	5-18-71
Mosser				S. R. 53	WEATHER Fair
Barbour				SEC.	TEMP. 75°
Geyman				DESCRIPTION S.R. #16.3 North	JOB NO.

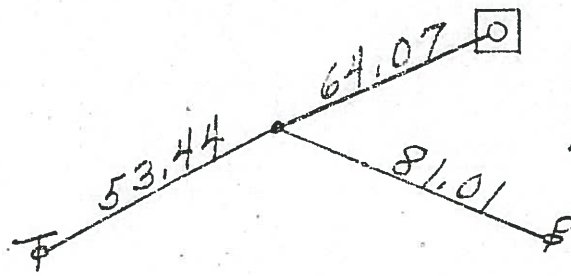
P.I. R/W
708+66.03
R.R. spk.
on Lt. edge Pavmt



3/12/84
12°
708+66.03
71+70
780+36.03
Sunny

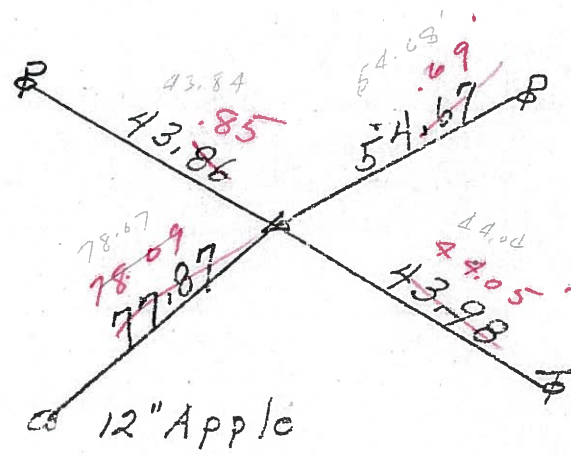
"X" on conc-tile

T.S. 706+12.47
R.R. spk.



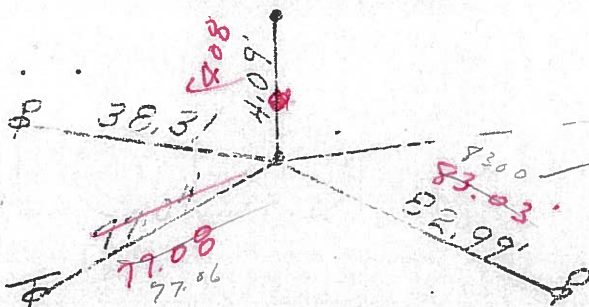
Parcel Post
Mobile Home sign
1.6' up from conc base

P.I. R/W
692+76.53
R.R. spk.



692+76.53
71+70
764+46.53

Pipe
Bolt with Nut



665+66
71+70
737+36
Twp. 20 East.

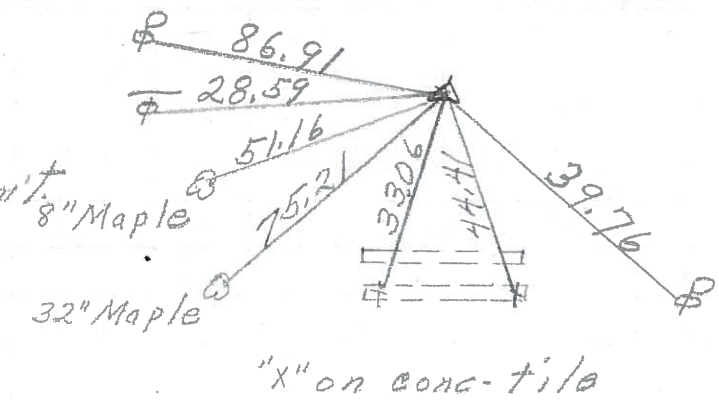
665+66
Small R.R. spk.
S.R. R/W

49

PERSONNEL	TITLE	PERSONNEL	TITLE	COUNTY	DATE
<u>Schneider</u>				<u>Ottawa</u>	<u>5-18-71</u>
<u>Mosser</u>				S. R. <u>53</u>	WEATHER <u>Fair</u>
<u>Barbour</u>				SEC. _____	TEMP. <u>75°</u>
<u>Geyman</u>				DESCRIPTION <u>S.R. #163 North</u>	JOB NO. _____

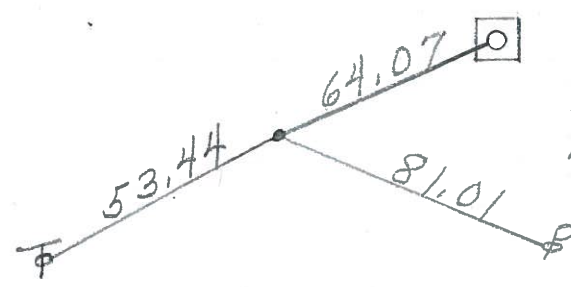
P.I.
708+66.03
R.R. spk.
on Lt. edge Pavmt.

(52)



T.S. 706+12.47
R.R. spk.

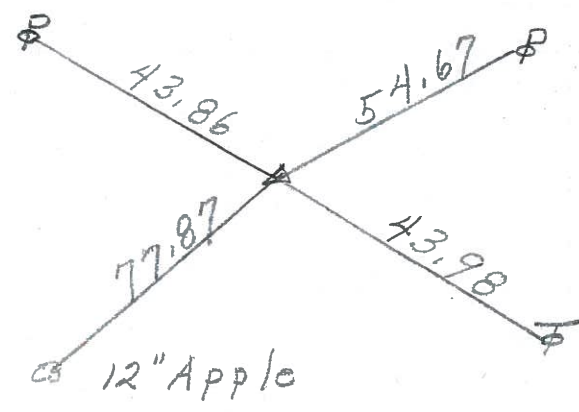
(51)



Parcel Post
Mobile Home sign
1.6' up from conc base

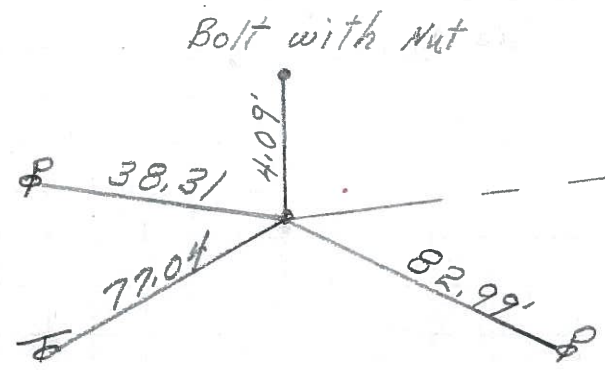
P.I.
692+76.53
R.R. spk.

(50)



665+66
Small R.R. spk.

(49)



Bolt with Nut

Twp. Rd. #143
East