

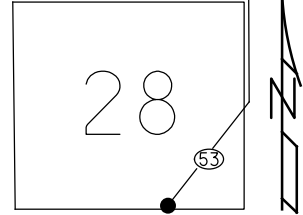
O.D.O.T. DISTRICT 2 SURVEY OFFICE (USE ONLY)

PERSONNEL _____ REFERENCE NO. 52 SHEET 10 OF 34
 NOTES RHOADES DATE 8/24/22 ROUTE SR 53
 H.C. NIESE WEATHER SUNNY COUNTY OTTAWA
 R.C. AUBLE TEMP. 78° TOWNSHIP CATAWBA
 DWG BY RHOADES PID 102905 SECTION 4-28

CONNECTICUT WESTERN RESERVE

TYPE MONUMENT MAG/WASHER
 ON SURFACE - ~~BELOW~~ ON
 OFFSET CL PAVEMENT 12.4' LT : ~~RT~~
1' LT TO LT EDGE PAVEMENT
 STATION: 781+80.3

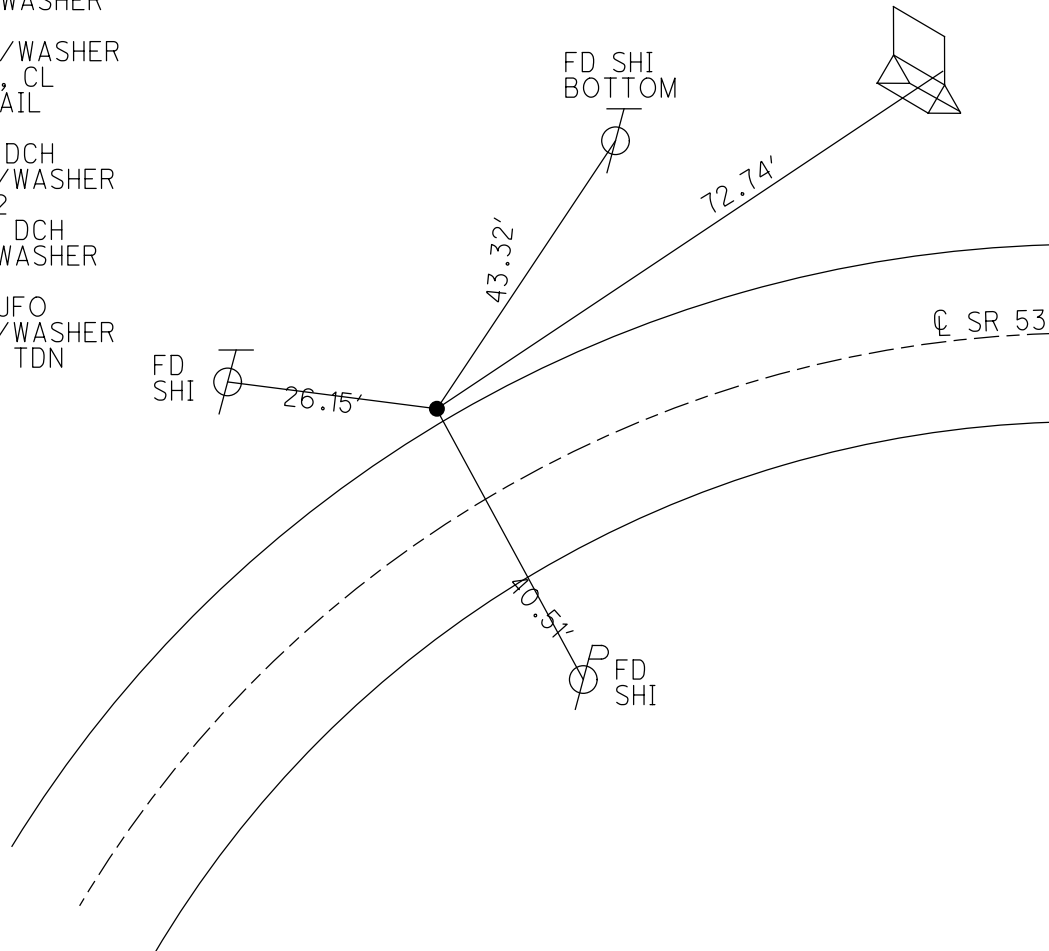
NOTE:
 THIS MAP IS FOR ODOT PURPOSES ONLY
 TO INDEX REFERENCE TIES, AND DOES NOT
 REPRESENT TRUE LAND SUBDIVISION.



HORZ. DATUM: NAD83 2011 GEOID: NAVD88 2018
 GRID: NORTHING: 685776.250 EASTING: 1874301.719

RECORD: P.I.
 STA. 708+66.03
 FD R.R.SPIKE, 1984
 FD P.K./WASHER
 6/12/95
 SET P.K./WASHER
 5/30/96, CL
 FD P.K.NAIL
 REF52
 8/25/11, DCH
 SET MAG/WASHER
 NEWREF52
 7/30/12, DCH
 FD MAG/WASHER
 REF52
 3/3/21, JFO
 SET MAG/WASHER
 5/15/23, TDN

SET TACK
 SIGN POST
 "AMER. MODULAR
 HOMES"

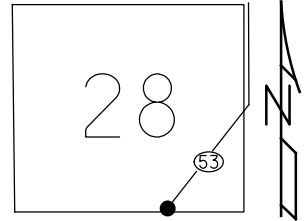


O.D.O.T. DISTRICT 2 SURVEY OFFICE (USE ONLY)

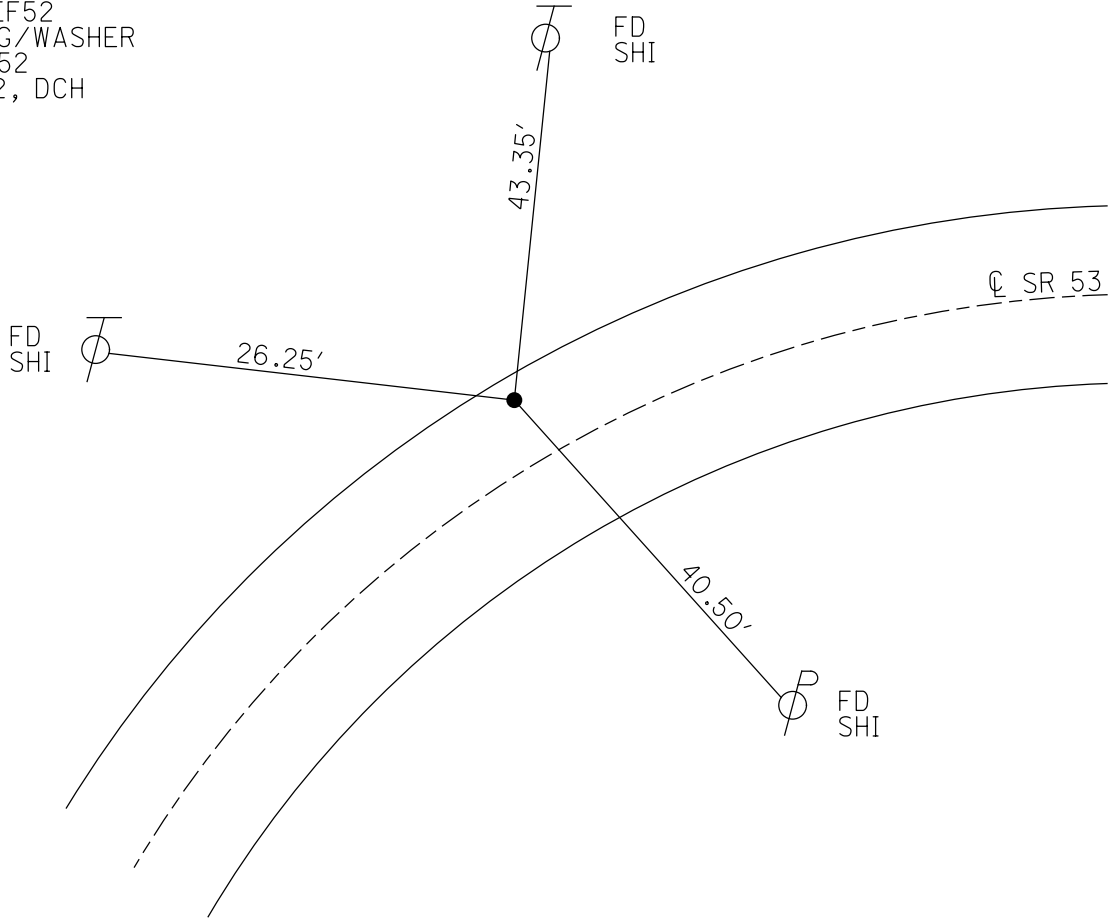
PERSONNEL	REFERENCE NO.	52	SHEET	13	OF	36
NOTES	HOMAN	DATE	8/25/11	ROUTE	SR 53	
H.C.	HOMAN	WEATHER	CLOUDY	COUNTY	OTTAWA	
R.C.	HARBAUGH	TEMP.	80°	TOWNSHIP	CATAWBA ISL	
				SECTION	4-28	

TYPE MONUMENT P.K.NAIL
 ON SURFACE - ~~BELOW~~ ON
 LEFT - CL PAV'T - ~~RIGHT~~ 12.4'
0' TO LT EDGE PAVEMENT
 S.L.M. 782+01.8
 GRID: NORTHING: 685776.310 EASTING: 1874301.726

NOTE:
THIS MAP IS FOR ODOT PURPOSES ONLY.
TO INDEX REFERENCE TIES, AND DOES NOT
REPRESENT TRUE LAND SUBDIVISION.



RECORD: P.I.
 STA. 708+66.03
 FD R.R.SPIKE, 1984
 FD P.K./WASHER
 6/12/95
 SET P.K./WASHER
 5/30/96, CL
 FD P.K.NAIL
 GPS, REF52
 SET MAG/WASHER
 NEWREF52
 7/30/12, DCH



O.D.O.T. DISTRICT 2 SURVEY OFFICE

PERSONNEL _____

REFERENCE NO. 52

SHEET 10 OF 30

NOTES LOEHRKE

H.C. CANTERBURY

R.C. ROUSOS

DATE 6-12-95

WEATHER FAIR

TEMP. +62

ROUTE S.R. 53

COUNTY OTTAWA

TOWNSHIP CATAWBA

SECTION _____

T _____ R _____

Reset 5-30-96

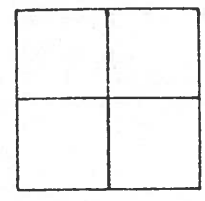
TYPE MONUMENT P.K. WASHER

ON SURFACE - BELOW Yes

LEFT- & PAV'T. - RIGHT 12.4' Lt &

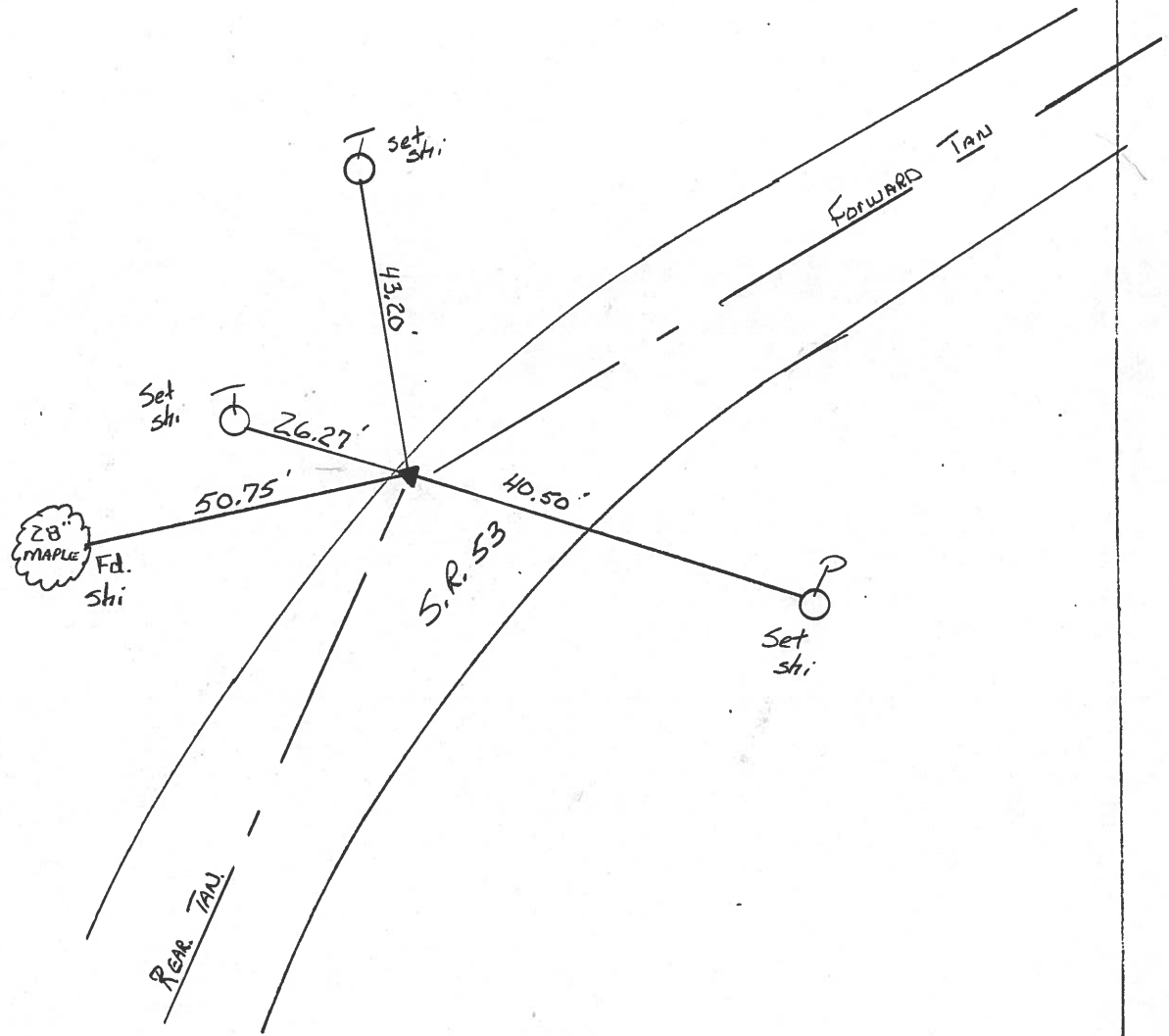
ON TO Lt EDGE PAVEMENT

S.L.M. 781 +92



Ref #52

Record: P.I. R/W
Sta 708+66.03
RR Spike in 1984



ODOT. DISTRICT 2 SURVEY OFFICE

SHEET _____ OF _____

County Ottawa S.R. #53

Date 8/28/84

Township Catawba

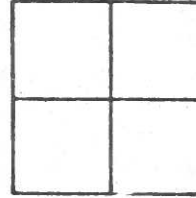
Weather sunny

Section _____

Temp. 70°

T N, R E

Personnel Cronin



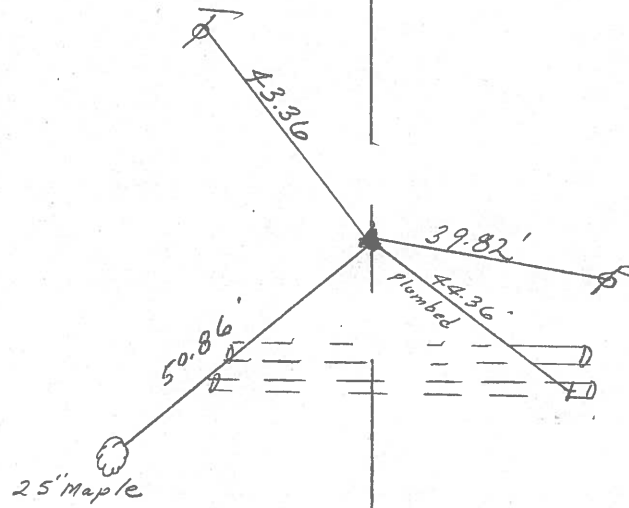
Ripple

Geyman

Barbour

PT 52

P.I. R/W
708+66.03
set P.K. washer atop
R.R. spike - Lt. E.P.



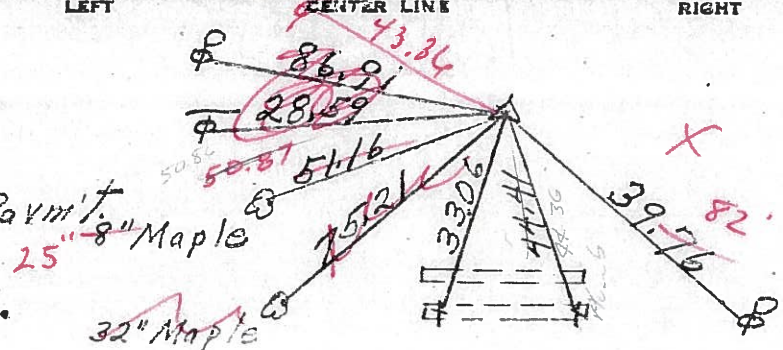
R/W S.R. #53



PERSONNEL	TITLE	PERSONNEL	TITLE	COUNTY	DATE
Schneider				Ottawa	5-18-71
Mosser				S. R. 53	WEATHER Fair
Barbour				SEC.	TEMP. 75°
Geyman					

DESCRIPTION S.R. #16.3 North LEFT CENTER LINE RIGHT JOB NO.

P.I. R/W
708 + 66.03
R.R. Spk.
on Lt. edge Parmit.

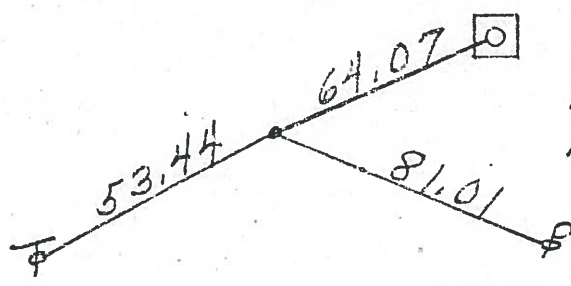


3/12/84
12°
708 + 66.03
71 + 70
780 + 36.03
Sunny

52

"X" on conc. tile

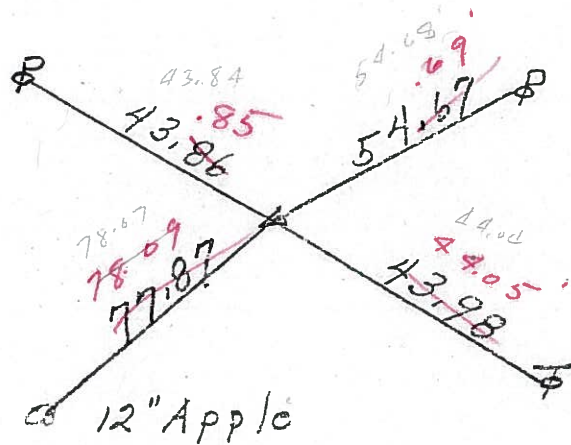
T.S. 706 + 12.47
R.R. Spk.



Parcel Post
Mobile Home sign
1.6' up from conc. base

51

P.I. R/W
692 + 76.53
R.R. Spk.

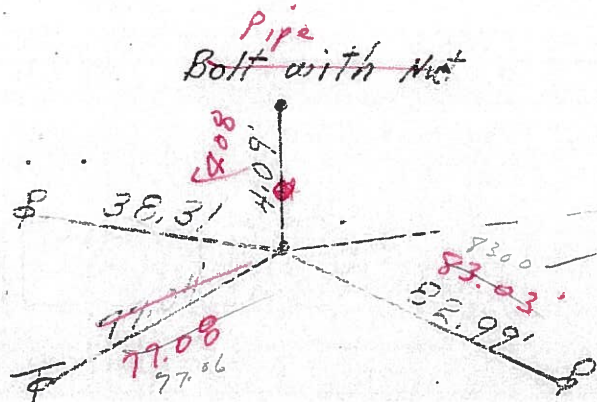


692 + 76.53
71 + 70
764 + 46.53

50

12" Apple

665 + 66
MINE Small R.R. Spk.
S.R. R/W



665 + 66
71 + 70
737 + 36
Temp. 83° East.

49

PERSONNEL TITLE PERSONNEL TITLE

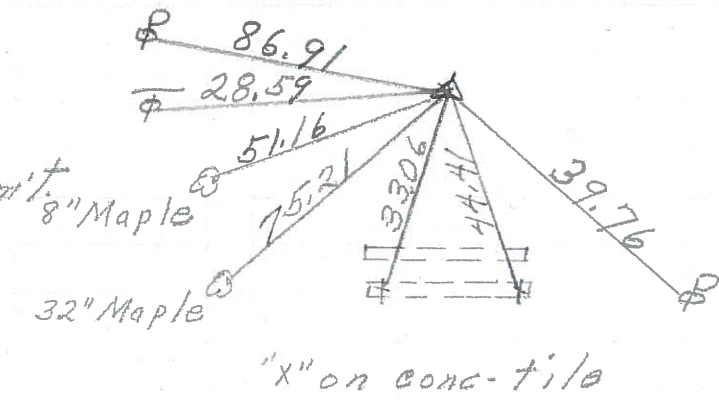
Schneider
Mosser
Barbour
Geyman

COUNTY Ottawa DATE 5-18-71
 S. R. 53 WEATHER Fair
 SEC. _____ TEMP. 75°

DESCRIPTION S.R. #163 North JOB NO. _____

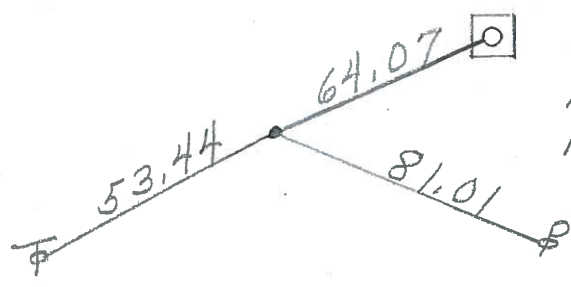
P.I.
 708+66.03
 R.R. spk.
 on Lt. edge Parmit's

52



T.S. 706+12.47
 R.R. spk.

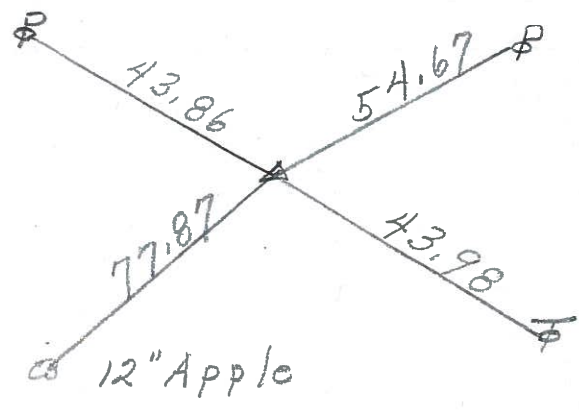
51



Parcel Post
 Mobile Home sign
 1.6' up from conc-base

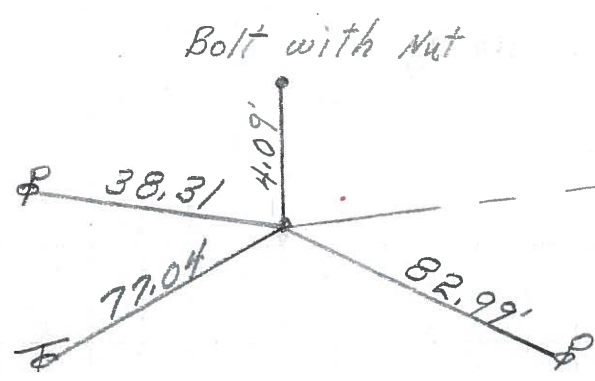
P.I.
 692+76.53
 R.R. spk.

50



665+66
 Small R.R. spk.

49



Twp. Rd. #143
 East

PERSONNEL	TITLE	PERSONNEL	TITLE	COUNTY	<u>Ottawa</u>	DATE	<u>8-2-68</u>
<u>Schneider</u>		<u>Potts</u>		S. R.	<u>53</u>	WEATHER	<u>Fair</u>
<u>Mosser</u>				SEC.	<u>S.R. #163 North</u>	TEMP.	<u>75'</u>
<u>Barbour</u>				DESCRIPTION	<u>Ties for Control Points</u>		JOB NO.
<u>Redding</u>							



PERSONNEL	TITLE	PERSONNEL	TITLE
SWORDEN			
HOLCOMBE			
SAGE			
AULT			

COUNTY OTTAWA

DATE JAN. 1, 1958

S. R. #53

WEATHER Cloudy

SEC. _____

TEMP. +30

DESCRIPTION PE TIES

JOB NO. _____

